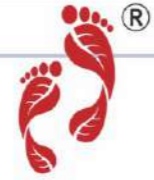


Project by



॥ श्रीपद ॥
GROUP



WHERE TECHNOLOGY
MEETS LUXURY



Commitment and persistence pave way for excellence. The journey of all the projects we have completed under the banner of **Shreepad Group** so far, once again proves this ages-old dictum true. With each of our new endeavor, we have reinforced our commitment to provide the finest to our customers, and struck the right cords to help people develop a harmonious life.

It all began with **Shreepad Residency**, with which we simply touched the hearts. Then came **Shreepad Ethics**, which actually reflected our deep commitment towards ethical ways of conducting business. We took a step further with **Shreepad Antillia** and provided truly notch-above homes. As we always believe in combining luxury with deep spiritual gratification, we echoed the same with **Shreepad Anantta**. Taking next step, we expanded our expertise with **Shreepad Panorama**. It indicated our broad vision of delivering much more beyond the promises. Then we ventured into blossoming lives with **Shreepad Seasons**, helping its dwellers find charming colours, the nature has bestowed upon us all. Subsequently, we developed **Shreepad Celebrations** to celebrate our warm relations with scores of families and by amalgamating all these into one project we spring up with **Shreepad Park Arena**. A project really close to our hearts, as it is going to reflect our pleasant journey so far.

And now, we are looking forward to fabricate brand new project Shreepad Infinia & Shreepad World. **Shreepad Infinia** is the first smart home project where technology meets luxury. Shreepad is the esteem name in residential project & now we step into commercial project. **Shreepad World** is a project blend of showrooms & corporate offices with unique design and attached balcony to offices, both projects will be a benchmark in the vicinity.

OUR COMPLETED PROJECTS



OUR ON GOING PROJECTS



PRIME & PREFERRED LOCATION FOR YOUR RESIDENCE

- Located at 100' ft. wide Pal main road.
- Only 300 meter from pal-umara bridge, Pal RTO & Hazira main road.
- All the apartments have good view.



Pal -RTO

Adajan- Hazira Rd

Pal-Umra Bridge

WORLD

॥ श्रीपद ॥
Infinia



SMART HOME SPECIFICATIONS



Touch switches at the entry point of all rooms.



Turning on/off lights, fan, TV, A.C. of the flat via Alexa, Google and also from your mobile phone.



With simple voice command access your entire smart home. Excluding common flat amenities



You can operate your smart home from any place of the corner at any time.

NEXT GENERATION SMART HOMES FOR THE FIRST TIME IN GUJARAT

Shreepad Infinia, a new development in heart of the city, will be the first project offering luxury with integrated home automation technology. Home automation is slowly but steadily becoming a part of daily lives around the world. When we talk about smart home, We refer to a house that embraces "intelligent" technology that simplifies and automates day-to-day activities. Our goal is to provide Smart technology which brings smart solutions and make lives of people more safe, secure and comfortable.



Our Beauty begins from the aesthetic entrance & designer Brick walls. Simply put our architecture is beautiful. And yes despite our imposing structures, the sky view is limitless.

THE GATEWAY TO A WHOLE NEW WORLD



“ LIFE IS ONE CLICK AWAY
FROM BEING BETTER ”
Quality & Design as an iconic masterpiece



“

A SLICE OF NATURE FOR ALL

”

Children can play their activities with nature & Peace





॥ श्रीषुद्ध ॥

Infinia

A lifestyle that you deserve. Infinia gave us a huge canvas to integrate a variety of natural elements - green spaces and water scapes. You'll find a vibrant mix of carefully-crafted greenery.

THE HEAVEN OF ALL CONTENTMENT
& PLEASURE



GROUND FLOOR PLAN



- | | | | | | |
|----------------------------------|------------------------|------------------|------------------|-----------------------------|-----------------------|
| 1 Grand Entrance with Water Body | 6 Deck with Seating | 11 Club Entrance | 16 Steam Bath | 21 Box Cricket | 26 Children Play Area |
| 2 Security Cabin | 7 Walking Track | 12 Washroom | 17 Changing Room | 22 Projector wall in Garden | 27 Multi Sport Court |
| 3 Pickup Zone | 8 Outdoor Seating Area | 13 Indoor Games | 18 Shower | 23 Out Door Gym | 28 Ele. Meter Room |
| 4 Formal Seating Area | 9 Entrance Foyer | 14 Indoor Gym | 19 Party Deck | 24 Landscape Entrance | |
| 5 Welcome Garden | 10 Gazebo | 15 Jacuzzi | 20 Banquet Hall | 25 Common Parking | |

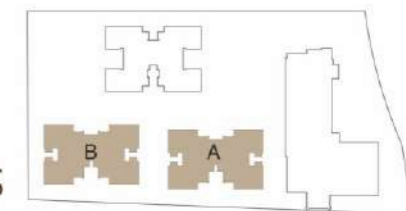


TYPICAL FLOOR PLAN



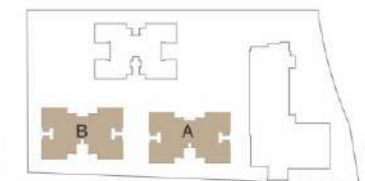


FLOOR PLAN of A & B BUILDINGS at 1st & 12th FLOORS



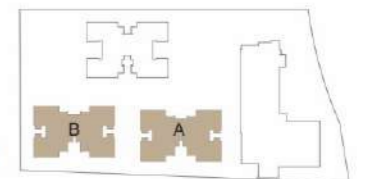


FLOOR PLAN of A & B BUILDINGS at 2nd, 4th, 6th, 8th & 10th FLOORS



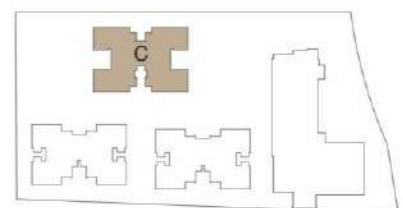


FLOOR PLAN of A & B BUILDINGS at 3rd, 5th, 7th, 9th, 11th & 13th FLOORS



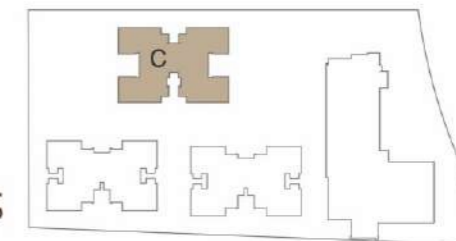


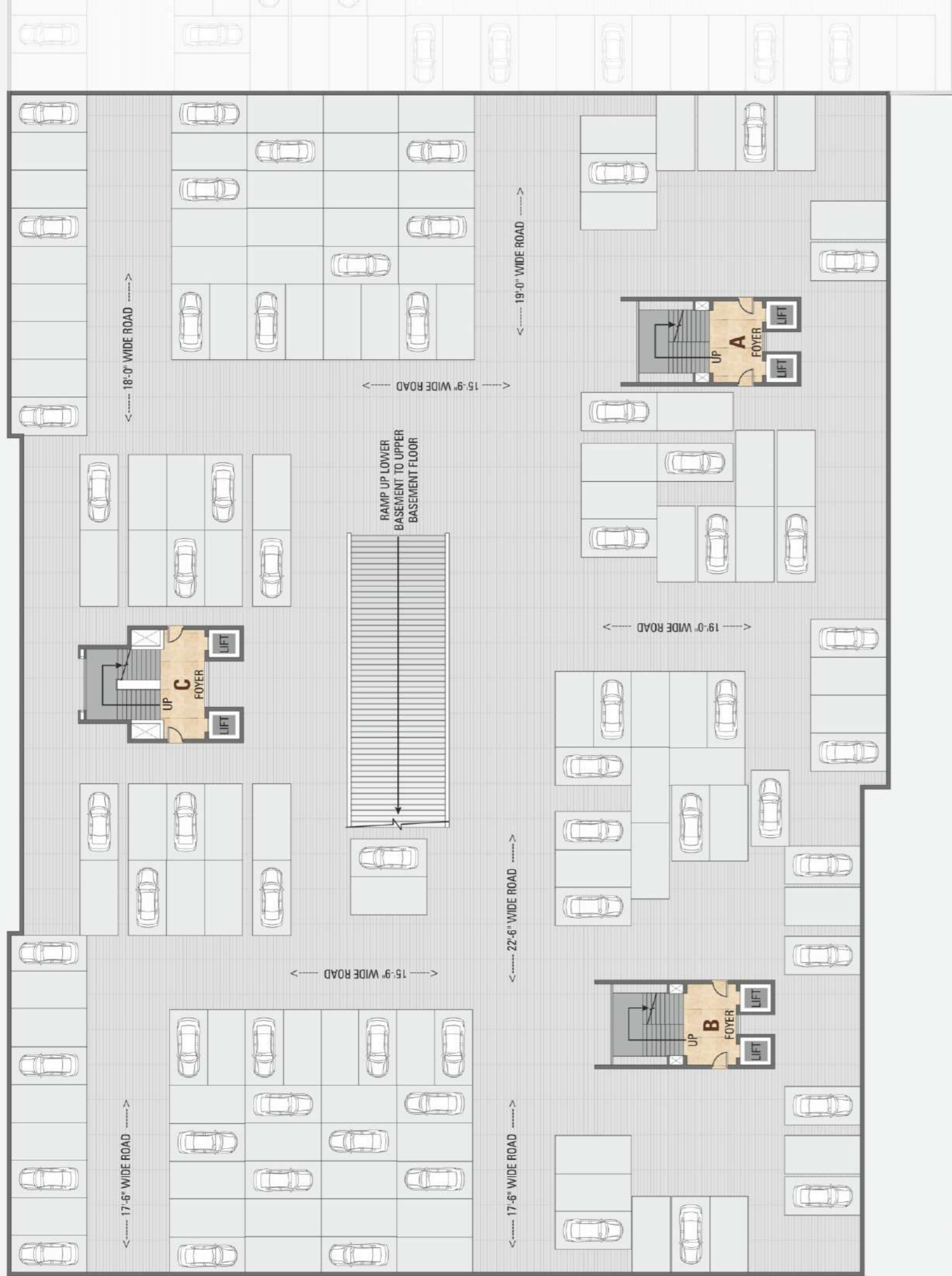
FLOOR PLAN of **C BUILDING** at 1st & 13th FLOORS



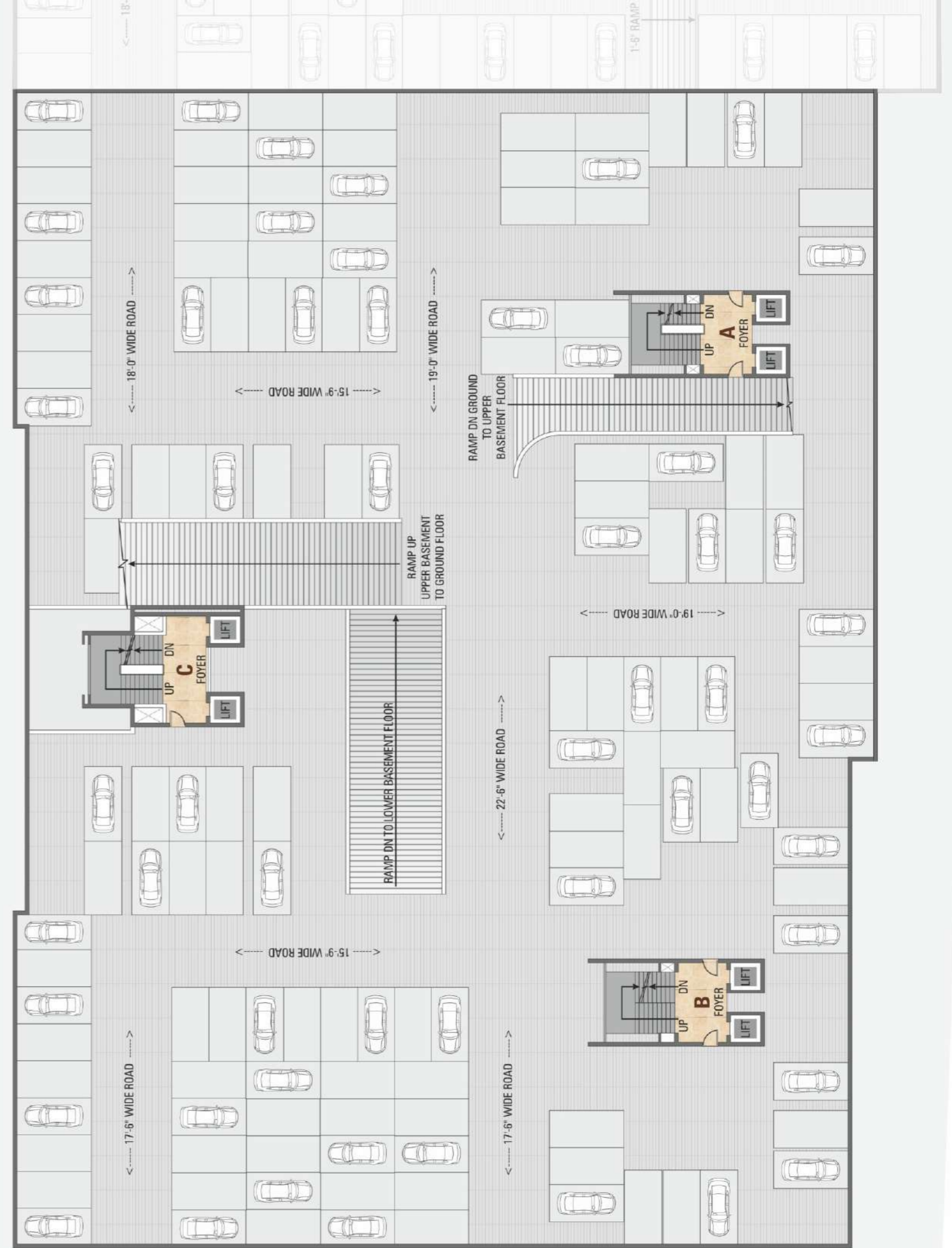


FLOOR PLAN of C BUILDING at 2nd to 12th FLOORS

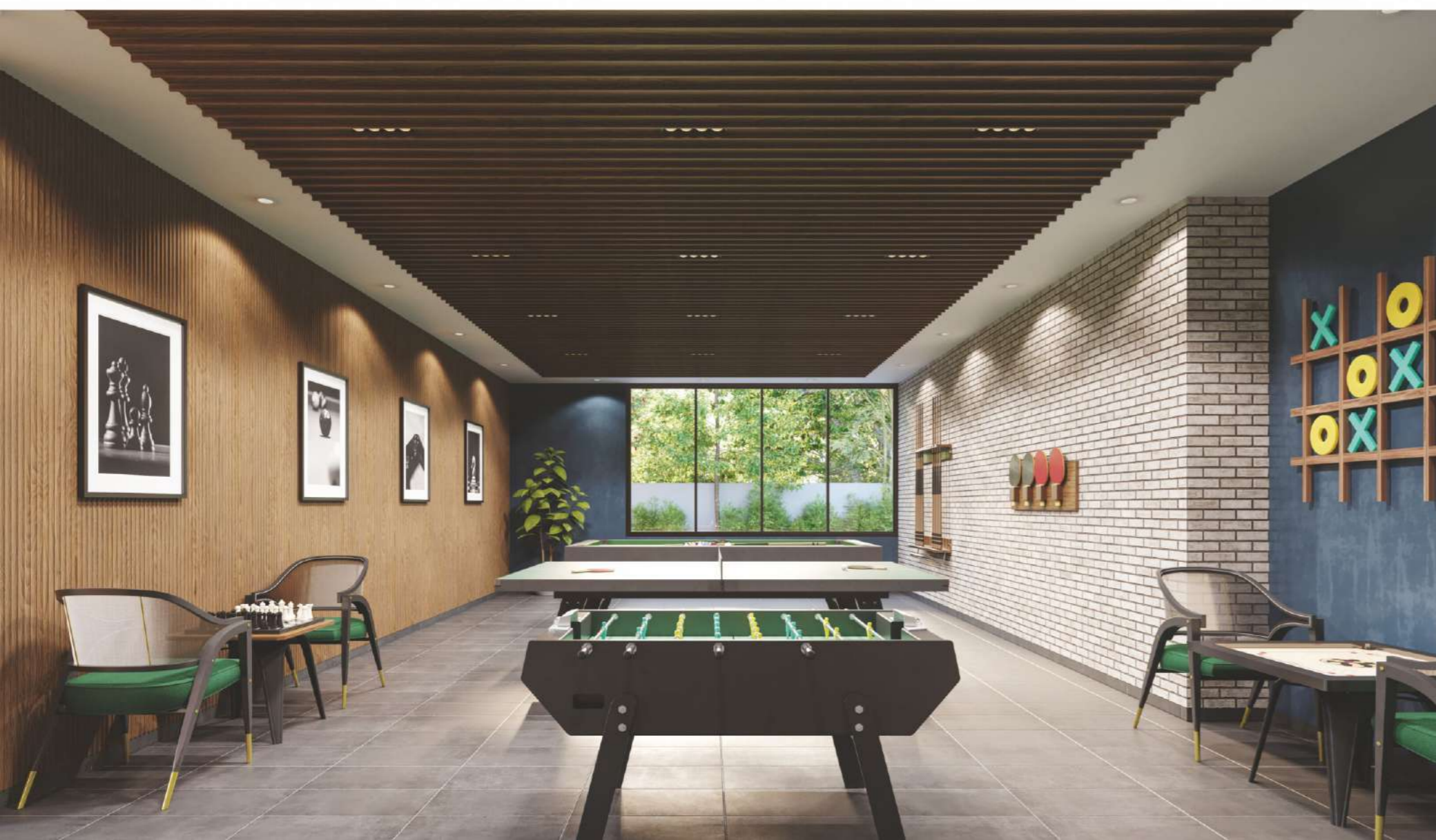
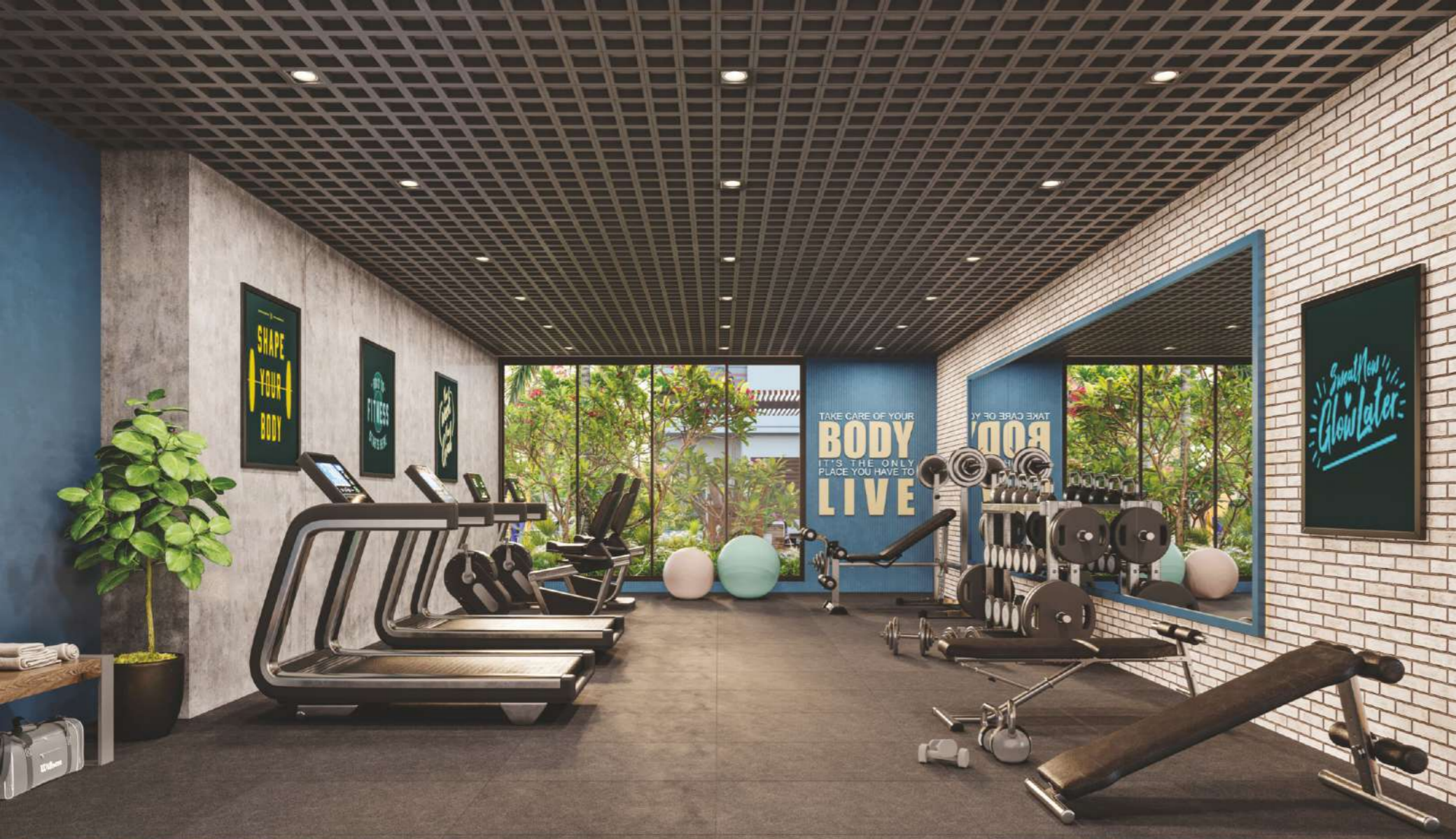




N  LOWER BASEMENT PARKING



N  UPPER BASEMENT PARKING



“ BALANCE OF LIFE ”
A fit mind comes to a fit body





LANDSCAPE AMENITIES



Waterbody



Security Cabin



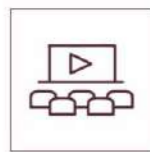
Senior Citizen Sitting



Gazebo Sitting



Outdoor Gym



Projector Wall in Garden



Box Cricket



Multi Purpose Play Area



Jogging Track



Garden



Yoga Zone



Landscaped Entrance for Each Building



 CLUB (FACILITIES)



Banquet hall



Indoor games



Gym with modern equipments



Jacuzzi



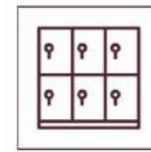
Steam bath



Wash room for guests



Changing room



Locker



Shower area





BUILDING SPECIFICATIONS

ENTRANCE FOYER

- Well designed entrance foyer and elegantly designed lobby at all the floor

FACADE TREATMENT

- Double coat sand faced plaster on external wall
- Acrylic texture on external wall
- Weather shield max / Apex ultima paint on external wall

PARKING

- 2 Car allotted parking for each flat in 1st & 2nd basement
- Ample Visitor Parking Space

TERRACE

- Double coat water proofing
- China mosaic flooring for heat reduction

ELEVATORS

- Two fully automatic passenger elevators of kone/ Schindler / equivalent for each building

WATER SUPPLY

- Adequate capacity of underground and over head water tanks for SMC & bore water and separate tanks for fire safety.

FIRE SYSTEM

- Fire fighting system provided as per SMC Fire norms

ELECTRIC & POWER BACKUP

- Silent generator of adequate capacity for lift, water pump and common facilities
- Designer light fitting for common passage and campus
- Solar power system for common and campus lighting, provided at terrace of each building.

SECURITY

- 24 x 7 Gated Security with Boom Barrier
- CCTV Camera coverage in reception, campus and basement parking area
- Video door phone and intercom facility with connectivity from entrance foyer to each flat, lift and security cabin

TECHNICAL SPECIFICATION

- Earthquake resistance structure design as per IS code
- Construction with R.O. water
- Project Follows Green Building Concept



APARTMENT SPECIFICATIONS

FLOOR FINISH

- 32" x 64" Italian marble finish tiles in living, dining, kitchen area and in all bedrooms

DECK & FLOWER BED

- Deck with designer rustic tiles floor
- Flower bed with water proofing and kota finish
- S.S / M.S. / Glass railing

KITCHEN

- Vitrified/granite/quartz kitchen platform with sink of frank/equivalent
- High quality vitrified tiles up to lintel level
- Gas Connection on platform and provision for water purification

WASH & UTILITY

- Granite/kota in flooring and vitrified tiles on dado with adequate electrical and plumbing points
- Centralized plumbing for hot water with gas connection in individual flat

STORE

- Adequate kota stone/granite shelves with glazed tiles dado

WALL SURFACE

- All plastered wall with putty finish

TOILETS

- Decorative high quality vitrified tiles up to lintel level
- Jaquar/grohe or equivalent shower panel in two master bed rooms and wall mixtures/diverter in other bed room.
- Simpolo / Jaquar or equivalent sanitary fittings

DOORS & WINDOWS

- Designer main door with wooden frame provided with premium lock & fittings
- Internal door frames in granite, without doors for interior design purpose & easy modification
- All windows opening provided with granite frame and good quality aluminium anodised sliding window with reflective glass for heat reduction
- Well designed S.S./M.S./glass safety grill or railing for each windows

ELECTRICALS

- Sufficient points with concealed copper wiring of R.R. / Polycab / Anchor or equivalent
- Modular switches of Anchor / Legrand or equivalent
- 3 Phase meter to each flat
- 2 Amp. power backup in each flat

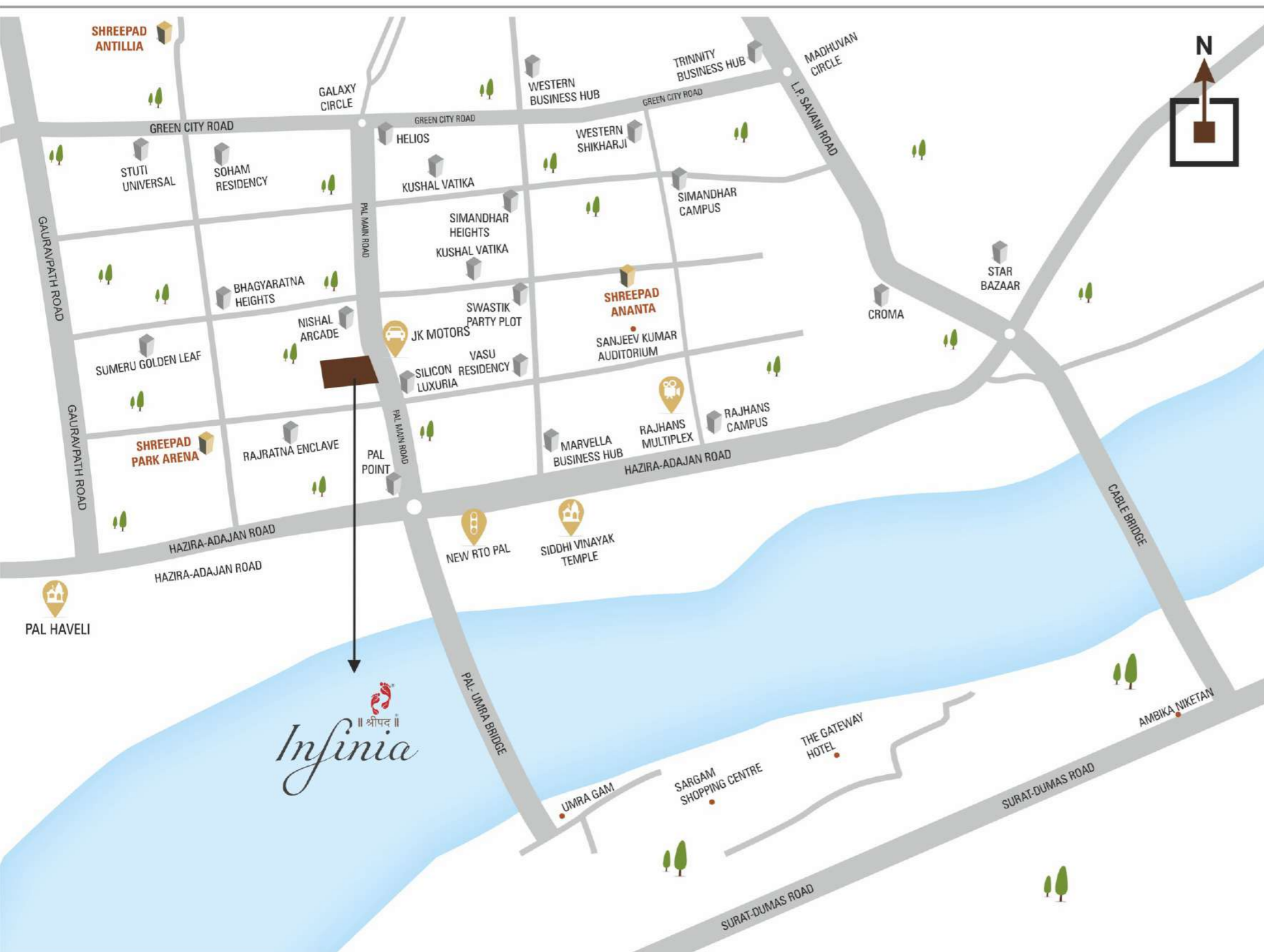
AIR CONDITIONERS

- Copper piping for living and all the bed rooms

TELEVISION, INTERNET & TELEPHONE

- Convenient provision of Internet. Telephone and Television point in each flat

KEY PLAN



DEVELOPER



ARCHITECT



STRUCTURE



VASTU CONSULTANT



ACHARYA SANJAY PORWAL
93279 69791

Site Address : **SHREEPAD INFINIA**
T.P 16, Opp. J. K. Motors, Pal Main Road,
Adajan, Pal, Surat. (Gujarat) India.- 395009

Contact Details : +91 83476 68000

www.gujrera.gujarat.gov.in

RERA No. : PR/GJ/SURAT/SURAT CITY/SUDA/MAA07993/030221

DISCLAIMER

- In the interest of continual developments in design & quality of constructions, the developer reserves all rights to make any changes in the scheme including technical specification, designs, planning, layout & all purchasers shall abide by such changes.
- Changes / alteration of any nature including elevation, exterior colour scheme, balcony grill or any other changes affecting the overall design concept and outlook of the scheme are strictly not permitted during and after the completion of the scheme.
- Any RCC (beam, column & slab) must not be damaged during your interior works.
- All external laying and drawing of low-voltage cables such as telephone, TV, internet cables shall be strictly laid as per consultants service drawings with prior consent of developer / builder office. No wire/ cables / conduits shall be laid or installed such that they form hanging formation on the building exterior faces.
- Irregular payments may cause cancellation of booking.

- In case of cancellation of unit 10% of payment will be deducted as management service charges and the balance will be returned only after release of the unit.
- Full & final payment with all legal and extra charges must be paid before registered sale deed / possession.
- Unit can be resale only after completion of 100% payment
- Any changes in rules and regulation & by laws (during or after completion of construction work) of government , Semi government , SMC, authorities, implementation or RERA, is bound to all purchaser / member / allottee.
- This brochure is intended only for easy display & information of the scheme and does not form part of the legal documents.
- Subject to Surat jurisdiction.