

AN EPITOME OF OPULENCE

2 & 3 BHK LUXURY APARTMENT COMMUNITY
BACHUPALLY, HYDERABAD



WELCOME TO
LIVING EXPERIENCE
THAT IS A CLASS APART



A Living Experience That Mesmerises You

This striking residential landmark will mesmerise you as much for its stunning design as for its unparalleled level of amenities and services



Presenting

TWINZ

TOWERING ABOVE
ITS PRESTIGIOUS
NEIGHBOURHOOD

A marvel that offers an unsurpassed level of luxury in apartment living. Meticulous attention to detail and intelligent use of space combine to create beautiful, livable spaces with utility factor, makes it one of a kind.

A TIMELESS ELEGANCE

A truly enjoyable living on a higher plane. Imagine breathtaking views and an exclusive lifestyle that only comes with unsurpassed luxury.





A Living Experience So Seamless

We are creating something truly exciting for Hyderabad — alluring residential community that will take living experience to a new level with comfort & convenience. Embrace it!

A LIVING EXPERIENCE
THAT IS CHERISHED
FOR A LIFETIME





Being Part Of Family Means Smiles All The Way

Admire the beauty of being together
with family. The community offers
an innumerable opportunities for
your family to enjoy and stay together



The Community gives you
edge to relish the moments
where you strike a balance
between work & life

It's time to bring out the child in you

There's something in it for everyone here at Twinz.
Every age group has their own way of leading life.



A young girl with dark hair is sitting on a wooden slatted bench outdoors. She is wearing a white sleeveless dress with pink floral patterns and white sandals. A large, multi-colored umbrella (rainbow spectrum) is open behind her, providing shade. In the foreground, there is a bouquet of flowers with yellow, white, and pink blooms. The background is a blurred outdoor setting with a building and greenery.

SAFE & SECURE ABODE

Kids are innocent and lovable.
They need an environment
where there's no fear. Twinz offers
an environment that is safe & secure
so that your kids can
have a gala of time with friends

A COMMUNITY THAT
BRIDGES GAP BETWEEN
GENERATIONS



A luxurious interior scene featuring a white armchair with gold accents, a crystal chandelier, and classical columns. The text "AN UNPRECEDENTED LEVEL OF GLAMOUR" is centered in a teal serif font.

AN UNPRECEDENTED
LEVEL OF GLAMOUR

SUN-KISSED AND SPACIOUS ROOMS



A woman with dark hair tied in a bun, wearing a white long-sleeved shirt with small blue polka dots and blue jeans, is sitting on a grey fabric sofa. She is smiling and looking at a silver laptop on her lap, with her hands on the keyboard. The room is bright and airy, with white louvered shutters in the background and a green plant. The entire scene is framed by a yellow border, which is itself set against a dark teal background with large green leaf patterns.

A HOME THAT IS CONDUCTIVE FOR
LIVE, WORK, PLAY...

DISCOVER THE JOY
LINED WITH BEST OF AMENITIES





CLUB HOUSE AMENITIES

OFFICIAL

- + Reception & Waiting Lounge
- + Administration Office
- + Office Desks for working from home
- + Guest Lounge
- + Conferencing Facility

CONVENIENCES

- + Saloon
- + Creche
- + Kitchen
- + Library

FITNESS

- + Gymnasium
- + Walking/Jogging Track
- + Cycling Track

HEALTH INDOOR

- + Yoga / Aerobic deck
- + Spa
- + Steam / Sauna
- + Gymnasium

INDOOR FACILITIES

- + Indoor Badminton Courts
- + Snooker Table
- + Table Tennis
- + Carom / Chess Boards

ROOF-TOP FACILITIES

- + Roof-top Private Party Area
- + Roof-top Private Cinema Zone
- + Roof-top Green Dining Area

CELEBRATE AN OCCASION CALLED LIFE
AT MULTI-PURPOSE HALL





SPA



CRECHE



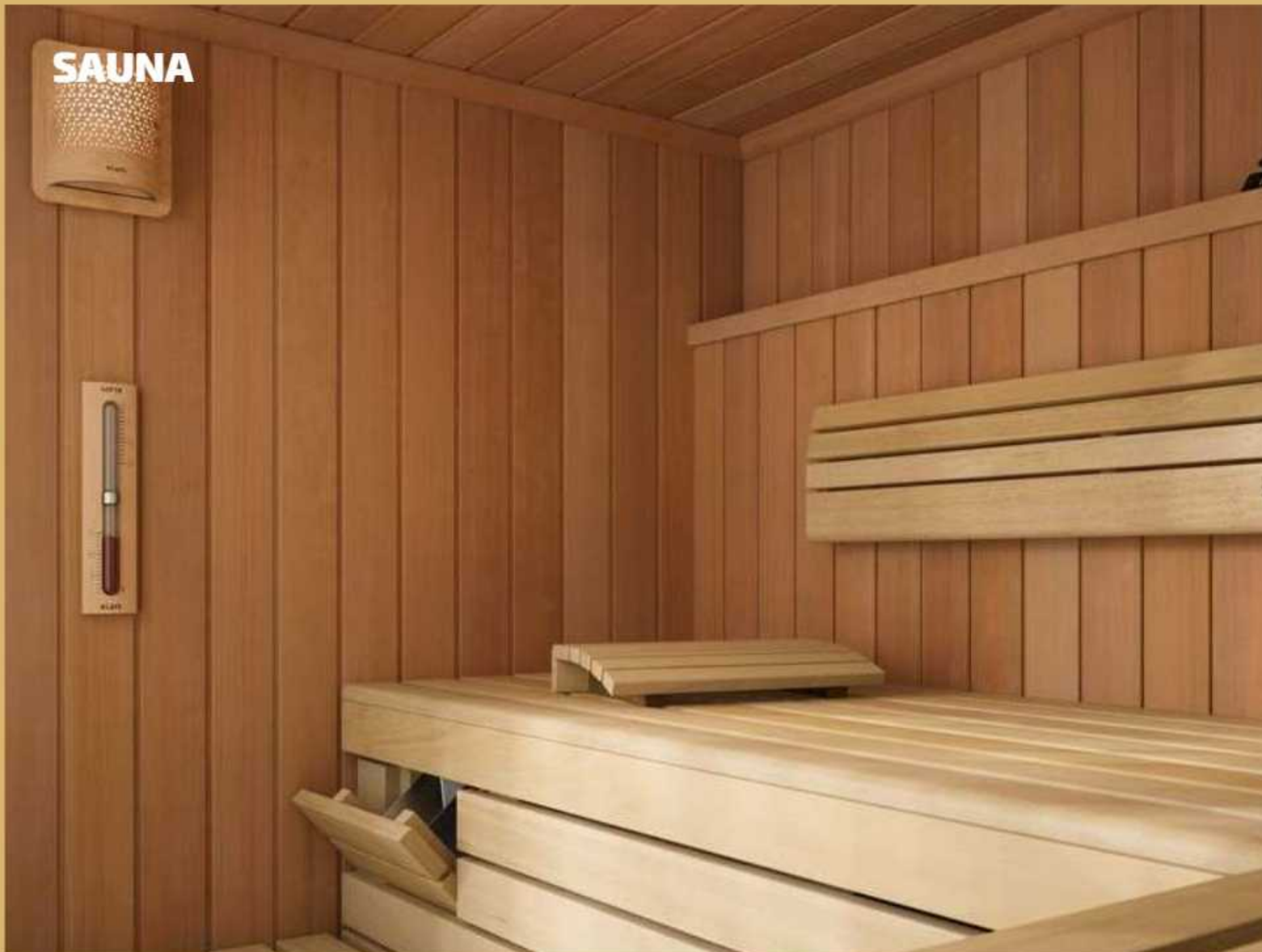
MINI THEATRE



CONFERENCE



SAUNA



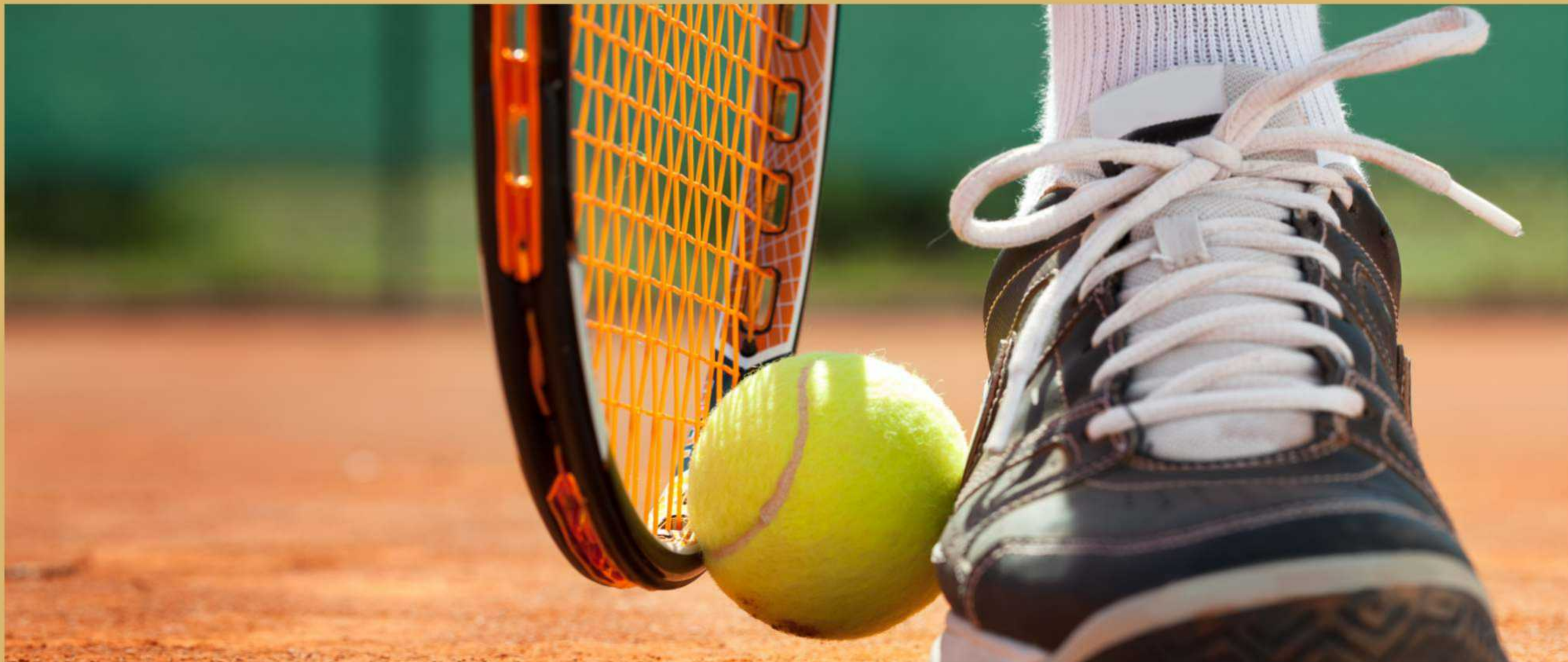
SALOON





KIDS PARADISE

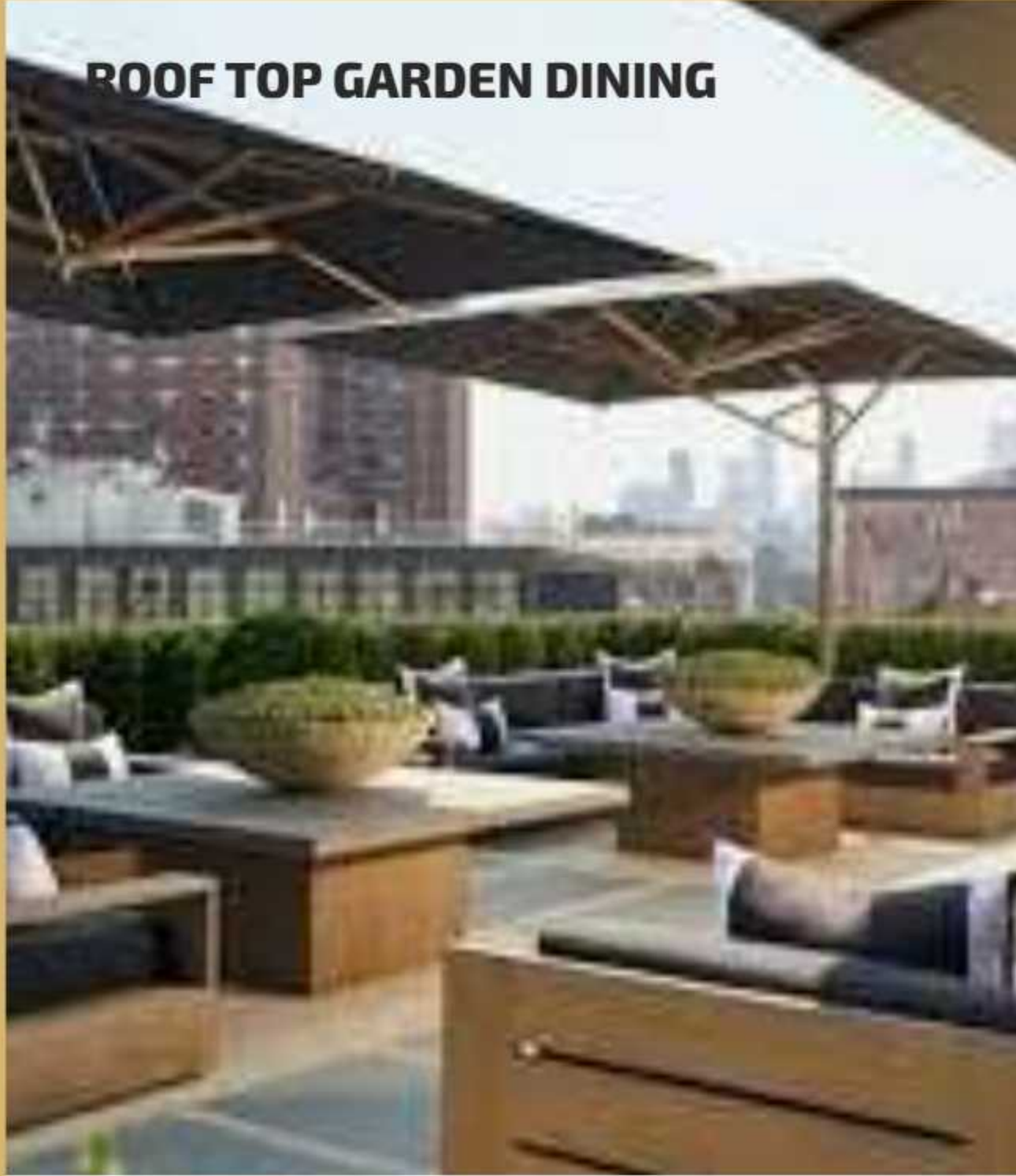




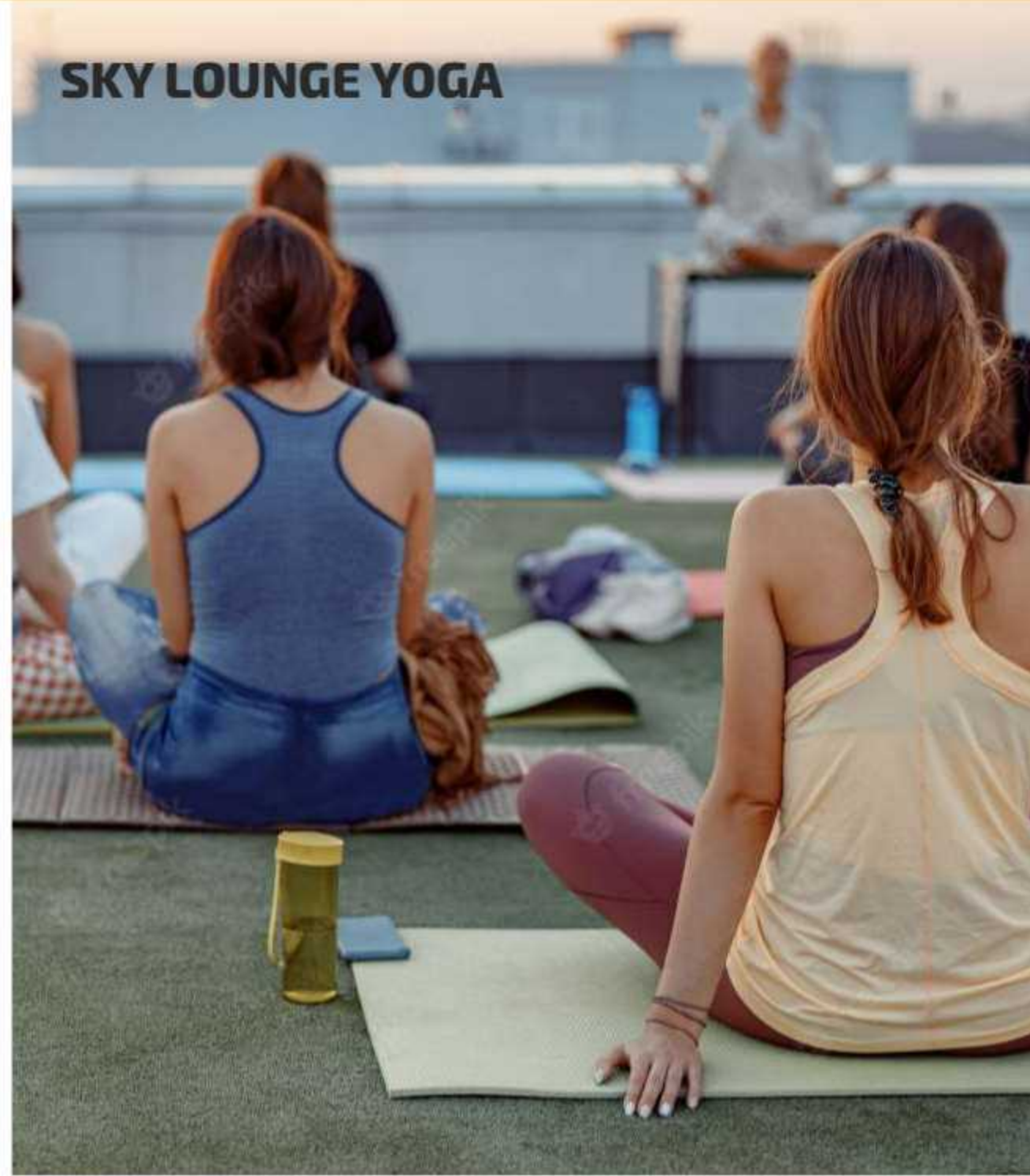
OUTDOOR AMENITIES

- > Grand Entrance Plaza
- > Sky lounge yoga room
- > Sky Lounge Kitty party Area
- > EV Charging Provision
- > Hammock Zone
- > Coworking space on Roof-top
- > Roof-top Private Party Area
- > Roof-top Private Cinema Zone
- > Roof-Green Dining Area
- > 24/7 Security
- > Majestic Club House
- > Swimming Pool with Deck
- > Walking/Jogging/Cycling Track
- > Outdoor Gym
- > Cricket Practice Nets
- > Pergolas with seating
- > Children Play Area
- > Itercom Kids Adventure Zone
- > Outdoor Meditation & Yoga centre
- > Multi-purpose Court
- > Alluring Landscapes
- > STP Plant
- > Rain Water Harvesting
- > Water Softening Plant
- > Solar Fencing
- > CCTV Surveillance

ROOF TOP GARDEN DINING



SKY LOUNGE YOGA



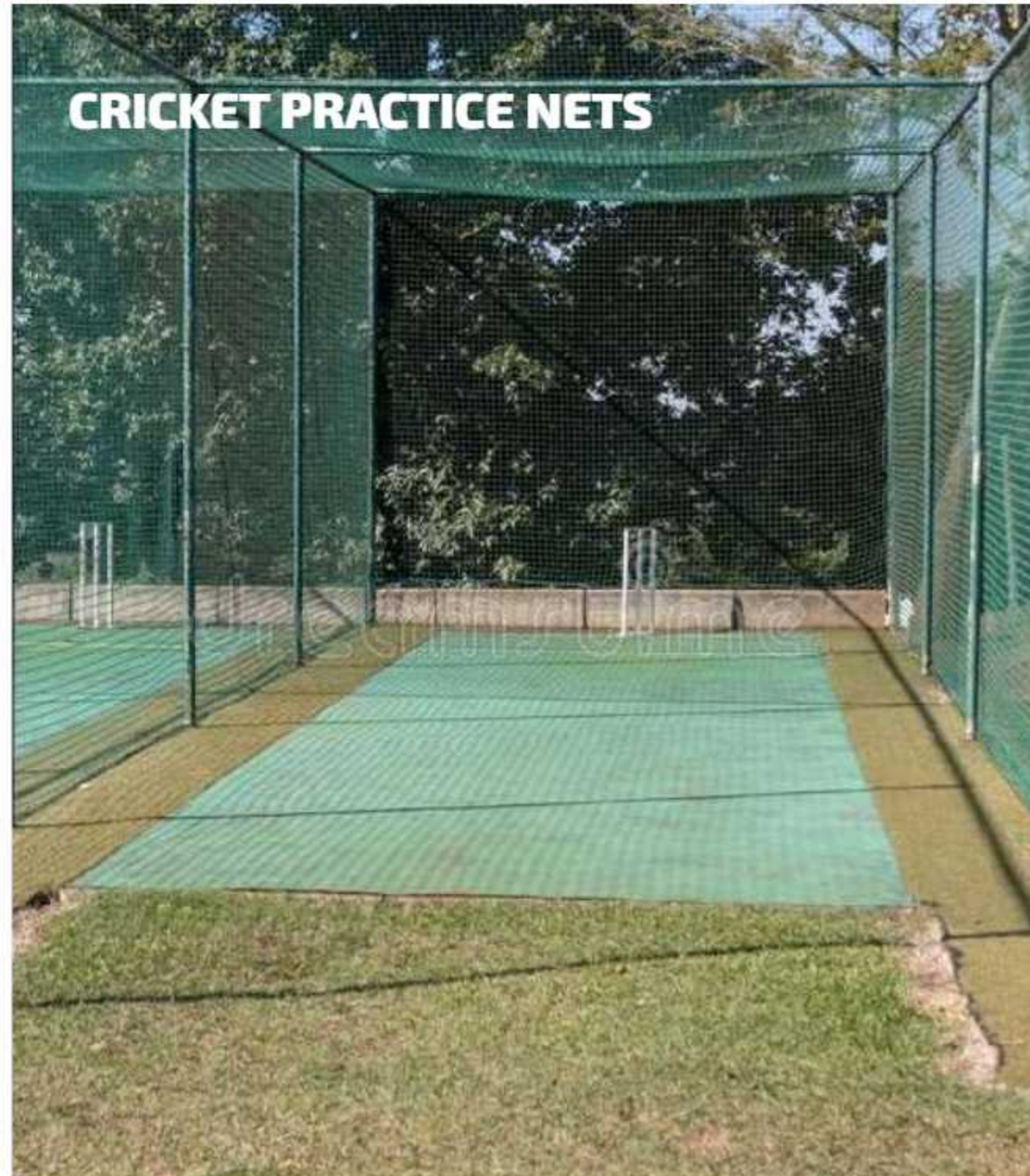
ROOF TOP PRIVATE PARTY



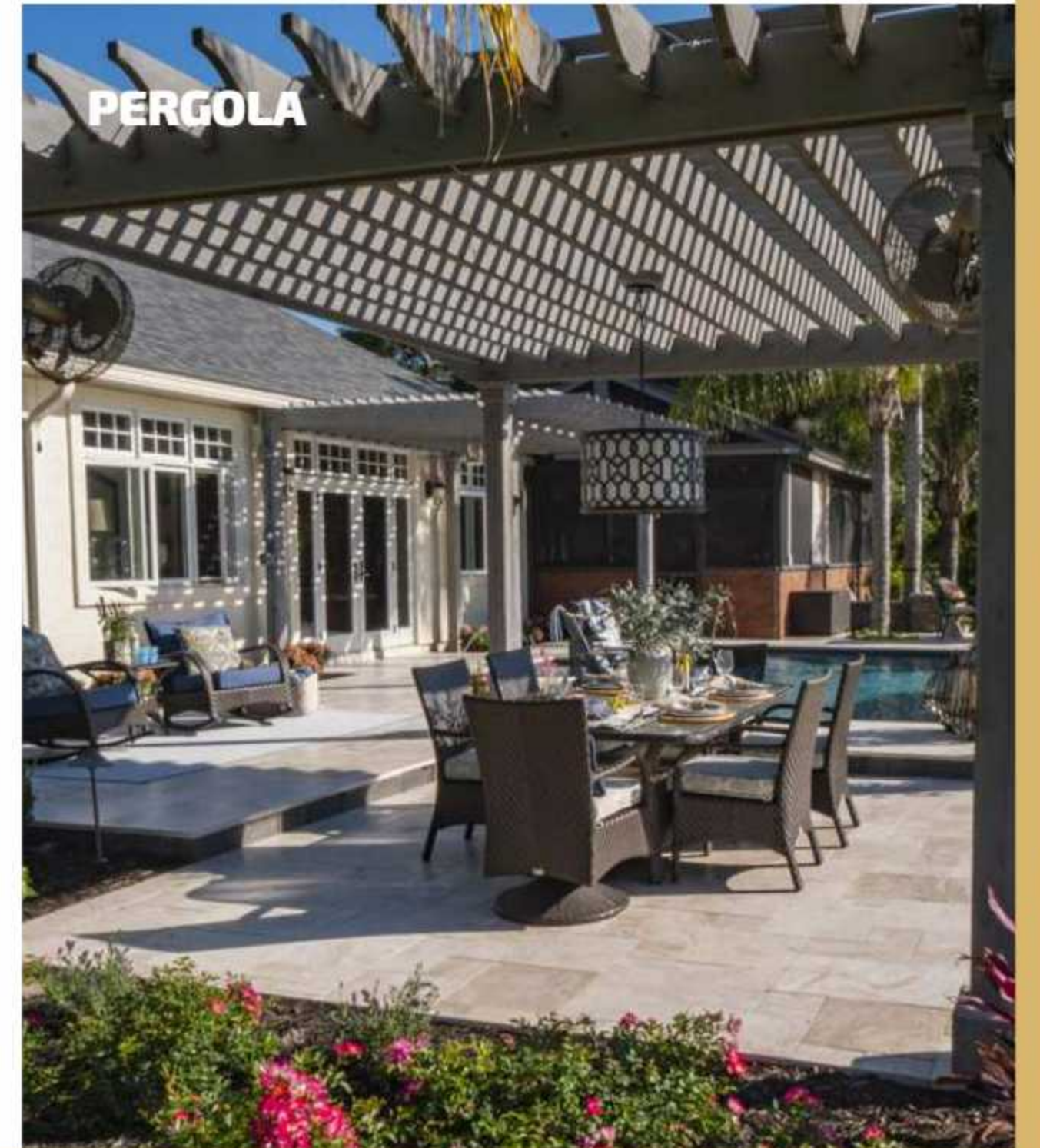
HAMMOCK ZONE



CRICKET PRACTICE NETS



PERGOLA



RAIN WATER HARVESTING PLANT



EV CHARGING



WATER SOFTENING PLANT



CCTV SURVEILLANCE





TWINZ

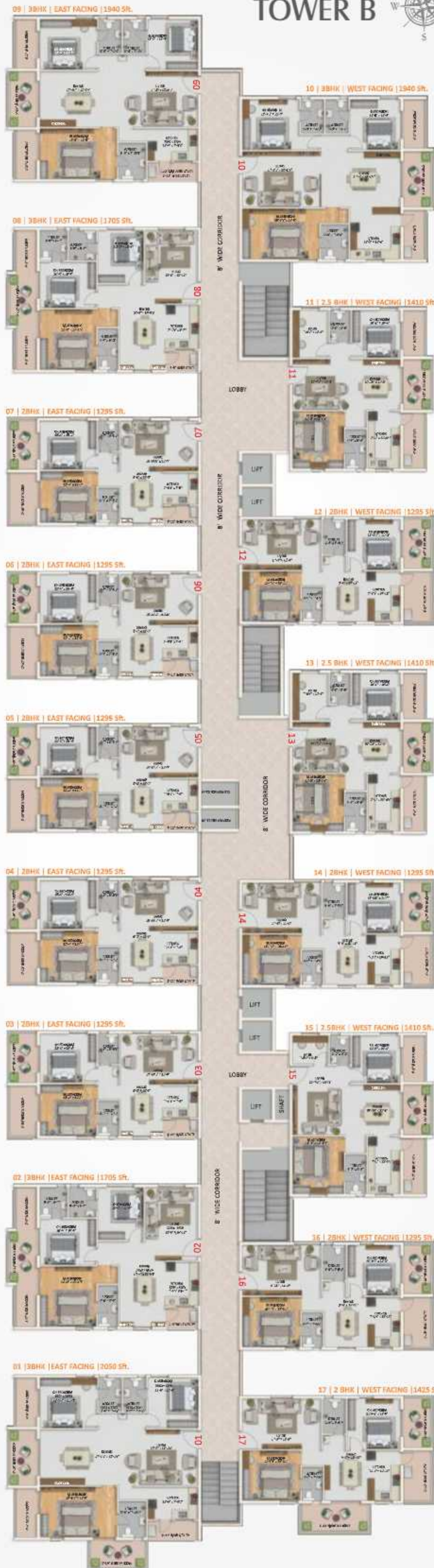
3 ACRES OF LAND

2 TOWERS

555 EAST/WEST FACING UNITS

2 CELLARS + STILT + 15 FLOORS

TOWER B



TOWER B

01 | 3BHK | EAST FACING | 2050 Sft.

02 | 3BHK | EAST FACING | 1705 Sft.

03 | 2BHK | EAST FACING | 1295 Sft.

04 | 2BHK | EAST FACING | 1295 Sft.

05 | 2BHK | EAST FACING | 1295 Sft.

06 | 2BHK | EAST FACING | 1295 Sft.

07 | 2BHK | EAST FACING | 1295 Sft.

08 | 3BHK | EAST FACING | 1705 Sft.

09 | 3BHK | EAST FACING | 1940 Sft.

10 | 3BHK | WEST FACING | 1940 Sft.

11 | 2.5 BHK | WEST FACING | 1410 Sft.

12 | 2BHK | WEST FACING | 1295 Sft.

13 | 2.5 BHK | WEST FACING | 1410 Sft.

14 | 2BHK | WEST FACING | 1295 Sft.

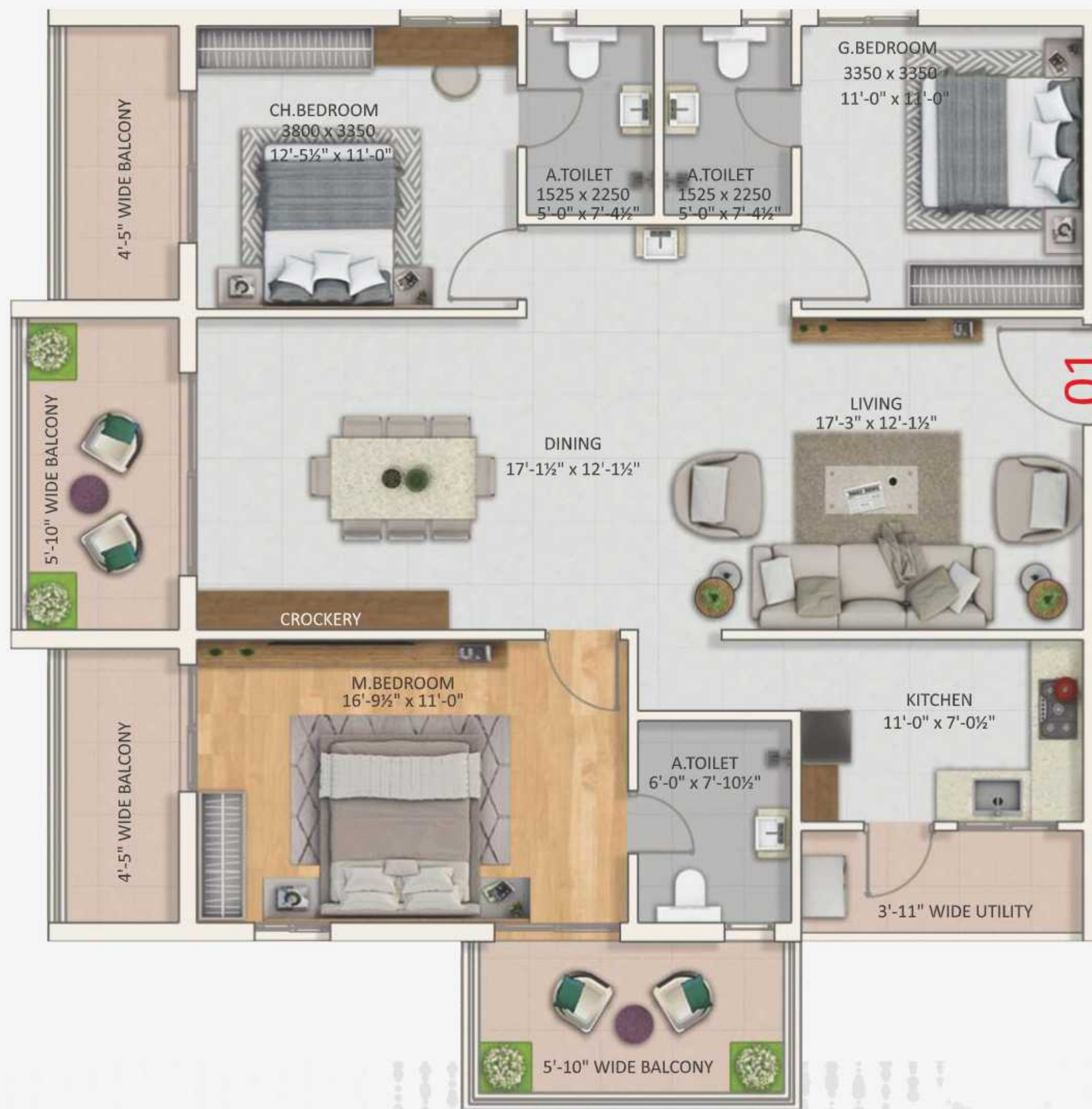
15 | 2.5BHK | WEST FACING | 1410 Sft.

16 | 2BHK | WEST FACING | 1295 Sft.

17 | 2 BHK | WEST FACING | 1425 Sft.

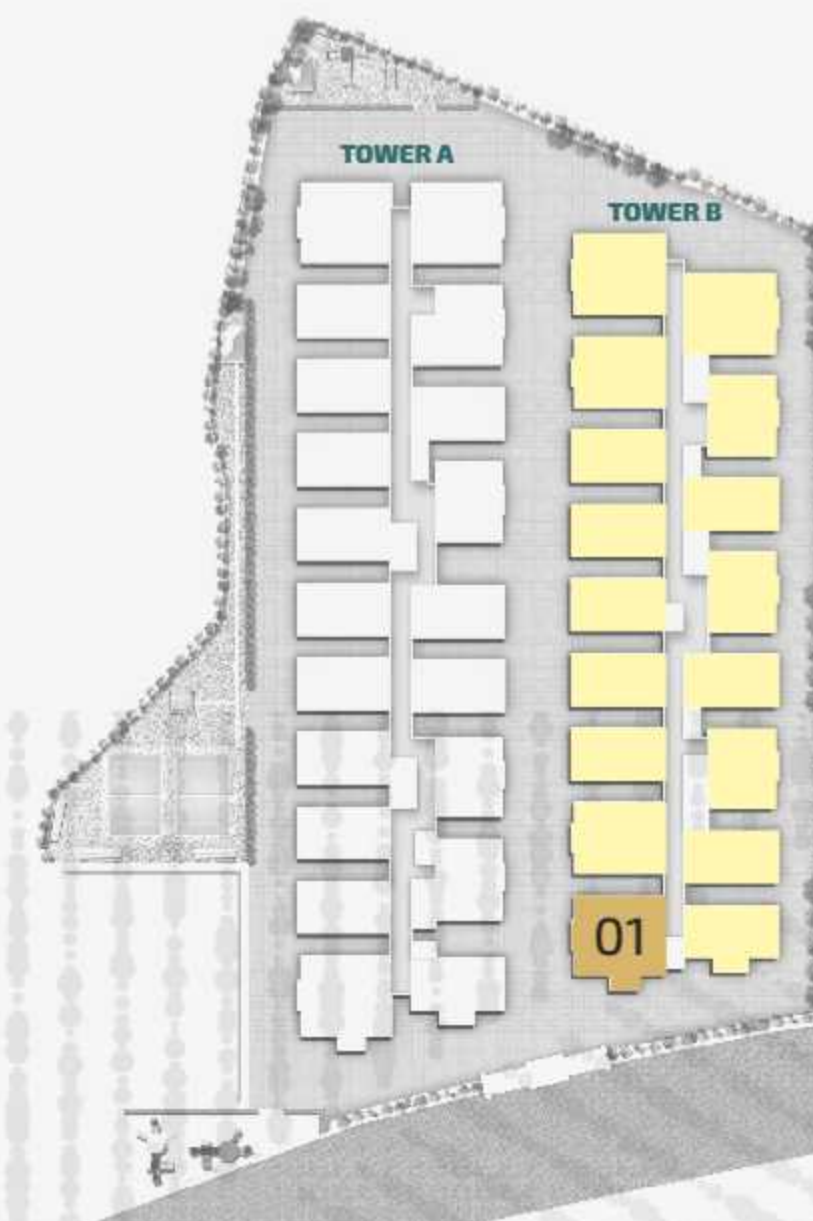


TYPICAL FLOOR PLAN - TYPE 1



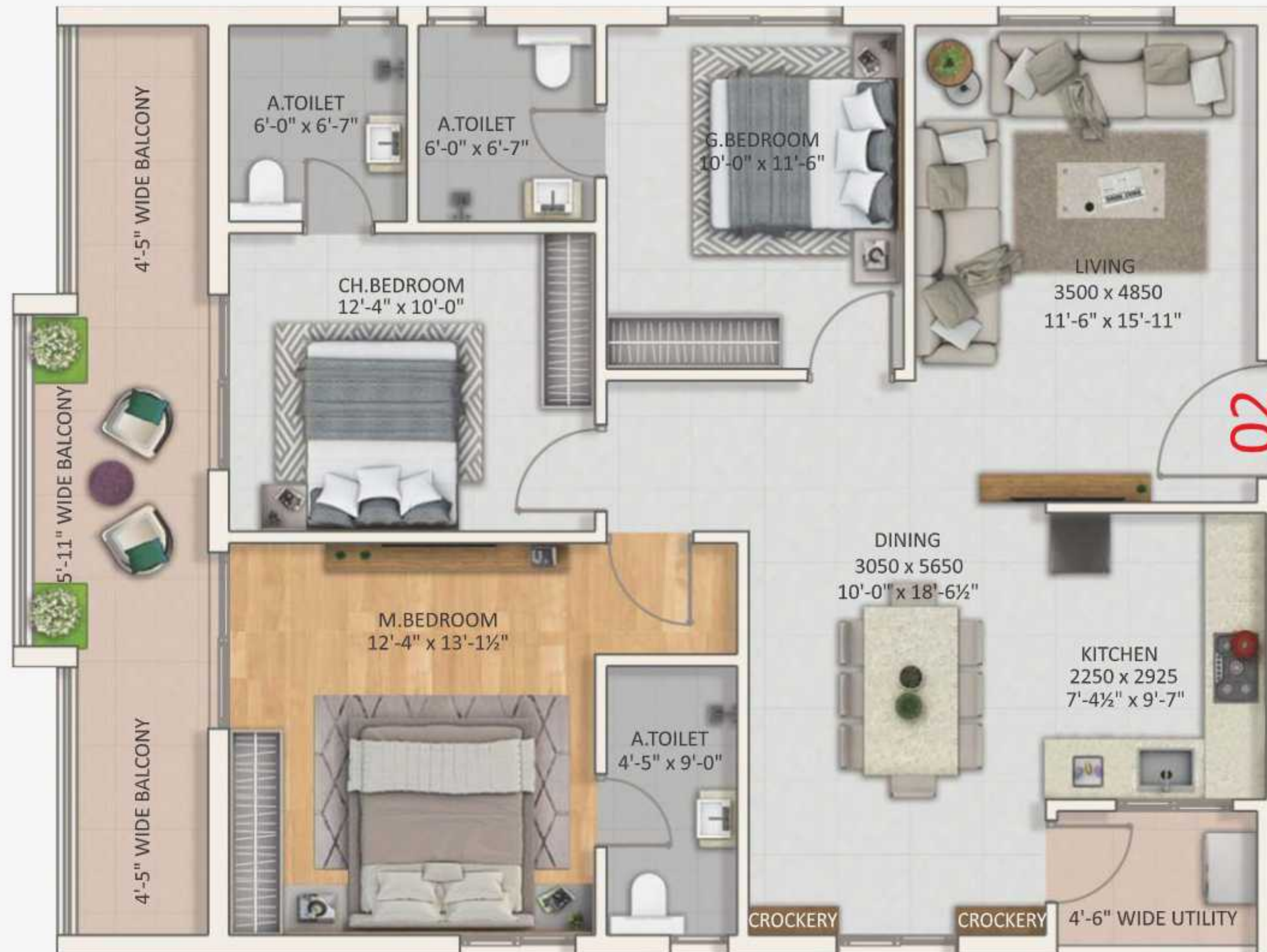
2010 SFT
EAST FACING

TOWER A	TOWER B
---	FLAT NO.: 1





TYPICAL FLOOR PLAN - TYPE 2



1705 SFT
EAST FACING

TOWER A	TOWER B
---	FLAT NO.: 2 & 8





TYPICAL FLOOR PLAN - **TYPE 3**



1295 SFT
EAST FACING

TOWER A	TOWER B
---	FLAT NO.: 3,4,5,6, & 7



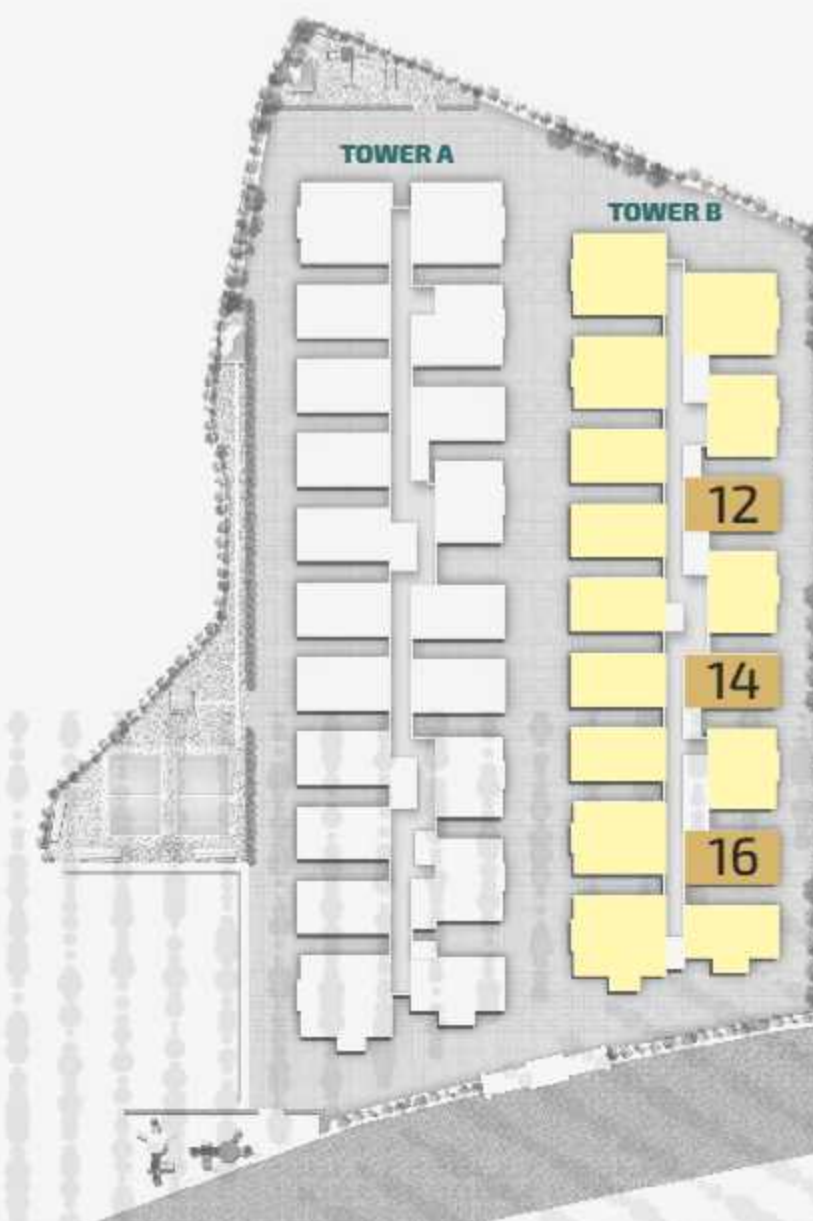


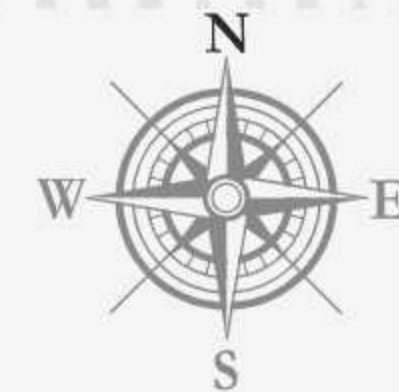
TYPICAL FLOOR PLAN - **TYPE 4**



1295 SFT
WEST FACING

TOWER A	TOWER B
---	FLAT NO.: 12,14 & 16



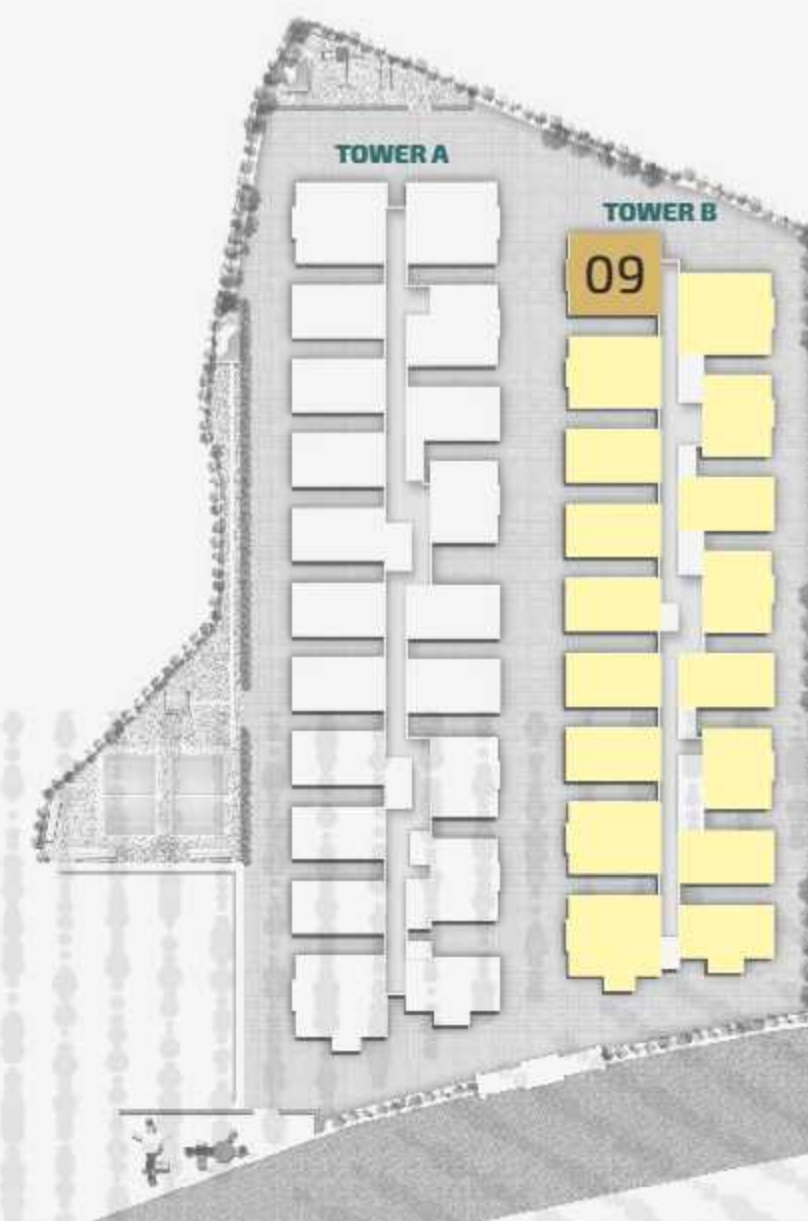


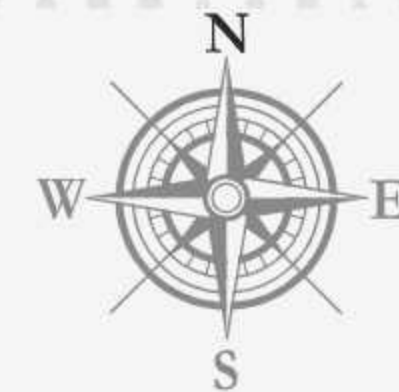
TYPICAL FLOOR PLAN - TYPE 5



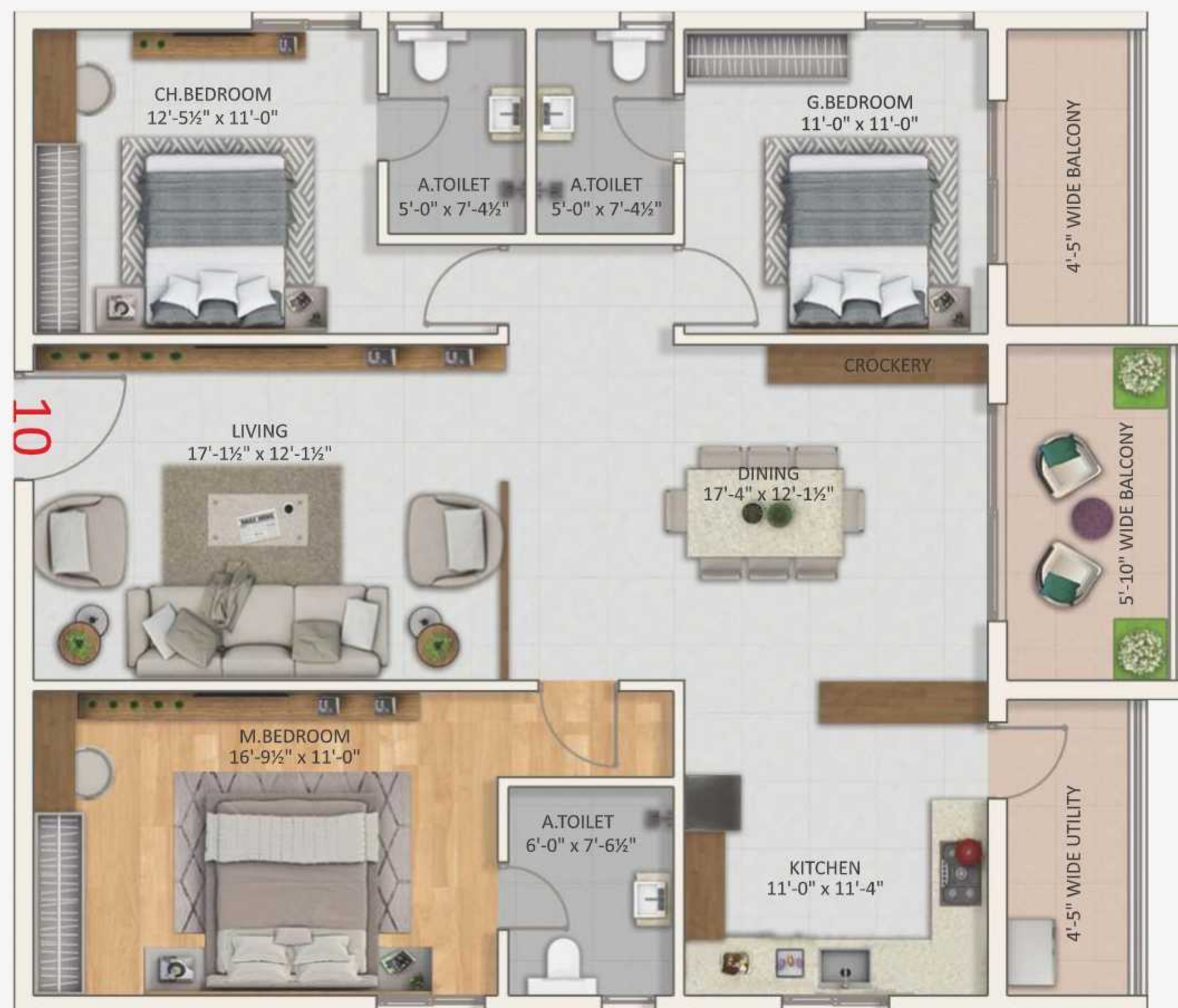
1940 SFT
EAST FACING

TOWER A	TOWER B
---	FLAT NO.: 9



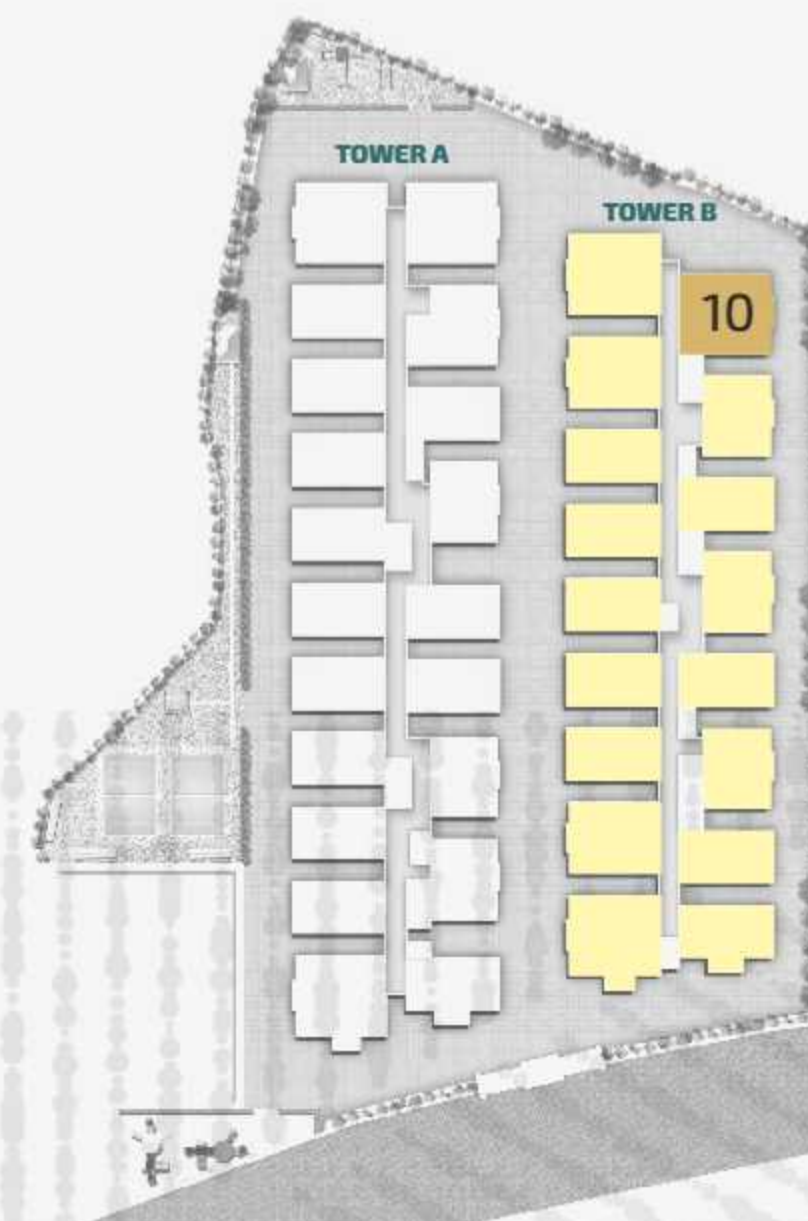


TYPICAL FLOOR PLAN - TYPE 6



1940 SFT
WEST FACING

TOWER A	TOWER B
---	FLAT NO.: 9





TYPICAL FLOOR PLAN - TYPE 7

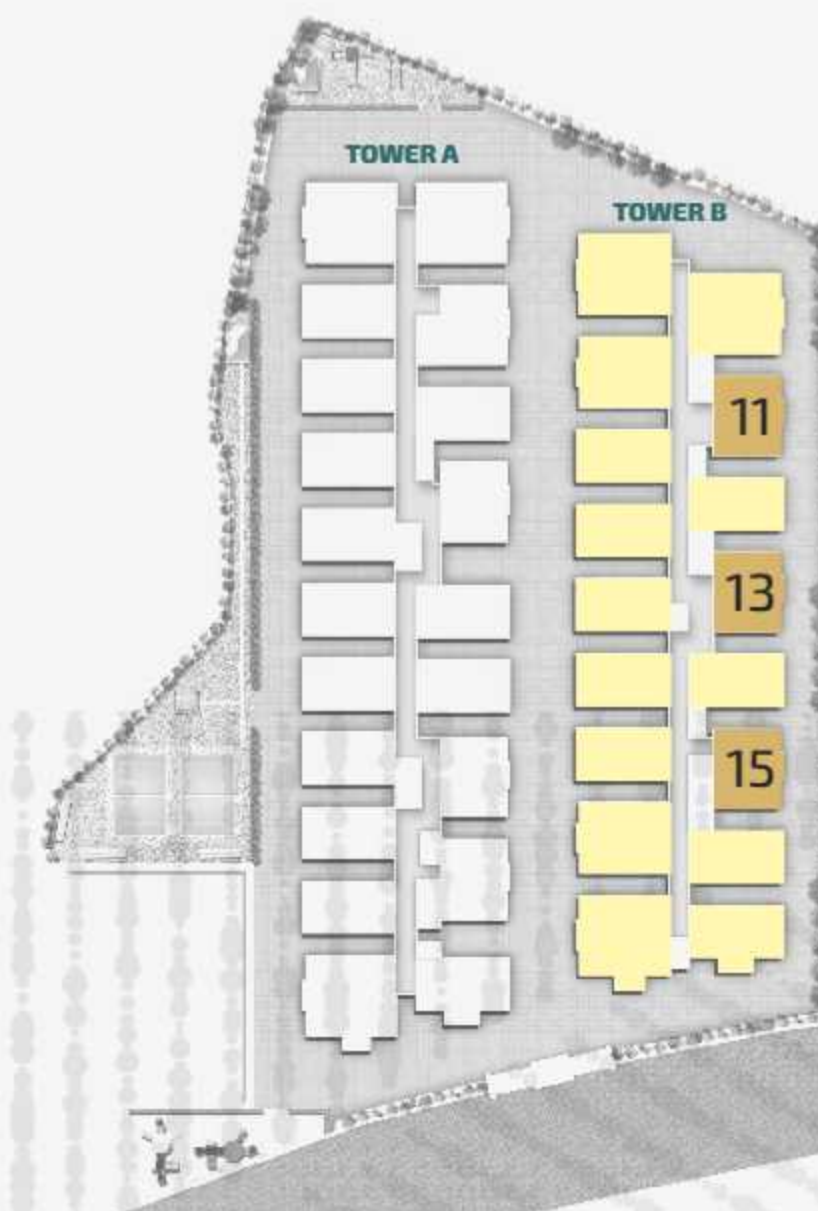


1410 SFT
WEST FACING

TOWER A

TOWER B

FLAT NO.: 11,13 & 15





TYPICAL FLOOR PLAN - **TYPE 8**



1425 SFT
WEST FACING

TOWER A	TOWER B
---	FLAT NO.: 17



Location Map (NOT TO SCALE)



EDUCATIONAL INSTITUTES

- + VNRVJIT 750 mtrs
- + Delhi Public School 2.4 kms
- + Ambitus World School 2.4 kms
- + The Creek Planet school 2.4 kms
- + Sri Chaitanya Jr. College 3.1 kms
- + DRK Engg. College 3.1 kms
- + Oakridge Int. School 4.0 kms
- + Silver Oaks Int. School 5 kms

OFFICES

- + Miyapur 15 mins
- + KPHB Metro Stn.15 mins
- + Cyber Tows 22 mins
- + Gachibowli 25 mins
- + Financial Dist.30 mins
- + RGI Airport 45 mins

HEALTHCARE

- + MAMS Hospital 4.5 kms
- + SLG Hospitals 4.5 kms
- + Usha Mullapudi Cardiac Centre 5.0 kms
- + Narayana Multispeciality Hospital 6.5 kms
- + OMNI Hospital 9.0 kms

Note: This brochure is purely a conceptual presentation and not a legal offering. The promoters reserve the right to make changes in elevation, specifications and plans as deemed fit.