

Back

Front

# Silver Pearl

**Developer**

AN ISO 9001:2008  
CERTIFIED COMPANY

**Architect**

Neha Consultant

**Site Address**

“SILVER PEARL”  
b/h Ganesh Meridian, Nr. Gujarat High Court,  
S.G. Highway, Ahmedabad.

**Contact**

+91 99985 58099  
+91 99985 81399

info@nbdeveloper.co.in  
www.nbdeveloper.co.in

design@identix.in/9099318181

# Silver Pearl

1 & 2 BHK Apartments



# *Silver Pearl*

## **A HOME IS YOUR DREAM WORLD**

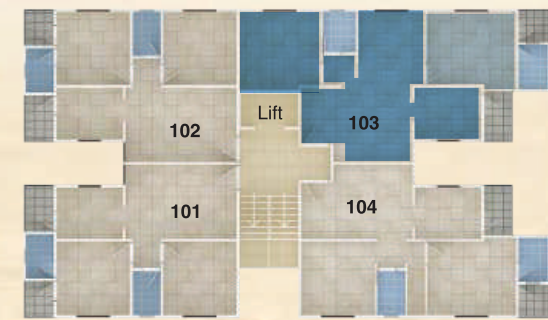
It gives you feeling and atmosphere to enjoy your relations better and nurture your dreams into reality. A Comfortable Living, which give you the freedom to create and experience the harmonious life with special Design. Our aim of name "SILVER PEARL" because "SILVER" is a real and pure part of metal and it will look like desire combination with "PEARL". SILVER PEARL is an example of our creativity where you can feel golden moments of your life. The main agenda of NB Developer to create Top quality construction, Thoughtful amenities and after sell service. Your Smile is our Real Estate.

**--- Simple Living and Higher Thinking ---**

*A home where life is full of joy and excitement*



# Phase 1 Block Layout



Block-A



Block-B



Block-C



Block-D (Type 1)

### Phase 1 Block Layout



Block-D (Type 2)



Block-E

Typical 1 BHK



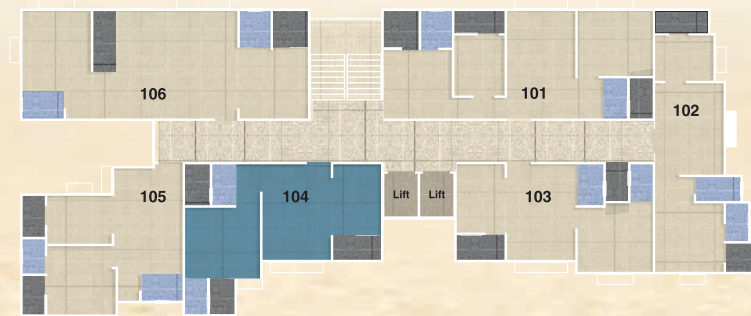
Typical 2 BHK



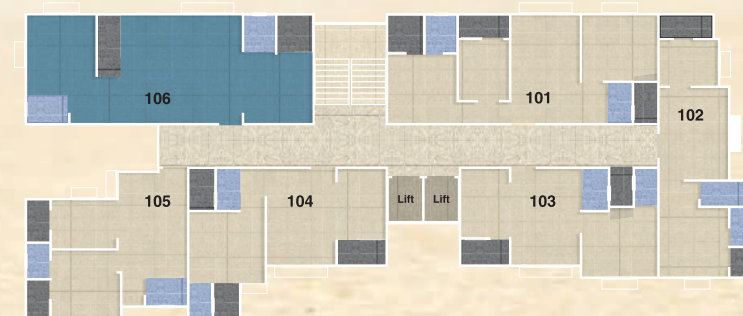
# Phase 2 Block Layout



Block-F



Block-G (Type 1)

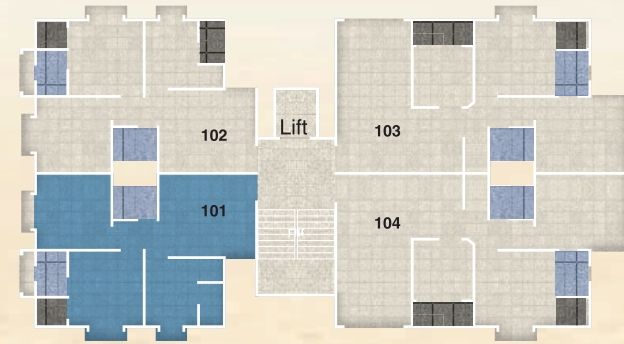


Block-G (Type 2)

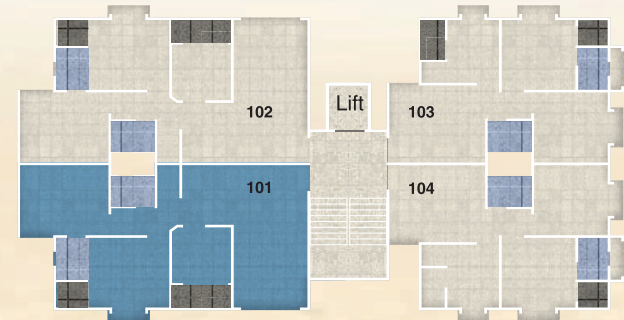


Block-H

# Phase 2 Block Layout



Block-I



Block-J





*A perfect balance between  
your Needs and your Dreams*

This brochure is for information purpose only. It does not form a part of the agreement or any legal document.

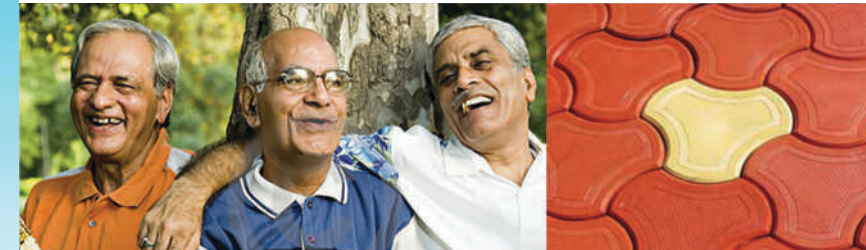
## Amenities



SECURITY

CCTV CAMERA

24 HOURS WATER SUPPLY



SEATING FOR SENIOR CITIZEN

PAVED ROADS



OPEN AIR THEATER

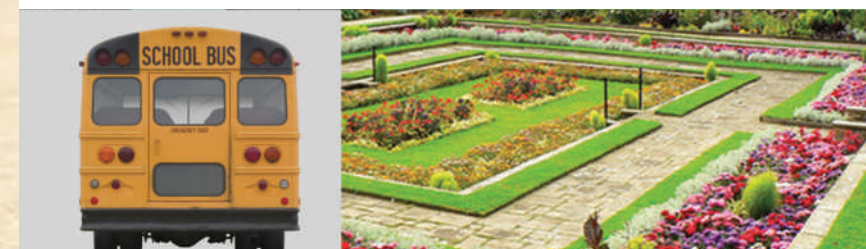
ENTRANCE GATE



INTERCOM PHONE

FULLY AUTOMATIC LIFTS

KIDS PLAY AREA



PICK-UP ZONE

LANDSCAPE GARDEN

## SPECIFICATIONS

### STRUCTURE

- RCC Framed Structure.

### PLASTER

- External double coat sandface plaster.
- Internal mala plaster.

### FLOORING

- Vitrified tiles in living, dining and all other bed rooms.
- Anti-skid ceramic tiles in all balconies.

### KITCHEN

- Black granite counter.
- Vitrified tiles in flooring and dado upto 7' height.
- Kota flooring and ceramic dado in utility.

### PAINTING

- External walls with acrylic water proofing paint.
- Putty on all internal wall.
- All railings in enamel paint.

### DOORS / WINDOWS

- Decorative main entrance door with wooden frame and all other doors with wooden flush door shutters & SS / brass fitting.
- Powder coated aluminum windows with heavy sections

### TOILETS

- Anti-skid ceramic tiles for flooring.
- Designer superior quality tiles on walls up to lintel level.
- All bathrooms with standard quality CP fittings.
- Water proofing treatment in all this area.

### TERRACE

- Water proofing treatment & china mosaic for heat reflection on common terrace.

### ELECTRIFICATION

- All electrical wiring is concealed with PVC pipes, modular switches and centralized distribution board with MCB's for total safety and protection.
- Sufficient power outlet and light points provided.

### WATER & DRAINAGE

- Rigid PVC pipes for drainage & water supply.
- Uninterrupted 24 hours water supply through own Borewell.

### OTHER FEATURES

- Termite treatment.

### NOTES :

- Stamp duty, Registration charges, AMC, Torrent and Legal charges would be charged extra.
- Service Tax, VAT or any such additional taxes would be charged extra.
- Maintenance deposit, maintenance charges would be charged extra.
- Any additional charges levied by the local Authorities / Government bodies etc. which is not existing at the time of floating of this project shall be an equal liability of all the members.
- All rights are reserved by developers to make any changes in this scheme.
- External changes strictly not allowed.