



**EARTH**

**For  
Citizens  
Of  
The  
World**

by VTP Luxe



WELCOME TO  
A WORLD OF THOUGHTFULNESS  
CRAFTED BY  
**PUNE'S NO. 1 REAL ESTATE BRAND\***  
& RANKED 5<sup>TH\*\*</sup> IN INDIA.



\*According to sales revenue. \*\*According to number of unit sold in FY - 2021-22



*Travel is more than the seeing of sights;  
it is a change that goes on, deep  
and permanent, in the ideas of living.*

*- Miriam Beard*



CALLING THE  
TRAVELLERS, THE  
GLOBETROTTERS,  
THE ONES WITH AN  
EVOLVED LIFESTYLE



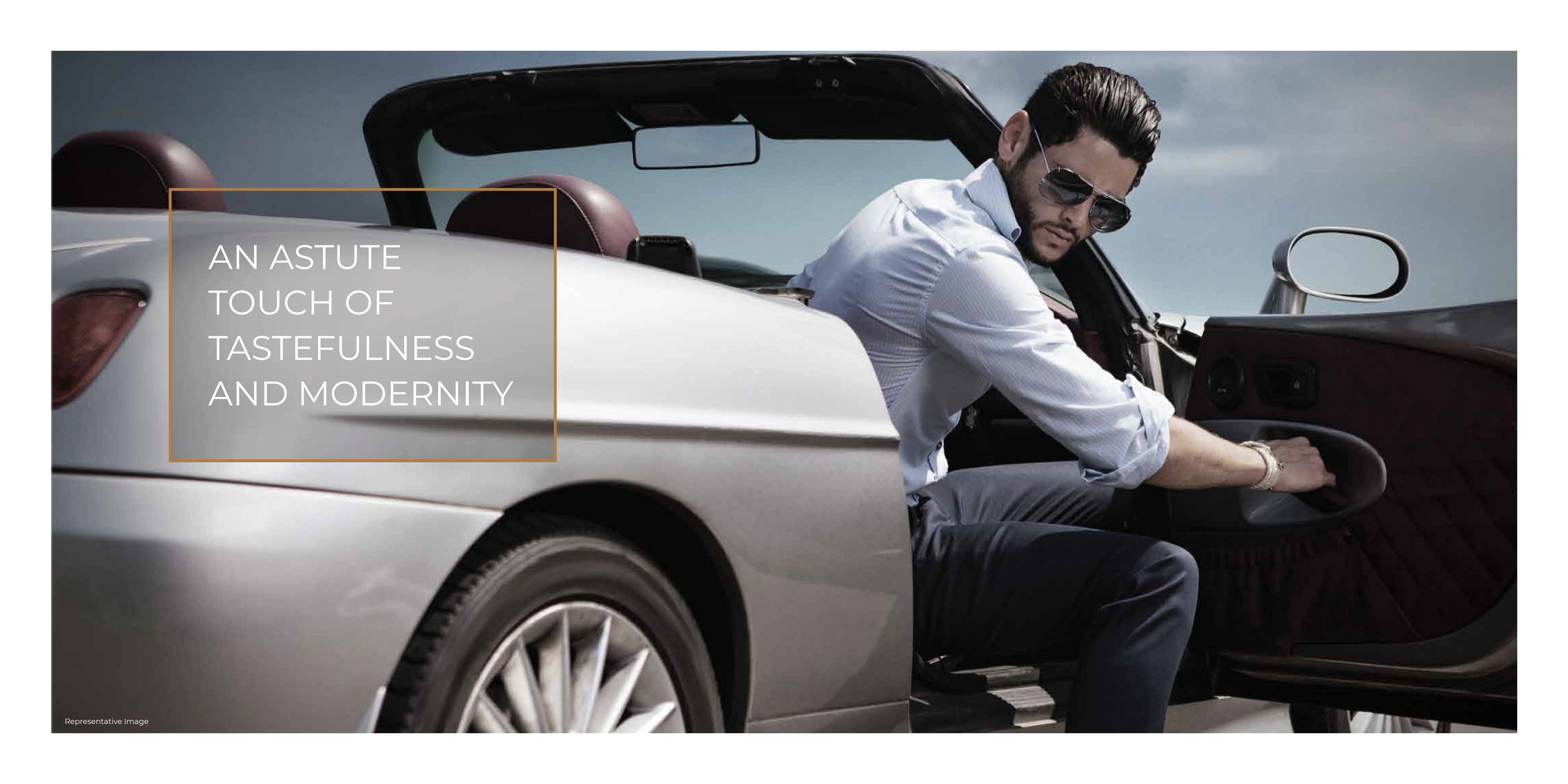
WHOSE HOMES  
HAVE ELEMENTS  
OF NATURE AND  
MODERNITY IN  
EQUAL ABUNDANCE

A woman with long brown hair, wearing a grey knit beanie and a blue jacket, is looking out a window. The scene is bathed in warm, golden light from the sun, creating a soft glow. In the foreground, there are green leaves of a plant. The overall mood is peaceful and natural.

WHO LOVE  
NATURAL  
VENTILATION  
AND PLENTIFUL  
NATURAL LIGHT

WHO LOVE  
OPEN  
SPACES  
AND VALUE  
PRIVACY



A man with dark hair and a beard, wearing sunglasses and a light blue button-down shirt, is sitting in the driver's seat of a silver convertible car. He is looking out the window to his right. The car has a dark interior with leather seats. The background is a clear blue sky.

AN ASTUTE  
TOUCH OF  
TASTEFULNESS  
AND MODERNITY

A man with a beard and glasses, wearing a white long-sleeved shirt and dark trousers, is riding a black mountain bike. He has a brown messenger bag slung over his shoulder and is wearing earbuds. The background is a modern building with a light-colored stone or concrete wall and a dark, slatted vertical panel on the left. The scene is captured from a low angle, emphasizing the man's movement.

WHO LIVE  
RESPONSIBLE  
AND AWARE

Introducing



---

2, 3 & 4 bed residences and  
spacious simplexes & duplexes  
for a globally aware lifestyle

# CALLING ALL CITIZENS OF THE WORLD!

The world is full of secrets to be discovered, and Earth 1 by VTP Luxe is Pune's best kept secret. Tucked away in the green environs of Mahalunge Hills, this is a private haven meant to offer an incomparable, global living experience. A lifestyle that many desire, the lifestyle you have come to lead. These homes set a new standard for Indian residences, combining artful aesthetics with thoughtful design to create a one-of-a-kind residential property that feels like it belongs among the best in the globe, both in appearance and function.

The address might say Pune, but Earth 1 by VTP Luxe belongs to the world.



A HAVEN AMIDST  
MAHALUNGE HILLS,  
THE MULA RIVER AND  
SYLVAN SURROUNDS

AND EVEN IF NATURE EVER  
FADES AWAY, WHAT WILL BE  
YOURS FOREVER IS THE HUGE  
CENTRAL OPEN AMENITY  
SPACE IN THE PROJECT

#OnlyInEarth1ByVTP





A 4 ACRE EXPANSIVE  
LANDSCAPE THAT'S  
YOURS FOR LIFE

#OnlyInEarth1ByVTP

AN ADDRESS OF PRIDE.

YOURS FOREVER.





MODERN INTERNATIONAL  
DESIGN THAT RESONATES  
WITH YOUR TASTE

[#OnlyInEarth1ByVTP](#)

A LARGER THAN  
LIFE ARENA WITH  
INNUMERABLE  
AMENITIES

#OnlyInEarthByVTP

306 Feet approx

427 Feet approx



THE WORLD CLASS  
EXTRAVAGANT  
CLUBHOUSE MEETS THE  
GLOBAL STANDARDS

#OnlyInEarth1ByVTP



AS WORK AND  
PLAY LINES BLUR,  
STAY EQUIPPED  
FOR TOMORROW

#OnlyInEarth1ByVTP



# PROJECT MASTER PLAN

## FAMILY

1. Clubhouse:
  - Two multipurpose halls (2000 sq.ft with extension into party lawn & another one of 1400 sq.ft)
  - Gymnasium (1850 sq. ft.)
  - Changing rooms
  - Indoor games room with Table tennis & pool table (1200 sq. ft.)
  - Viewing deck (420 sq. ft.)
2. Large swimming pool with vanishing edge
3. Jacuzzi (23 ft. x 13 ft.)
5. Floating deck
6. Bubbler bed
7. Two party lawns
8. Cove seating
9. Pavilion & pergola
11. Sit-out
12. Amphitheater
13. Chit-chat plaza
14. Food / catering arena
15. Jogging & cycling track
17. Meditation / yoga lawn
18. Stage
19. Ribbon shaped seat
20. Flower garden
21. Zen garden
26. Swing plaza
34. Multiple landscape lawns
35. Herbal garden

## KIDS

4. Kids pool (23 ft. x 13 ft.)
22. Sand bed
24. Children play area
25. Rock climbing wall

## SENIOR CITIZEN

16. Acupressure pathway
23. Senior citizen lawn
27. Senior citizen plaza with chess

## WORK FROM HOME

1. Meeting room (Inside clubhouse)
1. Work from home facility (Inside clubhouse)
10. Solar pods with sitting area

## SPORTS

28. Skating rink
29. Multipurpose court
30. Net cricket
31. Tennis court (58 ft. x 117 ft.)
32. Half basket ball court (2420 sq. ft.)
33. Mini golf lawn (2500 sq. ft.)

\*There may be minor changes in the final plans.

A wide-angle photograph of a resort pool area at dusk. The pool is a large infinity pool with a mosaic tile edge and a waterfall. In the background, a modern building with a curved roof and large glass windows is illuminated. The scene is surrounded by palm trees, colorful flowers, and a well-lit walkway. A tall apartment building is visible on the right side of the image.

# VANISHING EDGE SWIMMING POOL WITH AN ISLAND

You are limitless. Experience a feeling of déjà vu in our extra-large infinity pool. Bask on the island as you read the latest bestseller. Or just do nothing. It's your dominion.

Large sized infinity pool | Kids pool | Jacuzzi | Floating Deck | Bubbler Bed

**#OnlyInEarth1ByVTP**



## A GLOBAL LIFESTYLE FOR YOUR FAMILY

Every amenity is meticulously detailed and immaculately appointed. You have lived around the world. Your expectations are global after all. Stylish and world-class interiors, spacious and modern gym, indoor games room and a large viewing deck for family and friends.

**#OnlyInEarth1ByVTP**

FITNESS CLUB

ACHIEVE YOUR  
FITNESS GOALS  
IN STYLE

Sweat it out in the fully equipped, 1850 sq.ft. lavish  
gymnasium

**#OnlyInEarth1ByVTP**



## YOUR LIFE IS A CELEBRATION. MAKE IT TRULY SPECTACULAR

Two large multipurpose halls and a lavish party lawn. Whether its an intimate setting or a large gathering be ready to dazzle. Let the guests admire your generosity. Envy might also be involuntarily displayed.

**#OnlyInEarth1ByVTP**

# A KINGDOM FOR THE LITTLE MONARCHS

Large kids' pool, sand bed, huge play area (7,500 sq.ft.) and a rock-climbing wall. Let the kids experience the elements of nature in the safety of your home. Let them grow up fulfilled.

**#OnlyInEarthByVTP**



# A HAVEN FOR GOLDEN CITIZENS

Exclusive 8000+ sq.ft. for senior citizens with lots of activities to make sure they do not have a dull moment. Dedicated lawns, life-size chess, chit-chat plaza and many swings to chill and spend some time with friends and family. All, while they can keep an eye on their grandchildren playing nearby.

**#OnlyInEarth1ByVTP**

# EXPERIENCE A DEEPER SELF- CONNECTION

A no-pollution wellness zone to soak in the nature and its rich bounty.

- Meditation / Yoga Lawn
- Zen Garden
- Flower Garden
- Acupressure Pathway

**#OnlyInEarth1ByVTP**



# MINDFULNESS FOR THE NEW HYBRID WORLD

Work easy and with panache. Stylish solar work pods for an inspiring work setting amidst beautifully landscaped greens. Work unhindered without disturbing your family and even at odd hours. Because **you are global. You are beyond time zones.**

#OnlyInEarth1ByVTP



# SPORTING AVENUES FOR EVERY AGE AND AMBITION

Be spoilt for choice. Whether your ambition is to just stay fit, or to fly the tricolour on a global stage, we've got you covered. Choose outdoor sports ranging from cricket, lawn tennis, basketball, skating and mini-golf. There is a multipurpose court too for those with more eclectic pursuits.

**#OnlyInEarth1ByVTP**



TENNIS COURT

Artistic Impression



SKATING RINK

Artistic Impression



MINI GOLFING GREENS

Artistic Impression

Artistic Impression

THE

WOW

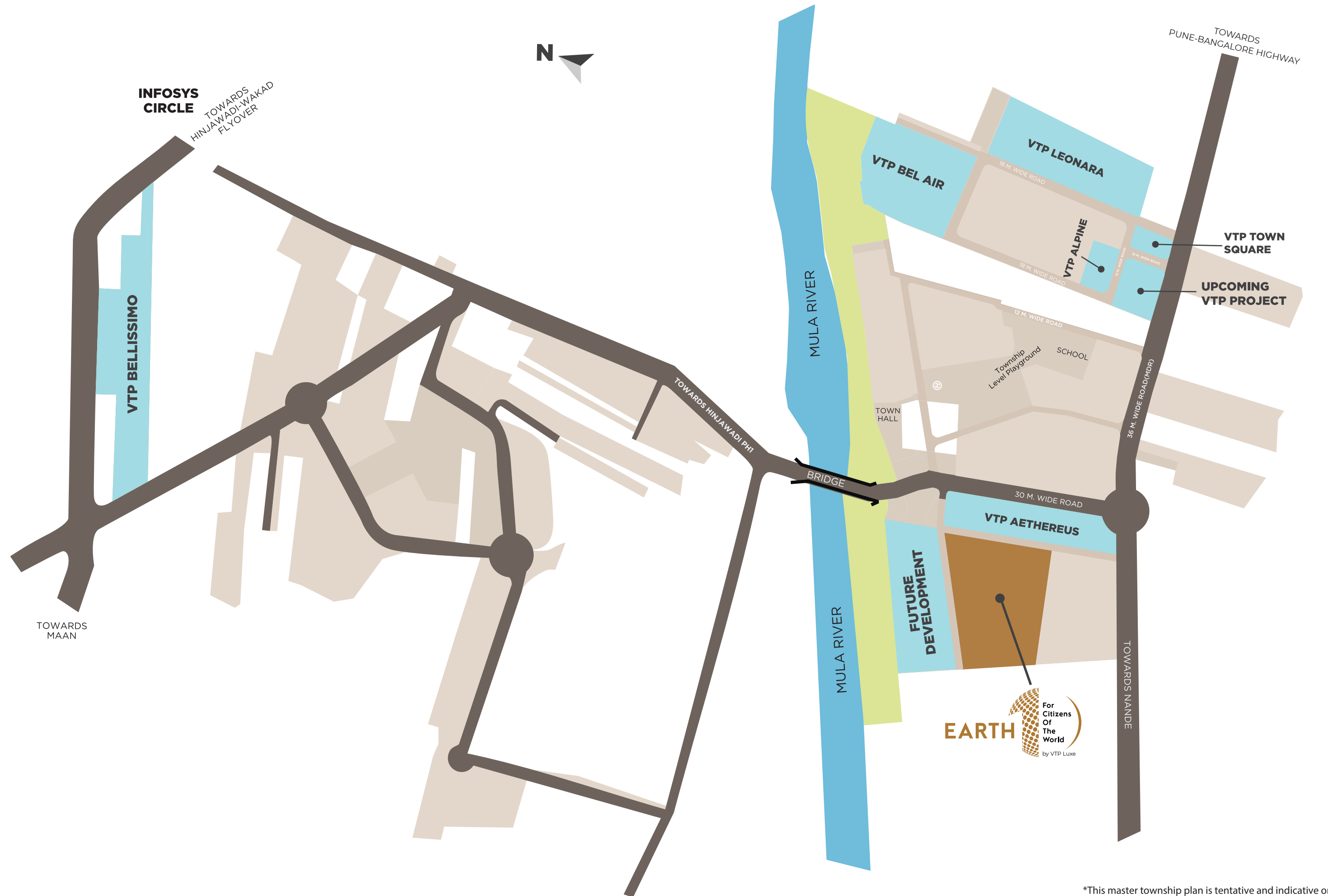


TOWNSHIP

# Tentative Plan

## TOWNSHIP CODENAME **BLUE WATERS**

6500+ families are already a part of the VTP Realty projects in the township.



\*This master township plan is tentative and indicative only



### HIGH STREET SHOPPING



### GRAND CLUB WITH PREMIUM LODGING & FACILITIES FOR GUESTS

### TOWNSHIP HIGHLIGHTS

- Multiple Grand Entrance Plazas
- Around 1km. Riverside Promenade
- Large Landscaped Zones
- Grand Club & Spa\*
- Yoga & Fitness Centre\*
- Well-Planned Internal Roads
- High-Street Shopping
- School & Creche\*
- Hospital, Police Station, Fire Station & Bus Stop
- Convenience Store



### RIVERSIDE PROMENADE

## THE WOW TOWNSHIP

Earth 1 by VTP Luxe sits nestled within the Township Codename Blue Waters. The entire township spans 200+ acres giving you a phenomenal gated community lifestyle. Once you've lived here though, the only word you'll use to describe it is "WOW". Township Codename Blue Waters is the crown jewel of the upcoming Mahalunge smart city destination, with easy access to every amenity one can ask for. The township also contains five international level sports coaching academies. Add to that the convenience of being near Wakad, Balewadi, Baner, Pashan, Aundh etc. and only a bridge away from Hinjawadi Phase 1. The location is surrounded by some of Pune's finest educational institutes. You will see why **Township Codename Blue Waters won "Integrated Township of the Year" Award at both the Realty Plus Excellence Awards and the Economic Times Leadership Awards in 2021.**



### CLUB & SPA

\*This amenity will be chargeable



Representative Image



Representative Image



Representative Image



Representative Image



Representative Image

## 5 PROFESSIONAL SPORTS ACADEMIES

The township has 5 Sports Academies Cricket, Swimming, Badminton, Lawn Tennis & Horse Riding operated by professional & celebrity coaches with international competition level courts. The facilities are pay-per-use to ensure that they do not unnecessarily burden your pocket.



## MAHALUNGE: PUNE'S GATEWAY TO A GLOBAL LIFESTYLE

A strong connect with nature, proximity to vibrant social avenues, smooth connectivity to educational and healthcare facilities, and an easy commute to workspaces nearby. There is only one address in West Pune that boasts the perfect combination of all these factors. Earth 1 by VTP Luxe.

Of course, the best homes balance work and play. Baner, Balewadi, Wakad, and Aundh are only a short drive away, promising a world of entertainment shopping and fine dine options. Students will enjoy the township's proximity to Pune University and some of city's best educational institutions.

Not to forget the quick access to Mumbai via the Expressway and the Pune-Bangalore highway.

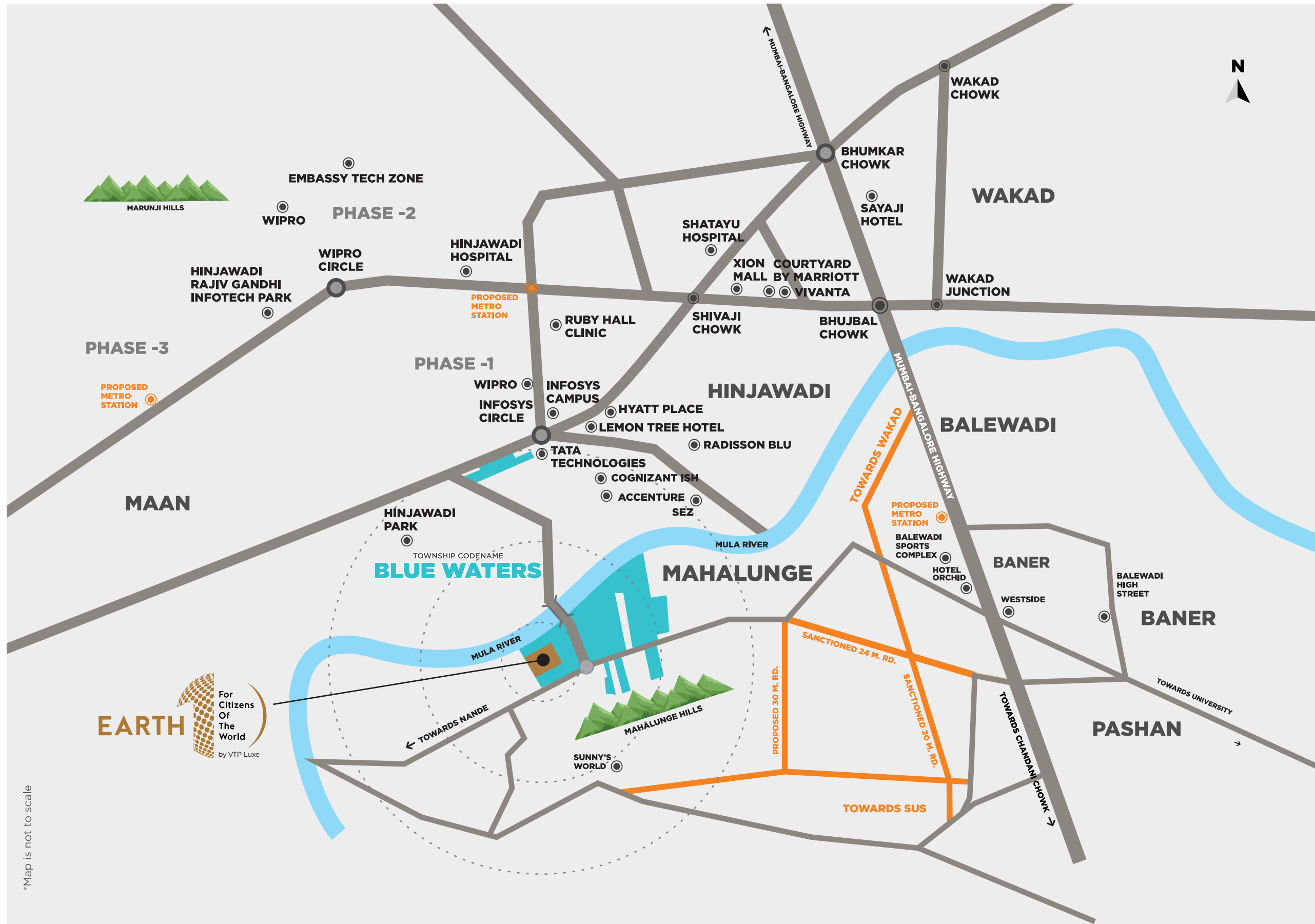


## GLOBAL LIVING SITS RIGHT BETWEEN THE MAAN-MAHALUNGE HI-TECH CITY & HINJAWADI IT HUB

For Pune's global citizens, Mahalunge makes the perfect address. The surrounding hills and Mula river provide nature vistas to take in from the comfort of your home, but its beauty is more than what meets the eye. Mahalunge isn't just attractive; it's also practical. Earth 1 by VTP Luxe sits right between the Maan-Mahalunge Hi-tech City development on one side and the Rajiv Gandhi Infotech Park in Hinjawadi on the other. Pune's booming demographic of IT professionals finally has the perfect place to call home.

## LOCATION ADVANTAGE

- Advantage **1** Live in nature's lap with the rolling **HILLS & RIVER IN THE NEIGHBOURHOOD**
- Advantage **2** **HUB** of the Maan-Mahalunge **SMART CITY** development
- Advantage **3** **MAHALUNGE** has a high appetite **FOR RENTAL** apartments due to proximity to workplaces. And townships attract higher rentals!
- Advantage **4** Mumbai is easily connected via **MUMBAI PUNE EXPRESSWAY**
- Advantage **5** **HIGH ON SOCIAL QUOTIENT** with plenty of leisure & entertainment options within the township
- Advantage **6** One can reach Baner, Balewadi High Street, Wakad, University Chowk or Chandni Chowk **IN UNDER 5 - 30 MINS.**
- Advantage **7** Hub of well-known **EDUCATIONAL INSTITUTES**
- Advantage **8** **A BETTER BALANCE** between work life and family life!



## IT'S ALL CLOSE BY, LIFE & LIFESTYLE



Easy Travel: Great connectivity with major transit hubs

Pune - Bangalore Highway NH-48	3.5 km
Upcoming Pune Metro Station	3.5 km
Balewadi High-Street	5.5 km
Bhumkar Chowk, Wakad	7 km
Pune Railway Station	17 km
Pune Airport	23 km



Finest education institute around

Global Indian International School (GIIS)	0 Km
Symbiosis Institute of International Business (SIIB)	3.9 Km
Mahindra International School	4.3 Km
International Institute of Information Technology	4.3 Km
Bliss International School	4.6 Km
Symbiosis Hinjawadi	4.7 Km
Blue Ridge Public School	5.3 Km
Vibgyor High School	5.8 Km
Alard College of Engineering and Management	7.1 Km
WS School Of Business Analytics and Data Science	7.8 Km
Sai Balaji International Institute of Management Sciences	9.3 Km
Flame University	10km



IT HUBS: Major companies are a short distance away.

Tata Technologies Ltd.	3 km
Cognizant	3 km
Infosys Phase 1	4 km
Persistent Systems	4 km
Birlasoft Ltd.	4 km
Globant India Pvt. Ltd.	4 km
HCL Technologies Ltd.	4 km
Wipro Ltd.	6 km
Cisco Systems Pvt. Ltd.	7 km



HOTELS & RESTAURANTS: Lifestyle in quick reach

Elusive Club and Kitchen	0.5 km
The Orchid Hotel	3.5 km
Hyatt Place	4.2 km
Lemon Tree	4.4 km
Hotel Blu Grass	4.5 km
Mezza 9	4.8 km
Hippie @ Heart	5 km
Ramada Plaza By Wyndham	5.4 km
Hotel Tip-Top International	7.1 km
Sayaji Hotel	7.6 km
Barbeque Nation	7.6 km
Vivanta	8 km
The Tenth Floor	8.8 km
Holiday Inn	8.8 km
Courtyard By Marriott	9.3 km



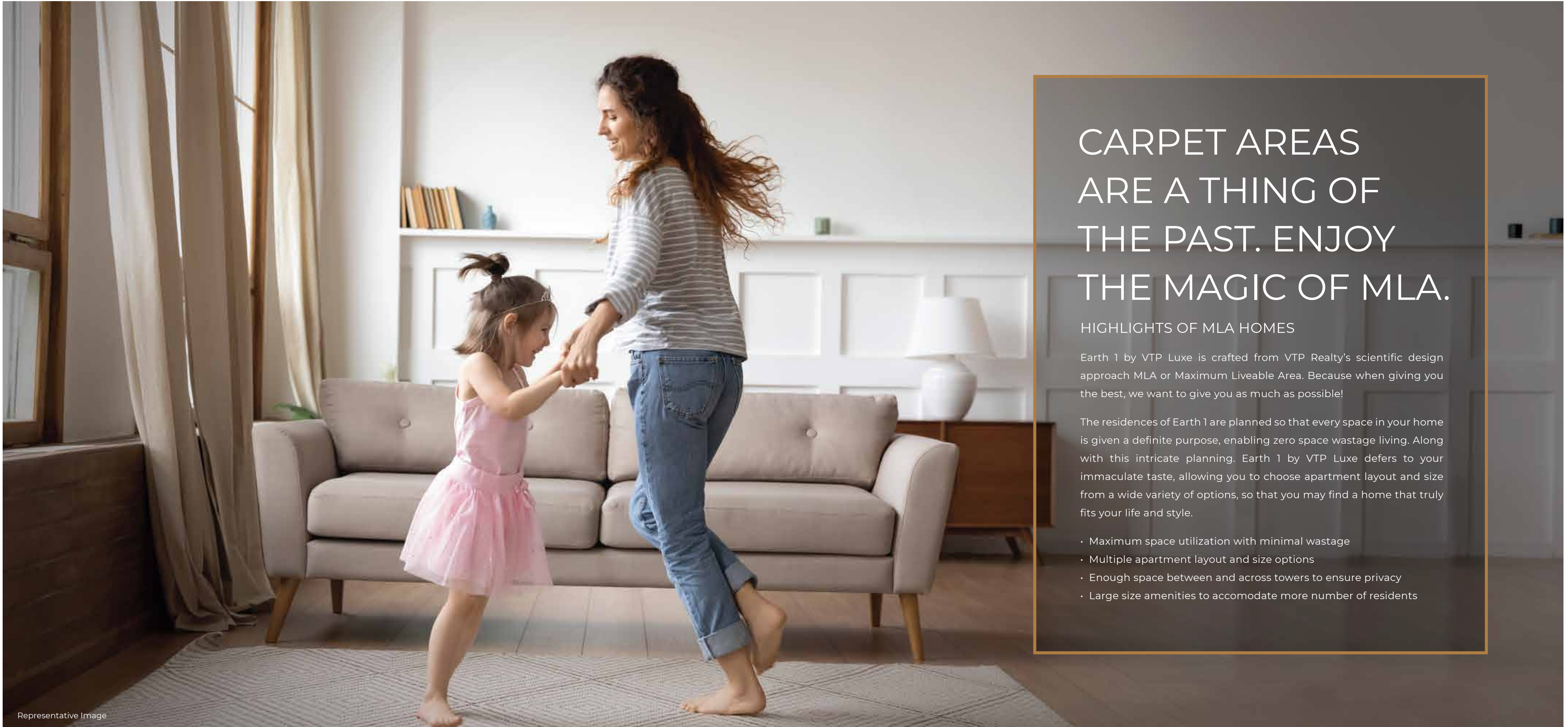
Health & Wellbeing is also not far away

Ruby Hall Clinic, Hinjawadi	4.5 km
Sanjeevani Multispeciality Hospital	5.4 km
Golden Care Hospital	6.6 km
Jupiter Hospital	6.6 km
Surya Mother & Child Hospital	6.8 km
Life Point Hospital	7.4 km
Phoenix Hospital	10.5 km
Aditya Birla Memorial Hospital	10.5 km

\*Map is not to scale

DISCLAIMER: Maps or statements showing the location of developments are stylised and only show the approximate direction towards locations of developments. They do not necessarily be taken to indicate the location or status of rights of way, highways, transport links or any other geographical features. Descriptions of roads and public transport routes, distances and connection times are based on publicly available timetables and the burden of determining the accuracy and correct timeline for or the appropriateness for use rests solely with the user accessing the information. The User acknowledges and accepts all inherent limitations of the maps and data to be dynamic and also acknowledges that the same is artistic impression and is in a constant state of maintenance, correction and revision. No express or implied liability is assumed for the accuracy of the delineated data towards the Developer.





# CARPET AREAS ARE A THING OF THE PAST. ENJOY THE MAGIC OF MLA.

## HIGHLIGHTS OF MLA HOMES

Earth 1 by VTP Luxe is crafted from VTP Realty's scientific design approach MLA or Maximum Liveable Area. Because when giving you the best, we want to give you as much as possible!

The residences of Earth 1 are planned so that every space in your home is given a definite purpose, enabling zero space wastage living. Along with this intricate planning, Earth 1 by VTP Luxe defers to your immaculate taste, allowing you to choose apartment layout and size from a wide variety of options, so that you may find a home that truly fits your life and style.

- Maximum space utilization with minimal wastage
- Multiple apartment layout and size options
- Enough space between and across towers to ensure privacy
- Large size amenities to accommodate more number of residents

# SIGNATURE ELEMENTS FOR SIGNATURE LIFESTYLES

## #OnlyInEarth1ByVTP

### MAKE A GRAND ENTRANCE!

- Grand project entrance gate
- Grand and aesthetically designed entrance lobby for each tower, giving you a royal welcome every time you come home.
- Our lobbies are visitors envy and owners pride!



### LARGE SIZED MARBLE FINISH GLAZED VITRIFIED TILES

- The aesthetic glamour of marble with the easy convenience & durability of vitrified tiles
- Units of 1200 sq.ft. & above:  
Living, Dining, Kitchen & Lobby – 6' x 4' (1800 x 1200 mm)  
Bedrooms - 5'4" x 2'8" (1600 x 800 mm)
- Units under 1200 sq.ft.:  
Living, Dining, Kitchen, Bedrooms & Lobby - 5'4" x 2'8" (1600 x 800 mm)



### LARGE WINDOWS

- Another hallmark of Earth 1 Homes are large windows. Much bigger than regular windows provided by all other developers
- Huge windows in living and bedrooms mean, ample natural light and ventilation, thus reducing the usage of power for lighting and cooling
- Adds to the opulent appeal of your home



### VENEER FINISH MAIN DOOR

- Premium appeal of your home begins even before you enter
- Durable and easy to maintain

### DIGITAL LOCK

- Digital lock provides you safety, aesthetics, convenience with superior look
- Latest technology with Yale or equivalent
- Can be operated via biometric, mechanical key & PIN



Representative Image

### LUXURY LUSTRE PAINT

- Smooth finish
- Excellent stain resistance
- Easy to clean
- No maintenance for long run



Representative Image

### AESTHETICALLY DESIGNED BALCONIES / TERRACES

- Balcony / Terrace with toughened glass with S.S. railings & masonry wall for utmost safety
- PVC false ceiling with LED spot lights for all balconies / terraces

### ENJOY A 5 STAR BATHROOM RIGHT AT HOME

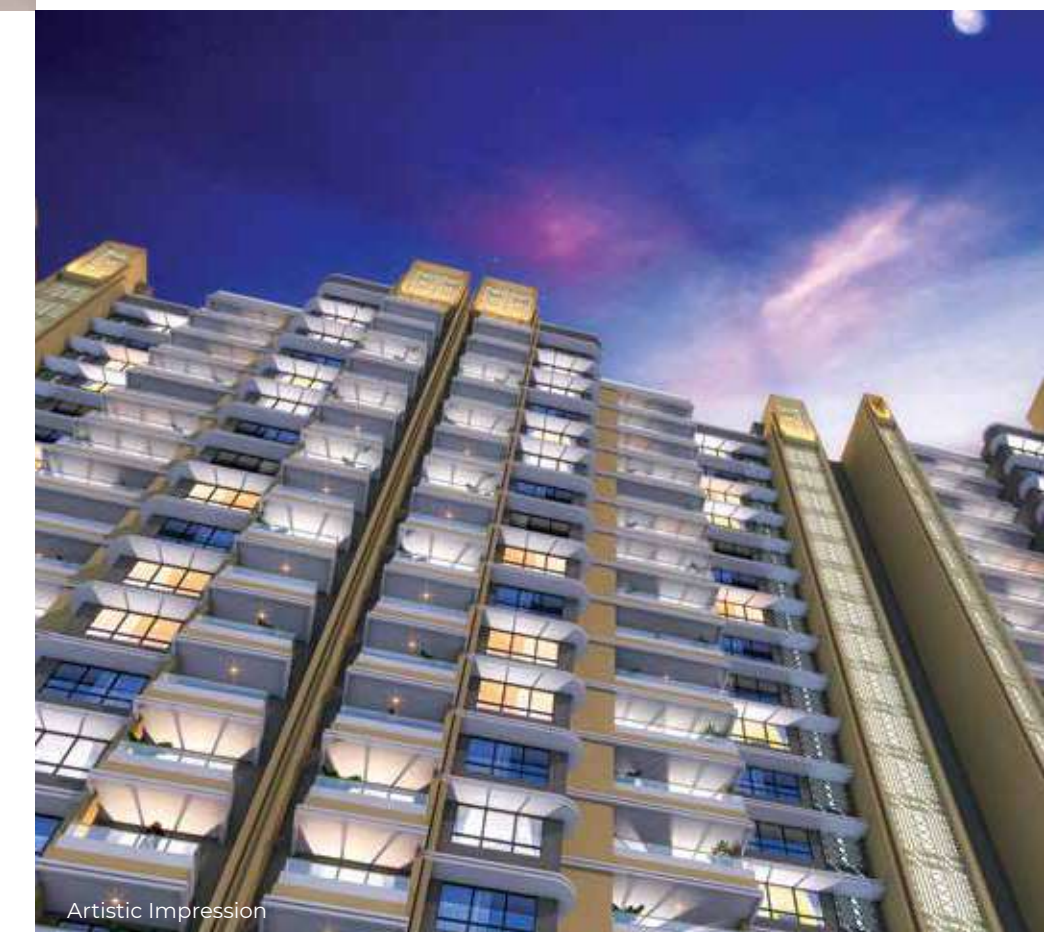
- Granite door frames
- Designer CP & sanitary fittings – Grohe / Kohler / American Standard / Toto or equivalent
- Multi functional shower head in all master baths
- Glass partition in master toilet (only 3 & 4BHK)
- Bathtub in master toilet (Only in 1446.57 & 1766.90 sq.ft. size units)
- Designer tiles in all washrooms
- Motion sensor lights in all bathrooms
- Geyser point in all bathrooms



Representative Image

### SMART HOME FEATURES

- Digital lock - Yale or equivalent
- Featherlike touch pad switches
- Smart Home Automation Control Hub
  - Provision for controlling Lights, AC, Fan & Geyser via a mobile app. Also compatible with Alexa\* & other voice command devices
  - Provision for mood lighting in the living room
- Motion sensor lights in all baths
- 3-tier security system and video door phone connected to the smart phone



Artistic Impression

# FINER DETAILS FOR A GLOBAL APPEAL

## PROJECT LEVEL

- 35 storeys in the launched towers
- Multi-level vehicle parking
- Grand entrance gate with security cabin
- Access-controlled stylish entrance lobbies for every tower
- 100% DG back-up for lifts & common areas
- Provision for electric vehicles charging points in common area
- Common washroom for drivers in the parking area
- Male & female servants living quarters (chargeable)
- Superior quality apex / texture / protective exterior paint
- Earthquake resistant RCC structure + ALUFORM construction

## INSIDE YOUR HOME

### SMART HOME FEATURES

- Digital lock - Yale or equivalent
- Featherlike touch pad switches
- Smart Home Automation Control Hub
- Provision for controlling Lights, AC, Fan & Geyser via a mobile app.  
Also compatible with Alexa\* & other voice command devices
- Provision for mood lighting in the living room
- Motion sensor lights in all baths
- 3-tier security system and video door phone connected to the smart phone

### INTERNAL FLOORING

- Large sized marble-finish glazed vitrified tiles
  - Units of 1200 sq.ft. & above: Living, Dining, Kitchen & Lobby – 6' x 4' (1800 x 1200 mm)
  - Bedrooms - 5'4" x 2'8" (1600 x 800 mm)
  - Units under 1200 sq.ft.: Living, Dining, Kitchen, Bedrooms & Lobby – 5'4" x 2'8" (1600 x 800 mm)
- Anti-skid ceramic tiles - Dry Balcony & Terrace

### INTERNAL WALL FINISHES

- Luxury lustre paint

### DOORS

- Premium veneer finished main door with digital lock
- Bedrooms & bathrooms - Laminated flush doors

### WINDOWS

- Powder coated aluminium sliding windows

### KITCHEN

- Premium kitchen platform with SS sink
- Ceramic / glazed tiles above kitchen platform of 2 feet
- Provision for water purifier
- Hot water provision in kitchen sinks

### BATHROOMS

- Granite door frames
- Designer CP & sanitary fittings – Grohe / American Standard / Kohler / Toto or equivalent
- Multi functional shower head in all master baths
- Glass partition in master toilet (only 3 & 4BHK)
- Bathtub in master toilet (Only in 1446.57 & 1766.90 sq.ft. size units)
- Designer tiles in all washrooms
- Motion sensor lights in all bathrooms
- Geyser point in all bathrooms

### PLUMBING

- Concealed anti-corrosive plumbing

### TERRACE / BALCONY

- Partial masonry wall in bottom and SS railing with toughened glass
- PVC false ceiling for terraces/balcony area with decorative lighting

### ELECTRICAL

- Switches – Anchor / Legrand / Schneider / L&T or equivalent
- Concealed copper wiring with M.C.B.
- AC points in all rooms except kitchen

### POWER & SAFETY

- Provision for inverter



## VTP REALTY'S EVER-EVOLVING LEADERSHIP

Pune is known to be a market that is driven by substance over style. It doesn't get swayed by lofty promises and hyperbole. Our deep understanding of Pune market has been the cornerstone of our stature as the undisputed market leader for the past four years. We too have embraced substance in every aspect of our offerings to steal the march.

Disruption is in our DNA. And possibly the secret of our sustained leadership going forward. We continue to challenge the status quo, question the conventions and raise the bar. It just so happens that now, we challenge our own benchmarks with every new project.

This has helped us deliver world-class developments that are not just holistic, but have futuristic and smart design language as well. Anchoring us is our world of thoughtfulness also, that is customer-centric and delivers delight at every step of the home ownership journey.

Our dynamic leadership obsesses over every aspect of each development that carries the VTP name, as well as every step of each customer's journey with us. No wonder the VTP family continues to grow with every passing day. Pune's youngest family is now more than 16,000 strong. And smiling.

## WORLD OF THOUGHTFULNESS

Fondly referred to as the turnaround specialist of Pune, VTP Realty is changing the way the real estate industry operates.

Years of sweat and goodwill has helped VTP Realty emerge as the leading real estate brand in the "Silicon Valley of Maharashtra". VTP Realty has turned large stuck projects into success stories. Cases in point are Township Codename Pegasus and Township Codename Blue Waters in East and West Pune.

We also benefit from the 38-year-long legacy of our group in the construction industry. We source 70% of our construction materials from our group companies through backward integration, enabling us to deliver better quality homes in a shorter time span.

VTP Materials, a leading cement supplier in West India holds #1 position in Pune and #2 in Maharashtra. Viraj Projects, also under the flagship of VTP Group, is one of the renowned infrastructure development and construction contracting companies boasting of almost every national developer as their customer. We have successfully established strong leadership in every industry we operate in.



# 3-TIER VTP PHILOSOPHY

With thousands of satisfied customers, there's no denying that VTP Realty is a buyer's brand. We remain committed to a customer-centric approach, guided by our holistic, all-encompassing three-tier philosophy: Better Design, Better Build, Better Care.



### Better Design

Layouts that maximize the potential of each room offering more usable space inside a home, upgraded premium specifications, amenities for every family member and better value for money.



### Better Build

VTP Group has over 38 years of experience in construction material sourcing · Constructed close to 100 projects across the country · Backward integration that allows easy access to the best construction materials · A pioneer to have used latest technology in India.



### Better Care

No transfer fee · Community Building programs after possession professionally-managed team facilitating leasing and resale of property · V-Care Customer Portal for single window communication with customers.

This philosophy has remained constant in every VTP Realty project. It's a winning formula, which has won the brand the Developer of the Year award from no less than seven awards juries, along with additional accolades, like Integrated Township of the Year, Residential Project of the Year, and Iconic Project of the Year, among others. Better Design, Better Build, Better care is what makes VTP Realty projects better, period.



# VTP REALTY'S BRAND PROMISE



## THE MLA ADVANTAGE

Intelligent plan with zero wastage. Maximum usable spaces.  
Bigger room dimensions in same carpet area.



## HIGH BUILD QUALITY

Uncompromising approach towards quality and durability.  
Multi-level quality audits both on internal and 3rd party teams.



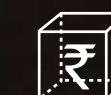
## RIGHT PRICED PRODUCTS

Value creation at every price point. Our products justify  
the price they command.



## CUSTOMER-CENTRIC APPROACH

Customers are central to our product design and service processes.  
We aim for customer delight in every aspect.



## TRANSPARENT TRANSACTION

Fixed and fair price policy. Same price for all channels.  
No hidden costs.



## POST-SALES & POST-POSSESSION SUPPORT

Handholding customers till they move in  
and even beyond.



## HIGHER RETURN ON INVESTMENTS & BETTER RENTALS

Strategic locations, futuristic features and  
specifications and thoughtful amenities ensure greater ROI.

# STELLAR DELIVERY ACROSS PUNE.



**VTP PURVANCHAL - PH 1**  
1, 2 & 3 bed residences – Wagholi



**URBAN SPACE**  
3.5 & 4.5 bed residences – NIBM



**VTP ALPINE**  
2, 3 & 4 bed residences - Mahalunge

## RESIDENTIAL

VTP ALPINE - 2, 3 & 4 bed residences - Mahalunge  
VTP SOLITAIRE - PH 1 - 2 & 3 bed residences – Baner  
VTP PURVANCHAL - PH 1 - 1, 2 & 3 bed residences – Wagholi  
VTP CELESTA - 3 bed residences - NIBM  
URBAN SPACE - 3.5 & 4.5 bed residences – NIBM  
URBAN BALANCE – 3 bed residences – Magarpatta Road  
VTP URBAN RISE - 1.5 & 2 bed residences – Pisoli  
VTP URBAN SOUL - 2 bed residences - Kharadi  
VTP URBAN NIRVANA - 2 & 3 bed residences - Kharadi  
VTP LANDMARK - 1 & 2 bed residences - Undri  
VTP ONE - 1 bed residences - Kharadi

## COMMERCIAL

KP SQUARE - Chinchwad  
TRADE PARK - Showrooms - Offices & Restaurants – Undri  
THE MARKETPLACE - Retail & offices, Undri  
VTP HOUSE - Viman Nagar  
LANDMARK - Undri  
Hotel Cypress - A Luxury Hotel in Kalyani Nagar

## SCHOOLS

VIBGYOR ROOTS & RISE SCHOOL – Chinchwad  
VIBGYOR ROOTS & RISE SCHOOL – Wagholi  
EDEN INTERNATIONAL SCHOOL – Talegaon



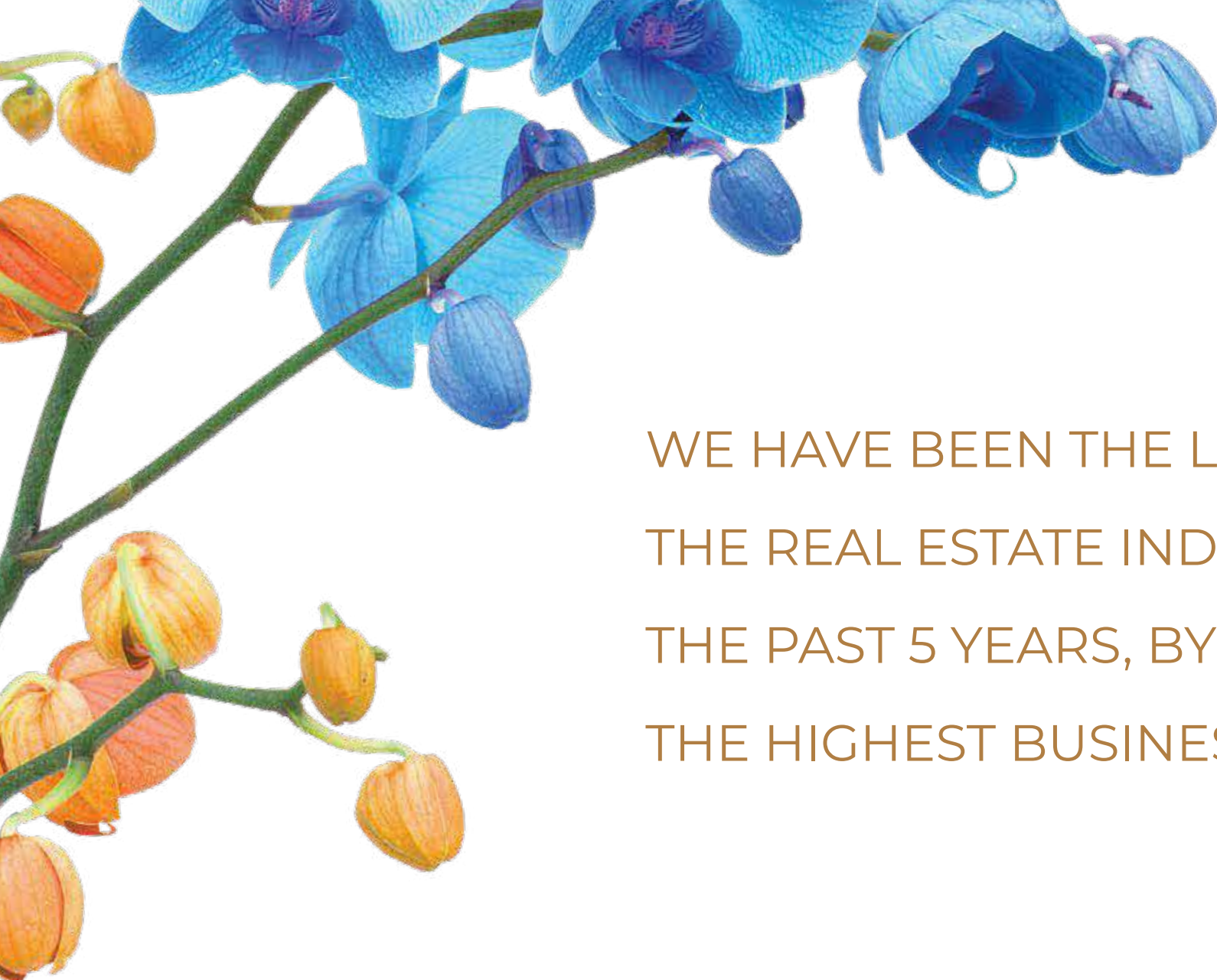
**VTP URBAN NEST**  
1.5, 2 & 3 bed residences – Undri



**VTP SOLITAIRE - PH 1**  
2 & 3 bed residences – Baner



**VIBGYOR ROOTS & RISE SCHOOL**  
Wagholi



WE HAVE BEEN THE LEADERS OF  
THE REAL ESTATE INDUSTRY FOR  
THE PAST 5 YEARS, BY ACHIEVING  
THE HIGHEST BUSINESS FIGURES..

**WE ARE COMMITTED TO ESTABLISHING**

STARTING THIS FINANCIAL YEAR,  
WE HAVE BEGUN SETTING THE HIGHEST EVER  
BENCHMARKS IN PROJECT DELIVERY TOO!

**OUR LEADERSHIP ON ALL BUSINESS FRONTS.**

#TrueLeadersOfRealEstate



# IT'S GREAT TO BE RECOGNIZED BY THE MOST RECOGNIZED



**ASIA PACIFIC PROPERTY AWARDS ARCHITECTURE**  
in association with  
**GROHE**

**AWARD WINNER**  
MIXED-USE DEVELOPMENT  
VTP Aethereus by VTP Realty  
**2020-2021**

**ASIA PACIFIC PROPERTY AWARDS ARCHITECTURE**  
in association with  
**GROHE**

**AWARD WINNER**  
RESIDENTIAL DEVELOPMENT  
VTP Bel Air by VTP Realty  
**2020-2021**

**ASIA PACIFIC PROPERTY AWARDS ARCHITECTURE**  
in association with  
**GROHE**

**AWARD WINNER**  
RESIDENTIAL HIGH-RISE DEVELOPMENT  
VTP Beaumonde by VTP Realty  
**2020-2021**

**ASIA PACIFIC PROPERTY AWARDS ARCHITECTURE**  
in association with  
**GROHE**

**AWARD WINNER**  
COMMERCIAL HIGH-RISE DEVELOPMENT  
Altitude by VTP Realty  
**2020-2021**

## NO.1 BRAND ALWAYS RECOGNIZED BY LEADERS

**DEVELOPER OF THE YEAR**

CNBC TV18 - Incredible Brands Of India - 2022  
The Economic Times Real Estate Awards - 2022  
13th Realty+ Excellence Awards - 2022  
Maharashtra State Best Employer Brand Awards - 2022  
ET NOW - Stellar Record Awards - 2022  
Times Realty Icons - 2022  
Asia's Best Employer Brand, Singapore - 2022

**CEO OF THE YEAR MR. SACHIN BHANDARI**

CNBC TV18 - Incredible Brands Of India - 2022  
The Economic Times Real Estate Awards - 2022  
13th Realty+ Excellence Awards - 2022  
ET NOW National Feather - Awards - 2022  
ET NOW - Stellar Record Awards - 2022  
Times Realty Icons - 2022  
Asia's Best Employer Brand, Singapore - 2022

## INNOVATIVE LEADERSHIP BUILD STRONG FOUNDATION

**YOUNG ASIAN ENTREPRENEURS MR. BHUSHAN & MR. NILESH PALRESHA**

40 Under 40 Realty Plus Awards 2021  
Asia One - 2020

**BUSINESS LEADER OF THE YEAR MR. SACHIN BHANDARI**

ET NOW Real Estate Awards - 2020

## EARNED THE MONIKER "TURNAROUND" SPECIALISTS OF THE INDUSTRY

**INTEGRATED TOWNSHIP OF THE YEAR BLUE WATERS**

Realty Plus Excellence Awards - 2021  
Economic Times - Leadership Awards - 2021

**DEVELOPER OF THE YEAR TOWNSHIP**

Realty Plus Excellence Awards - 2021

**INTEGRATED TOWNSHIP OF THE YEAR PEGASUS**

Realty Plus Excellence Awards - 2022  
Zee Business Excellence Awards - 2021

**RESIDENTIAL PROJECT OF THE YEAR - VTP BELLISSIMO**

14th Realty+ Excellence Awards - 2022

**RESIDENTIAL PROJECT OF THE YEAR - VTP LEONARA**

Realty Plus Excellence Awards - 2021

**ICONIC PROJECT OF THE YEAR - VTP BEL AIR**

Realty Plus Excellence Awards - 2021

Select awards of the recent years for more visit [www.vtprealty.in/awards](http://www.vtprealty.in/awards)



Earth 1 by VTP Luxe:  
 WHERE YOU REJUVENATE  
 YOUR SPIRIT BEFORE  
 YOUR NEXT ADVENTURE

Representative Image

[www.vtprealty.in](http://www.vtprealty.in)

Site Location : Inside Township Codename Blue Waters, Mahalunge-Nande Road, Mahalunge, Pune 410 501.

MahaRERA Registration No. P52100048489 available at [www.maharera.mahaonline.gov.in](http://www.maharera.mahaonline.gov.in)

SCAN QR FOR  
 SITE LOCATION



This material is solely for informative purpose only. The plans, layouts, specifications, renders, imagery and all other details herein are indicative and the developer/owner reserves the rights to change any or all of these in the interest of the development. Certain fittings/options may be available in limited units only or available at additional price and are not part of the standard unit. All brands mentioned herein are subject to change with equivalent or better brand(s) at the sole discretion the project architect / management. The dimensions and/or areas stated in the plans are measured on the basis of unfinished surface using polyline method and do not reflect the reduction in dimensions on account of the finishes being installed. Further, variance of +/- 3% in the unit carpet area and/or unfinished dimensions is possible due to design and construction variances. The plans contained herein are typical unit/floor plans & the purchaser must verify the exact plan and orientation of their unit before purchase. This collateral does not constitute an offer and/or contract of any type between the developer/promoter/owner and the recipient, all intending purchaser/s in this project shall be governed by the terms and conditions envisaged under the Real Estate Regulation and Development Act 2016. The copyrights of this content are owned by VTP REALTY and no part of this content can be used or extracted without prior written consent of the brand.



PHASE 1  
 P52100048489



PHASE 2  
 P52100051025



PHASE 3  
 P52100052414



VTP LUXE IS A LUXURY PRODUCT LINE BY VTP REALTY