



Site Plan



Unit Plan

Super Area: 1005 sq.ft. (93.37 sq.mt.)
 Carpet Area: 562.85 sq.ft. (52.29 sq.mt.)
 Balcony Area: 153.06 sq.ft. (14.22 sq.mt.)
 Builtup Area: 767.9 sq.ft. (71.34 sq.mt.)



Garden Homes Area

Unit Plan

3 BHK
 Super Area: 1590 sq. ft. (147.71 sq.mt.)
 Carpet Area: 952.83 sq.ft. (88.52 sq.mt.)
 Balcony Area: 173.84 sq.ft. (16.15 sq.mt.)
 Builtup Area: 1255.19 sq.ft. (116.61 sq.mt.)



3 BHK
 Super Area: 1596 sq. ft. (148.27 sq.mt.)
 Carpet Area: 922.04 sq.ft. (85.66 sq.mt.)
 Balcony Area: 211.94 sq.ft. (19.69 sq.mt.)
 Builtup Area: 1251.96 sq.ft. (116.31 sq.mt.)

Unit Plan

3 BHK

Super Area: 1725 sq. ft. (160.26 sq.mt.)
 Carpet Area: 1038.08 sq.ft. (96.44 sq.mt.)
 Balcony Area: 201.93 sq.ft. (18.76 sq.mt.)
 Builtup Area: 1352.50 sq.ft. (125.65 sq.mt.)



Unit Plan

4 BHK

Super Area: 2364 sq. ft. (219.62 sq.mt.)
 Carpet Area: 1422.03 sq.ft. (132.11 sq.mt.)
 Balcony Area: 291.92 sq.ft. (27.12 sq.mt.)
 Builtup Area: 1829.02 sq.ft. (169.92 sq.mt.)



Unit Plan



2 BHK + 2 TOILET

Super Area: 1100 sq. ft. (102.19 sq.mt.)
 Carpet Area: 647.35 sq.ft. (60.14 sq.mt.)
 Balcony Area: 157.58 sq.ft. (14.64 sq.mt.)
 Builtup Area: 872.85 sq.ft. (81.09 sq.mt.)



3 BHK + 2 TOILET

Super Area: 1175 sq. ft. (109.16 sq.mt.)
 Carpet Area: 724.2 sq.ft. (67.28 sq.mt.)
 Balcony Area: 139.82 sq.ft. (12.99 sq.mt.)
 Builtup Area: 938.51 sq.ft. (87.19 sq.mt.)

3 BHK + 2 TOILET + DRESS

Super Area: 1464 sq. ft. (136.01 sq.mt.)
 Carpet Area: 879.2 sq.ft. (81.68 sq.mt.)
 Balcony Area: 166.41 sq.ft. (15.46 sq.mt.)
 Builtup Area: 1125.48 sq.ft. (104.56 sq.mt.)



Unit Plan



3 BHK + 3 TOILET + DRAWING/DINING
 Super Area: 1660 sq. ft. (154.22 sq.mt.)
 Carpet Area: 1009.77 sq.ft. (93.81 sq.mt.)
 Balcony Area: 217.86 sq.ft. (20.24 sq.mt.)
 Builtup Area: 1307.18 sq.ft. (121.44 sq.mt.)



Site Plan



LEGEND :

- (125 SQ.YARD) 2 BED ROW
- (154 SQ.YARD) 2 BED + STUDY ROW
- (180 SQ.YARD) 3 BED ROW
- COMMERCIAL CUM STUDIO
- 3 BED + 2 TOL. (965 SQ.FT)
- G1 = 02,03,10,11
- G2 = 04,05,06,07,08,09
- G3 = 01,02,03,10,11,12
- G4 = 04,05,08,09
- G7&7B = 01 to 10

COMMERCIAL AND FACILITIES:

- 1 BED + 2 TOL. (1285 SQ.FT) = A3, A9, A10 (1,4,5,6)
- 3 BED + 2 TOL. (1250 SQ.FT) = A5, A6, A10 (2,3,7)
- 3 BED + 2 TOL. (1505 SQ.FT) = D1, D7, D12A, D14, D16
- 3 BED + 3 TOL. (1780 SQ.FT) = E2, E3
- 3 BED + 2 TOL. (1280 SQ.FT) = C3 (1,6)
- 3 BED + 2 TOL. (1459 SQ.FT) = D2 (2,8)
- 3 BED + 3 TOL. (1630 SQ.FT) = C2 (3,4)

3 BED + 2 TOL. (1175 SQ.FT) = 01 (01,12,8,10,07)

2 BED + 2 TOL. (995 SQ.FT) = A1, A2

2 BED + 2 TOL. (1105 SQ.FT) = C1

3 BED + 2 TOL. (1000 SQ.FT) = D1

3 BED + 4 TOL. + SER. (1965 SQ.FT) = D1 (2)

3 BED + 2 TOL. (1275 SQ.FT) = B2

2 BED + 2 TOL. (930 SQ.FT) = B24, B25

NURSERY SCHOOL

Unit Plan



2 BHK - Type 1	Size	Super Area	Carpet Area	Balcony Area	Builtup Area
Unit No. 1, 2, 3, 4, 6, 7 & 8	Sq.ft. Size	1065	596.3	148	808.8
Floor : 3rd, 5th, 7th, 9th, 11th, 13th, 15th, 17th, 19th, 21st, 23rd, 25th & 27th	Sq.mt. Size	98.94	55.4	13.8	75.14



2 BHK - Type 2	Size	Super Area	Carpet Area	Balcony Area	Builtup Area
Unit No. 1, 2, 3, 4, 6, 7 & 8	Sq.ft. Size	1095	596.3	166	827.8
Floor : 4th, 8th, 12th, 16th, 20th & 24th	Sq.mt. Size	101.73	55.4	15.42	76.9

Unit Plan



2 BHK - Type 3	Size	Super Area	Carpet Area	Balcony Area	Builtup Area
Unit No. 1, 2, 3, 4, 6, 7 & 8	Sq.ft. Size	1095	596.3	166	827.8
Floor : 6th, 10th, 14th, 18th, 22nd & 26th	Sq.mt. Size	101.73	55.4	15.42	76.9



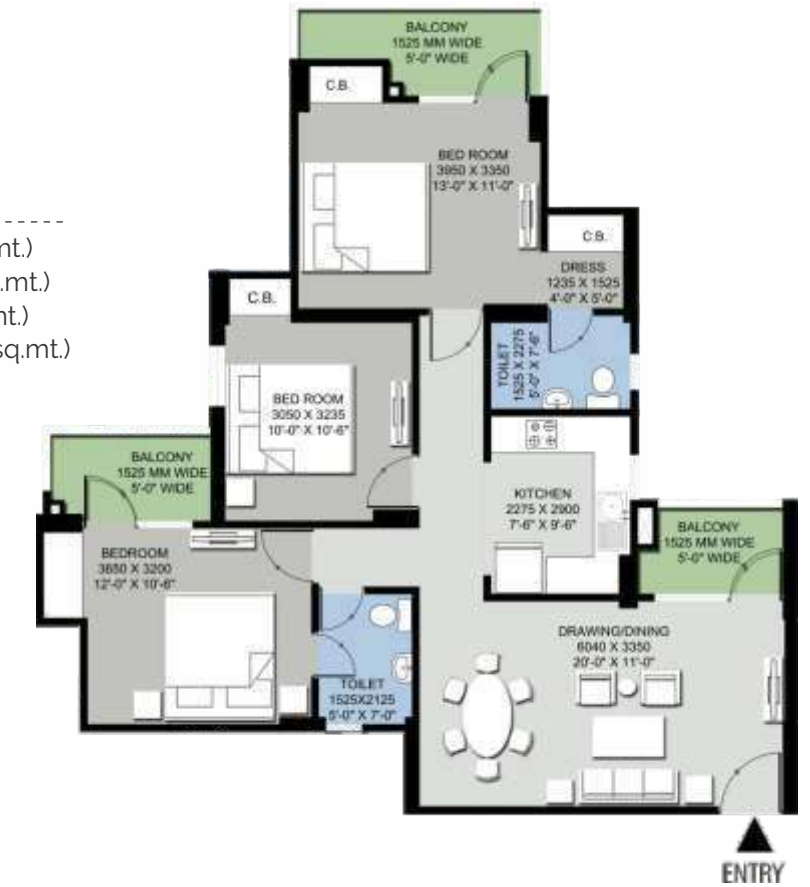
3 BHK

Super Area: 1200 sq. ft. (111.48 sq.mt.)
 Carpet Area: 763.58 sq.ft. (70.94 sq.mt.)
 Balcony Area: 101.48 sq.ft. (9.43 sq.mt.)
 Builtup Area: 926.17 sq.ft. (86.04 sq.mt.)

Unit Plan

3 BHK

Super Area: 1459 sq. ft. (135.58 sq.mt.)
 Carpet Area: 893.34 sq.ft. (82.99 sq.mt.)
 Balcony Area: 141.05 sq.ft. (13.1sq.mt.)
 Builtup Area: 1104.13 sq.ft. (102.58 sq.mt.)



3 BHK

Super Area: 1505 sq. ft. (139.82 sq.mt.)
 Carpet Area: 890.32 sq.ft. (82.71 sq.mt.)
 Balcony Area: 200.34 sq.ft. (18.61 sq.mt.)
 Builtup Area: 1162.51 sq.ft. (108 sq.mt.)

Unit Plan



3 BHK

Super Area: 1600 sq. ft. (148.64 sq.mt.)
 Carpet Area: 958.54 sq.ft. (89.05sq.mt.)
 Balcony Area: 203.85 sq.ft. (18.94 sq.mt.)
 Builtup Area: 1231.79 sq.ft. (114.44 sq.mt.)



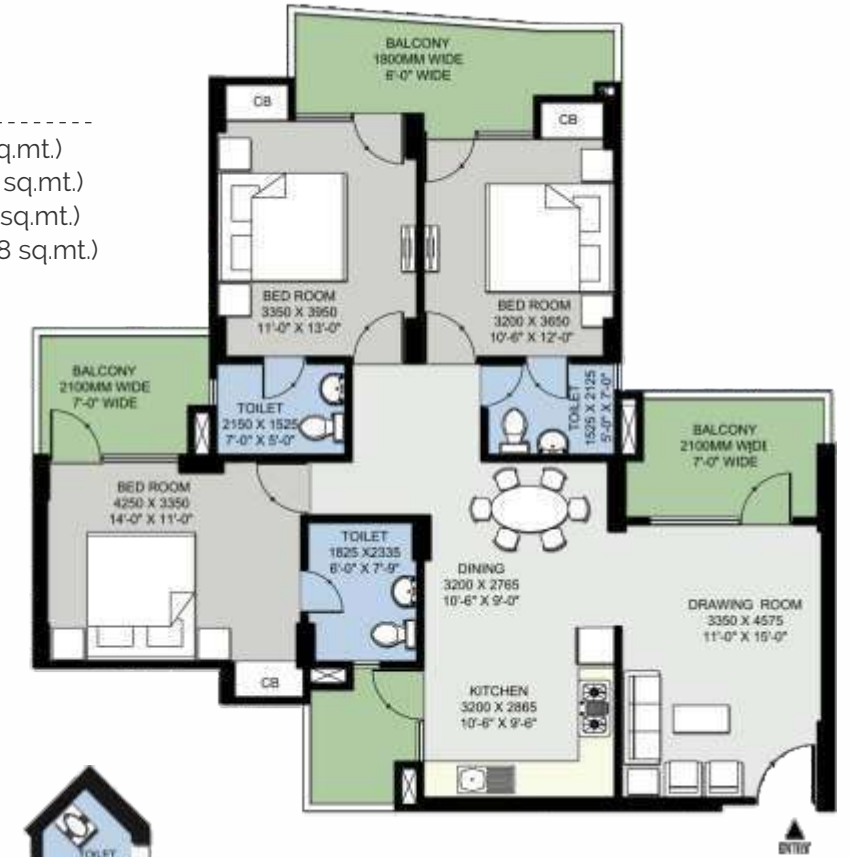
3 BHK

Super Area: 1650 sq. ft. (153.29 sq.mt.)
 Carpet Area: 1013.03 sq.ft. (94.11 sq.mt.)
 Balcony Area: 184.33 sq.ft. (17.13 sq.mt.)
 Builtup Area: 1266.42 sq.ft. (117.65 sq.mt.)

Unit Plan

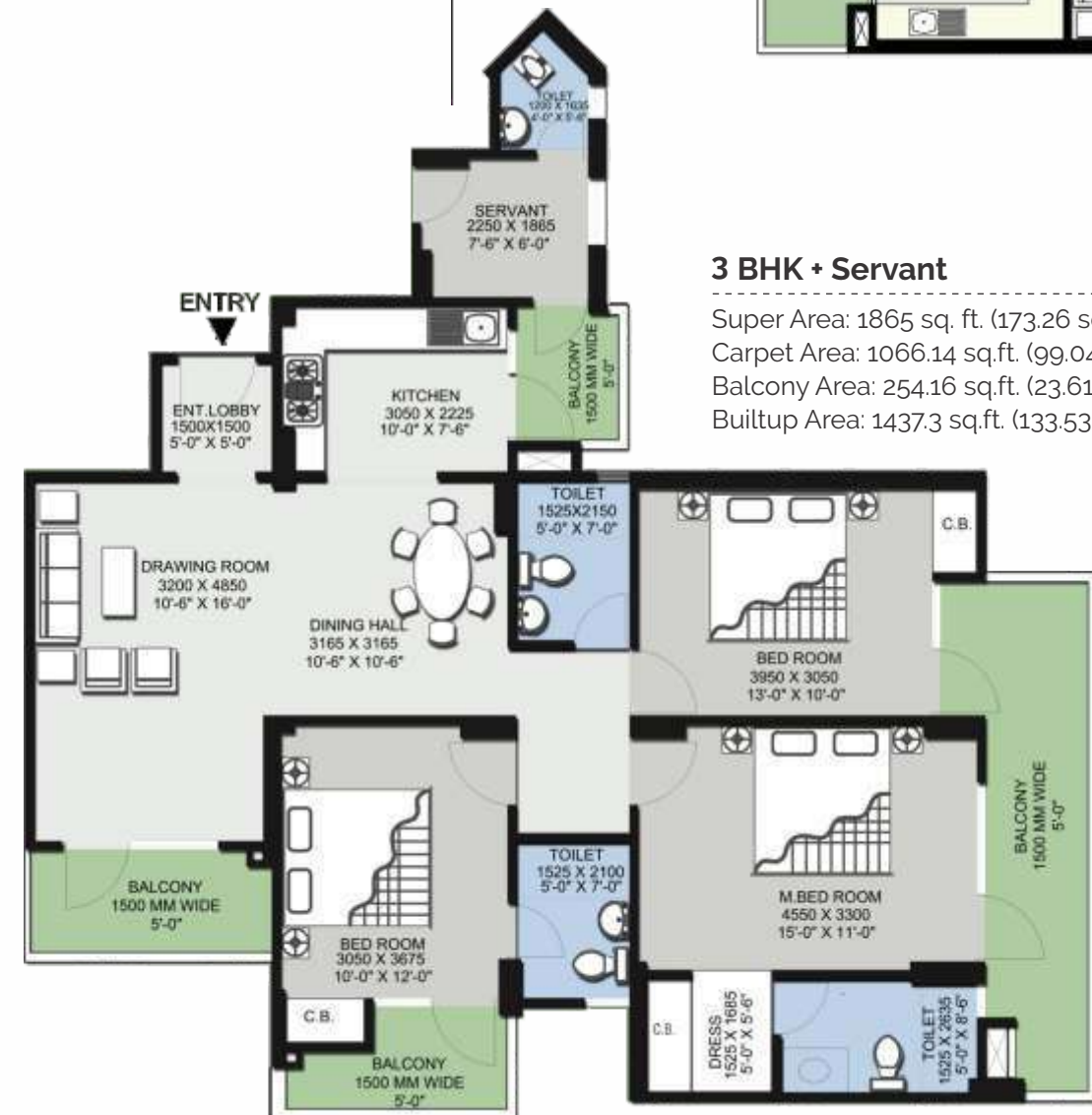
3 BHK

Super Area: 1780 sq. ft. (165.37 sq.mt.)
 Carpet Area: 1013.46 sq.ft. (94.15 sq.mt.)
 Balcony Area: 289.56 sq.ft. (29.9 sq.mt.)
 Builtup Area: 1375.39 sq.ft. (127.78 sq.mt.)



3 BHK + Servant

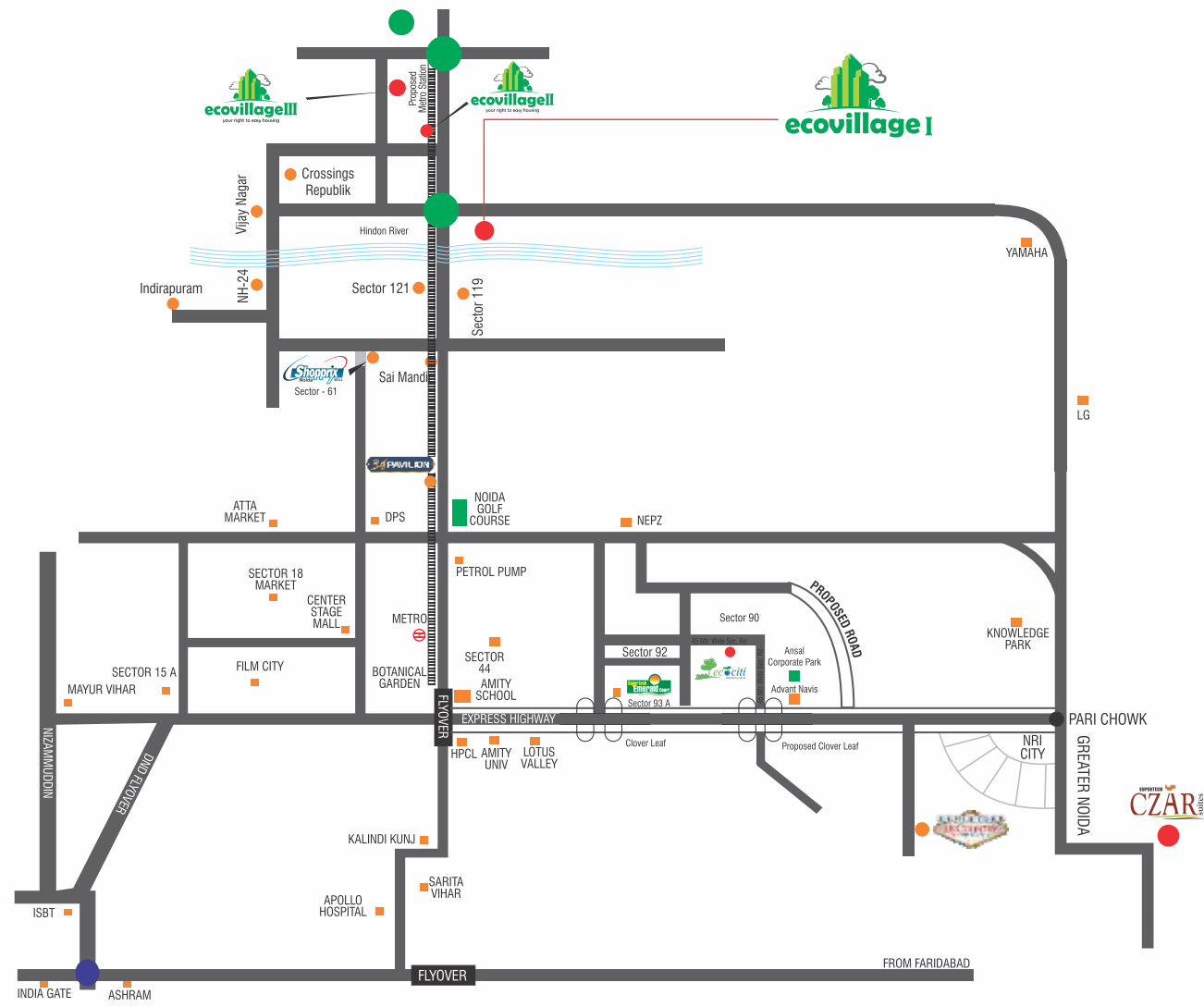
Super Area: 1865 sq. ft. (173.26 sq.mt.)
 Carpet Area: 1066.14 sq.ft. (99.04 sq.mt.)
 Balcony Area: 254.16 sq.ft. (23.61 sq.mt.)
 Builtup Area: 1437.3 sq.ft. (133.53 sq.mt.)



Specifications

LOCATION	FLOOR	EXTERNAL DOOR AND WINDOW	ELECTRICAL FITTINGS	WALLS	FITTINGS	INTERNAL DOOR	HARDWARE	ELECTRICAL	WATER SUPPLY	CEILING
LIVING ROOM	Vitrified Tiles	Powder Coated Aluminium	Sheet and Switches	Oil Bound Distemper	-	Flush Shutter with Wooden Frame	All doors and windows with metal fittings along with mortice lock on the main door	Copper wiring and PVC concealed conduit. Provision for adequate light and power points as well as Television and T.V. outlets with modular switches and protective M.C.B.'s	Underground and overhead water tanks with pumps and 24 hours water supply. Individual R.O. plant of standard make in each kitchen.	Oil Bound Distemper
DINING	Vitrified Tiles	Powder Coated Aluminium	Sheet and Switches	Oil Bound Distemper	-	Flush Shutter with Wooden Frame				Oil Bound Distemper
BEDROOM	Vitrified Tiles	Powder Coated Aluminium	Sheet and Switches	Oil Bound Distemper	-	Flush Shutter with Wooden Frame				Oil Bound Distemper
MASTER BEDROOM	Vitrified Tiles	Powder Coated Aluminium	Sheet and Switches	Oil Bound Distemper	-	Flush Shutter with Wooden Frame				Oil Bound Distemper
DRESSING ROOM	Vitrified Tiles	Powder Coated Aluminium	Sheet and Switches	Oil Bound Distemper	-	Flush Shutter with Wooden Frame				Oil Bound Distemper
SERVANT ROOM	Ceramic Tiles	Powder Coated Aluminium	Sheet and Switches	Oil Bound Distemper	-	Flush Shutter with Wooden Frame				Oil Bound Distemper
KITCHEN	Vitrified Tiles	Powder Coated Aluminium	Sheet and Switches	Ceramic Tiles of 2' height from the platform	Stainless Steel Sink with C.P. Fittings	Open				Oil Bound Distemper
TOILET	Ceramic Tiles	-	Sheet and Switches	Ceramic Tiles of 7' height	Washbasin WC & C.P. Fittings	Flush Shutter				False Ceiling
BALCONIES	Ceramic Tiles	-	Sheet and Switches	Oil Bound Distemper	-	-				Permanent Paint Finish
LIFT	P.V.C. Flooring	-	Sheet and Switches	-	-	-				-
LOBBIES/CORRIDOR	Kota Stone / Vitrified Tiles	-	-	Oil Bound Distemper	-	-				-
EXTERIOR FINISH	-	-	-	Texture Paint	-	Flush Shutter with Wooden Frame				-

Location Map



Map not to scale

Distance Legends

- Sector 71 Red Light - 6 kms
- Noida City Centre Metro Station - 9 kms
- Sai Mandir - 8.5 kms
- Indrapuram - 6.5 kms
- Crossings Republik - 4 kms