



KUMAR LIFESPACES

PARV





Creating a new legacy...



KUMAR LIFESPACES

PRESENT FOR YOUR FUTURE

- 4.5 Milion Sq.Ft completed
- 15 Million Sq.Ft in the pipeline
- 5 Million Sq.Ft nearing possession

Built under the strong foundation of Kumar Properties founded by Mr. KH Oswal, Kumar Lifespaces is a branch of the highly diversified value-driven enterprise. With over 135 completed projects, our homes are an impression of over 35,000 diverse happy families residing in them. With environment-friendly designs and fully equipped complexes, our spaces define premium lifestyles that are crafted to perfection for the comfort and convenience of our residents.

Achieving multiple milestones and being one of India's most recognized brands, we build our legacy on the grounds of providing superior quality, transparency in communication, and timely project completion. Above all, we create homes that provide complete living with a holistic approach and modern lifestyle amenities. Today our group is a symbol of trust owing to our integrity and personalised approach.

Bringing the best teams in the country together, we create meticulously crafted spaces that redefine luxury. Every project is an endeavor to create prestigious communities that reflect elegance, sophistication, and innovative design.

We don't just offer homes, we celebrate life!



*ARTIST'S IMPRESSION



KUMAR LIFESPACES

PARV

**2 & 3 BHK PREMIUM
HOMES AT MOSHI**



Welcome to a celebration of life like never before ! Bring joy to every moment, breathe the calmness and create memories in every thoughtfully created corner of Moshi's most future driven project - Kumar Lifespaces Parv.

Kumar Lifespaces Parv, looks into the future like no other project and brings to you the most premium lifestyle one can experience at the prime location of Moshi. Presenting sophisticated architecture, generously spaced homes and elite amenities, this project is surely a showstopper.

With finely detailed 2 & 3 BHK premium homes, this projects provides spaces that are built for privacy along with spaces that are designed for togetherness. Larger homes with a meticulously planned layout provides immense leisure space that brings in the influence of a premium lifestyle.

Apart from these remarkable homes, the project has created a complete indoor-outdoor lifestyle that takes you beyond your beautiful home. The comfort of the indoors with the views of the outdoors gives you an elevated experience while also giving the look building a gorgeous facelift with a futuristic look.

Situated at the prime area of Moshi, Kumar Lifespaces Parv offers proximity to the booming industrial belt of PCMC, Chakan, and Bhosari. While providing a stress free commute to work the project is also in close proximity to a number of entertainment areas, educational centres and medical centers for your daily convenience.

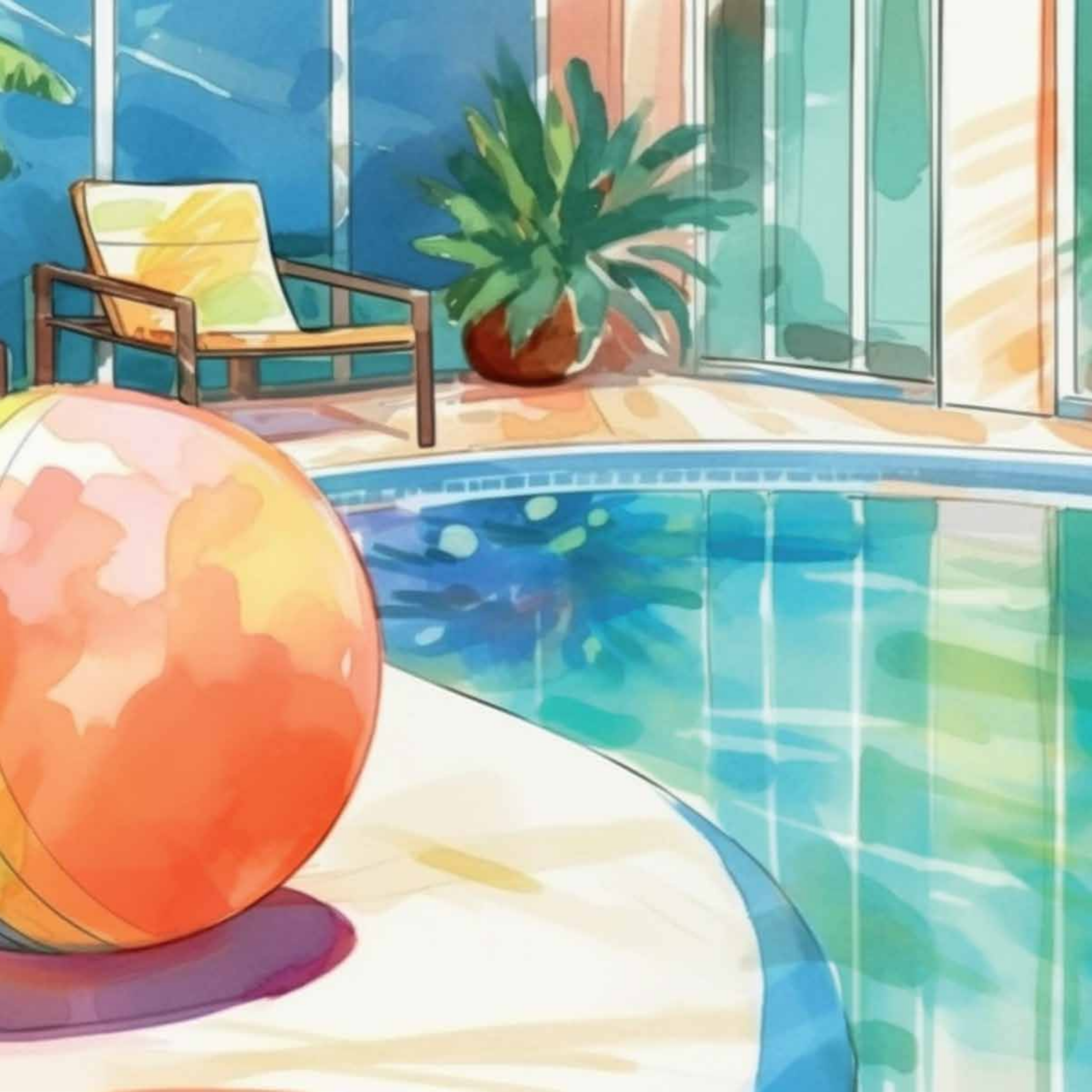


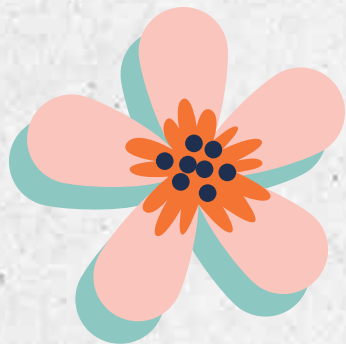
*ARTIST'S IMPRESSION



Let the celebrations begin!







amenities

Amenity Floor

- ▶ Reception & Waiting Area
- ▶ Guest Room
- ▶ Dormitory
- ▶ Living Room
- ▶ Pantry & Dinning
- ▶ Multifunctional Area
- ▶ Pet Park
- ▶ Laughter Club
- ▶ Meditation Area
- ▶ Community Garden
- ▶ Day Care
- ▶ Creche
- ▶ Kid's Play Area
- ▶ Adult Play Area
- ▶ Yoga Studio
- ▶ Zumba Studio
- ▶ Spinning Studio
- ▶ Cross Fit

Terrace Landscape Development

- ▶ Festive Court -Community Festive Celebrations
- ▶ Semicovered Seating Lounge
- ▶ Space For Barbeque Counter
- ▶ Community Farming Planter Beds - For Growing Vegetables And Herbs
- ▶ Art & Craft Workshop Zone
- ▶ Party Lawn
- ▶ Oxygen Park
- ▶ Semi-Covered Meditation Area
- ▶ Indoor Games Zone
- ▶ Pathways For Walking
- ▶ Feature Art Walls
- ▶ Yoga Deck
- ▶ Yoga & Physical Training Area

Ground Floor Landscape Development

- ▶ Swimming Pool with Kids Pool & Water Feature
- ▶ Amphitheatre Seating
- ▶ Party Lawn
- ▶ Children's Play Area
- ▶ Dropoff with Feature Wall Complimenting Building Lobby
- ▶ Multipurpose Play Court
- ▶ Seating Court
- ▶ Walkway
- ▶ Recreational Terrace Above The Clubhouse (Lounge / Barbeque Area)
- ▶ Shade Giving Trees & Tropical Plantation

Note: Kumar Parv Project consists of multiple buildings and to be developed in Phase wise manner. Amenities of this project will also develop in parts considering site constraints/situations. All the amenities shall be completed & made operational along with final completion of all building & overall development of Project.



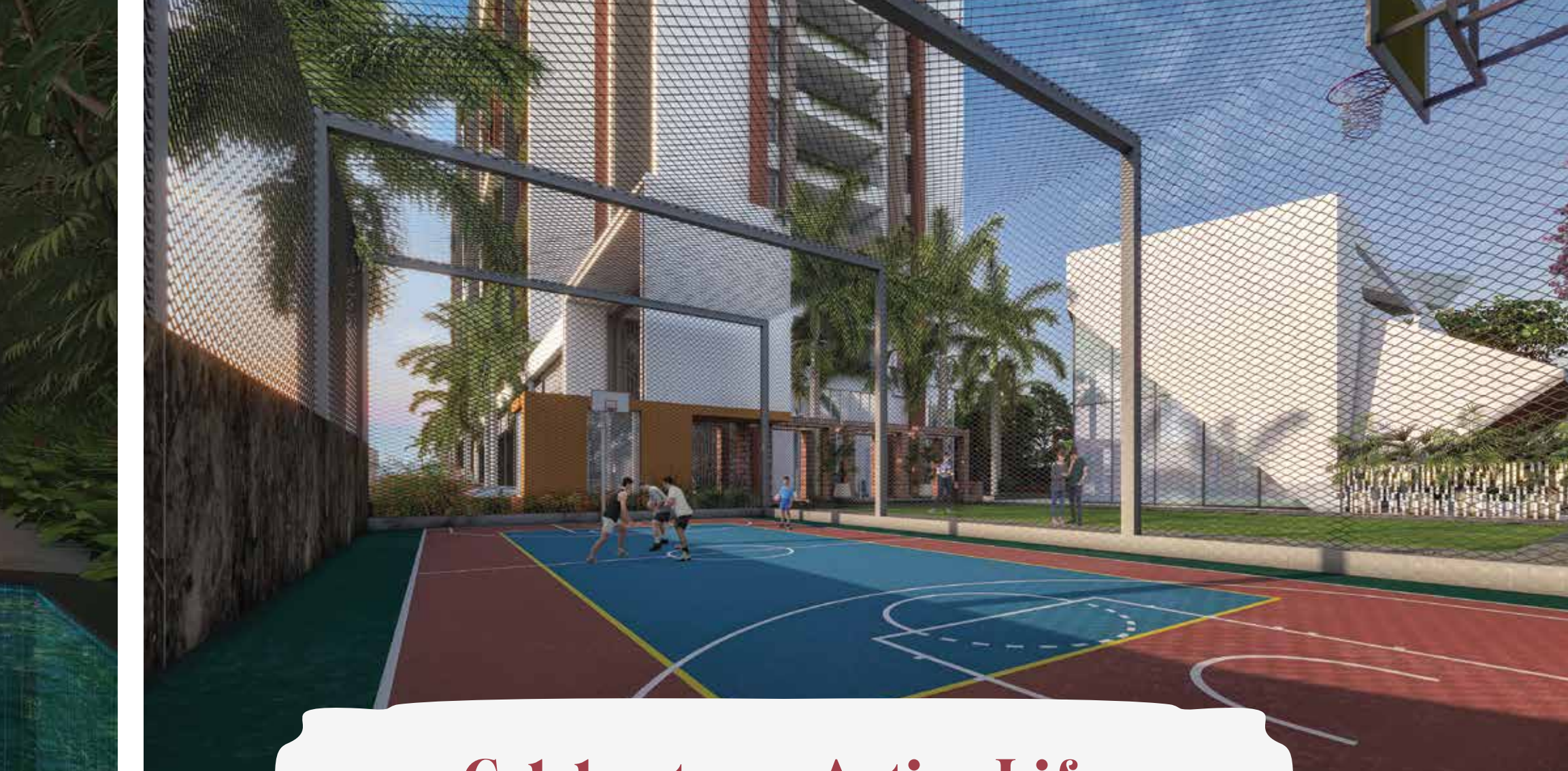
*ARTIST'S IMPRESSION



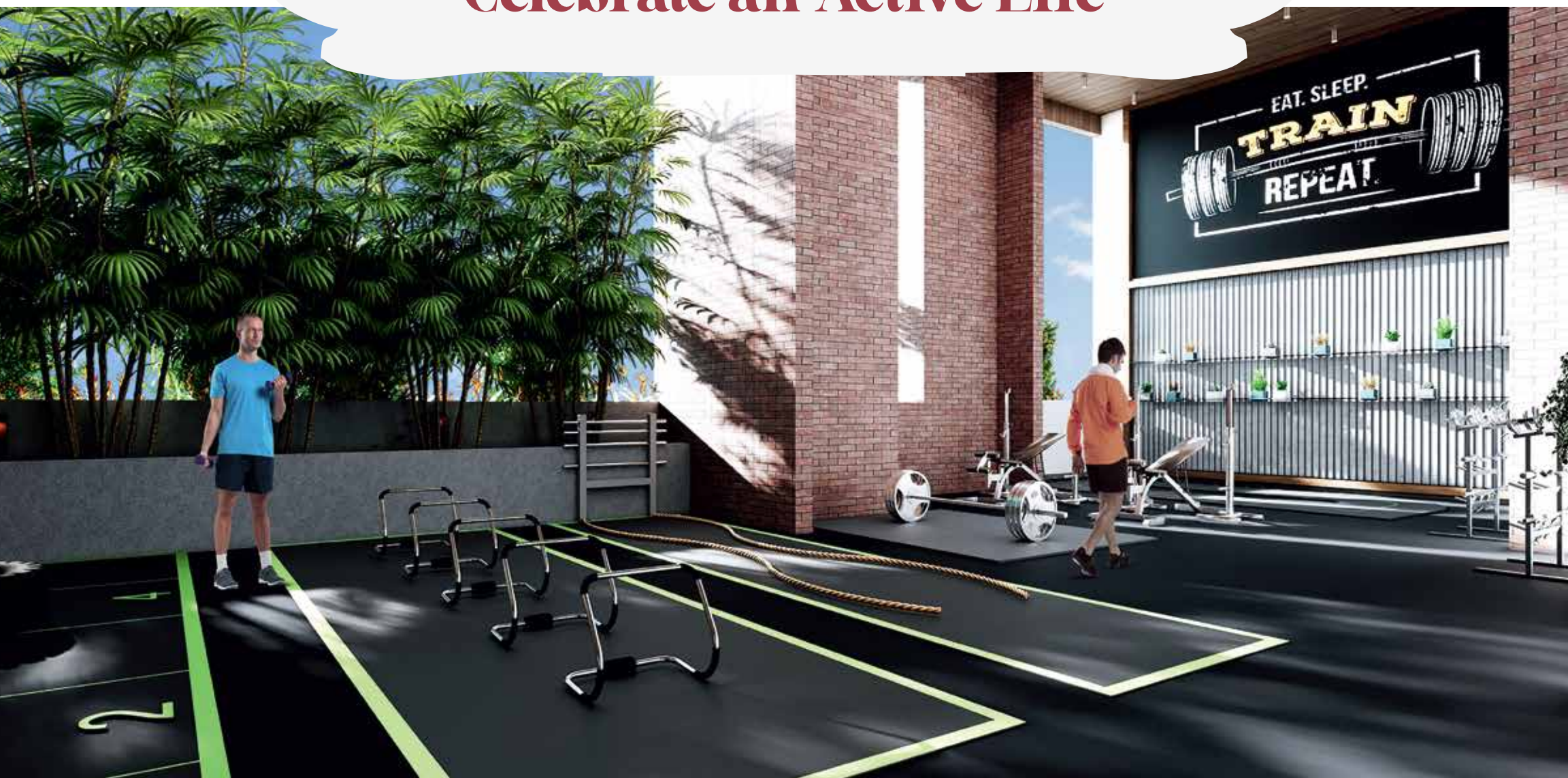
Celebrate Aquatic Bliss!



*ARTIST'S IMPRESSION



Celebrate an Active Life

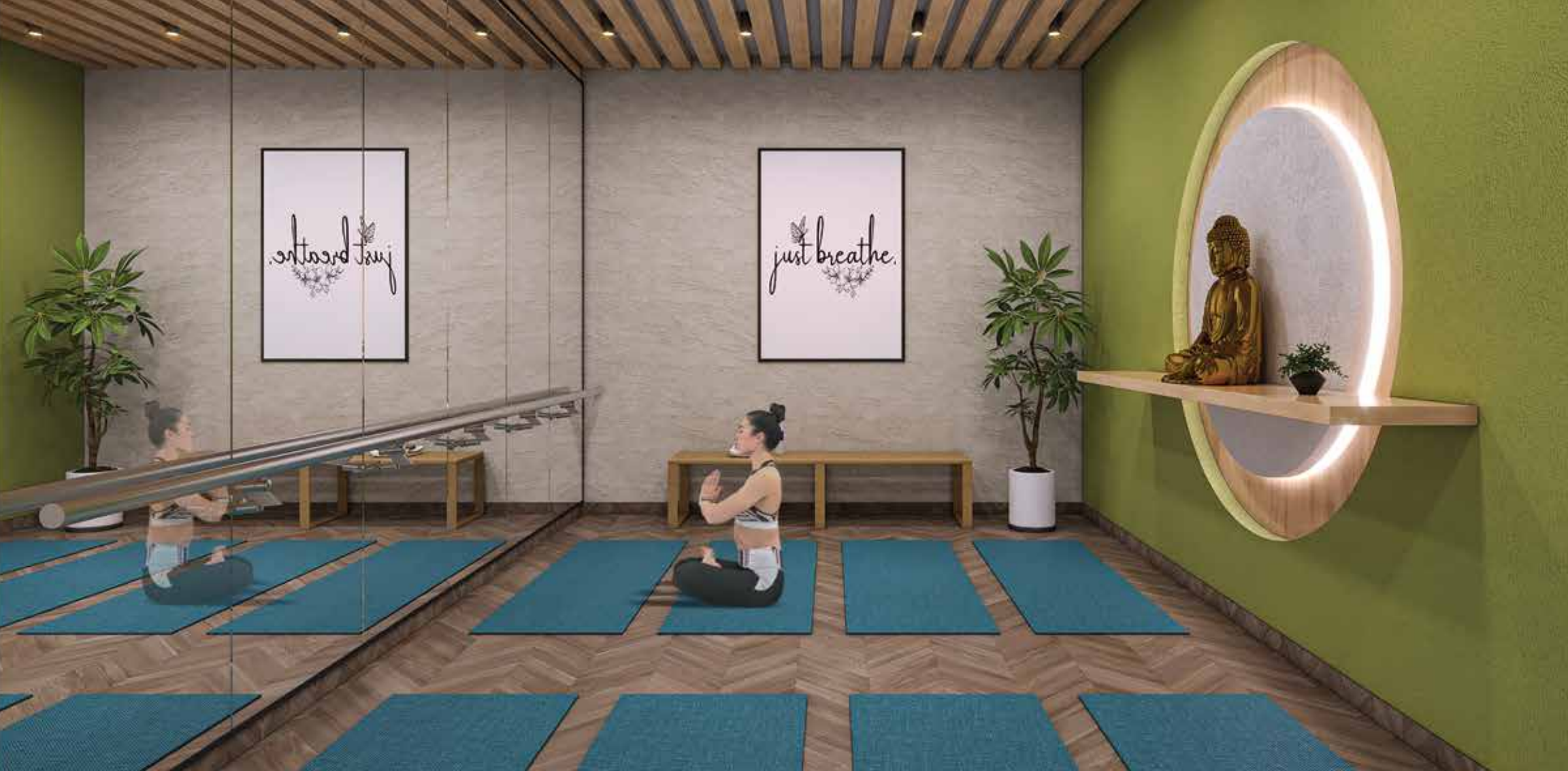




*ARTIST'S IMPRESSION



Celebrate Music



*ARTIST'S IMPRESSION



Celebrate Healthy Living





*ARTIST'S IMPRESSION



Celebrate Innocence



*ARTIST'S IMPRESSION



Celebrate Social Life





Celebrate Convenience



VINTAGE VOILET

PINK BLUSH

PINK BLUSH

BLUSH

SPORTS

SPORTS

SPORTS

SPORTS

SALE

51% OFF SALE

SALE

Mini Prices

DL4CAF4943



*ARTIST'S IMPRESSION



Celebrate the Grandeur





*ARTIST'S IMPRESSION



**Celebrate the
Grand Arrival!**



KUMAR LIFESPACES

PARV



specifications

Construction

- A-class, earthquake resistance construction

Flooring/Dado

- Vitrified tiles in all rooms & bathroom
- Anti skids tiles for balconies & bathroom floor

Wall & Ceiling

- Acrylic Emulsion on ceiling
- Wallpaper/Acrylic Emulsion on wall

Windows

- UPVC/Aluminium sliding windows
- S.S Wire rope (Invisible grill) for bedrooms & kitchen

Railings for Attached Balconies

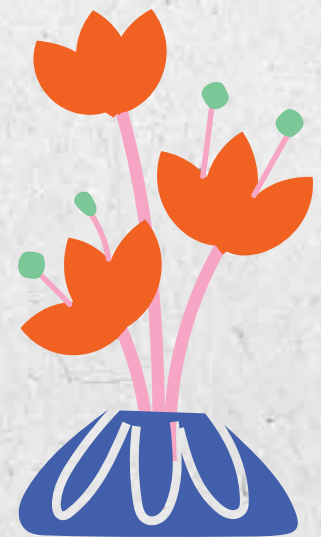
- MS or Glass Railing

Doors

- Vinyl skin pre-moulded flush door with S.S fittings for entrance door
- Video door phone and Digital lock for main door
- HDF skin moulded flush door with S.S fitting for bedrooms and toilet

Kitchen

- Artificial/vitrified stone slab for kitchen counter
- Sink-single bowl with drain Board
- Glazed tile dado up to 600 mm height





Plumbing & Bathroom & Toilets

- Concealed plumbing-Suspended drainage system
- Shower partition
- White coloured ceramic sanitary ware of reputed brand
- Single lever diverter in shower areas along with single lever basin mixer for all Bathrooms
- 4' height toilet dado with combination of texture coat & mirror
- Power plug point & Plumbing point for boilers, electrical point for exhaust fans in all toilets

Electrical

- Concealed copper wiring in the entire flat with ELCB & MCB
- Modular electrical switch & sockets
- Electric supply by way 1 phase/3 phase meter
- Automation
- Adequate points for lights fan & TV

Entrance Lobby

- Designer finish entrance lobby

Lifts

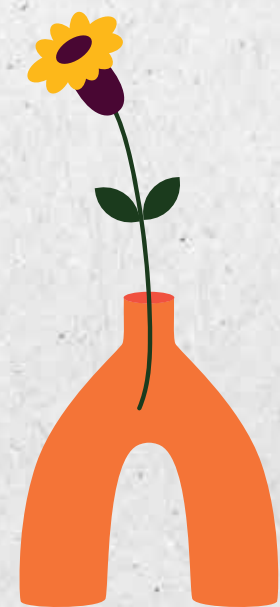
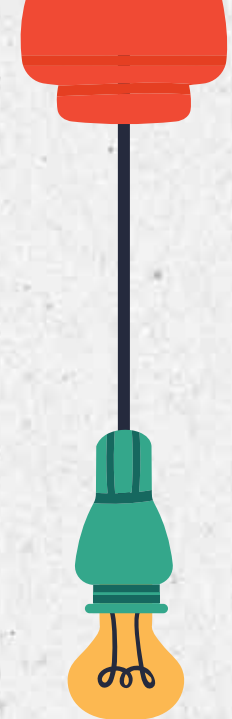
- Modern automatic lift of reputed make

External Finish

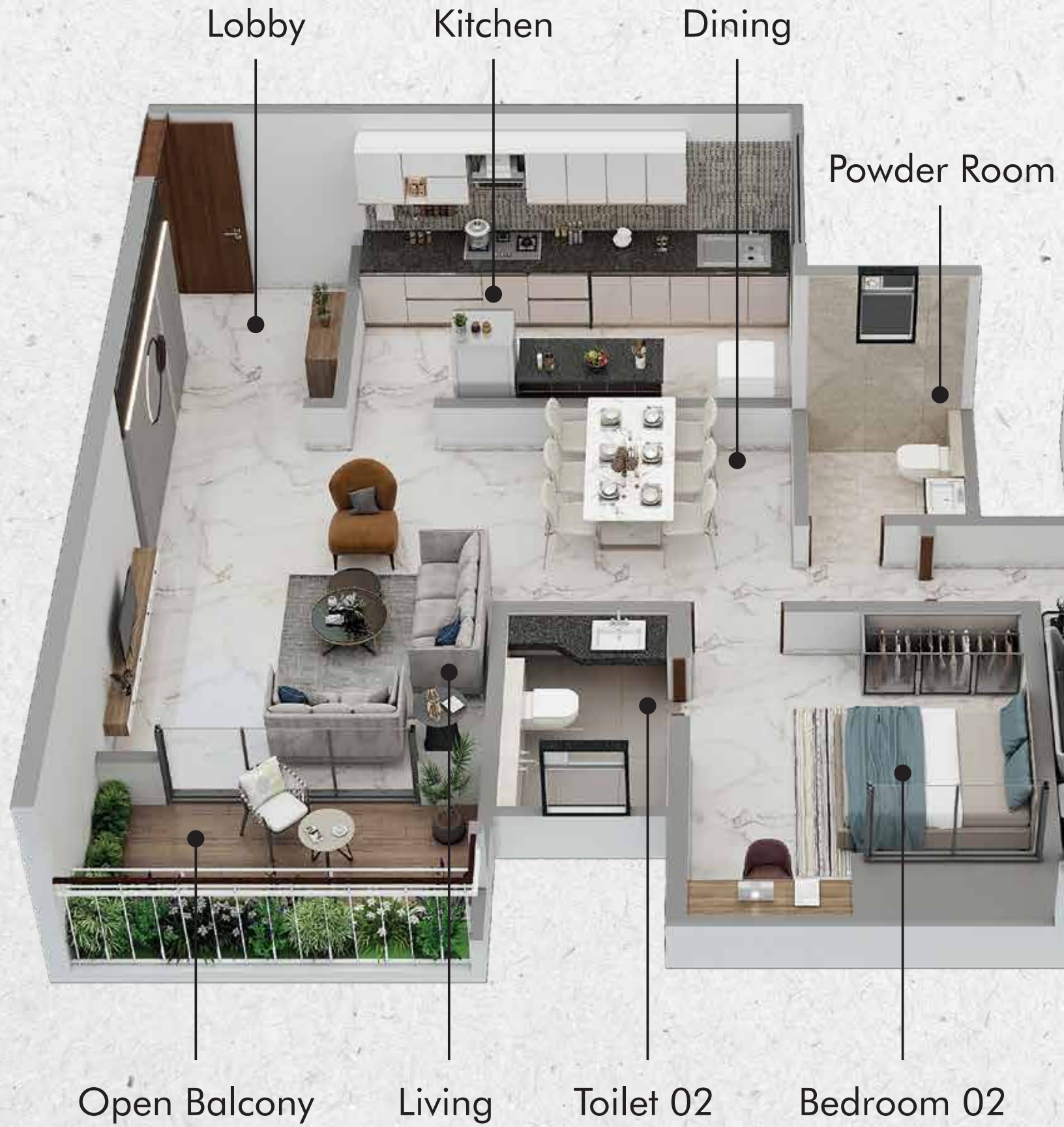
- Texture Paint

Safety

- Intercom facility/ Access control Digital
- Main entrance lobby at ground floor with CCTV camera
- Fire detection with sprinklers inside flat as per bylaws



2 BHK



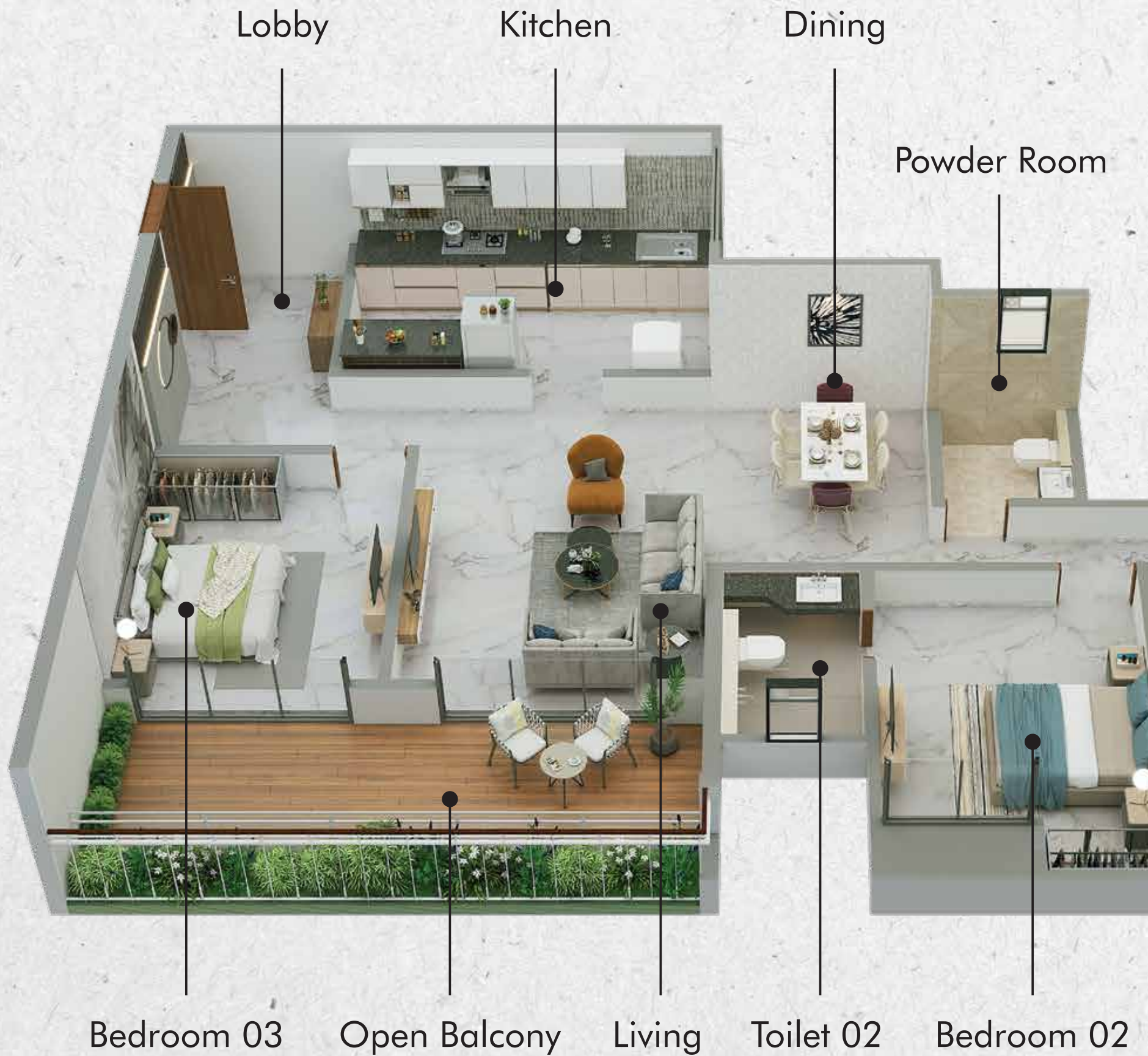
Toilet 01



Bedroom 01

Room	Dimension (m)
Living	3.500 X 4.737
Bedroom 01	3.025 X 4.250
Bedroom 02	3.175 X 3.050
Kitchen	4.600 X 2.462
Dining	3.025 X 2.775
Powder Room	1.550 X 1.550
Toilet 01	2.450 X 1.550
Toilet 02	1.550 X 2.450
Open Balcony	3.500 X 1.350

3 BHK



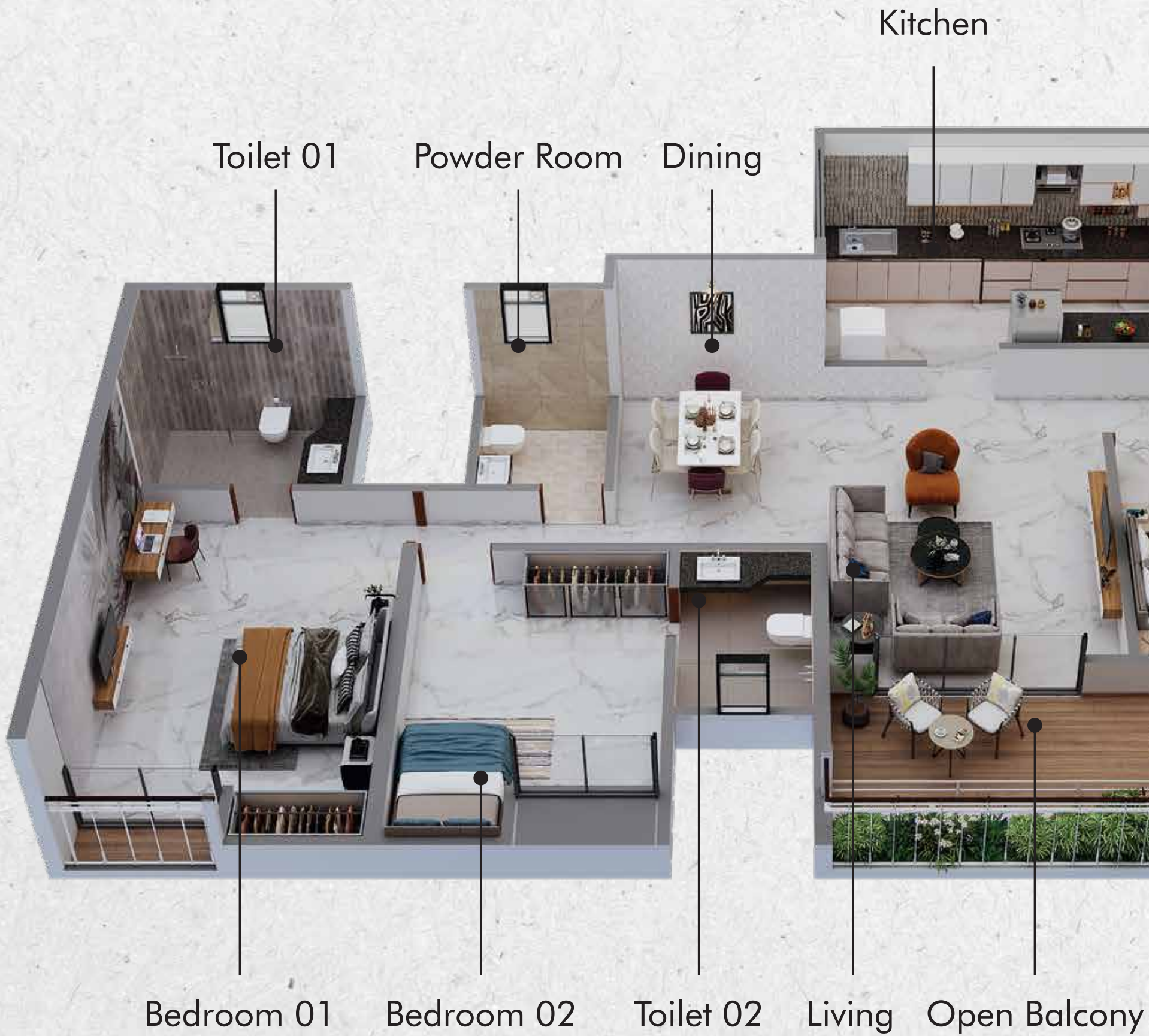
Toilet 01



Bedroom 01

Room	Dimension (m)
Living	3.475 X 5.025
Bedroom 01	3.025 X 4.700
Bedroom 02	3.038 X 3.650
Bedroom 03	3.037 X 3.650
Kitchen	4.600 X 2.450
Dining	2.660 X 3.200
Powder Room	1.550 X 1.550
Toilet 01	2.450 X 1.550
Toilet 02	1.550 X 2.450
Open Balcony	6.662 X 1.850

3 BHK





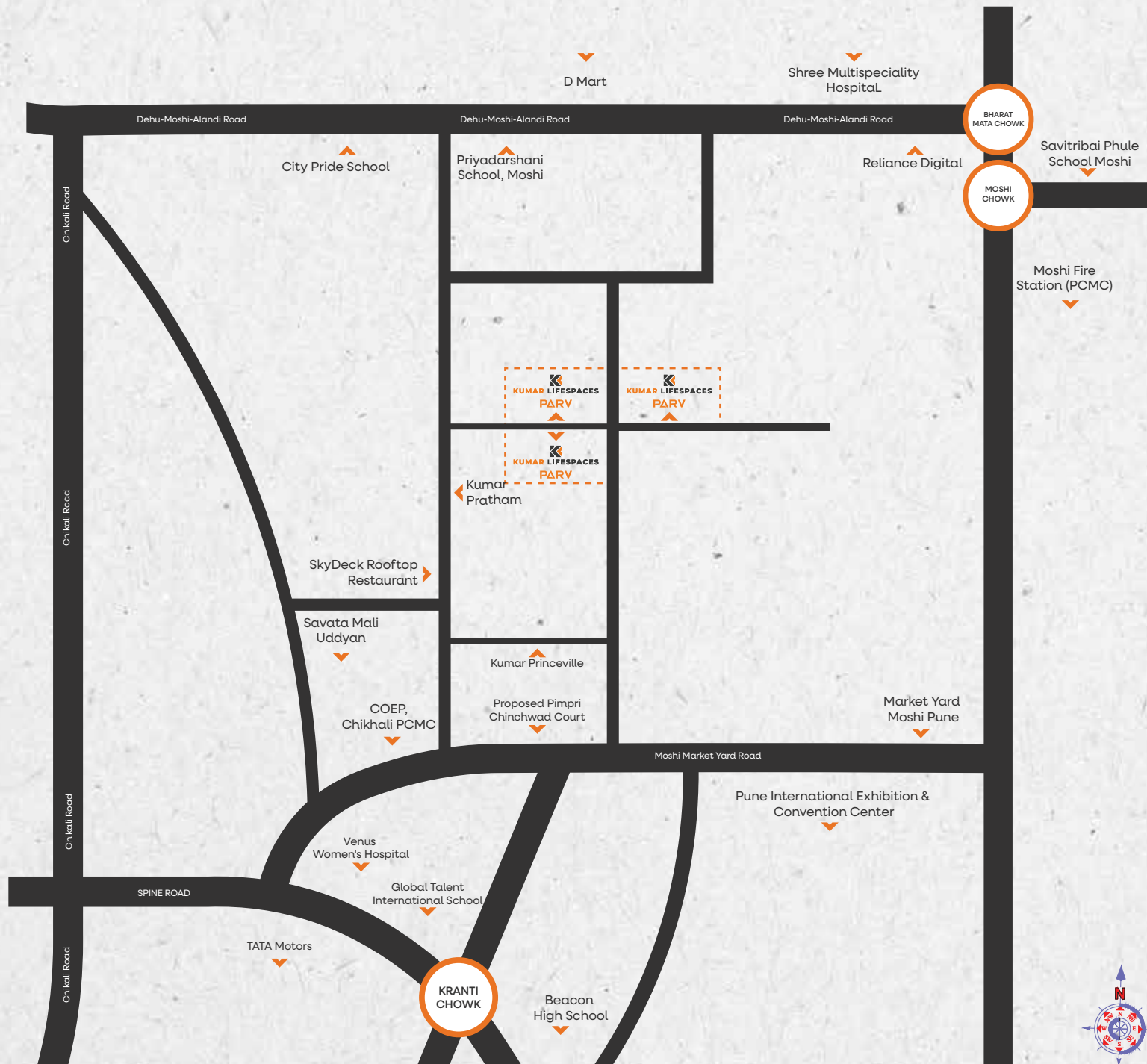
Lobby

Bedroom 03

Toilet 03

Room	Dimension (m)
Living	3.487 X 5.025
Bedroom 01	3.325 X 4.700
Bedroom 02	3.037 X 3.650
Bedroom 03	3.037 X 3.650
Kitchen	4.575 X 2.450
Dining	2.662 X 3.025
Powder Room	1.550 X 1.550
Toilet 01	2.450 X 1.550
Toilet 02	1.550 X 2.450
Toilet 03	1.550 X 2.450
Open Balcony	6.664 X 1.821



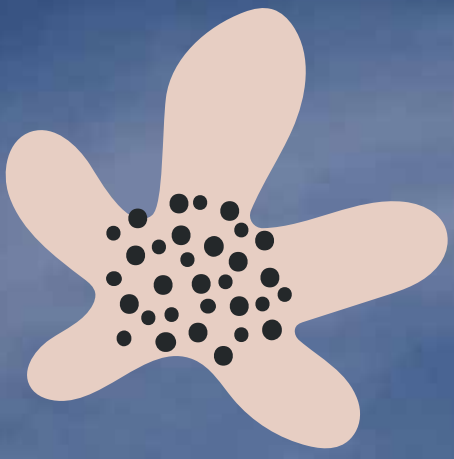


SCAN FOR LOCATION



location advantage

Pune-Nashik Highway	2km	Sant Tukaram Nagar Proposed Metro Station	7.5km
Bhosari	5km	Pimpri Chinchwad	9.5km
Chikhali	6km	Nashik Phata Proposed Metro Station	10km
Talawade IT park	6.8km	Chakan	13km
Pimpri Proposed Metro Station	6.8km	Pune Station	21km



*ARTIST'S IMPRESSION



FASHION HUB CAFE COFFEE DAY TREASHY BILLY REID

GO SPORTS DEAN BOX BLUEBERRY FASHION HUB FINANCE PINK BLOSSOM ORANGE LILAH FOREVER



credits⁺

Manoj Tatooskar & Vikas Achalkar
A&T Consultants (Principal Architects)

Sunil Mutalik
Sunil Mutalik & Associates (Structural Consultants)

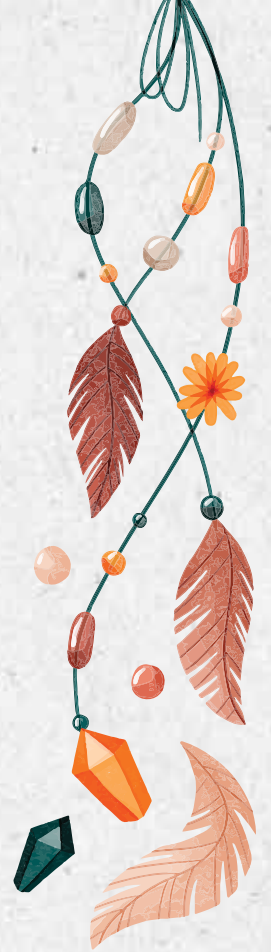
Chetan Apte
Apte Consultants (Designing Consultant)

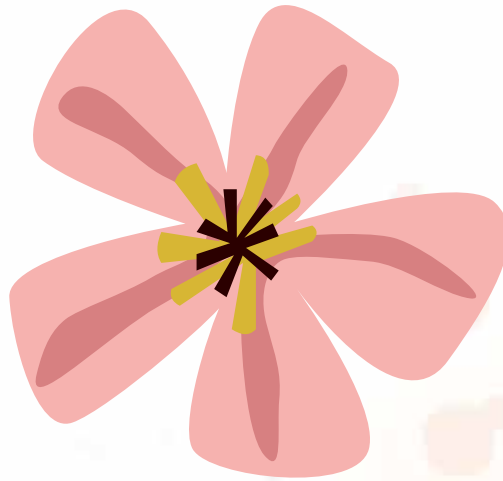
Siddharth Rajurkar
Studio 55 (Interiors)

Anuja Karhu
Unique Envicare Pvt. Ltd. (Environmental Consultant)

Girish Sardesai
Ds consultants Ltd. (Electrical Consultant)

Kumar Properties Lifespaces Pvt. Ltd.
Developer





KUMAR LIFESPACES

PARV



The Project is mortgaged in favour of Piramal Trusteeship Services Private Limited for funding by Piramal Enterprises Limited and the buyer will be required to obtain a no objection certificate prior to entering into Agreement for Sale of any unit/flat in the project.

CORPORATE OFFICE - PUNE :

Kumar Capital, 2413, East Street,
Camp, Pune 411 001
Tel : (020) 6764 1660, 3058 3650/51/52/53/54

MUMBAI :

21, Hazarimal Somani Marg,
Waudby Road, Opp. Bombay Gymkhana,
Fort, Mumbai - 400 001, India
Tel : +91-22-2209 4876, 2209 4797

BENGALURU :

No. 33, Crescent Road, High Grounds,
Opp. Taj West End Hotel (Back Gate)
Bengaluru - 560 001, India
Tel : +91-80-4128 0992

SALES ENQUIRY:

+91 7098000666
E-mail : sales@kumarlifespaces.com
Website : www.kumarlifespaces.com



The project has been registered via MahaRERA registration number: P52100055932 (Building F, G & H), P52100056164 (Building A, B, C, D & E) and is available on the website maharera.mahaonline.gov.in under registered projects.

PHASE I PHASE II

