

SM *Elite* 

Taloja, Phase 2

*MAKE*  
ELEGANCE OF ROME,  
YOUR HOME.

# SM *Elite*

*UNWIND IN  
ROMAN SPLENDOR*





FITNESS CENTER



SWIMMING POOL



CHILDREN PLAY AREA



INDOOR GAMES

PROJECT HALLMARK 

- Clear Title Transfer Plot
- Classy Look Luxurious Tower
- G +14 Storeyed 2 & 3 BHK Luxurious Homes with Shops
  - Attractive lifestyle covering fitness, fun, entertainment, convenience and comfort
- Elegant and well-designed decorative Entrance Lobby
  - Reputed Automatic High-speed Elevators
  - Power backup facility for Lifts, waterpump, and Lighting for common area
  - Underground and overhead water tank
    - Round the clock security
  - Project Approved by major Financial Institutions and Banks



SENIOR CITIZEN SIT-OUTS



PODIUM GARDEN

SM ELITE *At A GLANCE*



**FLOORING :**

- 32"X 32" Vitrified flooring in Living, Bedroom & Kitchen
- Anti-skid flooring in Toilet & Bath



**KITCHEN :**

- Granite kitchen platform with stainless steel sink
- Designer glazed tiles upto beam height
- Provision for water purifier point



**DOOR & WINDOWS :**

- Decorative laminated Main door
- Decorative laminated Internal doors with wooden frame
- Powder coated Aluminum sliding windows



**ELECTRIFICATION :**

- Concealed copper wiring of polycab or Anchor make with MCB's
- Adequate electrical points in all rooms
- ISI modular switches of premium make



**WALLS & PAINTS :**

- Gypsum finished internal walls
- Plastic paints (Tractor) for Internal walls
- Asian apex paint for external walls or Equivalent



**WATER TANK :**

- Underground & overhead water tank with adequate storage capacity



**TERRACE :**

- Special brickbat water proofing treatment with China Chips flooring on top floor



**BATH / WC :**

- Designer glazed tiles upto beam bottom level
- Branded sanitary wares of reputed make
- Premium quality C.P. Fittings
- Provision for Exhaust Fan & Geyser point



**LIFT :**

- 2 Lift High Speed Elevator and Power backup

*ISOMETRIC VIEW*

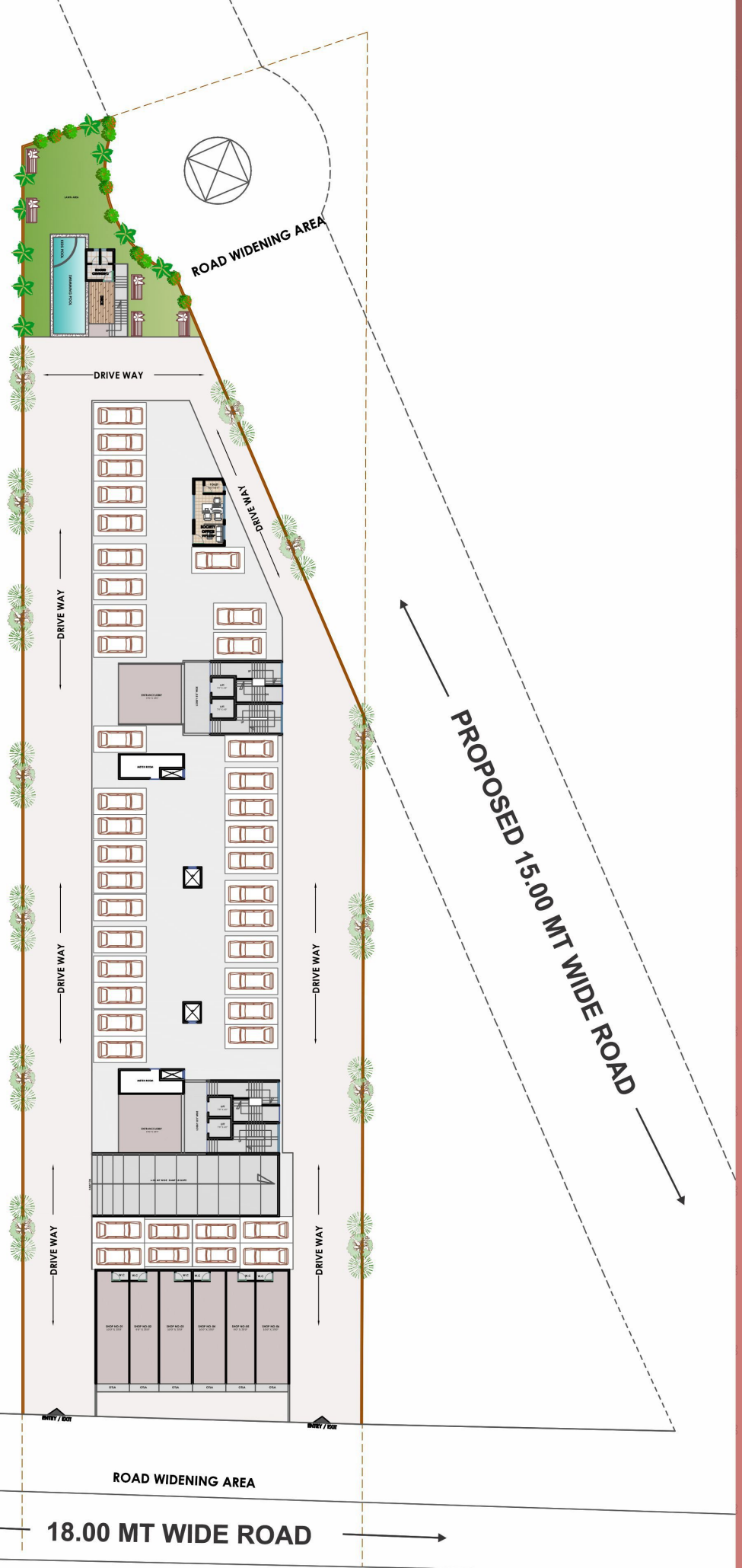


2 BHK FLAT

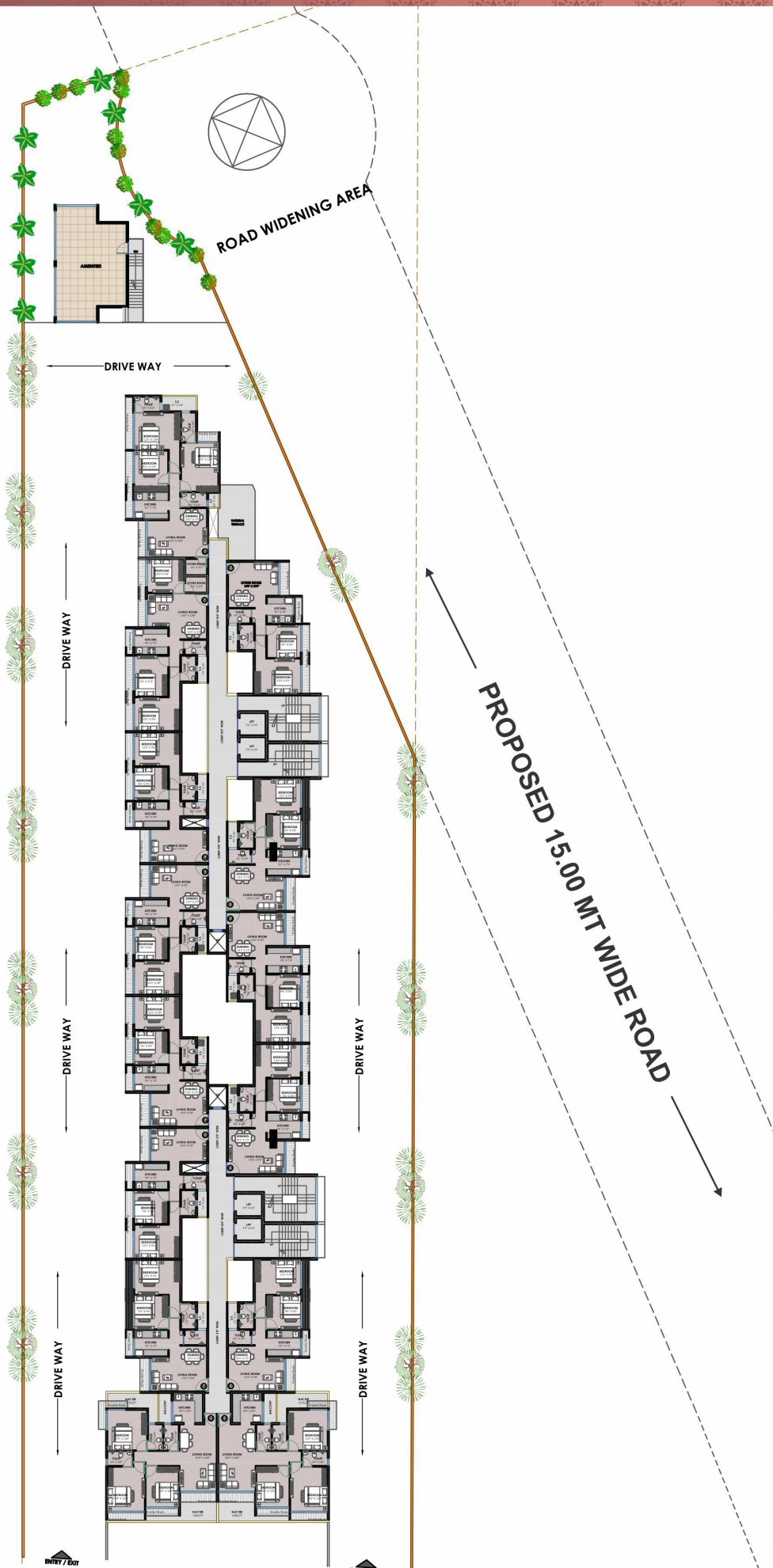


3 BHK FLAT

# GROUND FLOOR PLAN



1ST FLOOR PLAN



ROAD WIDENING AREA

DRIVE WAY

DRIVE WAY

DRIVE WAY

DRIVE WAY

DRIVE WAY

DRIVE WAY

PROPOSED 15.00 MT WIDE ROAD

ROAD WIDENING AREA

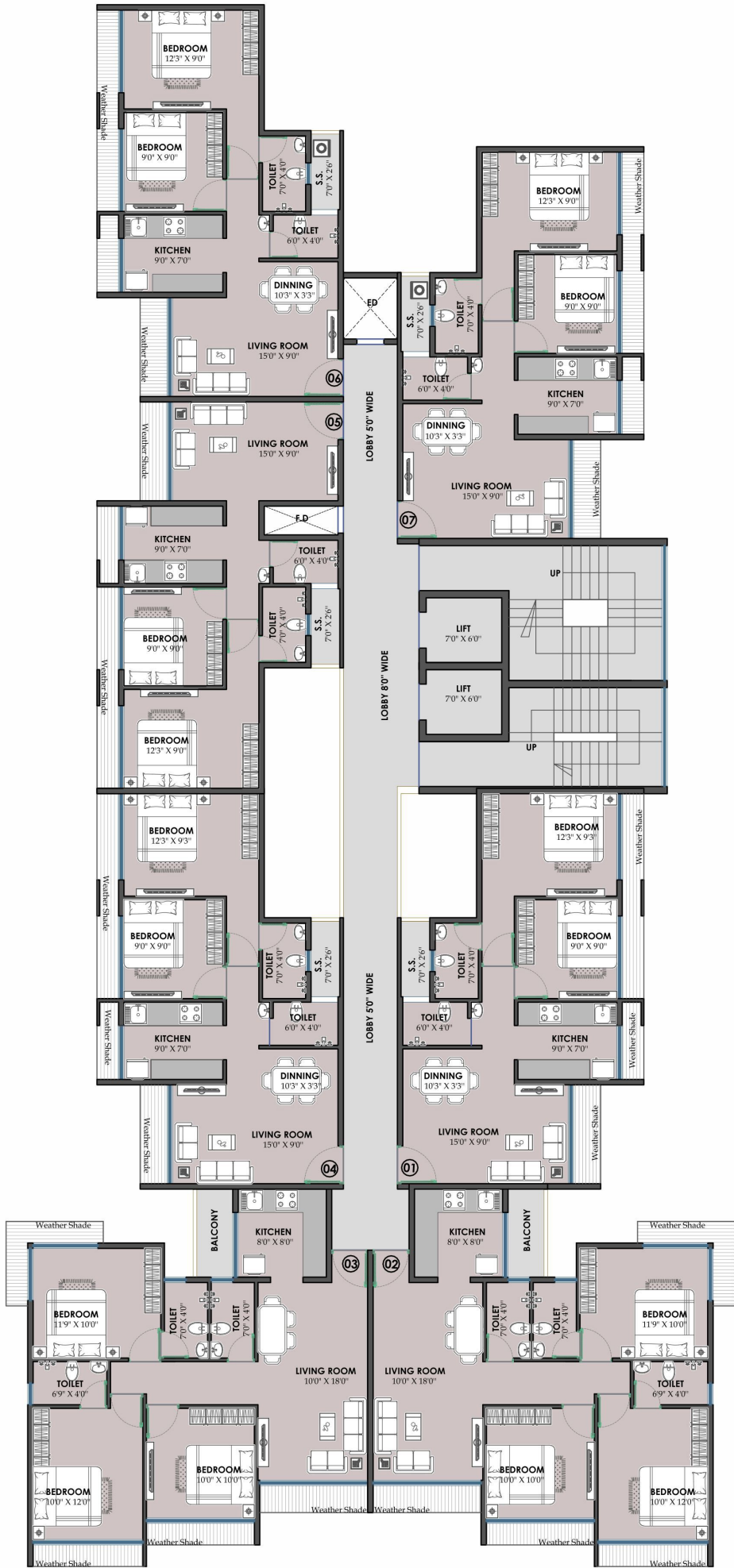
18.00 MT WIDE ROAD

ENTRY / EXIT

ENTRY / EXIT

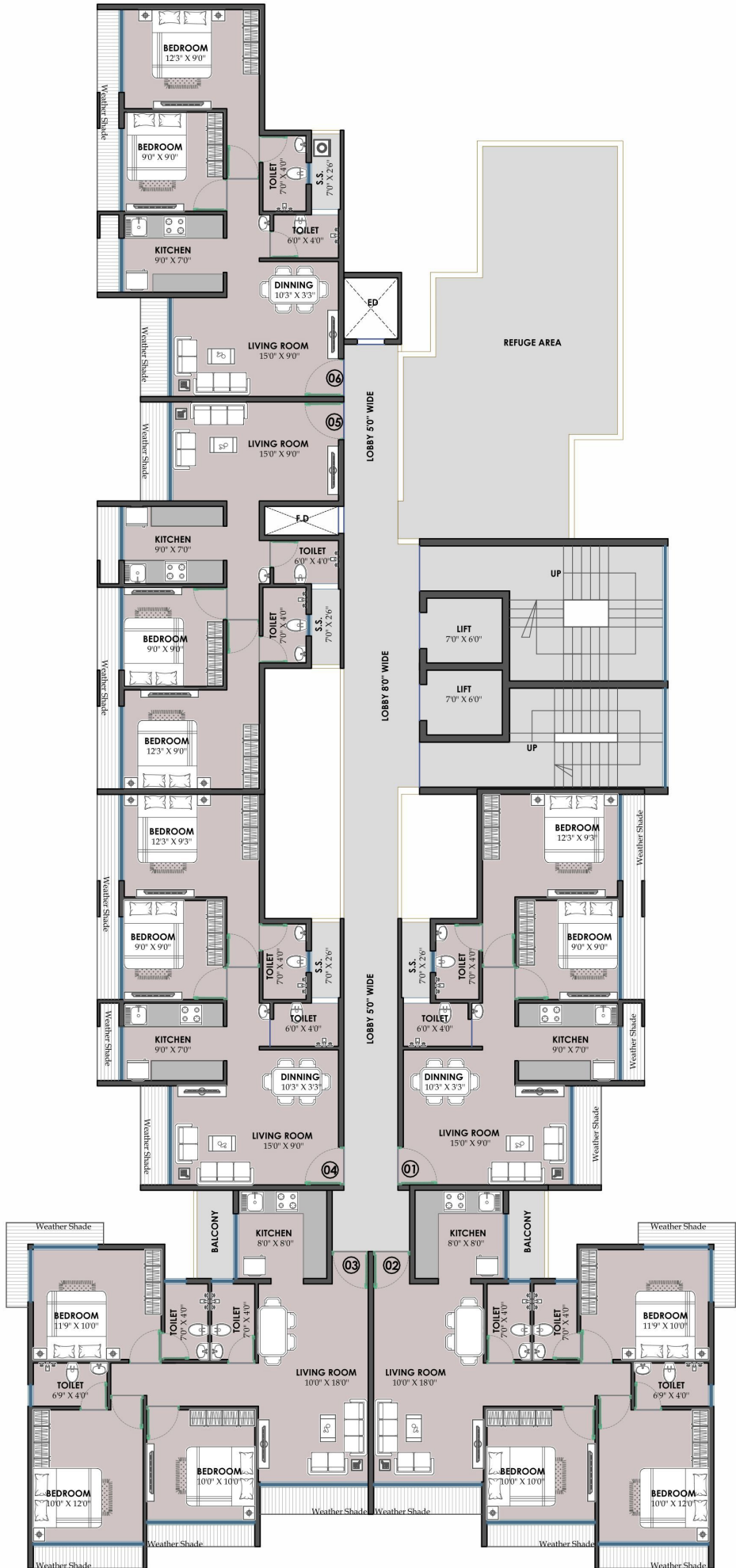
2ND TO 7TH, 9TH TO 12

TYPICAL FLOOR PLAN



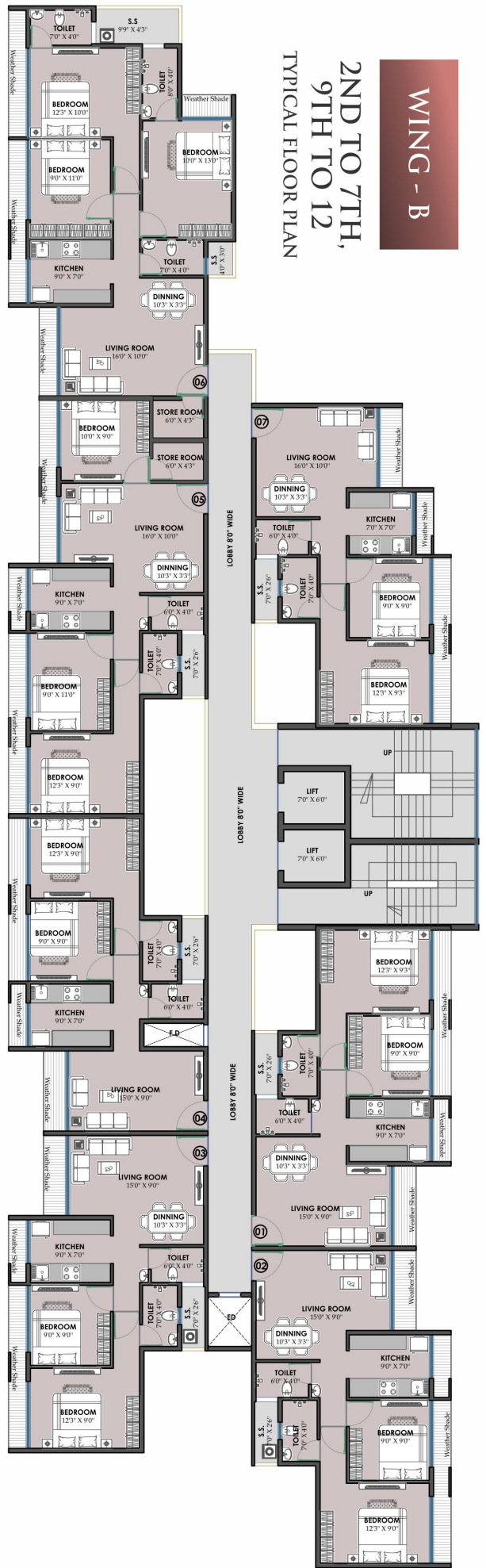
WING - A

8TH FLOOR PLAN



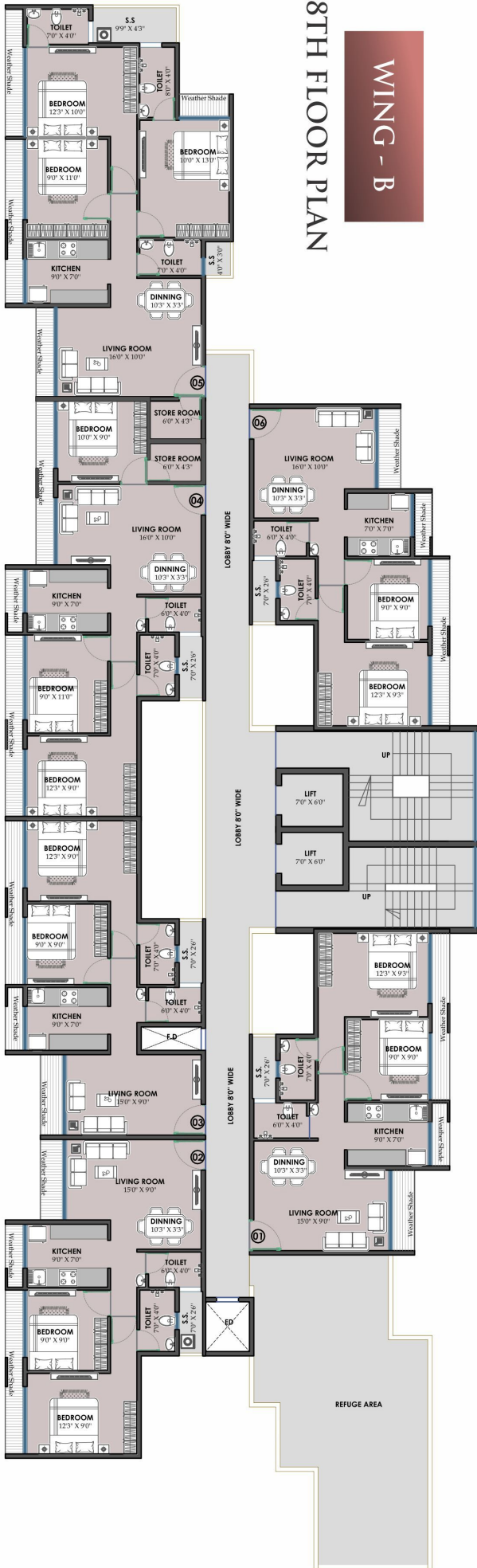
WING - B

2ND TO 7TH,  
9TH TO 12,  
TYPICAL FLOOR PLAN



WING - B

8TH FLOOR PLAN



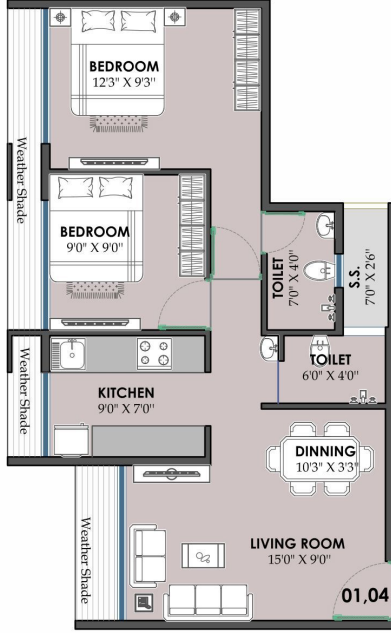
## 2 BHK UNIT

TYPE -3

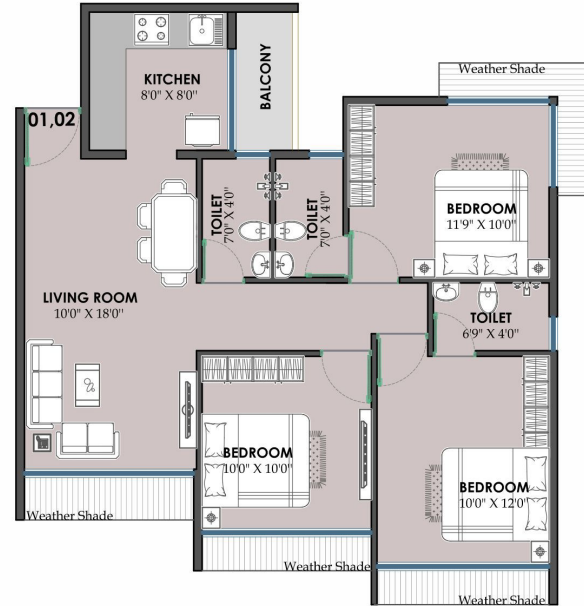


## 2 BHK UNIT

TYPE -1

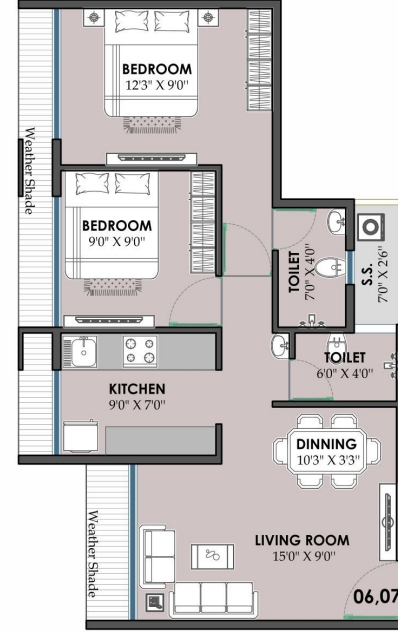


## WING - A



## 3 BHK UNIT

TYPE -1

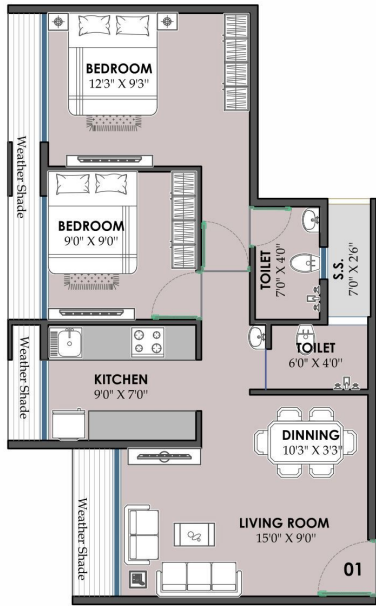


## 2 BHK UNIT

TYPE -2

## 2 BHK UNIT

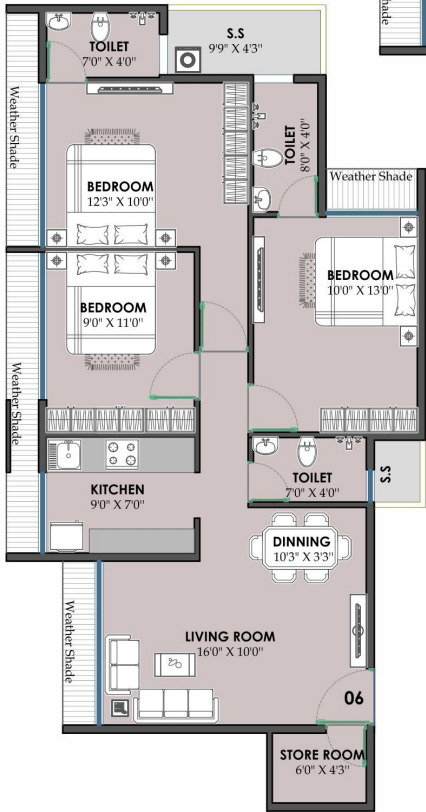
TYPE -1



WING - B

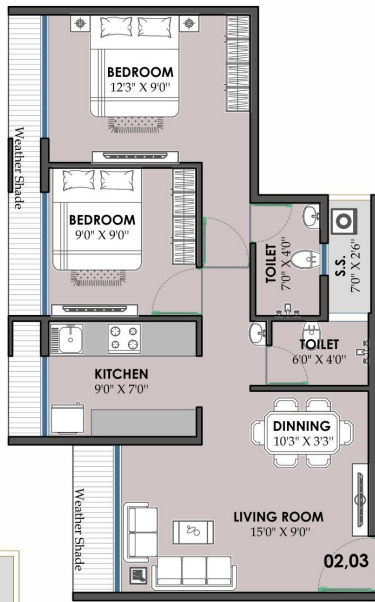
## 3 BHK UNIT

TYPE -1



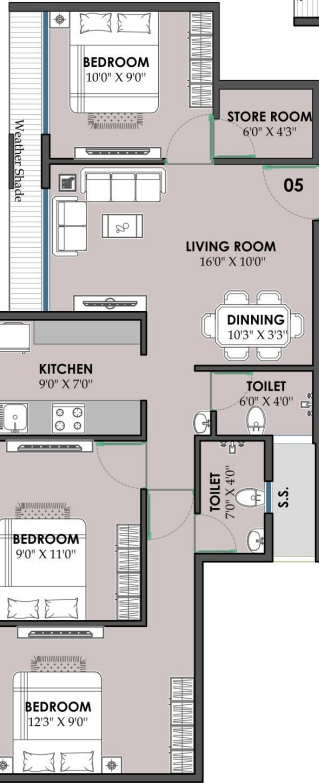
## 2 BHK UNIT

TYPE -2



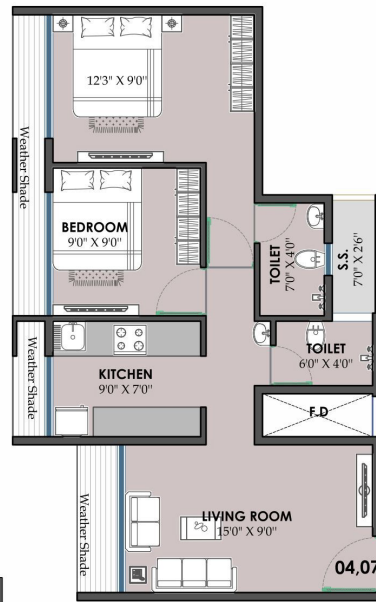
## 2 BHK UNIT

TYPE -3

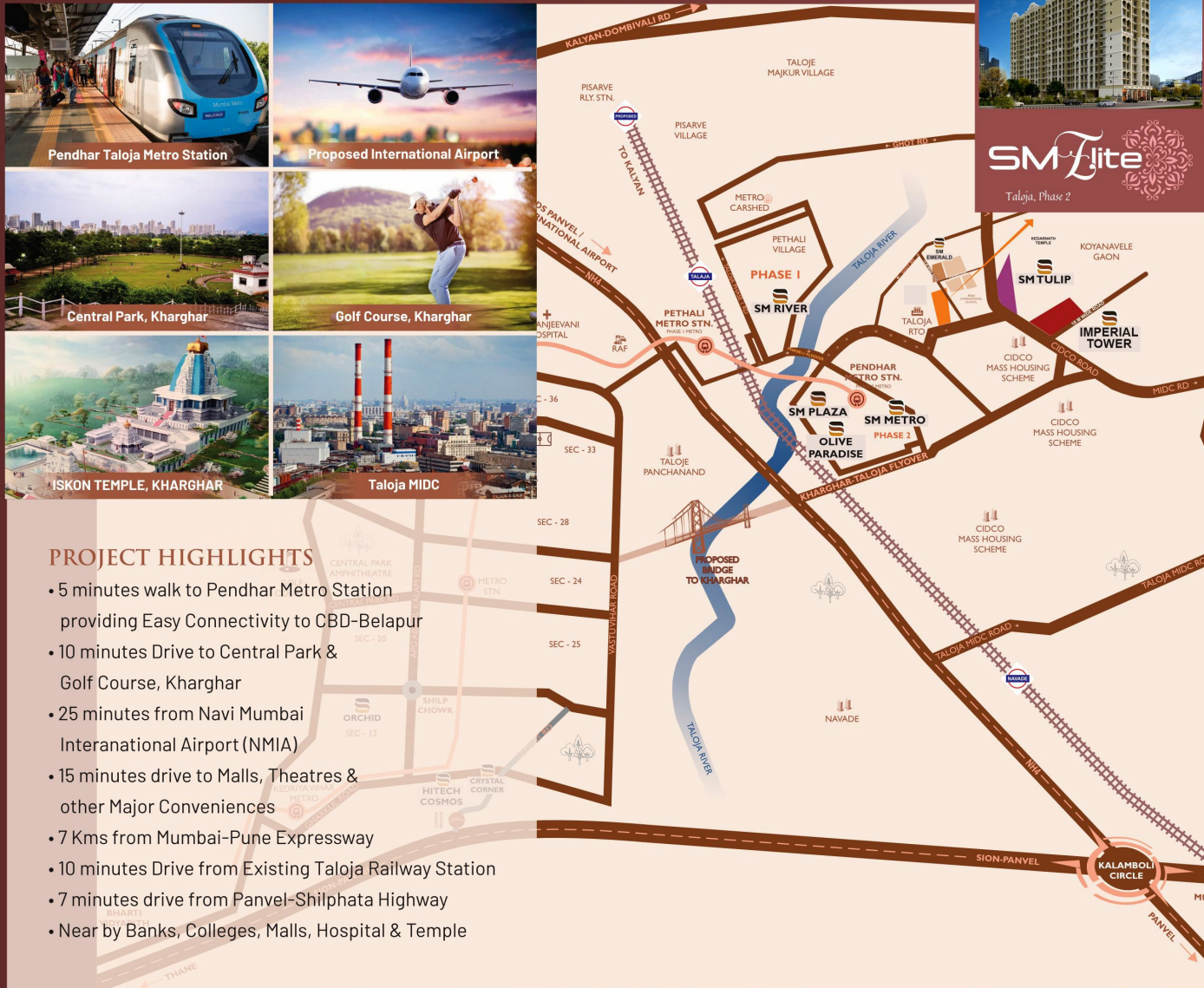


## 3 BHK UNIT

TYPE -1



## LOCATION MAP



A Project By :



**S.M. HITECH DEVELOPERS**

Solid Foundations, Fresh Innovations

**Site Address :**

Survey No. 111/2 At Taloja Majkur, Phase 2,  
Navi Mumbai, Maharashtra 410208.

**Booking Office :**

Shop No. 7&8, SM River, Plot No. 16,  
Sector - 08, Taloja Phase I, Navi Mumbai 410 208.

**Email :**

smhitech7865@gmail.com

For Booking Contact :

**99303 57927**

**89760 74536**

**89760 74537**

Architect :  
**DESTINATION**

RCC Consultants :  
**ADARSHILA  
CONSULTANTS**

### PROJECT HIGHLIGHTS

- 5 minutes walk to Pendhar Metro Station providing Easy Connectivity to CBD-Belapur
- 10 minutes Drive to Central Park & Golf Course, Kharghar
- 25 minutes from Navi Mumbai Interanational Airport (NMA)
- 15 minutes drive to Malls, Theatres & other Major Conveniences
- 7 Kms from Mumbai-Pune Expressway
- 10 minutes Drive from Existing Taloja Railway Station
- 7 minutes drive from Panvel-Shilphata Highway
- Near by Banks, Colleges, Malls, Hospital & Temple

Disclaimer : This communication is purely conceptual and is not a legal offering. it is made for only promotional purposes. the information contained in this communication is only indicative of the kind of development that is proposed and is subject to change. The developers reserve the right to make change or alterations at their sole discretion.