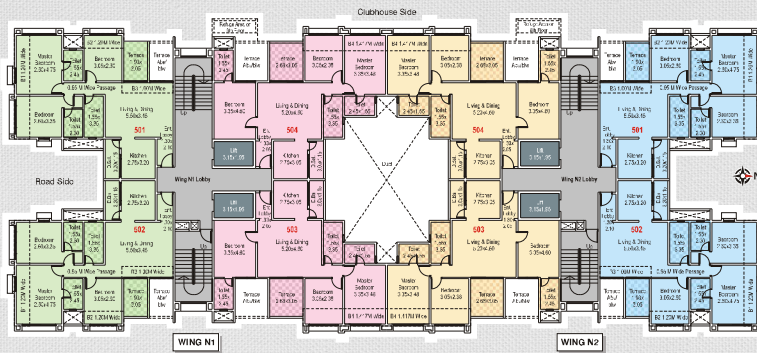


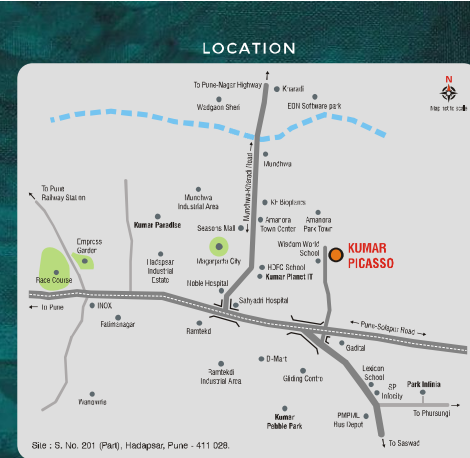
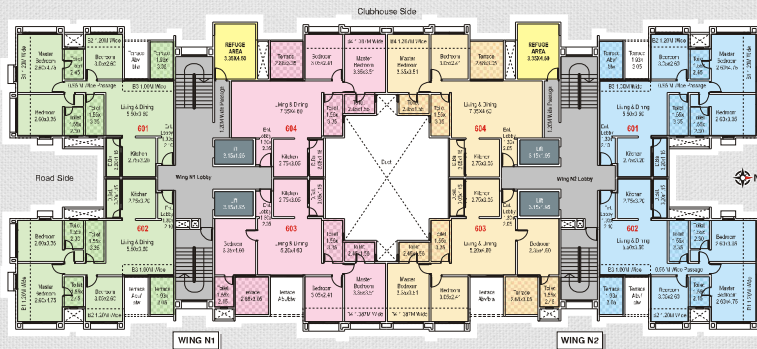
5th Floor Plan

Wing	Apartment No.	Carpet Area (sq.ft.)	Enclosed Balcony (sq.ft.)	Terrace (sq.ft.)	Driv. Balcony (sq.ft.)
N1	501, 502	83.76	15.39	5.72	• 3.53
	503	87.79	8.29	8.00	• 3.37
	504	87.79	8.29	•	8.00 3.37
N2	501, 502	83.76	15.39	5.72	• 3.53
	503	87.79	8.29	8.00	• 3.37
	504	87.79	8.29	•	8.00 3.37



6th (Refuge) Floor Plan

Wing	Apartment No.	Carpet Area (sq.ft.)	Enclosed Balcony (sq.ft.)	Terrace (sq.ft.)	Driv. Balcony (sq.ft.)
N1	601, 602	83.76	15.39	5.72	3.53
	603	88.98	7.43	7.88	3.37
	604	77.92	8.10	6.00	3.37
N2	601, 602	83.76	15.39	5.72	3.53
	603	88.98	7.43	7.88	3.37
	604	77.92	8.10	6.00	3.37



Developers
Kumar Properties & Real Estate Pvt. Ltd.

Architect
Jagdish Deshpande

RCC Consultant
Sunil Mutalik & Associates

Landscape Design
Shobha Bhopalkar

Service Consultant
M/s. Desaijwale

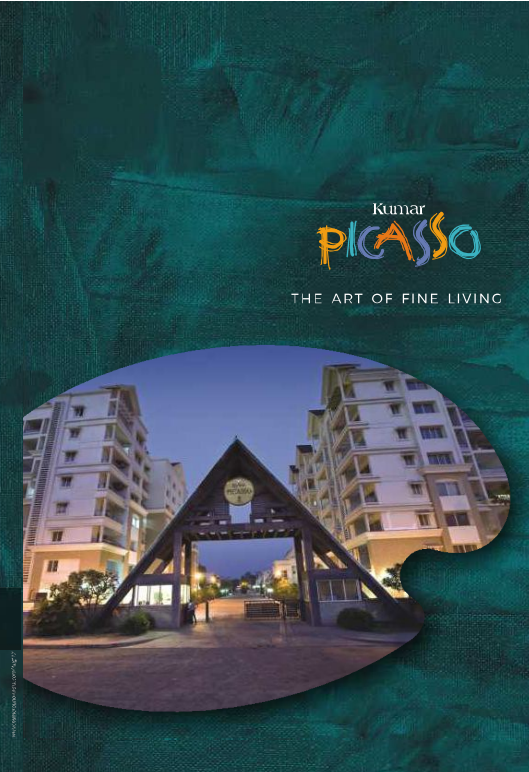
Registration No. PS1210000104


maharashtra.registration.gov.in

Kumar Properties
Construction & Biotechnology
BUILDING TRUST & RELIABILITY SINCE 1966

CORPORATE OFFICE - PUNE: Kumar Dapal 2413, East Street, Camp, Pune - 411 001, India. Tel: +91-20-3562-8888, 3058-3863-62. Fax: 2630-3365
MUMBAI: 21, Marwadi Schemes Wing, Worli Road, Dnyaneshyashanti Park, Marwadi, Mumbai - 400 005, India. Tel: +91-20-2988-1878, 2908-4137. Fax: 7268-1796
BANGALORE: 75, 3rd Cross Street, 6th Cross Street, 7th Cross Street (Back Lane), Bangalore - 560 001, India. Tel: +91 90 4128 0992

Sales Enquiry : 9595 110011, 9595 600066, 9595 770077
E-mail : sales@kumarworld.com
www.kumarworld.com



Kumar
PICASSO
THE ART OF FINE LIVING



2 & 3 Bedroom Premium Apartments
Hadapsar

THE COLOURS OF EXCELLENCE REFLECTING AN EXALTED LIFESTYLE!

Kumar Picasso is set in the most prime location of Kharadi-Hadapsar bypass. A coveted area, the project is nestled among reputed IT companies, world-class malls and townships. Though set in the hub of activity, Kumar Picasso has the quiet charm of overlooking artistic bungalows and clubhouse of the project.

At Kumar Picasso, luxury is an integral part of its artistic homes. The project offers spacious 2 and 3 bedroom apartments, elegantly designed for comfort. The top-of-the-line amenities are ready for your exclusive use.

Kumar Properties - a hallmark of trust and excellence for more than five decades, has set in impeccable quality, thoughtful design and rich experience to create a masterpiece in luxury residences. Kumar Picasso is crafted with care and attention to suit the tastes and comforts of those who appreciate the art of fine living.

READY LIFESTYLE AMENITIES

- Swimming Pool with Baby Pool
- Clubhouse with Gymnasium, Yoga / Meditation Centre, Library and Lounge
- Tennis Court
- Health Club with Jacuzzi
- Banquet Hall
- Party Lawns
- Play Park for Kids
- Trellis Landscape



On-location Images



SPECIFICATIONS

CONSTRUCTION

- A-Class, earthquake-resistant construction
- Entire building painted with acrylic paint of external grade.

ENTRANCE LOBBY

- Designer finish entrance lobby.

FLOORING

- 800 X 800 mm vitrified tiles in living, kitchen and bedrooms.
- Mat finish ceramic flooring in toilets.
- Anti-skid tiles for balconies/terraces.

DOORS AND WINDOWS

- Pne-moulded VENE skin door with SS fitting for entrance and pne-moulded HTP skin door for bedrooms.
- Water-resistant door shutter with SS fitting for toilets
- Powder-coated aluminium sliding windows with MD grids.
- Combination of MS-SS/Glass railing for attached terraces.

WALLS AND CEILINGS

- Gypsum punning on walls.
- Superior internal OGD paint finish.

KITCHEN

- Granite kitchen counter.
- Stainless steel sink
- Glazed tile dado up to window height.
- Provision for water purifier and exhaust fan.

BATHROOMS AND TOILETS

- Concealed plumbing.
- Sunken drainage system
- Single lever diverter in shower areas along with single lever basin mixer for master toilet.
- Floor mounted WC units with flush tanks.
- 7 height toilet cists with ceramic tiles.
- Provision for boiler and exhaust fan in all toilets.

ELECTRICALS

- Concealed copper wiring in the entire apartment with ELCB and MCB switches in the main board.
- Modular electrical switches and sockets.
- Adequate points for lights, fans and TV.
- Telephone point in living and bedrooms.
- Provision for Cable TV and broadband.
- Provision for split AC in living and master bedroom.

LIFTS

- Modern automatic lifts of reputed brand.

SAFETY

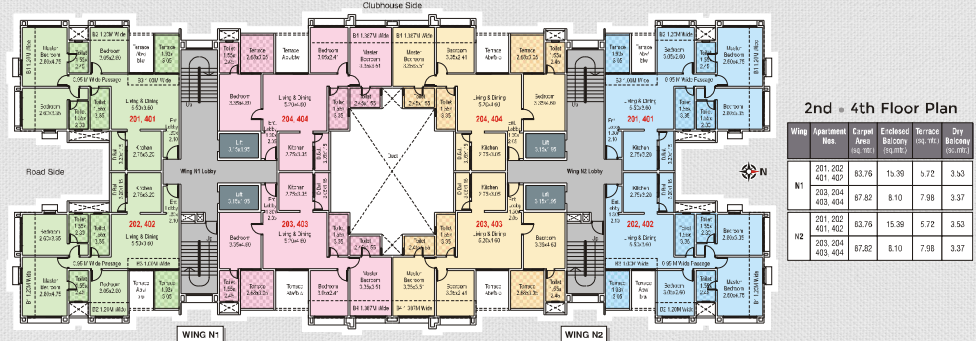
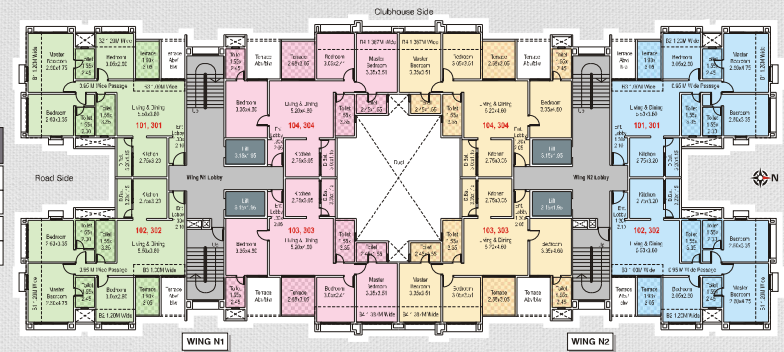
- Intercom facility.
- CCTV camera at ground floor entrance lobby.

ECO-FRIENDLY SYSTEMS

- Sewage treatment plant.
- Rainwater harvesting.
- Water treatment plant.

1st & 3rd Floor Plan

Wing	Apartment Nos.	Carpet Area (sq.ft.)	Enclosed Balcony (sq.ft.)	Terrace (sq.ft.)	Day Balcony (sq.ft.)
W1	101, 102	83.75	15.39	5.72	5.53
	301, 302	87.88	8.10	8.00	3.37
	103, 104	83.75	15.39	5.72	5.53
W2	101, 102	83.75	15.39	5.72	5.53
	301, 302	87.88	8.10	8.00	3.37
	103, 104	83.75	15.39	5.72	5.53



2nd & 4th Floor Plan

Wing	Apartment Nos.	Carpet Area (sq.ft.)	Enclosed Balcony (sq.ft.)	Terrace (sq.ft.)	Day Balcony (sq.ft.)
W1	201, 202	83.75	15.39	5.72	5.53
	401, 402	87.88	8.10	7.98	3.37
	203, 204	83.75	15.39	5.72	5.53
W2	201, 202	83.75	15.39	5.72	5.53
	401, 402	87.88	8.10	7.98	3.37
	203, 204	83.75	15.39	5.72	5.53