

SURENDRA
select
live in luxury

Get in Touch



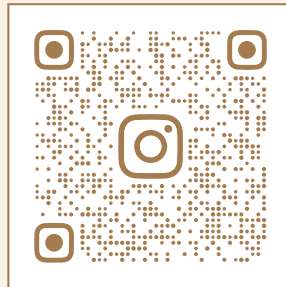
sales@surenraselect.com



+91 72250 60445 | +91 72250 60446 | +91 72250 60447



surendragroup.com



Scan to Follow

Architect

**MANOJ
MISRA**
& ASSOCIATES
168, ZONE II, MP NAGAR, BHOPAL

A project by

SURENDRA
GROUP

&

KOLAR
DEVELOPERS



SURENDRA
select
live in luxury



SURENDRA
select
live in luxury

3 & 4 BHK
PREMIUM APARTMENTS

IN THE HEART OF KOLAR, BHOPAL

The Experience

Where Luxury Finds Its True Address

Located in the heart of Kolar, just steps away from the prominent six lane road, Surendra Select offers the perfect blend of prime location and premium living in Bhopal.

Surendra Select is one of its kind a premium township with a two-side open layout, offering excellent cross ventilation, abundant natural breeze, and uninterrupted views on both sides.

Here, you don't just live, you thrive. With spacious 3 BHK apartments and grand 4 BHK residences, each home is crafted for those who seek elegance, comfort, and an elevated lifestyle.

Whether it's waking up to park-facing views, enjoying open spaces without rear congestion, or experiencing flawless structural design, Surendra Select is where your next chapter of refined living begins.

Adjacent to Surendra Select is a **200-room luxury 5-star hotel and premium commercial complex** with **exclusive retail and world-class hospitality, redefining everyday convenience and elegance.**



Vasudha & Vibhav

Two Towers. One Balanced Life.



VASUDHA

**Symbol of Nurture, Stability,
and Earth's Abundance.**

Rooted in the essence of "Mother Earth," Vasudha stands for grounded living, serenity, and balance. Surrounded by greenery and park-facing views, every apartment in Vasudha connects you to nature.

VIBHAV

**Embodiment of Wealth,
Success, and Aspirational Living.**

Inspired by the Sanskrit word for prosperity, Vibhav is a tribute to success. With elegant design and premium specifications, Vibhav reflects prestige and affluence.

Together, Vasudha and Vibhav create a living experience that balances tranquility with affluence, a lifestyle where you **LIVE IN LUXURY, EVERY DAY.**





SURENDRA
select
live in luxury

Designed For Living

Designed for Living

- **Park-Facing Apartments**

Every apartment overlooks a landscaped park, filling your home with light and calm.

- **Two-Side Open Layout**

Unique township planning allows air and light to flow freely through every apartment. With no construction at the rear, every home gets the benefit of fresh air, privacy, and natural breeze from both sides.

- **Smart Column-Free Interiors**

All structural columns are placed along the outer walls, giving wide open rooms without pillars inside.

- **Double-Strength Slabs & Columns**

Designed for extra safety and better parking planning.

- **Only 2 Apartments Per Floor in Each Block**

With three blocks and just two apartments per floor in each, Surendra Select offers a peaceful, low-density living experience, ensuring privacy, ventilation, and reduced noise.

- **Two Lifts in Every Block**

Each floor is served by two high-quality lifts, a dedicated passenger lift for residents and a large-capacity service lift for moving furniture.

Amenities



Smart Living with Automation

Experience the next level of comfort and control at Surendra Select with advanced Wi-Fi-enabled smart switches installed in all bedrooms and the living room. Seamlessly manage your lights and appliances through your smartphone or voice assistants like Alexa and Google Home. Whether you're relaxing in bed or away from home, enjoy effortless control, enhanced energy efficiency, and the luxury of a truly connected lifestyle, all designed to match the modern pace of life.



Air Conditioning Ready

Apartments come with concealed AC piping and thoughtfully planned outdoor unit locations for a clean look and effortless installation.



Secure Entry with Smart Door Lock

Enjoy convenience and enhanced safety with a state-of-the-art smart lock on your main door.



Power Backup

Reliable power backup ensures uninterrupted electricity in all essential areas, including lifts, and common spaces.



24-Hour Security

Round-the-clock professional security staff and surveillance systems to keep your family safe and your mind at ease.



Banquet Hall

Celebrate life's milestones and host gatherings in an elegant, well-appointed party space within the premises.



Fully Equipped Gym

A modern fitness center featuring top-of-the-line equipment to support your health and wellness journey without leaving home.



Swimming Pool

A beautifully designed pool where residents can unwind, stay fit, or spend quality family time.



Landscaped Garden & Central Park

A green oasis at the center of the community, ideal for walks, kids' play, and peaceful relaxation amidst nature.



Podium & Stilt Parking

A green oasis at the center of the community, ideal for walks, kids' play, and peaceful relaxation amidst nature.



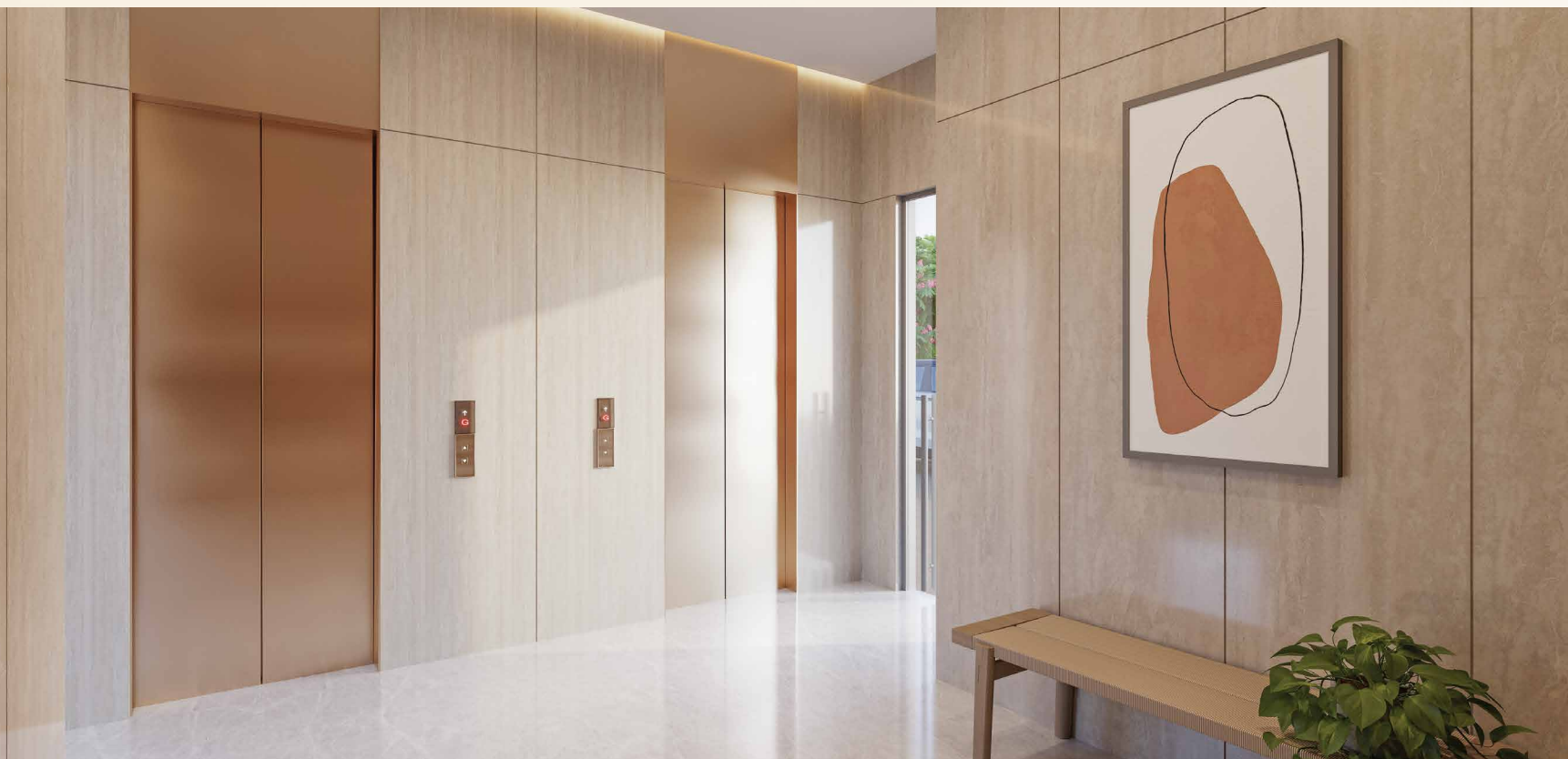
10 Floors of Premium Living

A thoughtfully planned vertical structure offering a blend of exclusivity and community, with just Two apartments per floor.



Rainwater Harvesting

An eco-conscious feature that promotes sustainable water use and supports environmental responsibility.



More Than Just Features



SWIMMING POOL



FULLY EQUIPPED GYM



BANQUET HALL



LANDSCAPED GARDEN & CENTRAL PARK



PODIUM & STILT PARKING



4 BHK FLOOR PLAN

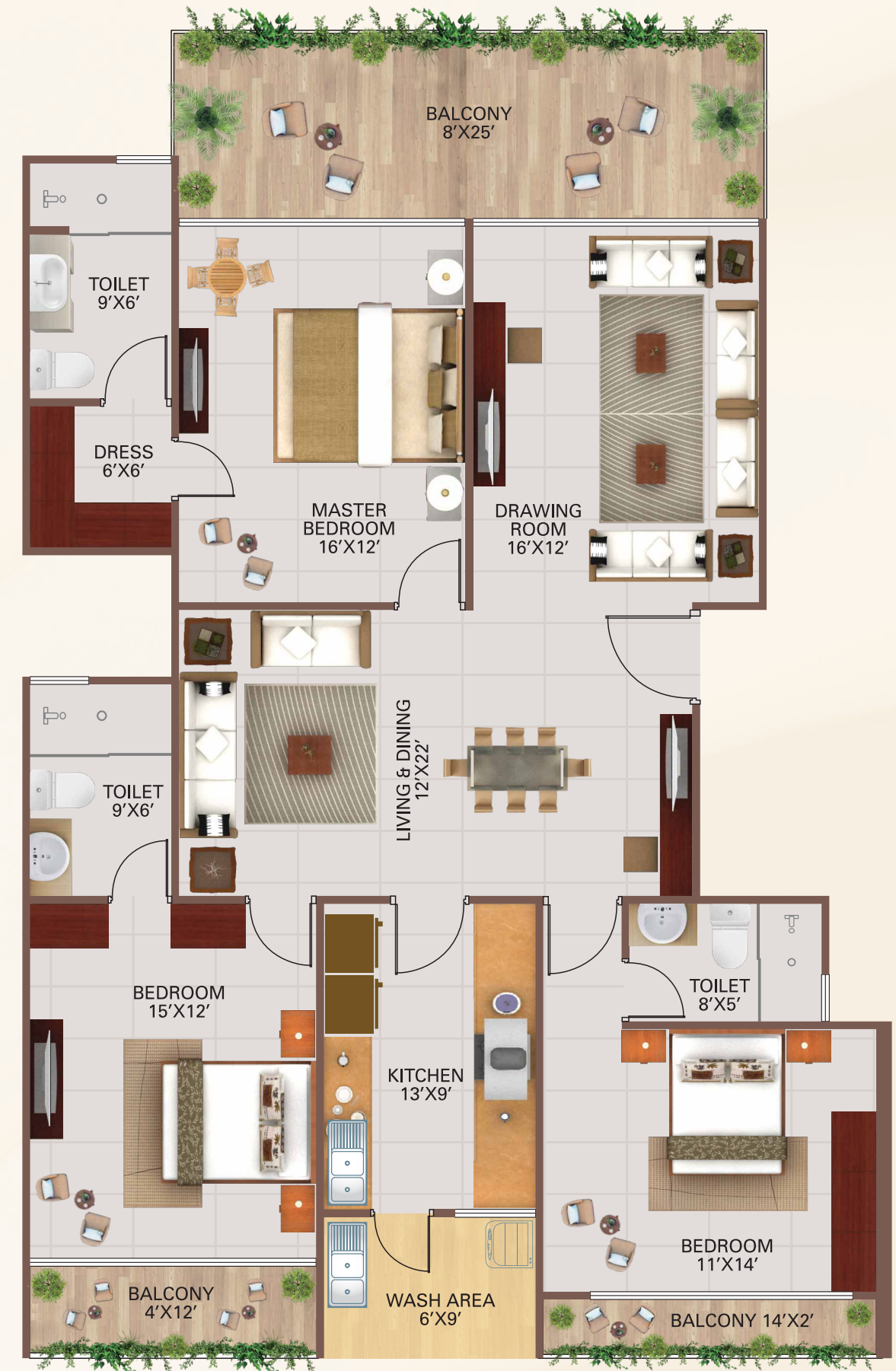
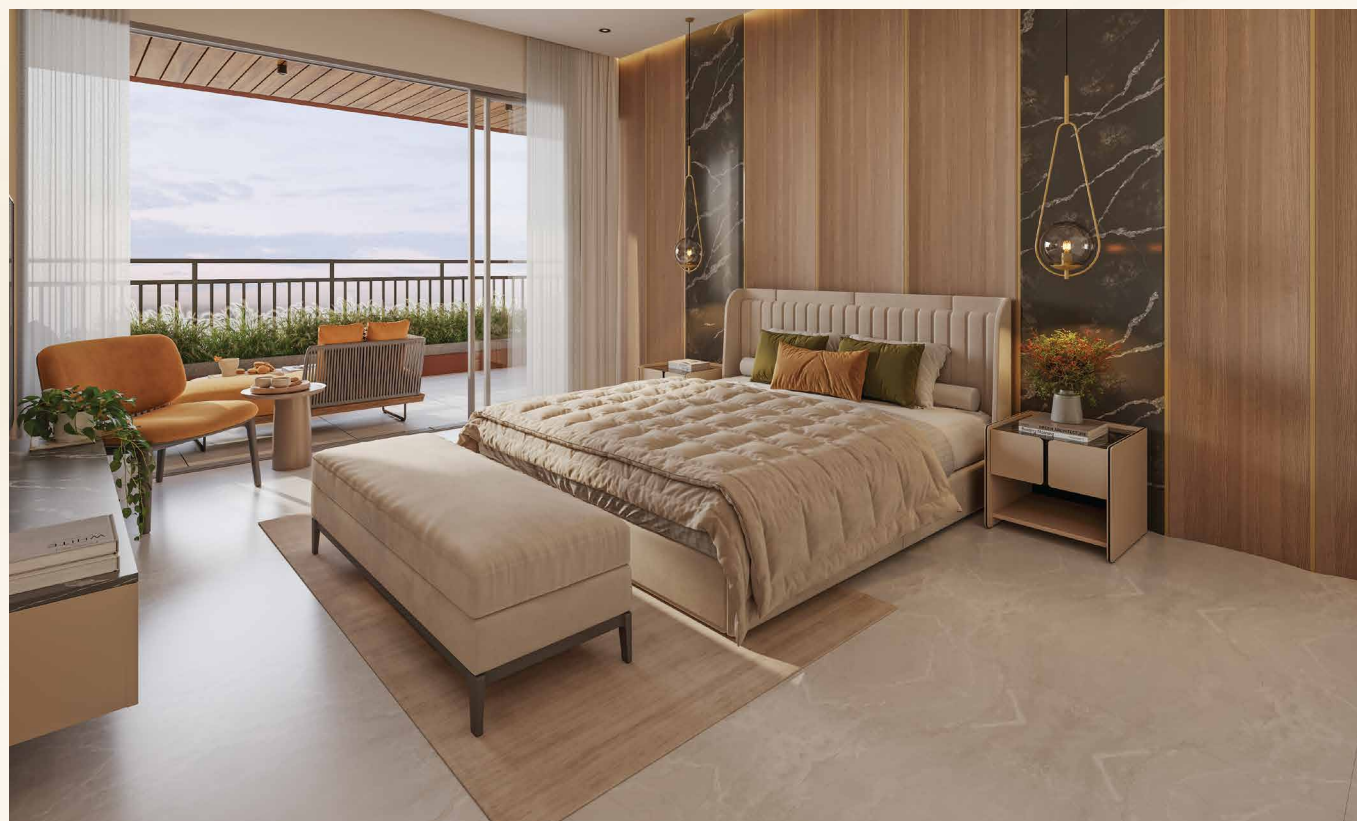
2152 Sq. Ft. Builtup
For those who seek more
space, style, and flexibility.





3 BHK FLOOR PLAN

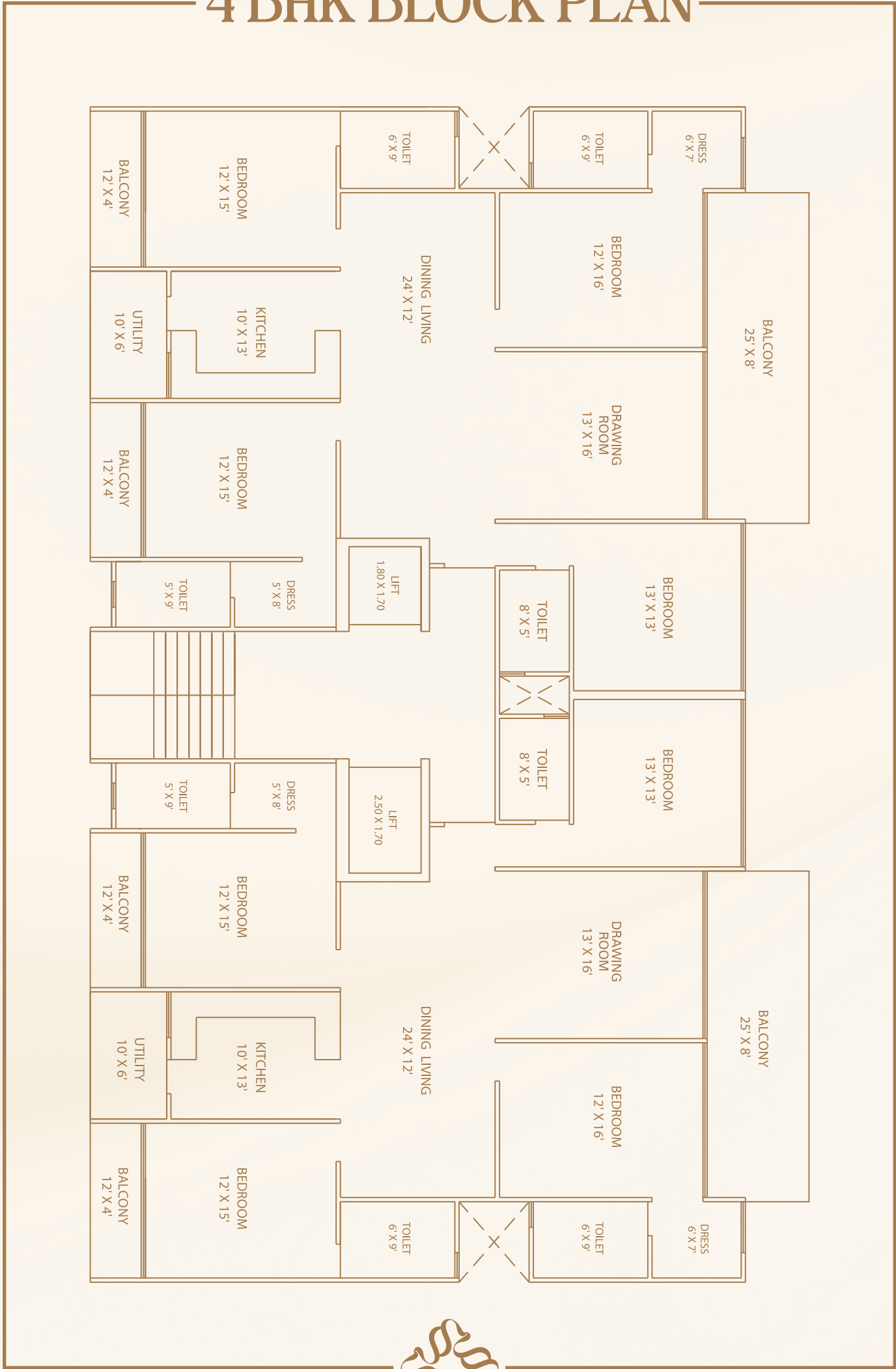
1721 Sq. Ft. Builtup
Perfect for modern families who
value comfort and smart space.



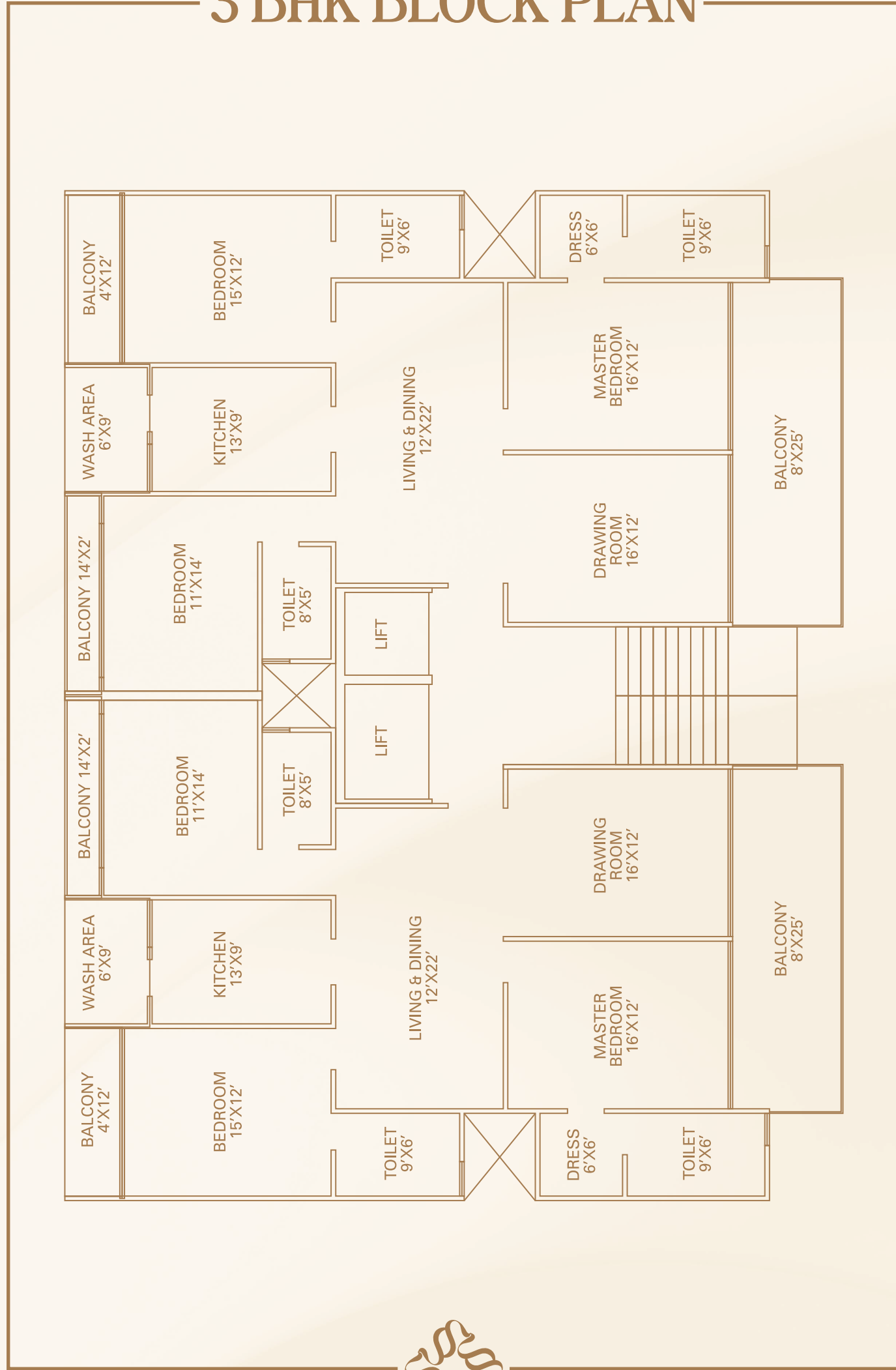


*Curated For A Life
Well Lived...*

4 BHK BLOCK PLAN



3 BHK BLOCK PLAN





Luxury in Every Corner

8x25 Ft Balcony



Specifications

Structure & Layout

- Earthquake-resistant RCC frame structure
- Smart column-free interiors with outer wall columns
- Extra-strong slabs and columns

Flooring

- Premium vitrified tiles in living, dining, and bedrooms
- Anti-skid ceramic tiles in bathrooms and balconies

Doors & Windows

- Lamanate-finished main door with high-quality hardware
- Durable internal flush doors
- Full length Sliding windows with mosquito mesh

Kitchen

- Granite platform with stainless steel sink
- Designer wall tiles
- Chimney and purifier provisions

Bathrooms

- Branded fittings (Jaquar/Grohe/Similar)
- Concealed plumbing for hassle-free maintenance
- Designer tiles and exhaust fans

Electrical

- Modular switches and concealed wiring
- AC points in bedrooms and living room

Walls & Paint

- Putty finish and premium interior paint
- Weather-resistant exterior paint

Balconies

- Spacious 8x25 ft park-facing main balcony
- Open views, natural light, and privacy



Disclaimer

- The brochure is for the easy presentation of the Project. It should not be considered as a part of the legal documents. For further information regarding the Project, the member/customer is requested to check the details at the Developer's office before going ahead with the booking.
- The furniture and fixtures, electrical appliances and other loose items shown in the brochure are only for illustrative purposes and do not form a part of the standard product on sale.
- The furniture layout shown in the brochure is only suggestive and subject to change as per site conditions and as per the instructions of the Project Architect. The Promoter/Developer reserves the right to make changes in the Project, its amenities and specifications as may be suggested by the Project Architect or the Structure consultant and any such changes made shall be binding on the customers/members of the Project.
- The Promoter/Developer reserves the right to make minor on-site changes during the course of construction and such changes shall be binding on all the members/customers of the Project.
- The dimensions shown in the brochure are approximate and calculated from unfinished surfaces and are rounded off to nearest whole number.
- The images (interior and exterior views) in the brochure are computer stimulated graphics for representational purpose and are subject to errors and omissions. The images used may be stock images or images based on the architectural plans of the Project. They shall not be construed as actual depictions of the Project.
- The north direction shown in the brochure is approximate and can be erroneous. The Member/Customer is expected to verify the same personally before going ahead with the booking.
- The Key Plan in the Brochure is not to scale and does not depict the exact location of the Project or the connecting road network or other abutting structures or landmarks.
- It is only for representation purpose and gives a rough idea about the approximate location of the Project. The Member/Customer is requested to visit the Project site and check the physical location of the Project and its surroundings before going ahead with the booking.



The Most Coveted Address in Kolar

Effortless connectivity to Bawadiya Kalan, Chuna Bhatti Square, MP Nagar, New Market, and other key destinations

Live in Luxury. Now Within Reach.

Connectivity at a Glance

- 1 min from 45-meter main road
- 5 mins to top schools and hospitals
- 5 mins to Chuna Bhatti Square
- 10 mins to Bawadiya Kalan, MP Nagar, and New Market
- Easy access to city center and major roadways
- Surrounded by peaceful residential pockets and green spaces

Site Office:

Banjari, opp S.P Mukherjee stadium, Kolar, Bhopal. M.P 462042

Head Office:

Hotel Lemon tree, 240, Zone-1, M.P Nagar Bhopal. M.P 462011

