




Jaydeep & Gami Evara, Chembur West, Tilak  
Nagar, Kurla, Mumbai, Maharashtra 400089

MAHARera No.:  PM1180002501367 Available on: <http://maharera.mahaonline.gov.in>



SIGNATURE HOMES

## THE LANDMARK THAT DEFINES YOU.



Experience the best of Chembur at Tilak Nagar's premium address. Spacious homes with rooftop indulgences and serene open views. Beside a vast playground, where life breathes freely. Discover refined living in the heart of the city.



Representational images

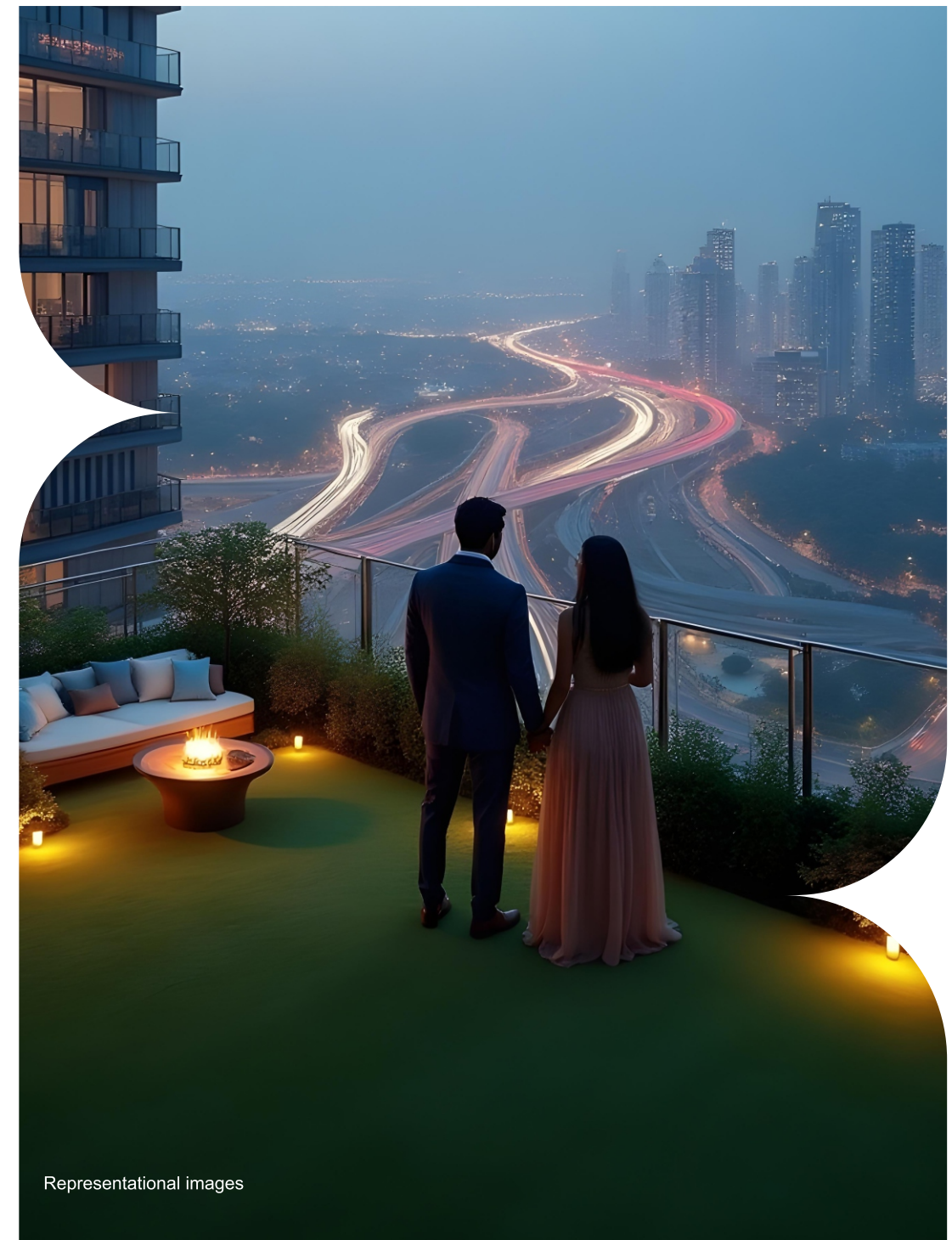
—◆—

WHERE THE  
ROOFTOP  
REDEFINES  
LUXURY.

—◆—

---

Indulge in spaces crafted high above the ordinary. Experience Chembur's finest rooftop lifestyle refined, serene, and social. From sunrise workouts to starlit evenings, life unfolds beautifully. This is elevated living, in every sense.



Representational images

# THE CENTRE OF LUXURY. THE ESSENCE OF CHEMBUR

A rare address that blends connectivity, space, and serenity. Thoughtfully designed homes with rooftop indulgences above. Surrounded by greens, open views, and quiet sophistication. Where every detail reflects the art of fine living.



# WHERE EVERY STEP SHRINKS THE CITY



## CONNECTIVITY

Tilak Nagar Railway Station  
Chembur Monorail Station  
Chhatrapati Shivaji Maharaj  
International Airport  
Eastern Express Highway  
Santacruz-Chembur Link Road  
Eastern Freeway

## MALLS

K Star Mall  
Phoenix Marketcity Kurla  
Jio World /jio World Plaza

## HEALTHCARE

SRV Hospital,  
Zen Multi Speciality Hospital

## EDUCATIONAL INSTITUTES

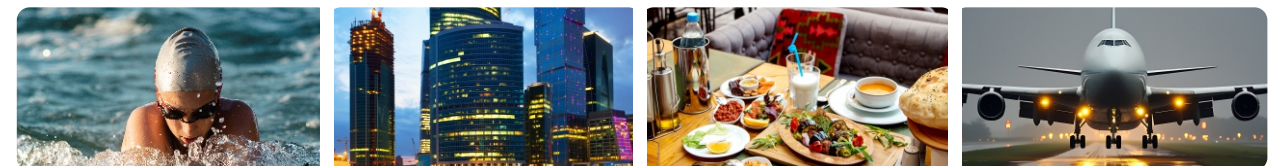
Universal High School  
Lokmanya Tilak High School  
Orchids The International School;  
Yuva Junior College  
Sree Narayana Guru College of  
Commerce  
Vivekananda Institute of Management

## GYMKHANA

Chembur Gymkhana

## COMMERCIAL HUB

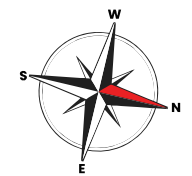
Bandra Kurla Complex  
Chembur Commercial Zone



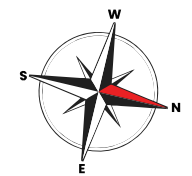
Representational images

Representational images

# GROUND FLOOR PLAN



# 12TH-14TH, 16TH & 17TH - TYPICAL FLOOR PLAN





## Two Visions. One Legacy. A Future Reimagined.



Gami and Jaydeep come together as a formidable real estate force, driven by a shared vision to shape the future of urban living. Their partnership blends innovation, experience and purpose, creating developments that uplift lifestyles and redefine what modern living can be. Together, they are not just building spaces — they are crafting opportunities, transforming neighbourhoods and elevating the way people live, grow and aspire.

