

where
life
flows

Project Developer
SANKLECHA
CHANGE MATTERS
Real Estate | Infrastructure | Developers

JV Partner
JAANMALI
BROTHERS

SANKLECHA CONSTRUCTIONS PVT. LTD.

Site Office: Jaanmali Estate, Tapovan Road, Dwarka, Nasik. **M.:** +91 90110 33451 **E.:** sales@sanklecha.in

Corporate Office: 11, City Plaza, 1st Floor, Above Rajmal Lakhichand Jewellers,
Old-Agra Road, Nasik. **Tel.:** +91 253 2501549 **Fax:** +91 253 2501550 **W.:** www.sanklecha.in

Pune Office: 402, Gera Legend, North Main Road, Koregaon Park, Pune 411 001. **Tel.:** +91 20 32933366

MAKIndia.com

CREDITS

Architects
Ar. Hemant Dugad, Nasik.

Landscape Architects
ROOTS DESIGNS, Pune.

RCC and MEP Consultant
Potential Semac Pvt Ltd, Mumbai.

Brand Communication Consultants
MAK Media & Creations Pvt. Ltd., Pune.

DISCLAIMER: This brochure depicts an imaginary concept. The information contained in the brochure and related inserts are indicative. The Developers reserve the right to modify or cancel any plan or amenity, without any notice. This brochure is not a part of any offer or contract.



2 & 3 BHK Scenic Residences
DWARKA, NASIK

A shower of life's blessings

Waterways is a 23 acre extravagant project comprising exclusive 2 & 3 BHK scenic residences, that will enhance your life with the goodness of aquatic bliss. A grand welcome at the atrium is only the beginning of a lifestyle where life flows beautifully. Step into a world full of contentment, move into a home full of comforts and advance into a lifetime of happiness.





A harbour of happiness

Waterways is designed for Nasik dwellers to experience serene life by the waters; where happiness flows at every moment. Lively activities in the lush green surroundings, inviting plantations across beautiful pathways and rejuvenating water bodies at various crossroads makes Waterways the residence of eternal harmony.

Be it the joyful playtime with your kids, the afternoon shopping with your friends, blissful evenings with your family or peaceful nights with your spouse, at Waterways, conveniences are synonymous with everyday living. From round the clock security to intercom connectivity, from picturesque landscaping to refreshing water bodies, from multiple sports activities to an inviting club house, Waterways has left no stone unturned to deliver the perfect living experience for you.

AMENITIES

- Lawn Mounds
- Swimming Pool with Interactive Pool for Children's
- Clubhouse
- External Landscape Features with water bodies
- Several Play Area for Children
- Cricket Pitch
- Basketball Court
- Tennis Court
- Intercom Connectivity
- Jogging Track
- Round the Clock Security
- Smooth Internal Paved Walks
- Skating Rink
- Table Tennis
- Toddlers Zone
- Amphitheatre

A stream of CONVENIENCES





A drizzle of details

We believe god is in the details. Every requirement of a household from the minute they wake until the time they go to bed has been fulfilled with sincere attention and execution. Your home has been crafted with exquisite flooring, built-in with sound electrical fittings and decorated with premium finish doors and walls. Accompanied by technological advances, showered with life's multiple joys and shared with your loved ones, every day at Waterways is a priceless gift.

Drawing, Dining, Bedrooms, Entrance Lobby & Passage

- Floor: Vitrified or equivalent tiles with 3' skirting
- Walls: Gypsum finish or equivalent with 2 coats of OBD paint
- Ceiling: Gypsum finish or equivalent finish with 2 coats of OBD paint

Toilets

- Floor: Ceramic tiles
- Sanitary Ware: Sanitary ware of Jaquar or equivalent quality
- CP fittings, Jaquar or equivalent quality and shower provision for hot & cold water

Electrical

- Concealed conduit wiring with copper conductor
- Socket outlets in adequate numbers as per standard norms
- Power points for geysers in toilets

Kitchen

- Floor: Vitrified tiles or equivalent quality
- Walls: Ceramic tiles up to 2' height above kitchen platform
- Kitchen Platform: Granite platform with stainless steel single bowl sink

Doors & Window

- Door Frame: Hardwood, plywood or equivalent quality
- Door Shutters: Flush doors with both side laminate
- Windows frame and shutter: Powder coated aluminium sliding windows with mosquito net
- Main front door: Fluster door, Laminate, Brass fittings

Plumbing

- Concealed piping
- CP fittings of reputed make

A tide of conveniences



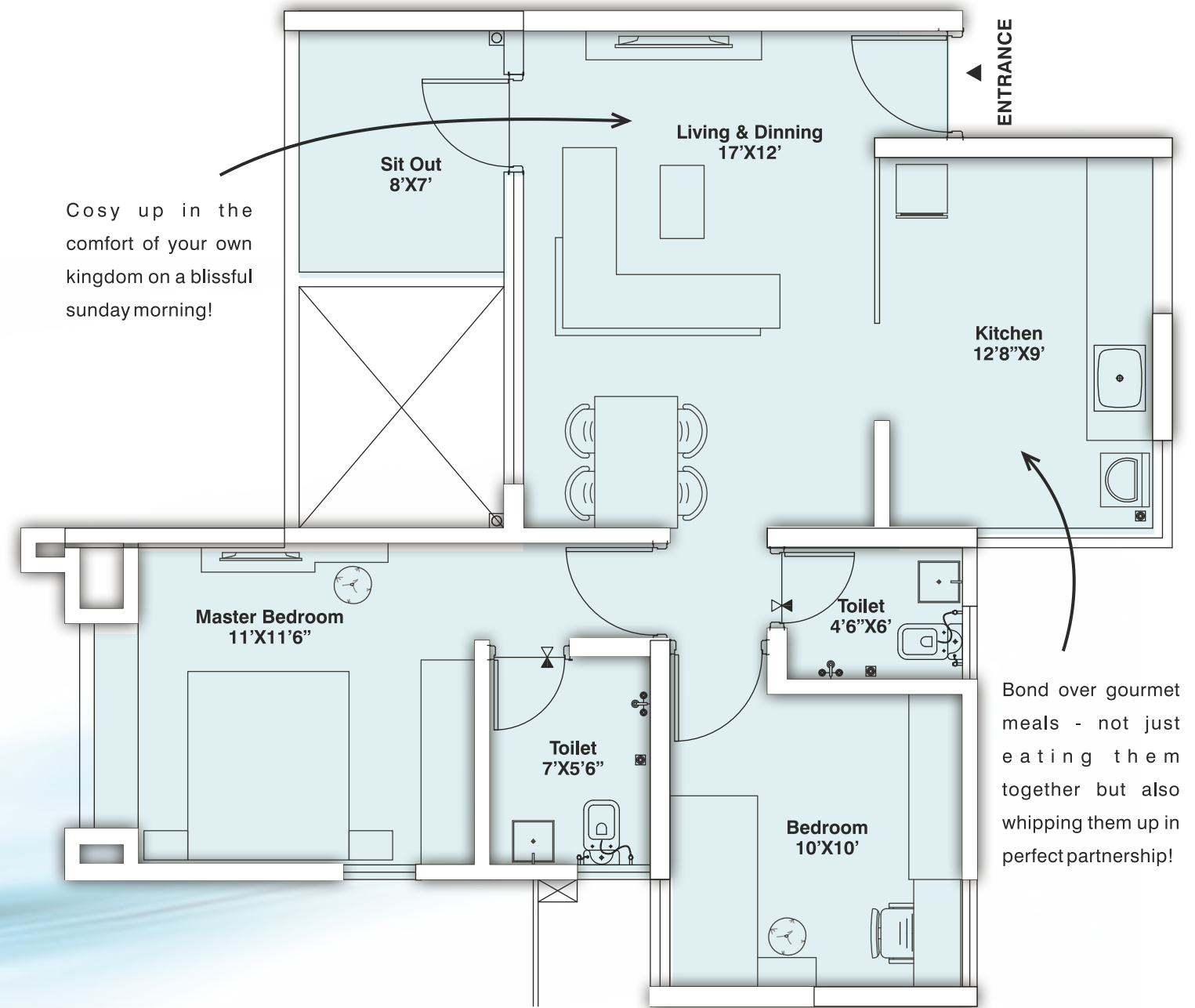
Waterways not only gives you an abode in the lap of Mother Nature, it also gives you a central location for easy accessibility to work and leisure, thus saving precious travel time. A prime location near Nasik's centre; Dwarka – a buzzing and developed area; Waterways overlooks the legendary Godavari river, magnifying the soothing effect of water in your life.

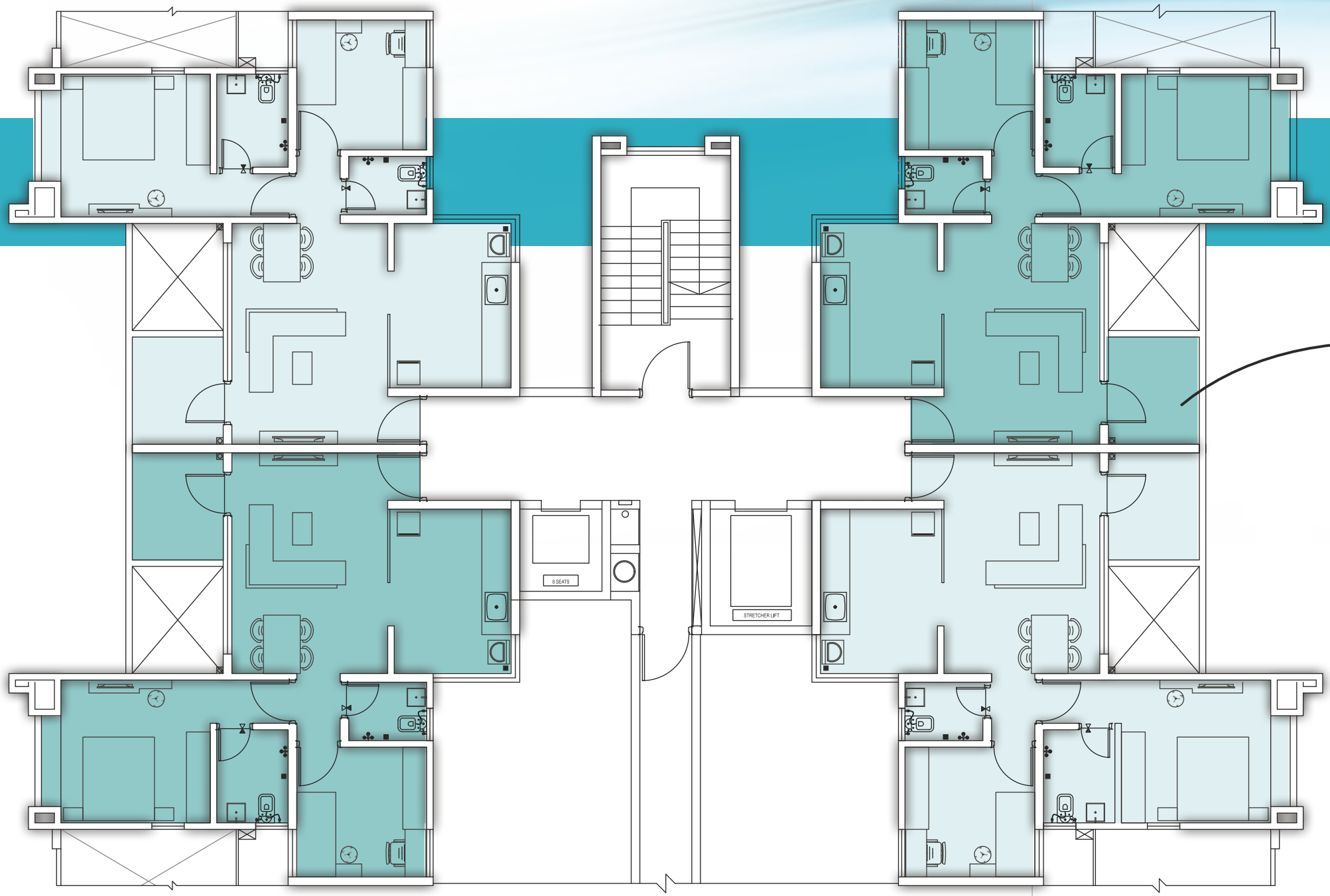
KEY DISTANCES

Paddar International School	0.5
Bank	0.7
Mumbai Agra Road	0.7
Dwarka Circle	1 km
Aurangabad Highway	1 km
Dental College	2 km
Wockhardt Hospital	2.5 km
Panchavati	3 km
K.K.Wagh College of Engineering	4 km
Railway Station	7.4 km
MET Bhujbal Knowledge City	9 km

unit plan

2 BHK Compact



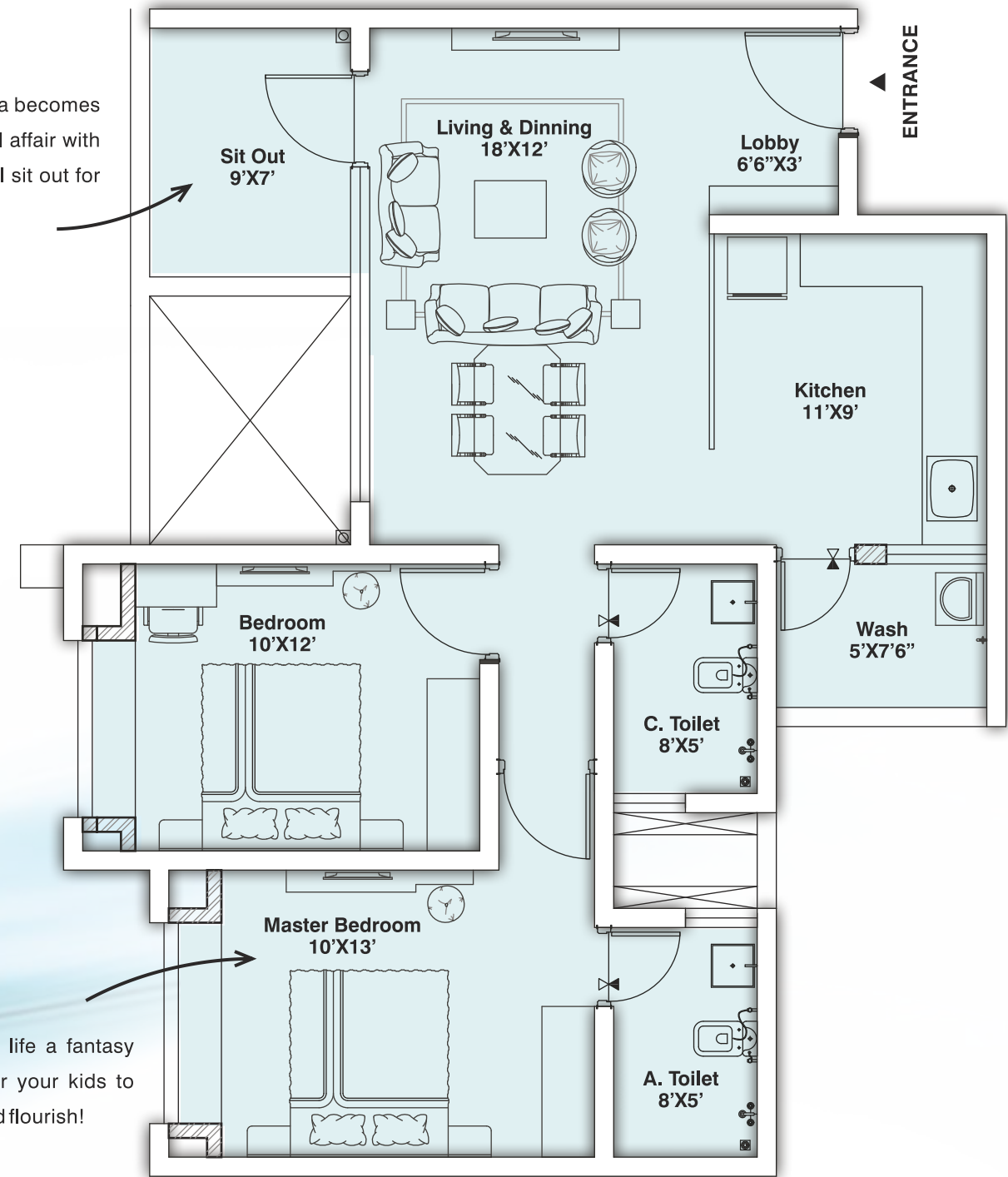


FLOOR PLAN

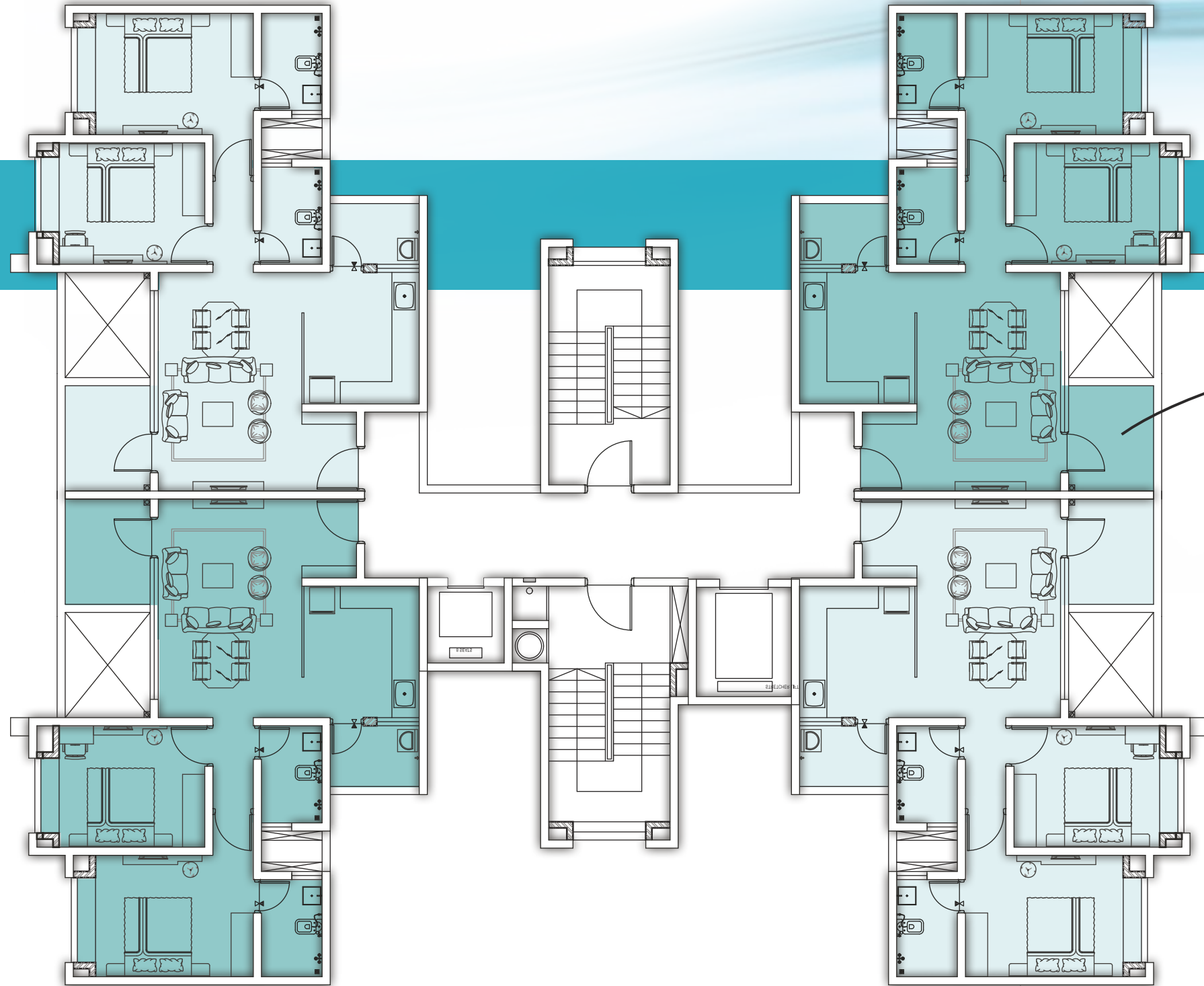
unit plan

2 BHK Large

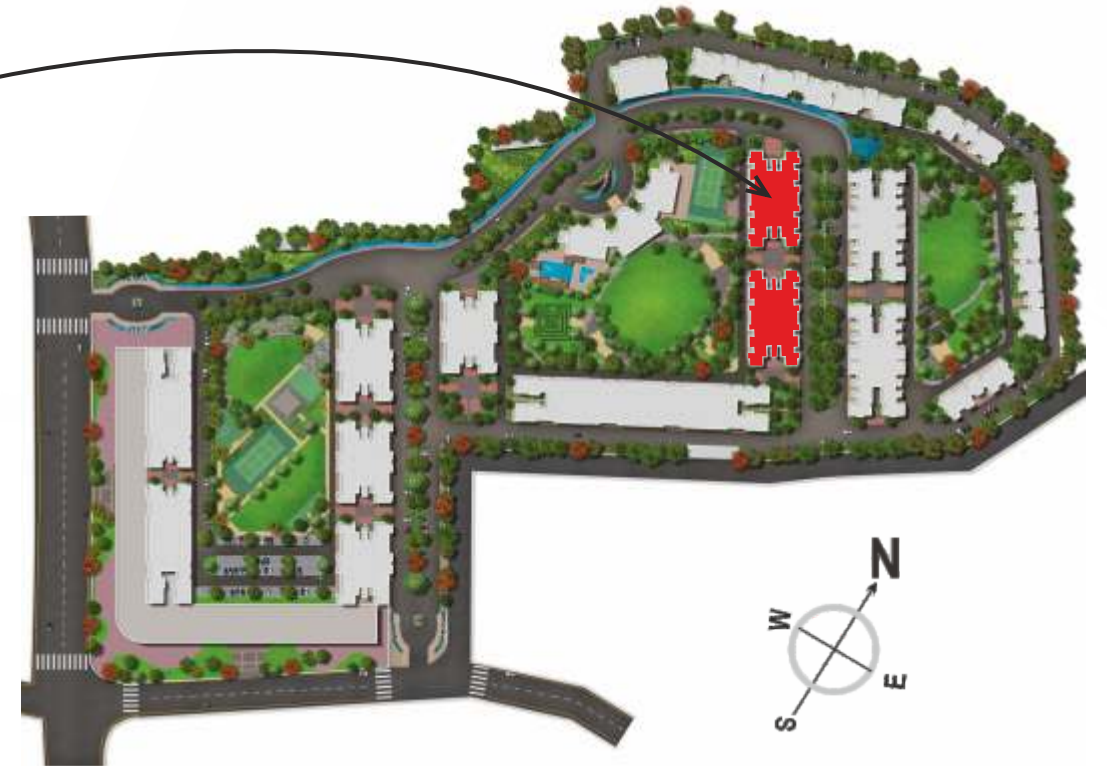
Evening tea becomes a delightful affair with this special sit out for the family!



Bring to life a fantasy world for your kids to frolic and flourish!



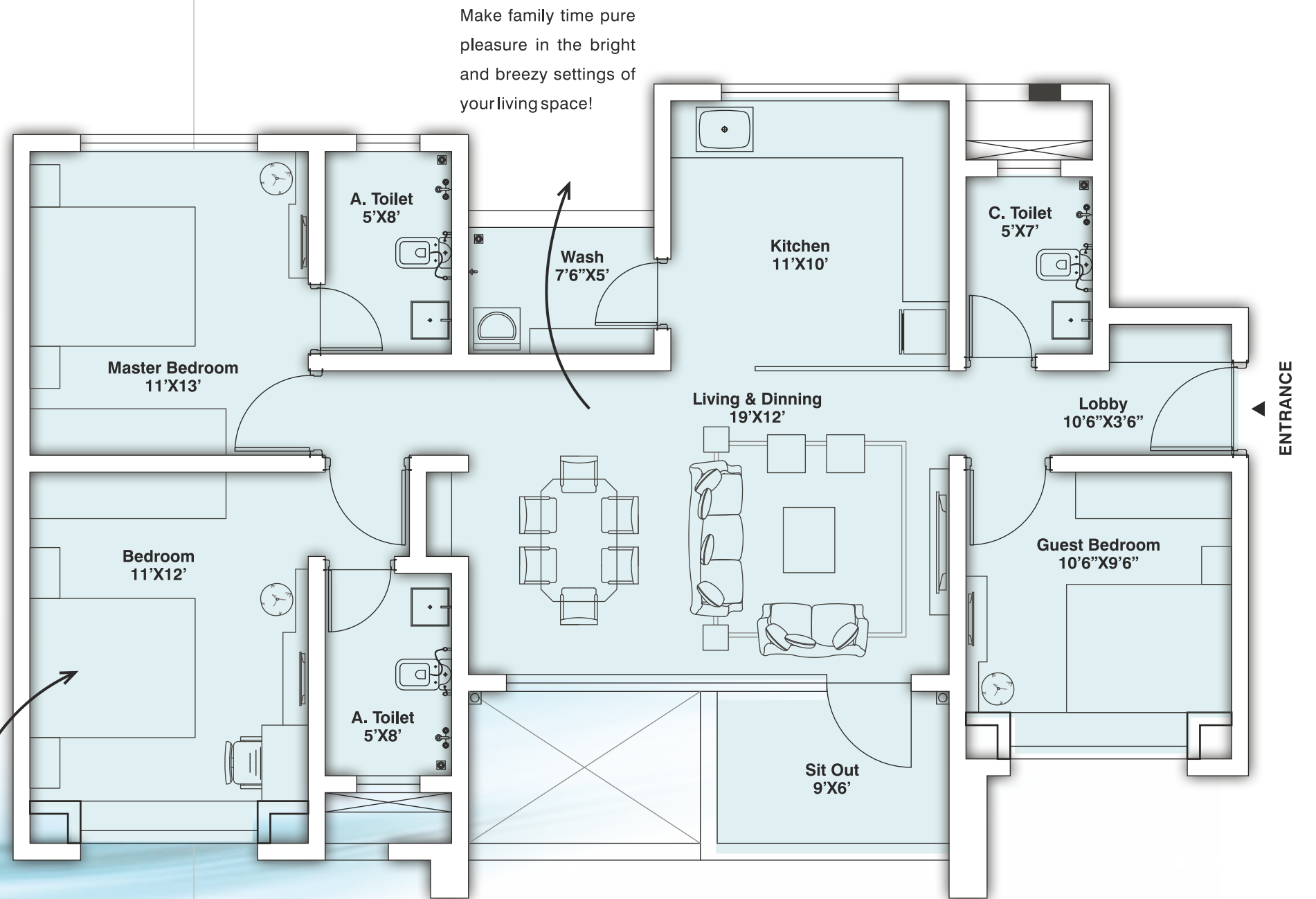
TYPICAL FLOOR PLAN
2 BHK LARGE

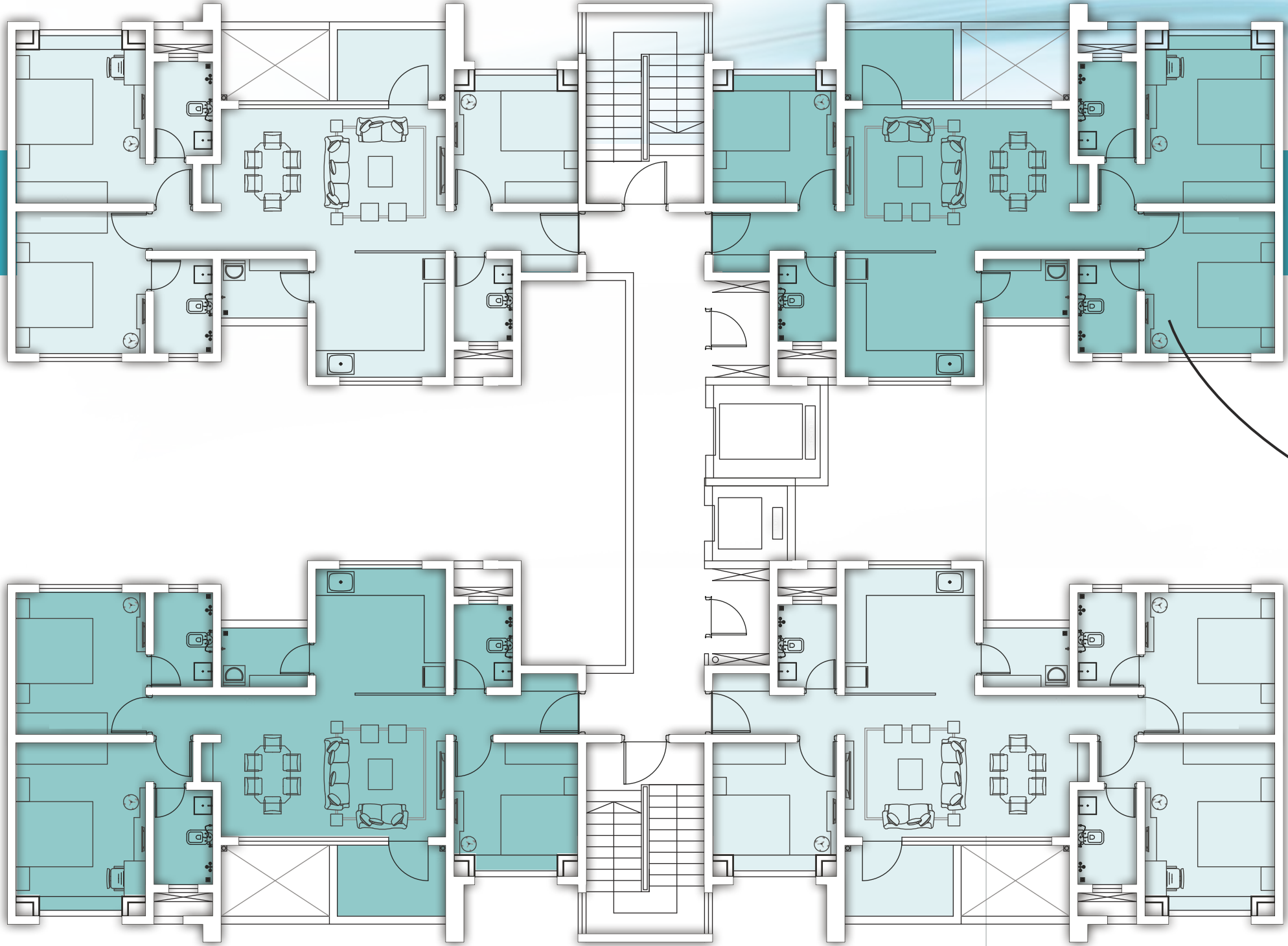


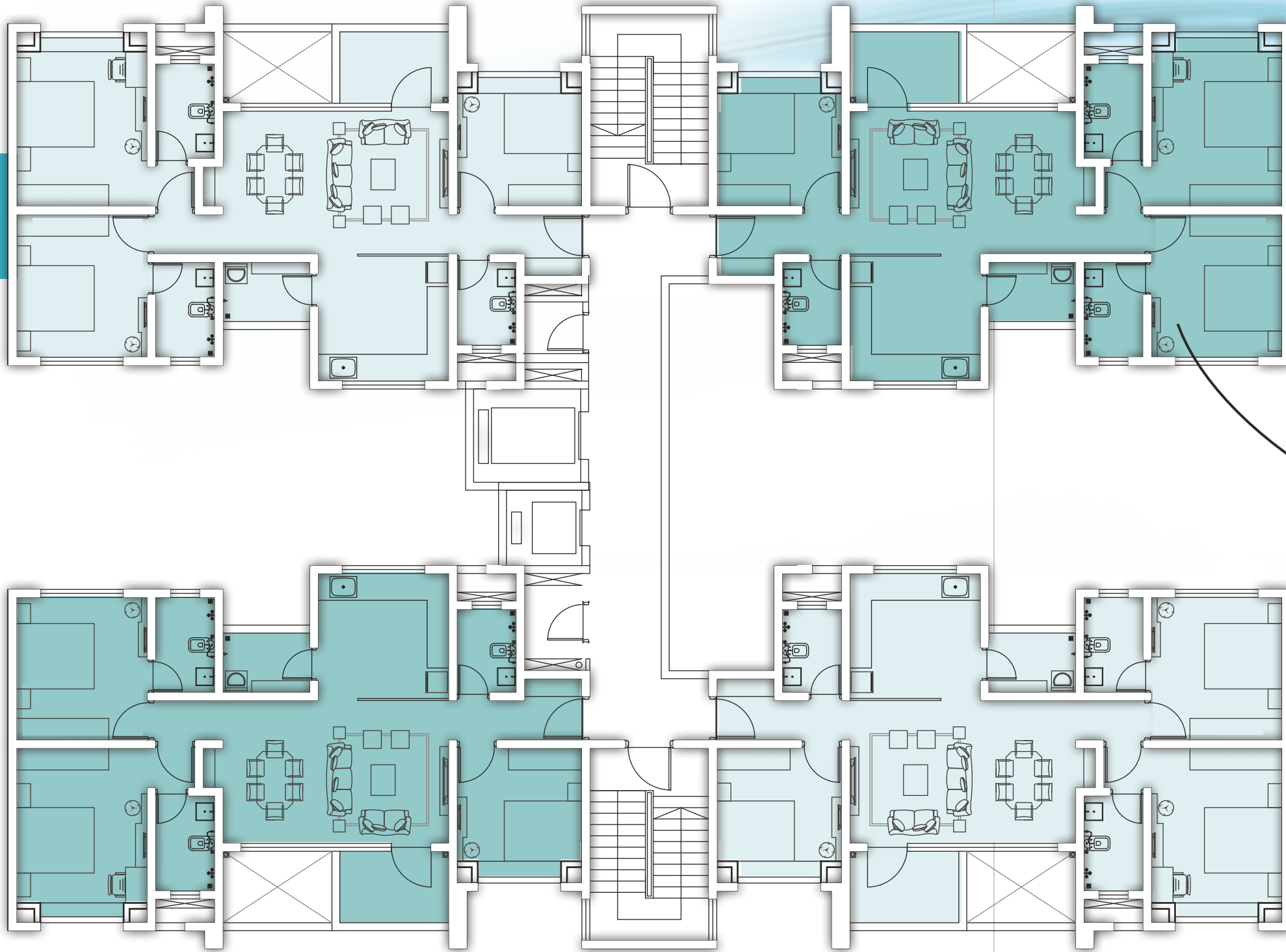
unit plan

3 BHK Compact

Make guests feel at home with the wonderful warmth of a room of their own.







TYPICAL ODD FLOOR PLAN
3 BHK COMPACT





An abundant flow of growth in Nasik

From a predominantly agricultural town and pilgrimage centre, Nasik's evolution began in the late 19th century with the advent of the Mumbai-Delhi railway line. With state-of-the-art infrastructural development, excellent connectivity to major metros, upcoming industries and institutions, favourable climate and an upscale lifestyle, Nasik is now transforming into the perfect city to reside in. Due to its favourable location, climate and accessibility, a number of industries are setting up base in Nasik, leading to tremendous urban development of the city. Nasik is deemed the third most industrialized city of Maharashtra after Mumbai and Pune, mainly due to extensive industrial development. Around 3600 acres of land are being acquired for establishment of New Nasik, also known as CIDCO, near NH-3. The city has become the centre of attraction because of its beautiful surroundings and cool and pleasant climate. The number of citizens in the city is on the increase and so is the development of this city into a Tier II metro. In spite of the tremendous Industrial and IT growth, greenery and pleasant climate make the wine capital of the country an ideal destination to live and an attractive city to invest in.

In the quest to take Nasik to the threshold of global recognition, Sanklecha Constructions Pvt. Ltd., pioneers in infrastructure and real estate, continue to develop innovative landmarks in the city.



The Sanklecha group has been a major player in the real estate industry for over three decades. Established in 1978, as a family conglomerate in Nasik, the group has witnessed success, construction after construction. Seventy-five prestigious projects later, the group is still raring to go places and has an enviable presence in Mumbai and Pune.

Sanklecha group has created homes that have housed over 2,500 happy customers and that itself is a testament to its success. With innovation and a passion for creating the extraordinary, the group firmly believes in transforming the way the world lives.

With increasing urbanisation and ever changing needs of customers, Sanklecha continuously reinvents itself to keep its creations unique, every time. Through innovation, contemporary design, a futuristic perspective, the use of state-of-the-art equipment and superior quality construction material, we are constantly evolving to offer our customers something extraordinary.

THE METROZONE
2, 2.5, 3, 3.5, 4 & 5 BHK Premium Apartments
Indira Nagar Annexe, Nasik

GARDEN COUNTY
2 & 3 BHK Apartments
behind Hotel Jatra, Adgaon, Nasik

THE COMFORT ZONE
1.5 & 2 BHK Apartments
Ambad, Nasik

MANGO WOODS
2 BHK Boutique Apartments
NIBM Annexe, Pune

MANGO ONE
2 & 3 BHK Apartments
Hadapsar, Pune