

# MERAKI

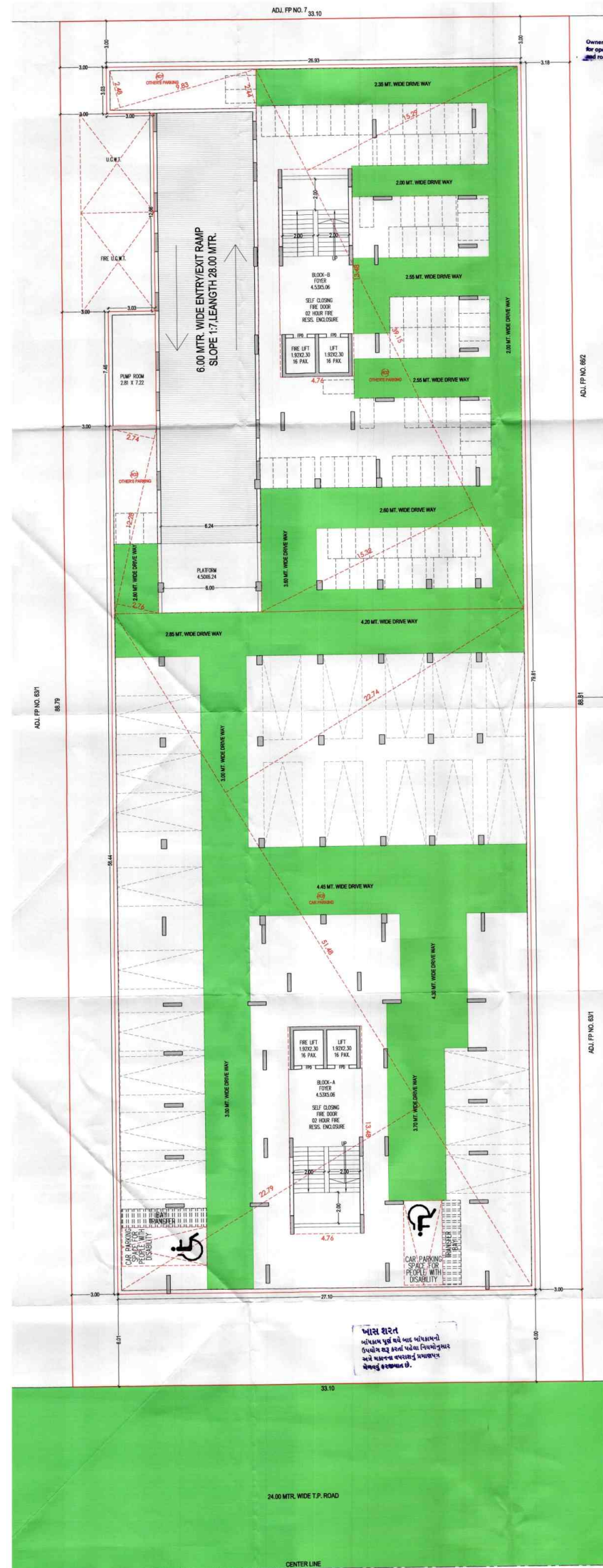


3 b h k s p l e n d i d l i v i n g

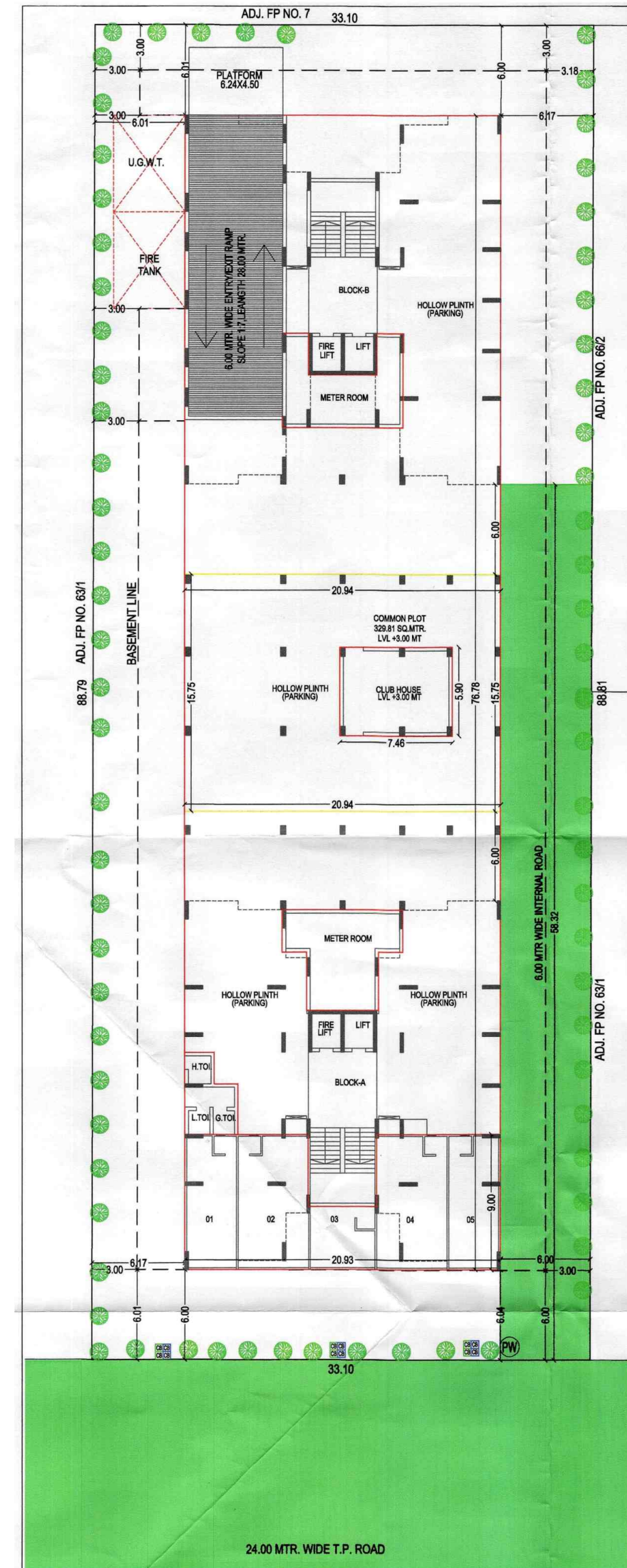




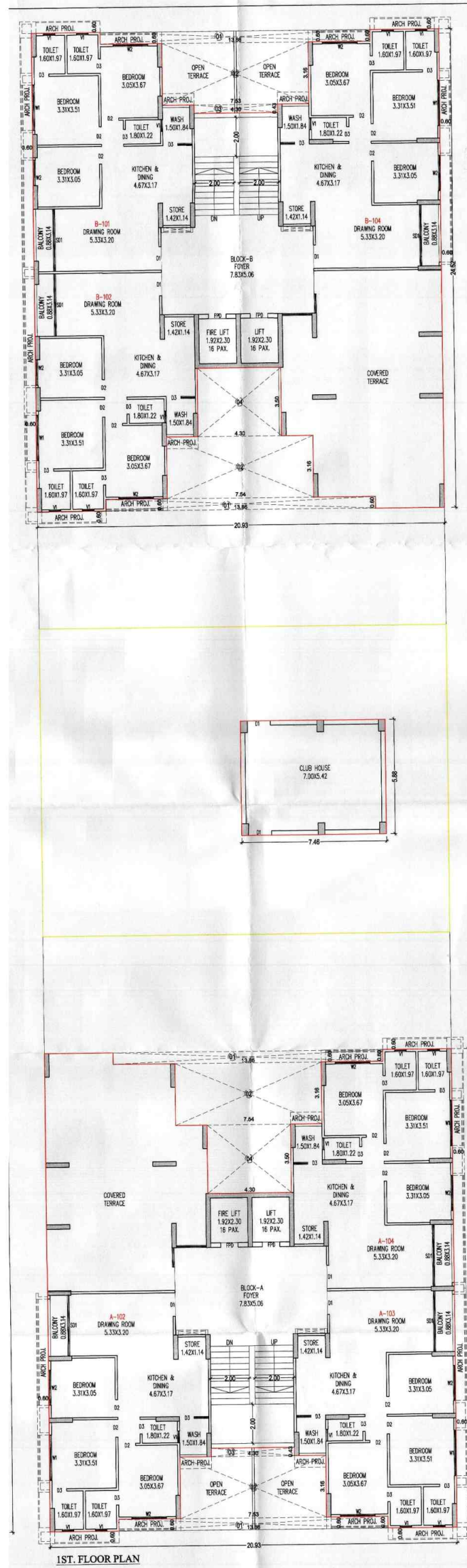
**BASEMENT PLAN**



**GROUND FLOOR PLAN**

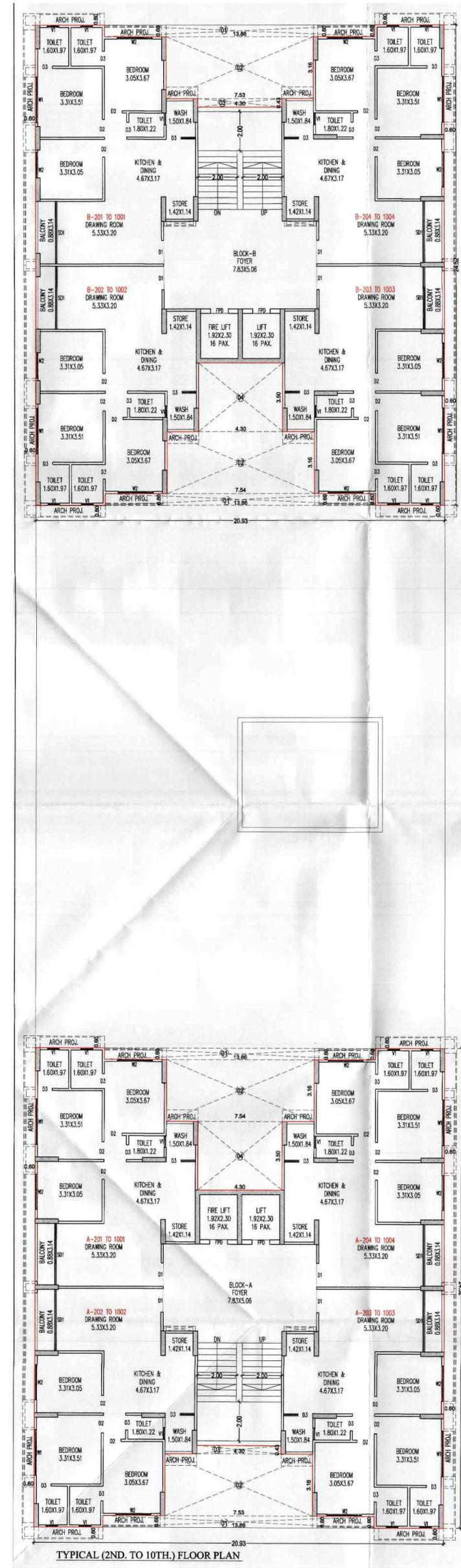


**FIRST FLOOR PLAN**



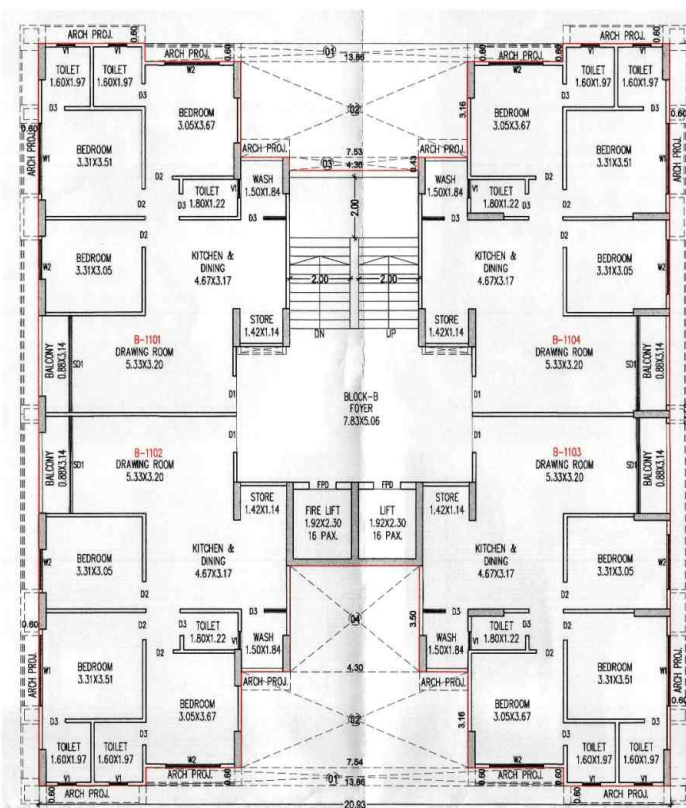
1ST. FLOOR PLAN

**TYPICAL FLOOR PLAN**

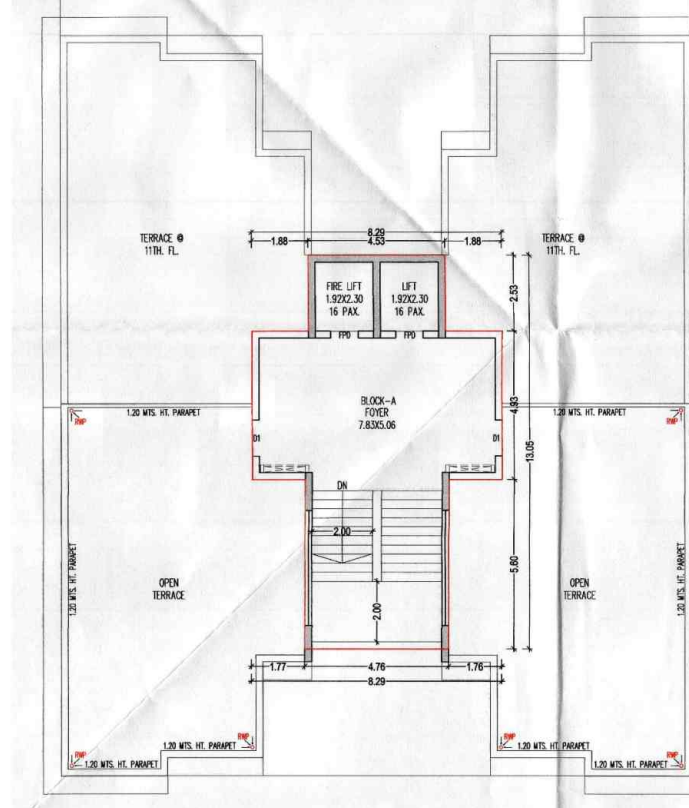
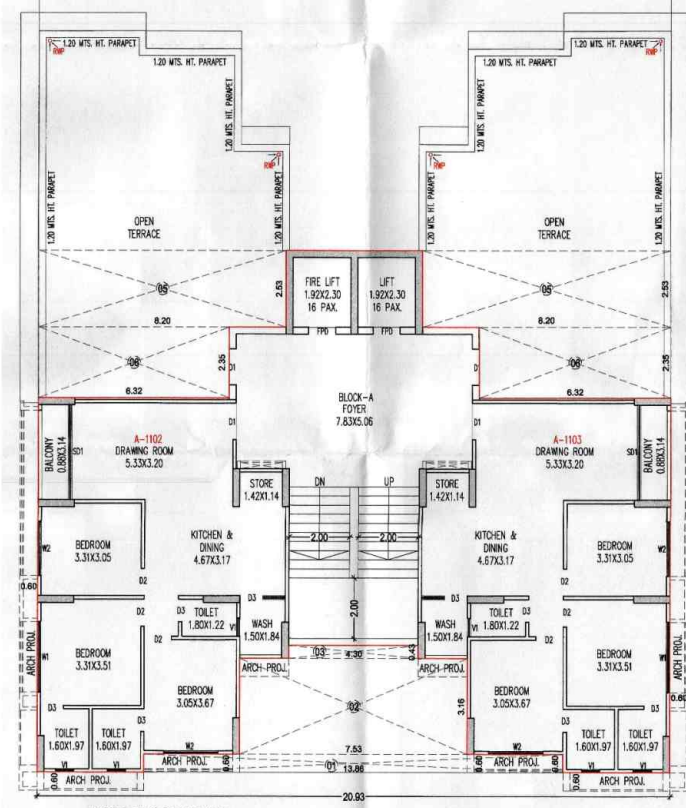
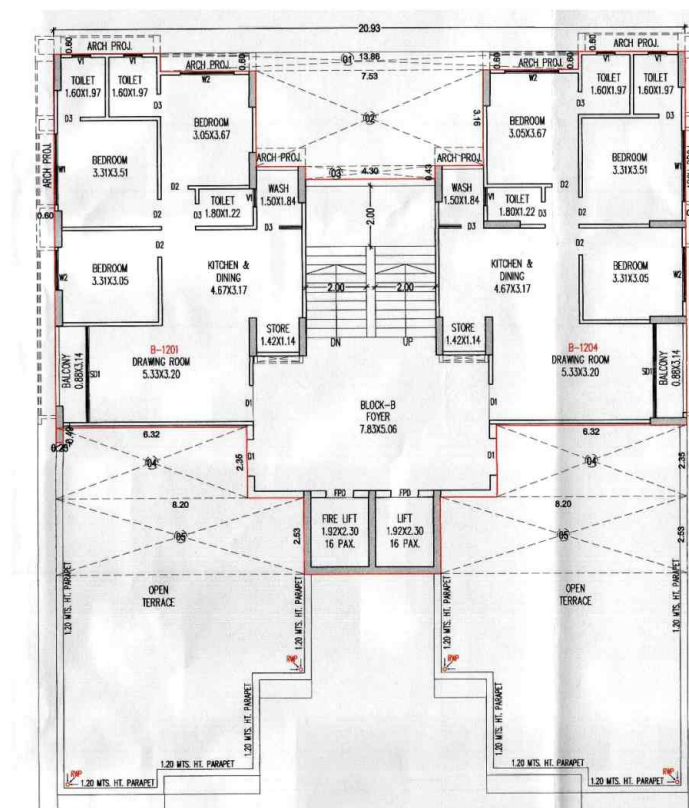


TYPICAL (2ND. TO 10TH.) FLOOR PLAN

**11TH FLOOR PLAN**



**12TH FLOOR PLAN**



11TH FLOOR PLAN

12TH FLOOR PLAN

## SPECIFICATION



**Structure:**  
R.C.C. frame structure



**Flooring:**  
Vitrified tiles in the entire apartment



**Kitchen:**  
Granite top cooking platform with S.S. sink & glazed tiles dado on platform side wall up to lintel level



**Doors / Windows:**  
Decorative wooden main entrance door. All other doors of wooden/marble framed with flushed doors. Fully glazed powder coated aluminum windows



**Toilets:**  
Glazed tiles of leading brand on the floor & dado up to lintel level



**Plaster:**  
Internal mala plaster with putty finish and external double coat sand face plaster with acrylic water proof paint



**Plumbing:**  
Concealed plumbing with center point with premium quality bath fitting & sanitary ware



**Electrification:**  
Concealed copper wiring with AC, TV, Telephone, Computer and adequate points in all the rooms with modular switches. ELCB/MCB in each apartment. Geyser point in all toilets



**Lift:**  
Good quality passenger lift



**Terrace:**  
China mosaic in open terrace for water proofing & heat reduction

**Legal Notes:** • Stamp Duty, Registration Charges, Legal Documentation Charges, Advance Maintenance, Fix Maintenance Charges, GMC/GUDA Charges and GEB Charges including cable and sub-station cost shall be borne by the purchaser. • GST+ any additional charges, taxes, cess or duties levied by the government / local authorities prior, during or after the completion of the scheme will be borne by the purchaser. • In the interest of the continuous developments in design and quality of construction, the developer reserves all rights to make suitable changes in the scheme and all the purchasers shall abide by such changes. • Changes / Alteration of any nature, including the elevations, exterior color scheme of the units or any other change affecting the overall design concept and outlook of the scheme are strictly not permitted during or after the completion of the scheme. • The brochure is intended only to convey the essential design and technical features of the scheme and shall not be construed to form part of the legal document. Agreement for sale shall be final and binding to the purchaser. • All elements, objects, treatments, materials, equipments and color schemes shown are artist's impressions. Actuals may be different as per architect's designs. • All dimensions shown here are unfinished to unfinished wall and of the longest measure of the area

## LOCATION MAP



**SITE :** Meraki 86, Opp. Vinte Villas, Nr. Janvi Farm, B/h Pramukh Park Bungalows, PDP Road, Raysan, Gandhinagar - 382007

99092 54546 , 99252 42808 , 98793 21396

**RERA Website :** <https://gujrera.gujarat.gov.in>

**RERA Registration No. :**

**MERAKI**  
3 bhk splendid living

Architect :



Structure : **Alfa Consultancy Services**

Developer



[www.eyecondesign.in](http://www.eyecondesign.in)