

A TROPICAL
EXPERIENCE



SIDDHRAJ | Z⁺


SIDDHRAJ INFRA PVT LTD.
(C. R. P. Associates)

6 Rooms Premium Living





A TROPICAL
EXPERIENCE
6 Rooms Premium Living

SIDDHRAJ | Z⁺



at entrance

INTRODUCTION

The project has been designed to provide a tropical experience Gandhinagar.

The Concept of living is inspired by Bali Islands in Indonesia which has a major influence of ancient Hindu elements. The tropical architecture of Bali involves perfect harmony of the building with the environment, where every component of design blends seamlessly with the surroundings!

When nature lies at your disposal you have every reason to come home early. A unique combination of luxurious living, contemporary lifestyle with tranquil and serene surrounding is a rare treat.

The project has been devised taking in consideration the basic concepts of artistic Bali architecture. The architecture of Siddharaj Z+ creates a co-ordination between the three realms of the cosmos i.e. the land, the water and the sky. Experience the beautiful infusion of nature with the structure and see them amalgamate in synchronization.

Visit once to immerse in this glorifying 'tropical experience' right in the centre of enterprise hub Gandhinagar.



Siddhraj Z+, the name given to the scheme reflects our vision of upholding the values of our tradition, blending it sophisticatedly with contemporary style of living.

SIDDHRAJ | Z+

6 Rooms Premium Living



Entrance Gate

The word symbolizes an identity which conserves the secret of universe inside its very soul.

It placates the senses and promotes a feeling of concord with the nature. It directs the mind to get blended in the divinity of the soul.

Come taste the grandeur of nature with all its divinity, and get soaked in the after-effects!

The philosophy is to endorse family oriented living with the warmth of togetherness and flavors of community living.

Spaces are also provided for individual soul searching and for spending some moments snuggled in the lap of greenery.



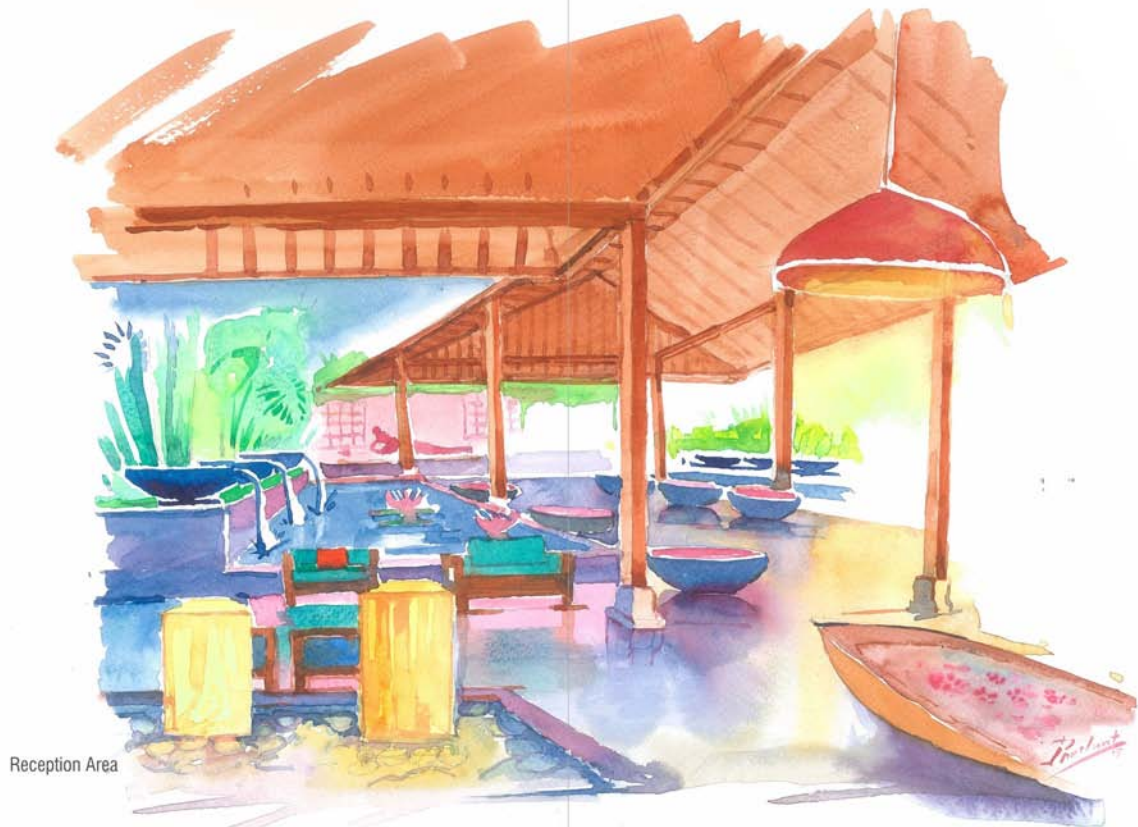




Sleeping Buddha

Landscaping has been planned by reputed landscape architect who has roped in the essentials of sacred elements of three realms of nature as depicted in Bali architecture.

Greenery is so crafted as to blend with the surrounding like water or land.



Reception Area

A definition of excellence and fine living coincides with the amenities SiddhrajZ+ has to offer.

Here serenity, beauty and luxury unfold gradually, caressing your senses towards positive transformation.

Stretch your hands and feel the magnanimity of god and oneness with his creation which amalgamates effortlessly with ultramodern luxury and splendid landscaping.



Reception



Swimming Pool and Pond

Let your mind float along with the fluidity of tranquility in the crystal clear water of strategically carved out pool.

The greenery surrounding the pool with trees and lush green lawn will give you a feeling of a tropical country side.

Take time to unwind on the relaxing chairs placed along the sides of the pool and listen to the tunes of bird singing in sync with your heart.

Take a dip in the calm water, to rejuvenate and revitalize. Drench in a quick spell of rain on the pool side if you so desire, under the open shower, to get a sense of being one with the nature.

Even if you want to experience a comfortable chat with your loved ones with pool as the view you have a beautiful hut shaped area giving you complete privacy from the world.

Quenching the thirst of life requires accurate assimilation of quintessential elements, as of lush green landscaping, studded with comfort living.



SIDDHRAJ | Z+

A TROPICAL EXPERIENCE



What are your ideas for a celeb lifestyle? Enter Siddhraj Z+ to find even more! Live life without limits and leave your imaginations unbridled.





Just sitting and admiring also becomes an art when you choose to relax in aesthetically designed gazebo.

A sitting area with aesthetic color combination and a glimpse of Bali, the wonderful island.....

What else do you want!



Senior Citizen Sit Outs

Imbibe the completeness of your being when you become one with nature.

Feel this union of spiritualism with comforts of the world as your step towards a lifestyle beyond your imagination.

Garden is not just a patch of greenery among the concrete jungle but should radiate a complete accord with the physical duality of nature.

Zen in Buddhism points towards spiritual advancement through meditation and we have the Zen garden designed to detach you from the world and adhere you to yourself.



Zen Garden



Explore the poet in you by getting inspirations from the greenery, the water, the sunshine, the fresh air and most importantly your home...

Tree Avenue





Barbecue and Pizzeria



Café Lounge

SITE AND UNIT PLANS

Arial view



Site plan Ground floor



- 1 SECURITY ROOM
- 2 WAITING LOUNGE
- 3 SENIOR CITIZEN SEATING
- 4 LIBRARY
- 5 PLAY COURT
- 6 BANQUET HALL (A,C)
- 6A BANQUET HALL (OPEN)
- 7 CHESS GARDEN
- 8 BUSINESS CENTER
- 9 DUTY MANAGER OFFICE
- 10 RECEPTION
- 11 ZEN GARDEN
- 12 HOME THEATER
- 13 TABLE TENNIS ROOM
- 14 CHESS, CARRIOM, CARDS ROOM
- 15 CRICKET PITCH
- 16 CAFE / KITCHEN
- 17 COURTYARD / GARDEN
- 18 YOGA HALL
- 19 DRIVER'S LOUNGE
- 20 SPA / JACUZZI
- 21 AMPHITHEATER
- 22 GAZEBO
- 23 POOL CAFE
- 24 SWIMMING POOL
- 25 CHANGING ROOM
- 26 DOUBLE HT SQUASH
- 27 DOUBLE HT LOUNGE
- 28 DOUBLE HT GYM
- 29 OUTDOOR PLAYGROUND
- 30 KIDS PLAY AREA
- 31 BARBEQUE / PIZZERIA
- 32 LILY POND
- 33 WATER BODY

12 M WIDE ROAD

30 M WIDE ROAD



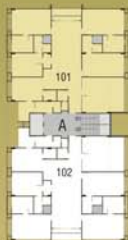
Typical plan



12 M WIDE ROAD

30 M WIDE ROAD

Typical Unit plan





SUCCESSFULLY COMPLETED PROJECTS

SUCCESSFULLY COMPLETED RESIDENTIAL PROJECT: 2010



redefining **luxury living**

Site: Siddhraj Greens, Beside Urja Nagar, Near Water Tank(Chharedi), Pethapur Road

SIDDHRAJ GREENS is secure and integrated residential community of artistically designed bungalows amid manicured greenery. The eco friendly environment and family oriented amenities of this development make it one of the most desirable residential addresses in the city.

SIDDHRAJ GREENS include some of the latest finishes and best of quality in its class.



ACTUAL SITE PHOTOGRAPHS





SUCCESSFULLY COMPLETED RESIDENTIAL PROJECT, 2011
3 BHK PREMIUM APARTMENTS

A contemporary apartment scheme that meets all high standards of living. Landscaped ground floor with enhancing amenities like play areas, pools and environment friendly living spaces. Designed with architectural finesse, the homes have five spacious rooms.

Homes with breath taking blend of design and comfort and eye catching open spaces.

An accomplished
life style

SIDDHRAJ | ZOLD 

SITE: NR. INFOCITY & SARGASAN CROSS ROADS, ON S.G.HIGHWAY, GANDHINAGAR



ACTUAL SITE PHOTOGRAPHS



REDEFINED WORK ENVIRONMENT



SHOWROOMS | OFFICES

SUCCESSFULLY COMPLETED COMMERCIAL PROJECT: 2013

SIDDHRAJ ZAVOD is a business park consisting of high end showrooms, corporate houses & pure office spaces. Also SIDDHRAJ ZAVOD is work place where work is made enjoyable, it's designed IN such a way that provides you comfort & luxury of working with innovative uniqueness & latest services.

SIDDHRAJ | ZAVOD

SITE: NR. INFOCITY & SARGASAN CROSS ROADS, ON S.G HIGHWAY, GANDHINAGAR



SUCCESSFULLY COMPLETED COMMERCIAL PROJECT: 2014

SIDDHRAJ ZORI located on 12.0 mts service road on S. G. Highway and Showrooms for best commercial use on the road side and to create a quieter environ for offices.

SIDDHRAJ ZORI incorporates advanced systems necessary to meet the differing demands of office and shopping users.

SITE ADDRESS: NR. SARGASAN CROSS ROADS, S.G.HIGHWAY, GANDHINAGAR





SIDDHRAJ INFRA PVT LTD.

(C. R. P. Associates)

Site Office:

Siddhraj Z+, Nr. Infocity Junior School,
Opp. Prasang Party Plot, Kh-0 to Reliance Circle Road,
Sargasan, Gandhinagar 382421

Office:

201, Siddhraj Zavod, Nr. Infocity & Sargasan Cross Roads,
S. G. Highway, Gandhinagar
Call: 079 232 49792

Mail: siddhrajinfrapvtltd@gmail.com

Web: www.siddhrajdevelopers.com

DISCLAIMER:

The information contained in this brochure is subject to change as may be approved by the authorities and cannot form part of any offer or contract. All plans are subject to any amendments approved by the relevant authorities. Floor areas are approximate and subject to final survey. Illustrations in this brochure are artists impressions and serve only to give an approximate idea of the project. While every reasonable care has been taken in providing this information, its owners cannot be held responsible for any inaccuracy. 6th and 7th floor are future development and subject to Govt. approval. Virtual Interior space images are for reference use only.

