



GPS GROUP
SINCE 1984

Meena
CRYSTAL
Kalaberia , Bishnupur , Rajarhat (Chowmatha)



OFFICE ADDRESS

Dwarka Vedmani
AD - 169, Salt Lake City
Sec - I, Kolkata - 700064

CALL FOR ENQUIRY

98741 52870, 98362 14411, 93301 18601

W: www.gpsgroup.co.in **E:** sales@gpsgroup.co.in

Phase 1 RERA : WBRERA/P/NOR/2024/002116 | www.rera.wb.gov.in
Phase 2 RERA :

DISCLAIMER: This is not a legal document. The plans and photographs are conceptual and subject to change. The actual product shall vary according to the sole discretion of the developer. No claims shall be entertained by the developer depending on this material. Though the contents of the brochure have been compiled with the intention to provide information to the best of our knowledge, there may be some changes from time to time which may not reflect on the brochure. While enough care is taken by the developer to ensure that the information on the brochure is up to date and accurate, the users are advised to verify designs, plans, specifications, facilities, features, etc. With our team.

Where Life Shines With Clarity...

Founder's Desk

Our Company

Founded in 1984 The GPS Group is one of the largest, most innovative, creative and forward thinking real estate Company in Kolkata. The core of our business philosophy is a commitment to extraordinary service, honesty & clear communication.

Our History

We launched as GM Group in 1984 and after 40+ years in the industry, we opened its second full-service office as GPS Group in Dwarka Vedmani, AD-169, Salt Lake City, Sec-1, Kolkata-700064, in order to better serve our clients.

Key Personnel

Mr. G.P. Gupta, belongs to a reputed business family, started career in real estate in 1984 and constructed many multistoried residential & commercial building complex over the years. He is the first developer in Kestopur

Mr. Sanjay Gupta, has 30+ years of experience in the engineering and construction industry. He joined as director with responsibility to business development and operations coordination. His experience encompasses all phases of project delivery including project manager, site management, project controls and estimating.

Our Staff

Above all of this-the offices, the technology, our history would be nothing without our people. At the core of every successful real estate transaction they are the key persons who bring it all together. Our team is trained and they bring with them a wealth of experience and knowledge - not just about real estate, but about life in general. Our staffs are passionate about what they do, and they take their jobs seriously. At the GPS Group, we go the extra mile to make our customers happy. We are not only satisfying our customers, we delight them.



SANJAY GUPTA

G. P. GUPTA

FEW COMPLETED PROJECTS



Meena Ganga



Meena Residency



Meena Residency II



Meena Sangam



Meena Siddhi



Meena Wood



Meena Elegant



Meena Florence



Meena Sunrise



Meena Avalon



Meena Graciya



Meena Aurum



Meena Aurum II



Meena Fortuna



Meena Fortuna II



Meena Aurum III



Meena Aurum Gold



Meena Pride



Meena Suncity



Meena Maple



Meena Crystal



Meena Bliss



Meena Tulip



Meena Rose



Meena Vedica



Meena Sapphire



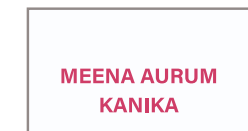
Meena AURA



Meena Aastha



Meena Exotica



MEENA AURUM KANIKA

CURRENT PROJECT

COMING PROJECTS



Meena Harmony



Meena Solitaire



Meena Aphrodite



Meena Heritage



Meena Genesis



Meena Ozone



MEENA OASIS



Meena Elanza



Meena Mirabella






MEENA DIVINE

Location Map



Location Advantages



	Metro station :	5.5 Km
	Bidhan Nagar Station :	13 Km
	Tata Medical :	7.0 Km
	Neotia Hospita :	7.0 km
	OHIO Hospital :	7.0 Km
	Chanakya Hospital :	7.0 Km
	Manipal Hospital :	14 Km
	Apollo Hospital :	15 Km
	Axis Mall :	11 Km
	City Centre II :	6 Km

	VIP Road :	7.0 Km
	Hariyana International School :	0.2 Km
	National School :	0.5 km
	Derozio College :	4.0 Km
	DPS New Town :	7.0 Km
	Techno India College :	7.0 Km
	Narayana School :	8.0 Km
	St. Xavier's University :	13 Km
	Eco Park :	6.0 Km
	Wax Museum :	6.0 km
	Air Craft Park :	7.0 Km
	Air Port :	9.0 Km



Meena
CRYSTAL
Day View



Meena
CRYSTAL

Night View



Meena
CRYSTAL
Aerial View

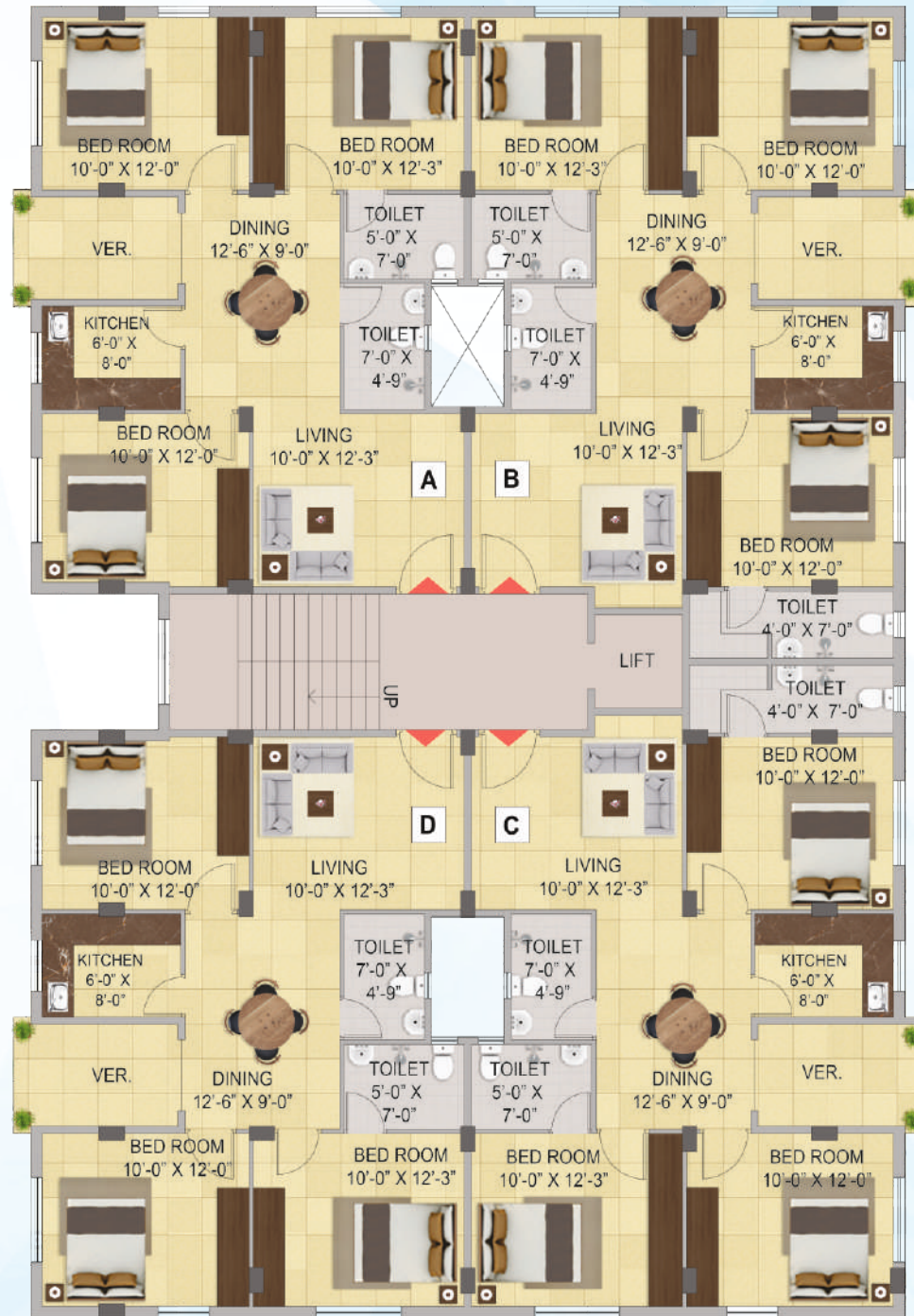


Master Layout Plan

Meena
CRYSTAL



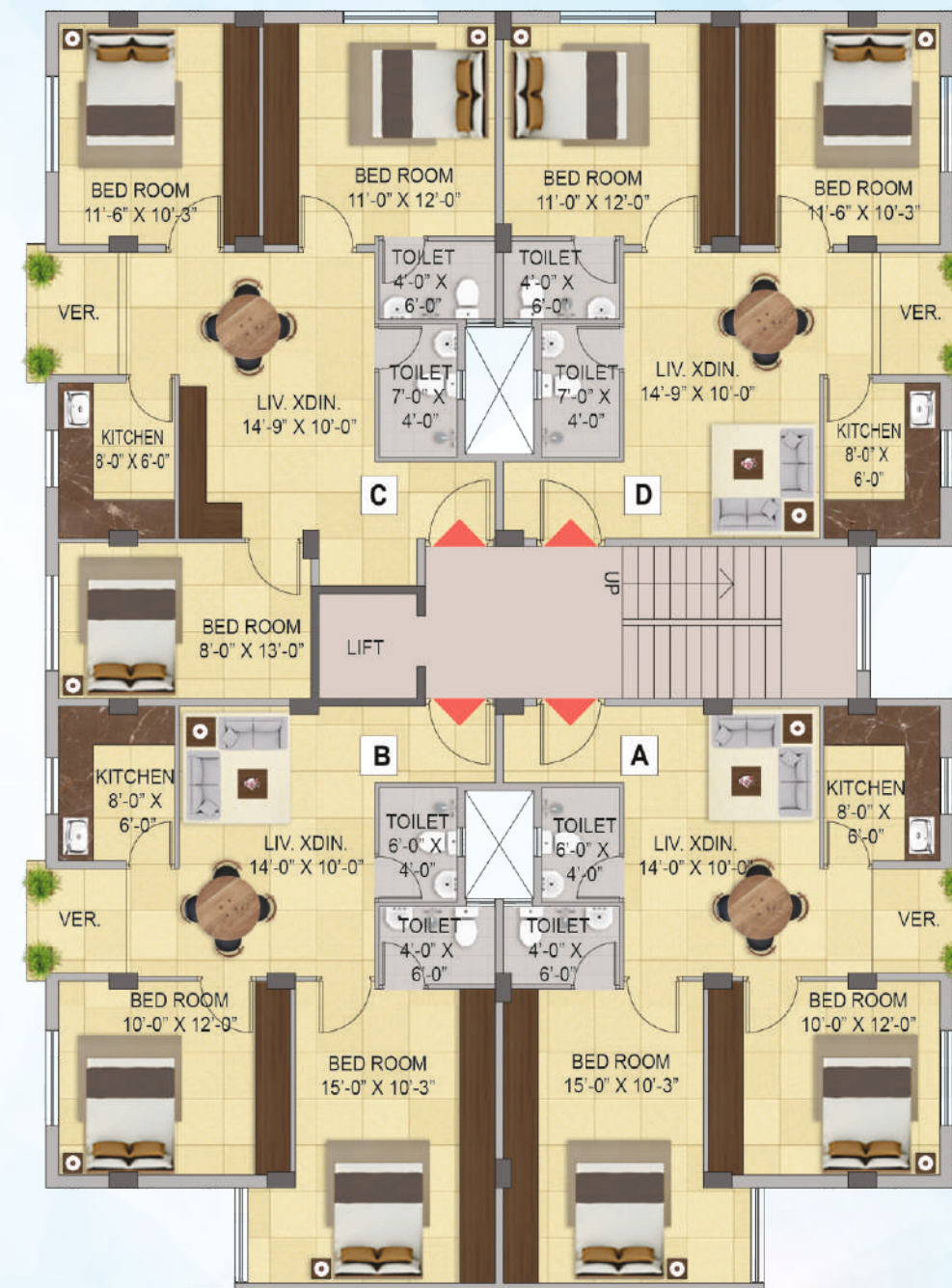
Block - A



BLOCK 'A'				
Type	Carpet Area (Sq. Ft.)	Covered Area (Sq. Ft.)	Super Built Up (Sq. Ft.)	No. of Rooms
A	730	850	1152	3 BHK
B	788	907	1229	3 BHK
C	788	907	1229	3 BHK
D	730	850	1152	3 BHK



Block - B



BLOCK 'B'				
Type	Carpet Area (Sq. Ft.)	Covered Area (Sq. Ft.)	Super Built Up (Sq. Ft.)	No. of Rooms
A	583	654	902	2 BHK
B	583	654	902	2 BHK
C	681	767	1056	3 BHK
D	560	639	881	2 BHK



Block - C



BLOCK 'C'				
Type	Carpet Area (Sq. Ft.)	Covered Area (Sq. Ft.)	Super Built Up (Sq. Ft.)	No. of Rooms
A	560	639	881	2 BHK
B	681	767	1056	3 BHK
C	583	654	902	2 BHK
D	583	654	902	2 BHK



Block - D



BLOCK 'D'				
Type	Carpet Area (Sq. Ft.)	Covered Area (Sq. Ft.)	Super Built Up (Sq. Ft.)	No. of Rooms
A	730	850	1152	3 BHK
B	788	907	1229	3 BHK
C	788	907	1229	3 BHK
D	730	850	1152	3 BHK





Block - E



BLOCK ' E '				
Type	Carpet Area (Sq. Ft.)	Covered Area (Sq. Ft.)	Super Built Up (Sq. Ft.)	No. of Rooms
A	517	603	851	2 BHK
B	518	603	851	2 BHK
C	687	784	1104	3 BHK
D	518	603	851	2 BHK
E	435	516	730	2 BHK

Block - F



BLOCK ' F '				
Type	Carpet Area (Sq. Ft.)	Covered Area (Sq. Ft.)	Super Built Up (Sq. Ft.)	No. of Rooms
A	525	608	878	2 BHK
B	550	660	952	2 BHK
C	524	623	898	2 BHK
D	525	610	880	2 BHK



Block - G



BLOCK ' G '				
Type	Carpet Area (Sq. Ft.)	Covered Area (Sq. Ft.)	Super Built Up (Sq. Ft.)	No. of Rooms
A	715	833	1153	3 BHK
B	736	848	1173	3 BHK
C	706	808	1117	3 BHK
D	518	593	822	2 BHK
E	518	602	835	2 BHK



Block - H



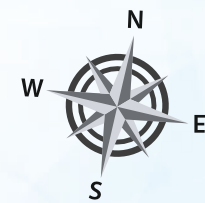
BLOCK ' H '				
Type	Carpet Area (Sq. Ft.)	Covered Area (Sq. Ft.)	Super Built Up (Sq. Ft.)	No. of Rooms
A	778	889	1218	3 BHK
B	774	892	1222	3 BHK
C	567	650	893	2 BHK
D	775	881	1207	3 BHK
E	794	904	1238	3 BHK
F	558	638	876	2 BHK



Block - I



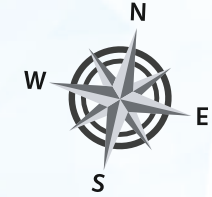
BLOCK 'I'				
Type	Carpet Area (Sq. Ft.)	Covered Area (Sq. Ft.)	Super Built Up (Sq. Ft.)	No. of Rooms
A	715	833	1142	3 BHK
B	570	675	927	2 BHK
C	755	856	1173	3 BHK
D	685	816	1119	3 BHK
E	512	597	820	2 BHK



Block - J



BLOCK 'J'				
Type	Carpet Area (Sq. Ft.)	Covered Area (Sq. Ft.)	Super Built Up (Sq. Ft.)	No. of Rooms
A	665	755	1036	3 BHK
B	824	924	1266	3 BHK
C	521	598	822	2 BHK
D	784	879	1204	3 BHK
E	512	588	808	2 BHK



Specification

- ✔ STRUCTURE
 - ✔ RCC frame structure
 - ✔ Finished with POP
 - ✔ Blending with weather shield paints & decorative finish.
- ✔ INTERNAL WALL
EXTERNAL WALL
 - ✔ Living, dining & all bedrooms quality vitrified 2ft. x 2ft. tiles.
 - ✔ Granite counter with stainless steel sink.
 - ✔ Glazed tiles upto 2ft. above the working platform.
 - ✔ Anti skid ceramic tiles.
 - ✔ Anti skid ceramic tiles.
 - ✔ Ceramic tiles upto 6 feet.
 - ✔ Elegant CP fittings & sanitary fittings.
- ✔ TOILETS
 - ✔ AC points in master bedroom.
 - ✔ Superior quality flush doors in all rooms.
 - ✔ Main door with night latch & magic eye.
 - ✔ Provision for split AC point in master bedroom.
 - ✔ Sufficient electrical points in living rooms & telephone socket provision.
 - ✔ Washing machine point.
 - ✔ Modular switches.
 - ✔ Intercom system.
- ✔ WINDOW & DOOR
 - ✔ Spacious stair case finished with marble.
- ✔ ELECTRICAL
- ✔ STAIRCASE & LOBBY





Amenities

- ✓ Fully AC Community Hall
- ✓ Intercom
- ✓ Rooftop Swimming Pool
- ✓ Rooftop Kid's Play Area
- ✓ Rooftop Gymnasium
- ✓ Rooftop Garden
- ✓ 24 x 7 CCTV Surveillance
- ✓ 24 x 7 Power Backup
- ✓ Car Parking
- ✓ Indoor Games Room
- ✓ Video Door Phone

