A photograph of tall, thin grasses with seed heads, captured in a soft, golden light. The grasses are in the foreground, slightly out of focus, and extend from the bottom left towards the center. The background is a solid, warm tan color.

*Journey to the  
center of your world.*

An artistic rendering of a modern high-rise building at dusk. The building features a distinctive facade with white, cantilevered balconies that create a rhythmic, stepped pattern. The balconies are illuminated from within, casting a warm glow. The ground floor is a landscaped plaza with trees, walkways, and outdoor seating areas. In the foreground, a road with cars is visible, including a white sedan and a dark car. The sky is a deep blue, and a street lamp is visible on the right. The overall scene is a vibrant and modern urban environment.

*Building  
our legacy  
on the projects  
we build*



With more than 170+ projects completed and 400+ acres of layouts developed across Chennai and Bangalore, our portfolio is a testament to our commitment to quality and timely delivery. Our mission is to cultivate vibrant communities and deliver unmatched value to all our stakeholders—a dedication that has solidified our reputation as one of India's premier construction companies.

Our approach is deeply rooted in the belief that every development should not only meet the highest standards of quality living but also enhance the lives of those who live and work within them. We understand that trust is built over time, through consistent delivery and a customer-first approach that ensures every detail, from design to delivery, is executed with the utmost care.

For more than 36 years, we have dedicated ourselves to crafting residential homes and commercial spaces that transcend the ordinary and turn them into landmarks of thoughtful design. At the heart of our sustained success is our dedication to transparency and integrity.

These core values have earned us the trust and loyalty of over 2,500 satisfied customers, making Nu-Tech one of the most preferred and respected real estate developers in South India.

As we look to the future, Nu-Tech continues to expand its footprint, with 5 million square feet currently under development and more than 100+ acres of layouts in the pipeline. We are committed to staying at the forefront of the industry, leading with innovation and setting new benchmarks for excellence in real estate.

Our vision is clear: to create spaces that not only meet the highest standards of quality and design but also enrich the lives of those who call it their home. In every project, from the first blueprint to the final handover, we strive to create lasting value—for our customers, our communities, and our stakeholders. This is the legacy of Nu-Tech: a legacy built on trust, quality, and a relentless commitment to excellence that will continue to shape the skyline of South India for generations to come.



No-Tech  
CONSISTENT. ALWAYS.

No-Tech  
CONSISTENT. ALWAYS.



CENTRAL  
PARK

## *Central Park at a glance:*

-  Unfolds across 10.66 acres
-  17 beautifully designed blocks
-  655 homes with 2,3 & 4 BHK apartments
-  1 acre central park
-  Built aesthetically with neoclassical architecture
-  40+ premium amenities of modern urban life
-  28,000+ sq. ft. clubhouse for the ideal work-life-play balance
-  Exclusive retail building
-  Located centrally at Porur



**IYYAPPANTHANGAL  
BUS TERMINUS**

**DLF  
IT PARK**

**RAMACHANDRA  
HOSPITAL**

**D MART**

**LEMON TREE  
HOTEL**

**RISHS  
INTERNATIONAL  
SCHOOL**

**RELIANCE  
MALL**

**L&T  
INFOPARK**

**SN HOSPITAL**

**NUTECH  
CENTRAL PARK**

**RMZ ONE  
PARAMOUNT**

**V7 HOTEL**

**SRI CHAITANYA  
SCHOOL**

**STAR  
ACADEMY**

**UPCOMING  
METRO STATION**

**CHENNAI  
TRADE CENTRE**

*You only live once.  
Choose the centrally located life.*

Emerging as the ideal place to live, Porur provides both convenience and connectivity. With its own upcoming metro station just a stone's throw away, Porur emerges as the strategically significant location of accessible urban life.

Located in the southwestern part of Chennai, Central Park is close to the city's core IT and entertainment hubs, educational institutions and hospitals. Live life collecting moments of joy and thrive with the sense of agency you experience living here.

#### Offices

DLF IT Park	: 6 kms
RMZ One Paramount	: 5 kms
Raheja Commerzone	: 5 kms
ASV IT Park	: 5.7 kms
L&T Infopark	: 6.3 kms
Fintech City	: 7.6 kms
Chennai Trade Center	: 8 kms



#### Shopping and Entertainment

Feathers Hotel	: 6.5 kms
Saravana Stores	: 4.4 kms
DMart	: 3.5 kms
Lemon Tree Hotel	: 7 kms
Urban Square	: 10 kms
Reliance Mall	: 1.6 kms



#### Hospitals

Ramachandra Hospital	: 2 kms
SN Hospital	: 0.9 kms
Mahalakshmi Multispeciality Hospital	: 1.7 kms
DR Multispeciality Hospital	: 1.7 kms



#### Schools and Colleges

Ramachandra Medical College	: 2 kms
Venkateswara Homeopathic Medical College	: 3 kms
RISHS International School	: 3.6 kms
Sri Chaitanya School	: 2.4 kms
Adithya International Public School	: 3.4 kms
Star Academy	: 1.2 kms



#### Transportation and Connectivity

Upcoming Metro Station	: 0.8 kms
Airport	: 16 kms
Iyyapanthangal Bus Terminus	: 1.4 kms
Multiple arterial roads to all parts of the city within 500 m	





# *Centered around your comfort and dreams*

Discover Central Park, a residence where elegance and thoughtful design blend seamlessly to create a living experience that speaks to both the heart and mind. An exclusive residential development by Nu-Tech, located in the heart of Porur, Chennai, this exclusive enclave is an ode to refined living, offering a tranquil escape from the everyday hustle while keeping you connected to the pulse of the city. The project is fully Vastu-compliant and is designed for customers looking for the perfect balance between luxury, functionality, and community living.

The heart of Central Park is its verdant expanse, where over an acre of green parkland invites you to relax, rejuvenate, and reconnect with nature. It is more than just a residence; it's a community that inspires blissful living. From the convenience of a private road and commercial spaces to the peace of mind offered by flood-resilient construction and ample covered parking, every detail has been carefully considered to ensure safety, security and comfort. A 28,000+ sq.ft clubhouse offers residents multiple amenities to live life to the fullest. For those who seek a home that is a reflection of their discerning taste, Central Park is the place to be.





Artistic impression

*Neoclassical design.  
A blend of timeless aesthetics  
and modern appeal!*



*Flood-resistant homes that survive  
every weather condition.*

Artistic impression

*No common walls for uninterrupted flow of air and disturbance-free living.*



*Inclusive and accessible spaces for all ages.*

A close-up photograph of a yellow, spherical object with a grid of circular perforations, resting on a textured, mossy surface. To its right is a blue, rectangular tray with a similar grid of circular perforations. The background is a blurred, warm-toned wall.

*An oasis of endless amenities*

*Find 40+ premium amenities designed to rejuvenate every aspect of your life from wellness and play to leisure and rest.*

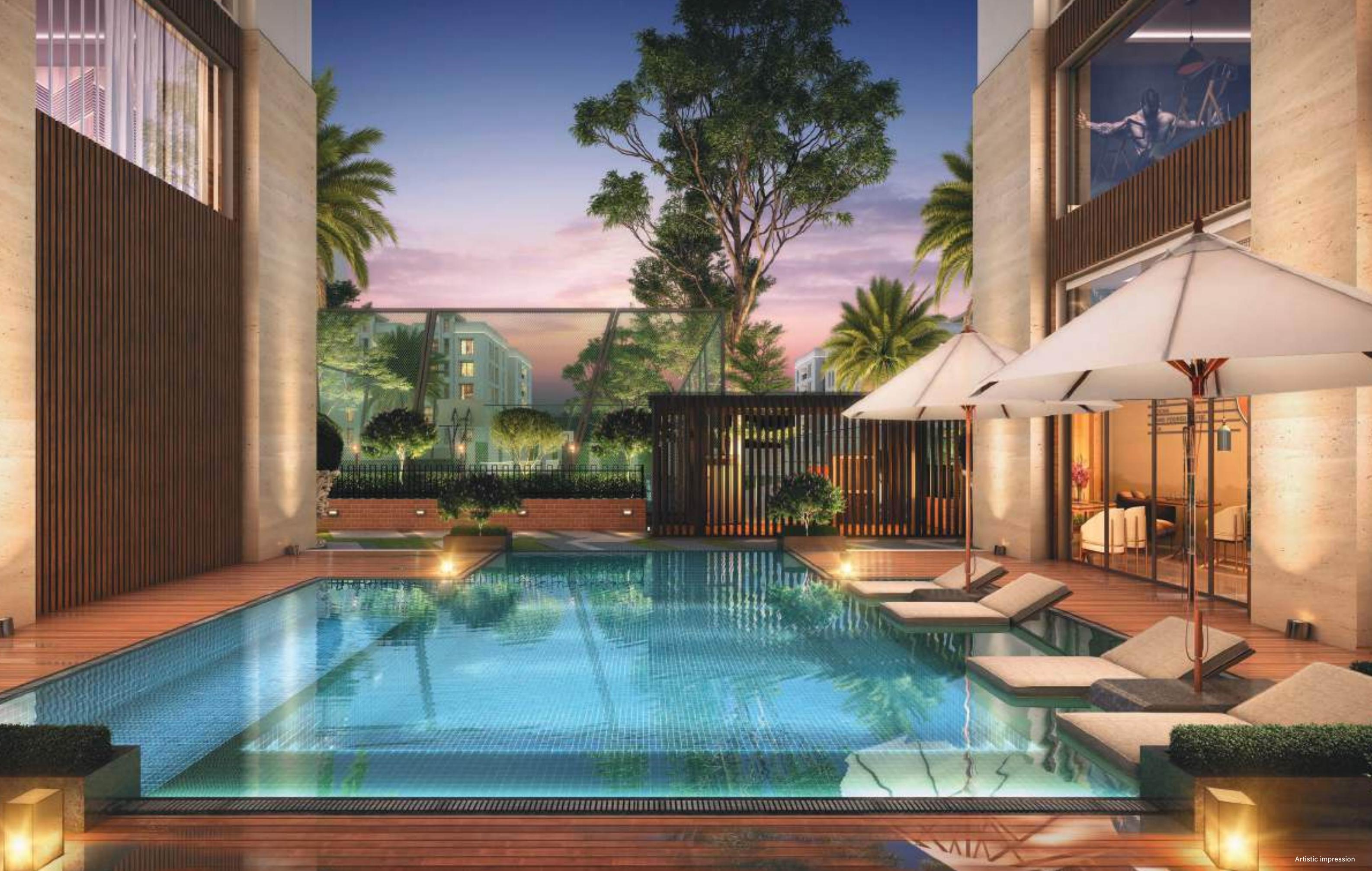


Artistic impression

## *Clubhouse at Central Park*

*Socialise, Play and Relax!*

- Café
- Front desk
- Multipurpose Hall
- Lounge
- Swimming Pool
- Kid's Pool
- Changerooms and Showers
- Kids Play / Crèche
- Library
- Co-working Space
- Learning Centre
- Gym
- Cycling Room
- Yoga
- Zumba
- Meditation
- Theatre
- Queen's Club
- Indoor Games Area
- Futsal Court
- Lounge Cabana
- Pickleball Court



Artistic impression

*Swimming Pool*  
Dive in and make a splash.



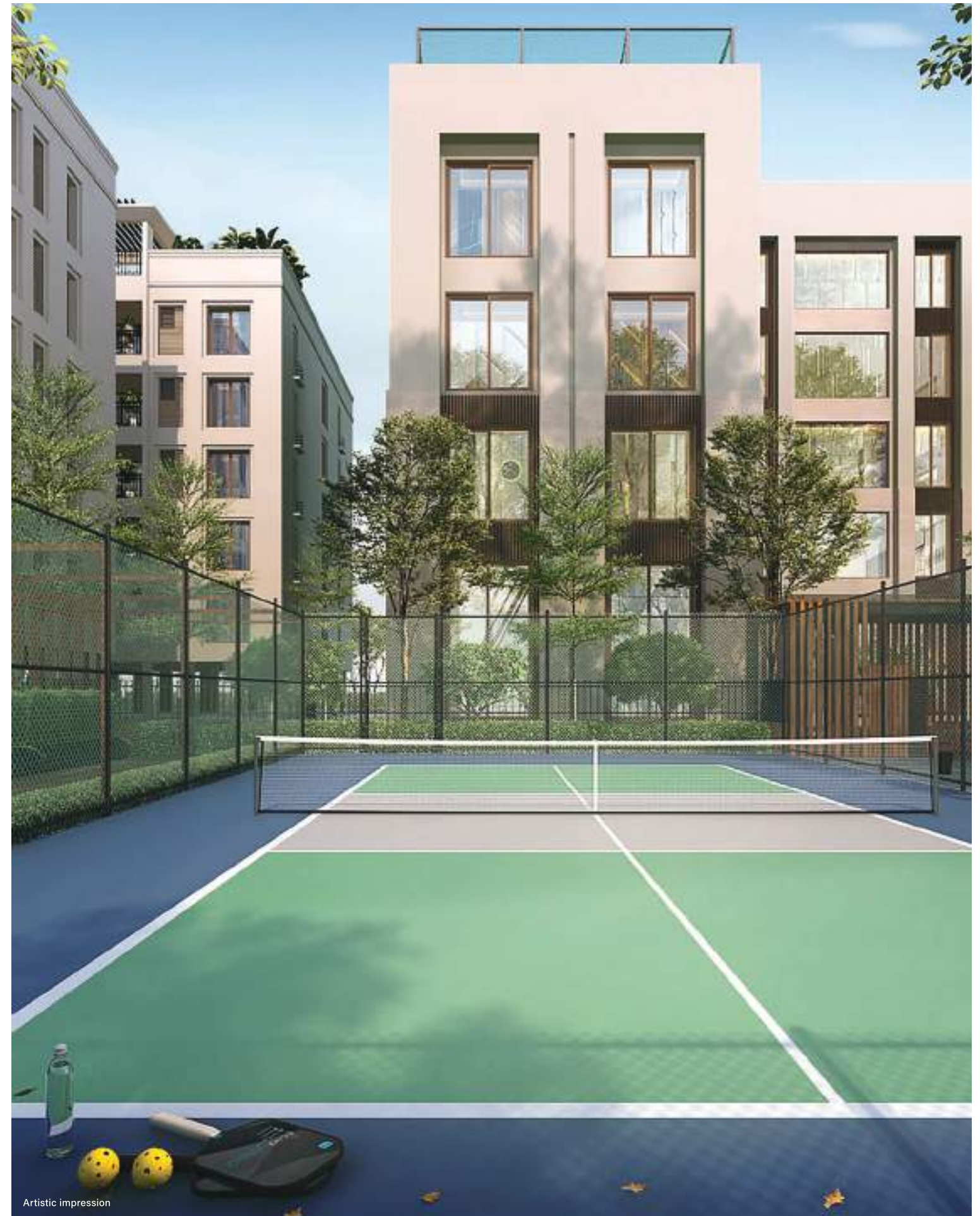
Artistic impression

## *Futsal Court*

*Get your feet in the game.*

## *Pickleball Court*

*Pick your paddle. Hit the court.*



Artistic impression



## *Co-working Space*

*Collaborate. Create. Network. Get your work done.*



*Indoor Games Area*  
Let the indoor games begin.



*Cafe*

*You don't have to step out of the gate to unwind.*

Artistic impression



Artistic impression

*Crèche*  
A safe space for your little ones.



*Multipurpose Hall*  
Celebrate every moment in style.

Artistic impression



*Fully Equipped Gym*  
Push your limits.



# *Lobby*

*The aesthetically pleasing welcome you deserve.*



*Library*

*The quiet place you and your thoughts need.*

Artistic impression



*Theatre*

*The best seat in the house? Just outside your house.*

Artistic impression



*Children's Play Area*  
A mini social hub for the little ones.

Artistic impression

## *Outdoor Amenities*

- Zen Garden
- Infinity Walk
- Exercise Yard
- Gazebo
- Frangipani Court
- Party Lawn
- Pavilion
- Amphitheatre
- Children's Play Area
- Trim Trail
- Outdoor Gym
- Maze
- Senior Citizen Plaza
- Pet Park



*Skating Rink*  
Keep the fun rolling.



*Cricket*  
Keep the big hits coming.



*Zen Garden*  
Tranquility in every corner



*Outdoor Gym*  
Workout under the sky.

Artistic impression



*Infinity Walk*  
Restore your balance and inner calm with every step.

Artistic impression



*Multipurpose Court*  
It's game time!

Artistic impression



Artistic impression

## *Key Amenities*

- Entrance Lounge
- Drivers / Maid Waiting Area
- Building Management Service (BMS) - Each Block
- CCTV Area
- Staircase Lift Lounge
- Pergola Podium
- Entrance Podium
- ATM
- Clinic
- Association Room
- EV Charging Station
- Nook Centre
- Grand Entrance Arch with Security Cabina



Nu-Tech  
CONSISTENT ALWAYS

Nu-Tech  
CONSISTENT ALWAYS



Artistic impression

*Retail at Central Park*  
Live close. Shop closer.





Artistic impression

*Large and expansive windows to let in fresh air and natural light.*

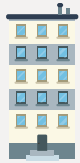


Artistic Impression

*100% Vastu-compliant homes  
designed to nurture your whole being!*

# Thoughtfulness is in the details

Thoughtfully designed spaces to make your life a breeze



## Structure

Seismic zone III compliant RCC framed structure. Walls will be Aerocon blocks and external walls will be plastered with cement motor. Internal walls with gypsum punning



## Flooring

Foyer, Living & Dining : Designer Vitrified Tiles  
Bedrooms : Designer Vitrified Tiles  
Kitchen : Anti-skid Tile  
Toilets : Anti-skid Tile  
Common Area : Indian Granite  
& Staircase  
Utility/Balcony/Private : Tiles as per terrace architect's specification



## Walls Tiles

Toilets : Designer tile up to false ceiling height  
Utility : Designer tile DADO up to 4 feet height



## Doors

- Main Doors: Wooden door frame with 35mm thick teak wood veneer shutter, polished on both sides
- Bedroom Door: Wooden door frame with 32mm thick modular door shutter, polished on both sides
- Toilet Door: Wooden door frame with 32mm thick one side teak veneer flush door
- UPVC French Door with sliding shutter for balcony as per architect's specification



## Windows & Ventilators

UPVC windows with mosquito mesh as per architect's specification



## Plumbing & Sanitary Installations

- CPVC concealed water line
- Master Bedroom Toilet: Jaquar or equivalent with single lever and shower
- Other Bedroom Toilet: Jaquar or equivalent with single lever with shower
- Sanitaryware: All sanitary fittings will be Kohler, Toto or equivalent make



Artistic impression



Artistic Impression



**Kitchen and Utility:**

Kitchen: Two water supply points and one Aqua Guard point will be provided.  
 Drain provision will be given  
 Utility: One washing machine point and one tap point with drain will be provided



**Elevator**

Fujitec, Johnson, Kone, Emperor or equivalent



**Driveway**

As per architect's specification



**Security system**

- Intercom facility with security
- CCTV camera around the driveway and entrance



**Power Backup**

100% power back for common area, additionally 500 watts for 2BHK 750 watts for 3BHK and 1000 watts for 4BHK for each apartment



**Electrical**

- Concealed wiring with modular switching (Panasonic or equivalent)
- 3 phase electricity supply with MCB and RCCB
- Telephone point provision in living and master bedroom
- A/C points for all bedrooms, living and dining
- Geyser point will be given in all bathrooms



**Painting and Finishes**

- Internal walls and ceiling: Two coats of putty, one coat primer and two coats of emulsion paint (Dulux or Asian)
- External Walls: Texture paint as per architect's specification with one coat of primer and two coats of weather-proof emulsion paint
- Balcony: MS Railing finished with enamel paint



**Other Facilities and Amenities**

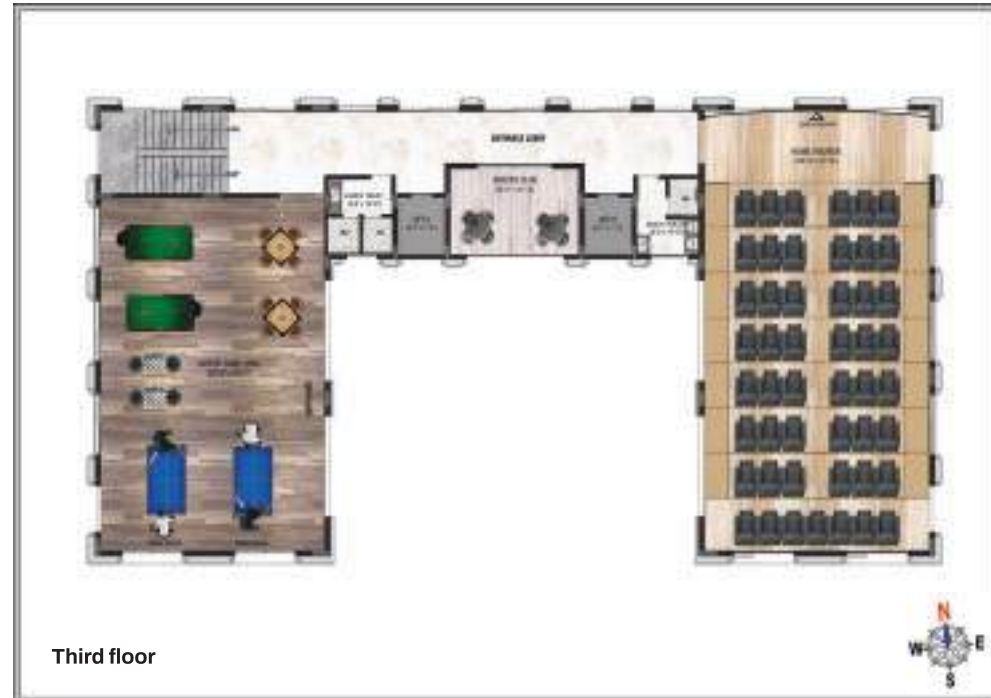
- 2 way intercom facility between all apartments and security rooms
- Integrated HD DTH system using Triax Sat Wave System
- Adequate landscape around the building
- Clubhouse packed with lifestyle amenities
- Landscaped Central Park packed with outdoor amenities



*Holistic layout plan  
for Central Park*

Phase 1   Phase 2   Clubhouse

# Clubhouse





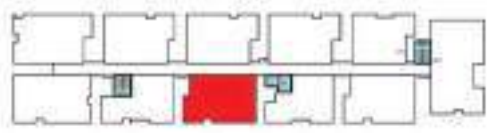
First floor plan



Typical floor plan (2<sup>nd</sup>, 3<sup>rd</sup>, 4<sup>th</sup> & 5<sup>th</sup>)

## Towers A, B & C

**101-501**  
3 Bedrooms + 2 Bathrooms



Key plan for Towers A, B & C

Super built-up area : 1381 sq.ft  
RERA carpet area : 946 sq.ft  
Balcony area : 51 sq.ft  
Private Terrace\* : 67 sq.ft

\*Private terrace only on the first floor for all 3 towers

**103-503**  
3 Bedrooms + 3 Bathrooms



Key plan for Towers A, B & C

Super built-up area : 1514 sq.ft  
RERA carpet area : 1047 sq.ft  
Balcony area : 48 sq.ft

**102-502**  
2 Bedrooms + 2 Bathrooms



Key plan for Towers A, B & C

Super built-up area : 1145 sq.ft  
RERA carpet area : 764 sq.ft  
Balcony area : 43 sq.ft  
Private Terrace\* : 21 sq.ft

\*Private terrace only on the first floor for all 3 towers

**104-504**  
3 Bedrooms + 3 Bathrooms



Key plan for Towers A, B & C

Super built-up area : 1483 sq.ft  
RERA carpet area : 1014 sq.ft  
Balcony area : 53 sq.ft

**105-505, 106-506 & 107-507**  
3 Bedrooms + 2 Bathrooms



Super built-up area : 1376 sq.ft  
RERA carpet area : 940 sq.ft  
Balcony area : 52 sq.ft  
Private Terrace\* : 73 sq.ft



Key plan for Towers A, B & C

\*Private terrace only on the first floor for all 3 towers

**108-508**  
2 Bedrooms + 2 Bathrooms



Super built-up area : 1157 sq.ft  
RERA carpet area : 771 sq.ft  
Balcony area : 44 sq.ft  
Private Terrace\* : 29 sq.ft



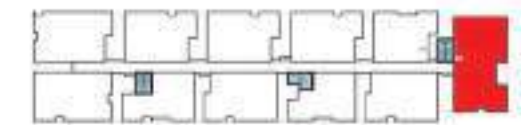
Key plan for Towers A, B & C

\*Private terrace only on the first floor for all 3 towers



**109-509**  
4 Bedrooms + 3 Bathrooms

Super built-up area : 1949 sq.ft  
RERA carpet area : 1336 sq.ft  
Balcony area : 70 sq.ft  
Private Terrace\* : 299 sq.ft



Key plan for Towers A, B & C

\*Private terrace only on the first floor for all 3 towers

**110-510**  
3 Bedrooms + 2 Bathrooms



Super built-up area : 1381 sq.ft  
RERA carpet area : 946 sq.ft  
Balcony area : 51 sq.ft  
Private Terrace\* : 58 sq.ft



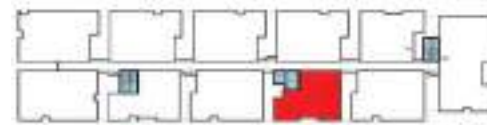
Key plan for Towers A, B & C

\*Private terrace only on the first floor for all 3 towers

**111-511**  
2 Bedrooms + 2 Bathrooms



Super built-up area : 1110 sq.ft  
RERA carpet area : 741 sq.ft  
Balcony area : 43 sq.ft  
Private Terrace\* : 21 sq.ft



Key plan for Towers A, B & C

\*Private terrace only on the first floor for all 3 towers



Artistic impression



First floor plan



Typical floor plan (2<sup>nd</sup>, 3<sup>rd</sup>, 4<sup>th</sup> & 5<sup>th</sup>)

## *Tower D*

**101-501**  
3 Bedrooms + 3 Bathrooms



Super built-up area : 1502 sq.ft  
RERA carpet area : 1012 sq.ft  
Balcony area : 54 sq.ft  
Private Terrace\* : 91 sq.ft

\*Private terrace only on the first floor



Key plan for Tower D

**103-503**  
3 Bedrooms + 3 Bathrooms



Super built-up area : 1528 sq.ft  
RERA carpet area : 1042 sq.ft  
Balcony area : 52 sq.ft  
Private Terrace\* : 66 sq.ft

\*Private terrace only on the first floor



Key plan for Tower D

**102-502**  
3 Bedrooms + 3 Bathrooms



Super built-up area : 1491 sq.ft  
RERA carpet area : 1014 sq.ft  
Balcony area : 52 sq.ft



Key plan for Tower D

**104-504 & 105-505**  
3 Bed rooms + 2 Bathrooms



Super built-up area : 1374 sq.ft  
RERA carpet area : 927 sq.ft  
Balcony area : 52 sq.ft  
Private Terrace\* : 65 sq.ft

\*Private terrace only on the first floor



Key plan for Tower D

**106-506**  
3 Bed rooms + 2 Bathrooms



Key plan for Tower D

Super built-up area : 1374 sq.ft  
RERA carpet area : 927 sq.ft  
Balcony area : 52 sq.ft  
Private Terrace\* : 69 sq.ft

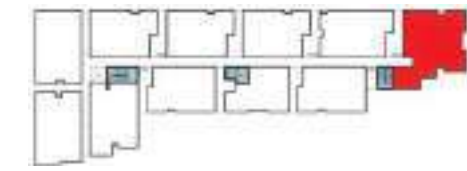
\*Private terrace only on the first floor

**108-508**  
4 Bedrooms + 3 Bathrooms



Super built-up area : 1957 sq.ft  
RERA carpet area : 1331 sq.ft  
Balcony area : 58 sq.ft  
Private Terrace\* : 36 sq.ft

\*Private terrace only on the first floor



Key plan for Tower D

**107-507**  
3 Bedrooms + 3 Bathrooms

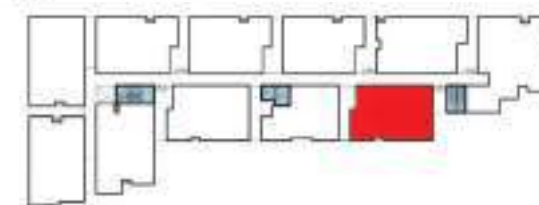


Key plan for Tower D

Super built-up area : 1523 sq.ft  
RERA carpet area : 1034 sq.ft  
Balcony area : 53 sq.ft  
Private Terrace\* : 68 sq.ft

\*Private terrace only on the first floor

**109-509**  
3 Bedrooms + 2 Bathrooms



Key plan for Tower D

Super built-up area : 1386 sq.ft  
RERA carpet area : 939 sq.ft  
Balcony area : 51 sq.ft  
Private Terrace\* : 56 sq.ft

\*Private terrace only on the first floor

**110-510**  
2 Bedrooms + 2 Bathrooms



Super built-up area : 1130 sq.ft  
RERA carpet area : 749 sq.ft  
Balcony area : 43 sq.ft  
Private Terrace\* : 25 sq.ft

\*Private terrace only on the first floor

Key plan for Tower D



Artistic impression

**111-511**  
3 Bedrooms + 2 Bathrooms



Super built-up area : 1394 sq.ft  
RERA carpet area : 945 sq.ft  
Balcony area : 51 sq.ft  
Private Terrace\* : 65 sq.ft

\*Private terrace only on the first floor

Key plan for Tower D



Artistic impression



First floor plan



Typical floor plan (2<sup>nd</sup>, 3<sup>rd</sup>, 4<sup>th</sup> & 5<sup>th</sup>)

## Tower E

**101-501, 102-502, 103-503 & 104-504**  
3 Bedrooms + 2 Bathrooms



Super built-up area : 1356 sq.ft  
RERA carpet area : 938 sq.ft  
Balcony area : 51 sq.ft  
Private Terrace\* : 73 sq.ft

\*Private terrace only on the first floor



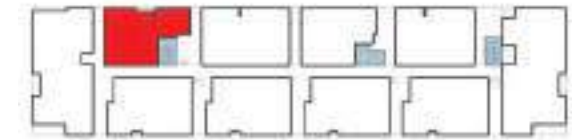
Key plan for Tower E

**106-506**  
2 Bedrooms + 2 Bathrooms



Super built-up area : 1149 sq.ft  
RERA carpet area : 784 sq.ft  
Balcony area : 36 sq.ft  
Private Terrace\* : 21 sq.ft

\*Private terrace only on the first floor



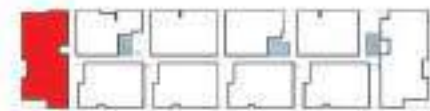
Key plan for Tower E

**105-505**  
4 Bedrooms + 4 Bathrooms



Super built-up area : 1994 sq.ft  
RERA carpet area : 1378 sq.ft  
Balcony area : 76 sq.ft  
Private Terrace\* : 104 sq.ft

\*Private terrace only on the first floor



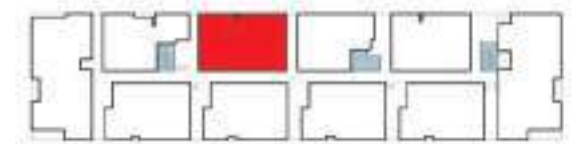
Key plan for Tower E

**107-507**  
3 Bedrooms + 3 Bathrooms



Super built-up area : 1486 sq.ft  
RERA carpet area : 1052 sq.ft  
Balcony area : 38 sq.ft  
Private Terrace\* : 57 sq.ft

\*Private terrace only on the first floor



Key plan for Tower E

**108-508**  
2 Bedrooms + 2 Bathrooms



Super built-up area : 1133 sq.ft  
RERA carpet area : 777 sq.ft  
Balcony area : 40 sq.ft

Key plan for Tower E

**110-510**  
4 Bedrooms + 4 Bathrooms



Super built-up area : 2070 sq.ft  
RERA carpet area : 1441 sq.ft  
Balcony area : 76 sq.ft  
Private Terrace\* : 104 sq.ft

\*Private terrace only on the first floor



Key plan for Tower E

**109-509**  
3 Bedrooms + 2 Bathrooms



Super built-up area : 1337 sq.ft  
RERA carpet area : 938 sq.ft  
Balcony area : 38 sq.ft  
Private Terrace\* : 98 sq.ft

\*Private terrace only on the first floor

Key plan for Tower E



First floor plan



Typical floor plan (2<sup>nd</sup>, 3<sup>rd</sup>, 4<sup>th</sup> & 5<sup>th</sup>)

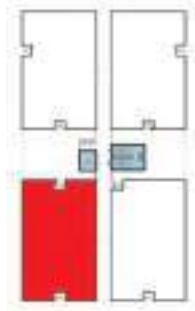
# Towers F, G & H

**101-501**  
3 Bedrooms + 3 Bathrooms



Super built-up area : 1807 sq.ft  
RERA carpet area : 1277 sq.ft  
Balcony area : 67 sq.ft  
Private Terrace\* : 199 sq.ft

\*Private terrace only on the first floor for all 3 towers



Key plan for Towers F, G & H

**103-503**  
3 Bedrooms + 3 Bathrooms



Super built-up area : 1751 sq.ft  
RERA carpet area : 1244 sq.ft  
Balcony area : 64 sq.ft  
Private Terrace\* : 235 sq.ft

\*Private terrace only on the first floor for all 3 towers



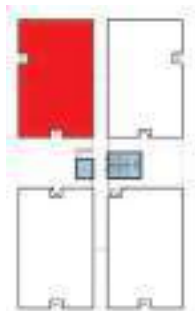
Key plan for Towers F, G & H

**102-502**  
3 Bedrooms + 3 Bathrooms



Super built-up area : 1750 sq.ft  
RERA carpet area : 1243 sq.ft  
Balcony area : 64 sq.ft  
Private Terrace\* : 213 sq.ft

\*Private terrace only on the first floor for all 3 towers



Key plan for Towers F, G & H

**104-504**  
3 Bedrooms + 3 Bathrooms



Super built-up area : 1804 sq.ft  
RERA carpet area : 1279 sq.ft  
Balcony area : 67 sq.ft  
Private Terrace\* : 171 sq.ft

\*Private terrace only on the first floor for all 3 towers



Key plan for Towers F, G & H



First floor plan



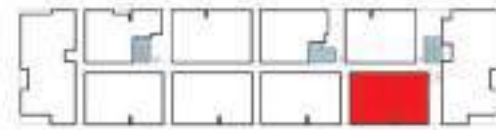
Typical floor plan (2<sup>nd</sup>, 3<sup>rd</sup>, 4<sup>th</sup> & 5<sup>th</sup>)

## Towers J & K

**101-501**  
3 Bedrooms + 3 Bathrooms



Super built-up area : 1451 sq.ft  
RERA carpet area : 1029 sq.ft  
Balcony area : 38 sq.ft  
Private Terrace\* : 76 sq.ft



Key plan for Towers J & K

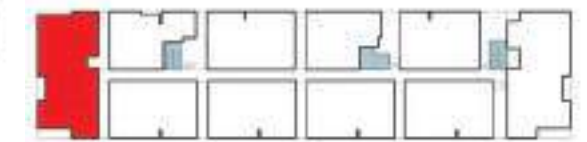
\*Private terrace only on the first floor for all 2 towers

**105-505**  
4 Bedrooms + 4 Bathrooms



Super built-up area : 1987 sq.ft  
RERA carpet area : 1378 sq.ft  
Balcony area : 76 sq.ft  
Private Terrace\* : 104 sq.ft

\*Private terrace only on the first floor for all 2 towers



Key plan for Towers J & K

**102-502, 103-503 & 104-504**  
3 Bedrooms + 3 Bathrooms



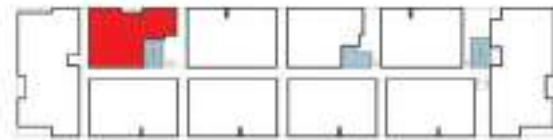
Super built-up area : 1451 sq.ft  
RERA carpet area : 1029 sq.ft  
Balcony area : 38 sq.ft  
Private Terrace\* : 56 sq.ft



Key plan for Towers J & K

\*Private terrace only on the first floor for all 2 towers

**106-506**  
2 Bedrooms + 2 Bathrooms

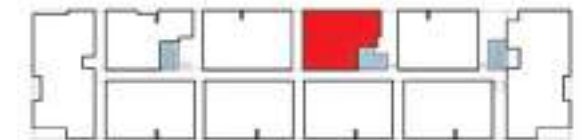


Key plan for Towers J & K

- Super built-up area : 1157 sq.ft
- RERA carpet area : 793 sq.ft
- Balcony area : 36 sq.ft
- Private Terrace\* : 19 sq.ft

\*Private terrace only on the first floor for all 2 towers

**108-508**  
2 Bedrooms + 2 Bathrooms



Key plan for Towers J & K

- Super built-up area : 1130 sq.ft
- RERA carpet area : 777 sq.ft
- Balcony area : 40 sq.ft

**107-507**  
3 Bedrooms + 3 Bathrooms



Key plan for Towers J & K

- Super built-up area : 1485 sq.ft
- RERA carpet area : 1055 sq.ft
- Balcony area : 38 sq.ft
- Private Terrace\* : 57 sq.ft

\*Private terrace only on the first floor for all 2 towers

**109-509**  
3 Bedrooms + 2 Bathrooms



Key plan for Towers J & K

- Super built-up area : 1346 sq.ft
- RERA carpet area : 949 sq.ft
- Balcony area : 38 sq.ft
- Private Terrace\* : 98 sq.ft

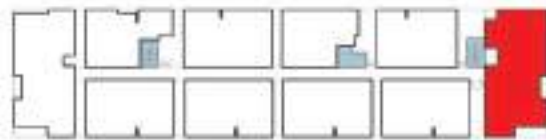
\*Private terrace only on the first floor for all 2 towers

**110-510**  
4 Bedrooms + 4 Bathrooms



Super built-up area : 2064 sq.ft  
 RERA carpet area : 1441 sq.ft  
 Balcony area : 76 sq.ft  
 Private Terrace\* : 104 sq.ft

\*Private terrace only on the first floor for all 2 towers



Key plan for Towers J & K



Artistic impression



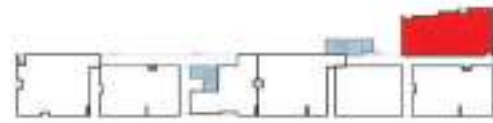
First floor plan



Typical floor plan (2<sup>nd</sup>, 3<sup>rd</sup>, 4<sup>th</sup> & 5<sup>th</sup>)

## Tower L

**101-501**  
3 Bedrooms + 3 Bathrooms



Super built-up area : 1548 sq.ft  
RERA carpet area : 1089 sq.ft  
Balcony area : 43 sq.ft

Key plan for Tower L

**103-503**  
3 Bedrooms + 2 Bathrooms



Super built-up area : 1327 sq.ft  
RERA carpet area : 940 sq.ft  
Balcony area : 47 sq.ft  
Private Terrace\* : 73 sq.ft

\*Private terrace only on the first floor

Key plan for Tower L

**102-502**  
3 Bedrooms + 3 Bathrooms

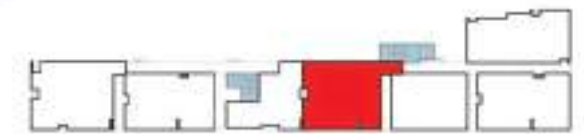


Super built-up area : 1590 sq.ft  
RERA carpet area : 1131 sq.ft  
Balcony area : 45 sq.ft  
Private Terrace\* : 58 sq.ft

\*Private terrace only on the first floor

Key plan for Tower L

**104-504**  
3 Bedrooms + 3 Bathrooms



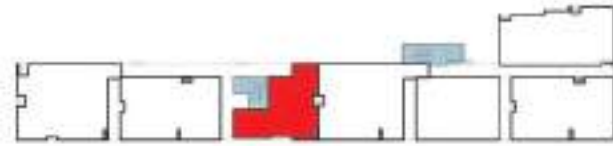
Super built-up area : 1699 sq.ft  
RERA carpet area : 1182 sq.ft  
Balcony area : 80 sq.ft

Key plan for Tower L

**105-505**  
2 Bedrooms + 2 Bathrooms



Super built-up area : 1160 sq.ft  
RERA carpet area : 752 sq.ft  
Balcony area : 37 sq.ft  
Private Terrace\* : 74 sq.ft



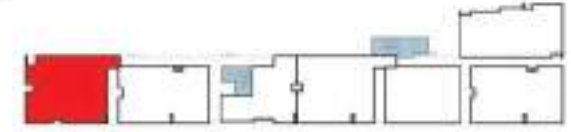
Key plan for Tower L

\*Private terrace only on the first floor

**107-507**  
3 Bedrooms + 3 Bathrooms



Super built-up area : 1853 sq.ft  
RERA carpet area : 1180 sq.ft  
Balcony area : 97 sq.ft

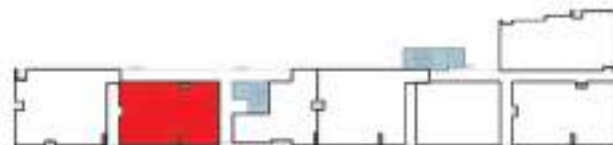


Key plan for Tower L

**106-506**  
3 Bedrooms + 3 Bathrooms



Super built-up area : 1697 sq.ft  
RERA carpet area : 1114 sq.ft  
Balcony area : 45 sq.ft  
Private Terrace\* : 67 sq.ft



Key plan for Tower L

\*Private terrace only on the first floor



Artistic impression



First floor plan



Typical floor plan (2<sup>nd</sup>, 3<sup>rd</sup>, 4<sup>th</sup> & 5<sup>th</sup>)

## Towers M, N & P

**101-501**  
3 Bedrooms + 3 Bathrooms



Super built-up area : 1412 sq.ft  
RERA carpet area : 974 sq.ft  
Balcony area : 50 sq.ft  
Private Terrace\* : 66 sq.ft

\*Private terrace only on the first floor for all 3 towers



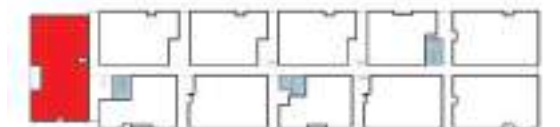
Key plan for Towers M, N & P

**103-503**  
4 Bedrooms + 3 Bathrooms



Super built-up area : 2006 sq.ft  
RERA carpet area : 1382 sq.ft  
Balcony area : 70 sq.ft  
Private Terrace\* : 209 sq.ft

\*Private terrace only on the first floor for all 3 towers



Key plan for Towers M, N & P

**102-502**  
2 Bedrooms + 2 Bathrooms



Super built-up area : 1129 sq.ft  
RERA carpet area : 756 sq.ft  
Balcony area : 43 sq.ft  
Private Terrace\* : 25 sq.ft

\*Private terrace only on the first floor for all 3 towers



Key plan for Towers M, N & P

**104-504**  
3 Bedrooms + 2 Bathrooms



Key plan for Towers M, N & P

Super built-up area : 1364 sq.ft  
RERA carpet area : 934 sq.ft  
Balcony area : 52 sq.ft  
Private Terrace\* : 66 sq.ft

\*Private terrace only on the first floor for all 3 towers

**107-507**  
2 Bedrooms + 2 Bathrooms



Key plan for Towers M, N & P

Super built-up area : 1151 sq.ft  
RERA carpet area : 761 sq.ft  
Balcony area : 44 sq.ft  
Private Terrace\* : 26 sq.ft

\*Private terrace only on the first floor for all 3 towers

**105-505 & 106-506**  
3 Bedrooms + 2 Bathrooms



Key plan for Towers M, N & P

Super built-up area : 1364 sq.ft  
RERA carpet area : 934 sq.ft  
Balcony area : 52 sq.ft  
Private Terrace\* : 61 sq.ft

\*Private terrace only on the first floor for all 3 towers

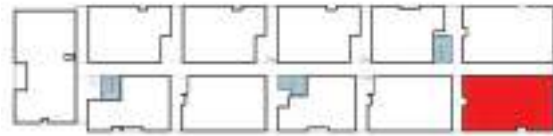
**108-508**  
3 Bedrooms + 3 Bathrooms



Key plan for Towers M, N & P

Super built-up area : 1586 sq.ft  
RERA carpet area : 1047 sq.ft  
Balcony area : 53 sq.ft

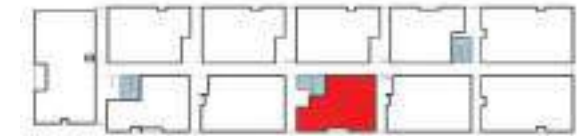
**109-509**  
3 Bedrooms + 3 Bathrooms



Key plan for Towers M, N & P

Super built-up area : 1542 sq.ft  
RERA carpet area : 1074 sq.ft  
Balcony area : 46 sq.ft

**111-511**  
2 Bedrooms + 2 Bathrooms



Key plan for Towers M, N & P

Super built-up area : 1096 sq.ft  
RERA carpet area : 733 sq.ft  
Balcony area : 43 sq.ft  
Private Terrace\* : 29 sq.ft

\*Private terrace only on the first floor for all 3 towers

**110-510**  
3 Bedrooms + 3 Bathrooms



Key plan for Towers M, N & P

Super built-up area : 1412 sq.ft  
RERA carpet area : 974 sq.ft  
Balcony area : 50 sq.ft  
Private Terrace\* : 60 sq.ft

\*Private terrace only on the first floor for all 3 towers



Artistic impression



First floor plan



Typical floor plan (2<sup>nd</sup>, 3<sup>rd</sup>, 4<sup>th</sup> & 5<sup>th</sup>)

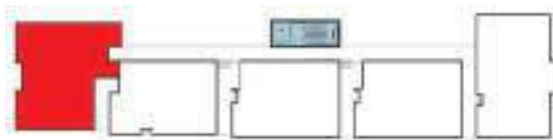
# Tower Q

**101-501**  
3 Bedrooms + 3 Bathrooms



Super built-up area : 1722 sq.ft  
RERA carpet area : 1127 sq.ft  
Balcony area : 87 sq.ft  
Private Terrace\* : 98 sq.ft

\*Private terrace only on the first floor



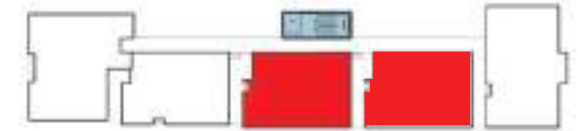
Key plan for Tower Q

**103-503 & 104-504**  
3 Bedrooms + 3 Bathrooms



Super built-up area : 1455 sq.ft  
RERA carpet area : 974 sq.ft  
Balcony area : 50 sq.ft  
Private Terrace\* : 62 sq.ft

\*Private terrace only on the first floor



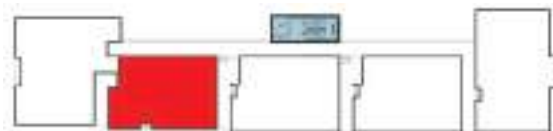
Key plan for Tower Q

**102-502**  
3 Bedrooms + 2 Bathrooms



Super built-up area : 1385 sq.ft  
RERA carpet area : 923 sq.ft  
Balcony area : 51 sq.ft  
Private Terrace\* : 77 sq.ft

\*Private terrace only on the first floor



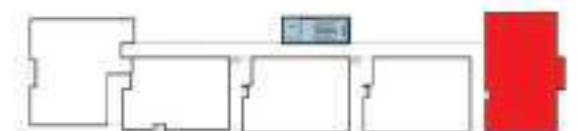
Key plan for Tower Q

**105-505**  
3 Bedrooms + 3 Bathrooms



Super built-up area : 1646 sq.ft  
RERA carpet area : 1098 sq.ft  
Balcony area : 64 sq.ft  
Private Terrace\* : 59 sq.ft

\*Private terrace only on the first floor



Key plan for Tower Q



*So now that you've gotten a little taste of life at Central Park,  
don't you think it's time you experienced it for yourself?*





**Nu-Tech**  
CONSISTENT. ALWAYS.

**Nu-Tech**  
CONSISTENT. ALWAYS.

**Nu-Tech**  
CONSISTENT. ALWAYS.





Corporate Office:  
2<sup>nd</sup> Floor, Old No. 41, New No. 76, Block 1, 1<sup>st</sup> Main Road, CIT Nagar, Nandanam, Chennai - 600 035, Tamil Nadu.  
+91 83 5008 5008 | [admin@nutechprojects.in](mailto:admin@nutechprojects.in)

Site Address:  
Nu-Tech Central Park 1,  
Periya Kolathuvancheri Main Road, Keshavardhini Nagar, Iyyapanthangal, Chennai - 600 056.

