

AURUS





FROM THIS POINT  
YOU'RE GOING TO BE  
TREATED LIKE  
YOU'RE NOT ORDINARY

A NEW LEVEL OF MAGNIFICENCE



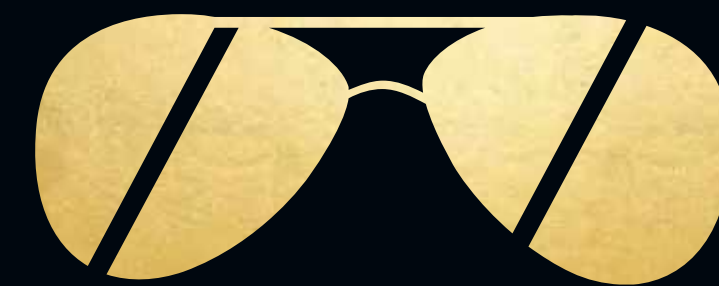


LIFE'S  
MOST PERSISTENT  
& URGENT QUESTION IS,  
ARE WE MAKING EVERY  
MOMENT COUNT?

Yes we are.  
At a Residential Park  
Designed for the world's citizens  
Located seconds away from EM Bypass  
Sprawling across 4 acres  
31 stories tall  
With affluence in every nook and corner.



Walk-in to leave your mark





DRESS LIKE JFK  
SPEAK LIKE HEMINGWAY  
WORK LIKE RALPH LAUREN  
PARTY LIKE GATSBY



Worth repeating:

DRESS LIKE JFK

SPEAK LIKE HEMINGWAY

WORK LIKE RALPH LAUREN

PARTY LIKE GATSBY

If this feels like you, sign up for a home at Aurus.

They're all 3 sides open, south facing, and overlooking the East Kolkata Wetlands.

Blessed by the sun and winds.

Lavishly landscaped.

Some even come with a terrace garden and some with 20 ft. ceilings.

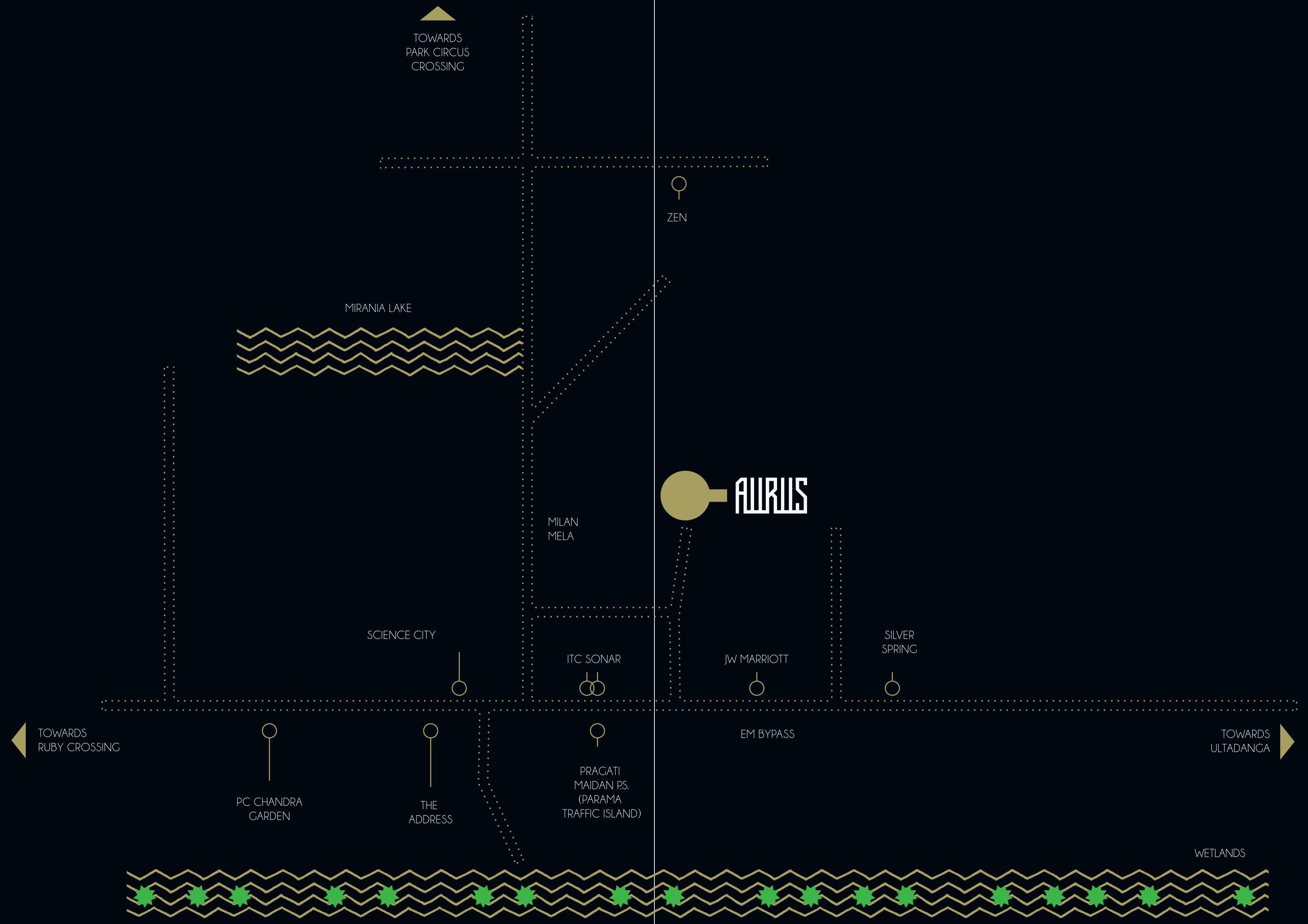
Luxurious balconies and more finer details in their planning.

Surely, compare it with the leading projects in Kolkata.



STAY DRESSED UP.

ALWAYS.



TOWARDS  
PARK CIRCUS  
CROSSING

ZEN

MIRANIA LAKE

**AURUS**

MILAN  
MELA

SCIENCE CITY

ITC SONAR

JW MARRIOTT

SILVER  
SPRING

EM BYPASS

TOWARDS  
RUBY CROSSING

TOWARDS  
ULTADANCA

PC CHANDRA  
GARDEN

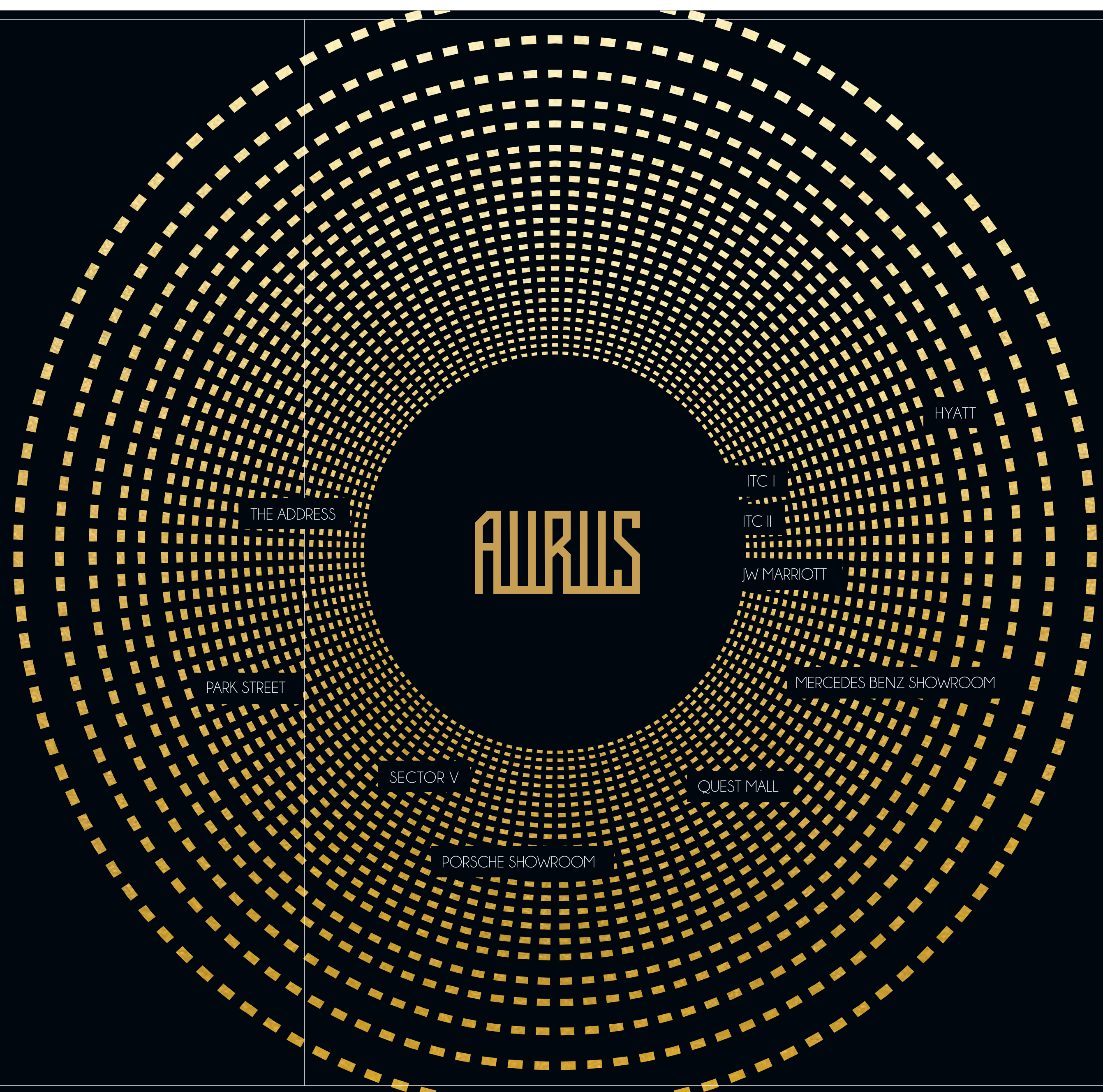
THE  
ADDRESS

PRAGATI  
MAIDAN P.S.  
(PARAMA  
TRAFFIC ISLAND)

WETLANDS

If you're looking for top-of-the-line, look around you. With ITC Sonar bang opposite and more luminaries as neighbours, you'll enjoy putting your best foot forward.

- + Overlooking East Kolkata Wetlands
- + Sector V is a 10 minutes drive
- + East West Metro on its way
- + Umpteen fine dining and lounge choices
- + Schools, Hospitals, Malls, Banks feel like they were all built around Aurus
- + New flyover connectivity to other destinations
- + EM bypass, the widest road infrastructure



THE ADDRESS

PARK STREET

SECTOR V

PORSCHE SHOWROOM

QUEST MALL

MERCEDES BENZ SHOWROOM

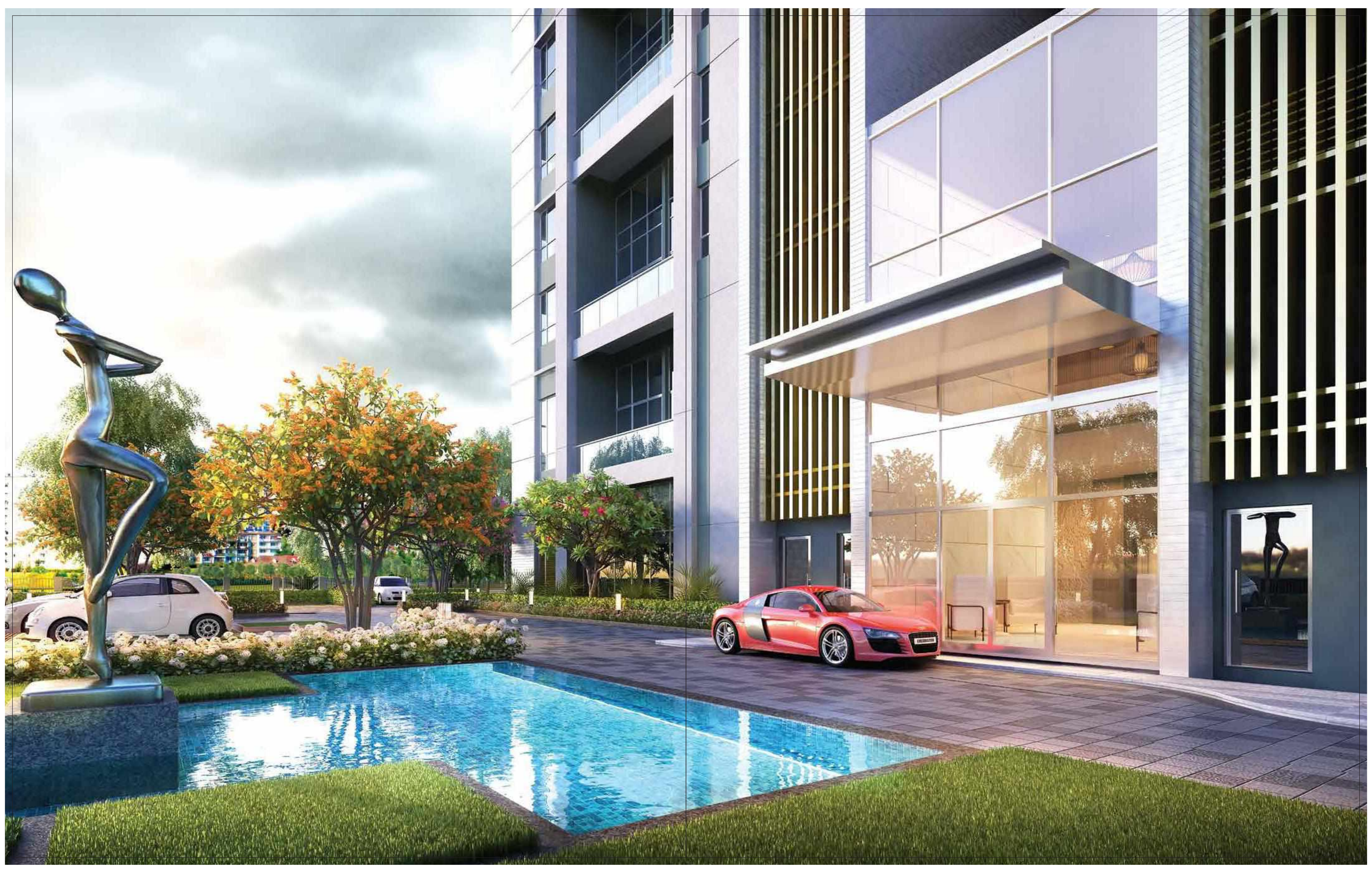
JW MARRIOTT

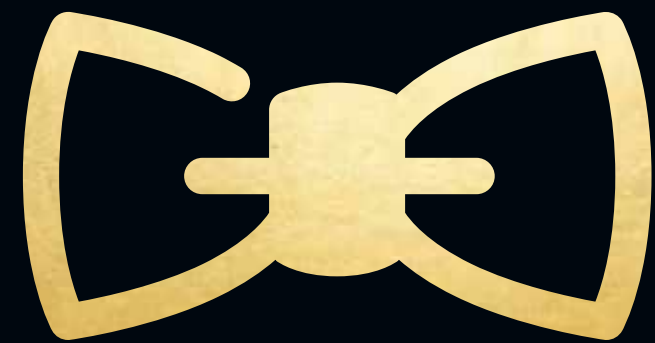
ITC II

ITC I

HYATT

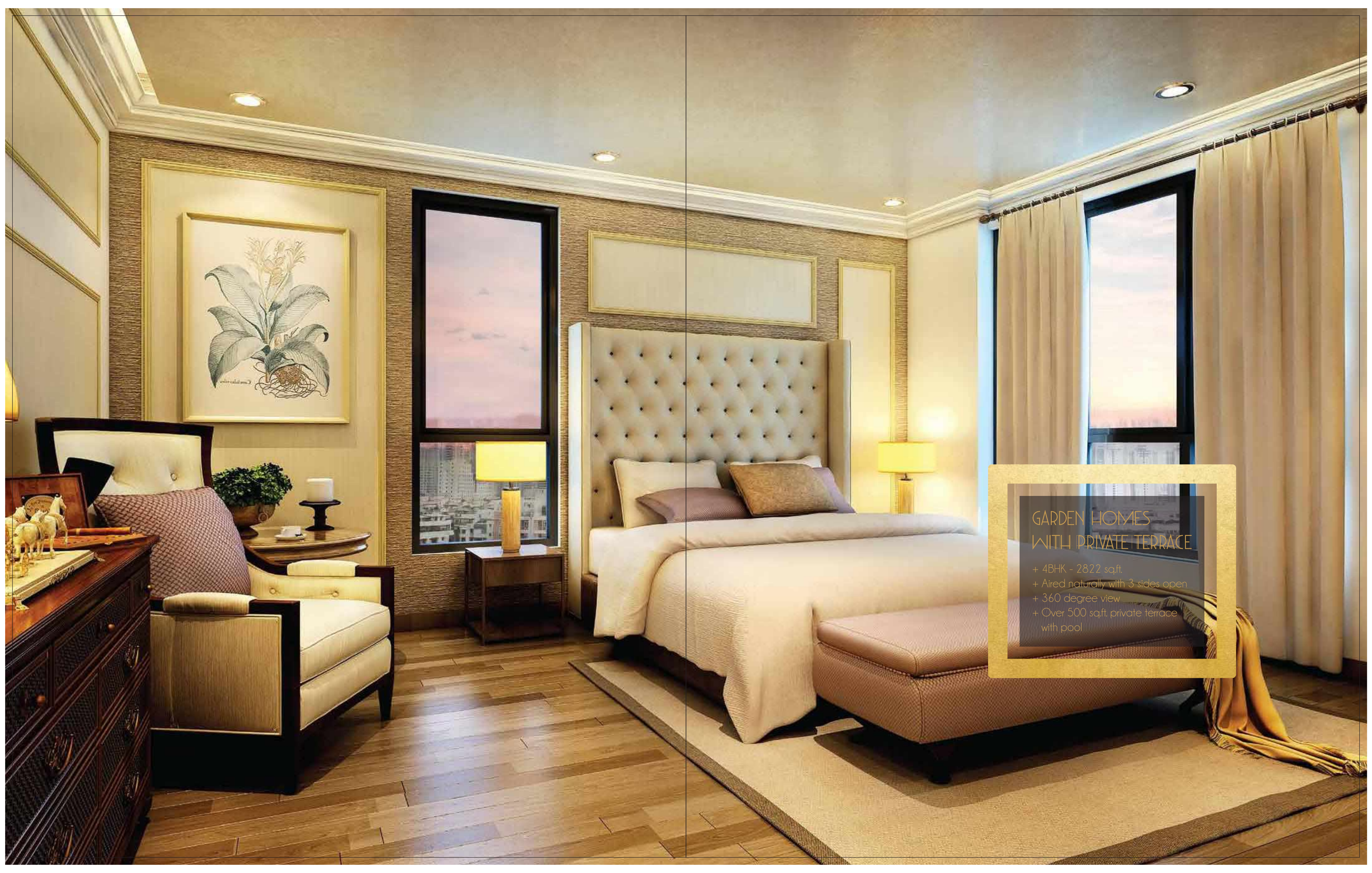






THE HOMES FEEL LIKE  
WE SHIPPED THEM  
FROM MADISON AVENUE.

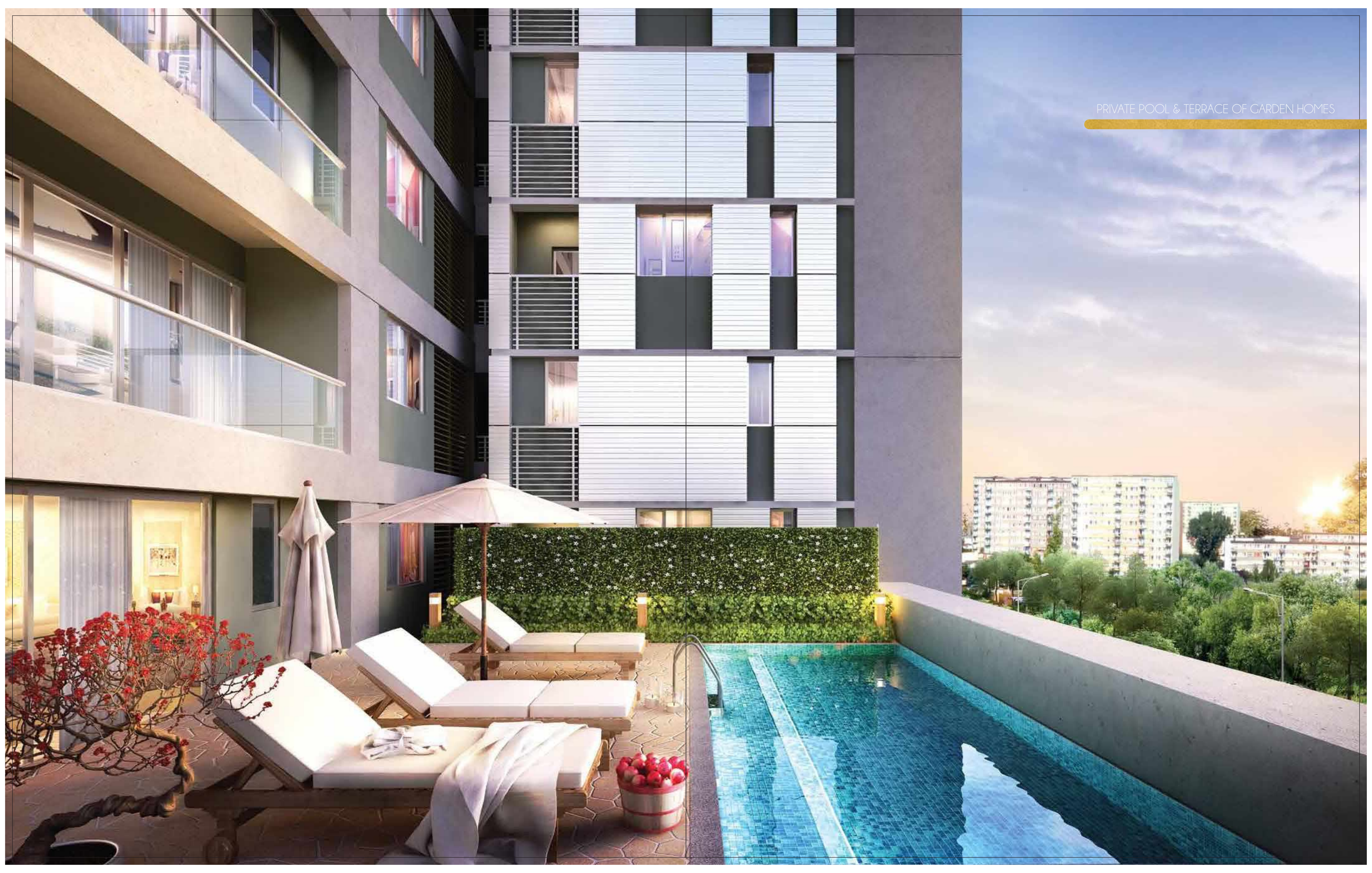
It's like stepping into Leonardo Di Caprio's movies. A quiet bling. Everything just perfect. Where you'll snooze with aplomb. Dine with a stylish demeanour. Sit back and feel like you've arrived.

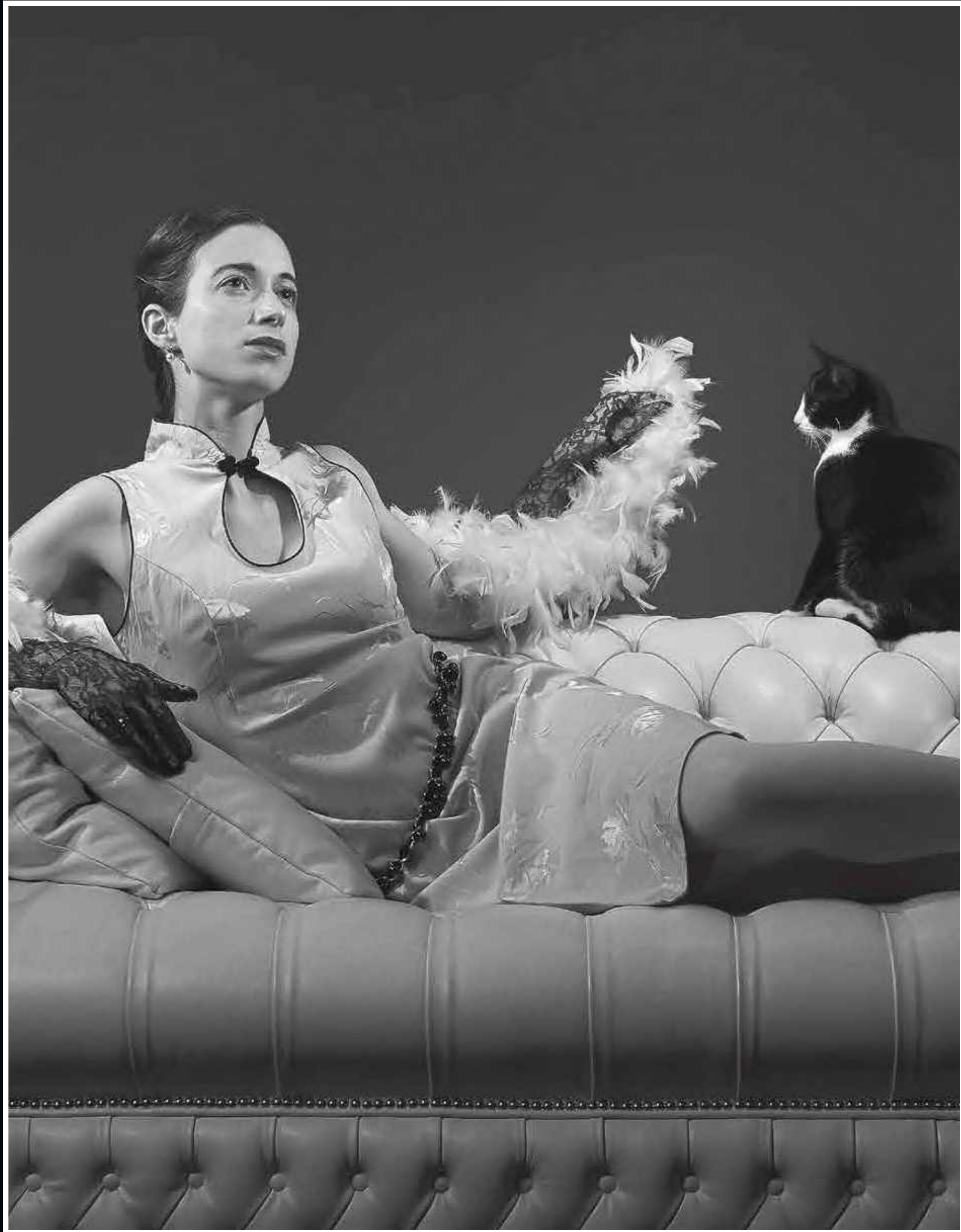


GARDEN HOMES  
WITH PRIVATE TERRACE

- + 4BHK - 2822 sq.ft.
- + Aired naturally with 3 sides open
- + 360 degree view
- + Over 500 sq.ft. private terrace with pool

PRIVATE POOL & TERRACE OF GARDEN HOMES





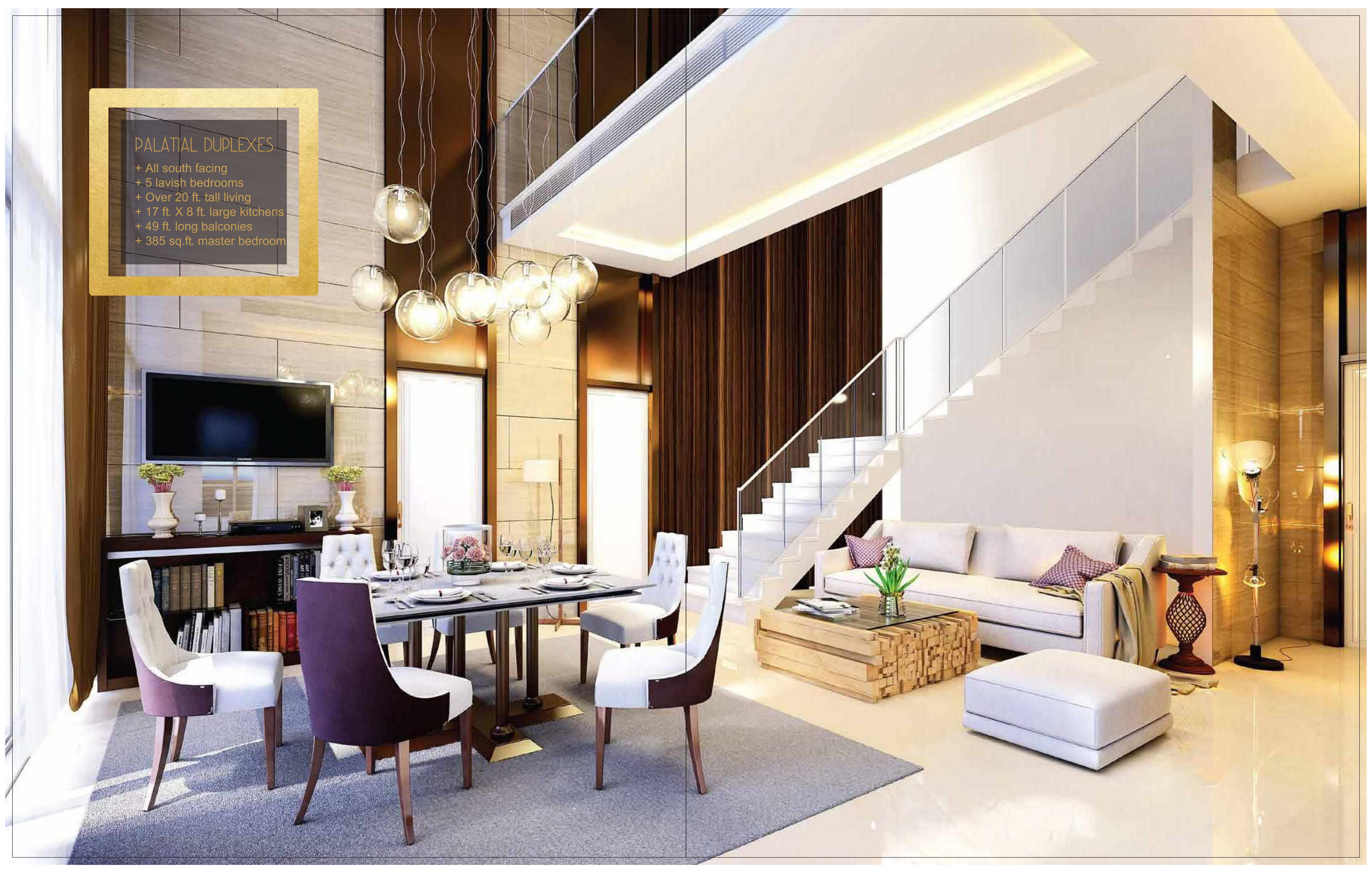
WE DROVE THE DESIGNERS INSANE.

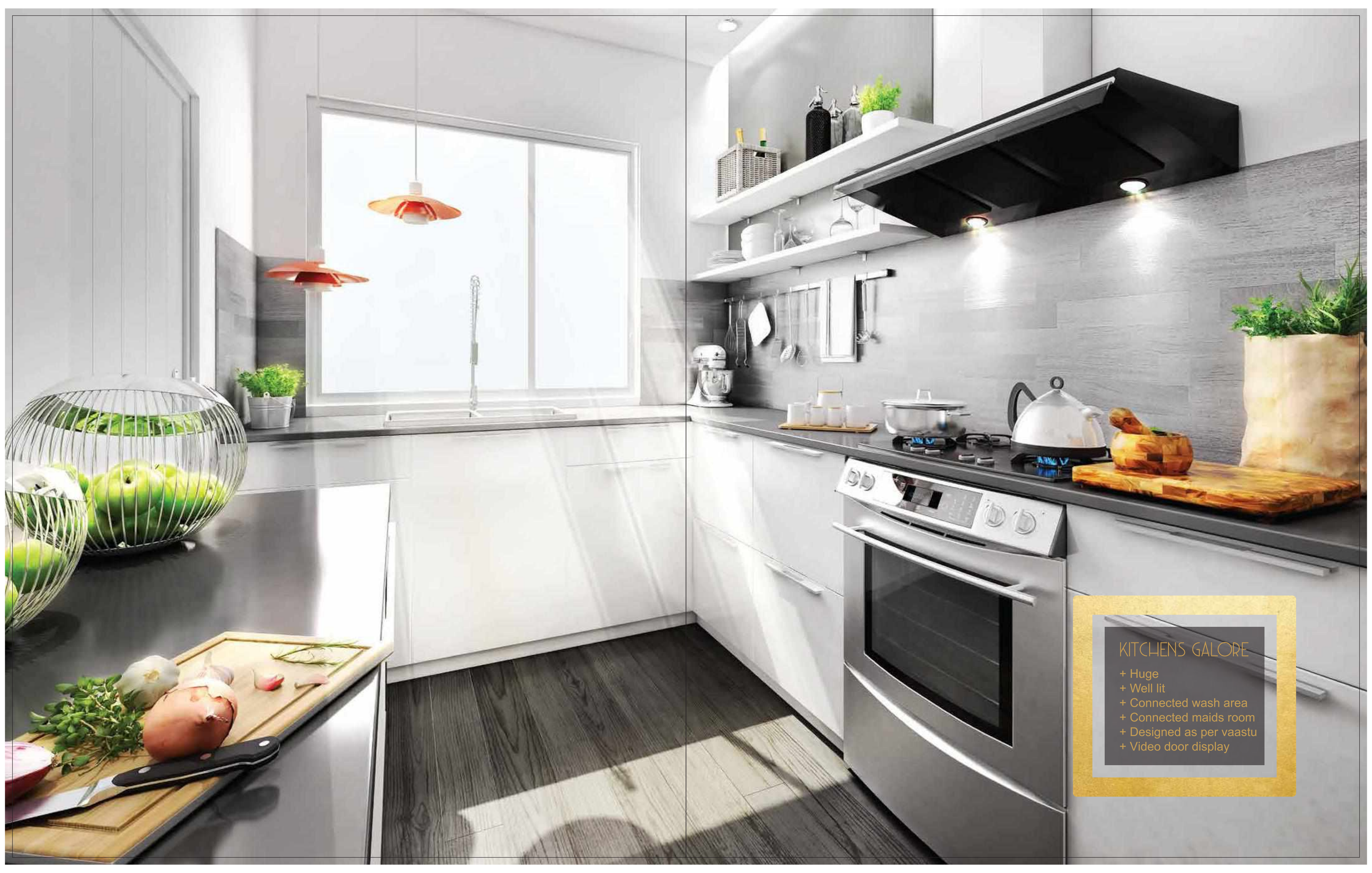
The little details are very high priority.  
All thought through by Architects from Singapore.

---

## PALATIAL DUPLEXES

- + All south facing
- + 5 lavish bedrooms
- + Over 20 ft. tall living
- + 17 ft. X 8 ft. large kitchens
- + 49 ft. long balconies
- + 385 sq.ft. master bedroom





## KITCHENS GALORE

- + Huge
- + Well lit
- + Connected wash area
- + Connected maids room
- + Designed as per vastu
- + Video door display



SOMETIMES ALL YOU NEED  
IS A BILLION DOLLAR FEELING

# REGRET THE PLUNGES YOU DIDN'T TAKE

Aura is an obsession. You will make time to engross in all its luxuries.  
It treats you like you own the world. Enough said.

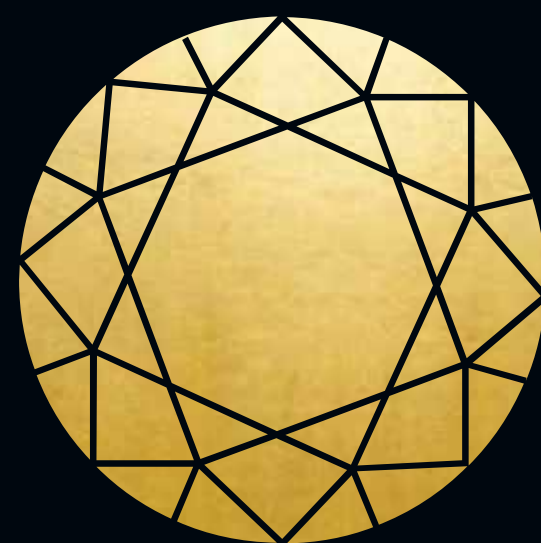


## AURA, THE CLUB

- + A new level of luxury
- + Sky lounge
- + Concierge
- + The works

CLUB RECEPTION





QUINTESSENTIALLY

Who could reserve dinner for two at Burj Al Arab  
or take care of your pet while you're travelling.

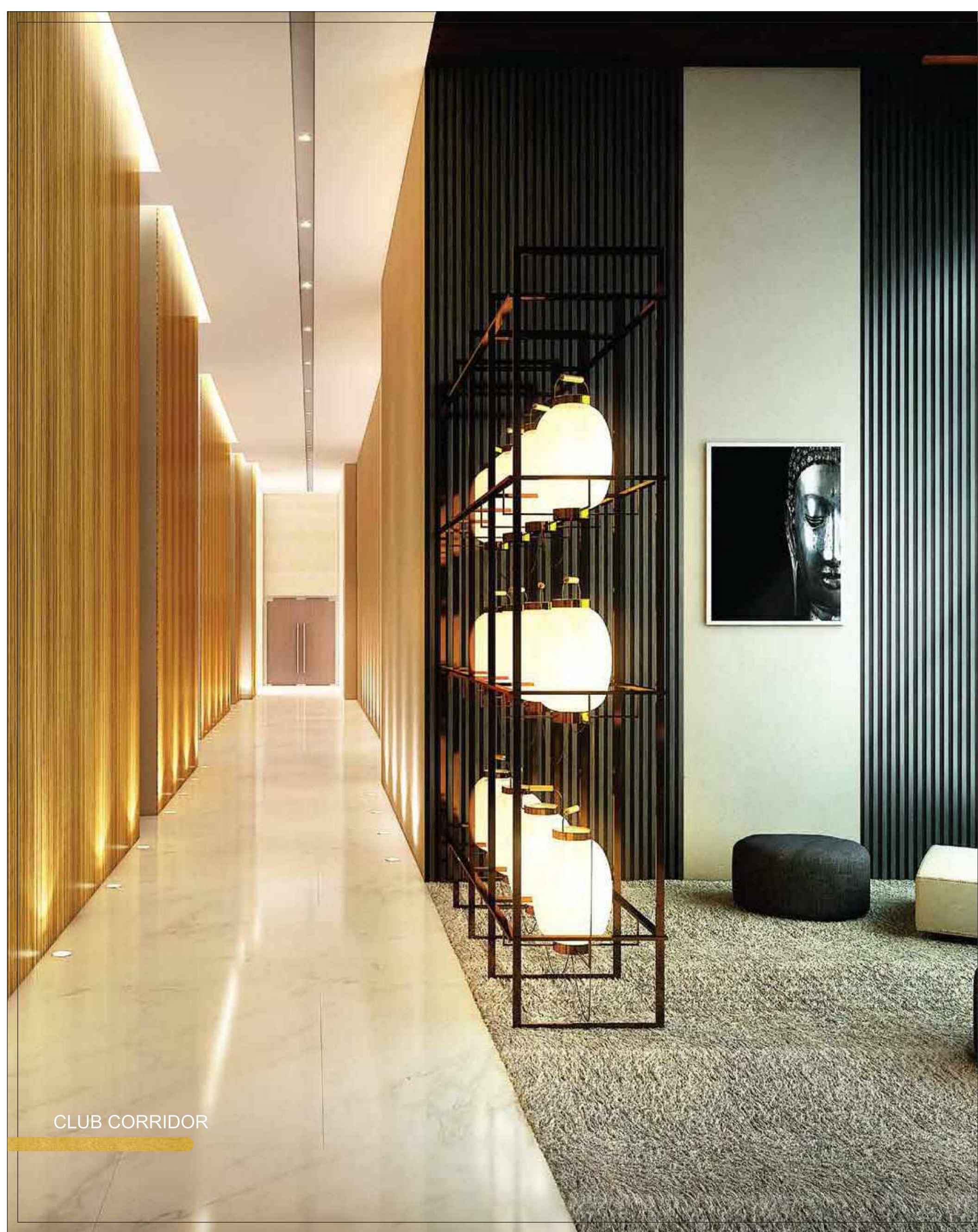
\*\*2 years complimentary membership



## WHAT MAKES YOU A LUMINARY?

- SKY LOUNGE at 330
- BOARD ROOM
- MULTIPURPOSE ROOM
- VALET
- HOUSE KEEPING
- DEDICATED HANDICAP / BICYCLE PARKING
- GYMNASIUM
- AEROBICS & YOGA
- SWIMMING POOL WITH SUN DECK & LOUNGE
- SPLASH POOL, AQUA GYM, FAMILY JACUZZIS & HOT TUBS
- POOLSIDE CABANA
- TENNIS, BADMINTON & SQUASH COURTS
- GAMES ROOM WITH POOL TABLES, TABLE TENNIS
- INDOOR TODDLERS / KIDS ROOM
- MAIL DROP & COLLECTION ROOM

All, top-of-the-line.



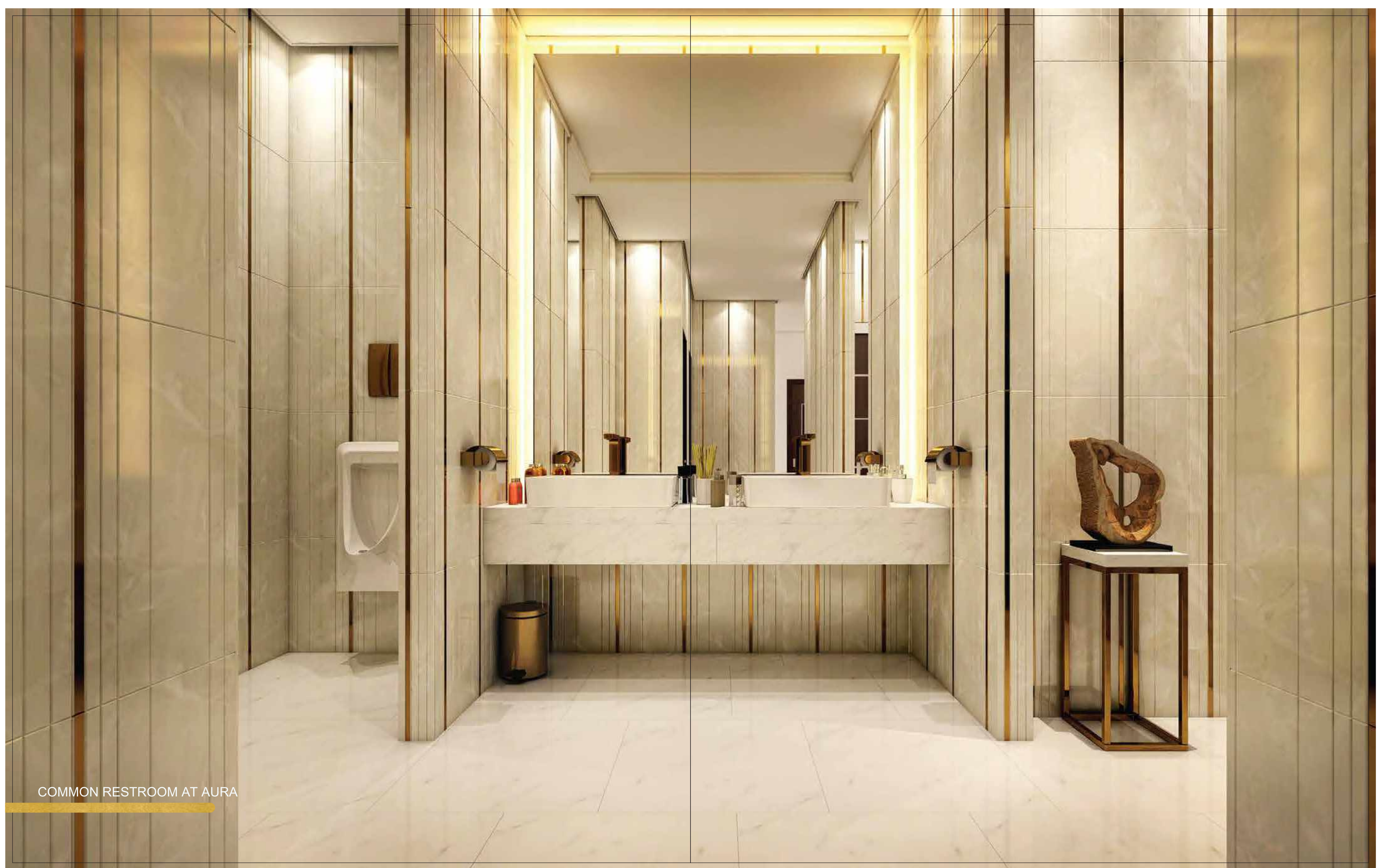
CLUB CORRIDOR



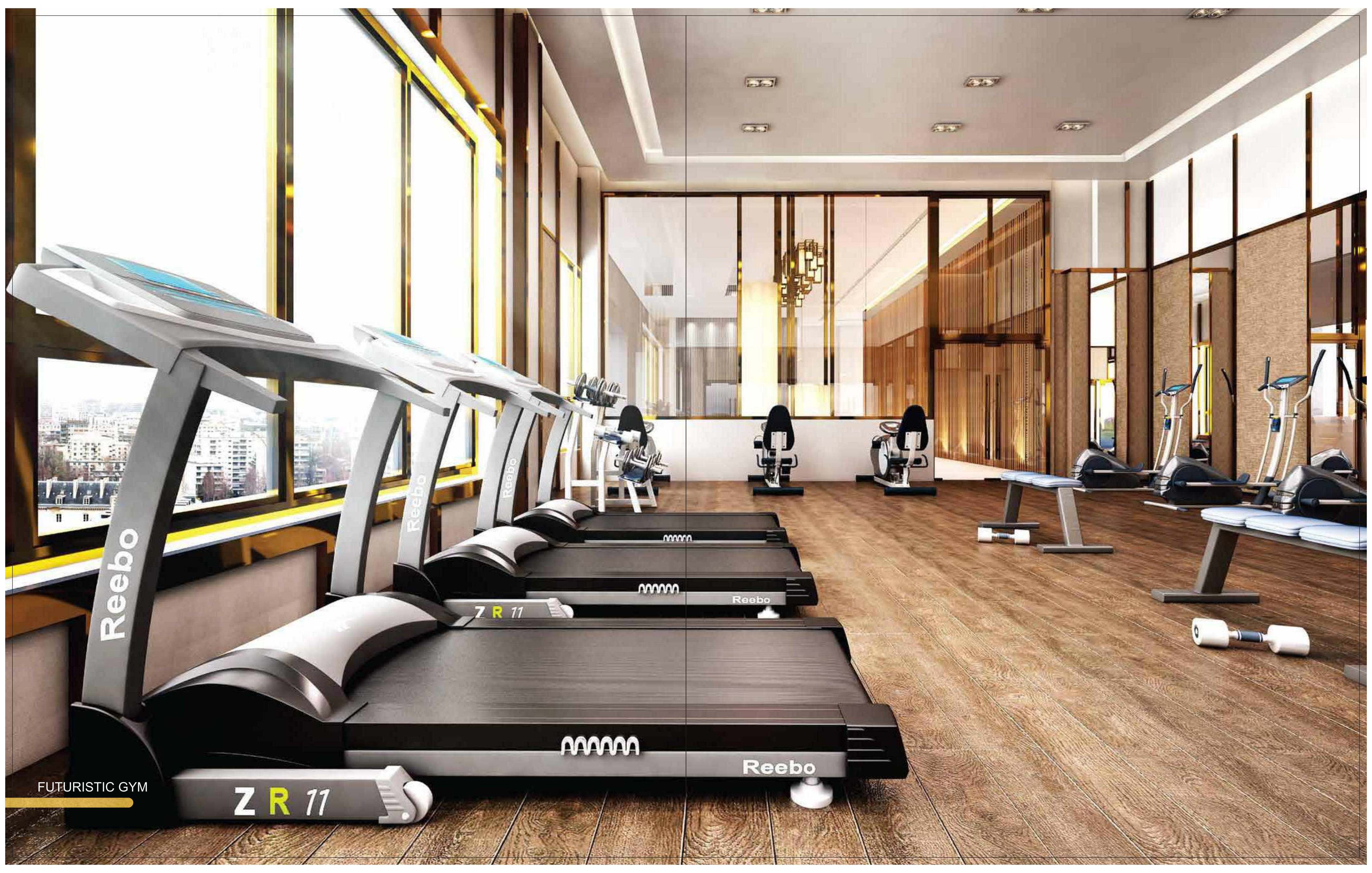
CLUB FOYER



SKY LOUNGE AT 330 FT.



COMMON RESTROOM AT AURA



FUTURISTIC GYM

Z R 11

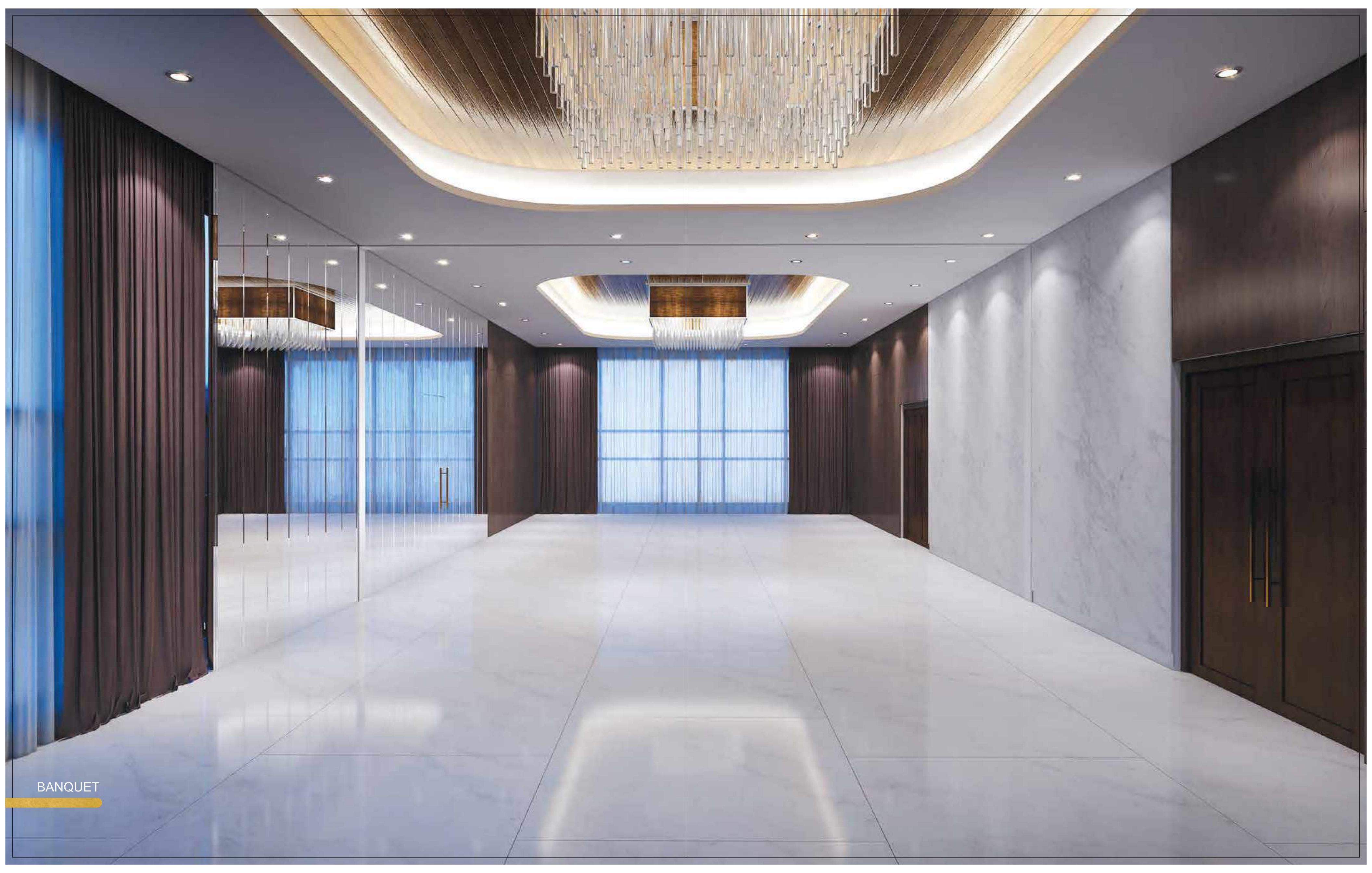
Reebo



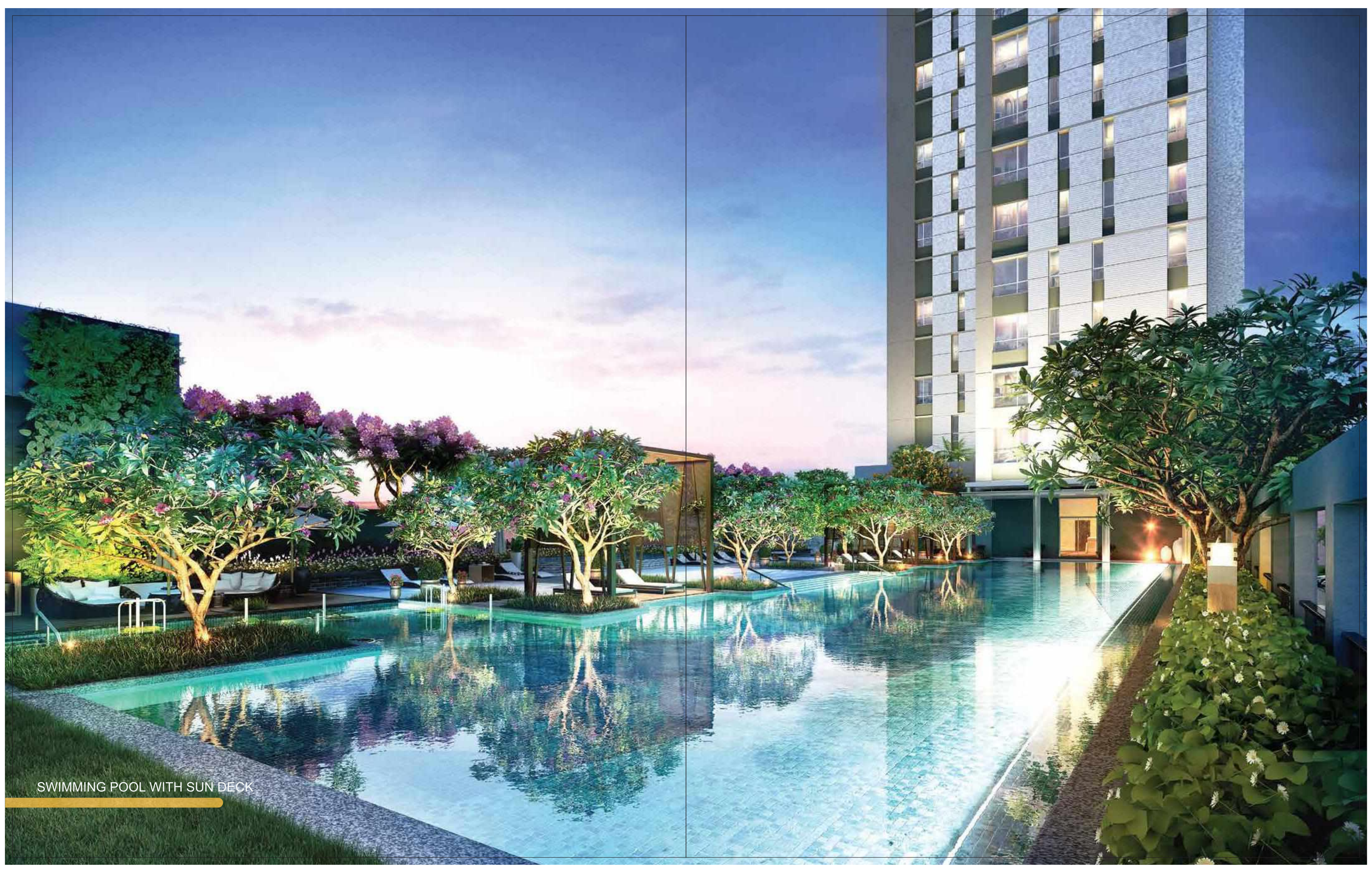
INDOOR KIDS' ROOM



INDOOR GAMES ROOM



BANQUET



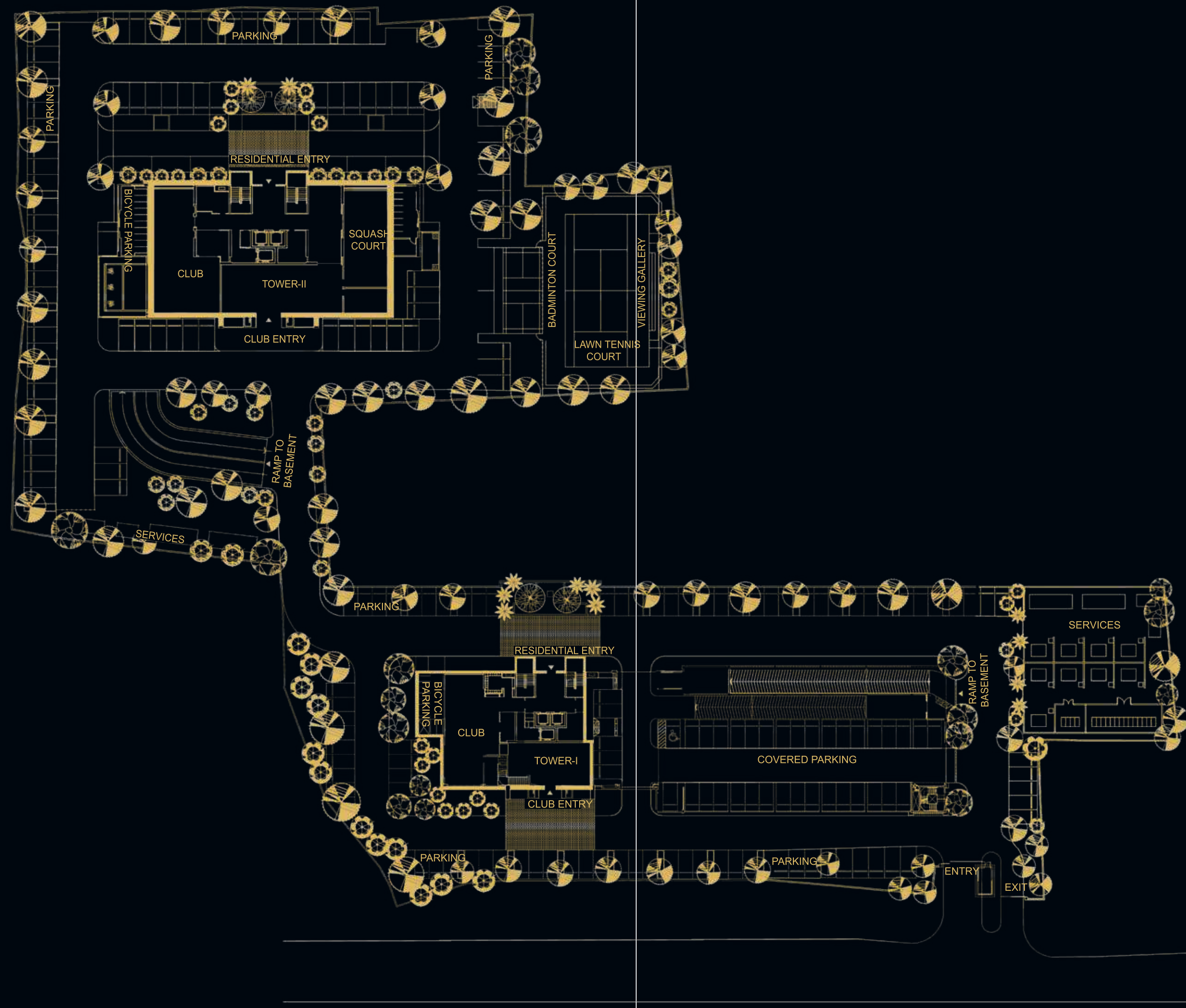
SWIMMING POOL WITH SUN DECK



POOL SIDE CABANA



TENNIS & BADMINTON COURT

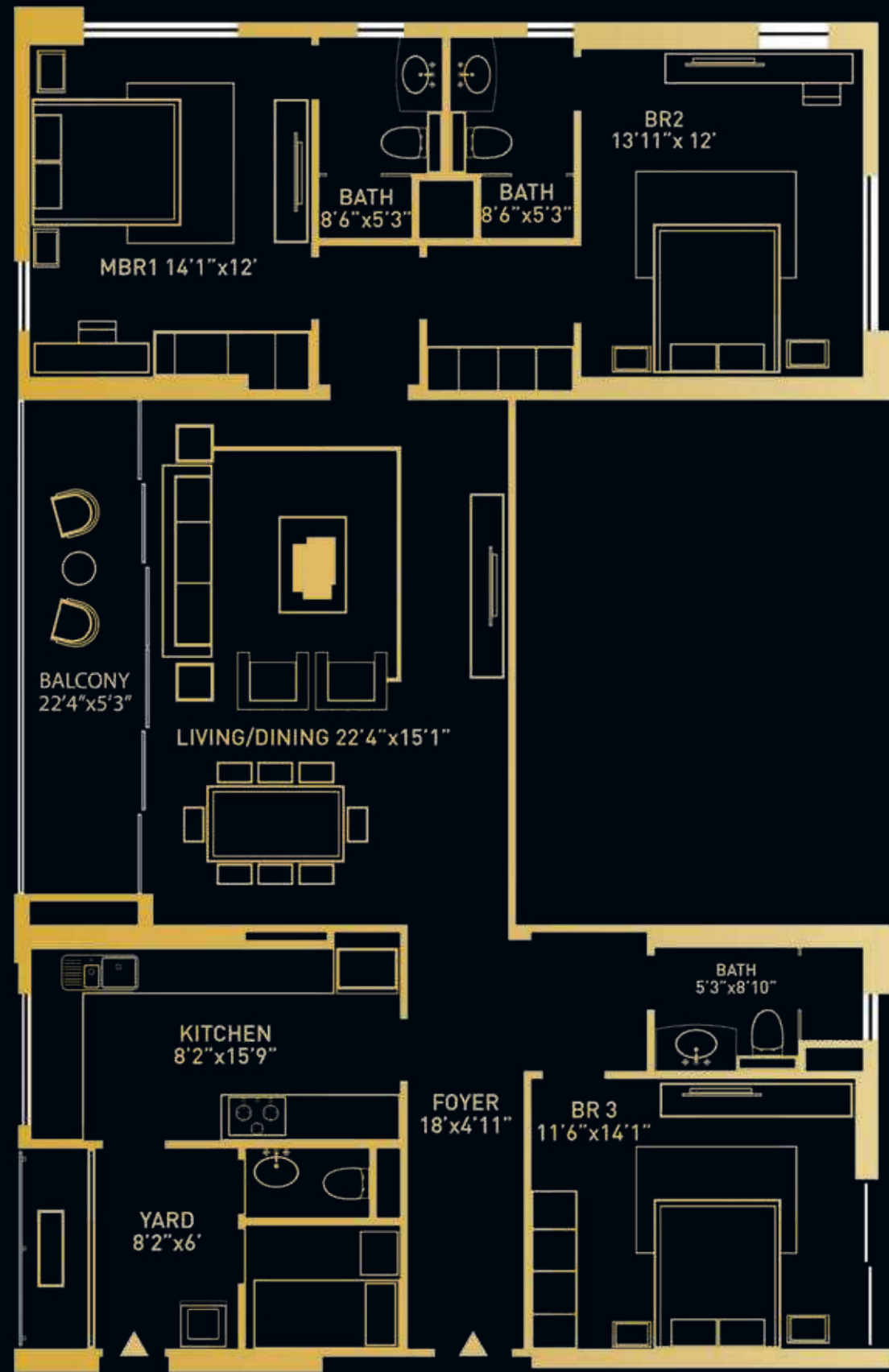


SITE PLAN





ODD FLOORS



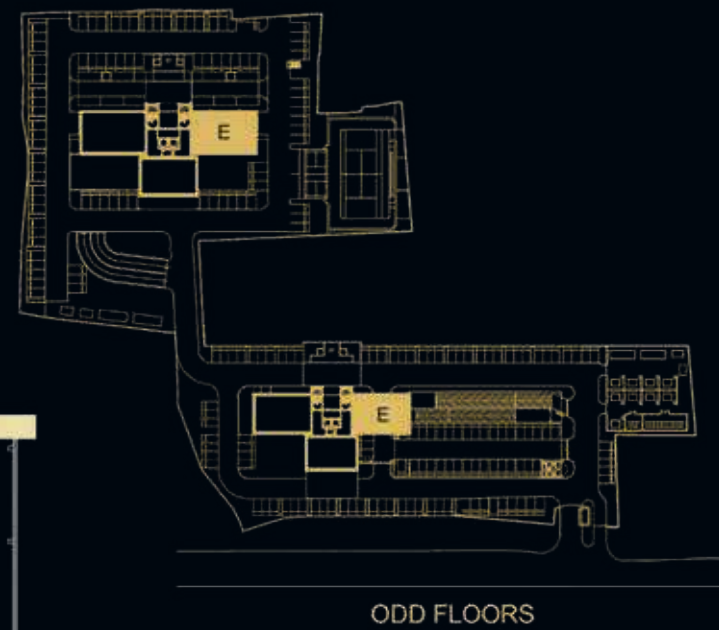
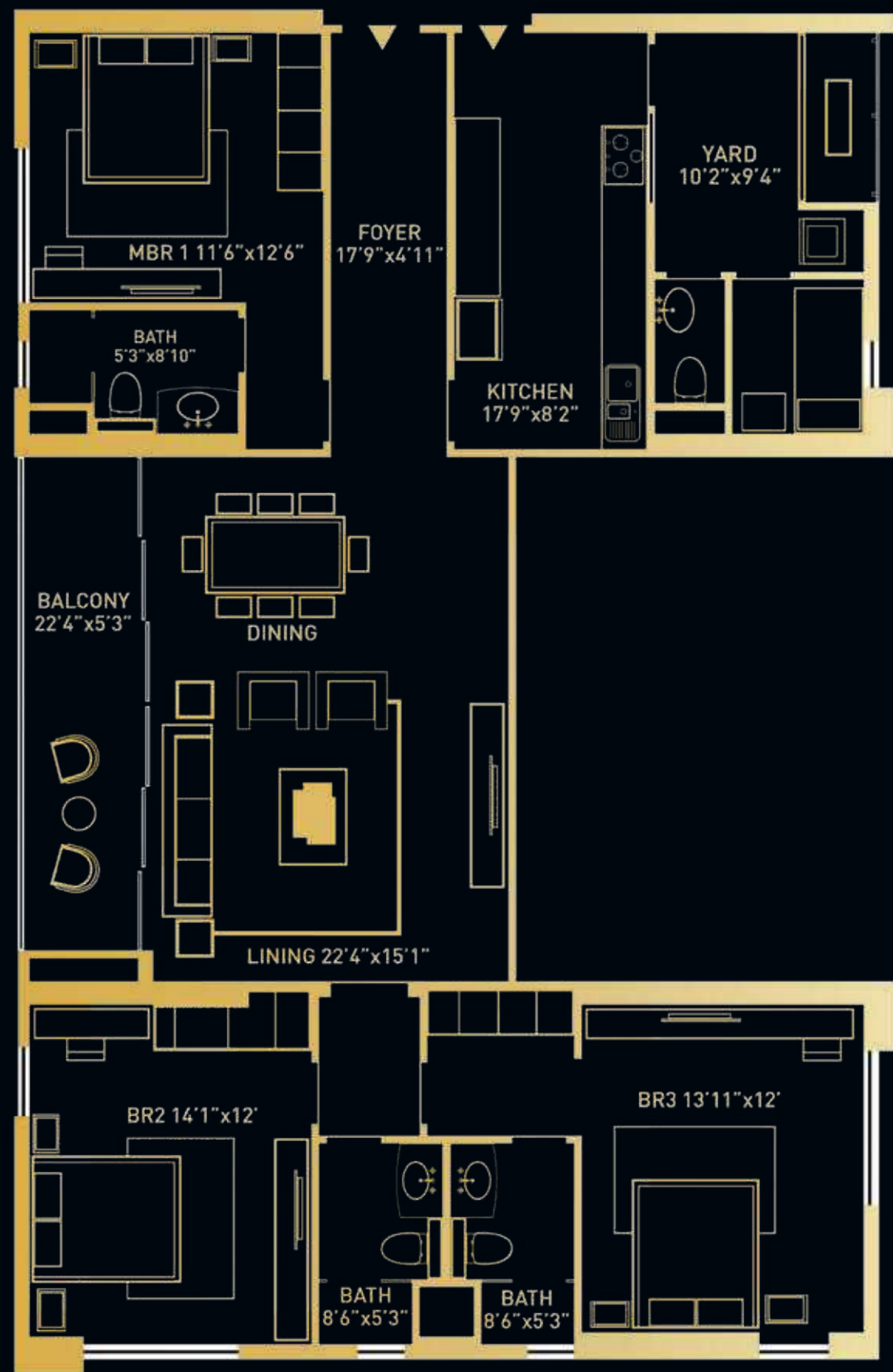
UNIT D  
3 BHK | SBA 2386 sq.ft.



UNIT D LIVING ROOM



UNIT D BEDROOM

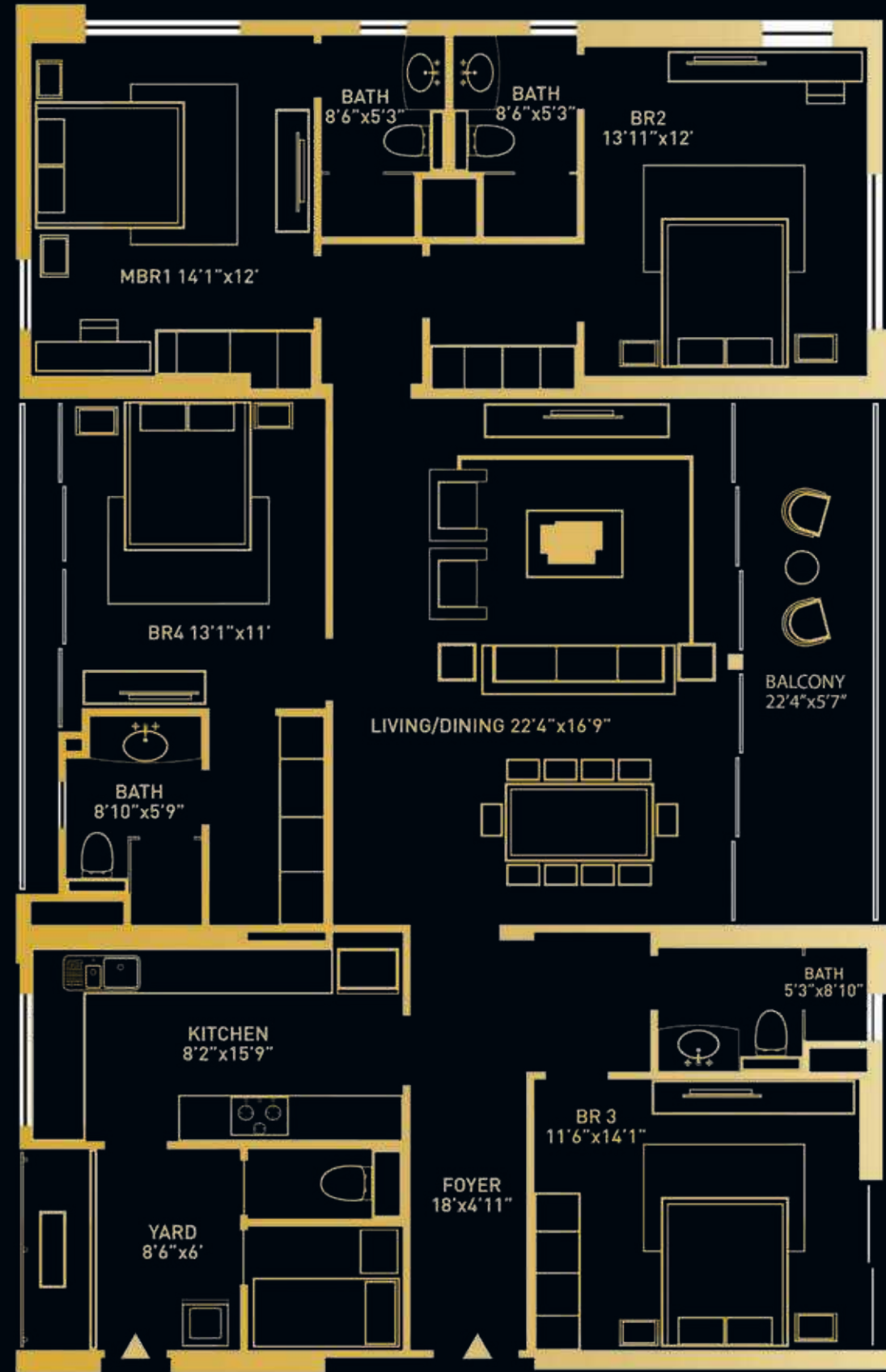


UNIT E  
 3 BHK | SBA 2371 sq.ft.





EVEN FLOORS



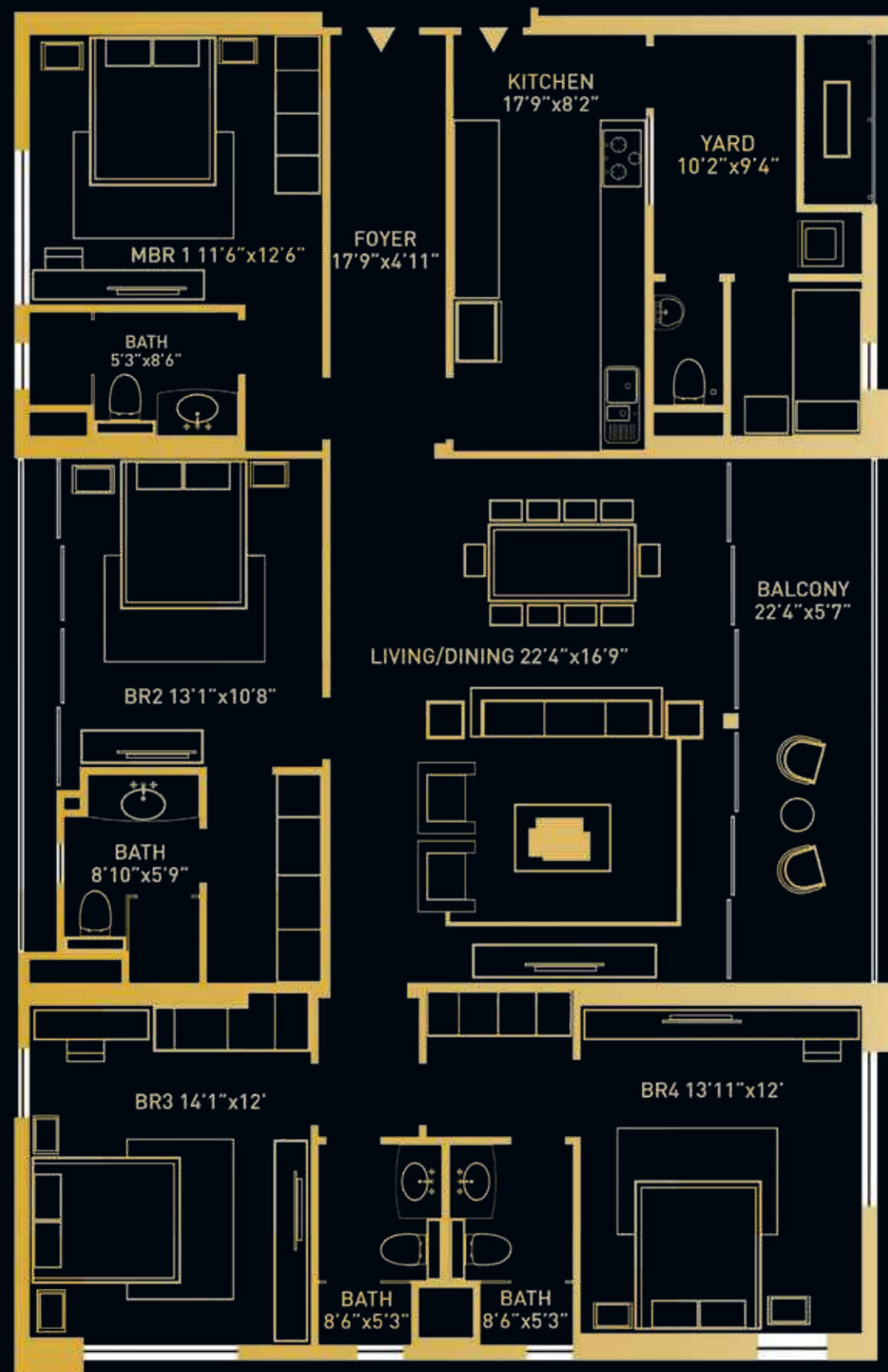
UNIT A  
4 BHK | SBA 2822 sq.ft.



UNIT A LIVING ROOM

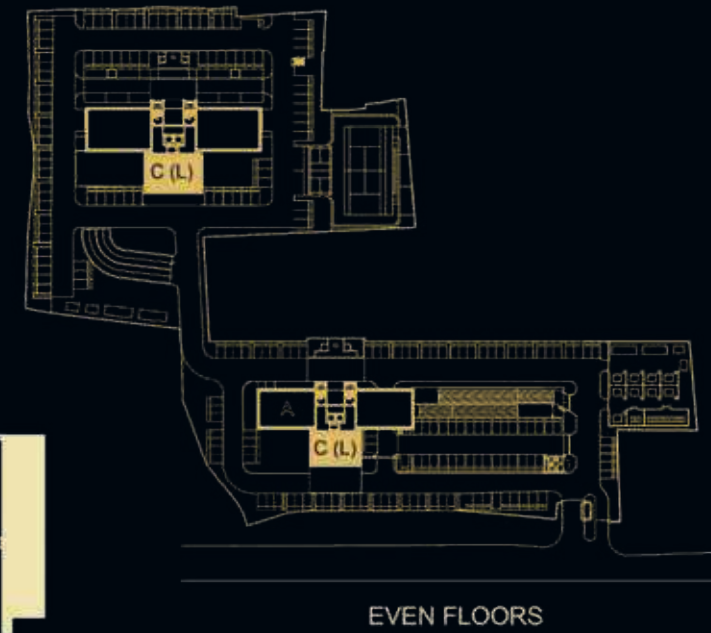
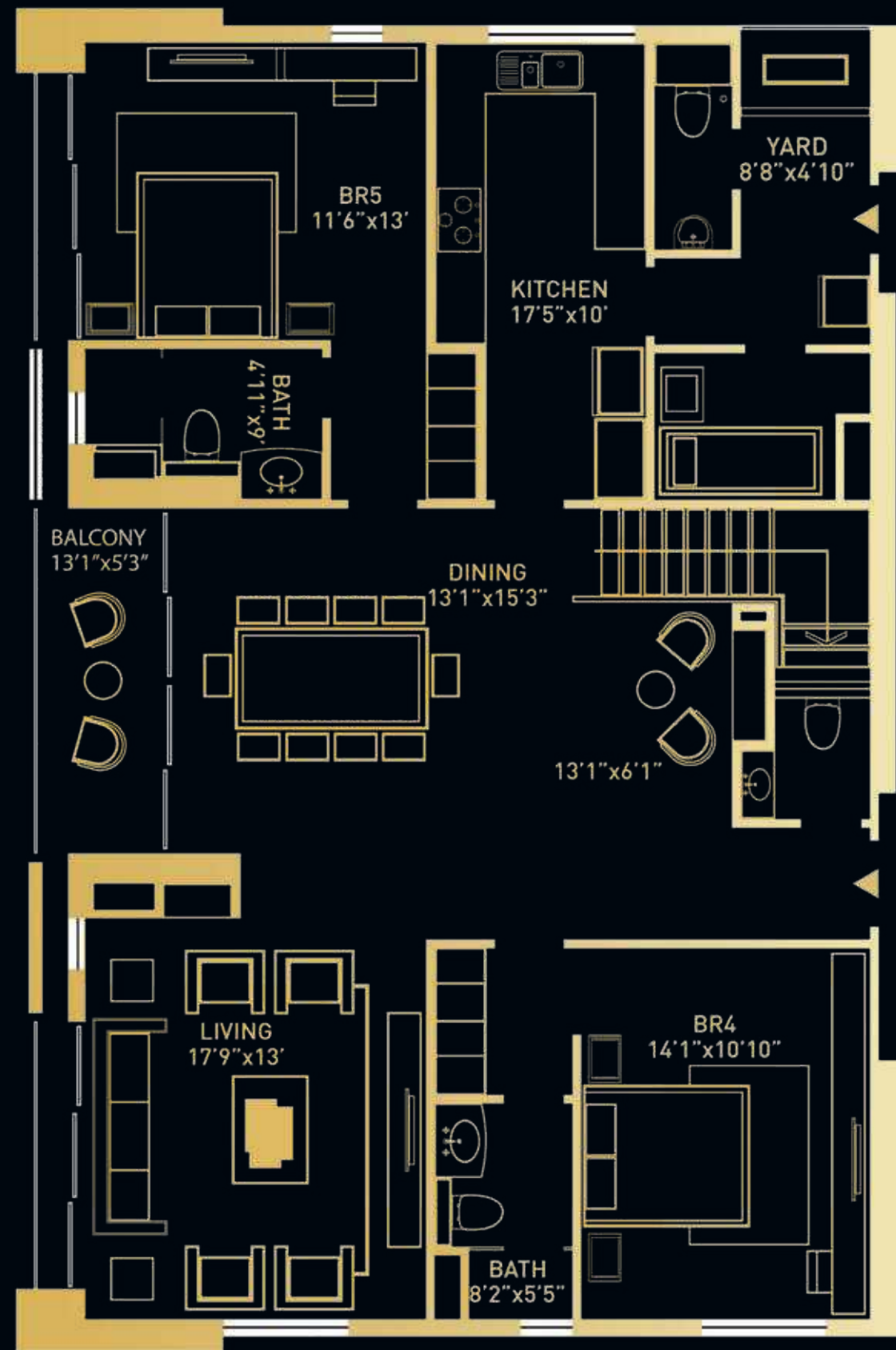


UNIT A BEDROOM



UNIT B  
 4 BHK | SBA 2822 sq.ft.





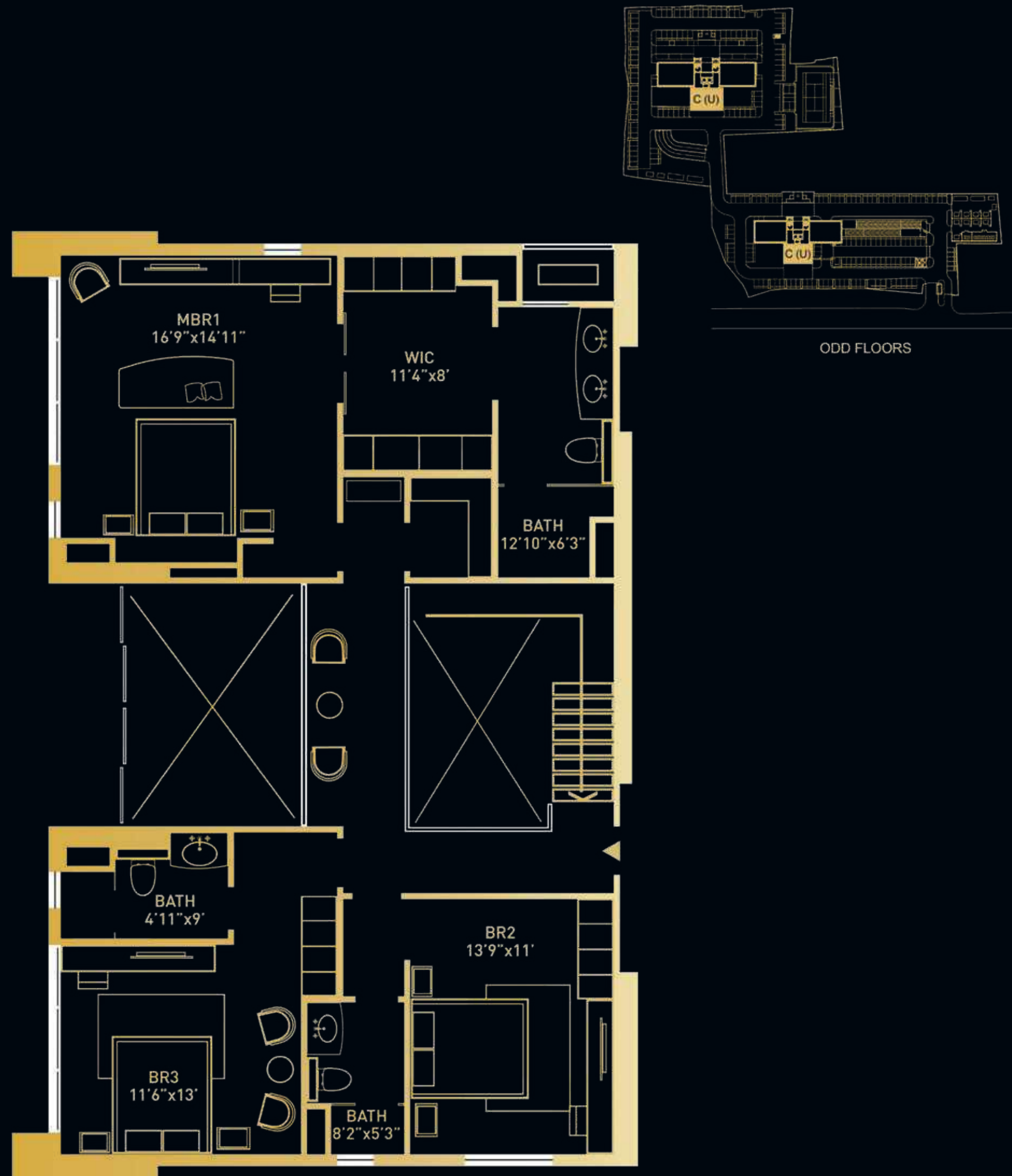
UNIT C: DUPLEX LOWER  
SBA 2226 sq.ft.



UNIT C DINING



UNIT C LIVING ROOM



UNIT C: DUPLEX UPPER  
SBA 1746 sq.ft.



UNIT C DUPLEX



UNIT C WALK-IN CLOSET

