

Locational Map



Smriti Apartment
Sector J, Jankipuram Yojna

Lucknow Development Authority (LDA)

Address

Apartment Section, First Floor, LDA Office, Vipin Khand,
Gomti Nagar, Lucknow, Uttar Pradesh- 226010

Contact

9919563101 (Site Visit) | 7081101301 (Sales Query)
7081100460 (Marketing Team)

Visit: www.ldaonline.co.in

Follow Us @

 @LkoDevAuthority  @LkoDevAuthority  @lda_online



Scan Here for Details

Allotment Under

First Come First Serve Scheme

- Ready to Move
- RERA Approved
- Comparative Higher Carpet Area
- Possession on 25% Payment for Government Employee and 35% Payment for General Public
- On full payment, 6% discount within 45 days to 3% discount within 90 days

*T&C applied

Smriti Apartment

Sector J, Jankipuram Yojna

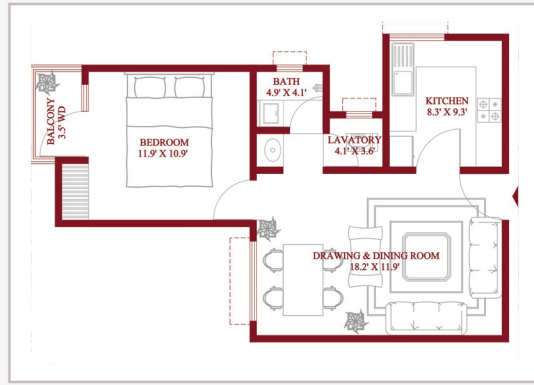
"Elevate Your Lifestyle - Find Your Perfect Home"

UPRERAPRJ7448



Floor Plan

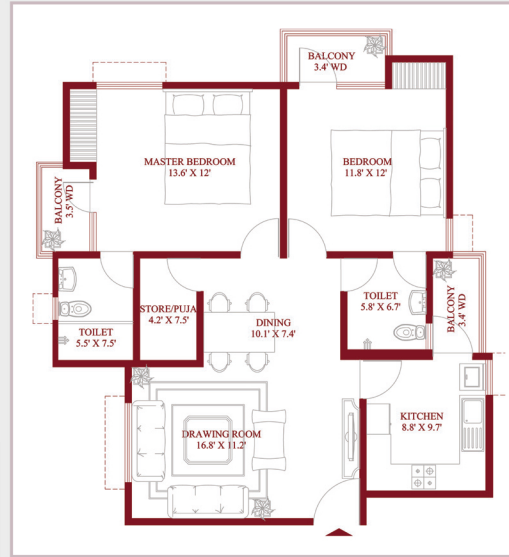
1 BHK



Type C

Total Units : 110 | Area (Sq.ft.) : 681.3 | Unit Cost : 28,25,689

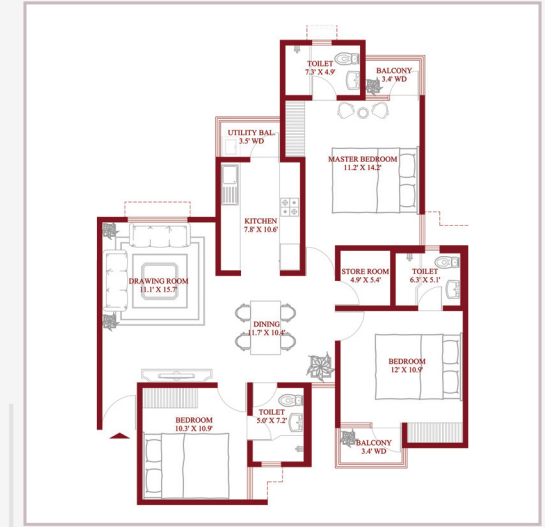
2 BHK



Type-B-1

Total Units : 76 | Area (Sq.ft.) : 1158.6 | Unit Cost : 48,04,287

3 BHK



Type-A-1

Total Units : 76 | Area (Sq.ft.) : 1352.9 | Unit Cost : 56,76,686

Project Brief

- Project Built on Monolithic Structure with Shear wall Technology and Earthquake Resistant
- Smriti Apartment is a G + 18 Floor Structure
- Each floor of Building with 3 BHK Typologies consists of 4 Apartment Units, while that of Buildings with 2BHK and 1 BHK Typologies consists of 6 Apartment Units

Facilities

- 24 X 7 CCTV Security Services
- 24 x 7 Powr Packup
- 24 x 7 Working Lift facilities
- Fire Fighting fcailities available



Club House



Open & Covered parking Parking



Children Play Area with equipments

Type-B-2

Total Units : 76 | Area (Sq.ft.) : 1189.6 | Unit Cost : 49,32,819

Type-A-2

Total Units : 76 | Area (Sq.ft.) : 1354.5 | Unit Cost : 56,66,569