



# SHRESHTA GARDEN

Rajarhat Main Road

**PHASE-III**





### Amenities & Facilities

- Air-conditioned Community Hall
- Well-equipped AC Gym
- AC Games Room
- AC Library
- Children's Play Area
- Landscaped areas with paved pathways
- Generator for common services i.e. lifts, pumps and lighting in common areas
- Water Treatment Plant
- Intercom facility from flat to flat and flat to main security\*
- Car/two wheeler parking space\*
- CCTV

\*At extra cost

### Specifications

- Foundation** : RCC pile foundation
- Super structure** : RCC frame structure with infill brick walls
- Internal walls** : Brick walls with sand cement plastering and POP finish
- Flooring** : Vitrified floor tiles in bedrooms / living / dining and common areas
- Kitchen** : Floor vitrified / ceramic tiles, black granite kitchen platform with steel sink and glazed ceramic tiles upto 2 ft above the platform
- Toilet** : Ceramic tile flooring, ceramic tiles in Dados up to 7 ft height
- Windows** : Sliding anodized aluminium windows with glass and fittings
- Doors** : Polished panel door at main entrance with night latch, solid core flush door with enamel paint for other doors
- Sanitaryware** : White porcelain Parryware / Cera fittings matched with chromium plated Jaquar or equivalent fittings. Geyser point in all bathrooms and one washing machine point
- Electricals** : Concealed insulated copper wiring, semi modular switches, AC point in Master bedroom, TV / Telephone points in living and master bedroom
- Lift** : OTIS or KONE or equivalent make
- Exterior** : Finish with weather guard paint

### Typical Floor Plan of Orchid Block

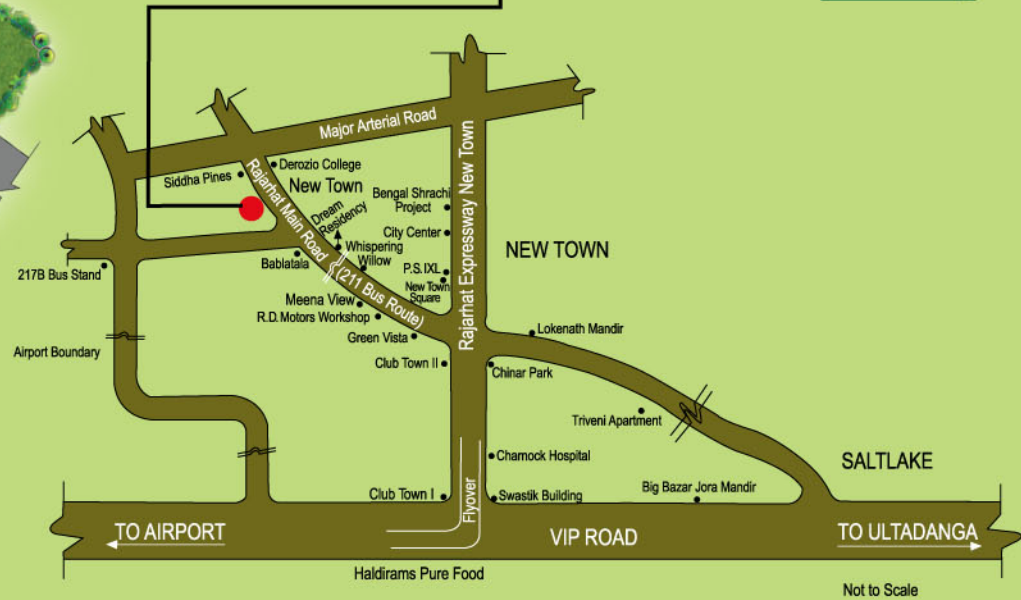


Ground Floor Plan



Site: Kali Park, Gopalpur  
Rajarhat Main Road, Kolkata - 700 136

Location Map



Developer



Neotia Niket, EC-13, Salt Lake City, Kolkata- 700 064  
 Phone: +91 33 2321 5846  
 Fax: +91 33 2334 4798  
 E-mail: info@shreshta-group.com  
 Web: www.shreshta-group.com  
 FMC Fortuna, Block-A11, 234 AIC Bose Road  
 4th floor, Kolkata 700 020

Marketed by:



9, Elgin Road (4th Floor)  
 Kolkata - 700 020, India  
 E-mail: sales@nkrealtors.com  
 Web: www.nkrealtors.com

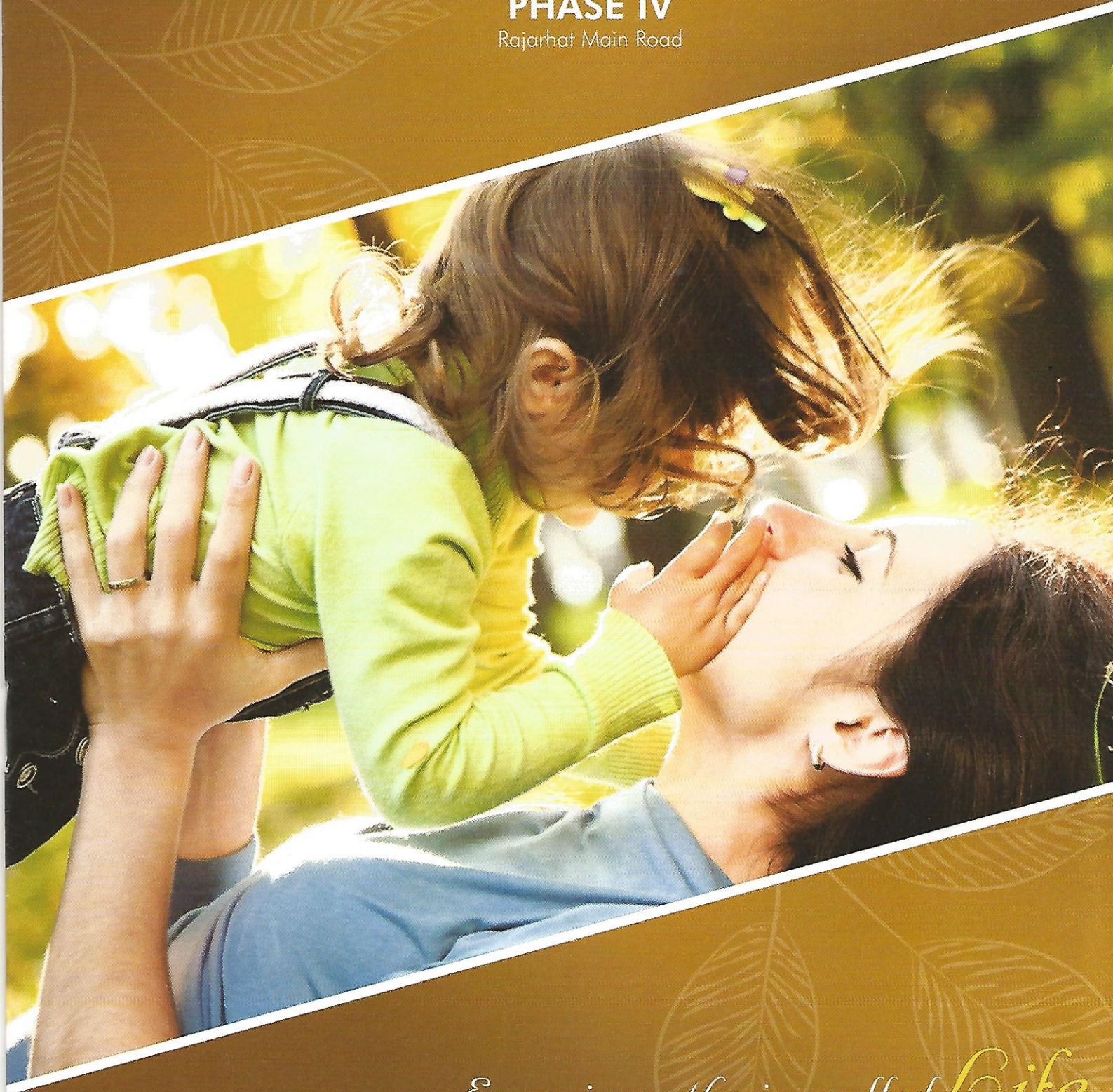
**Call: 033 4040 1010 / 6620 1010**



# SHRESHTA GARDEN

PHASE IV

Rajarhat Main Road



Experience the joy called *Life*



# SHRESHTA GARDEN

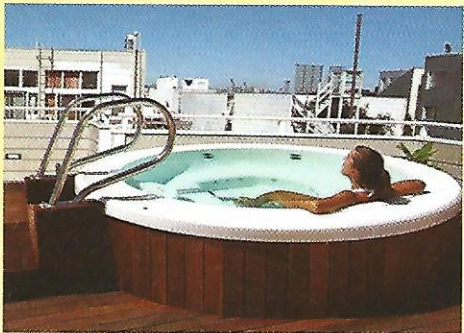
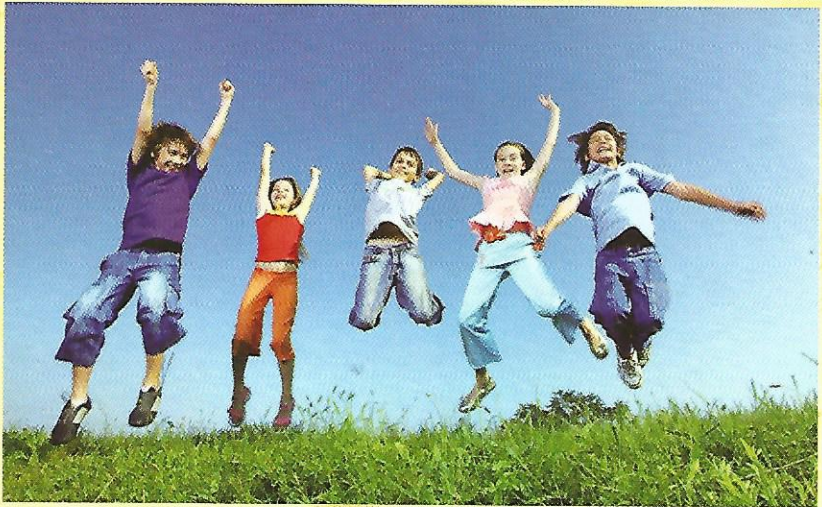
Rajarhat Main Road



A self-contained complex with more than 150 families residing in it, **SHRESHTA GARDEN** is a milestone in its own right on Rajarhat Main Road in terms of its quality and aesthetics. The Phase IV of the complex is set to add another feather in the cap for **SHRESHTA GARDEN**.

So, be the next to own an apartment at **SHRESHTA GARDEN** and celebrate countless





## Amenities & Facilities

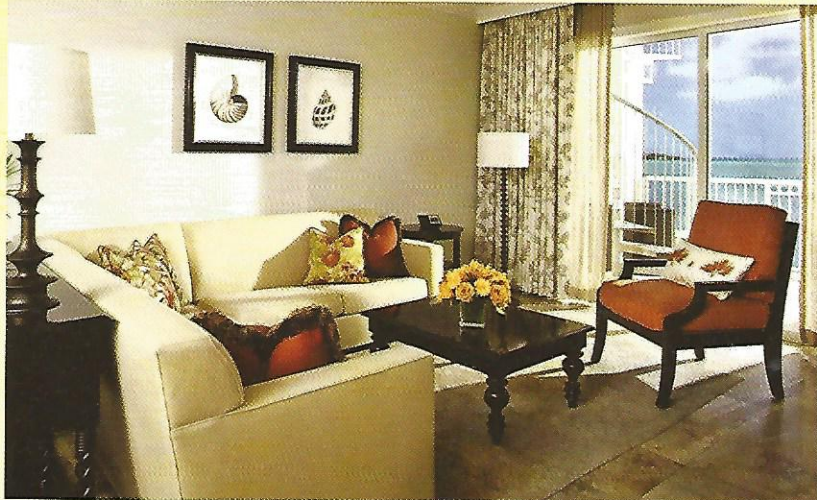
- Rooftop Jacuzzi
- AC Community Hall
- Well-equipped AC Gymnasium
- AC Games Room
- AC Library
- Children's Play Area
- Landscaped areas with paved pathways
- Convenience Store
- 24hr Power Back-up
- Water Treatment Plant
- Intercom facility & CCTV
- Car/two-wheeler parking





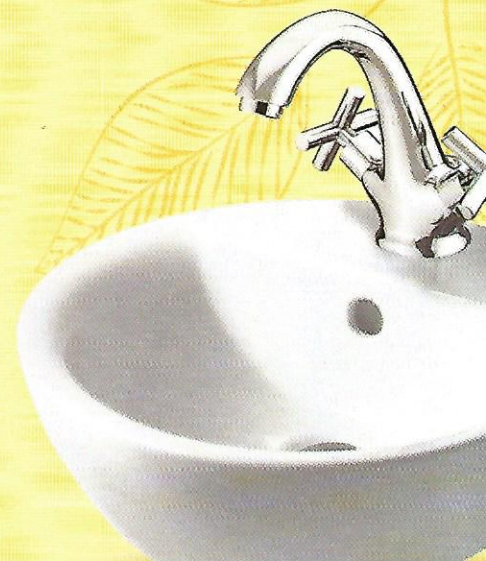
# SHRESHTHA GARDEN

Rajarhat Main Road



## Specifications

<b>Foundation</b>	RCC pile foundation
<b>Super Structure</b>	RCC frame structure with infill brick walls
<b>Internal walls</b>	Brick walls with sand cement plastering and POP finish
<b>Flooring</b>	Vitrified floor tiles in bedrooms / living / dining and common areas
<b>Kitchen</b>	Anti-skid vitrified / ceramic tiles for flooring, black granite kitchen platform with steel sink and glazed ceramic tiles upto 2ft above the platform
<b>Toilet</b>	Anti-skid ceramic tile flooring, ceramic tiles in Dados up to 7ft height
<b>Windows</b>	Sliding anodized aluminium windows with glass and fittings
<b>Doors</b>	Main entrance with night latch, solid core flush door with paint for other doors
<b>Sanitaryware</b>	White porcelain Parryware / Cera fittings matched with chromium plated Jaquar or equivalent fittings
<b>Bathrooms</b>	Geyser point in all and one washing machine point
<b>Electricals</b>	Concealed insulated copper wiring, modular switches, AC point in master bedroom, TV / Telephone points in living and master bedroom
<b>Lift</b>	OTIS or KONE or equivalent make



# Ground Floor Plan



Site Address:

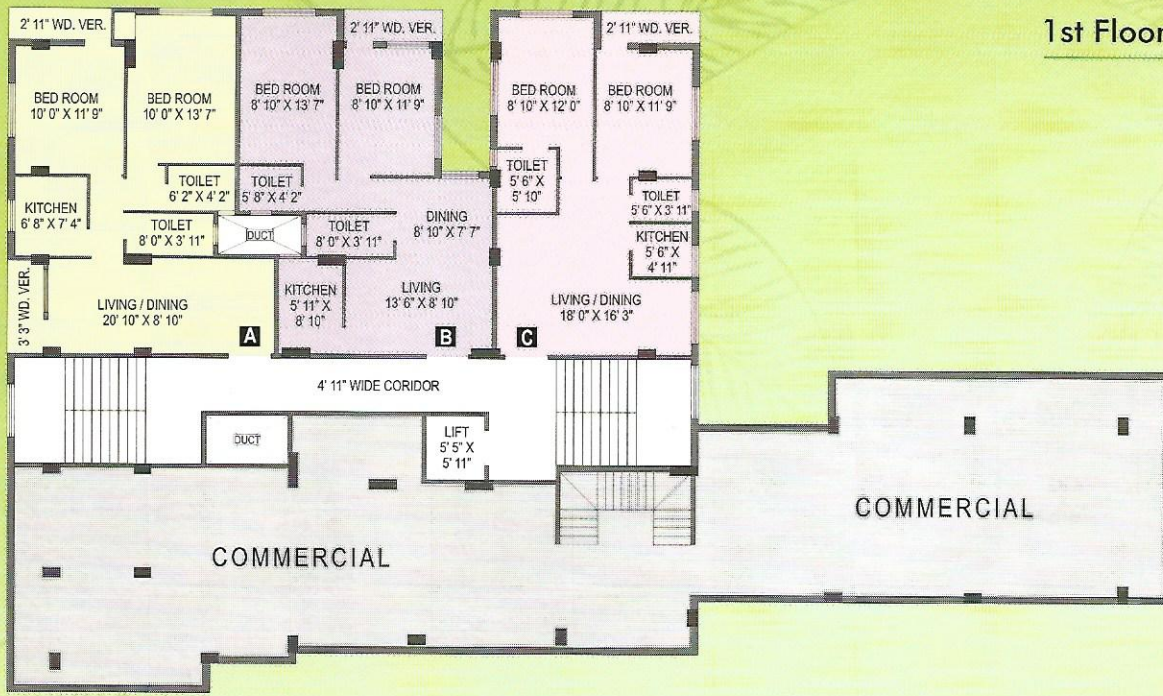
Kali Park, Gopalpur, Rajarhat Main Road  
Kolkata - 700 136

## Typical Floor Plan Block E (Orchid)



FLAT	SALEABLE AREA
A	1100 sq ft
B	1224 sq ft
C	1121 sq ft
D	1087 sq ft

## 1st Floor Plan Block F (Daffodil)



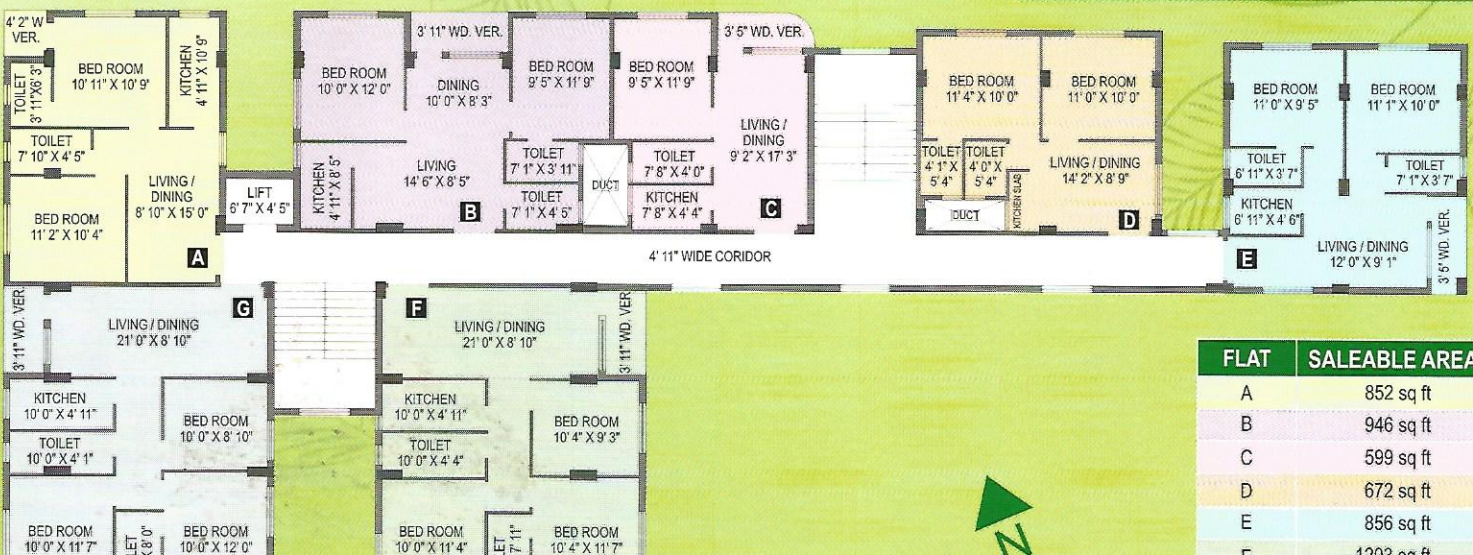
FLAT	SALEABLE AREA
A	1005 sq ft
B	901 sq ft
C	870 sq ft

## 2nd to 5th Floor Plan Block F (Daffodil)



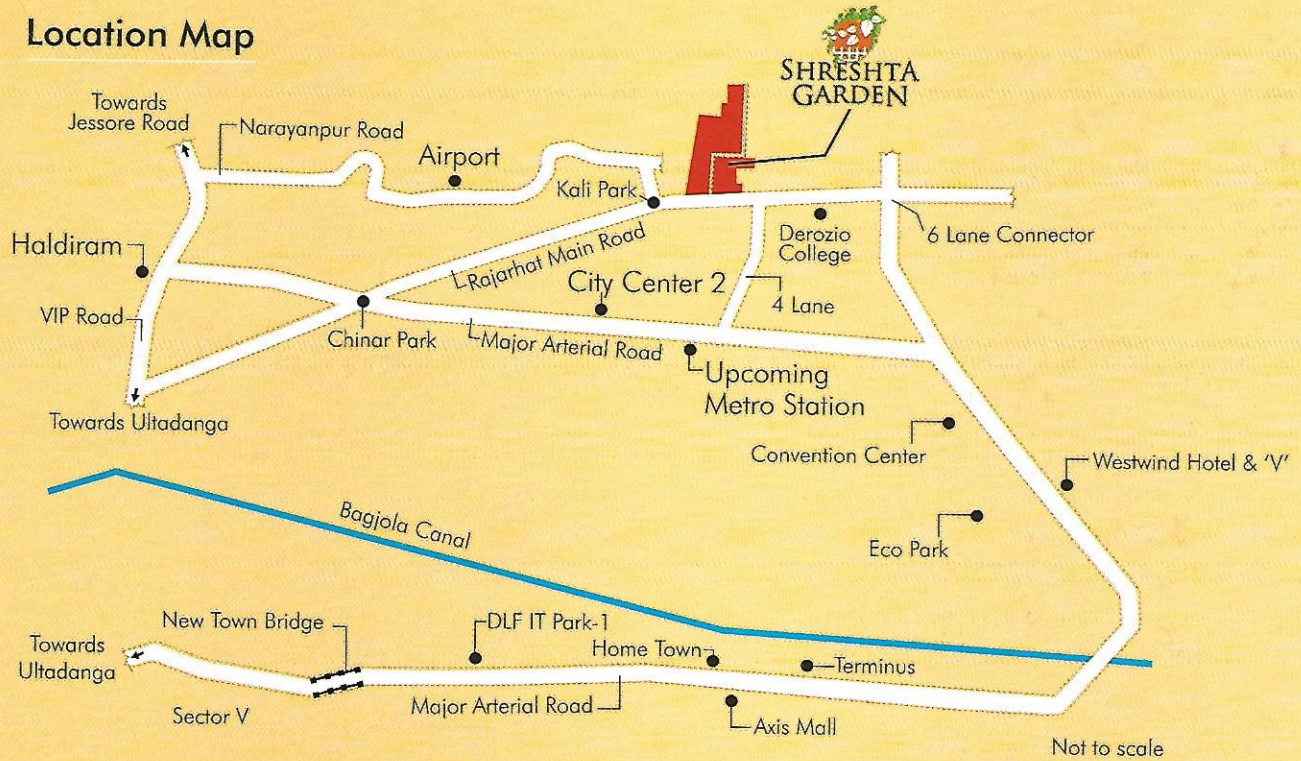
FLAT	SALEABLE AREA
A	1005 sq ft
B	901 sq ft
C	870 sq ft
D	1504 sq ft
E	1387 sq ft

## Typical Floor Plan Block G (Tulip)



FLAT	SALEABLE AREA
A	852 sq ft
B	946 sq ft
C	599 sq ft
D	672 sq ft
E	856 sq ft
F	1203 sq ft
G	1203 sq ft

## Location Map



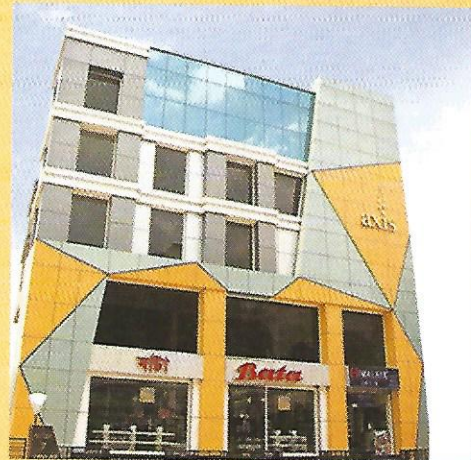
### KEY DISTANCES

- Airport - 3.3 km
- City Centre II - 1.8 km
- VIP Road - 2.8 km
- Upcoming Metro Station - 1.5 km

## Other Projects

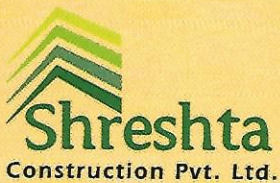


Shreshtha Priya, Bhawanipore



Axis, Barasat

Developer:



Neotia Niket  
EC-13, Salt Lake City, Kolkata- 700 064  
URL: [www.shreshtha-group.com](http://www.shreshtha-group.com)

29, Elgin Road, Kolkata - 700 020

**Call:**

**93318 37128**

**98311 18005**

Architect:

S.R. Foundation

Solicitors:

Subir Kumar Seal & Associates