

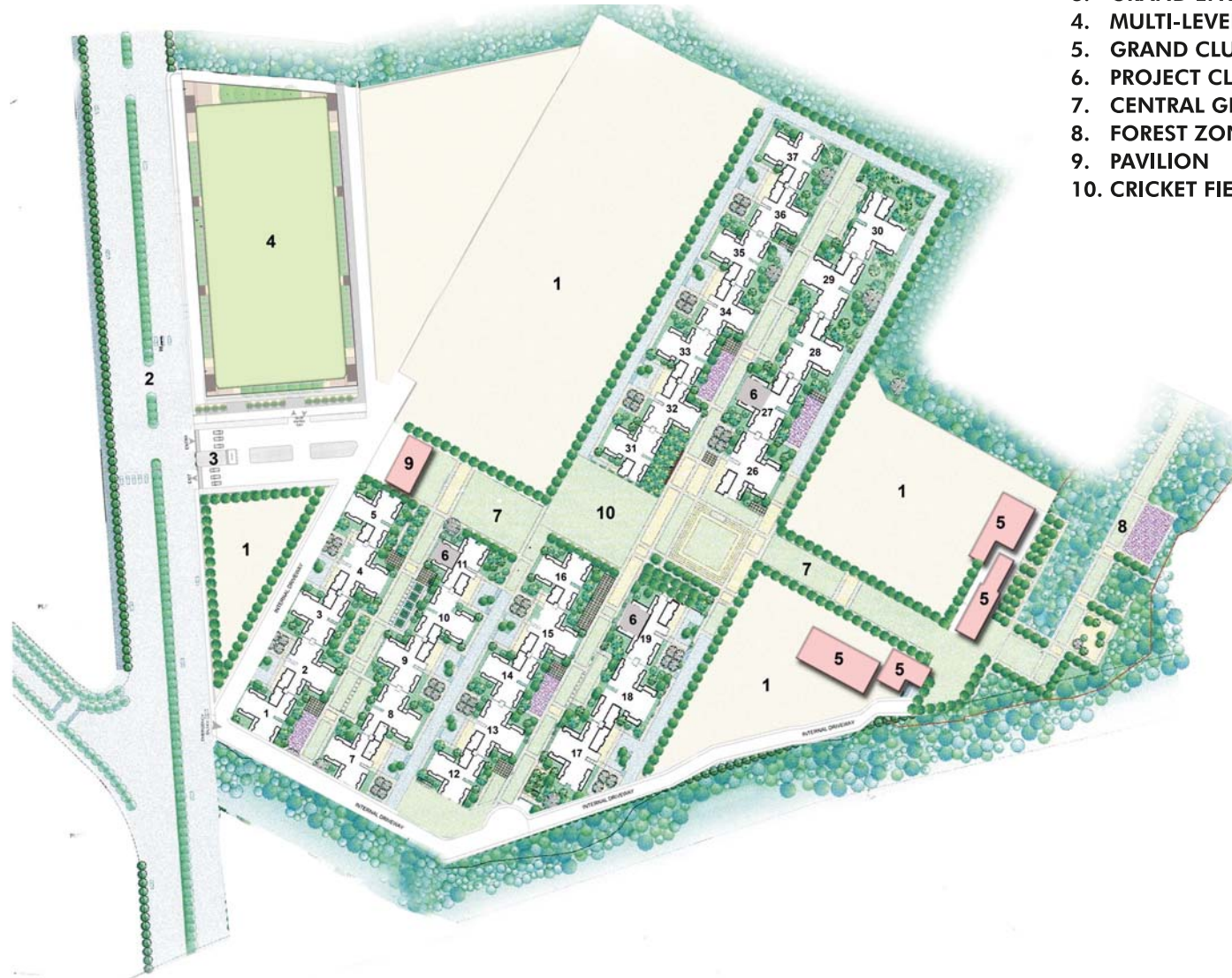
ALLOTMENT COMPANION



AMĀRA

Do more. Live more.

Development Plan



LEGEND

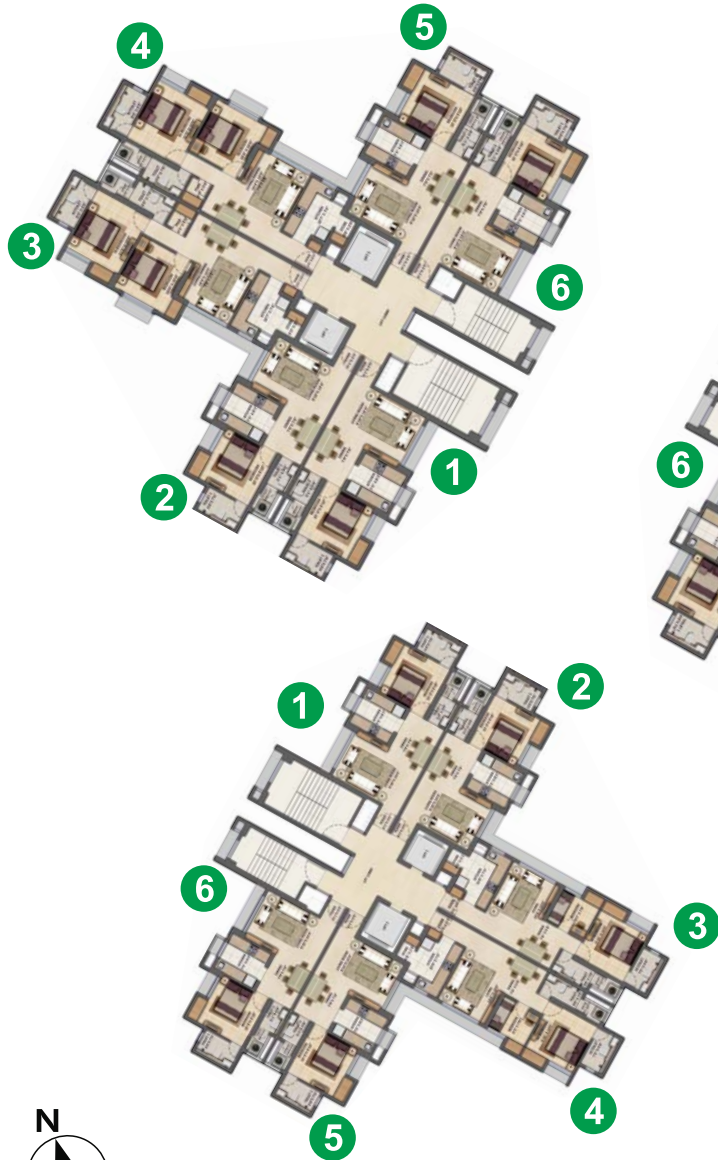
1. FUTURE DEVELOPMENT
2. 6 LANE KOLSHET ROAD
3. GRAND ENTRANCE
4. MULTI-LEVEL CAR PARK WITH SPORTS TERRACE
5. GRAND CLUB
6. PROJECT CLUBHOUSE
7. CENTRAL GREEN
8. FOREST ZONE
9. PAVILION
10. CRICKET FIELD

Indicative - subject to change



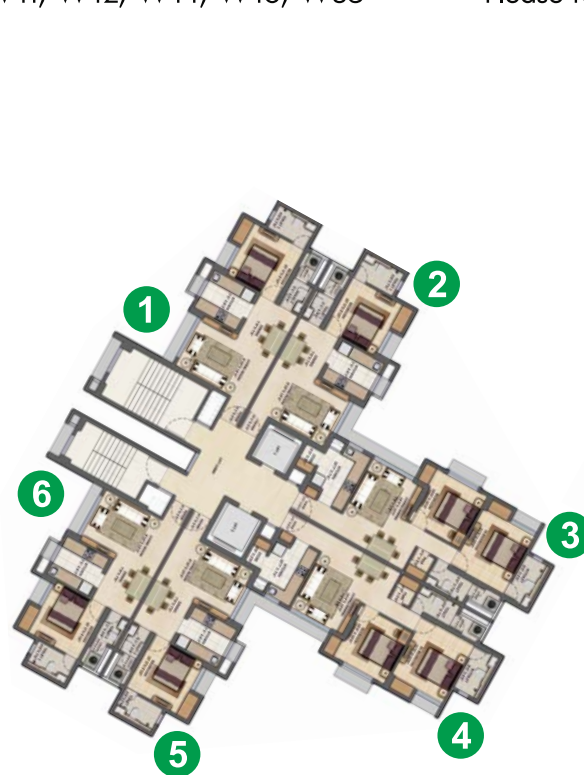
Typical Floor Plans

Please refer for wings: W1, W3, W5, W7, W9, W11, W12, W14, W16, W35



Please refer for wings: W2, W4, W8, W10, W13, W15

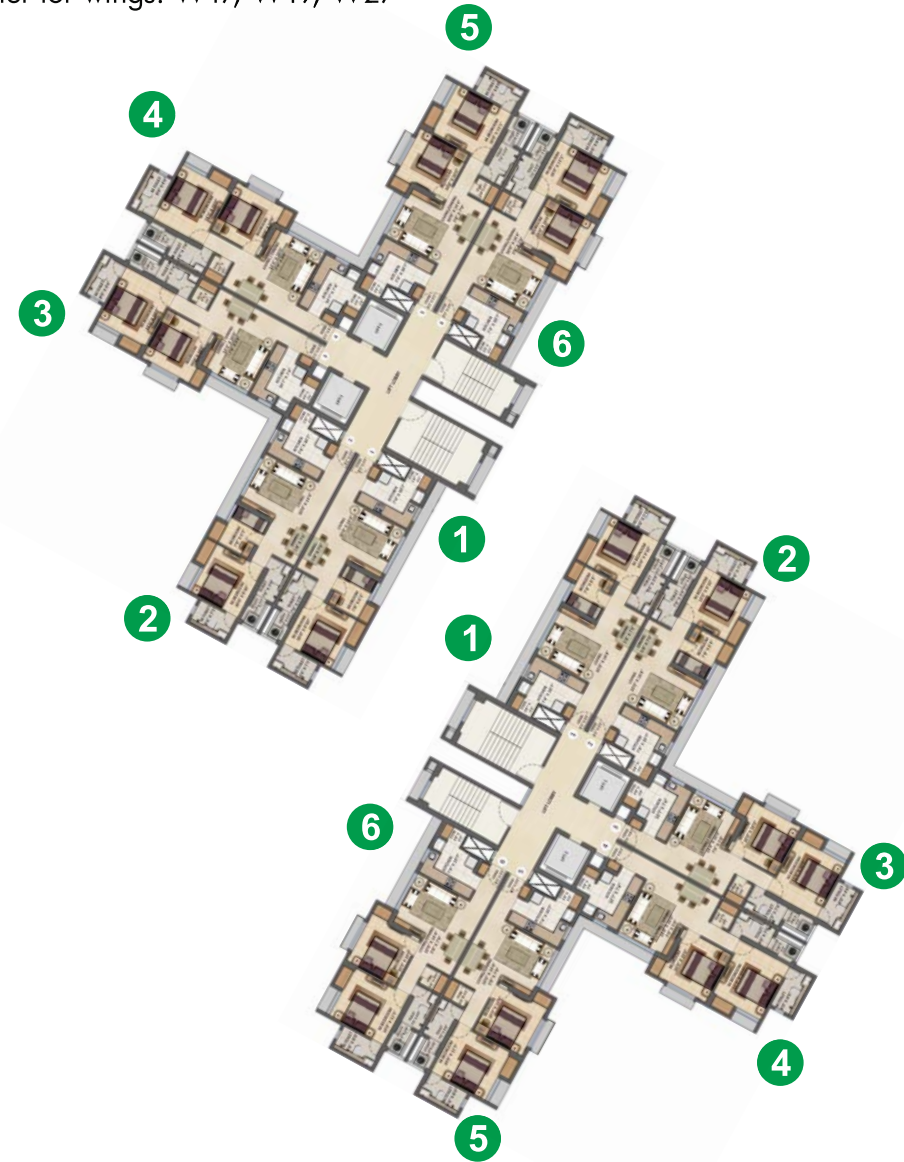
Please refer for wings: W17, W19, W27



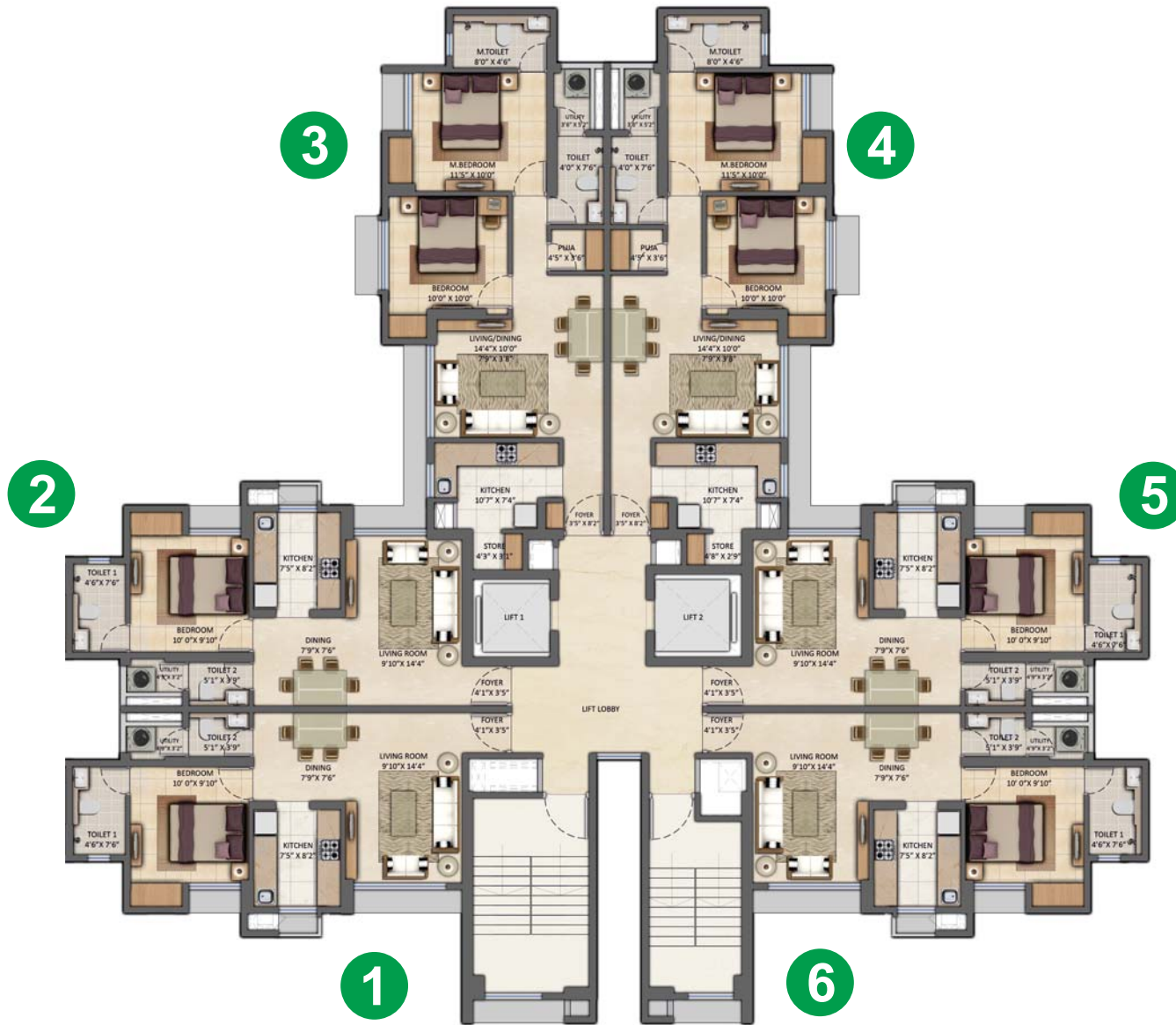
Please refer for wings: W34



Please refer for wing: W18, W26, W28, W30



Floor Plan: 1 BHK + 2 BHK Ultima



Please refer for wings: W1, W3, W5, W7, W9, W11, W12, W14, W16, W35



Please refer for wings: W34

Unit Plan: Apartment No. ending with 1

Typology: 1 BHK

1



Please refer for wings: W1, W3, W5, W7, W9, W11, W12, W14, W16, W35



Please refer for wings: W34

Unit Plan: Apartment No. ending with 2

Typology: 1 BHK

2



Please refer for wings: W1, W3, W5, W7, W9, W11, W12, W14, W16, W35



Please refer for wings: W34

Unit Plan: Apartment No. ending with 3

Typology: 2 BHK Ultima

3



Please refer for wings: W1, W3, W5, W7, W9, W11, W12, W14, W16, W35



Please refer for wings: W34

Unit Plan: Apartment No. ending with 4

Typology: 2 BHK Ultima

4



Please refer for wings: W1, W3, W5, W7, W9, W11, W12, W14, W16, W35



Please refer for wings: W34

Unit Plan: Apartment No. ending with 5

Typology: 1 BHK

5



Please refer for wings: W1, W3, W5, W7, W9, W11, W12, W14, W16, W35



Please refer for wings: W34

Unit Plan: Apartment No. ending with 6

Typology: 1 BHK

6

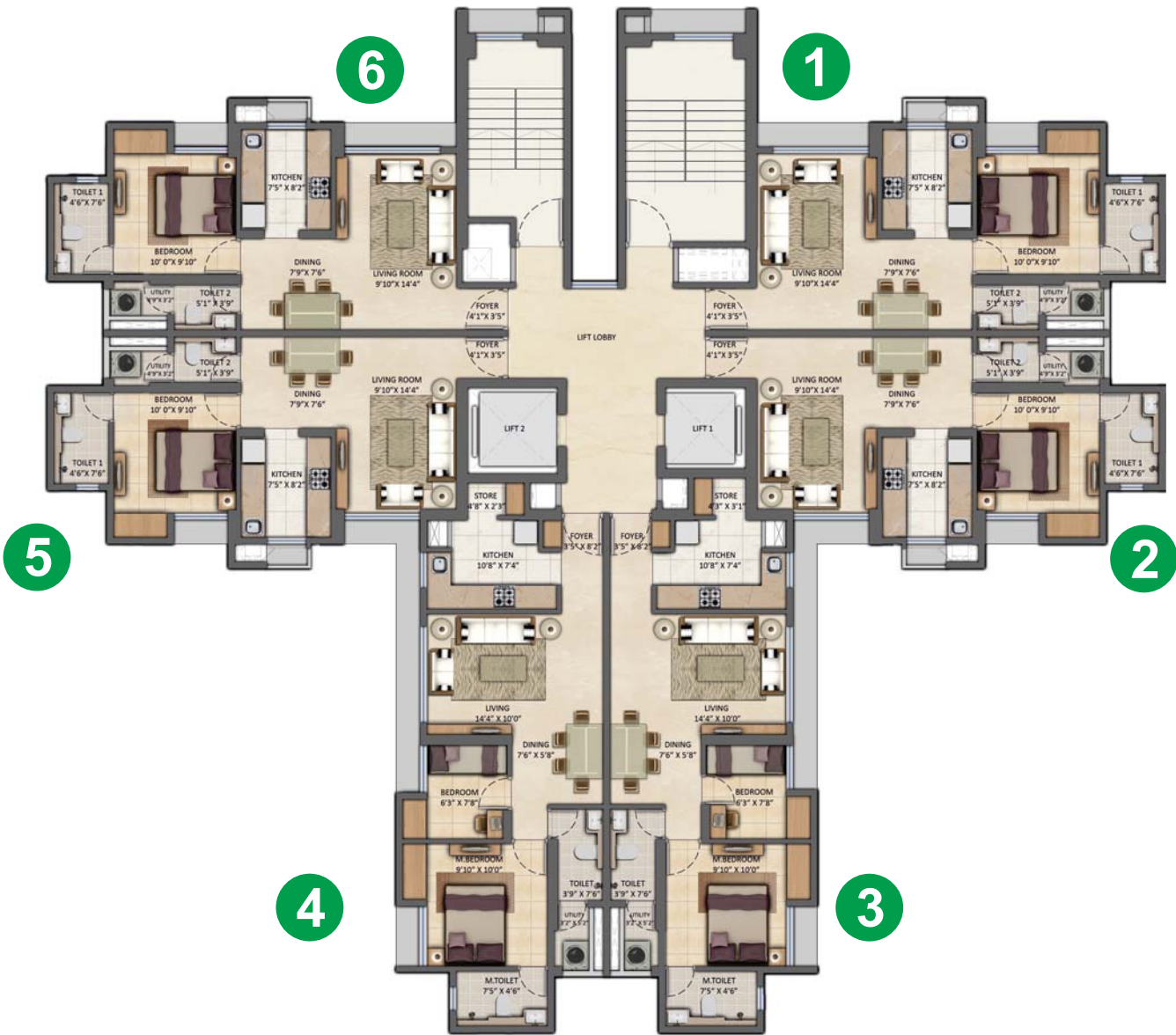


Please refer for wings: W1, W3, W5, W7, W9, W11, W12, W14, W16, W35



Please refer for wings: W34

Floor Plan: 1 BHK + 2 BHK Optima



Please refer for wings: W2, W4, W8, W10, W13, W15

Unit Plan: Apartment No. ending with 1

Typology: 1 BHK

1



Please refer for wings: W2, W4, W8, W10, W13, W15

Unit Plan: Apartment No. ending with 2

Typology: 1 BHK

2

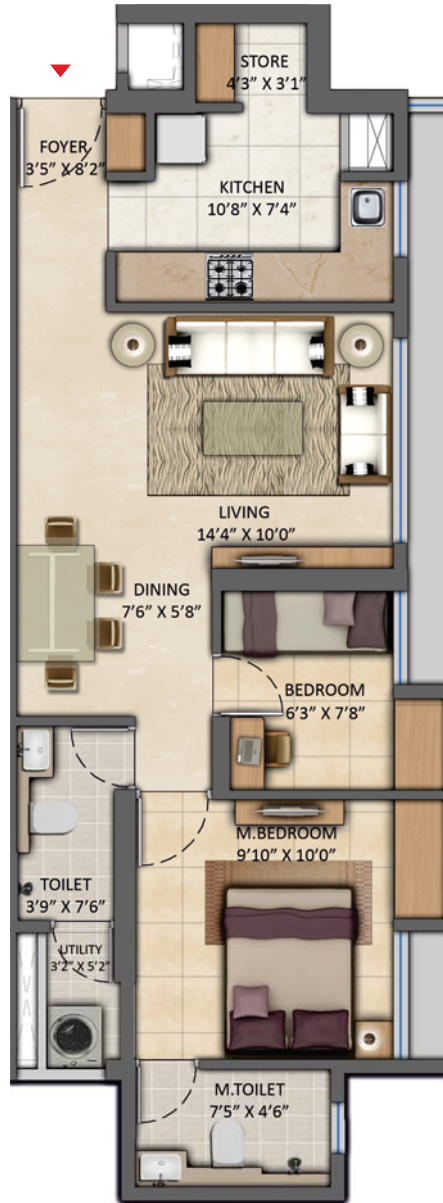


Please refer for wings: W2, W4, W8, W10, W13, W15

Unit Plan: Apartment No. ending with 3

Typology: 2 BHK Optima

3

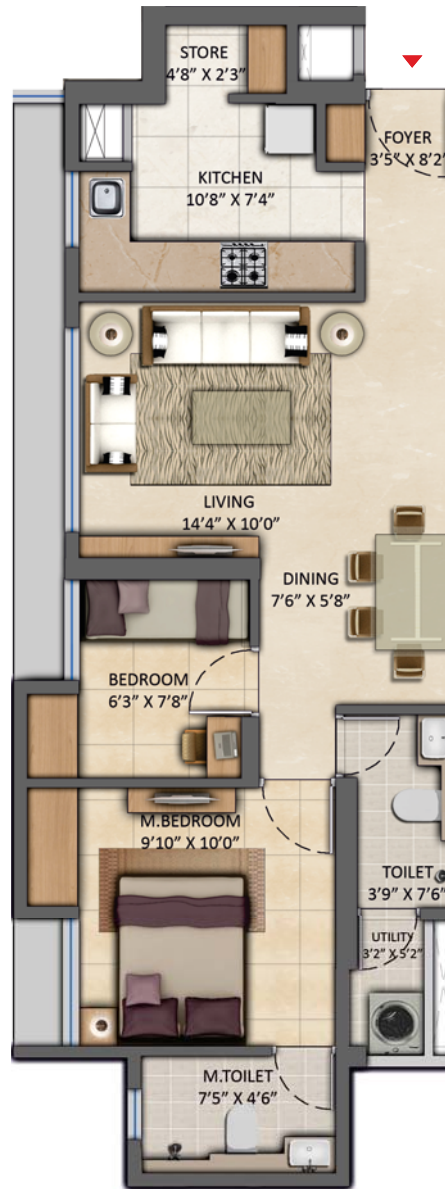


Please refer for wings: W2, W4, W8, W10, W13, W15

Unit Plan: Apartment No. ending with 4

Typology: 2 BHK Optima

4



Please refer for wings: W2, W4, W8, W10, W13, W15

Unit Plan: Apartment No. ending with 5

Typology: 1 BHK

5



Please refer for wings: W2, W4, W8, W10, W13, W15

Unit Plan: Apartment No. ending with 6

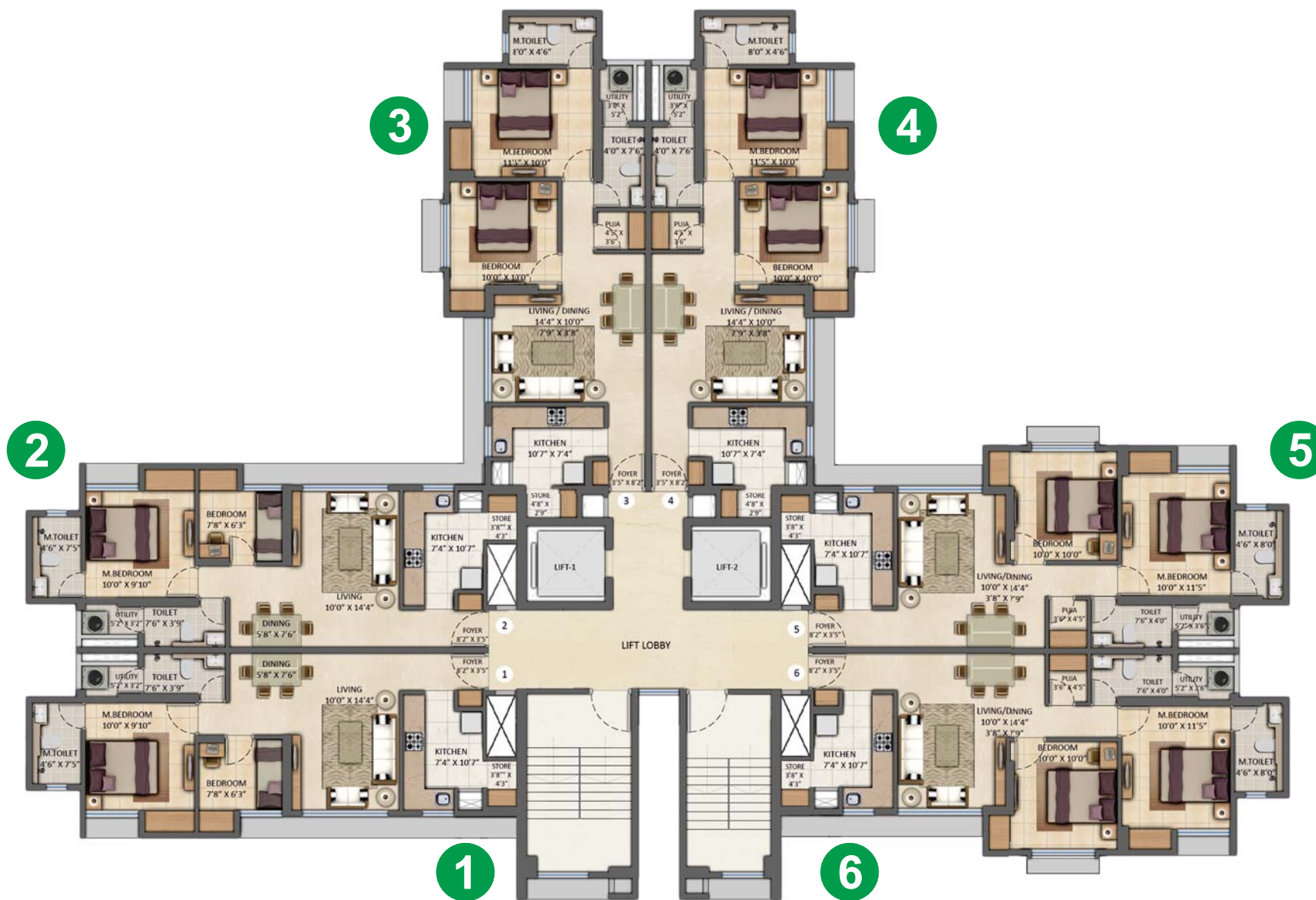
Typology: 1 BHK

6



Please refer for wings: W2, W4, W8, W10, W13, W15

Floor Plan: 2 BHK Optima + 2 BHK Ultima



Please refer for wings: W17, W19, W27

Unit Plan: Apartment No. ending with 1

Typology: 2 BHK Optima

1



Please refer for wings: W17, W19, W27

Unit Plan: Apartment No. ending with 2

Typology: 2 BHK Optima

2



Please refer for wings: W17, W19, W27

Unit Plan: Apartment No. ending with 3

Typology: 2 BHK Ultima

3



Please refer for wings: W17, W19, W27

Unit Plan: Apartment No. ending with 4

Typology: 2 BHK Ultima

4

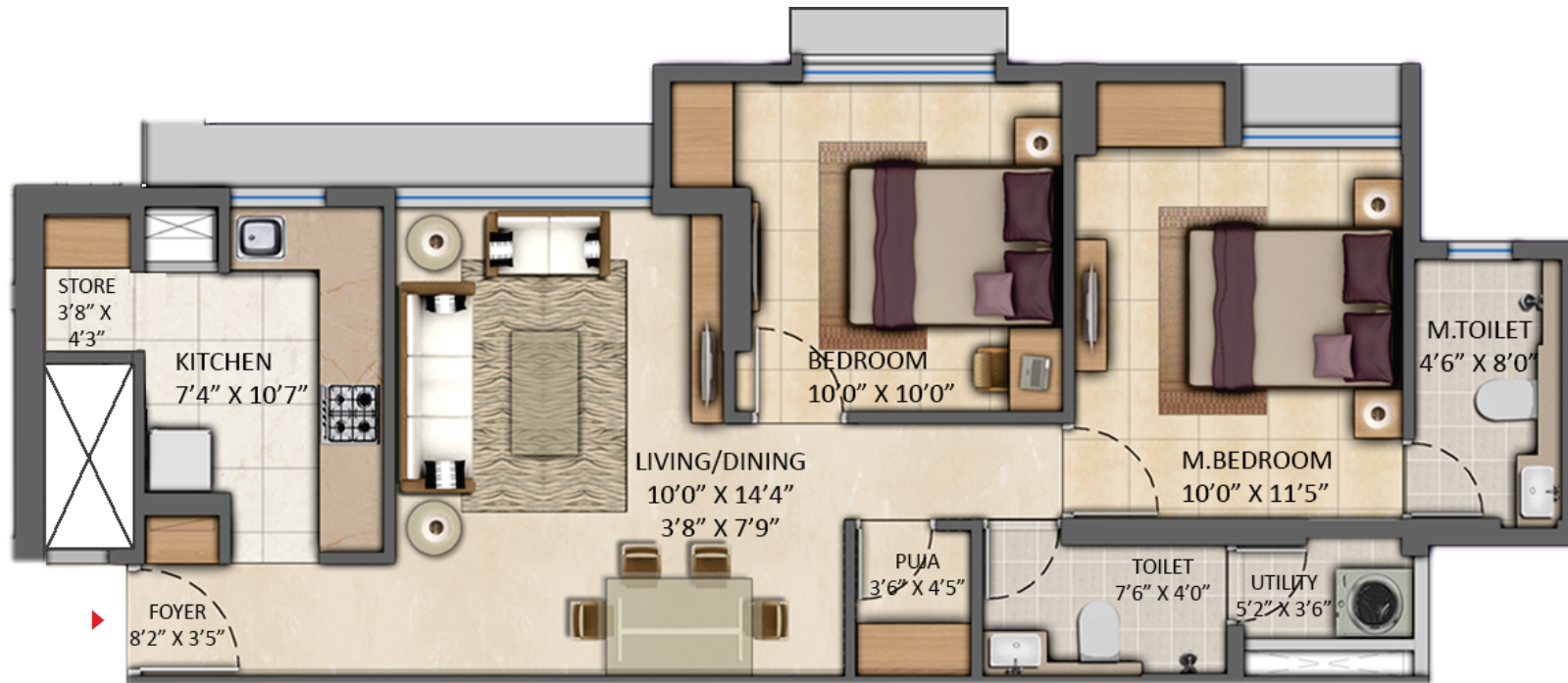


Please refer for wings: W17, W19, W27

Unit Plan: Apartment No. ending with 5

Typology: 2 BHK Ultima

5

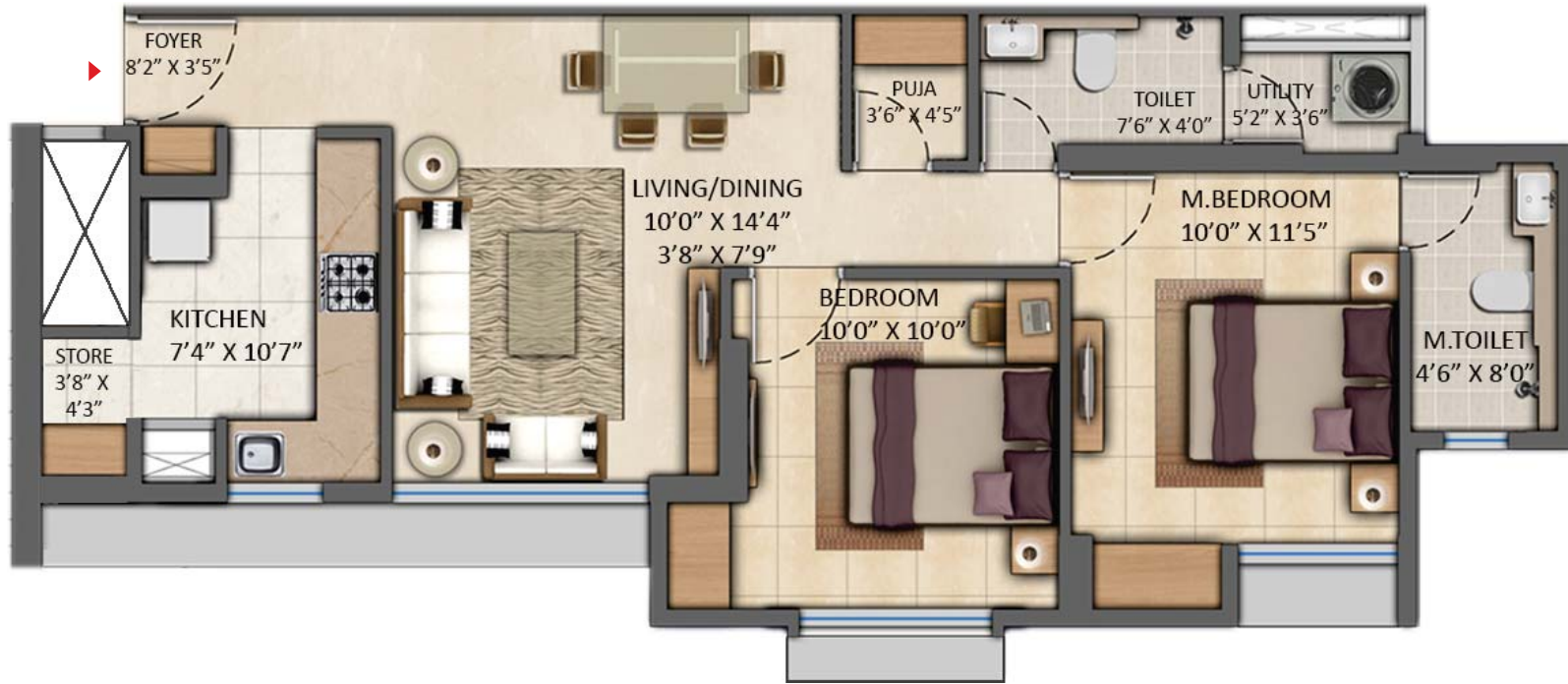


Please refer for wings: W17, W19, W27

Unit Plan: Apartment No. ending with 6

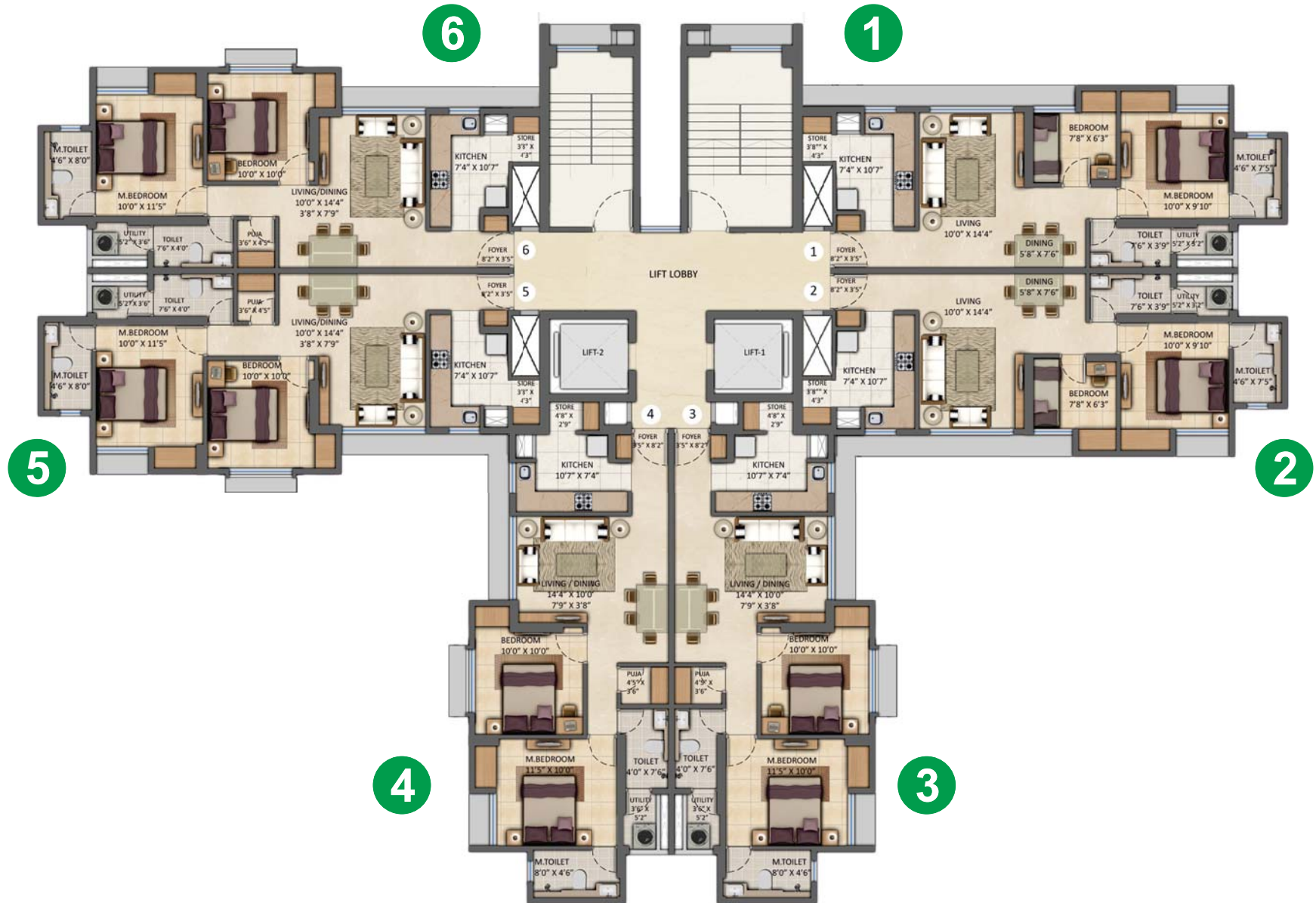
Typology: 2 BHK Ultima

6



Please refer for wings: W17, W19, W27

Floor Plan: 2 BHK Optima + 2 BHK Ultima



Please refer for wing: W18, W26, W28, W30

Unit Plan: Apartment No. ending with 1

Typology: 2 BHK Optima

1



Please refer for wing: W18, W26, W28, W30

Unit Plan: Apartment No. ending with 2

Typology: 2 BHK Optima

2

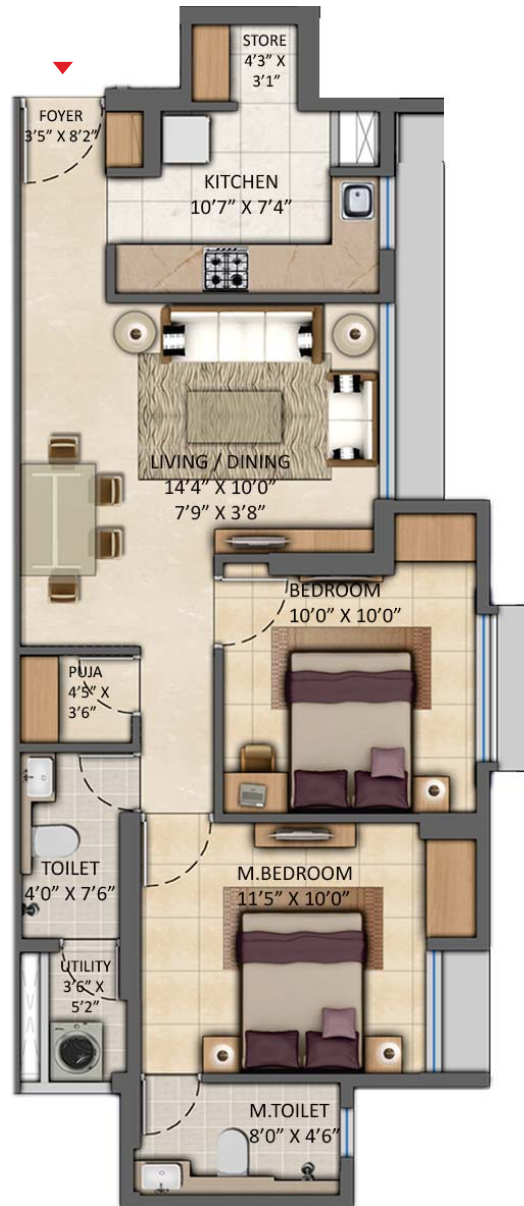


Please refer for wing: W18, W26, W28, W30

Unit Plan: Apartment No. ending with 3

Typology: 2 BHK Ultima

3



Please refer for wing: W18, W26, W28, W30

Unit Plan: Apartment No. ending with 4

Typology: 2 BHK Ultima

4



Please refer for wing: W18, W26, W28, W30

Unit Plan: Apartment No. ending with 5

Typology: 2 BHK Ultima

5

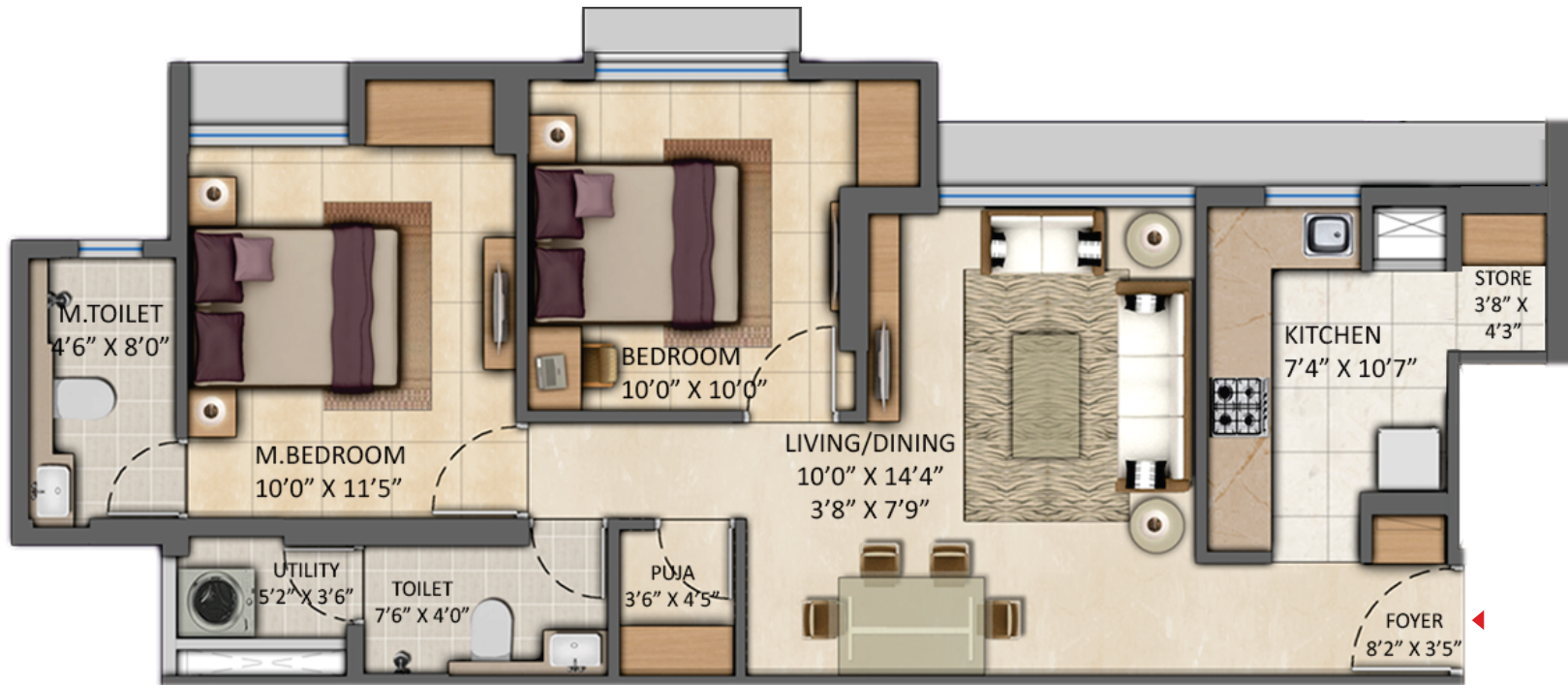


Please refer for wing: W18, W26, W28, W30

Unit Plan: Apartment No. ending with 6

Typology: 2 BHK Ultima

6



Please refer for wing: W18, W26, W28, W30

FREQUENTLY ASKED QUESTIONS

Frequently Asked Questions

1. Q. What is the next step expected from me?
A. Shortly, your dedicated Relationship Manager will give you a gentle reminder call for registration formalities and future payments.
2. Q. Will I get a printed allotment letter?
A. We have despatched a printed provisional allocation letter. However, on your fulfilment of the first payment milestone, you will receive a hard copy allotment letter format as well as e-mail.
3. Q. When can I register?
A. Immediately post your first payment on the 21st day from allotment email, you should be ready for registration. Your relationship manager will call you soon for detailing out the formalities.
4. Q. Some of my personal details mentioned in the e-mail need to be updated. What should I do?
A. You may please get in touch with our Sales Manager whose contact details have been shared with you over email and via a letter. They shall be happy to help you with the changes as well as other queries you may have.
5. Q. I have been allocated a unit as per this communication. How do I locate it on the project?
A. Kindly refer to page 2 of this document to locate your unit.
6. Q. How can I upgrade / change my unit from the one allotted to me?
A. On account of the computerized allocation process and overwhelming oversubscription across all units, we will not be able to accommodate any request for change in configuration/floor/unit.
7. Q. What can I do if I am not able to proceed further due to personal exigencies?
A. In the unfortunate scenario that you would not like to proceed with the unit, you can cancel your application in line with Clause 10 of your application form by sending an email to cancellation.amara@lodhagroup.com within the next 72 hours of this email. Owing to the phenomenal oversubscription, we request you to intimate your decision to us, so that we are able to allot a dream home to other prospective buyers. The subject line should state "Cancellation of Application" and the "Application Number" should be stated in the body of the email. Any other form of request for cancellation shall not be valid.

PLANS BOOK



A M Ā R A

Do more. Live more.

DEVELOPMENT PLAN

LEGENDS:

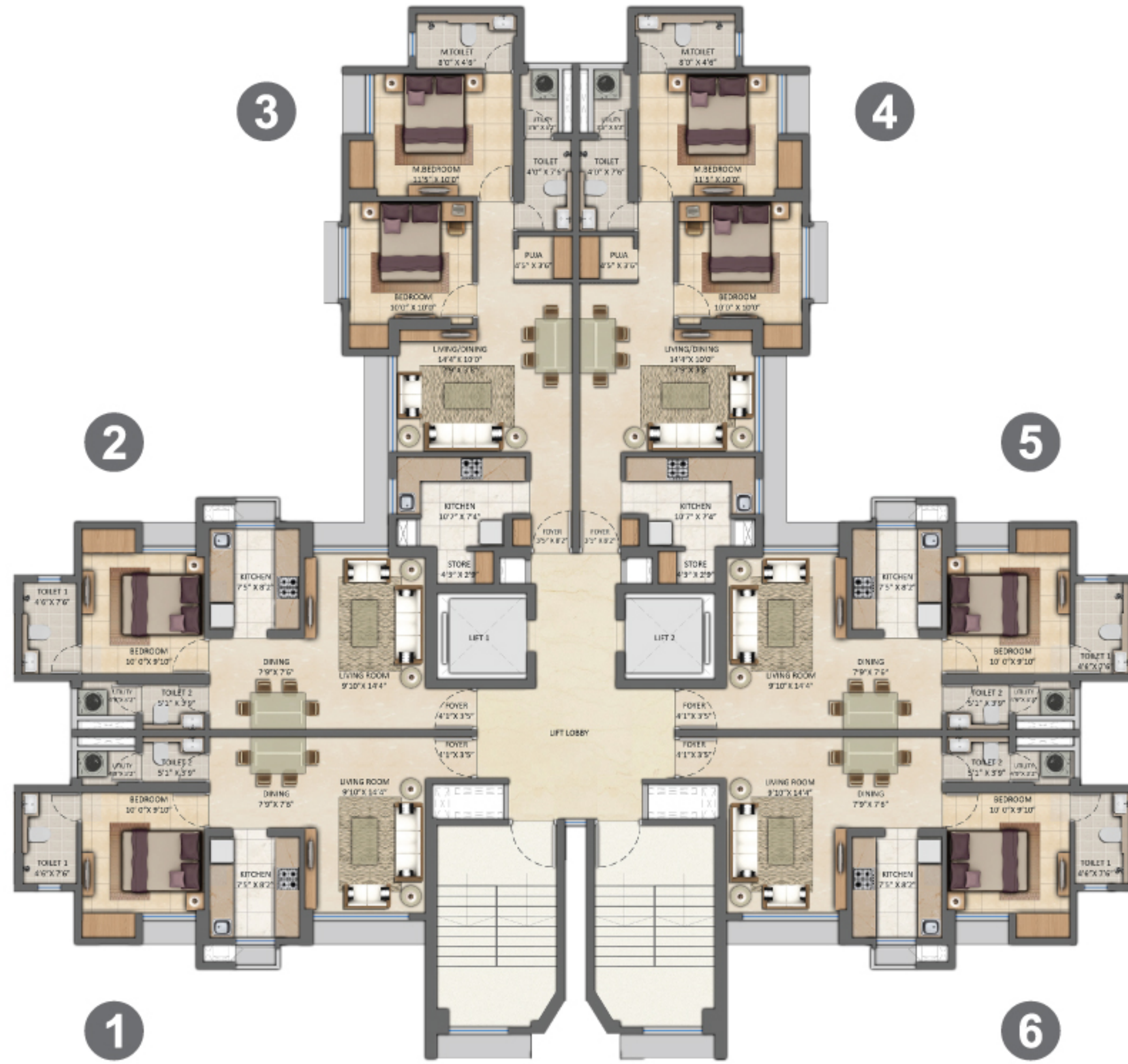
- 1. 6 LANE KOLSHET ROAD
- 2. GRAND ENTRANCE
- 3. MULTI-LEVEL CAR PARK
- 4. PAVILION
- 5. CENTRAL GREEN
- 6. PROJECT CLUBHOUSE & OUTDOOR CHILDRENS' PLAY AREA
- 7. CRICKET PITCH
- 8. PLAY VILLAGE
- 9. GRAND CLUB
- 10. SPORTS COURTS
- 11. FOOTBALL FIELD
- 12. FOREST ZONE
- 13. TEMPLES (JAIN & GANESHA)
- 14. FUTURE DEVELOPMENT







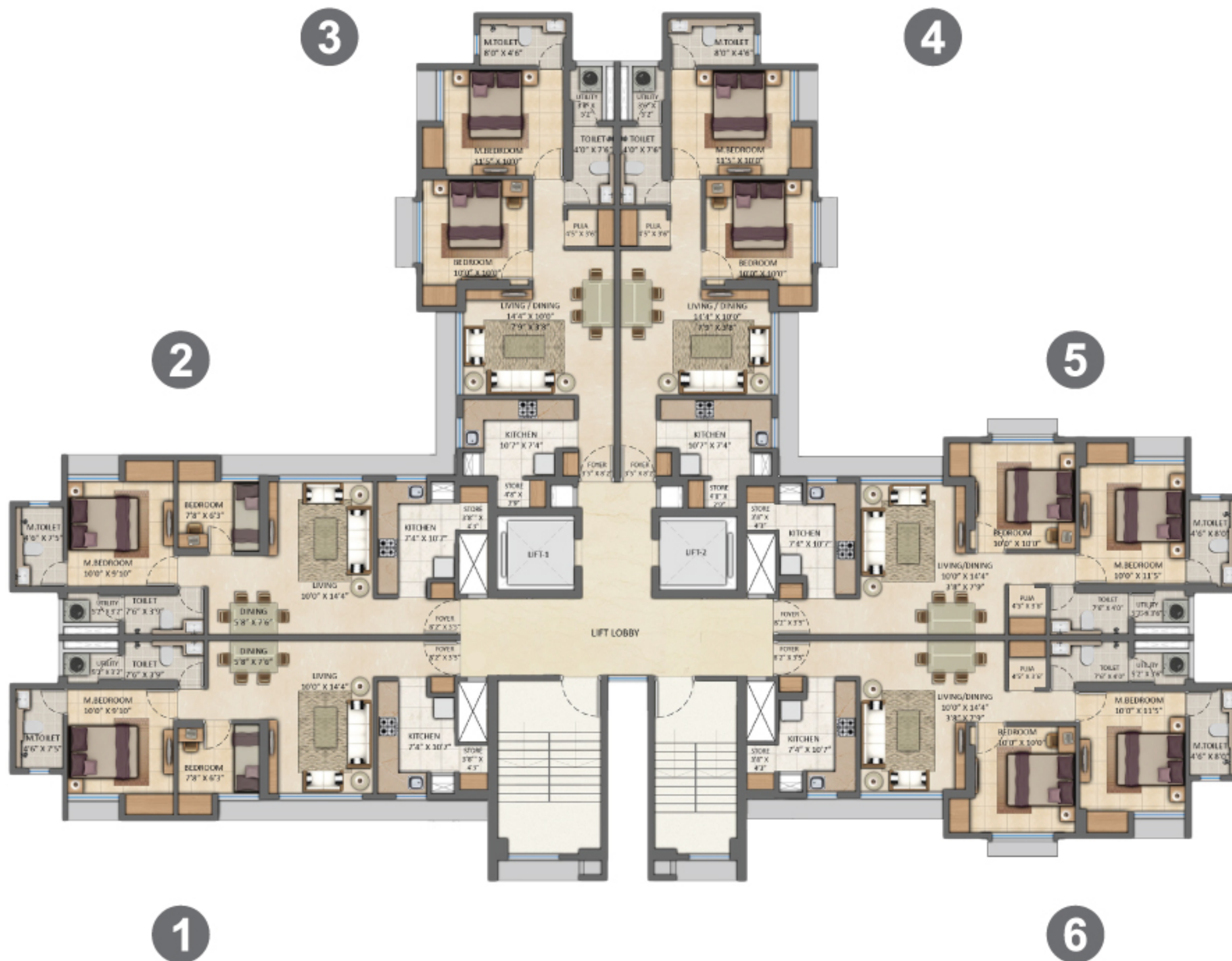
FLOOR PLANS



TYPICAL FLOOR PLAN - 1 BHK & 2 BHK ULTIMA



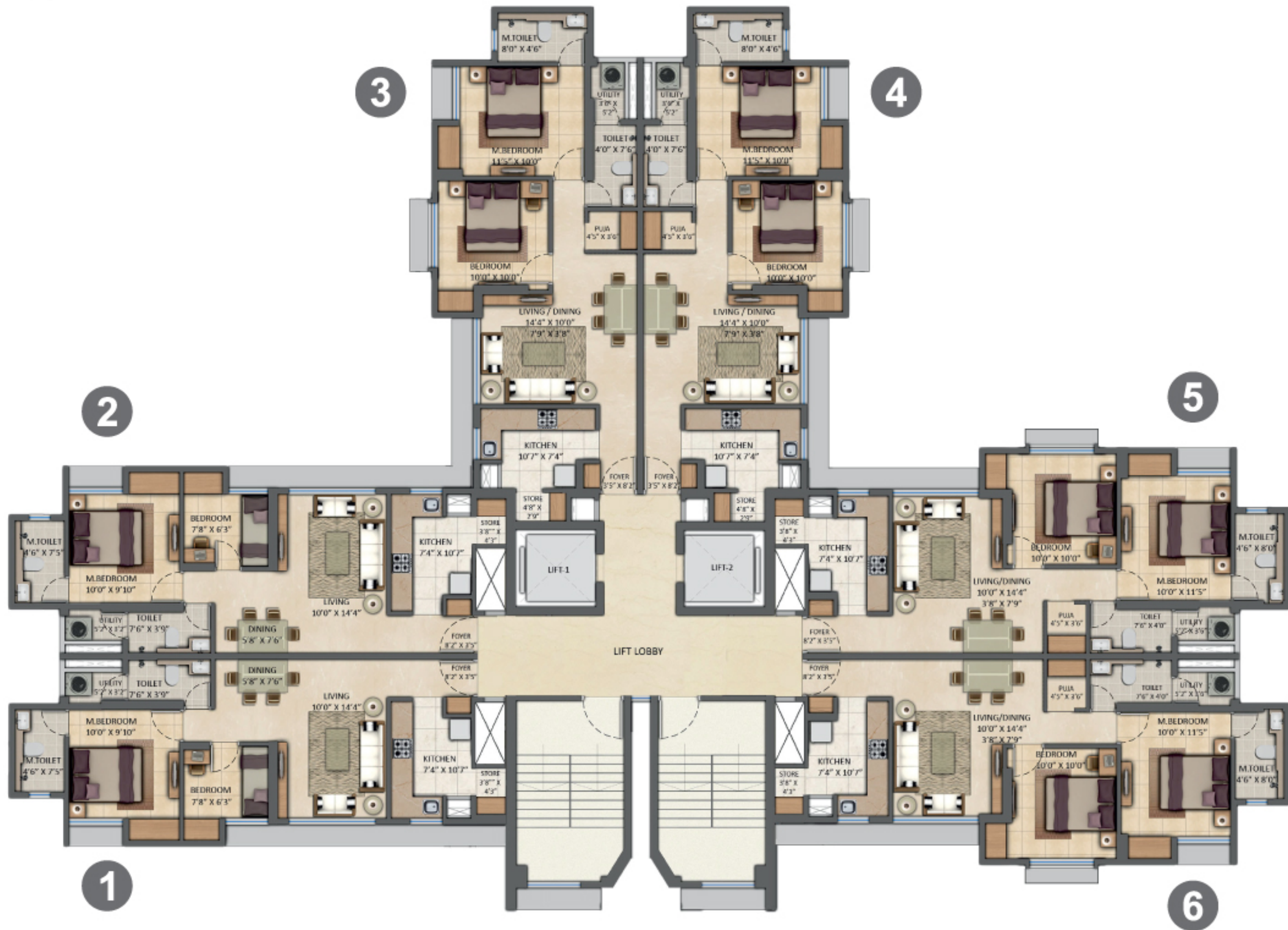
Please refer for wings: W31, W33, W35, W37  | W32, W34, W36, W45 



TYPICAL FLOOR PLAN - 2 BHK ULTIMA & 2 BHK OPTIMA



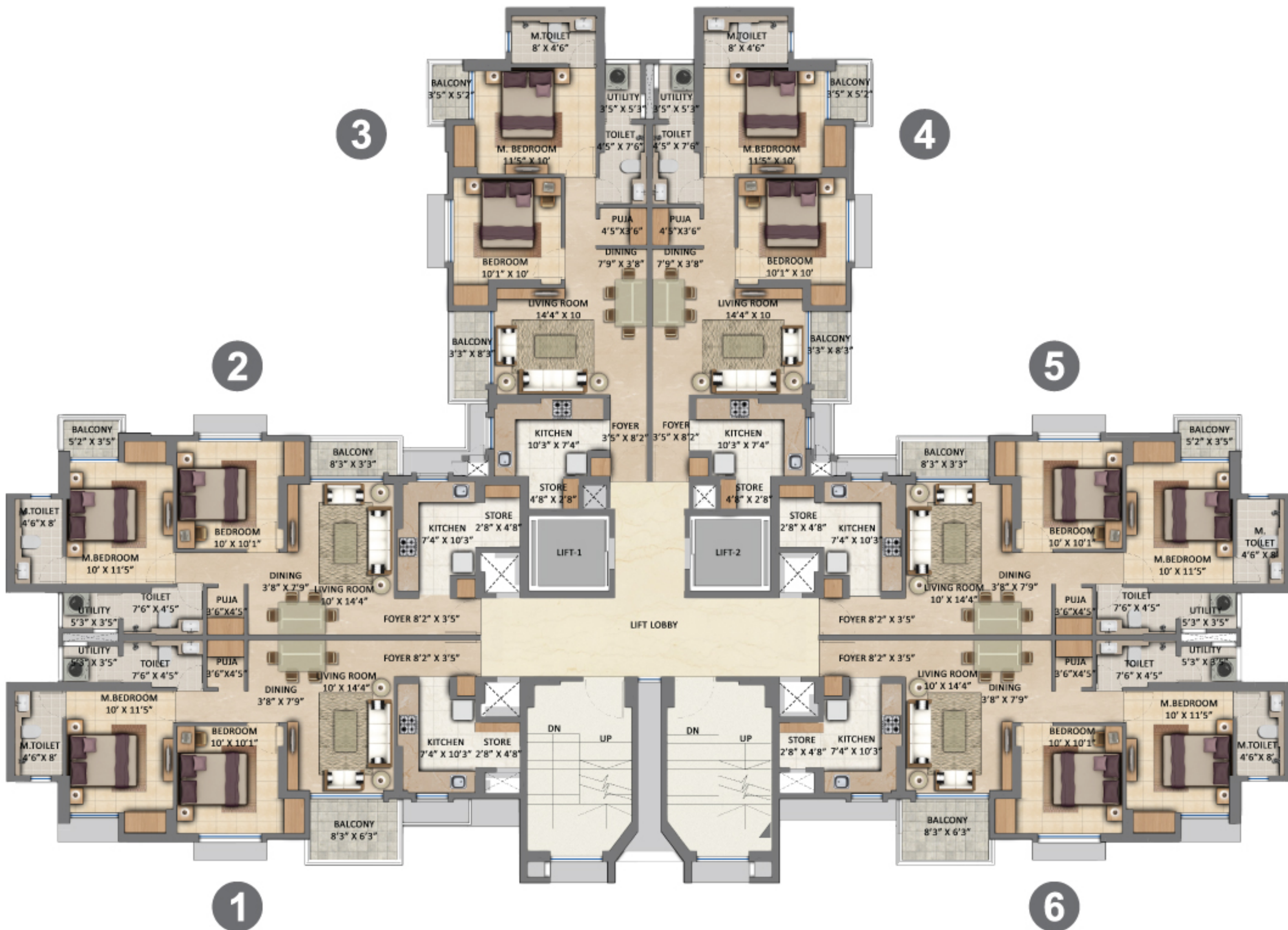
Please refer for wings: W17, W19, W27  | W18, W26 



TYPICAL FLOOR PLAN - 2 BED ULTIMA & 2 BED OPTIMA



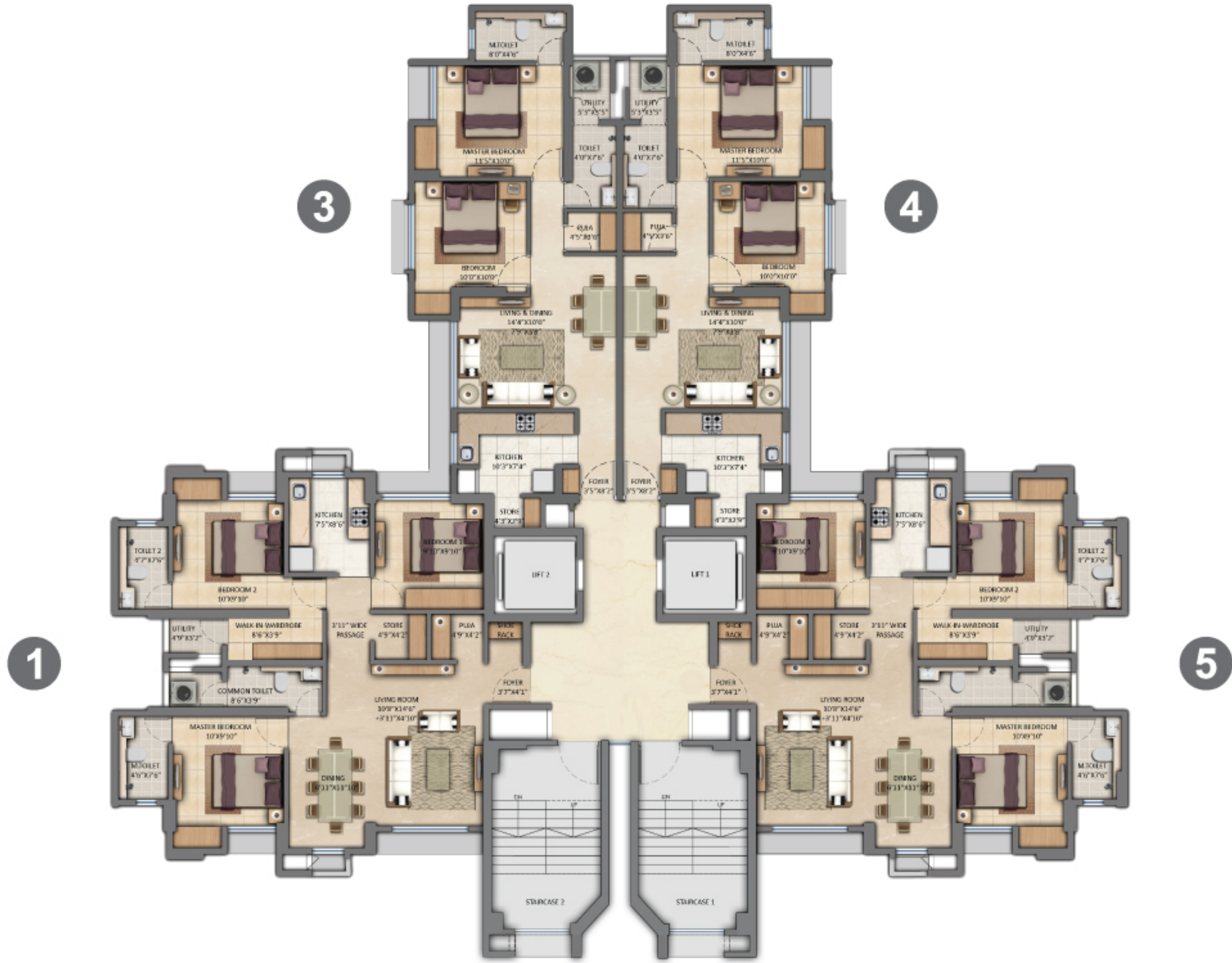
Please refer for wings: W21, W29  | W20, W28, W30 



TYPICAL FLOOR PLAN - 2 BHK ULTIMA WITH DECKS



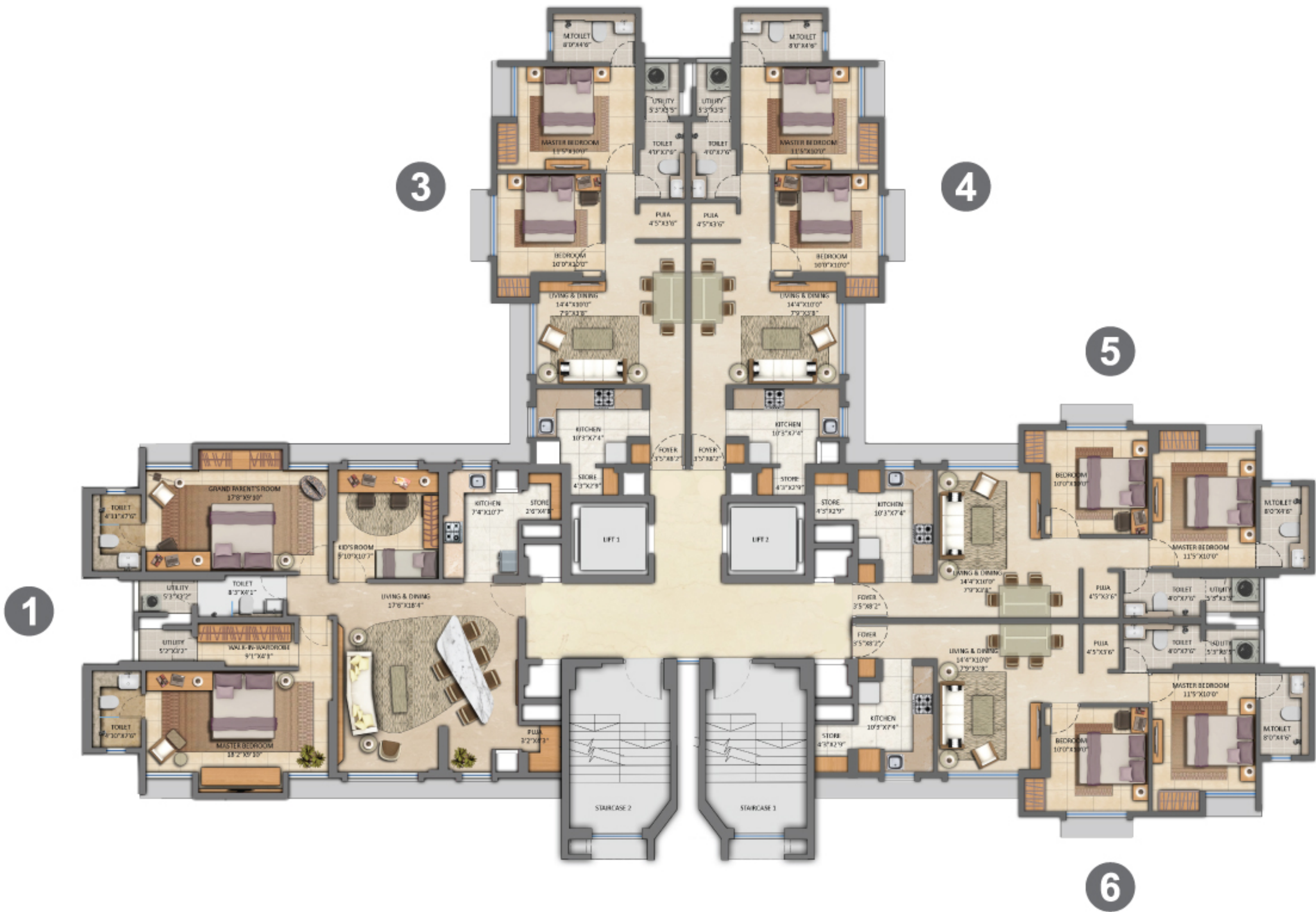
Please refer for wings: W6, W23  | W22 



JODI FLOOR PLAN - W31, W34, W35



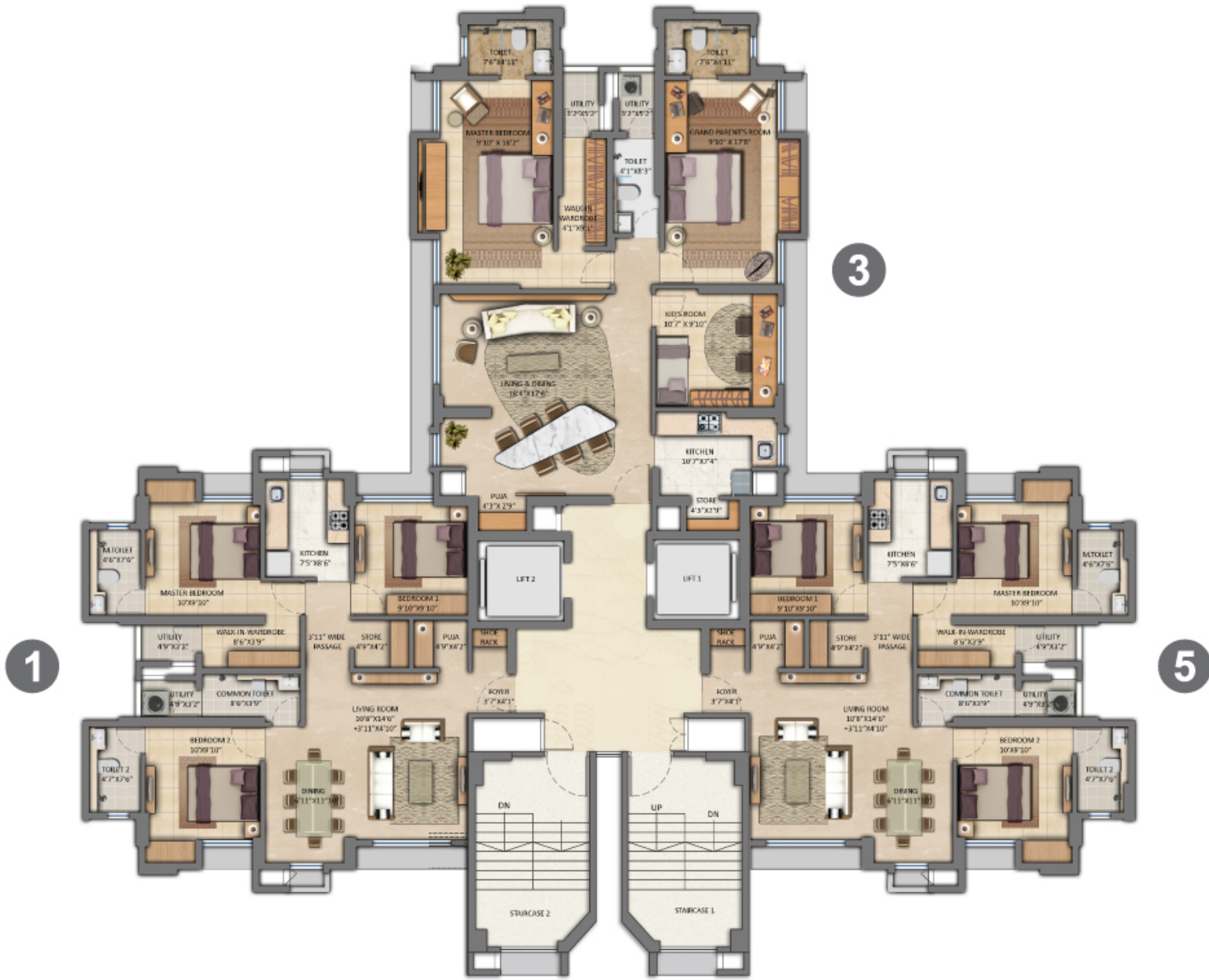
Please refer for wings: W31, W35  | W34 


JODI FLOOR PLAN - W28, W29, W30



Please refer for wings: W29  | W28, W30 

JODI FLOOR PLAN - W46



Please refer for wings: W46 



UNIT PLANS

UNIT PLAN - 1 BHK



Please refer for wings: W1, W2, W3, W4, W5, W7, W8, W9, W10, W11, W12, W13, W14, W15, W16, W31, W32, W33, W34, W35, W36, W37, W45

UNIT PLAN - 2 BHK OPTIMA



Please refer for wings: W17, W18, W19, W20, W21, W26, W27, W28, W29, W30

UNIT PLAN - 2 BHK ULTIMA



Please refer for wings: W1, W3, W5, W7, W9, W11, W12, W14, W16, W17, W18, W19, W20, W21, W26, W27, W28, W29, W30, W31, W32, W33, W34, W35, W36, W37, W45

UNIT PLAN - 2 BHK ULTIMA WITH DECK (TYPE A)



Please refer for wings: W6, W22, W23

UNIT PLAN - 2 BHK ULTIMA WITH DECKS (TYPE B)



Please refer for wings: W6, W22, W23

UNIT PLAN - 3 BHK (JODI)



Please refer for wings: W1, W2, W3, W4, W5, W7, W8, W9, W10, W11, W12, W13, W14, W15, W16, W31, W34, W35, W46

UNIT PLAN - 3 BHK LARGE (JODI)



Please refer for wings: W17, W18, W19, W26, W27, W28, W29, W30

UNIT PLAN - 3 BHK LARGE (JODI)



Please refer for wings: W46

Sales Office: Amāra Sales Gallery, Clariant Compound, Kolshet Road, Thane (West) – 400 607
 Corporate Office: Lodha Excelus, N. M. Joshi Marg, Mahalaxmi, Mumbai – 400 011 | www.lodhagroup.com/amara

Disclaimer: The images and other details herein are indicative only. Any purchaser/leasee of this development shall be governed by the terms and conditions of the Agreement for Sale/Lease entered into between the parties, and no details mentioned in this printed material shall in any way govern such transactions. Variation of up to +/-2% in internal dimensions & areas is possible due to design and construction tolerances. The reader acknowledges that this is a launch application companion and some of the details may change over time in the best interest of the development, as may be decided by the Developer/Owner. | Internal document for training and reference only. Not for circulation. MahaRERA registration number: P51700018593, P51700018579, P51700020093, P51700016961 available on the website <https://maharera.mahaonline.gov.in>. Date of Printing - April 2019.