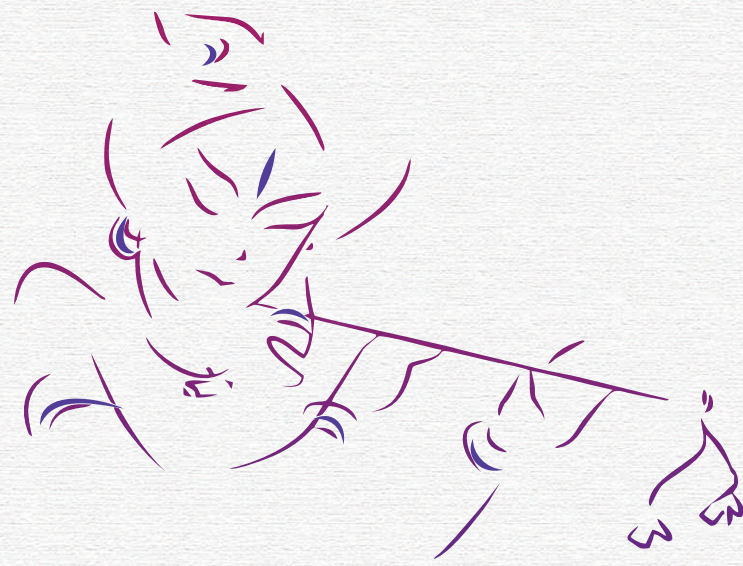


LIVE A DIVINE LIFE



PLOT NO. 73, SECTOR - 3, PUSHPAK NAGAR, NAVI MUMBAI.



LIVE A GODLY LIFE*

GRAND ENTRANCE LOBBY





VRINDAVAN
CHANDAR HEIGHTS

VRINDAVAN
CHANDAR
HEIGHTS

Jenny's
BUILDING COMMUNITIES

NIPRO
PROPERTY MANAGEMENT

BOONS
DEVELOPERS

URBAN
COMMUNITIES

APOLLO
BERRY & CURRY

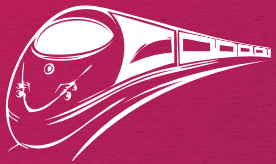
Rastogi's
GROCERIES

PROJECT FEATURES

- Clear Title CIDCO Transfer Plot.
- G + 7 Storied Residential & Commercial Project.
- Aesthetically designed 1 & 2 BHK Flat.
- Quality construction with earthquake resistant RCC structure.
- Excellent planning with no wastage in all rooms.
- Attractively Designed Entrance Lobby.
- Fully automatic high speed Elevators.
- Round the Clock Security.
- Loan available by major financial Institutions & Banks.

LOCATION HIGHLIGHTS

- Navi Mumbai International Airport – 10 Mins
- Mumbai-Pune Expressway – 10 Mins
- Khandeshwar & Panvel Railway Station – 10 Mins
- Seawoods & Belapur Railway Station – 15 Mins
- Upcoming Trans Harbour Sea-Link Connecting to Mumbai – 20 Mins
- Metro Station Coming up in the Node
- Close to National Highway 4 B (NH 4B)
- All the major Futuristic Developments live SEZ, Trans-harbour Link, 5 Star Hotels, Advanced Healthcare centers and sports stadium Coming around this node
- Multimodel Connectivity - BRTS Metro etc.



VRINDAVAN CHANDAR HEIGHTS SPECIFICATION :



FLOORING :
| 2'X2' VITRIFIED FLOORING IN ALL ROOMS.



ELECTRIFICATION :
| CONCEALED BRANDED COPPER WIRING & FITTINGS
| PROVISION OF CABLE TV, TELEPHONE IN LIVINGS
| AC POINT PROVISION IN BEDROOMS



DOORS :
| DECORATIVE LAMINATE FLUSH MAIN DOORS
| DECORATIVE LAMINATE FLUSH INTERNAL DOORS
| GOOD QUALITY FIXTURE & FITTINGS



WALL & PAINTS :
| GYPSUM / POP / PUTTY FINISHED INTERNAL WALLS
WITH ACRYLIC DISTEMPER PAINT
| ACRYLIC PAINT ON EXTERNAL WALLS



BATH & WC :
| DESIGNER GLAZED TILES DADO UPTO BEAM LEVEL
| GOOD QUALITY SANITARY WARE FITTINGS
| CONCEALED PLUMBING WITH QUALITY C.P. FITTINGS



KITCHEN :
| GRANITE KITCHEN PLATFORMS WITH S.S. SINK.
| WALL TILES DADO UP TO BEAM LEVEL



WATER TANK :
| UNDERGROUND AND OVERHEAD WATER TANK
WITH ADEQUATE WATER STORAGE CAPACITY



WINDOWS :
| ANODIZED SLIDING WINDOWS WITH GRANITE SILL



VRINDAVAN
CHANDAR HEIGHTS

VRINDAVAN
CHANDAR
HEIGHTS

Jenny's

NIPRO

BOONS

SHEBA

MOMO

Rudly's
CYCLES

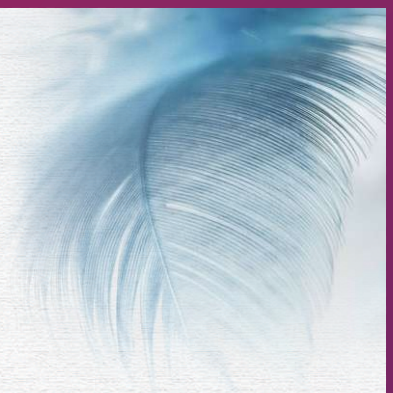


1 BHK+BALCONY
ISOMETRIC VIEW



2 BHK+BALCONY
ISOMETRIC VIEW





PUSHPAK NODE - LOCATION MAP



VRINDAVAN
CHANDAR HEIGHTS

PLOT NO. 73, SECTOR - 3, PUSHPAK NAGAR, NAVI MUMBAI.



Scan for Location

A PROJECT BY :



Office :
Plot No. 73, Sector-3, Pushpak Nagar, Dapoli, Navi Mumbai.

Email : info@vrindavandevlopers.com
Website: www.vrindavandevlopers.com

For Booking Contact :
+91 7738 932 830 / 7738 202 830

Architect : ATUL PATEL ARCHITECTS



MAHARERA NO.
P52000066557