



Developed by:

GRC Infra Pvt. Ltd.

161/A, 7th Cross, Teachers Colony, 1st Stage
Kumaraswamy layout, Bangalore 560 078
Phone: 91 80 2666 0456, 2860 8455
2860 8473, Fax: 9180 2666 7273
Mobile: 990099 6000, 99009 95000, 96861 13810
E-mail: mail@grcinfra.com, www.grcinfra.com



Execution by:

GR Constructions

161/A, 7th Cross, Teachers Colony, 1st Stage
Kumaraswamy layout, Bangalore 560 078
Phone: 91 80 2666 0456, Fax: 9180 2666 7273
E-mail: sales@grconstructions.co.in
info@grconstructions.co.in
www.grconstructions.co.in

Site Address:

GRC Brundavan

25/4-2, Gurusarabhowma Layout
Next to ITI Layout, Mysore Road
Bangalore 560 039
Phone: 91 80 2860 8455, 2860 8473



Turning a new leaf
in eco-friendly
surroundings



Ripples of harmony
between comfort and greenery

GRC Brundavan
State-of-the-art 2 & 3 BHK Apartments

concept, design & execution by: ragules - 98450 74047

This brochure is conceptual in nature and is by no means a legal offering. The promoters reserve the right to change, delete or add any specification or plan shown here in.



An edifice with 5 blocks,
each block comprising 15 floors,
each floor having about 8 units

KNOWING US

Leafing through the pages of GRC history, every project of ours has been a turning point in the construction business. Keeping in tune with the current requirements, but without compromising on eco responsibility, our latest apartments, on the Mysore Road, is sync between your expectations and our offerings.

THE COMFORT ZONE

An edifice with 5 blocks, each block comprising 15 floors, each floor having about 8 units, GRC Brundavan is located near Gopalan Arcade, off Mysore Road, one of the busiest and developing roads. But the project itself is away from the urban din, into the lap of Mother Nature, where whistling birds and rustling leaves keep you company.

THE LOCATION ADVANTAGE

Bangalore, the happening global city, is the nerve-centre for technological development, especially, the IT sector. And, Mysore Road connects the city with other centres of business importance like Mysore, Kochi, etc that lie to the south and south-west of Bangalore. This Mysore Road is dotted with industry majors like Featherlite, Bangalore Press, Coca Cola, colleges of repute like RV Engineering College, ultra-modern hospitals like the BGS, places of worship like the Gali Anjaneyaswamy Temple and every other civic amenity like the mall, theatres, hotels, etc. City Market (7 km), Vijaynagar (5 km), Rajarajeshwarinagar (a few minutes drive). Bangalore University campus, a progressive hallmark of excellence in education, spread over an area of 500 acres of green view, is a feather in the cap of Mysore Road. Wonder La, the amusement park, and schools, offices, hospitals, etc (mere hop-skip-jump away), connectivity is a major advantage. Almost a parallel- running NICE Road, a multi-lane

freeway is a double advantage in terms of absorbing a major portion of Mysore Road traffic and adding multi-fold value to your investment in these apartments. Mysore Road itself is undergoing a transformation in terms of modernisation and inclusion of dedicated lanes for different types of vehicles.

A sprawling 15-acre park is in the vicinity of walking distance, Nayanadana halli railway station and the proposed Metro station add to the mobility and greater connectivity. Spread over an area of 4.33 guntas, the project's 2 BHK units measure between 1100 and 1275 sft and 3 BHK units measure between 1339 and 1569 sft. Structural design that ensures safety, the layout pattern that guarantees comfort and the colour scheme that appeals to your aesthetics, collectively, put the apartments many notches above the ordinary. Spread-out greenery and adequate open spaces, coupled with modern state-of-the-art comforts make your life a happening event day after day.





GRC Brundavan



Dotting the Mysore Road, are what you would surely expect - reputed educational institutions, multi-speciality hospitals, modern malls, global firms, super markets, places of worship, etc.

Near by places

- The Club
- Gopalan Arcade
- Rajarajeswari Temple
- Subramanyeshwara Temple
- Nimishamba Temple
- Bangalore University (Gnana Bharathi)
- R. V. Engineering College
- Global Academy
- National Hill View School
- Fortis Hospital
- Manipal Hospital
- Proposed Metro Station
- Railway Station
- 15 Acres of Park
- BGS Global Hospital
- Police Stations Etc.,

Reach out to nature, with all urban comforts

A landmark of elegance

If location comes as a pleasant surprise to you, our apartments shall, surely, impress you. The majesty of its looks, what with the skylines in the background changing from early-morning orange to deep blue at noon to mellowed maroon by evening to star-studded dark tinge at night, gives its owner a sense of pride in flashing his visiting card.

Structural design, the layout pattern and colour scheme, collectively, put the apartments many notches above the ordinary when it comes to comfort, safety and aesthetics.

Adequate open spaces, manicured landscapes, spread-out greenery, all symbolizing merging with nature and existing along with the state-of-the-art residential facilities make your life worth every moment of the day. Now you can believe your lifestyle is nothing less than royal.



- 1) Tower - A
- 2) Tower - B
- 3) Tower - C
- 4) Tower - D
- 5) Club House & Tower - E
- 6) Entrance
- 7) Children's Play Area
- 8) Tennis Court
- 9) Basketball Court
- 10) Swimming Pool
- 11) Acupressure Court
- 12) Open Air Theater

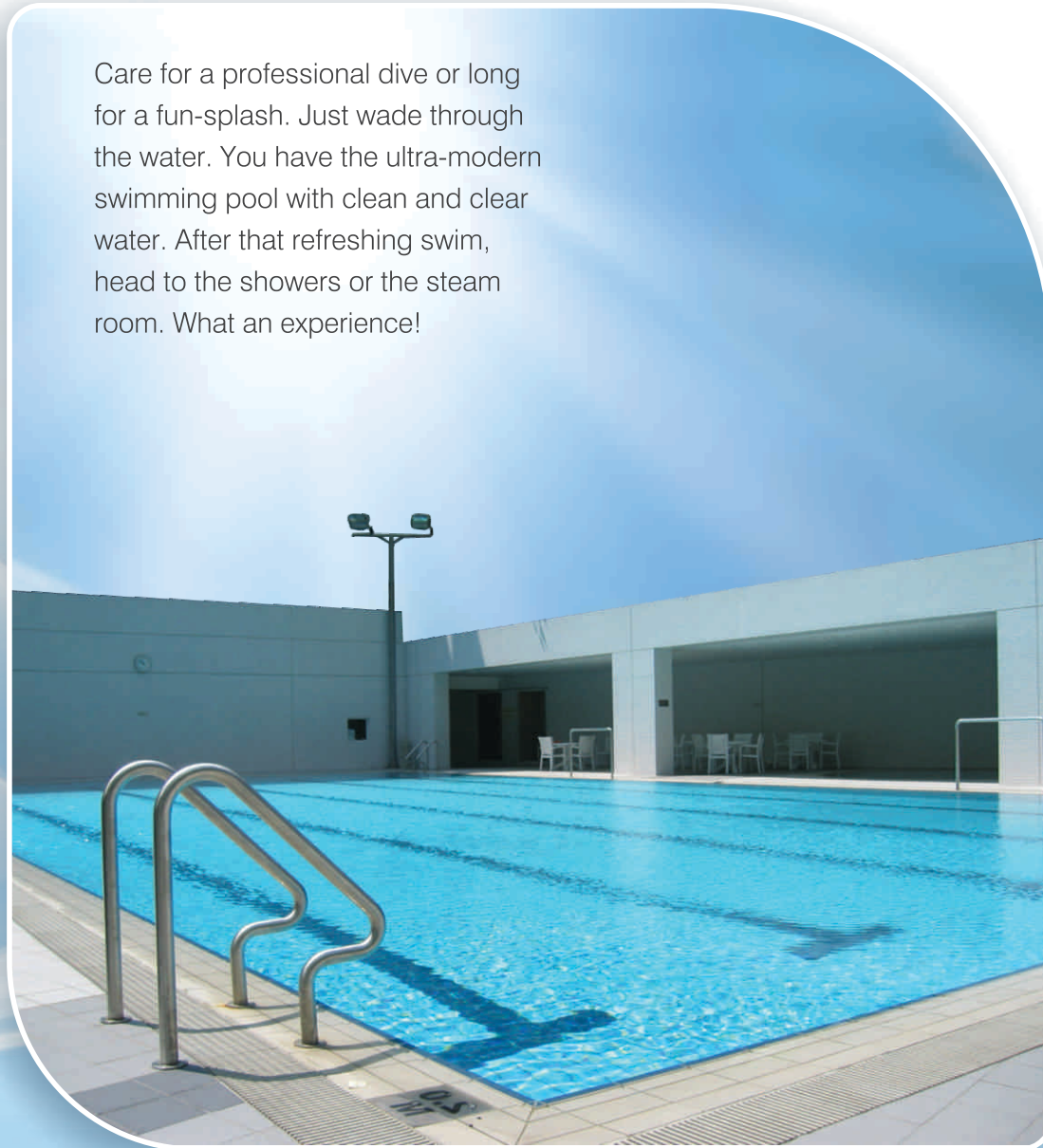


GRC Brundavan

MASTER PLAN

You should be enjoying these Amenities

- Club House
- Swimming Pool
- Children's Play Area
- Open Air Theater
- Mini Tennis Court
- Basket ball Court
- Jogging Track
- Acupressure Court
- Gymnasium
- Meditation Centre etc.,



Care for a professional dive or long for a fun-splash. Just waded through the water. You have the ultra-modern swimming pool with clean and clear water. After that refreshing swim, head to the showers or the steam room. What an experience!

When nature's bliss compliments your comforts



The fully-covered playing-arena lets you indulge in almost all types of indoor games. Score a point in table tennis. Checkmate your friend at chess. Play carom and foot ball. The list is almost endless.

Search for the inner peace through prayers in our meditation hall. A hall with the spiritual ambience that transports you to your own world of tranquility.

Age catches up. But, memories stay as fresh. Share your good-old days with your colleagues in our senior citizens' kiosk.

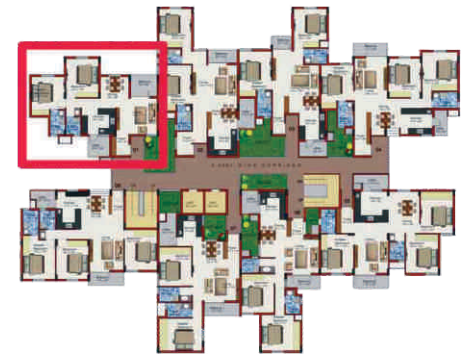
Oh! Those little devils! We mean the naughty children. Being buoyant is their second nature. Why stop them? The children's area is the answer to their restlessness.

Calling all health-freaks. Sweat it out in our ultra-modern gym. From the simplest of the dumbbells to the latest exercising-equipment, our gym has almost everything.

A day well-spent but tiring? Relax with a card game. Gossip for fun. Debate the current affairs. Or, just tell a joke to your friends. The clubhouse is the answer.

Take a leisurely walk on the manicured pavement. Jog on the well-laid tracks. Laze around in the landscaped garden. Play a quick game at the basket-ball net. Do many other things in the multi-purpose hall. All in all, a life of expressions at GRC Brundavan.





Key Plan



- Typical Unit No:1
- Type: 2 BHK
- Facing: East



Key Plan



- Typical Unit No: 4
- Type: 3 BHK
- Facing: East



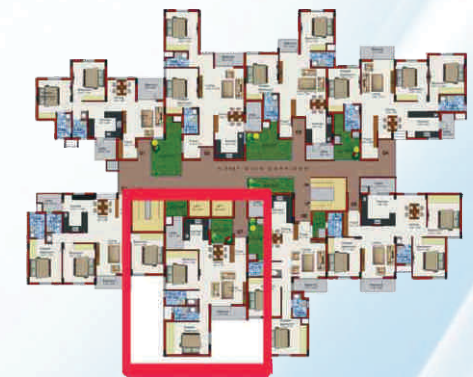
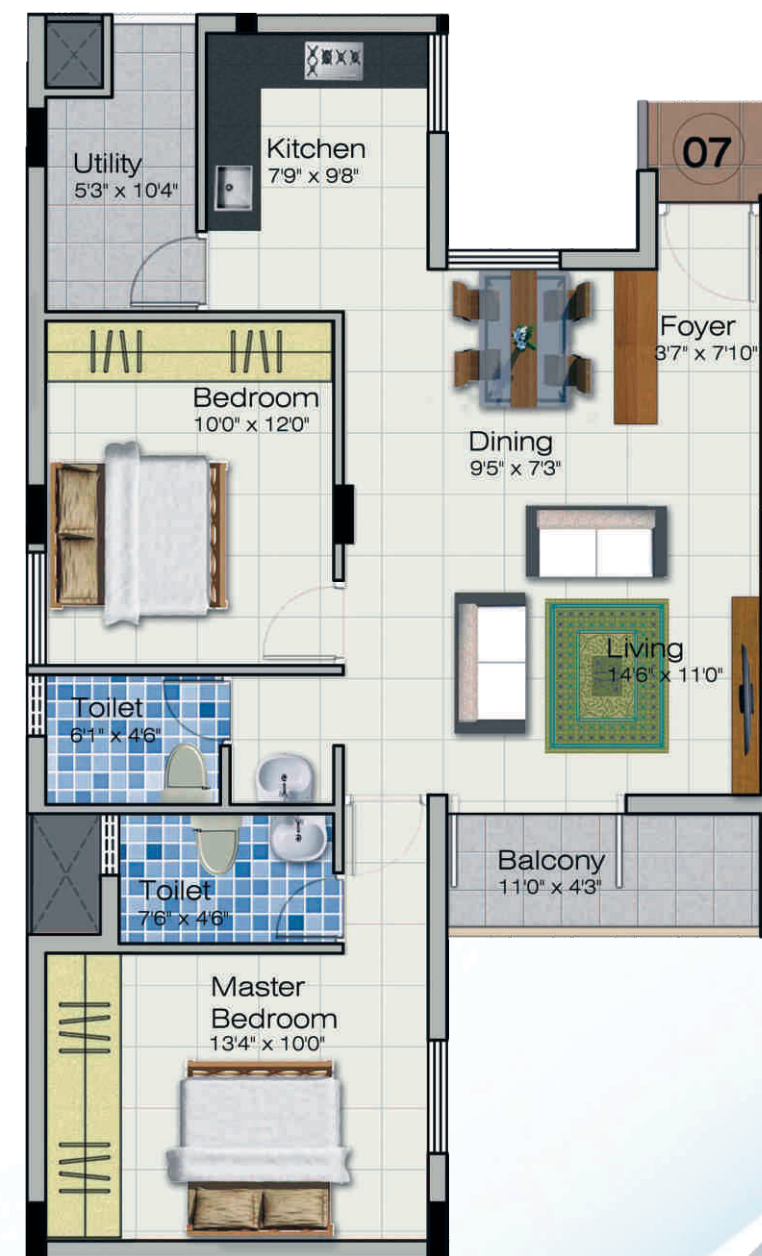
Key Plan



Typical Unit No:5

Type: 3 BHK

Facing: North



Key Plan



Typical Unit No: 7

Type: 2 BHK

Facing: North

Specifications

RCC Frame Structures

- Concrete 6"/4" Hollow / Solid block masonry
- Elegant entrance lobbies with anti skid tiles
- Car parking

Doors and Windows

- Main door frame - Teak
- Main door shutter - Veneered teak
- Internal doors - Hardwood
- Internal doors - Block board with paint finish
- Windows & french windows - UPVC clear float glass
- Toilet ventilators are aluminium luvars

Flooring

- Vitrified flooring in living and dining, bedroom and kitchen
- Clay tile flooring for balcony and utility

Electrical

- Fire resistant electrical wire of Anchor / equivalent make
- Elegant modular electrical switches of Anchor / equivalent make
- Telephone and Television points in living and bedroom

Lift

- 8 passenger lift of reputed make OTIS / KONE / SCHINDLER / or equivalent make

Toilet fittings and accessories

- Ceramic glazed tiles up to 7 feet
- Sanitary ware - Cera, Paryware

Fittings

- CP fitting Jaguar, continental make or equivalent
- Plumbing concealed in medium class CPVC / PVC pipes
- All external plumbing waste water pipes and storm water drains combination of PVC and stoneware pipes

Kitchen

- 20 mm Black granite platform, and stainless steel sink with drain board of reputed make
- 2 feet glazed ceramic tiles above granite platform
- Provision for washing machine and gas connection in utility area

Painting

- Interior - Base white oil bound / acrylic distemper
- Exterior - Cement based paint snowcem or equivalent
- Main door - Melamine polish
- All other doors - Synthetic enamel paint
- MS grills and railings - Synthetic enamel paint

Power Back up

- Generator for common areas, lifts and pumps
- 0.5 KVA for 2 / 3 BHK flats



Ongoing Projects



GR SHRUTHI NIVAS



GR Shruthi Nivas
Manipal County Road, off Hosur Road

GRC NIRVANA



GRC Nirvana
Arekere Main Road, Bannerghatta Road

GR SAGAR NIVAS



GR Sagar Nivas
Hosa Road, off Hosur Road