

WITH YOUR ADDRESS!



Site: sr. no. 85, near matoshree washing centre, sus, pune 411021.

Call: **8805607777, 8805608888**

[www.sukhwanipanorama.com](http://www.sukhwanipanorama.com) | [sukhwanipanorama@gmail.com](mailto:sukhwanipanorama@gmail.com)



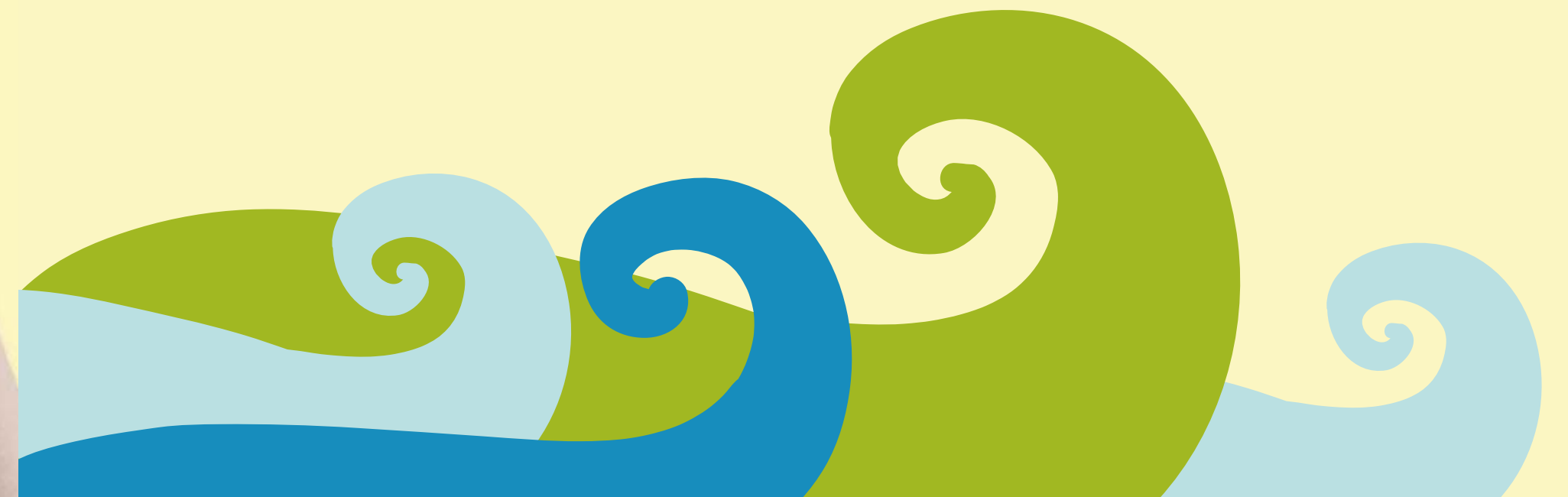
2 & 3 BHK Homes

@ Sus

Disclaimer: The brochure is only a conceptual presentation of the project and not a legal offering. The developers reserve the right for any deletions/additions in plans and elevations.  
All details are subject to change and all optional amenities other than the specifications are at extra cost.

## A WAY OF LIFE THAT WILL IMPRESS

We all live to create something for which we will be known...something that brings to mind only our name and nothing else...something which we call our impression! From friends to colleagues and acquaintances, we all want to impress the people around us. Being cool in the way we talk, act, interact with people; to the point we want them to talk about us, it is this one exclusive impression we all want to create. But what is the biggest factor that not only influences, but shapes our impression? Without doubt, it is the place where one lives...





FIRST IMPRESSION...  
YOUR HOME AT PANORAMA!





## AN ADDRESS THAT WILL IMPRESS

Here is an address that will create an unforgettable impression of you, for you!

Welcome to Sukhwani Panorama!

An address of 2 & 3 BHK Homes at Sus, here are spaces that you want to own that create an impression of yours.

A project by Sukhwani Lifespaces, Sukhwani Panorama is a compilation of 192 well-designed apartments at Sus.

Spread over 4 acres of land that offers excellent connectivity, the homes at this impressive address form a fine collage of

4 towers, with each tower having 12 storeys. Own an impressive address for times to come with Panorama!

A VIEW  
THAT IMPRESSES





## A LIFESTYLE THAT WILL IMPRESS

When the location and neighbourhood are such, the lifestyle is sure to be impressive!

With easiest access to the best educational institutions, reputed healthcare destinations & finest entertainment zone  
you are sure to leave everyone around you impressed, with your choice of address.

From the IT Parks and other corporate spaces at Hinjewadi, to other hubs of activity like Pashan, Wakad, Kothrud and  
Baner; Pune's most travelled destinations are in close vicinity at Panorama.

A 45m road takes you from Mumbai-Pune Expressway to your home at Sukhwani Panorama, while a 24m DP Road,  
ensures smooth connectivity to Pirangut and other upcoming areas. Add to this, easiest accessibility with the much  
sought after Phase 3 of Hinjewadi.

And yes, every other necessity that you need like banks, malls etc., are either here or are  
coming up right next to your address at Sus!



## AMENITIES THAT WILL IMPRESS

- Swimming Pool with separate toddler's pool
- Banquet hall with party lawn
- Well-equipped Gymnasium
- Children's play area with sandpit
- Jogging Track
- Decorative Entrance Lobby
- Attractive Entrance Gate
- 30 ft. Wide internal concrete/paved road
- Automated elevators
- Garbage Chute
- 24x7 Security with CCTV Cameras
- Rain water harvesting
- Fire Fighting system
- Street Lights
- Landscaped Garden
- Generator Back-up for common areas and lifts

## Special Features

- Modular Kitchen, under counter trolleys and shelves
- Video Door Phones with intercom facility
- French door with mosquito net in terrace
- 800mm X 800mm vitrified tiles flooring
- Solar heated water connection in master toilet
- Provision for DTH TV connection
- Provision for Wi-Fi internet connection
- Provision for Inverter backup





## SPECIFICATIONS THAT WILL IMPRESS

### Flooring

- Vitrified Flooring (800mm X 800mm) with skirting
- Anti-skid Flooring in terraces and toilets

### Wall and Ceiling

- Gypsum punning on walls and ceiling
- OBD Paint for walls and ceiling

### Kitchen and Utility Area

- Modular Kitchen, under-counter trolleys and shelves
- Granite top Kitchen Platform with SS Sink
- Dado Tiles upto lintel level
- Adequate Electric Points for Appliances
- Washing Machine Provision (Electrical and Plumbing) in utility area
- Skid Free flooring in Utility Area with Dado upto 4' high
- Exhaust Fan

### Toilet

- Premium CP fittings of Reputed Brand
- Sanitary Ware of Reputed Brand
- Full Height Dado Tiles
- Exhaust Fan
- Plumbing and Electrical provisions for geyser
- Solar heated water connection in master
- Hot and Cold mixer
- Wall hung commode with flush valv
- Anti-skid flooring in all bath rooms
- Glass Partition in master bath rooms

### Doors

- Laminated Main Entrance Door
- Toilets – Granite and Wood Composite Door Frames

### Electricals

- Concealed electrical points with Copper Wiring
- Provision for Cable TV Connection in Living Room and Master Room
- Branded Modular Switches
- AC point in Master Bedroom
- Miniature Circuit Breaker for safety
- Two-way light point in Master Bedroom
- Provision for Inverter Backup

### Safety

- Video Door Phones
- 24x7 Security with CCTV Cameras
- Panic and emergency assistance system

### Windows

- Powder coated aluminum sliding
- Windows with mosquito mesh
- Granite Sill for all windows



## ROAD TO THE ADDRESS



**CREDITS**  
 Architect: TKS Architects  
 RCC Consultants: G.A. Bhilare Consultants Pvt. Ltd.  
 Landscape Architect: Ar. Shobha Bhopatkar  
 Legal Advisor: Adv. Prasanna Darade  
 Brand Communication Partner: Saket Communications