



home

BEYOND MEASURE

AM

Shah's
Enclave

The lifestyle you deserve

Project by :



AM

DEVELOPERS

AM Developers, Bangalore, proudly presenting AM Shah's Enclave.

WELCOME TO

AM
Shah's
Enclave
The lifestyle you deserve

3 BHK LUXURY APARTMENT, DEVARACHIKKANAHALLI BANGALORE

Happiness of togetherness amplified!

This project is located at Maruthi Layout, Devarachikkanahalli, the most sought after residential area in the city of Bangalore.

@ AM Shah's Enclave, the structure is designed and planned to have stilt car parking, G+4 levels of dwelling units.

The design comprises 10 numbers of 3 BHK Homey, Pleasant & Firm homes just for you.

BBMP APPROVED

(Bruhat Bengaluru Mahanagara Palike,
Bengaluru.)

PROJECT ADDRESS

5, 11th A Cross Rd, opp. shahi exports,
Vivekananda Nagar, unit-14, Bengaluru,
Karnataka 560068



AM

Shah's Enclave

The lifestyle you deserve

Perfectly balanced
life style with effective
space planning & amenities
beyond the usual.

**3 BHK Apartments
off Hosur Main Road.**

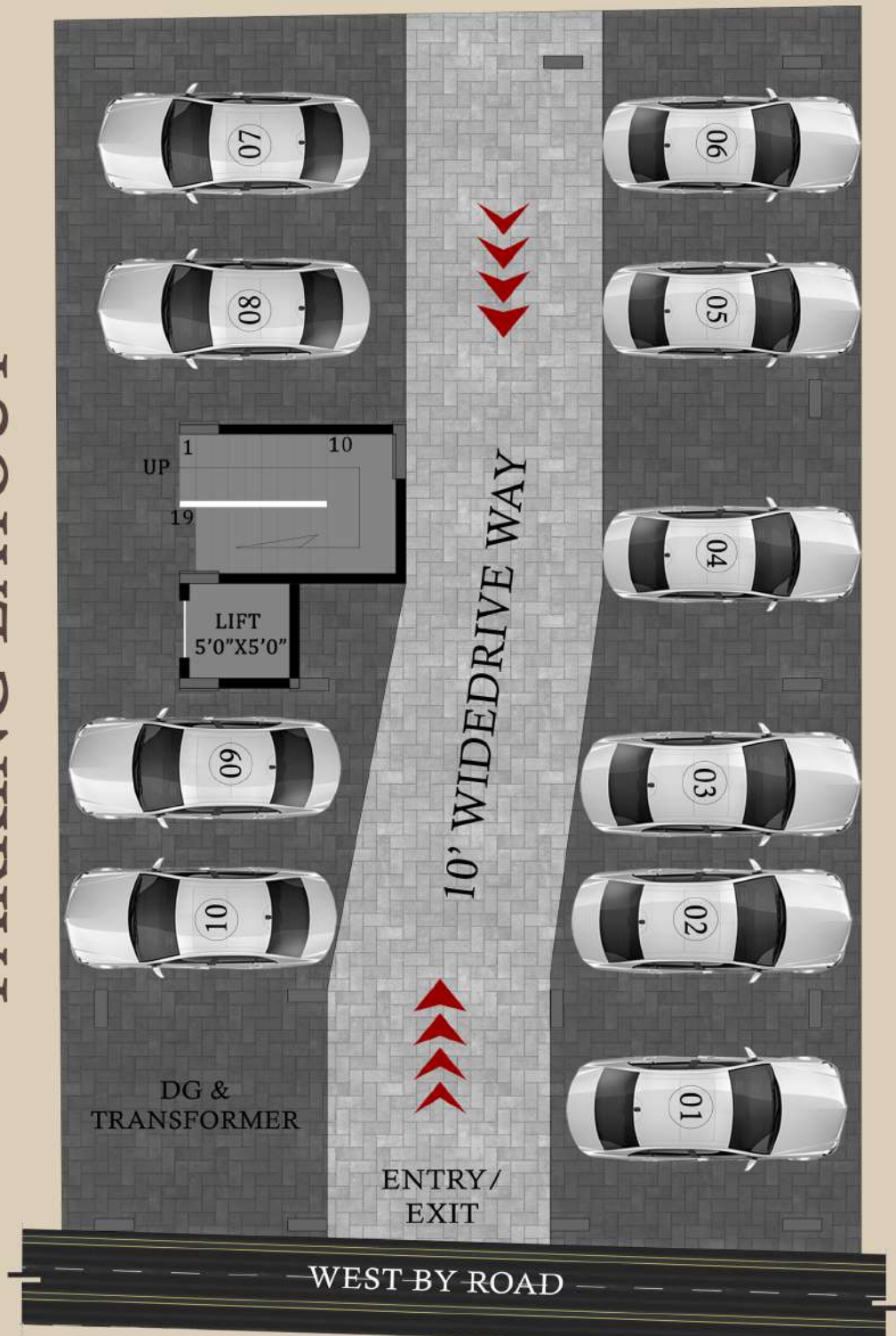
100%
vasthu

BBMP
APPROVED

TYPICAL FLOOR PLAN

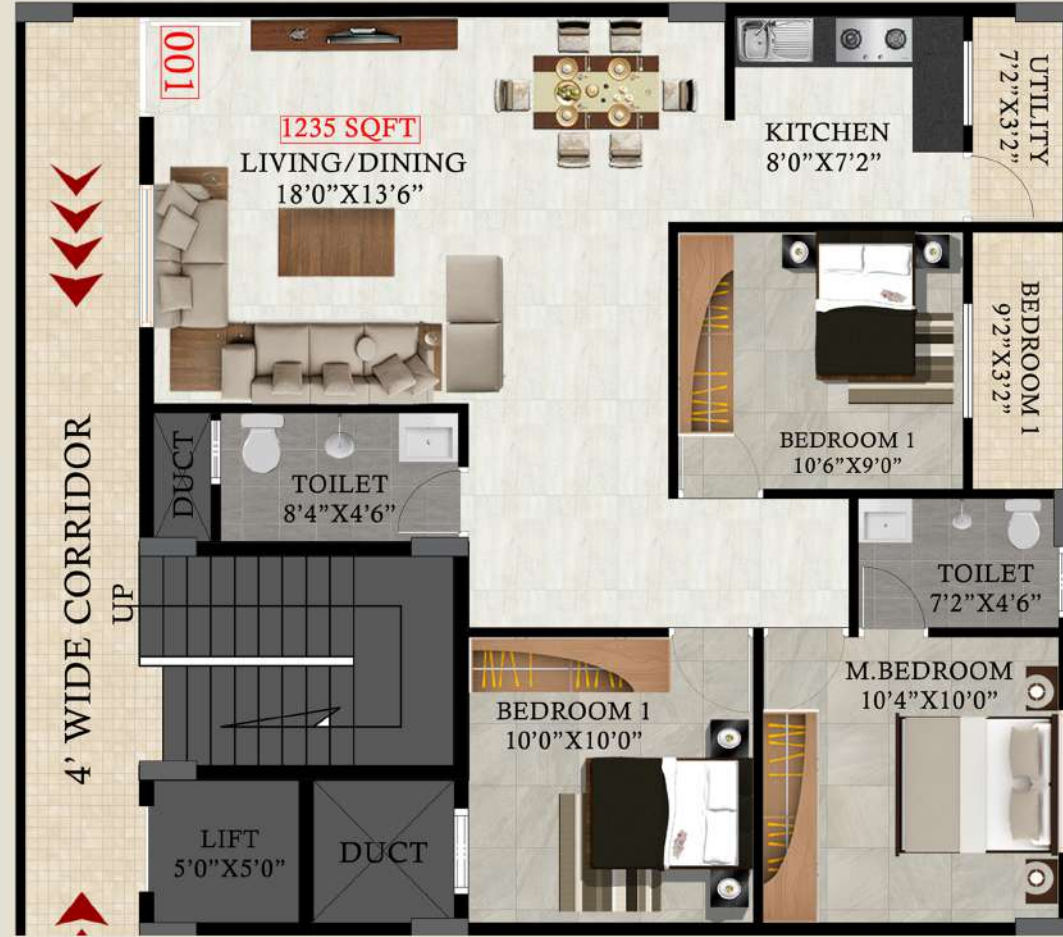


PARKING LAYOUT





Flat No: A-002 | Type: 3 BHK | 1377 sqft



Flat No: A-001 | Type: 3 BHK | 1235 sqft

FLATS	FACING	TYPE	SQFT	UDS
A-001	NORTH	3 BHK	1235	247
A-002	NORTH	3 BHK	1377	275.5

AM Shah's Enclave is planned around you



Amenities



Car Parking
Power Backup
Elevator / Lift
Rain Water Harvesting
24/7 Water Facility
CCTV
Round the Clock security

IT Parks

07 km - Infosys
12 km - Wipro
13 km - RMZ Ecospace
14 km - RGA Tech Park
10 km - Vrindavan Tech Village

Retail

07 km - Total Mall
09 km - Vega City Mall
10 km - Central Mall
11 km - Decathlon

Important Distances

03 km from Basapura Road Metro Station	09 km from Jayanagar
04 km from Singasandra Metro Station	10 km from Sarjapur
06 km from Electronic City	15 km from MG Road
07 km from Koramangala	15 km from Indiranagar
08 km from JP Nagar	48 km from the Airport

A brighter lifestyle awaits you in Bengaluru

PROXIMITIES

THE ROAD HOME IS TOO SHORT FOR LONG DRIVES.

@ AM Shah's Enclave, you are never too far away.....

Vivekananda Nagar, Devarachikkanahalli is a developing residential location in South Bangalore. It enjoys a connectivity to residential areas, shopping malls, educational institutions and healthcare/hospitals.

LOCATION MAP (NTS)



Schools & Colleges

- 02 km - Eurokids Preschool
- 02 km - Little Elly Perschool
- 02 km - Wisdomwood High School
- 04 km - Bangalore Culinary Institute
- 05 km - Oxford College
- 07 km - Vibgyor High School

Hospitals

- 03 km - Jayashree Mulyispeciality Hospital
- 06 km - Narayana Multispeciality Hospital
- 07 km - Apollo Hospital
- 09 km - Columbia Asia Hospital

Connectivity & Proximities.

Electronic city



AM
DEVELOPERS

Viratnagar Main Rd, NGR Layout, Roopena Agrahara, Bommanahalli, Bengaluru, Karnataka 560068

AM
Shah's
Enclave
The lifestyle you deserve

#11, 11th A Cross Rd, opp. shahi exports, Vivekananda Nagar, unit-14, Bengaluru, Karnataka 560068

CONTACT : + 91 7019908799
anilcherukuri1981@gmail.com