

A Project By  
  
**PRAMUKH®**  
A CLASS OF ITS OWN

Booking Contact  
+91 74062 58000

Architect  
ADDA architects  
& Urban designer

Structural consultant  
Technocrate  
Consultant

MEP consultant  
Malwawala Engineering  
Service Pvt. Ltd.



<https://pramukharisto.web.app>  
Email: [inquiry@pramukh.co.in](mailto:inquiry@pramukh.co.in)

RERA Registered No.  
PR/GJ/VALSAD/PARDI/Others/RAA09562/261221  
Web: [www.gujrera.gujarat.gov.in](http://www.gujrera.gujarat.gov.in)

Address  
Survey No. 1604 (Old Survey No. 162/1), Vapi - Daman Road,  
Chala, Vapi - 396191

  
**PRAMUKH  
ARISTO**  
3, 4 & 5 BHK  
Luxurious Apartments @ Chala

Turn to the **Best**





  
**PRAMUKH®**  
A CLASS OF ITS OWN

---

In our quest to create a legacy of timeless architecture which can be appreciated by the generations to come. We build projects that stand tall as an emblem of remarkable quality and exquisiteness. With every new, wonderful project of ours we move forward on the path of excellence.



Provide Quality  
Construction



Deliver Promises  
On Time



Offer Value for  
Money



PRAMUKH  
**ARISTO**  
3, 4 & 5 BHK  
Luxurious Apartments @ Chala

Aristo, a Greek name that means "The Best".  
Inspired by the name, Pramukh aims to deliver the best to you.  
It is where happiness and joy will be heard in every corner.

A palatial abode everyone desires but  
**A FEW CAN CALL IT HOME**

---

Everyone Craves for a blissful space where they can  
celebrate the little joys of life, every day. A Lavish Utopia  
where the luxuries of life are now at their command.  
A Beautiful Nirvana on earth called Home.



Live in  
Beautiful Homes



Rejuvenate in  
Elite Club House



Play in  
Exciting Sports Zone



Pramukh Aristo offers Grand Spaces that are symbols of perfection. There is enough room for you and your loved ones in these ultra - luxurious Homes.

Exclusivity  
at its **Best**



Elegance  
at its  
**Best**

A home should have enough space to accommodate all our loved ones. Pramukh Group brings you Pramukh Aristo, the best spacious homes in chala.



Leisure  
at its  
**Best**

Enjoy the small and big moments of life in the bliss of the sky, surrounded by greens. A living room where you can enjoy 'Family Time'.

Joy at its  
**Best**

Pramukh Aristo offers amenities like a Cafeteria, Indoor - Outdoor Games, a Swimming Pool and a Garden where your kids can enjoy.





A well-thought and stylish design of Pramukh Aristo will transform your life and give it the touch of luxury that you desire.

Luxury  
at its **Best**



Comfort  
at its  
**Best**

Home is where the heart is, and we give you a home where there is enough space for your Body, Heart and Mind to Relax.

Amenities  
at its  
**Best**

With amenities like a Senior Citizen Park and Cafeteria, Pramukh Aristo has something for everyone.



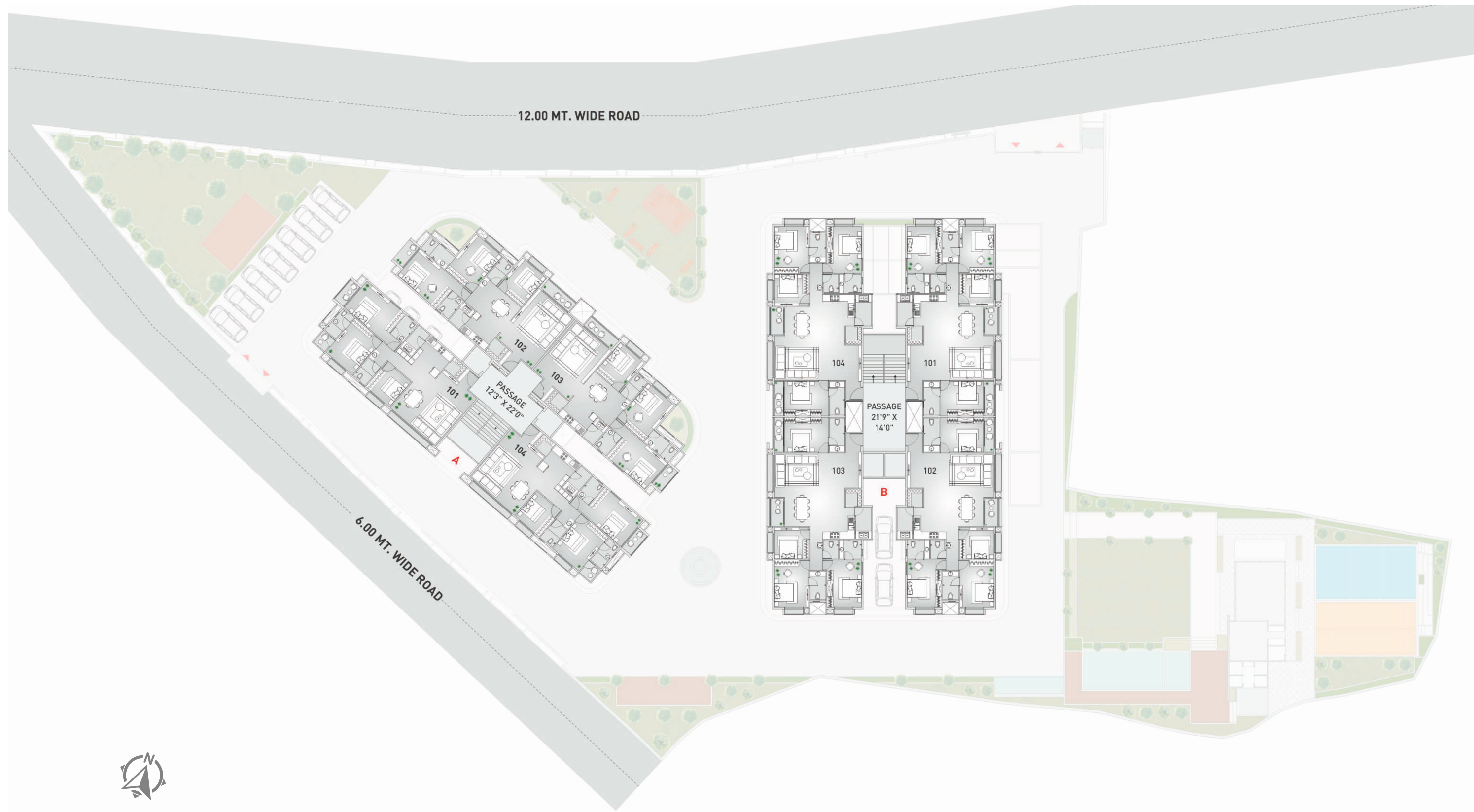


## GROUND AMENITIES

- 01. Reception & Waiting
- 02. Outdoor Cafeteria
- 03. Event Garden
- 04. Children Play Area
- 05. Senior Citizen Area
- 06. Water Body
- 07. Gazebo / Pavilion
- 08. Pick-up Stand
- 09. Security Cabin
- 10. EV Charging Provision
- 11. Ground Floor Parking
- 12. Swimming Pool
- 13. Lawn Area

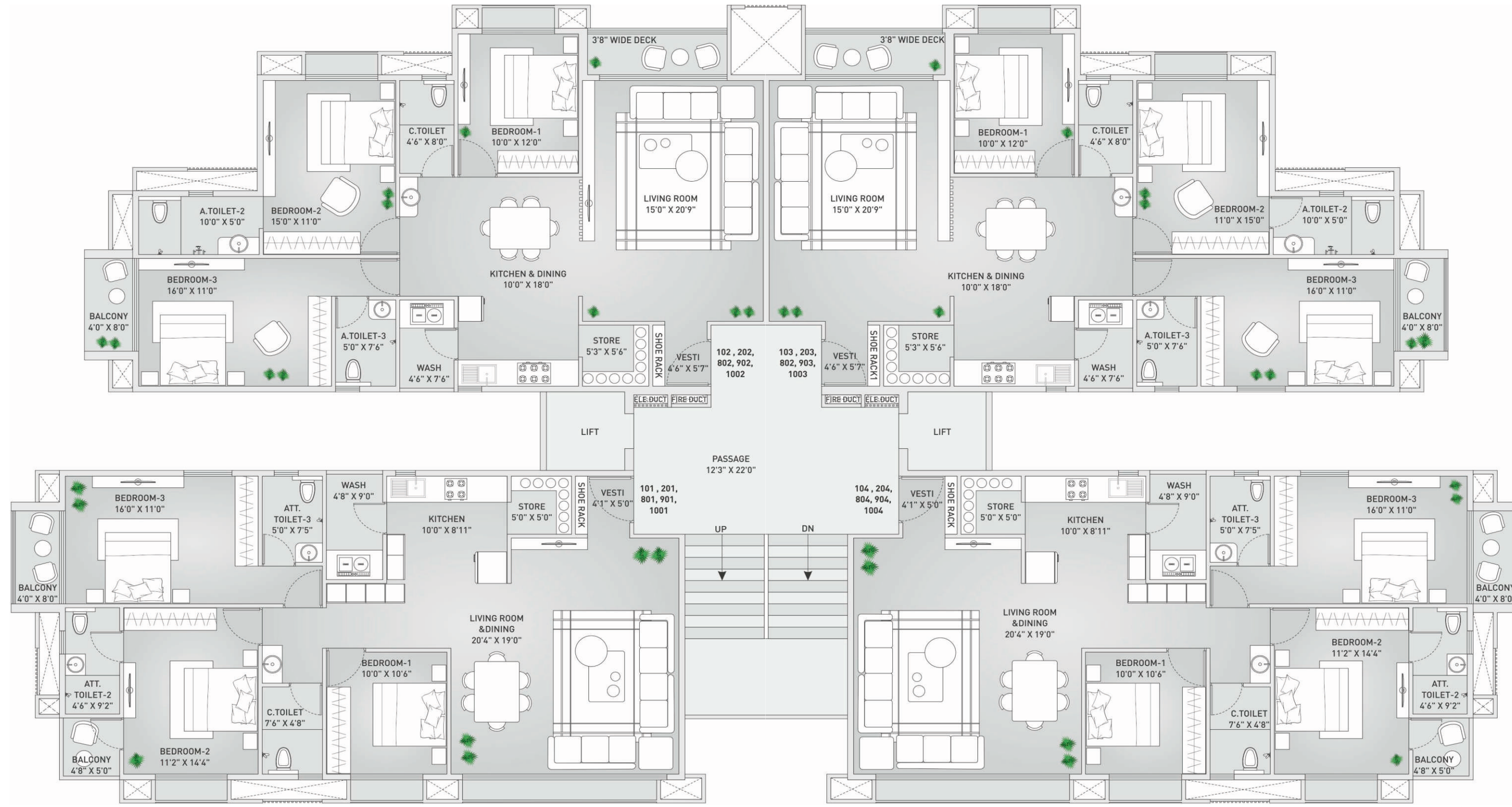


Ground Floor Plan



Typical Floor Plan

Typical Floor Plan (1<sup>ST</sup> TO 2<sup>ND</sup>, 8<sup>TH</sup> TO 10<sup>TH</sup> FLOOR)  
(Block A) - 3 BHK



← Typical Floor Plan  
(Block A) - 3 BHK  
Block 101 & 104

01	Vesti	4'6" x 5'0"
02	Living Room & Dining	20'4" x 19'4"
03	Shoe Rack	-
04	Store	5'0" x 5'0"
05	Kitchen	10'0" x 14'10"
06	Bedroom - 1	10'0" x 10'6"
07	Vertical Store	-
08	Wash	4'8" x 9'0"
09	Dryer	-
10	Washing Machine	-
11	Att. Toilet - 3	5'0" x 7'5"
12	C. Toilet - 1	7'6" x 5'0"
13	C. Bedroom - 3	16'0" x 11'0"
14	M. Bedroom - 2	11'2" x 14'4"
15	Balcony	4'8" x 5'0"
16	Att. Toilet - 2	4'6" x 9'2"
17	Balcony	4'0" x 8'0"

Block 102 & 103

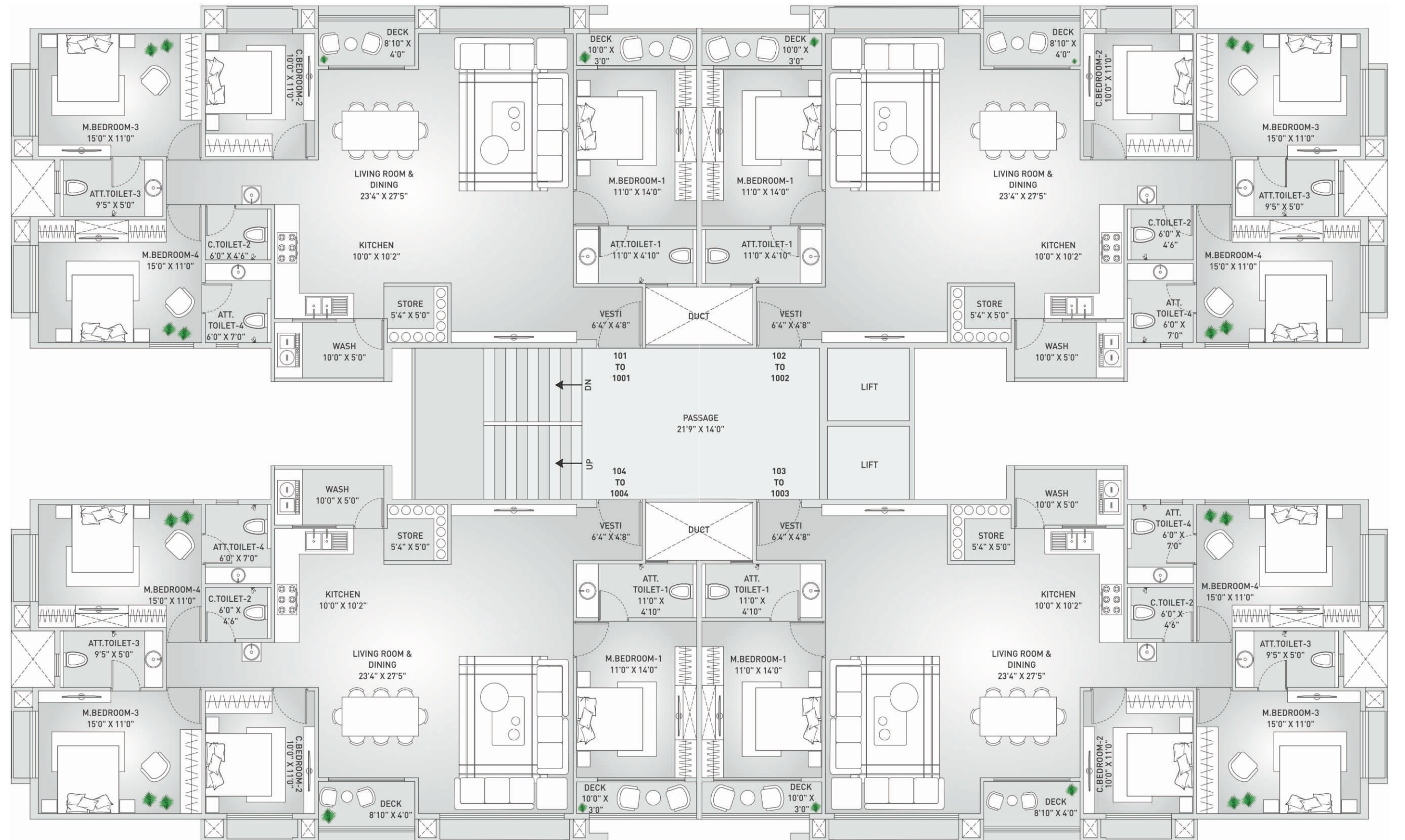
01	Vesti	4'6" x 5'7"
02	Living Room	15'0" x 20'9"
03	Shoe Rack	-
04	Wide Deck	12'0" x 3'8"
05	Store	5'3" x 5'6"
06	Kitchen & Dining	10'0" x 18'0"
07	Bedroom - 1	10'0" x 12'0"
08	C. Toilet	4'6" x 8'0"
09	Wash	4'6" x 7'6"
10	Washing Machine	-
11	Dryer	-
12	Att. Toilet - 3	5'0" x 7'6"
13	Bedroom - 2	15'0" x 11'0"
14	Bedroom - 3	16'0" x 11'0"
15	Att. Toilet - 2	10'0" x 5'0"
16	Balcony	4'0" x 8'0"

Typical Floor Plan  
(Block B) - 4BHK

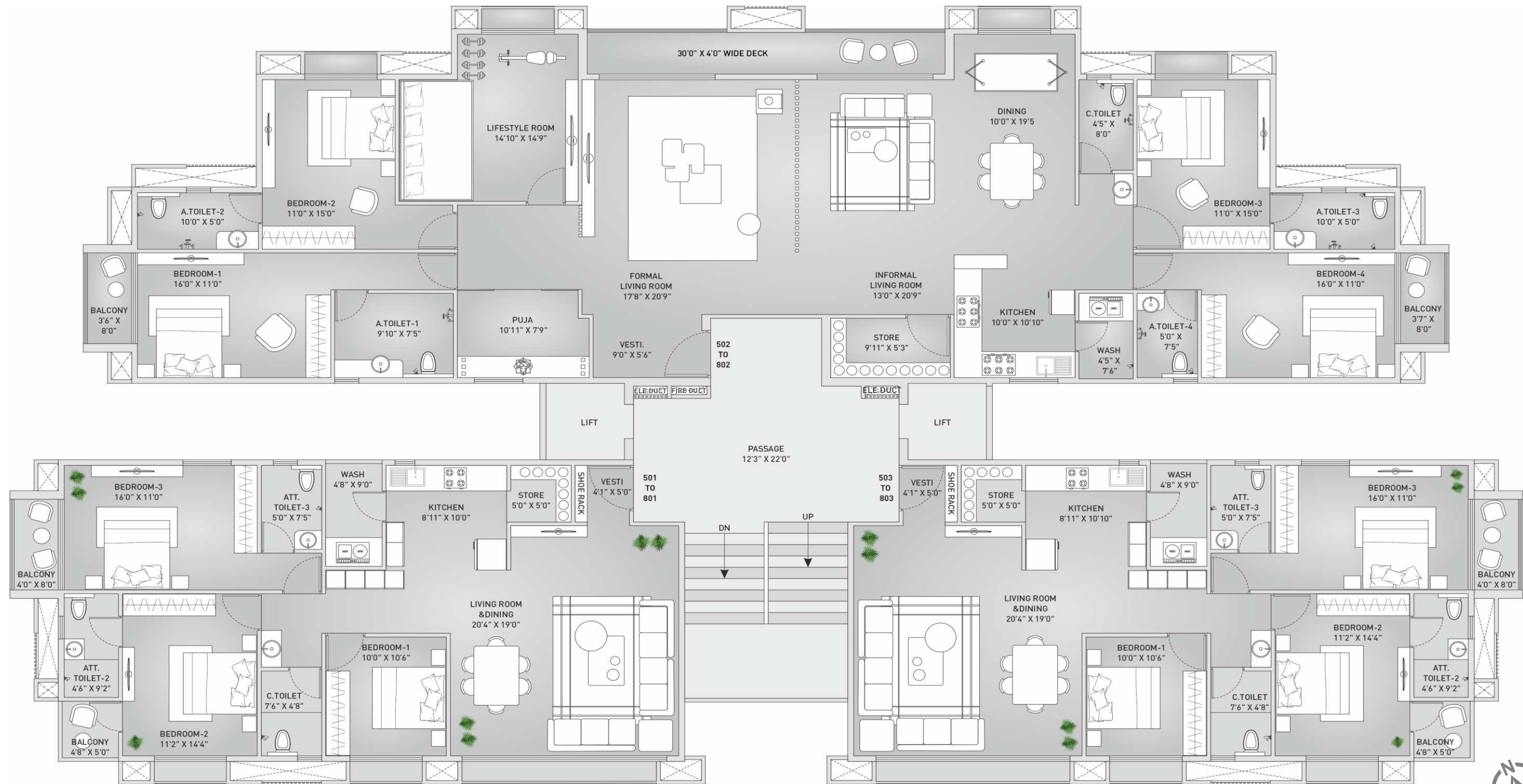


01	Vesti	6'0" x 5'0"
02	Living Room & Dining	23'4" x 27'5"
03	Att. Toilet - 1	11'0" x 4'10"
04	Master Bedroom - 1	11'0" x 14'0"
05	Deck	10'0" x 3'0"
06	Store	5'4" x 5'0"
07	Deck	10'0" x 4'0"
08	Kitchen	10'0" x 10'2"
09	Wash	10'0" x 5'0"
10	Washing Machine	-
11	Dryer	-
12	Att. Toilet - 4	6'0" x 7'0"
13	C. Toilet - 2	6'0" x 4'6"
14	C. Bedroom - 2	10'0" x 11'0"
15	M. Bedroom - 3	15'0" x 11'0"
16	At. Toilet - 3	9'5" x 5'0"
17	M. Bedroom - 4	15'0" x 11'0"

Typical Floor Plan (1<sup>ST</sup> TO 10<sup>TH</sup> Floor)  
(Block B) - 4BHK



Typical Floor Plan (3<sup>RD</sup> TO 7<sup>TH</sup> Floor)  
 (Block A) 3 + 5 BHK



## Exclusive Amenities

- |                                     |                                    |                                      |
|-------------------------------------|------------------------------------|--------------------------------------|
| 1. Security Cabin                   | 8. Shower Area                     | 15. Children Play Area With Pavilion |
| 2. Pick - Up Zone                   | 9. Cafeteria With Open Sitting     | 16. Outside Setting Area             |
| 3. Reception & Waiting Lounge       | 10. Common Kitchen / Toilet        | 17. Yoga / Meditation Deck           |
| 4. Kids Pool                        | 11. Lawn Area                      | 18. Gazebo                           |
| 5. Swimming Pool With Water Cascade | 12. Path Way                       | 19. Zen Garden                       |
| 6. Pool Side Seat - out             | 13. Water Body With Deck           | 20. Mini Golf                        |
| 7. Changing Room For Male & Female  | 14. Senior Citizen Plaza With Deck | 21. Toddler Play Area                |

## External Specifications

### Facade Treatment

- Double coat roller finished plaster with rustic texture.
- Weather shield paint of ICI standard make.

### Entrance Foyer & Lobby

- Well designed entrance with waiting area foyer and elegantly.
- Designed lobby at all the floor.

### Parking

- Site development inter locking paver block / R.C.C. trimix with allotted parking.
- 1 level basement parking.
- EV charging facility.

### Elevators

- Two fully automatic passenger elevators of Kone / Schindler / equivalent make provided to each buildings.

### Water Supply

- Sufficient capacity of U.G.W.T. & O.H.W.T.
- Bore water & separate tanks of fire safety.

### Electric Power Backup

- Silent generator of adequate capacity for lift water pump and common facilities.
- Designer light fitting for common passage and campus.

### Security System

- 24 x 7 gated security.
- CCTV camera coverage in reception campus and basement area.

### Project As Per Green Building Concept Terrace

- Double coat water proofing.
- China mosaic flooring.
- Terrace garden with other amenities.

### Technical Specifications

- Earthquake resistance structure design as per IS code.

## Apartment Specifications

### Floor Finish

- 800\*1600 vitrified tiles finish tiles in living, dining, kitchen area and bedroom.

### Deck

- Deck with designer backup point in floor.
- M.S. / glass railing.

### Kitchen

- Vitrified / Granite / Quartz kitchen platform with high quality sink.
- High quality vitrified dado tiles up to lintel level.
- Gas connection on platform and provision for R.O. water purification.

### Wall Surface

- All plastered wall with primer finished.

### Toilets

- Decorative high quality 2' \*2' vitrified tiles up to lintel level with standard quality.
- Sanitary wares and C.P. fittings.

### Doors & Windows

- Designer main door with wooden frame provided with premium lock & fittings.
- Internal door frames are provided with granite.
- All windows opening provided with granite frame and good quality aluminum anodized sliding window with reflective glass for heat reduction.

### Electricals

- Sufficient points in concealed copper wiring of Finolex Polycab I Anchor or equivalent.
- Standard quality Modular switches.

### Television & Internet

- Convenient provision of internet telephone and television point in each flat.





# Key Plan

