

TREELAND
A Premium Residential Township

CREDITS:

Project Architect: **Ar. Umesh Bagul, Nashik**

Structural Consultant: **JW Consultants LLP, Pune**

Legal Advisor : **Adv. S.L. Deshpande, Nashik**

Landscape Architect: **SAMA Landscape, Pune**

+91 82639 18233 / 82639 18234

Site Address: TREELAND, Survey No. 21,
Near Bobby's Hotel, Gangapur Road, Nashik - 422025.

www.abhdevelopers.com/treeland

Disclaimer: The information contained in this communication is indicative of the kind of development that is proposed. It is prepared and issued in good faith and is for guidance only. It does not constitute part of an offer or contract. Subject to the approval of the authorities or in the interest of continuing improvement, the developers reserve the right to alter/change the layout plans specifications or features without prior notice or obligation. Maha RERA Registration No.: P51600025058 and is available on the website <https://maharera.mahaonline.gov.in>. Terms and conditions apply.

Image shot on location.

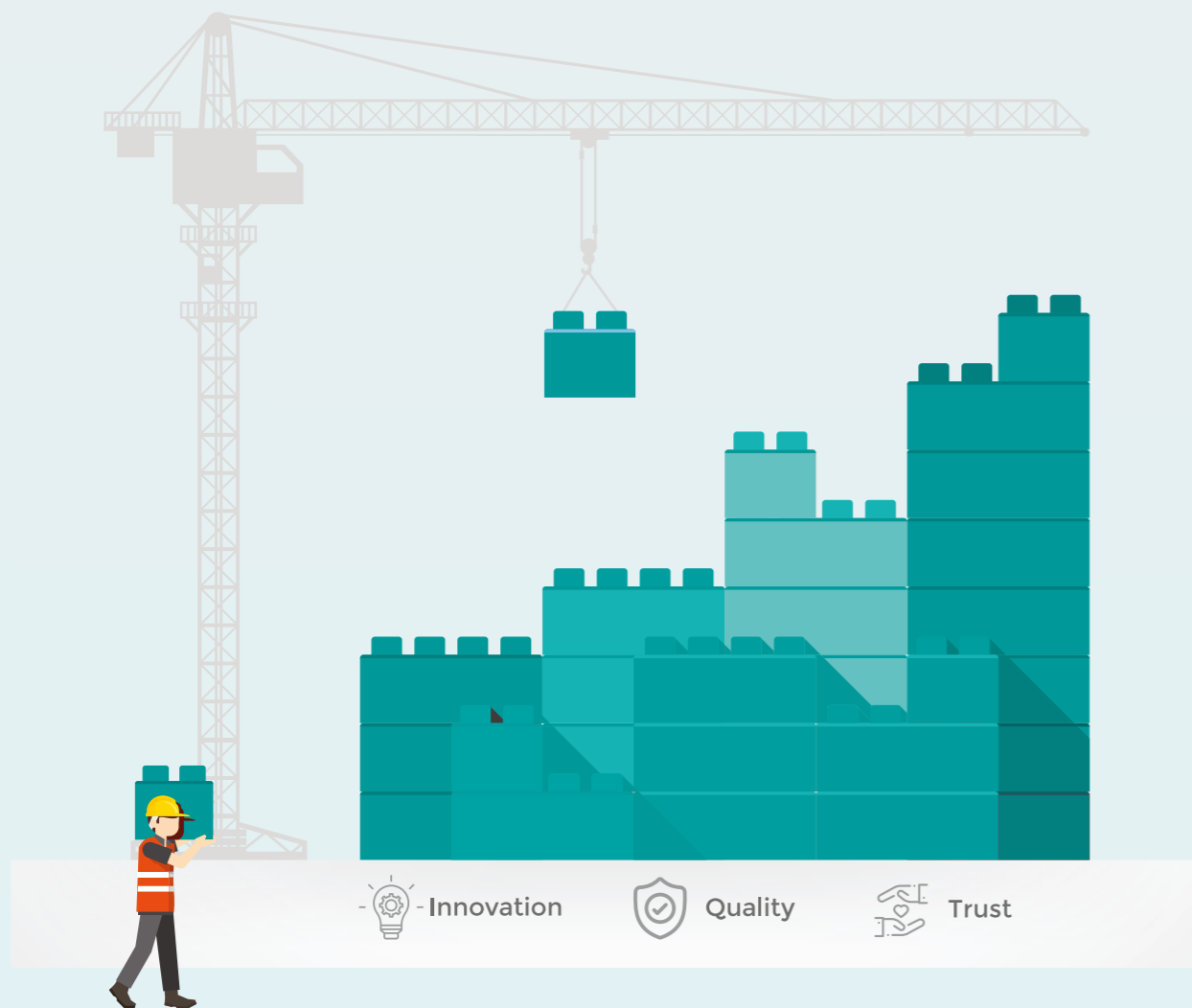


ALWAYS BUILDING HAPPINESS.

An acronym for Atal, Bagmar and Hanswani, the ABH Group was founded when three visionary infrastructure developers with a collective experience of 25+ years came together to redefine the real estate landscape of Nashik.

ABH Group believes in one philosophy - Always Building Happiness. It is a well-established name dealing in land, layouts and construction (Residential & Commercial).

At ABH, we aim to create homes that will elevate the residents' standard of living through memorable living experiences. And as a reliable developer, ABH positively contributes to the environment by developing sustainable & eco-friendly homes. In a nutshell, all of these result in quality homes, where happy communities can live, play and grow.



GANGAPUR ROAD - NASHIK'S BLESSED, UPSCALE LOCATION.

Over the years, Gangapur Road has developed as Nashik's most preferred residential destination and has experienced rapid expansion. Running parallel to the Godavari River, this suburb's growth is primarily attributed to the pleasant weather, landscaped roads and a green blanket of trees, making it the location of choice for developers and homebuyers alike.

Gangapur Road's excellent civic and social infrastructure, its close proximity to the Satpur industrial area with premier schools and colleges in the immediate surrounding has led to high demand from industrial employees, students and families alike. Quite naturally, this growing demand has led to a rise in the residential real estate as well.

WELCOME TO TREELAND. A LAND WHERE LIFE GROWS ON YOU!

TREELAND is ABH's prime development on Gangapur Road,
with 900+ units comprising of 2, 3 & 4 BHK premium apartments.



TREELAND[®]

A Premium Residential Township

Planned and developed for a complete living experience, Treeland seeks its inspiration from nature, and the project is designed and built around it. With the calm Godavari River on one side offering peacefulness to the project, the lush green cover enveloping the estate will give you much-needed relief from the din of urban life.

Furthermore, the thoughtfully designed residences here, with special focus on meaningful amenities, will only make living here a truly relaxing experience. Come home to Treeland, and let the good life grow on you.



Artist's Impression.



VISIT A HILL STATION OR A RIVER EVERY DAY.

A holiday amidst the hills or by the riverside is always rejuvenating. This is why, at Treeland, we have mimicked the same experience for you in the form of dedicated River-view decks. It will serve as a perfect spot to watch the free-flowing river as it cleanses your soul. And to enrich your soothing experience, exercise your feet and relax your mind at the Goda Park at Treeland.



Image shot on location.

25 STOREYS OF ELEVATED LIVING EXPERIENCE.


The design philosophy at the core is all about uniting the natural habitat outside with spaces that breathe inside. Therefore, every resident here can enjoy the goodness of cool breeze, bright sunlight and plenty of pure oxygen.

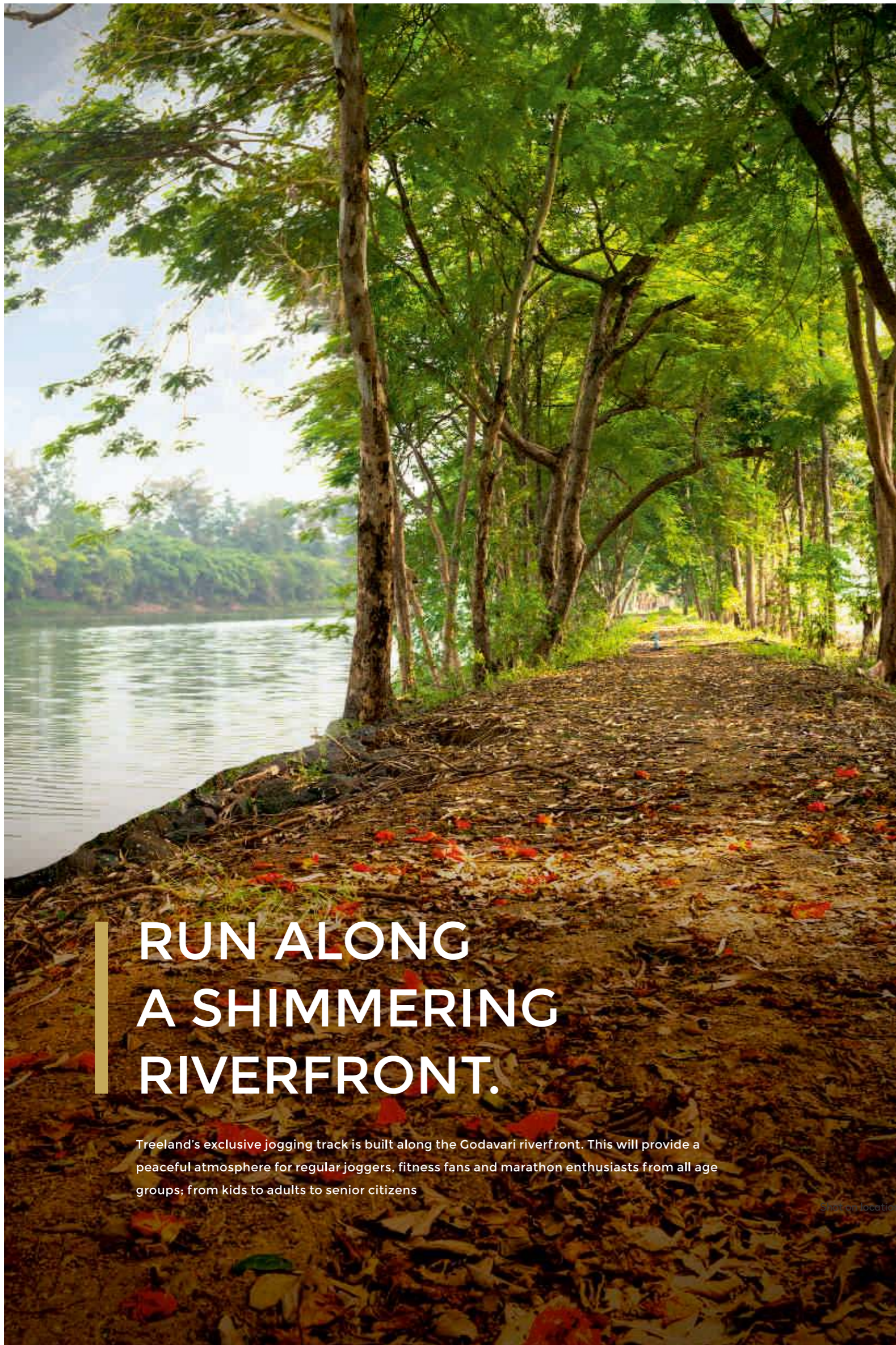
The homes are responsibly designed to ensure excellent usage of space, a generous floor to ceiling height with a layout that also delivers maximum privacy for the residents.

Step in and experience the luxury of elevated living.



Artist's Impression.





RUN ALONG A SHIMMERING RIVERFRONT.

Treeland's exclusive jogging track is built along the Godavari riverfront. This will provide a peaceful atmosphere for regular joggers, fitness fans and marathon enthusiasts from all age groups; from kids to adults to senior citizens

Image shot on location.

Image shot on location.



Less Concrete
More Jungle



Gangapur
Road's
first gated
community



Take a Deep
Dive
into Infinity

THE ADDRESS OF JOYFUL LIFE.

Welcome your
guests in
style



Calm river
facing homes to
soothe your
senses



Over 40
immersive
experiences



Images are Actual/Artist's Impressions/Representation purpose only.





Kitchen



Dining Room



Bedroom





WORLD-CLASS LIFESTYLE AMENITIES.

INDOOR GAMES



- Chess
- Carrom
- Table Tennis
- Snooker Table
- Foos Ball
- Air Hockey

OUTDOOR SPORT



- Net Cricket
- Basketball
- Badminton
- Multi-Purpose Court
- Jogging Track
- Outdoor Green gym

CLUBHOUSE-1

- Banquet Hall
- Swimming Pool
- Kids Swimming Pool
- Party Lawn
- Jogging Track
- Multi-Purpose Room for Yoga & Aerobics
- Gym
- Indoor games

CLUBHOUSE-2



- Banquet Hall
- Party Lawn
- Guest Rooms - 5
- Jogging Track
- Swimming Pool
- Kids Swimming Pool
- Gym
- Indoor games

SOCIAL HOTSPOTS

- Nature Walk
- Tree Deck
- Oxygen Park
- Tree Plaza
- Amphitheatre
- Mini Theatre
- Library
- Temple
- Senior Citizen Corner with news paper facility

- Fruit Garden
- Urban Forest
- Meditation Area
- Instrumental Garden
- River view sit outs
- Aroma Garden
- Cafeteria
- Acupressure walkway



A TOWNSHIP DESIGNED FOR THE FUTURE.



- Water Meter
- Fiber Connected Homes
- Solar Energy
- Electrical Charging Points for E-Vehicles in every Car Park
- Heat Pump / Geyser
- 3 Tier Security System
- All In one Dish TV

GREEN BUILDING. GREENER VICINITY.



- Cross Ventilation (More Airflow. Less Stress)
- RWH (More Water Less Overflow)
- STP (More Recycling Less Sewage)
- OWC (More Fertility Less Waste)
- LED (More Savings Less Usage)
- Nature Friendly Products
- Garbage Chute for Each Building

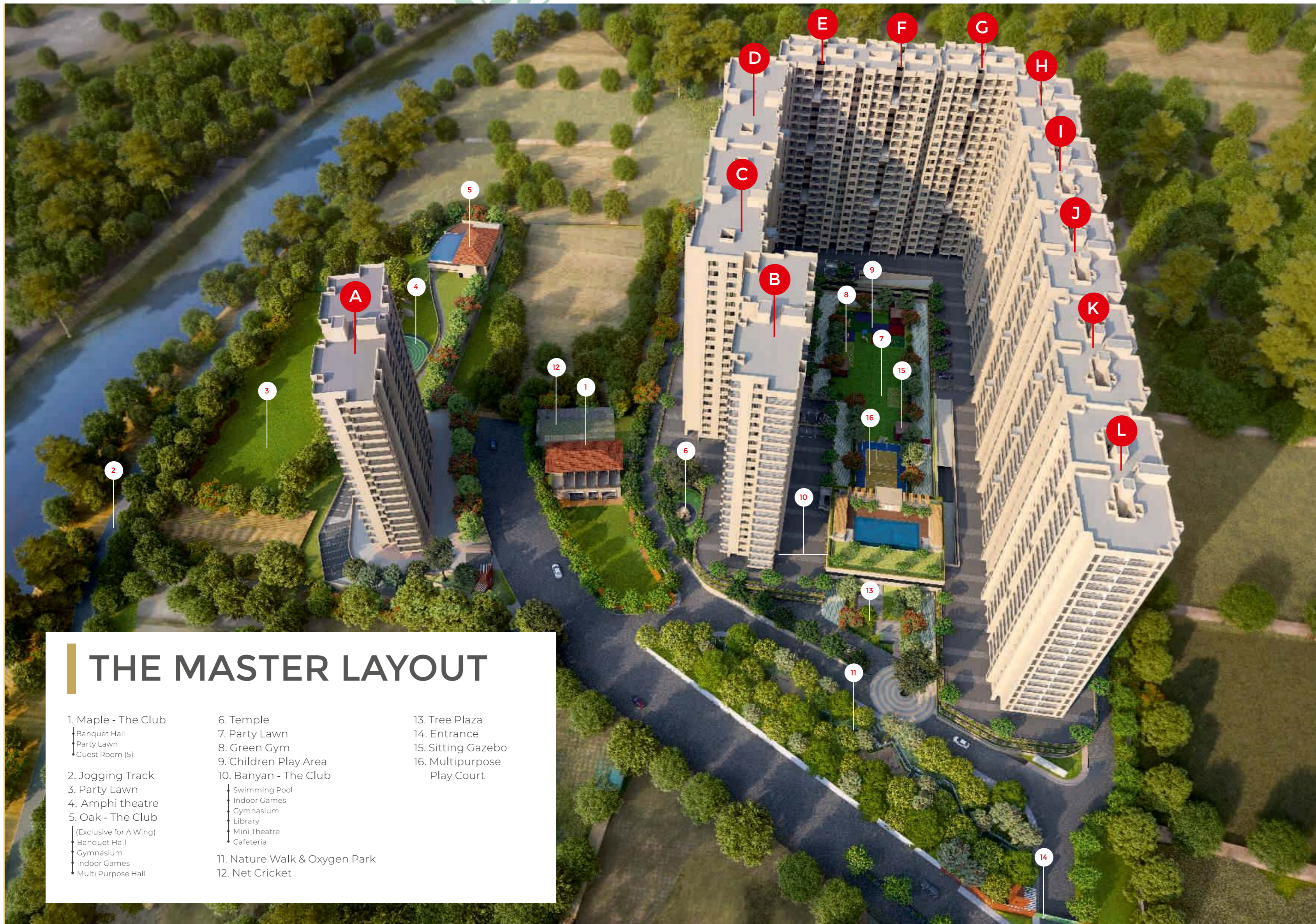
S.O.S AMENITIES

- CCTV
- Video Door Phone
- D. G. backup for Common Area Campus & Elevators
- Stretcher Elevators for Each Building



WHERE LIFE GROWS ON YOU!





THE MASTER LAYOUT

1. Maple - The Club

- Banquet Hall
- Party Lawn
- Guest Room (5)

2. Jogging Track

3. Party Lawn

4. Amphi theatre

5. Oak - The Club

- (Exclusive for A Wing)
- Banquet Hall
- Gymnasium
- Indoor Games
- Multi Purpose Hall

6. Temple

7. Party Lawn

8. Green Gym

9. Children Play Area

10. Banyan - The Club

- Swimming Pool
- Indoor Games
- Gymnasium
- Library
- Mini Theatre
- Cafeteria

11. Nature Walk & Oxygen Park

12. Net Cricket

13. Tree Plaza

14. Entrance

15. Sitting Gazebo

16. Multipurpose Play Court

