

SIDDHA WATER FRONT

Water flows. Water caresses.
Water cures. Water calms.



Discover the joy of living by a beautiful natural waterbody.





Siddha WaterFront

**An opportunity to spend
a lifetime by a lake. Finally.**

- Sweeping lake-front
- Serene lake view
- Open areas and gardens landscaped by experts
- Lake hemmed by joggers' track, walking trail, benches and wooden jetties
- Adequate aeration to support a healthy aquatic life

Siddha WaterFront

Nature and urban proximity. Both.

Landscaped features

Sprawling waterbody including a lotus pond and fountains

Wooden benches skirting the waterbody | Trees and foliage

Joggers' track





Conveniences

- Residents' association room
- Living quarters for property manager
- Guest house
- Transportation connectivity to the main road
- Residents' cycle stand





Siddha WaterFront
is equipped to handle your
health and leisure needs with
a full-fledged in-complex club.



Amenities

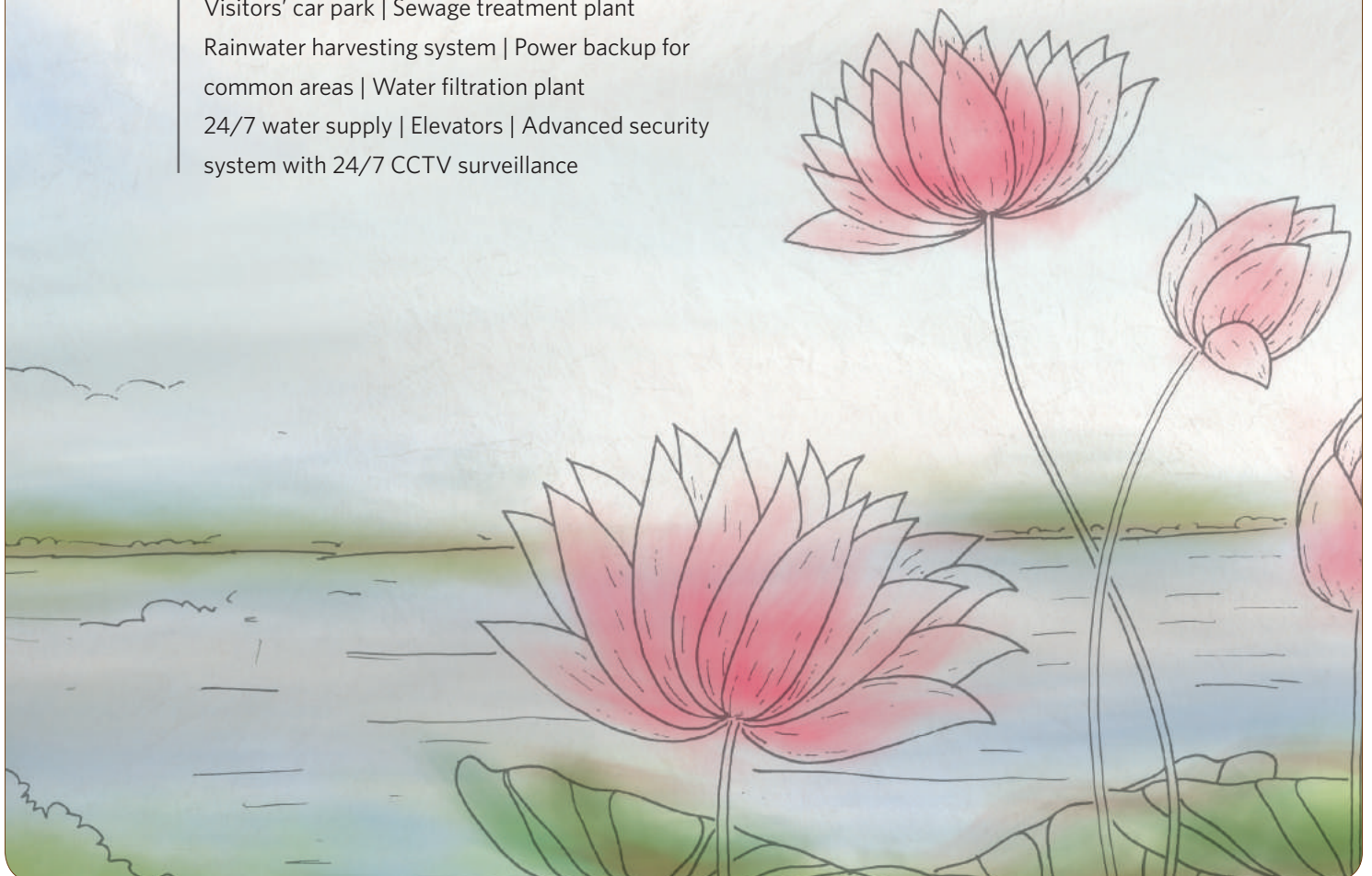
Amphitheatre | Crèche | Yoga and meditation zone | Banquet hall | Swimming pool | Library and reading room | Badminton court | Gymnasium | Children's play area | Toddlers' zone | Multi-activity room | Indoor games: Table tennis/Pool table/Carrom/Chess | Steam and massage room | Cafeteria





Facilities

Advanced fire fighting system | Intercom
Cable/DTH point | Broadband point
Visitors' car park | Sewage treatment plant
Rainwater harvesting system | Power backup for
common areas | Water filtration plant
24/7 water supply | Elevators | Advanced security
system with 24/7 CCTV surveillance



Quality. The only hallmark.

Siddha WaterFront's lake-facing property comes with an additional feature - the Siddha trust-mark. A real estate development group known for its commitment to detail, finishing, aesthetics, usage of quality material and uncompromising standards. The result is that Siddha properties have delivered a marked growth in property value over time.



Specifications

SUPER-STRUCTURE

Earthquake resistant RCC framed structure with Monolithic concrete

KITCHEN

Floor: Ceramic tiles

Counter tops: Granite with steel sink

Dados: Ceramic tiles up to a height of 2 ft from the granite top

TOILET

Floor: Ceramic tiles

Dados: Ceramic tiles up to a height of 7 ft

INTERIOR

Internal walls: RCC/Brick wall overlaid with white cement putty

Doors: Doors with tough timber frames and solid-core flush shutters

Windows: Aluminium frames with fully-glazed shutters and quality fittings

Flooring: Vitrified tiled flooring in all bedrooms, living rooms/dining rooms

SANITARY WARE

Chromium-plated fittings, white high quality porcelain fixtures

ELECTRICALS

Superior quality concealed copper (fire resistance low smoke) wiring

Modular switches and miniature circuit breakers, TV sockets, broadband point

TELEPHONE WIRING

Central distribution console, networked across all apartments

EXTERIOR

Latest weatherproof, non-fading exterior finish of the highest quality

Lift Facia

Partly granite and partly wooden cladding

Location



Map not to scale

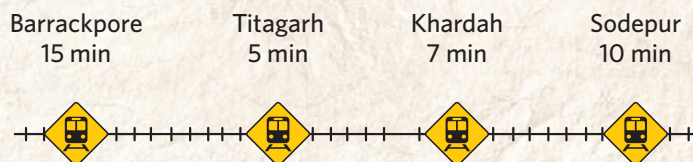
Nearby

| | | |
|-----------------------------------|--------|--------|
| Rahara Ramakrishna Mission School | 2 min | 600 m |
| Rahara Bazaar | 5 min | 1.3 km |
| Khardah Station | 7 min | 1.8 km |
| Khardah Bus Stand | 7 min | 2.3 km |
| BMRC Hospital | 10 min | 2.5 km |
| Sriniketan Shopping Mall | 15 min | 5 km |

Estimated distance and time for private transportation



Nearby railway stations



Map not to scale

SIDDHA

Home is where you discover the real you. Siddha's aim is to develop high quality homes within your budget and add to your pleasant discoveries. Since its inception in 1986, Siddha has been crafting residential and commercial spaces with a difference, to make good living affordable in Kolkata, Jaipur, Mumbai and Bengaluru.

Siddha's perseverance and passion for quality homes drive it forward with every new project. Led by Group Chairman Chandra Prakash Jain and Group Managing Director Sanjay Jain, Siddha creates and sells high-quality housing in India.

Siddha believes that the magic of craftsmanship lies beyond the reality of construction. It is the ability to sculpt better lives by designing and crafting living spaces that sets Siddha apart.

Architect



Agrawal & Agrawal, led by Jay Prakash Agrawal, the renowned architect, ranks amongst Eastern India's leading architectural practitioners. It is known for its residential apartments, commercial complexes, townships, IT infrastructure, complexes, malls, hotels, institutional and leisure projects.

Legal Adviser



Saha & Ray, Advocates, Kolkata, is a premier law firm specialising in real estate and property laws. Armed with international affiliations and global terms of reference, the firm is headed by Avik Saha and Jayati Ray.



Green homes for you and the environment

Silver rated certified project under IGBC's 'Green Homes' norms.

Siddha WaterFront is registered as a 'Green Homes' project by the Indian Green Building Council (IGBC). 'Green Homes' is the first rating programme developed in India, exclusively for the residential sector.

SIDDHA

CORPORATE OFFICE

Siddha Park 99A Park Street Kolkata 700016 India

SITE OFFICE

Chowdhury More Old Calcutta Road
Near Rahara Ramakrishna Mission School Khardah
Off BT Road Kolkata 700118 India

Download the
Siddha Group App



Follow us on



This document is not a legal offering and all features, specifications, dimensions, amenities, layout images and other aspects of the apartments/building(s)/complex mentioned in this document are only representational, informative and not in scale, which may be subject to change/revision/alteration in terms of approvals, orders, directions and/or regulations of the concerned/relevant authorities and/or compliance with laws/regulations in force from time to time.

Phase II HIRA/P/NOR/2020/000950 | hira.wb.gov.in

Phase I HIRA/P/NOR/2018/000185 | hira.wb.gov.in

TATA CAPITAL
HOUSING FINANCE LIMITED

PLANS

MASTER PLAN

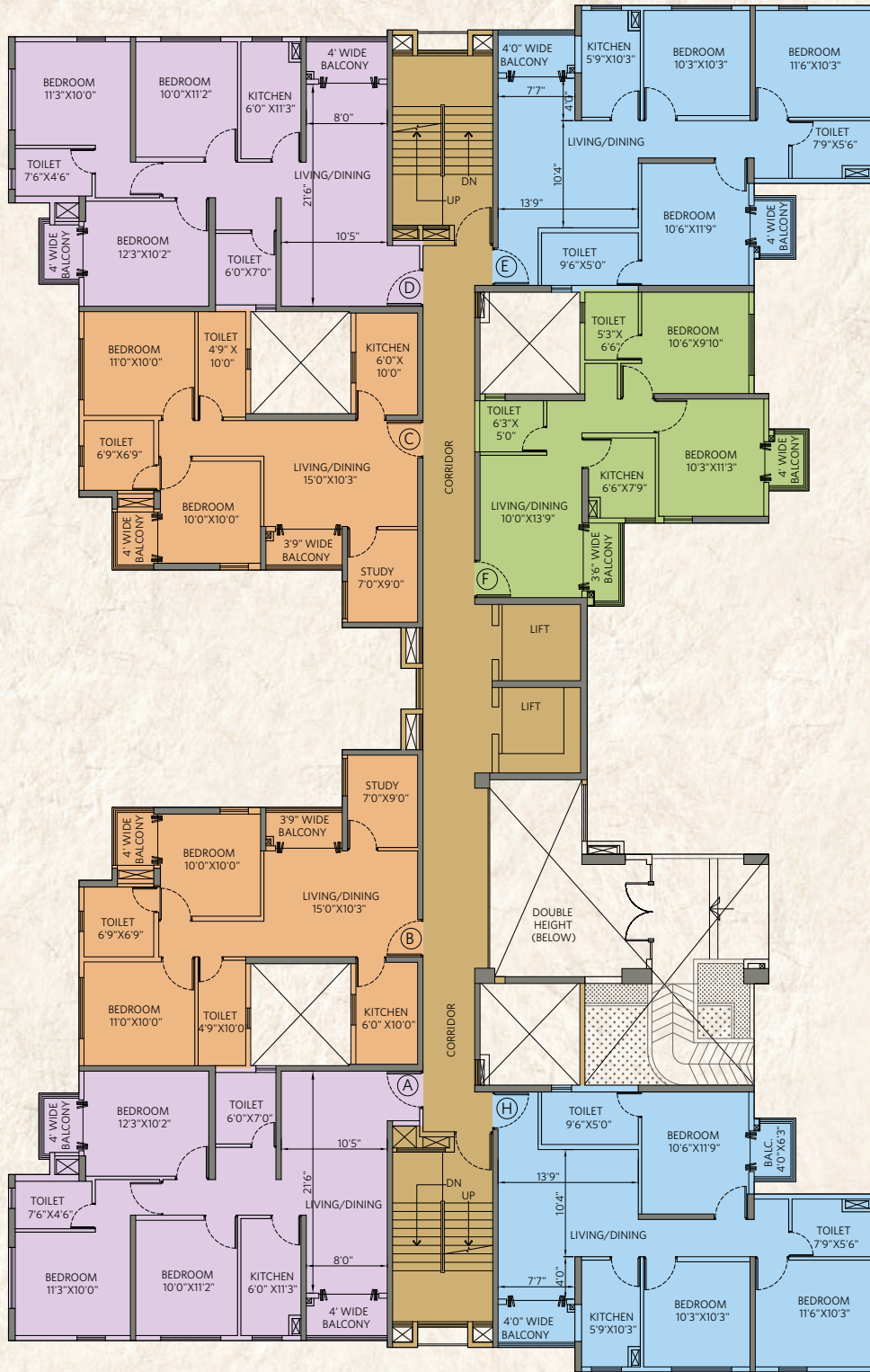


LEGENDS

1. PROPOSED FUTURE EXPANSION AREA
2. WATERBODY
3. DECK
4. MLCP
5. CAR PARKING
6. PLAZA
7. SWIMMING POOL
8. PUBLIC OPEN SPACE
9. CLUB
10. PODIUM
11. COMMERCIAL BLOCK

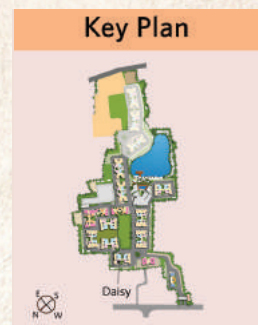


Daisy/Block 1A 1st Floor Plan



| Flat # | Flat Type | BUA | CA | BA |
|--------|-----------|-----|-----|----|
| A | 3BHK+2T | 972 | 845 | 55 |
| B | 2BHK+2T+S | 776 | 642 | 50 |
| C | 2BHK+2T+S | 776 | 642 | 50 |
| D | 3BHK+2T | 975 | 848 | 55 |
| E | 3BHK+2T | 924 | 795 | 55 |
| F | 2BHK+2T | 675 | 560 | 51 |
| G | NA | NA | NA | NA |
| H | 3BHK+2T | 930 | 795 | 55 |

BHK = Bedroom, Hall, Kitchen T = Toilet S = Study
 BUA = Built-up Area, CA = Carpet Area, BA = Balcony Area



Daisy/Block 1A
1st Floor Plan



3 Bedroom Hall Kitchen + 2 Toilet (Flat A)

Daisy/Block 1A
Typical Floor Plan (2nd to 14th)



2 Bedroom Hall Kitchen + Study + 2 Toilet (Flat C)

Orchid/Block 1B 1st Floor Plan



| Flat # | Flat Type | BUA | CA | BA |
|--------|-----------|-----|-----|----|
| A | 3BHK+2T | 972 | 845 | 55 |
| B | 2BHK+2T+S | 776 | 642 | 50 |
| C | 2BHK+2T+S | 776 | 642 | 50 |
| D | 3BHK+2T | 975 | 848 | 55 |
| E | 3BHK+2T | 924 | 795 | 55 |
| F | 2BHK+2T | 675 | 560 | 51 |
| G | NA | NA | NA | NA |
| H | 3BHK+2T | 930 | 795 | 55 |

BHK = Bedroom, Hall, Kitchen T = Toilet S = Study
 BUA = Built-up Area, CA = Carpet Area, BA = Balcony Area



Orchid/Block 1B
1st Floor Plan



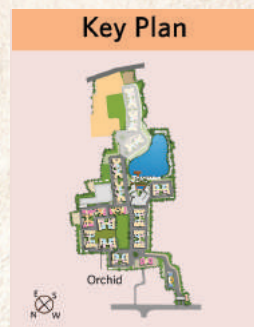
3 Bedroom Hall Kitchen + 2 Toilet (Flat A)

Orchid/Block 1B Typical Floor Plan (2nd to 14th)



| Flat # | Flat Type | BUA | CA | BA |
|--------|-----------|-----|-----|----|
| A | 3BHK+2T | 972 | 845 | 55 |
| B | 2BHK+2T+S | 776 | 642 | 50 |
| C | 2BHK+2T+S | 776 | 642 | 50 |
| D | 3BHK+2T | 975 | 848 | 55 |
| E | 3BHK+2T | 924 | 795 | 55 |
| F | 2BHK+2T | 675 | 560 | 51 |
| G | 2BHK+2T | 675 | 563 | 48 |
| H | 3BHK+2T | 924 | 795 | 55 |

BHK = Bedroom, Hall, Kitchen T = Toilet S = Study
BUA = Built-up Area, CA = Carpet Area, BA = Balcony Area



Orchid/Block 1B
Typical Floor Plan (2nd to 14th)



2 Bedroom Hall Kitchen + 2 Toilet (Flat F)

Daffodil/Block 1C 1st Floor Plan



COMMON OPEN TERRACE - I

| Flat # | Flat Type | BUA | CA | BA |
|--------|-----------|-----|-----|----|
| A | 3BHK+2T | 972 | 844 | 56 |
| B | 2BHK+2T+S | 776 | 642 | 51 |
| C | 2BHK+2T+S | 776 | 642 | 51 |
| D | 3BHK+2T | 975 | 847 | 56 |
| E | 3BHK+2T | 924 | 795 | 55 |
| F | 2BHK+2T | 675 | 564 | 51 |
| G | NA | NA | NA | NA |
| H | 3BHK+2T | 930 | 795 | 55 |

BHK = Bedroom, Hall, Kitchen T = Toilet S = Study
BUA = Built-up Area, CA = Carpet Area, BA = Balcony Area



Daffodil/Block 1C
1st Floor Plan



3 Bedroom Hall Kitchen + 2 Toilet (Flat D)

Daffodil/Block 1C
Typical Floor Plan (2nd to 14th)



2 Bedroom Hall Kitchen +Study + 2 Toilet (Flat B)

Jasmine/Block 1D 1st Floor Plan



| Flat # | Flat Type | BUA | CA | BA |
|--------|-----------|-----|-----|----|
| A | 3BHK+2T | 972 | 845 | 55 |
| B | 2BHK+2T+S | 776 | 642 | 50 |
| C | 2BHK+2T+S | 776 | 642 | 50 |
| D | 3BHK+2T | 975 | 848 | 55 |
| E | 3BHK+2T | 924 | 795 | 55 |
| F | 2BHK+2T | 675 | 560 | 51 |
| G | NA | NA | NA | NA |
| H | 3BHK+2T | 930 | 795 | 55 |

BHK = Bedroom, Hall, Kitchen T = Toilet S = Study
 BUA = Built-up Area, CA = Carpet Area, BA = Balcony Area



Jasmine/Block 1D
1st Floor Plan



2 Bedroom Hall Kitchen +Study + 2 Toilet (Flat C)

Jasmine/Block 1D Typical Floor Plan (2nd to 14th)



| Flat # | Flat Type | BUA | CA | BA |
|--------|-----------|-----|-----|----|
| A | 3BHK+2T | 972 | 845 | 55 |
| B | 2BHK+2T+S | 776 | 642 | 50 |
| C | 2BHK+2T+S | 776 | 642 | 50 |
| D | 3BHK+2T | 975 | 848 | 55 |
| E | 3BHK+2T | 924 | 795 | 55 |
| F | 2BHK+2T | 675 | 560 | 51 |
| G | 2BHK+2T | 675 | 563 | 48 |
| H | 3BHK+2T | 924 | 795 | 55 |

BHK = Bedroom, Hall, Kitchen T = Toilet S = Study
 BUA = Built-up Area, CA = Carpet Area, BA = Balcony Area

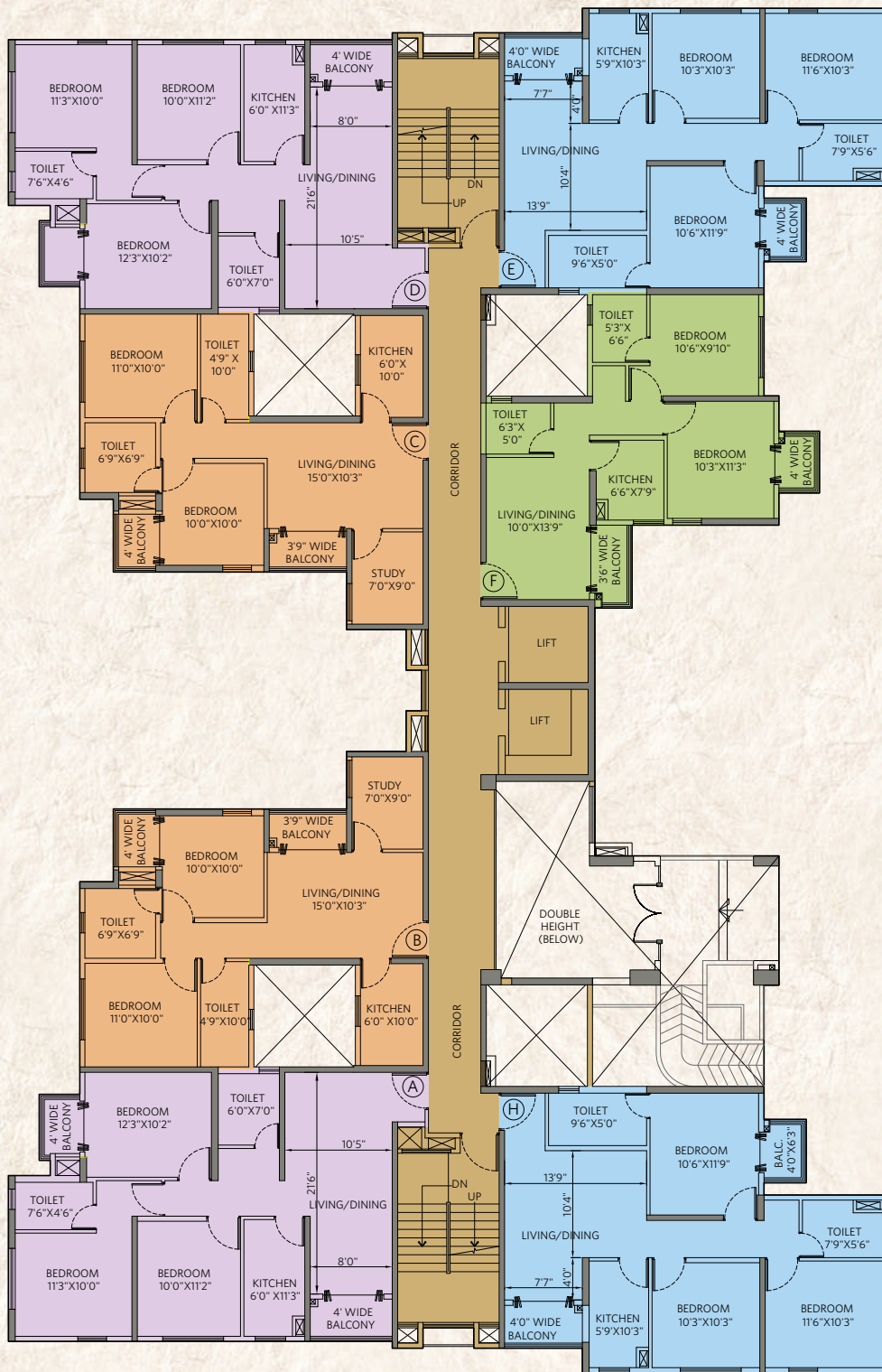


Jasmine/Block 1D
Typical Floor Plan (2nd to 14th)



3 Bedroom Hall Kitchen + 2 Toilet (Flat H)

Lavender/Block 2A 1st Floor Plan



| Flat # | Flat Type | BUA | CA | BA |
|--------|-----------|-----|-----|----|
| A | 3BHK+2T | 972 | 844 | 56 |
| B | 2BHK+2T+S | 776 | 642 | 51 |
| C | 2BHK+2T+S | 776 | 642 | 51 |
| D | 3BHK+2T | 975 | 847 | 56 |
| E | 3BHK+2T | 924 | 795 | 55 |
| F | 2BHK+2T | 675 | 564 | 51 |
| G | NA | NA | NA | NA |
| H | 3BHK+2T | 930 | 795 | 55 |

BHK = Bedroom, Hall, Kitchen T = Toilet S = Study
 BUA = Built-up Area, CA = Carpet Area, BA = Balcony Area

Key Plan



Lavender/Block 2A
1st Floor Plan



2 Bedroom Hall Kitchen +Study + 2 Toilet (Flat B)

Lavender/Block 2A Typical Floor Plan (2nd to 14th)



| Flat # | Flat Type | BUA | CA | BA |
|--------|-----------|-----|-----|----|
| A | 3BHK+2T | 972 | 844 | 56 |
| B | 2BHK+2T+S | 776 | 642 | 51 |
| C | 2BHK+2T+S | 776 | 642 | 51 |
| D | 3BHK+2T | 975 | 847 | 56 |
| E | 3BHK+2T | 924 | 795 | 55 |
| F | 2BHK+2T | 675 | 564 | 51 |
| G | 2BHK+2T | 675 | 568 | 48 |
| H | 3BHK+2T | 924 | 795 | 55 |

BHK = Bedroom, Hall, Kitchen T = Toilet S = Study
BUA = Built-up Area, CA = Carpet Area, BA = Balcony Area

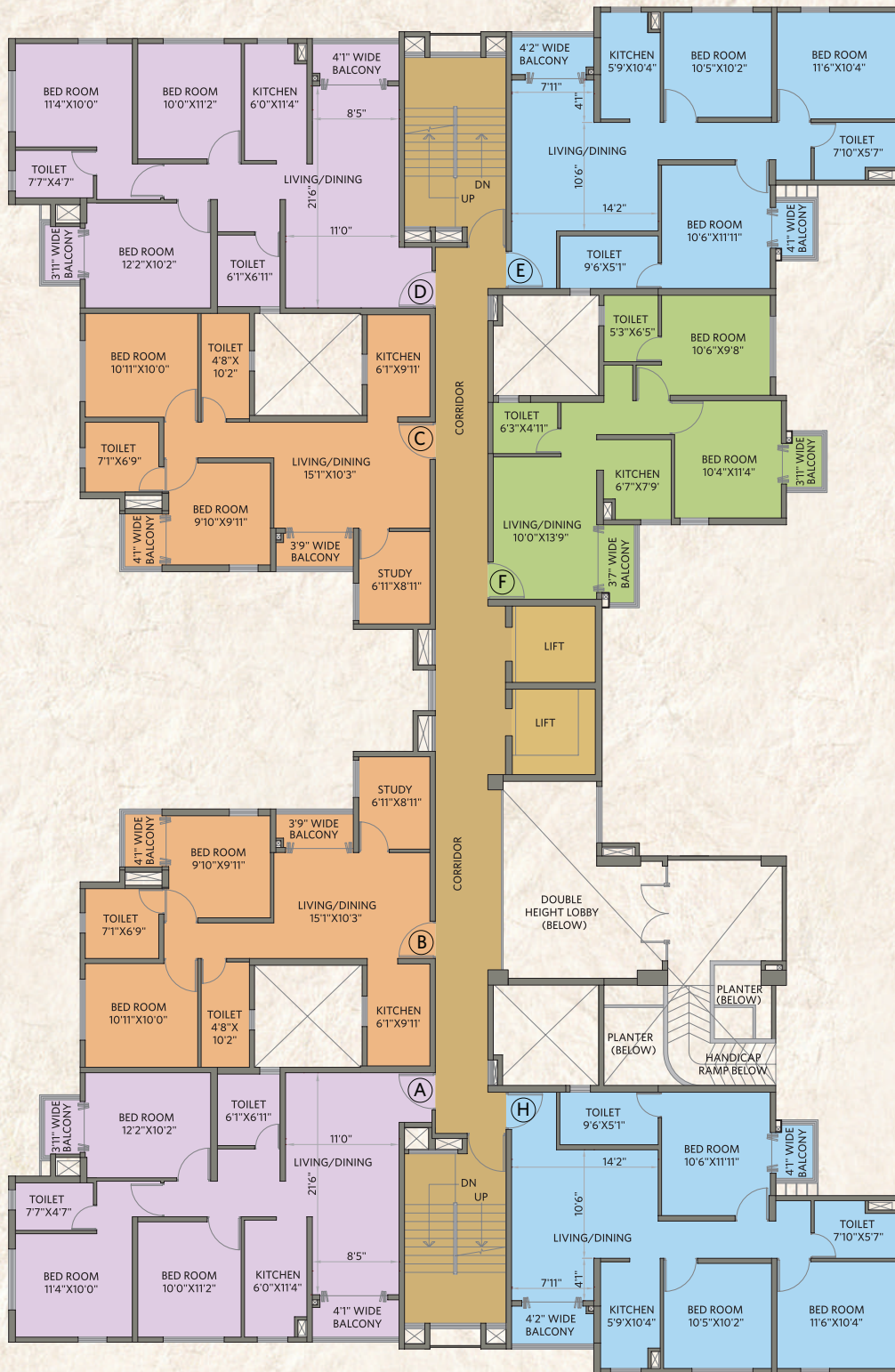


Lavender/Block 2A
Typical Floor Plan (2nd to 14th)



3 Bedroom Hall Kitchen + 2 Toilet (Flat E)

Marigold/Block 2B First Floor Plan



| Flat # | Flat Type | BUA | CA | BA |
|--------|-----------|-----|-----|----|
| A | 3BHK+2T | 987 | 856 | 58 |
| B | 2BHK+2T+S | 780 | 646 | 51 |
| C | 2BHK+2T+S | 780 | 646 | 51 |
| D | 3BHK+2T | 991 | 860 | 58 |
| E | 3BHK+2T | 938 | 807 | 57 |
| F | 2BHK+2T | 673 | 560 | 51 |
| G | NA | NA | NA | NA |
| H | 3BHK+2T | 944 | 807 | 57 |

BHK = Bedroom, Hall, Kitchen T = Toilet S = Study
 BUA = Built-up Area, CA = Carpet Area, BA = Balcony Area

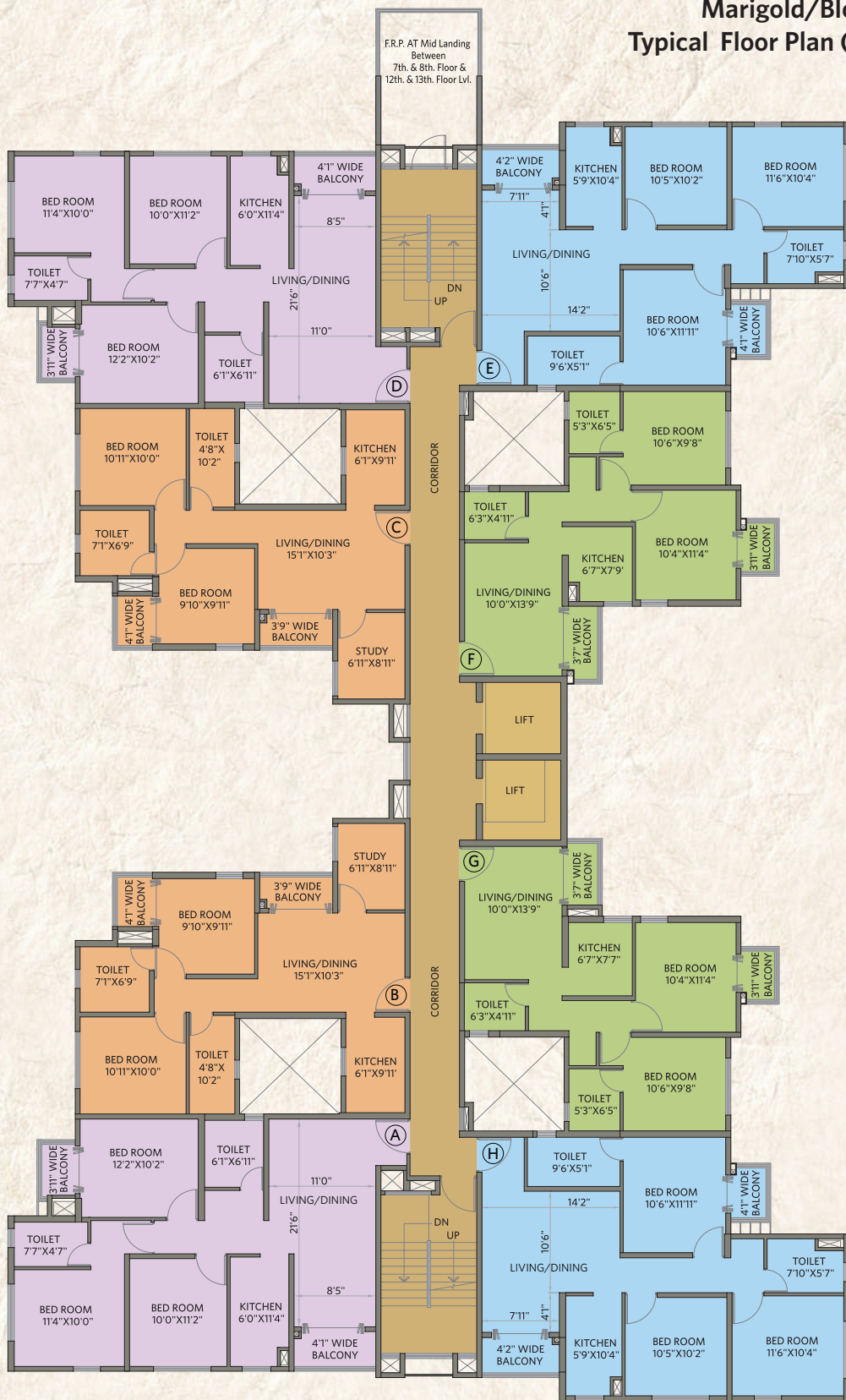


**Marigold/Block 2B
First Floor Plan**



2 Bedroom Hall Kitchen +Study + 2 Toilet (Flat B)

Marigold/Block 2B Typical Floor Plan (2nd to 14th)



| Flat # | Flat Type | BUA | CA | BA |
|--------|-----------|-----|-----|----|
| A | 3BHK+2T | 987 | 856 | 58 |
| B | 2BHK+2T+S | 780 | 646 | 51 |
| C | 2BHK+2T+S | 780 | 646 | 51 |
| D | 3BHK+2T | 991 | 860 | 58 |
| E | 3BHK+2T | 938 | 807 | 57 |
| F | 2BHK+2T | 673 | 560 | 51 |
| G | 2BHK+2T | 673 | 564 | 48 |
| H | 3BHK+2T | 938 | 807 | 57 |

BHK = Bedroom, Hall, Kitchen T = Toilet S = Study
 BUA = Built-up Area, CA = Carpet Area, BA = Balcony Area



Marigold/Block 2B
Typical Floor Plan (2nd to 14th)



3 Bedroom Hall Kitchen + 2 Toilet (Flat H)

Iris/Block 2D First Floor Plan



| Flat # | Flat Type | BUA | CA | BA |
|--------|-----------|-----|-----|----|
| A | 3BHK+2T | 987 | 856 | 58 |
| B | 2BHK+2T+S | 780 | 646 | 51 |
| C | 2BHK+2T+S | 780 | 646 | 51 |
| D | 3BHK+2T | 991 | 860 | 58 |
| E | 3BHK+2T | 938 | 807 | 57 |
| F | 2BHK+2T | 673 | 560 | 51 |
| G | NA | NA | NA | NA |
| H | 3BHK+2T | 944 | 807 | 57 |

BHK = Bedroom, Hall, Kitchen T = Toilet S = Study
 BUA = Built-up Area, CA = Carpet Area, BA = Balcony Area

Key Plan

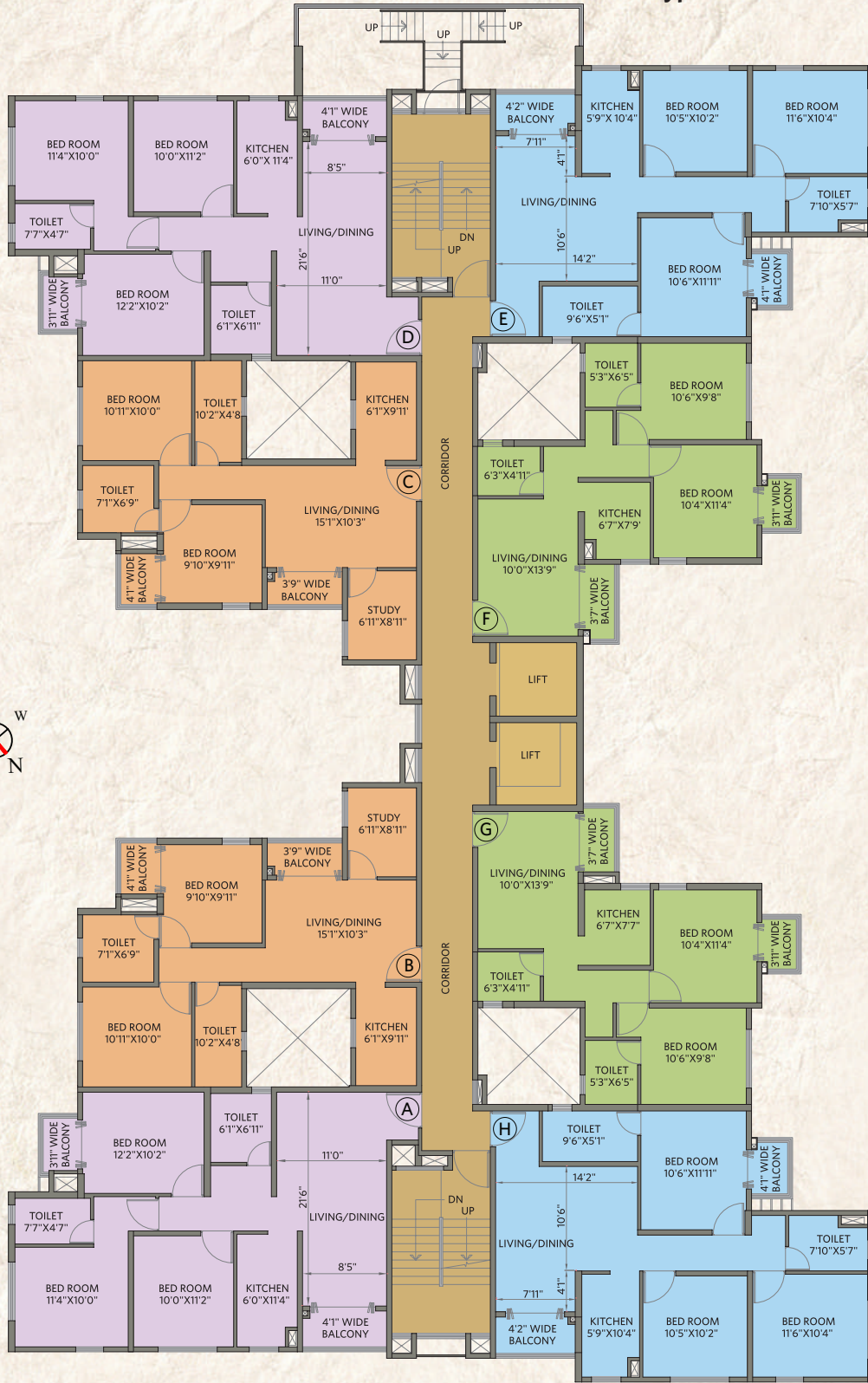


Iris/Block 2D
First Floor Plan



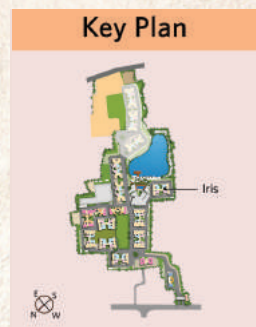
2 Bedroom Hall Kitchen +Study + 2 Toilet (Flat C)

Iris/Block 2D Typical Floor Plan (2nd to 14th)



| Flat # | Flat Type | BUA | CA | BA |
|--------|-----------|-----|-----|----|
| A | 3BHK+2T | 987 | 856 | 58 |
| B | 2BHK+2T+S | 780 | 646 | 51 |
| C | 2BHK+2T+S | 780 | 646 | 51 |
| D | 3BHK+2T | 991 | 860 | 58 |
| E | 3BHK+2T | 938 | 807 | 57 |
| F | 2BHK+2T | 673 | 560 | 51 |
| G | 2BHK+2T | 673 | 564 | 48 |
| H | 3BHK+2T | 938 | 807 | 57 |

BHK = Bedroom, Hall, Kitchen T = Toilet S = Study
 BUA = Built-up Area, CA = Carpet Area, BA = Balcony Area



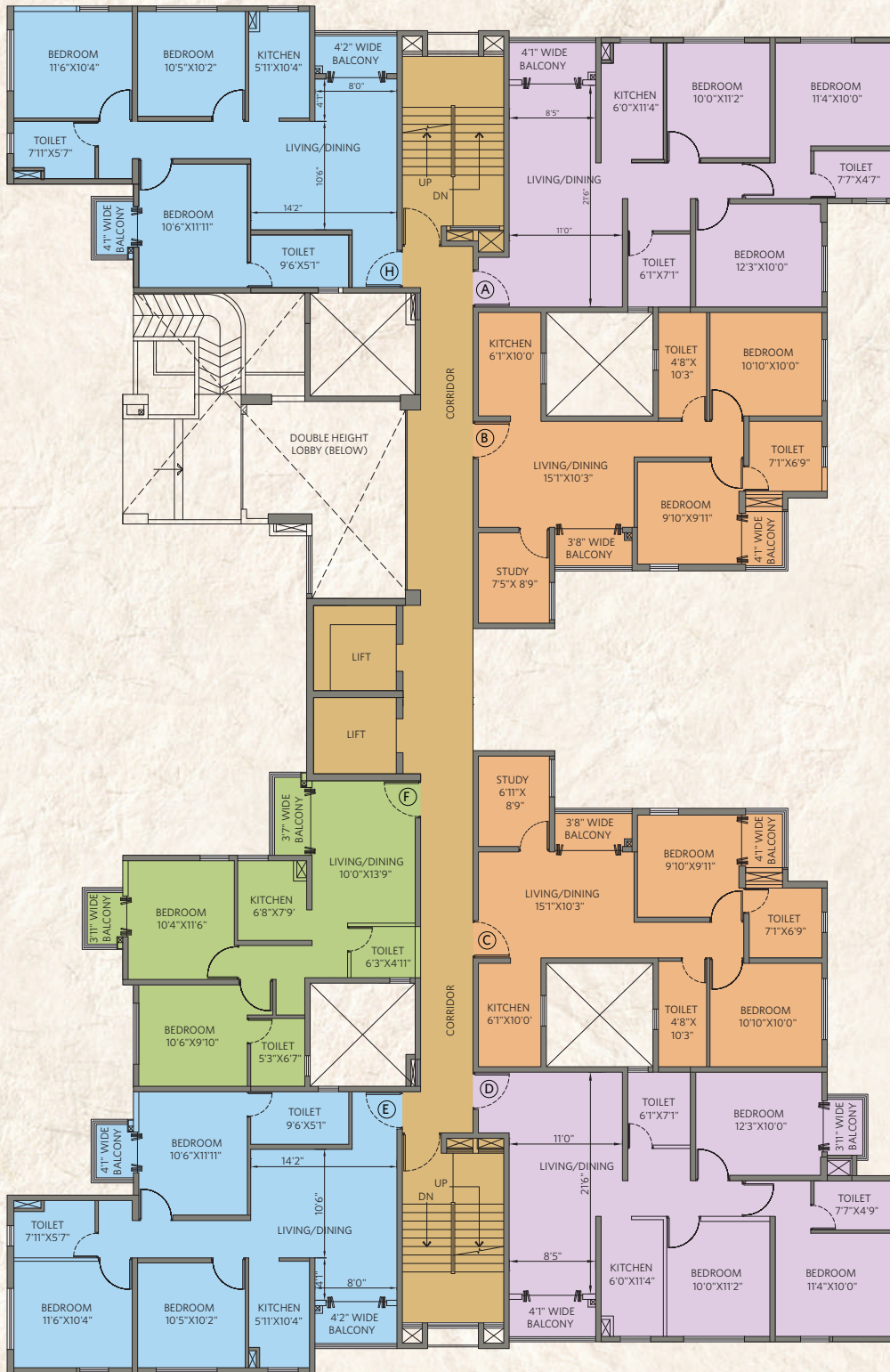
Iris/Block 2D
Typical Floor Plan (2nd to 14th)



3 Bedroom Hall Kitchen + 2 Toilet (Flat A)

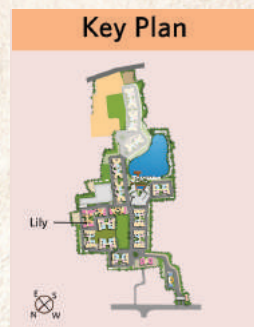
Lily/Block 1G First Floor Plan

PROPOSED FUTURE BLOCK



| Flat # | Flat Type | BUA | CA | BA |
|--------|-----------|-----|-----|----|
| A | 3BHK+2T | 963 | 858 | 34 |
| B | 2BHK+2T+S | 779 | 646 | 51 |
| C | 2BHK+2T+S | 779 | 646 | 51 |
| D | 3BHK+2T | 990 | 860 | 58 |
| E | 3BHK+2T | 936 | 807 | 57 |
| F | 2BHK+2T | 673 | 560 | 51 |
| G | NA | NA | NA | NA |
| H | 3BHK+2T | 941 | 807 | 57 |

BHK = Bedroom, Hall, Kitchen T = Toilet S = Study
 BUA = Built-up Area, CA = Carpet Area, BA = Balcony Area



Lily/Block 1G
First Floor Plan
PROPOSED FUTURE BLOCK



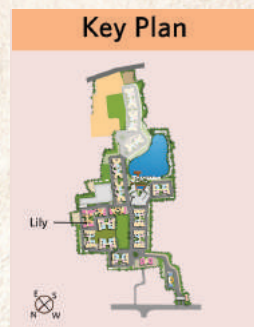
2 Bedroom Hall Kitchen +Study + 2 Toilet (Flat C)

Lily/Block 1G
Typical Floor Plan (2nd to 14th)
 PROPOSED FUTURE BLOCK



| Flat # | Flat Type | BUA | CA | BA |
|--------|-----------|-----|-----|----|
| A | 3BHK+2T | 963 | 858 | 34 |
| B | 2BHK+2T+S | 779 | 646 | 51 |
| C | 2BHK+2T+S | 779 | 646 | 51 |
| D | 3BHK+2T | 990 | 860 | 58 |
| E | 3BHK+2T | 936 | 807 | 57 |
| F | 2BHK+2T | 673 | 560 | 51 |
| G | 2BHK+2T | 673 | 564 | 48 |
| H | 3BHK+2T | 936 | 807 | 57 |

BHK = Bedroom, Hall, Kitchen T = Toilet S = Study
 BUA = Built-up Area, CA = Carpet Area, BA = Balcony Area

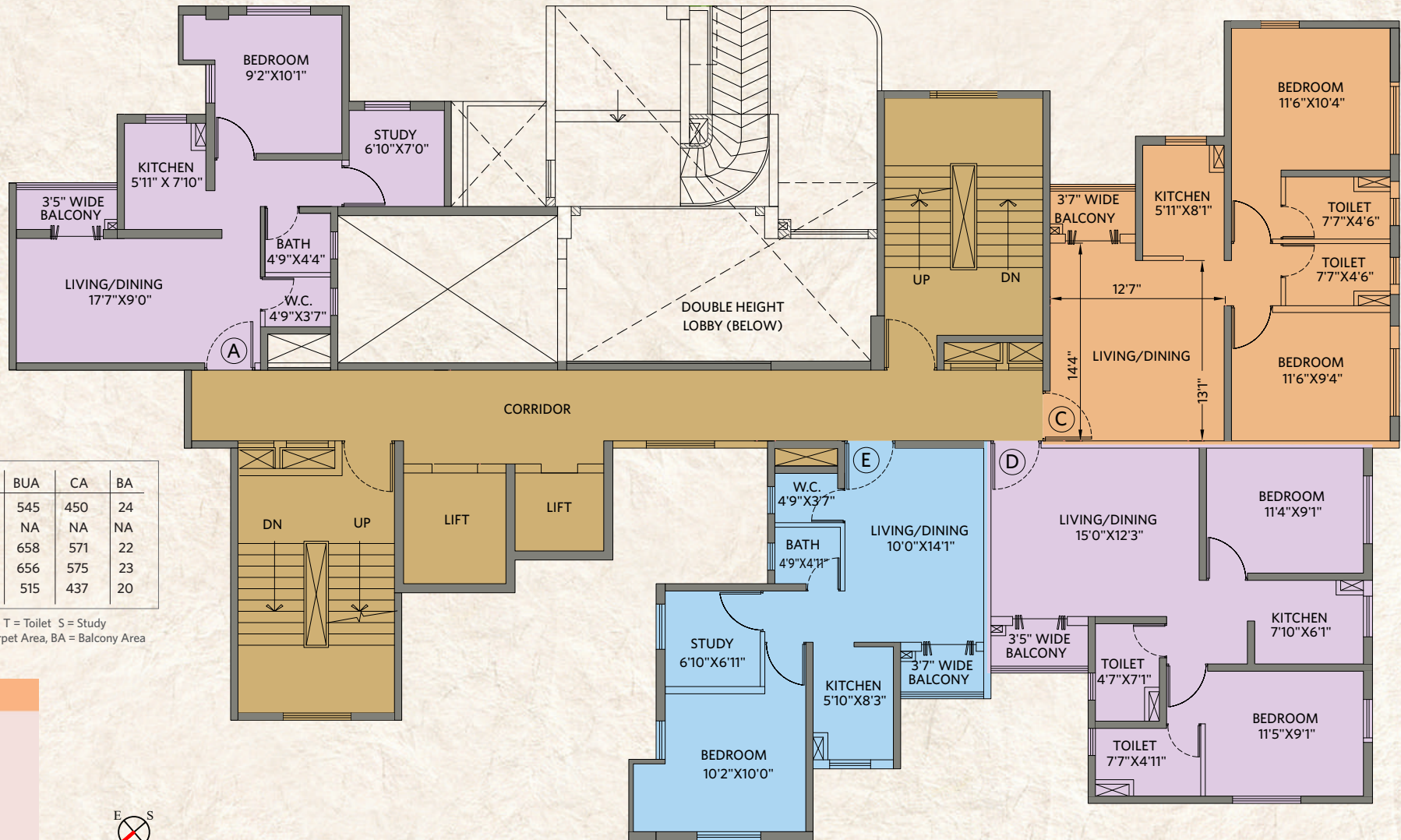


Lily/Block 1G
Typical Floor Plan (2nd to 14th)
PROPOSED FUTURE BLOCK



3 Bedroom Hall Kitchen + 2 Toilet (Flat A)

Tulip/Block 1F
First Floor Plan
 PROPOSED FUTURE BLOCK



| Flat # | Flat Type | BUA | CA | BA |
|--------|-----------|-----|-----|----|
| A | 1BHK+2T+S | 545 | 450 | 24 |
| B | NA | NA | NA | NA |
| C | 2BHK+2T | 658 | 571 | 22 |
| D | 2BHK+2T | 656 | 575 | 23 |
| E | 1BHK+2T+S | 515 | 437 | 20 |

BHK = Bedroom, Hall, Kitchen T = Toilet S = Study
 BUA = Built-up Area, CA = Carpet Area, BA = Balcony Area



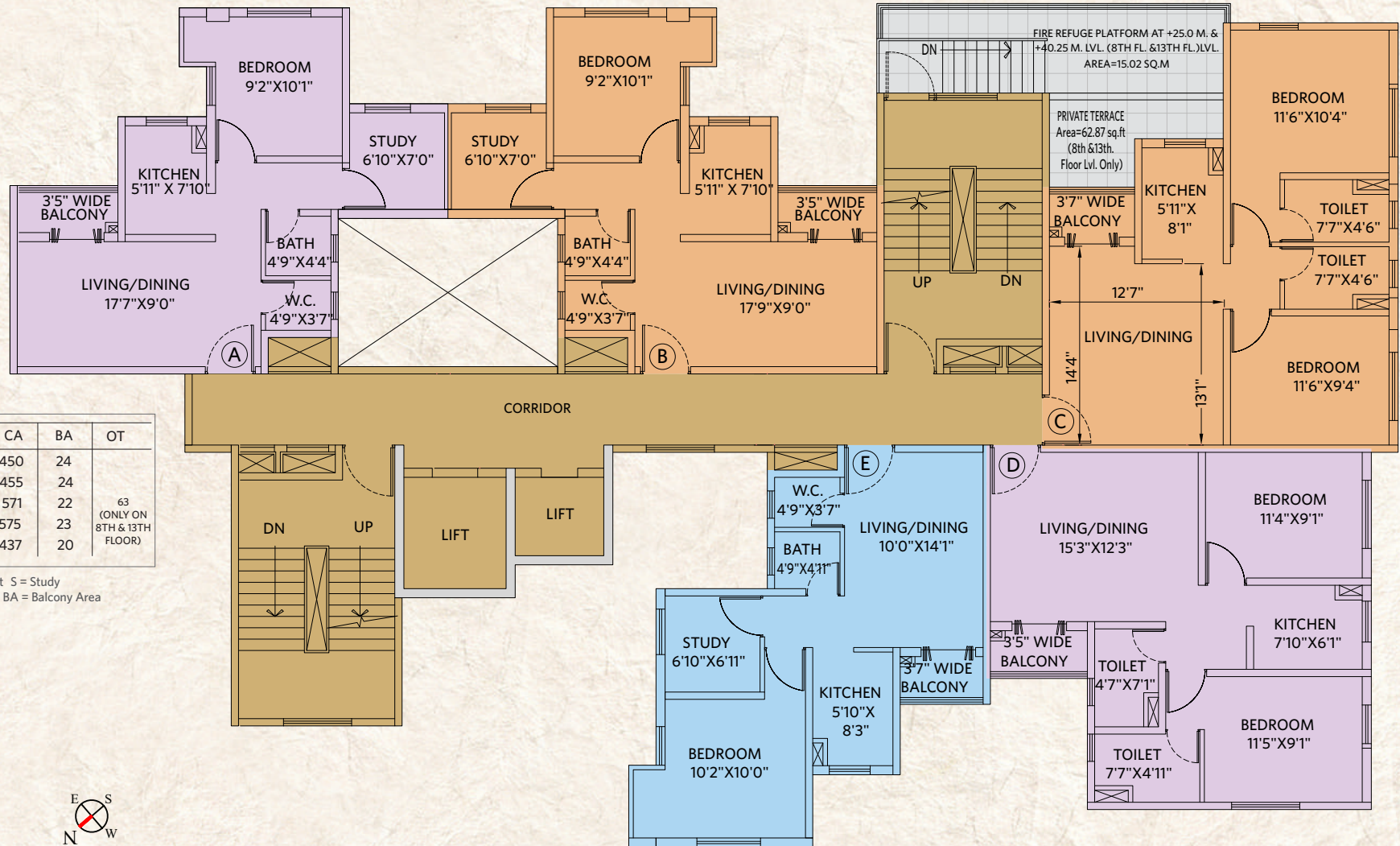
Tulip/Block 1F
First Floor Plan
PROPOSED FUTURE BLOCK



1 Bedroom Hall Kitchen + Study +2 Toilet (Flat E)

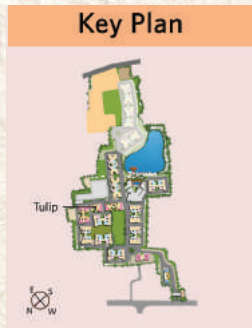
Tulip/Block 1F Typical Floor Plan(2nd to 14th)

PROPOSED FUTURE BLOCK



| Flat # | Flat Type | BUA | CA | BA | OT |
|--------|-----------|-----|-----|----|--|
| A | 1BHK+2T+S | 543 | 450 | 24 | |
| B | 1BHK+2T+S | 541 | 455 | 24 | |
| C | 2BHK+2T | 658 | 571 | 22 | |
| 4 | 2BHK+2T | 656 | 575 | 23 | |
| 5 | 1BHK+2T+S | 515 | 437 | 20 | 63 (ONLY ON 8TH & 13TH FLOOR) |

BHK = Bedroom, Hall, Kitchen T = Toilet S = Study
BUA = Built-up Area, CA = Carpet Area, BA = Balcony Area

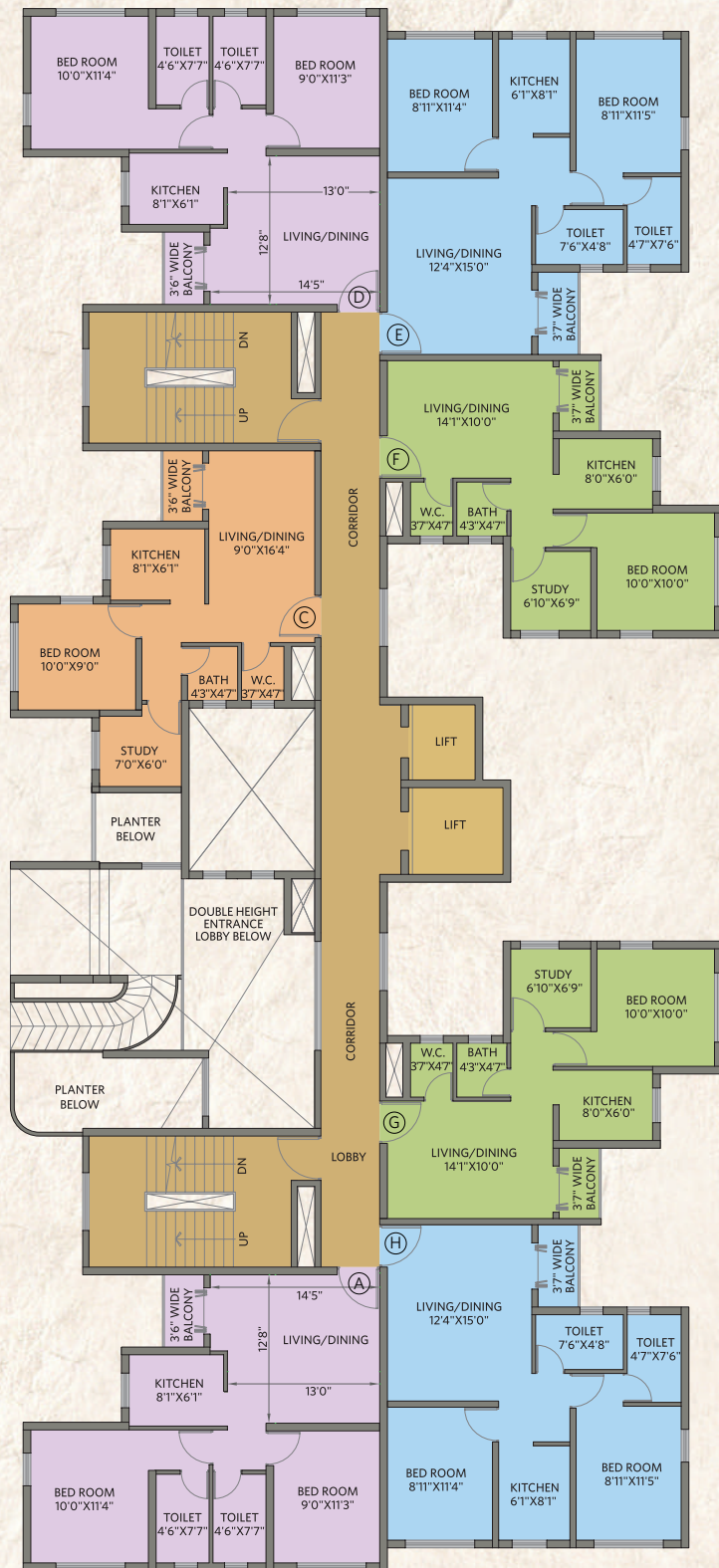


Tulip/Block 1F
First Floor Plan
PROPOSED FUTURE BLOCK



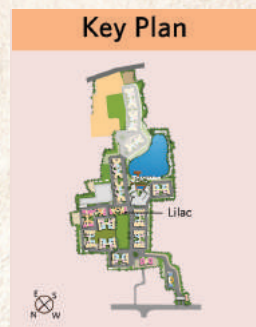
2 Bedroom Hall Kitchen +2 Toilet (Flat C)

Lilac/Block 1E First Floor Plan



| Flat # | Flat Type | BUA | CA | BA |
|--------|-----------|-----|-----|----|
| A | 2BHK+2T | 658 | 571 | 22 |
| B | NA | NA | NA | NA |
| C | 1BHK+2T+S | 519 | 432 | 20 |
| D | 2BHK+2T | 658 | 571 | 22 |
| E | 2BHK+2T | 656 | 575 | 23 |
| F | 1BHK+2T+S | 515 | 436 | 20 |
| G | 1BHK+2T+S | 515 | 436 | 20 |
| H | 2BHK+2T | 656 | 575 | 23 |

BHK = Bedroom, Hall, Kitchen T = Toilet S = Study
 BUA = Built-up Area, CA = Carpet Area, BA = Balcony Area

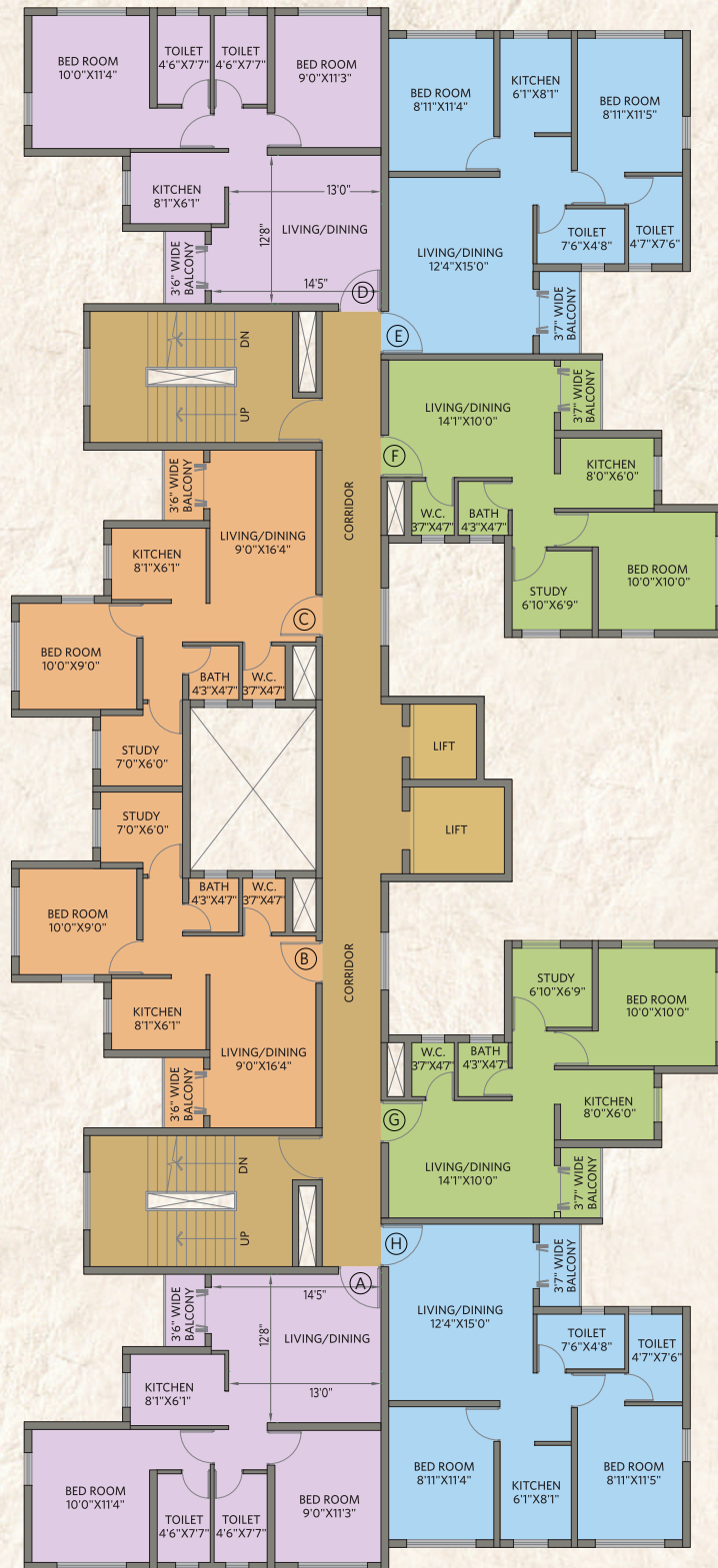


Lilac/Block 1E
First Floor Plan



2 Bedroom Hall Kitchen + 2 Toilet (Flat D)

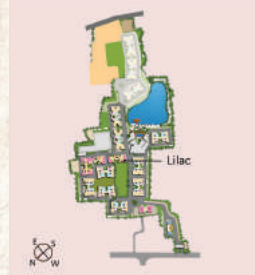
Lilac/Block 1E Typical Floor Plan (2nd to 14th)



| Flat # | Flat Type | BUA | CA | BA |
|--------|-----------|-----|-----|----|
| A | 2BHK+2T | 658 | 571 | 22 |
| B | 1BHK+2T+S | 517 | 432 | 20 |
| C | 1BHK+2T+S | 517 | 432 | 20 |
| D | 2BHK+2T | 658 | 571 | 22 |
| E | 2BHK+2T | 656 | 575 | 23 |
| F | 1BHK+2T+S | 515 | 436 | 20 |
| G | 1BHK+2T+S | 515 | 436 | 20 |
| H | 2BHK+2T | 656 | 575 | 23 |

BHK = Bedroom, Hall, Kitchen T = Toilet S = Study
BUA = Built-up Area, CA = Carpet Area, BA = Balcony Area

Key Plan

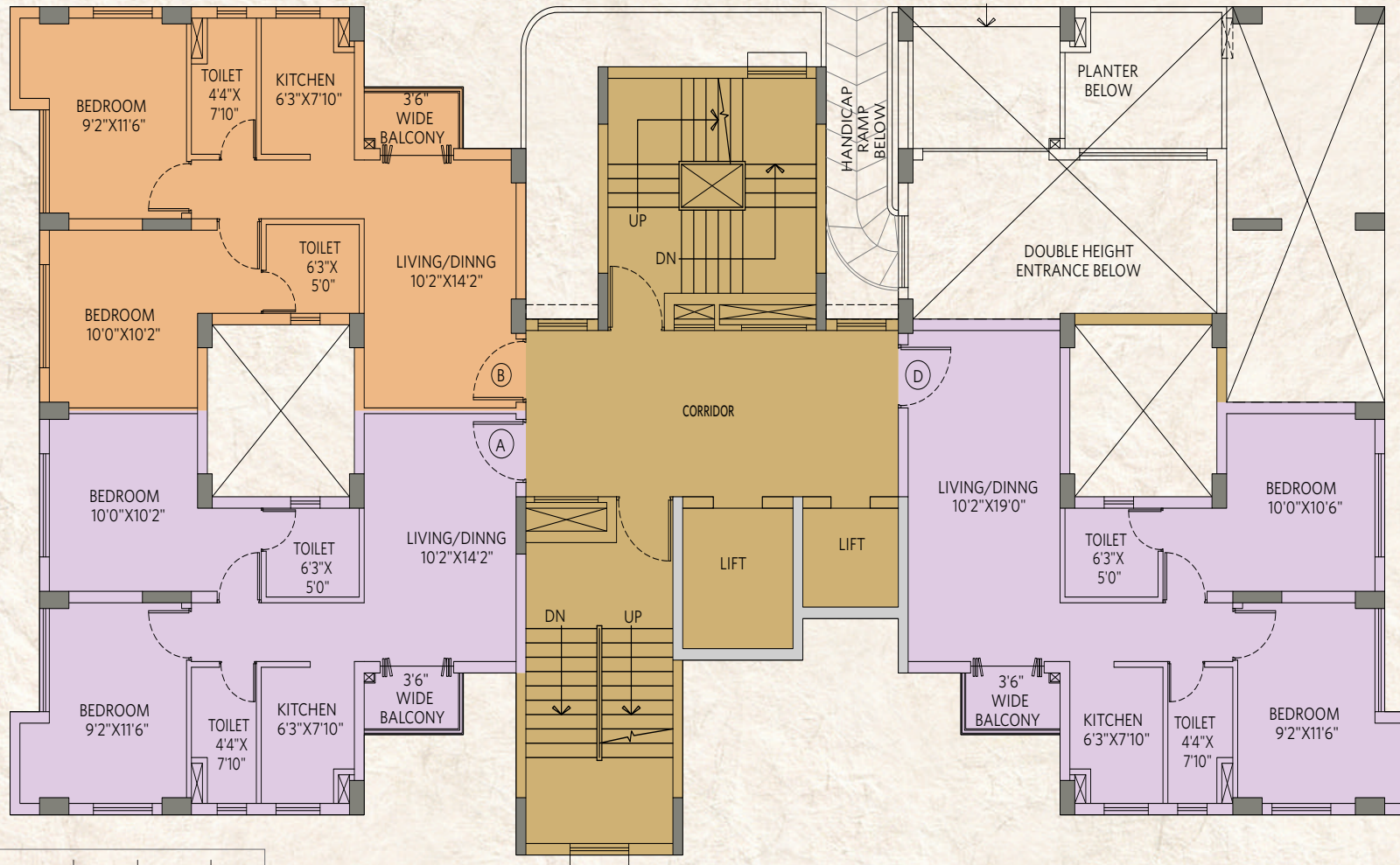


Lilac/Block 1E
Typical Floor Plan (2nd to 14th)



1 Bedroom Hall Kitchen + Study + 2 Toilet (Flat B)

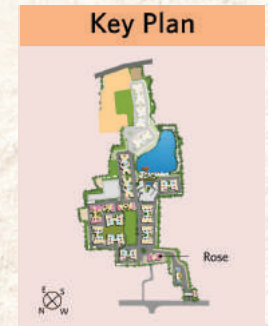
Rose/5(19) First Floor Plan



| Flat # | Flat Type | BUA | CA | BA |
|--------|-----------|-----|-----|----|
| A | 2BHK+2T | 652 | 555 | 23 |
| B | 2BHK+2T | 652 | 555 | 23 |
| C | 2BHK+2T | NA | NA | NA |
| D | 2BHK+2T | 718 | 603 | 23 |



BHK = Bedroom, Hall, Kitchen T = Toilet S = Study
 BUA = Built-up Area, CA = Carpet Area, BA = Balcony Area

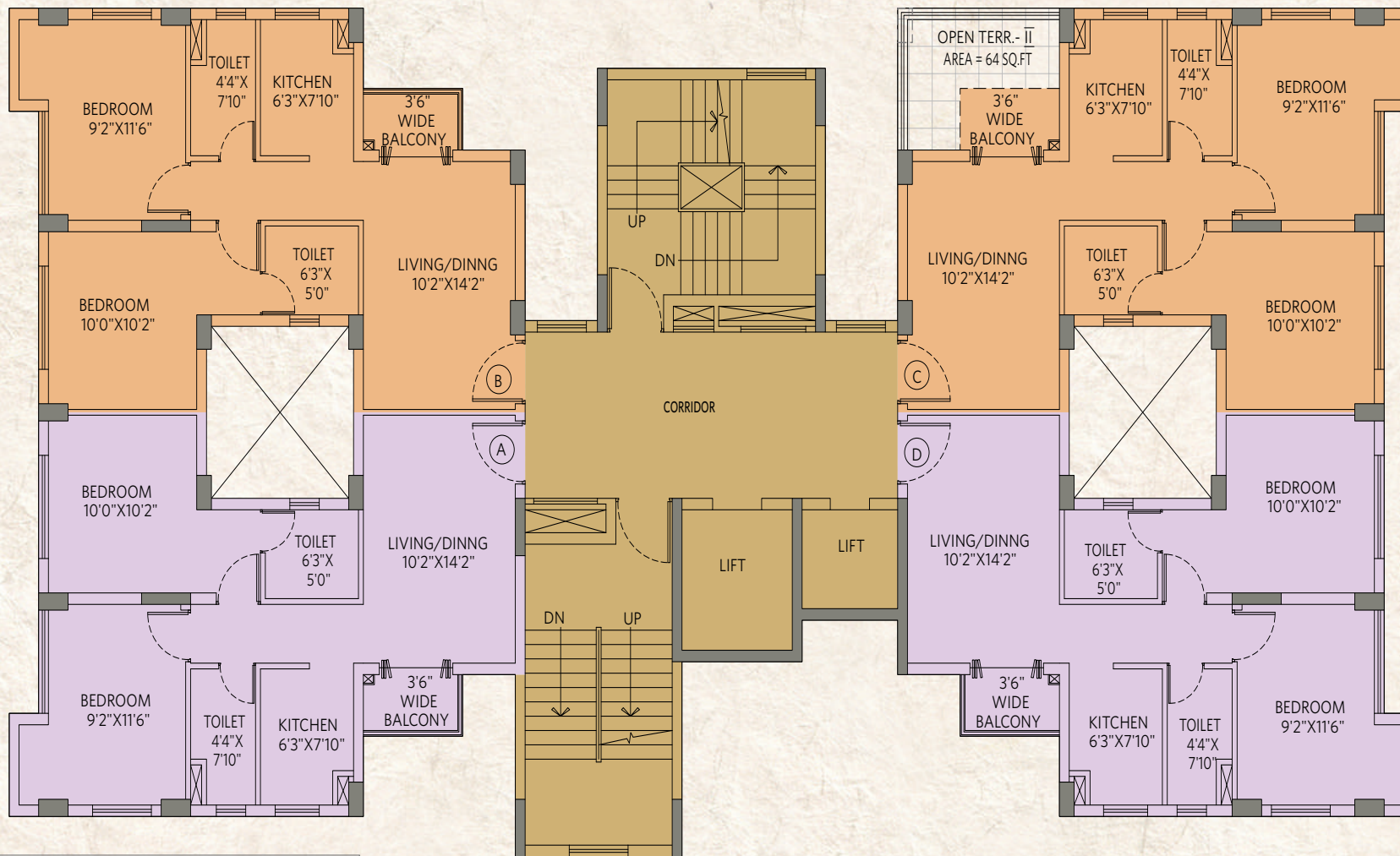


Rose/5(19)
First Floor Plan



2 Bedroom Hall Kitchen +2 Toilet (Flat B)

Rose/5(19) Second Floor Plan

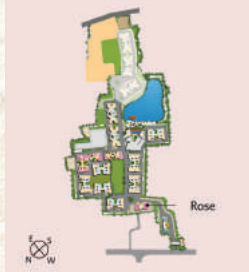


| Flat # | Flat Type | BUA | CA | BA | OT |
|--------|-----------|-----|-----|----|---------------------------|
| A | 2BHK+2T | 652 | 555 | 23 | |
| B | 2BHK+2T | 652 | 555 | 23 | |
| C | 2BHK+2T | 652 | 555 | 23 | 64 |
| D | 2BHK+2T | 652 | 555 | 23 | (Only at 2nd floor level) |



BHK = Bedroom, Hall, Kitchen T = Toilet S = Study
 BUA = Built-up Area, CA = Carpet Area, BA = Balcony Area

Key Plan

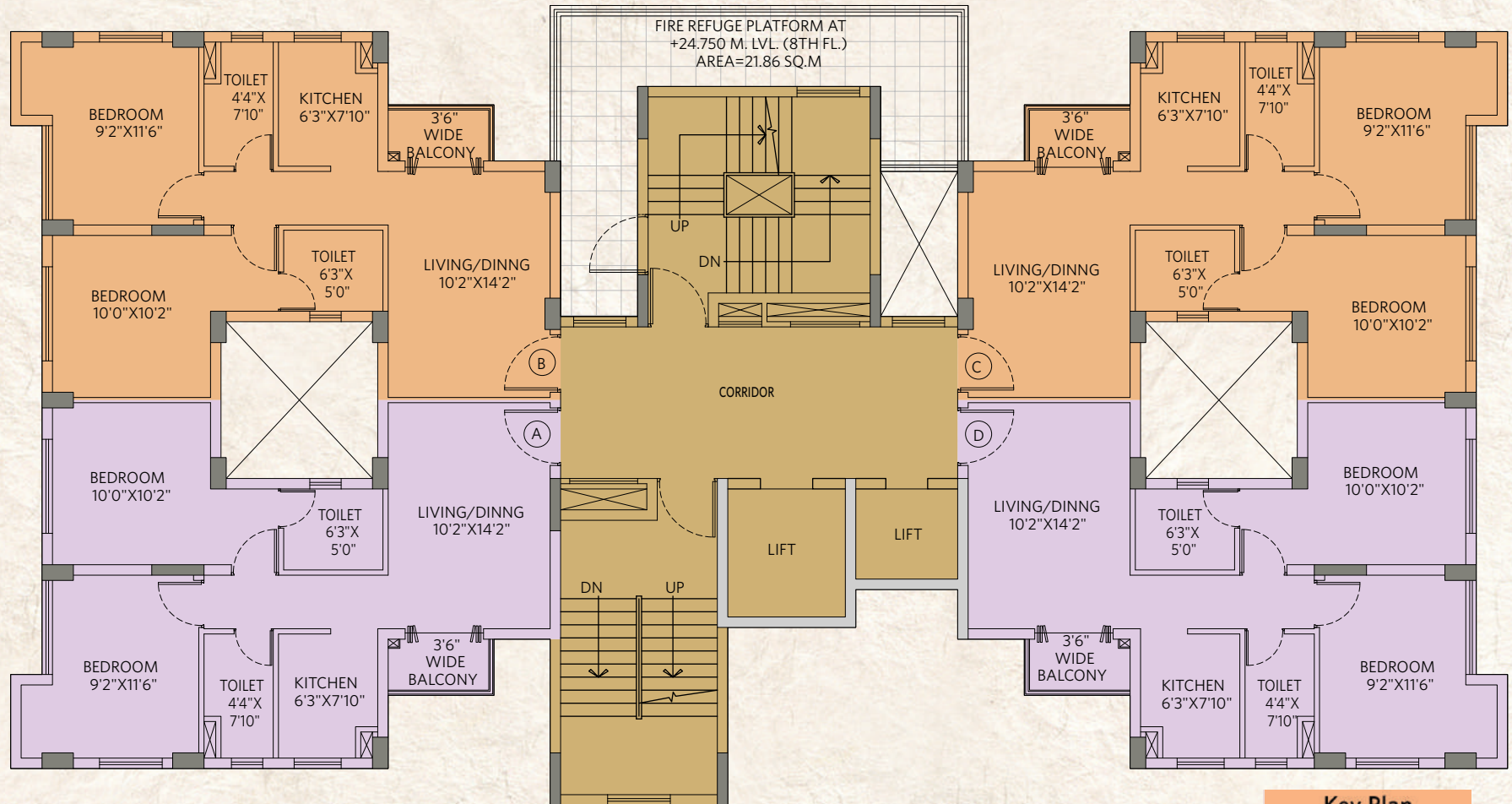


Rose/5(19)
Second Floor Plan



2 Bedroom Hall Kitchen +2 Toilet (Flat D)

Rose/5(19) Typical Floor Plan

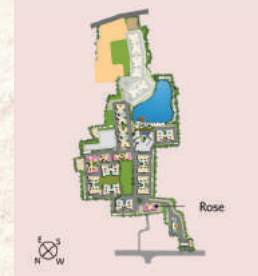


| Flat # | Flat Type | BUA | CA | BA | OT |
|--------|-----------|-----|-----|----|---------------------------|
| A | 2BHK+2T | 652 | 555 | 23 | |
| B | 2BHK+2T | 652 | 555 | 23 | |
| C | 2BHK+2T | 652 | 555 | 23 | 64 |
| D | 2BHK+2T | 652 | 555 | 23 | (Only at 2nd floor level) |



BHK = Bedroom, Hall, Kitchen T = Toilet S = Study
BUA = Built-up Area, CA = Carpet Area, BA = Balcony Area

Key Plan

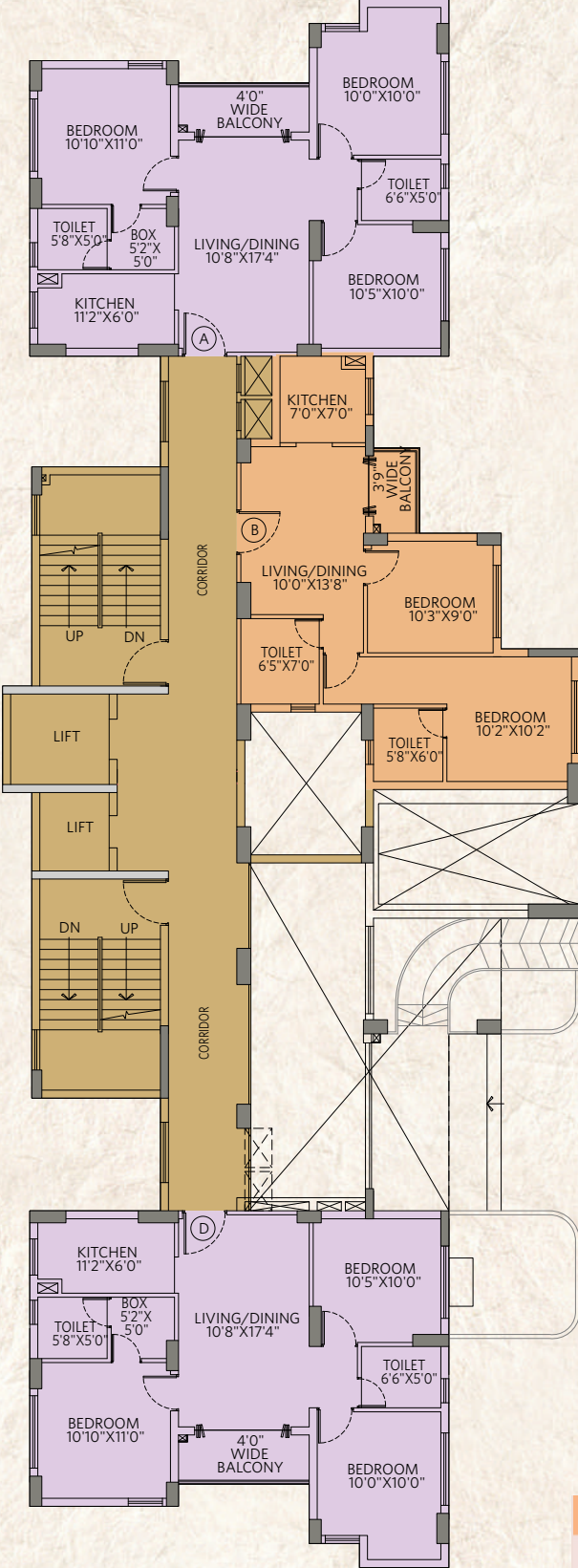


Rose/5(19)
Typical Floor Plan



2 Bedroom Hall Kitchen +2 Toilet (Flat D)

Sunflower /6(20) First Floor Plan



| Flat # | Flat Type | BUA | CA | BA |
|--------|-----------|-----|-----|----|
| A | 3BHK+2T | 852 | 724 | 43 |
| B | 2BHK+2T | 628 | 529 | 26 |
| C | 2BHK+2T | NA | NA | NA |
| D | 3BHK+2T | 855 | 724 | 43 |

BHK = Bedroom, Hall, Kitchen T = Toilet S = Study
 BUA = Built-up Area, CA = Carpet Area, BA = Balcony Area

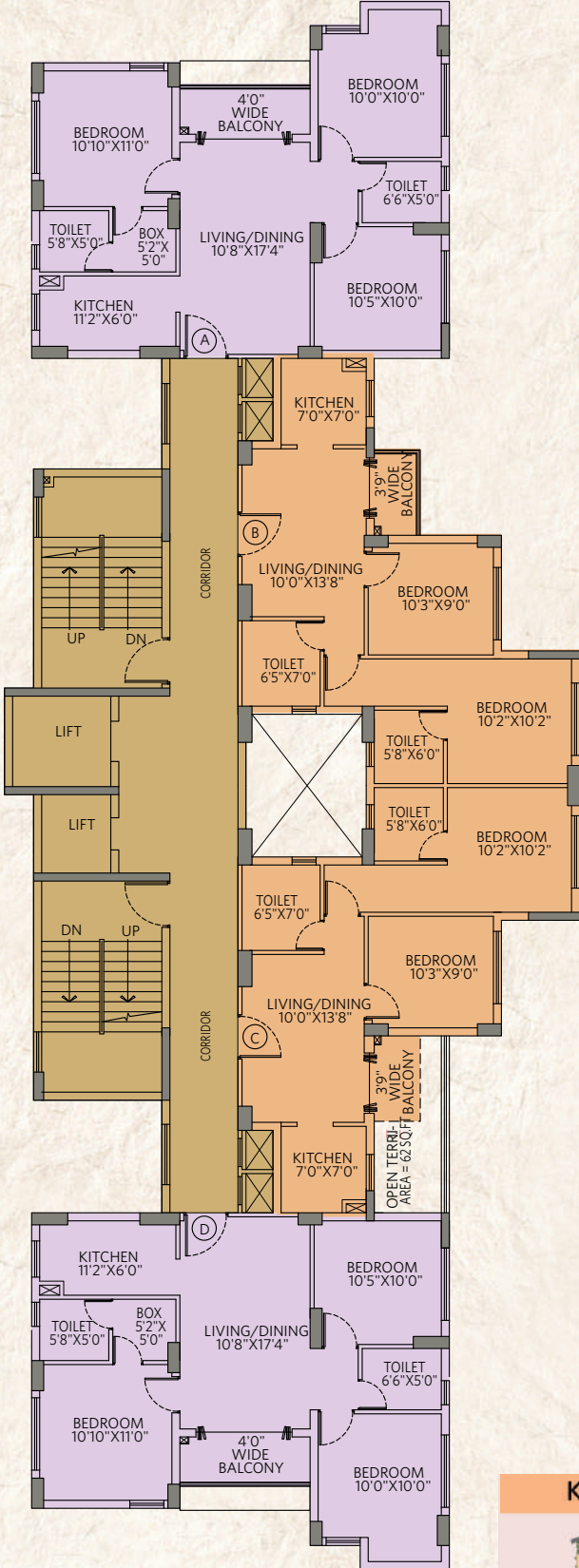


Sunflower /6(20)
First Floor Plan



3 Bedroom Hall Kitchen + 2 Toilet (Flat D)

Sunflower /6(20) Second Floor Plan



| Flat # | Flat Type | BUA | CA | BA | OT |
|--------|-----------|-----|-----|----|---------------------------|
| A | 3BHK+2T | 852 | 724 | 43 | |
| B | 2BHK+2T | 620 | 529 | 26 | |
| C | 2BHK+2T | 620 | 528 | 26 | 63 |
| 4 | 3BHK+2T | 852 | 724 | 43 | (Only at 2nd floor level) |

BHK = Bedroom, Hall, Kitchen T = Toilet S = Study
 BUA = Built-up Area, CA = Carpet Area, BA = Balcony Area

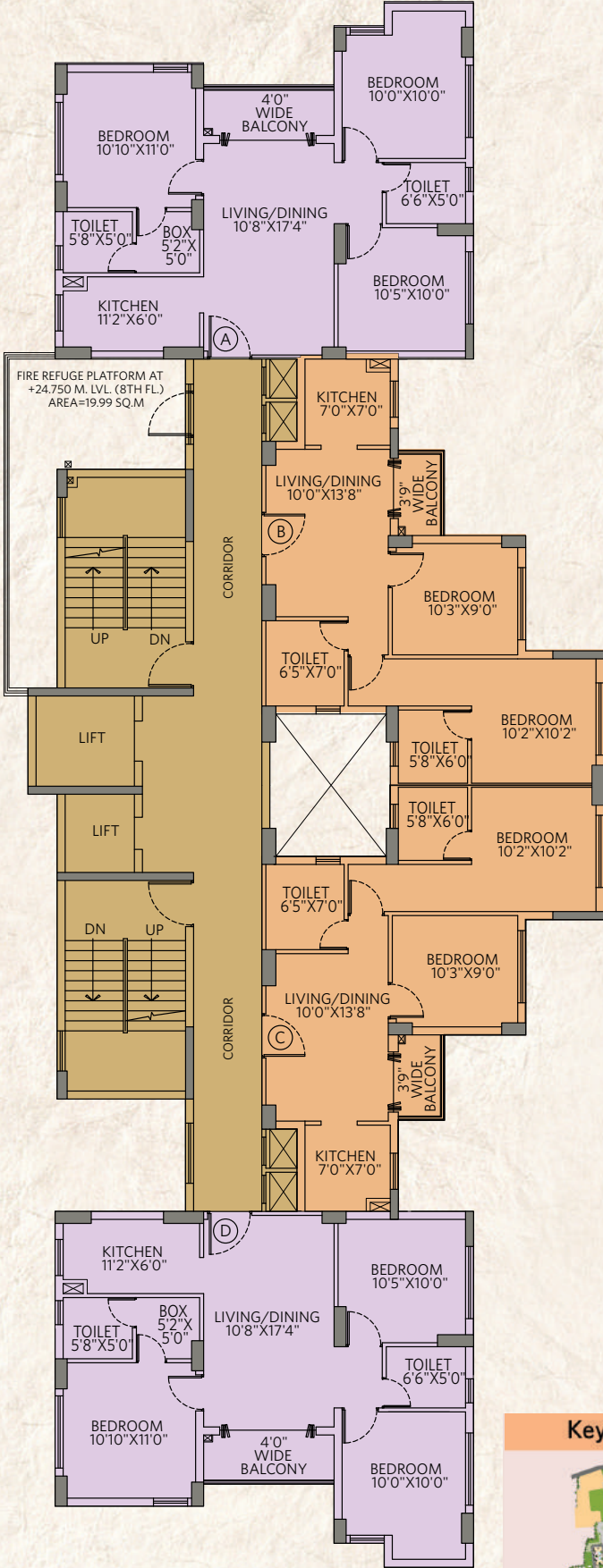


**Sunflower /6(20)
Second Floor Plan**



2 Bedroom Hall Kitchen + 2 Toilet (Flat B)

Sunflower /6(20) Second Floor Plan



| Flat # | Flat Type | BUA | CA | BA | OT |
|--------|-----------|-----|-----|----|---------------------------|
| A | 3BHK+2T | 852 | 724 | 43 | |
| B | 2BHK+2T | 620 | 529 | 26 | |
| C | 2BHK+2T | 620 | 528 | 26 | 63 |
| 4 | 3BHK+2T | 852 | 724 | 43 | (Only at 2nd floor level) |

BHK = Bedroom, Hall, Kitchen T = Toilet S = Study
 BUA = Built-up Area, CA = Carpet Area, BA = Balcony Area

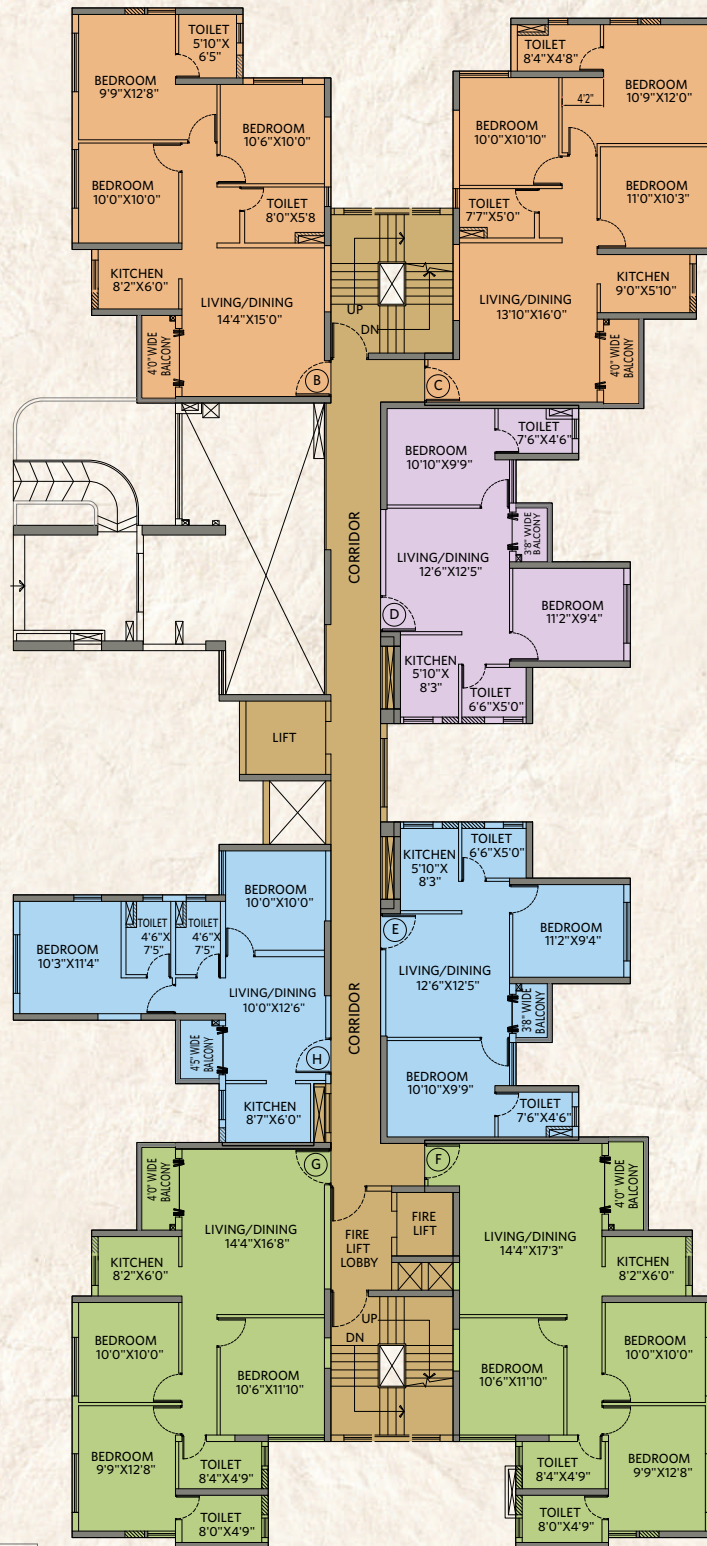


**Sunflower /6(20)
Second Floor Plan**



2 Bedroom Hall Kitchen + 2 Toilet (Flat B)

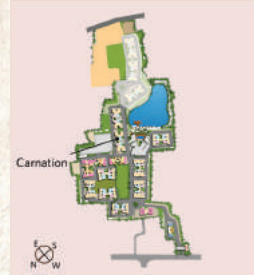
Carnation /3B(11) First Floor Plan



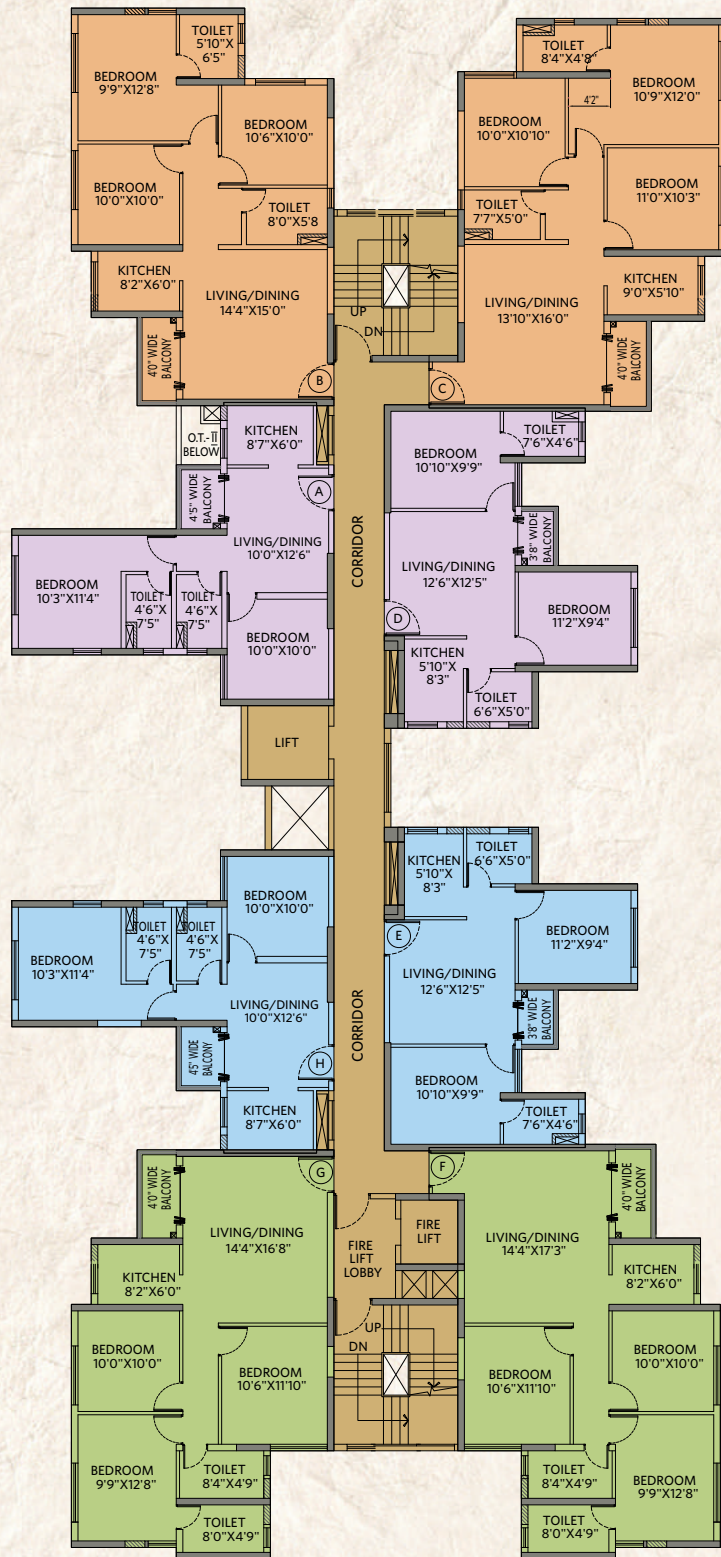
| Flat # | Flat Type | BUA | CA | BA |
|--------|-----------|-----|-----|----|
| A | NA | NA | NA | NA |
| B | 3BHK+2T | 905 | 784 | 34 |
| C | 3BHK+2T | 946 | 823 | 36 |
| D | 2BHK+2T | 616 | 517 | 21 |
| E | 2BHK+2T | 616 | 517 | 21 |
| F | 3BHK+2T | 940 | 818 | 37 |
| G | 3BHK+2T | 914 | 797 | 34 |
| H | 2BHK+2T | 621 | 517 | 28 |

BHK = Bedroom, Hall, Kitchen T = Toilet S = Study
 BUA = Built-up Area, CA = Carpet Area, BA = Balcony Area

Key Plan

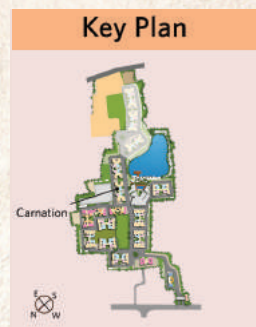


Carnation /3B(11) Typical Floor Plan

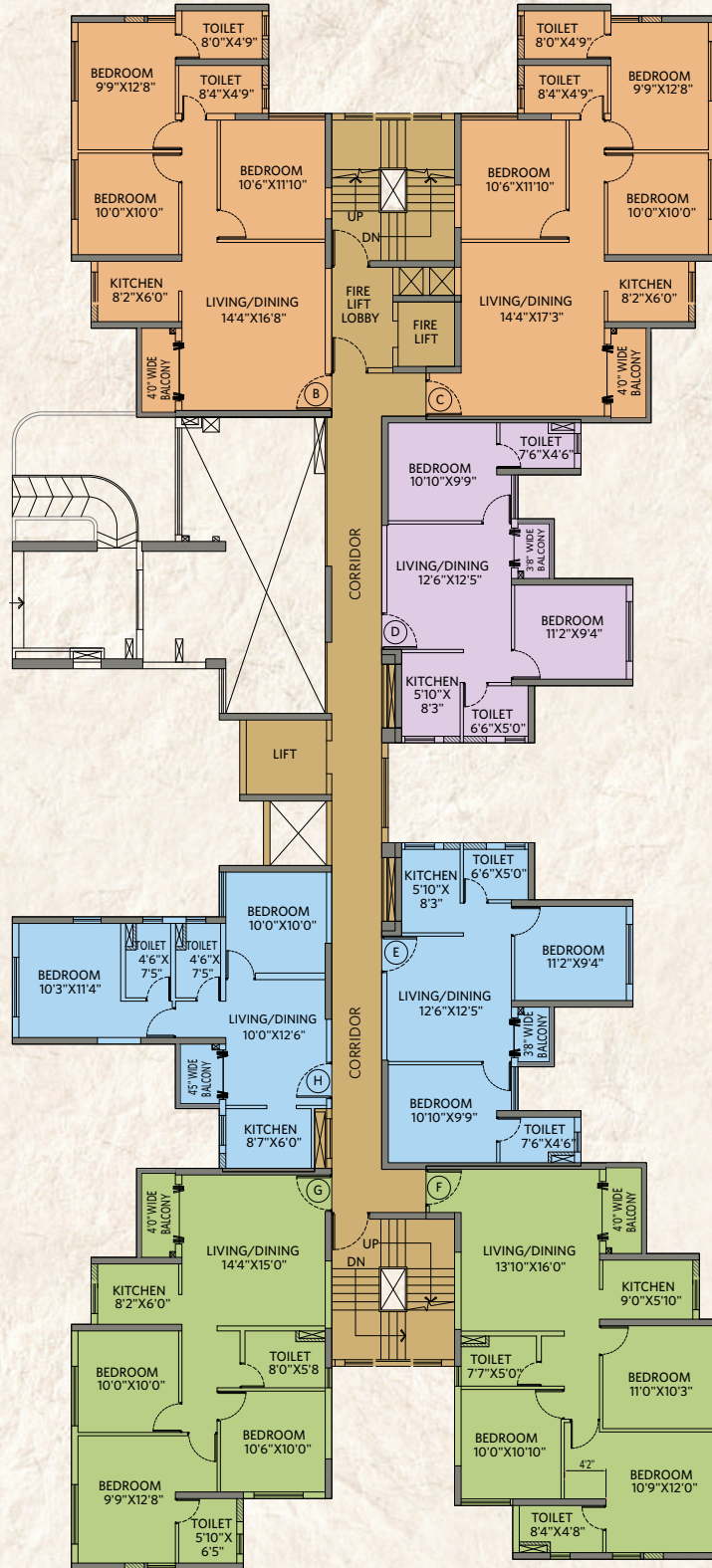


| Flat # | Flat Type | BUA | CA | BA | OT |
|--------|-----------|-----|-----|----|------------------------|
| A | 2BHK+2T | 621 | 517 | 28 | 22 (2nd floor only) |
| B | 3BHK+2T | 902 | 784 | 34 | |
| C | 3BHK+2T | 946 | 823 | 36 | |
| D | 2BHK+2T | 616 | 517 | 21 | |
| E | 2BHK+2T | 616 | 517 | 21 | |
| F | 3BHK+2T | 940 | 818 | 37 | |
| G | 3BHK+2T | 914 | 797 | 34 | |
| H | 2BHK+2T | 621 | 517 | 28 | |

BHK = Bedroom, Hall, Kitchen T = Toilet S = Study
 BUA = Built-up Area, CA = Carpet Area, BA = Balcony Area



Lotus /3C(12) First Floor Plan

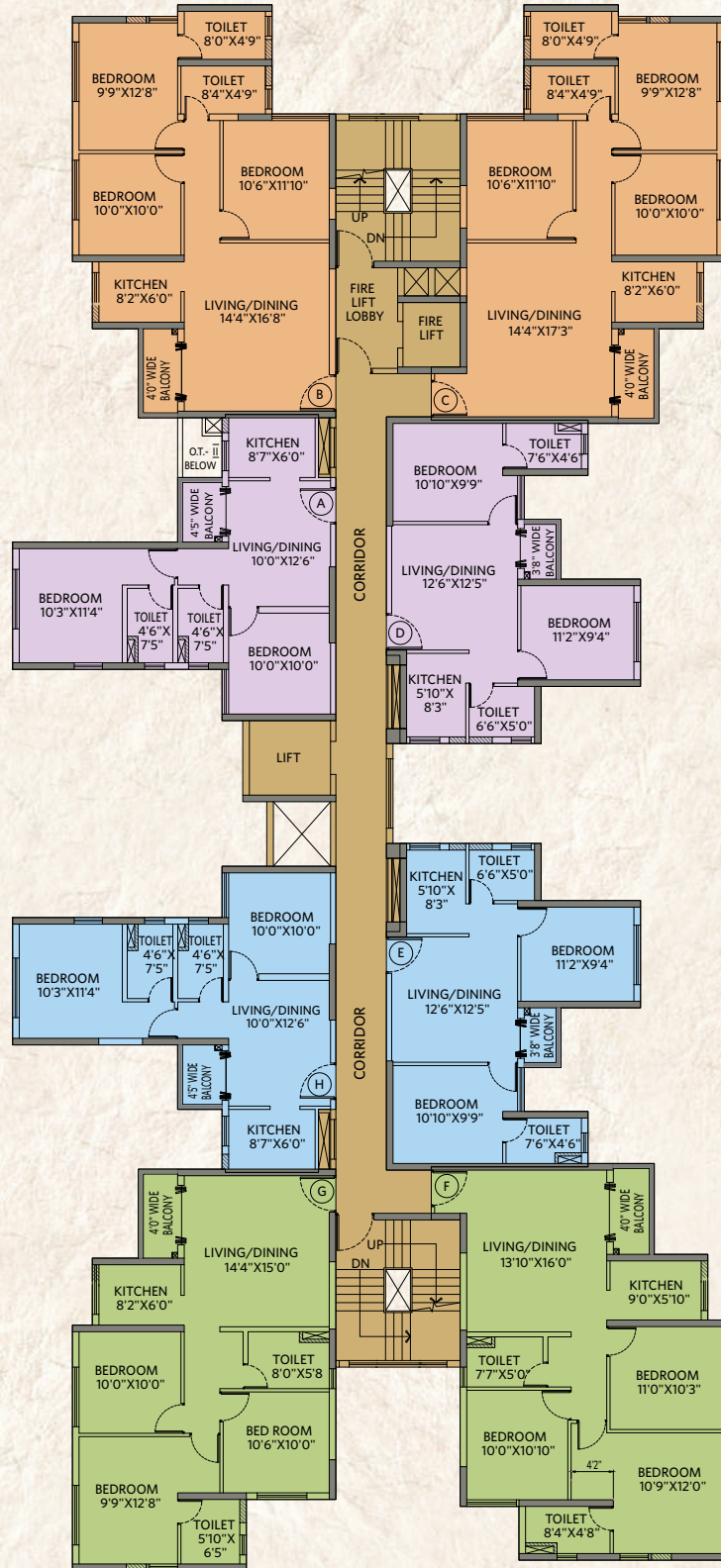


| Flat # | Flat Type | BUA | CA | BA |
|--------|-----------|-----|-----|----|
| A | NA | NA | NA | NA |
| B | 3BHK+2T | 917 | 797 | 34 |
| C | 3BHK+2T | 940 | 818 | 37 |
| D | 2BHK+2T | 616 | 517 | 21 |
| E | 2BHK+2T | 616 | 517 | 21 |
| F | 3BHK+2T | 946 | 823 | 36 |
| G | 3BHK+2T | 902 | 784 | 34 |
| H | 2BHK+2T | 621 | 517 | 28 |

BHK = Bedroom, Hall, Kitchen T = Toilet S = Study
 BUA = Built-up Area, CA = Carpet Area, BA = Balcony Area



Lotus /3C(12) First Floor Plan



| Flat # | Flat Type | BUA | CA | BA | OT |
|--------|-----------|-----|-----|----|------------------------|
| A | 2BHK+2T | 621 | 517 | 28 | 22 (2nd floor only) |
| B | 3BHK+2T | 914 | 797 | 34 | |
| C | 3BHK+2T | 940 | 818 | 37 | |
| D | 2BHK+2T | 616 | 517 | 21 | |
| E | 2BHK+2T | 616 | 517 | 21 | |
| F | 3BHK+2T | 946 | 823 | 36 | |
| G | 3BHK+2T | 902 | 784 | 34 | |
| H | 2BHK+2T | 621 | 517 | 28 | |

BHK = Bedroom, Hall, Kitchen T = Toilet S = Study
 BUA = Built-up Area, CA = Carpet Area, BA = Balcony Area

