

LIVE THE HIGH LIFE

Praneeth PRANAV  
**SOLITAIRE**

2&3BHK HIGH-RISE APARTMENTS

@BACHUPALLY



Praneeth PRANAV  
**SOLITAIRE**

Your home should be a tranquil haven that offers an escape from the stresses and strains of daily life. It should elevate your life and make you aspire for more in life. In short, it should reflect your hi-life and make a statement without saying a word.

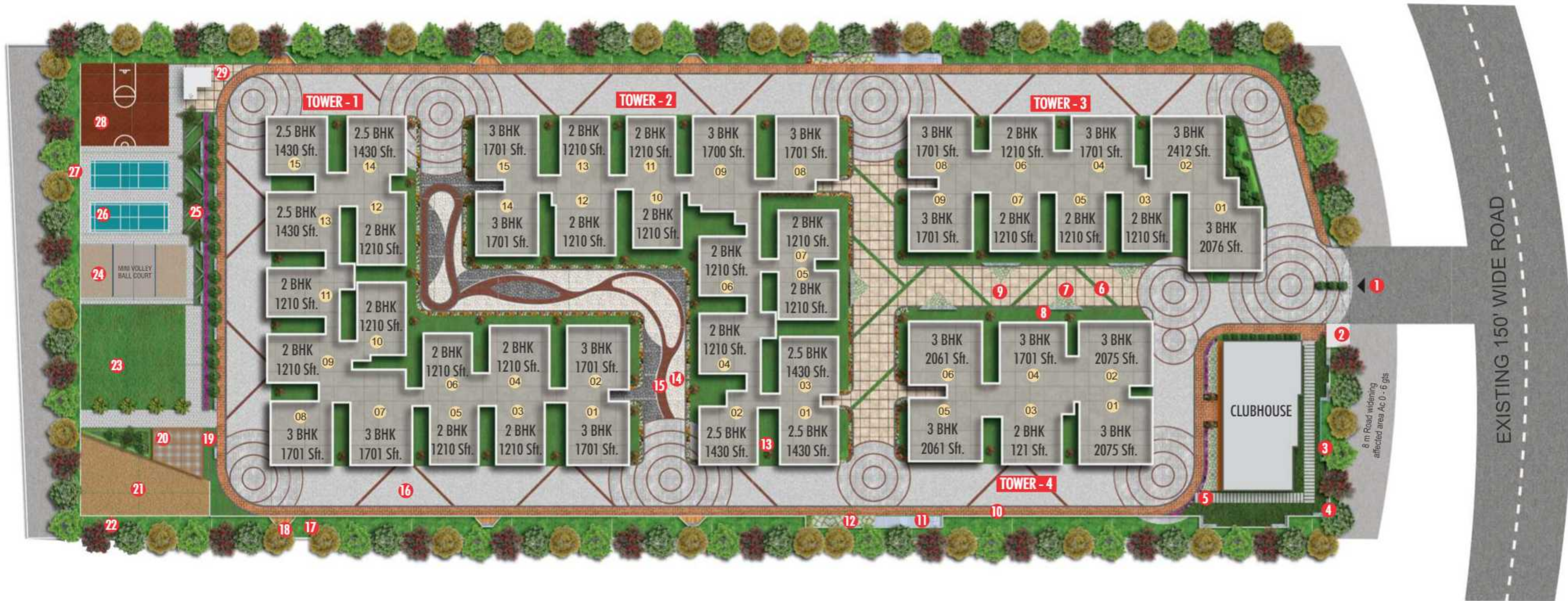
Welcome to Solitaire.

LIVE THE HIGH LIFE





# MASTER PLAN



## LEGEND:

- |                          |                                    |                                      |
|--------------------------|------------------------------------|--------------------------------------|
| 1. ENTRY                 | 11. STEPS                          | 21. KIDS PLAY AREA/SAND BED          |
| 2. WATCHMAN KIOSK        | 12. SEATING DECK                   | 22. DENSE PLANTATION WITH FLOWER BED |
| 3. SEATING SPACE IN LAWN | 13. PLANTER BOX WITH SPECIMEN TREE | 23. PARTY LAWN                       |
| 4. FEATURE WALL          | 14. GRAVEL BED                     | 24. PLAY COURT ARENA                 |
| 5. STEPPING STONES       | 15. PATHWAY                        | 25. SEATING AREA WITH PLANTATION     |
| 6. LAWN STRIP            | 16. DRIVEWAY                       | 26. BADMINTON COURT                  |
| 7. GRASS PAVERS          | 17. PLANTATION                     | 27. DENSE PLANTATION                 |
| 8. SEATING               | 18. CANTILEVER SEATING             | 28. BASKET BALL COURT                |
| 9. PAVERS                | 19. PLANTER BOX WITH PLANTATION    | 29. STAIRCASE                        |
| 10. WALKWAY              | 20. PERGOLA                        |                                      |







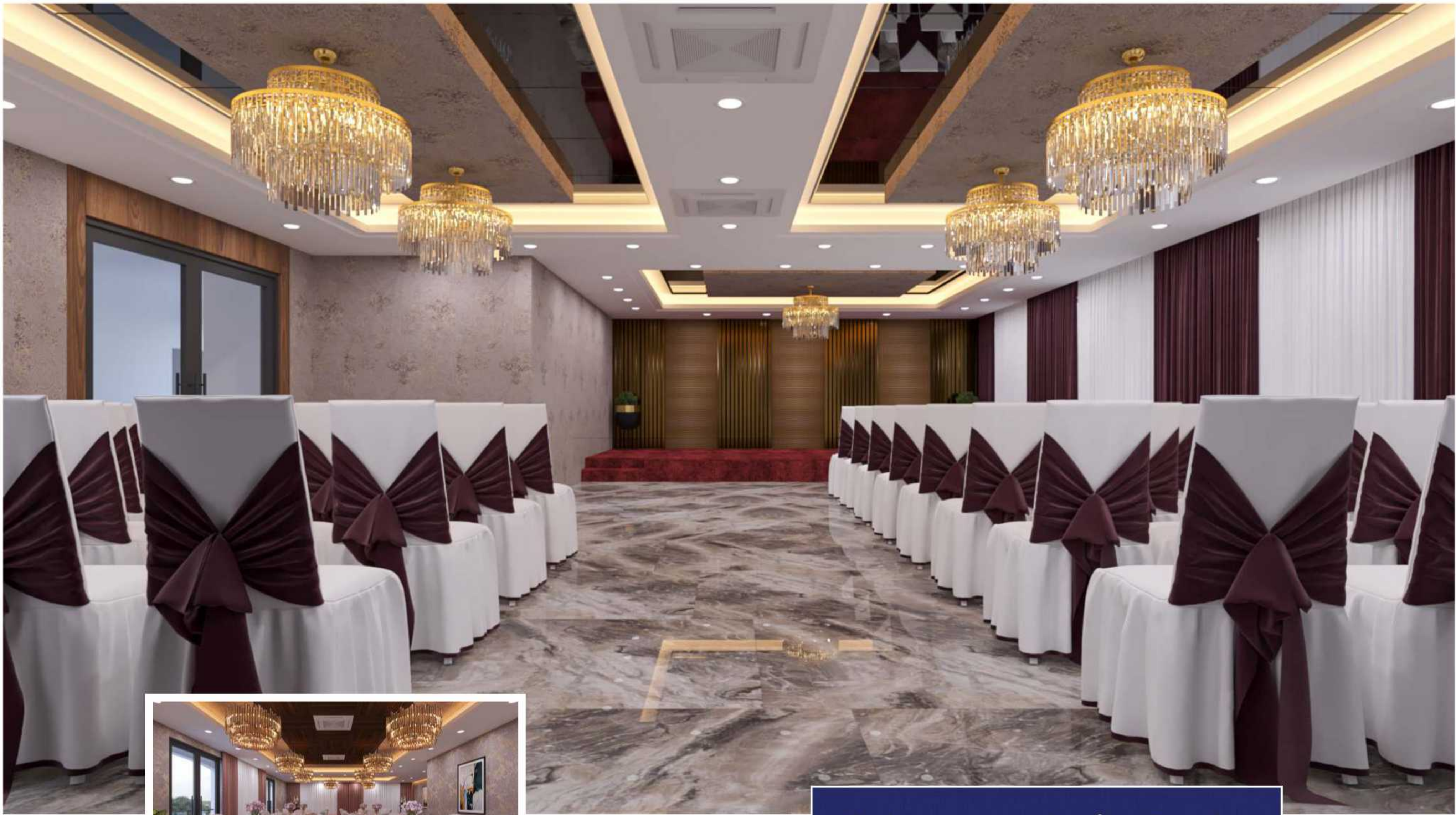
### Making natural elements a part of life.

Adding living greenery to the urban buildings, Solitaire not only creates a friendlier environment but also invites nature back into your life. The vertical landscape makes the community look natural while serves the purpose of producing more oxygen and clean air.



## Taking outdoors to the next level.

Connect with the beautiful universe that surrounds you, unwind with nature at the Solitaire's abundant green spaces. Take your game to next level with enriching sports facilities and make your everyday life active, fit and healthy.



Multipurpose Hall



Dining Hall

**Create new moments of joy. Everyday.**  
Make your next event or special party the best ever. The lavish, spacious and exclusive multipurpose hall has it all to celebrate every occasion and create everlasting memories.



Gym

**If fitness is your goal, just workout.**

Get your heart racing with a fast - paced workout or a slow walk on the treadmill at the gym. Get up, get moving and burn off the excess calories and achieve your fitness goals.

Yoga



## Open your heart to a harmonious life.

Give your guests the luxury they deserve with a guest room that boasts of refreshing ambiance and modern amenities. Connect with our loved ones and make some special memories playing indoor games. Spend your evenings reading your favorite book in your favorite corner at the library. Impress your clients by hosting your next meeting at the amazing conference hall.



Crèche



Aerobic



Salon

Guest Room



## Embrace the wonderful tranquility of life.

Breathe in the fresh air and let nature, beauty and stillness work their magic to create an unforgettable wellness experience. Indulge yourself with a soothing massage or spa treatment while your little ones develop skills and grow with a dedicated space for them- the creche.



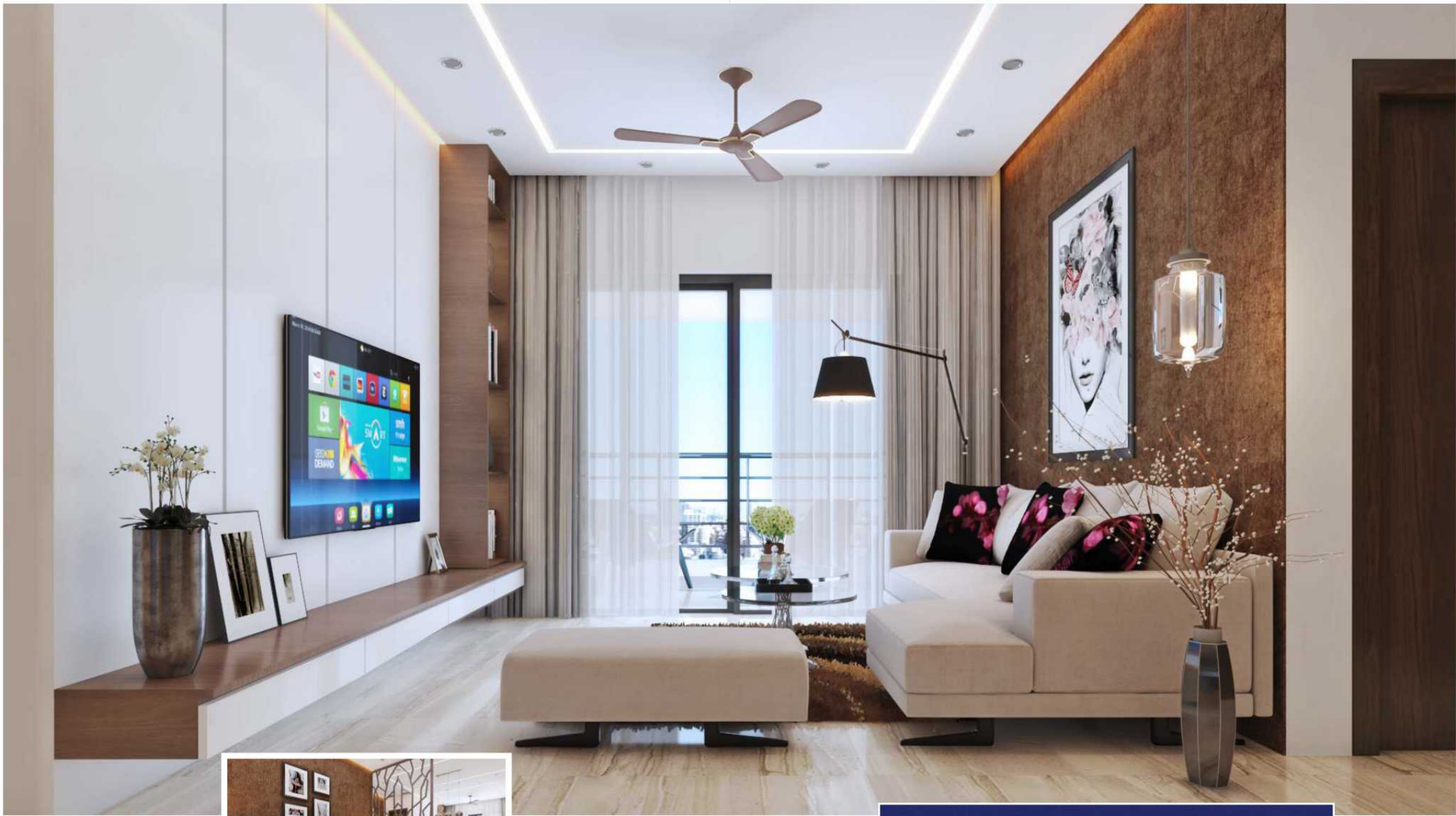
Library



Conference Hall



Indoor Games



Living Area



Drawing Room

## Homes built around you

Flooded with natural light from floor-to-ceiling, living spaces at Solitaire are thoughtfully designed for relaxation and entertaining. Each apartment is finished to an impressive specification and the interiors have a harmonious hi-end finish. The cozy interiors offer a tranquil retreat and a warm feeling of style and sophistication.

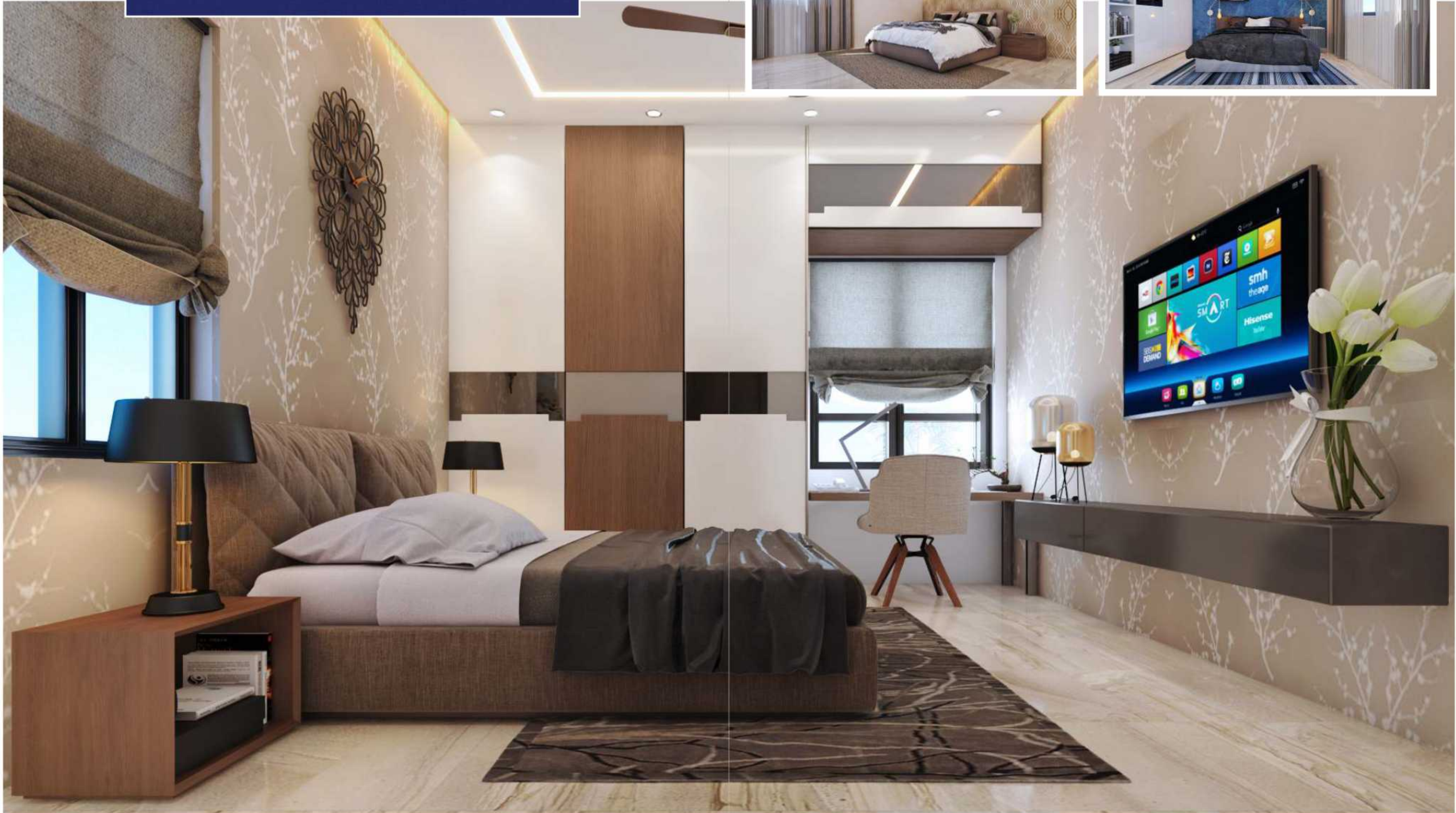
# Be the master of your choices

Start every morning enjoying your first cup of coffee or rejuvenate at the end of the day in your beautiful bedroom. Make the most of every nook and corner of your home and relax in the privacy of your own room.

Bedroom



Children Bedroom



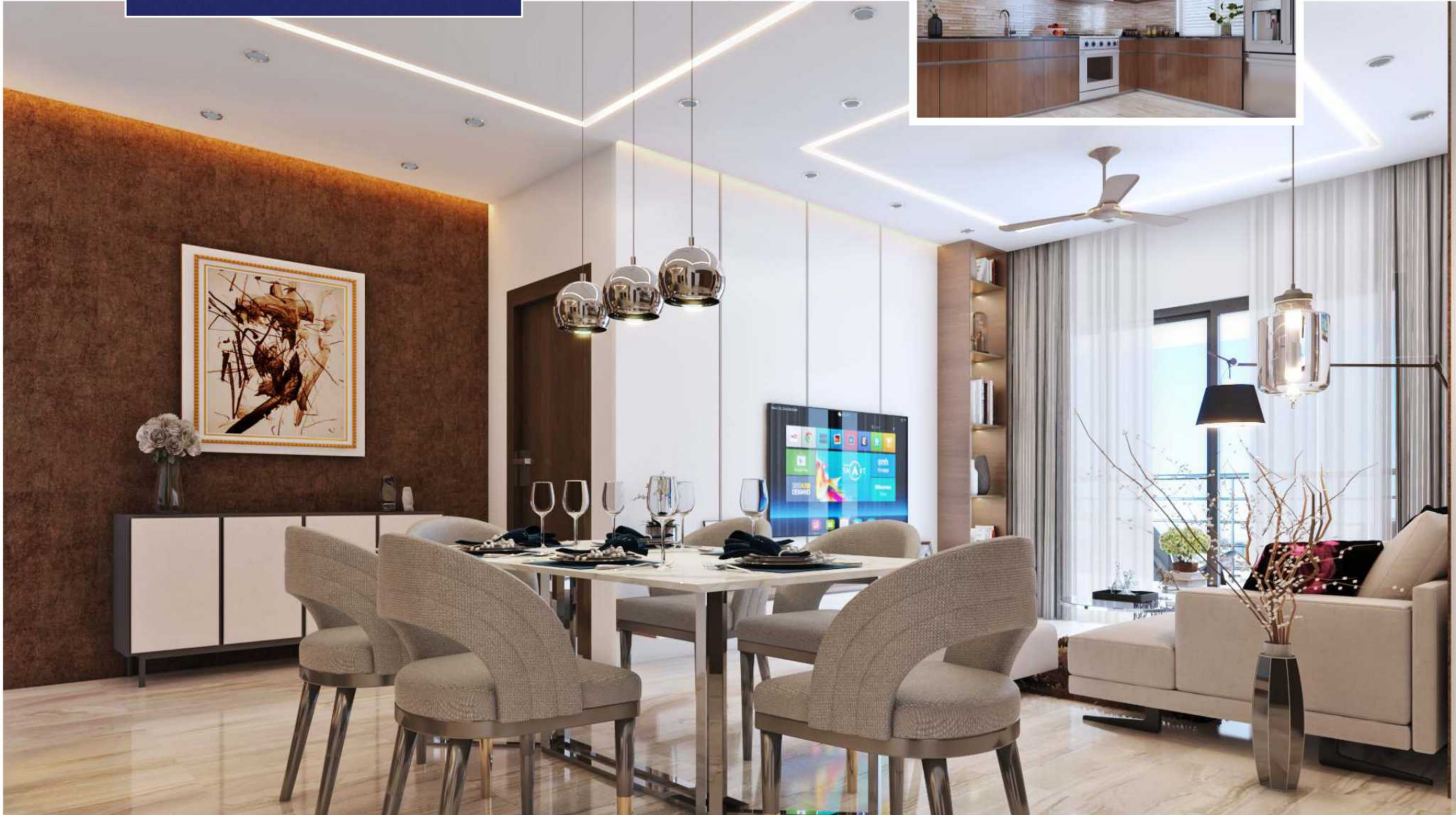
Master Bedroom

## Promote healthy eating habits.

Bond with your loved ones and share experiences that couldn't have been shared elsewhere. Entertain guests, family members and have great moments while sharing food.



Kitchen



Dining Area

**TOWER - 1**  
TYPICAL FLOOR PLAN



**TOWER - 2**  
TYPICAL FLOOR PLAN



**TOWER - 3**  
TYPICAL FLOOR PLAN



3 BHK - 2412 Sft.



**TOWER - 4**  
TYPICAL FLOOR PLAN



3 BHK - 2076 Sft.



**TYPE-10**  
**EAST FACING - 3 BHK**  
**2412 Sft.**



**TYPE-9A**  
**EAST FACING - 3 BHK**  
**2076 Sft.**



**TYPE-9A**  
**WEST FACING - 3 BHK**  
**2076 Sft.**



TYPE-8

EAST FACING - 3 BHK  
2061 Sft.



TYPE-6A

EAST FACING - 3 BHK  
1701 Sft.



TYPE-8

WEST FACING - 3 BHK  
2061 Sft.



TYPE-6B

EAST FACING - 3 BHK  
1701 Sft.



**TYPE-6A**  
WEST FACING - 3 BHK  
1701 Sft.



**TYPE-6C**  
WEST FACING - 3 BHK  
1701 Sft.



**TYPE-6B**  
WEST FACING - 3 BHK  
1701 Sft.



**TYPE-4A**  
EAST FACING - 2.5 BHK  
1430 Sft.



**TYPE-4B**  
**EAST FACING - 2.5 BHK**  
**1430 Sft.**



**TYPE-4C**  
**EAST FACING - 2.5 BHK**  
**1430 Sft.**



**TYPE-4A**  
**WEST FACING - 2.5 BHK**  
**1430 Sft.**



**TYPE-4B**  
**WEST FACING - 2.5 BHK**  
**1430 Sft.**



**TYPE-4**  
**NORTH FACING - 2.5 BHK**  
**1430 Sft.**



**TYPE-2A**  
**EAST FACING - 2 BHK**  
**1210 Sft.**



**TYPE-4**  
**NORTH FACING - 2.5 BHK**  
**1430 Sft.**



**TYPE-2B**  
**EAST FACING - 2 BHK**  
**1210 Sft.**



**TYPE-2C**  
**EAST FACING - 2 BHK**  
**1210 Sft.**



**TYPE-2E**  
**EAST FACING - 2 BHK**  
**1210 Sft.**



**TYPE-2D**  
**EAST FACING - 2 BHK**  
**1210 Sft.**



**TYPE-2A**  
**WEST FACING - 2 BHK**  
**1210 Sft.**



**TYPE-2B**  
**WEST FACING - 2 BHK**  
**1210 Sft.**



**TYPE-2D**  
**WEST FACING - 2 BHK**  
**1210 Sft.**



**TYPE-2C**  
**WEST FACING - 2 BHK**  
**1210 Sft.**



**TYPE-2A**  
**NORTH FACING - 2 BHK**  
**1210 Sft.**



# Specifications

## FRAMED STRUCTURE

RCC framed structure to withstand wind and seismic loads Zone II.

## SUPER STRUCTURE

Machine made CC blocks in cement mortar; external walls of 6"/8" thick and internal walls of 4" thick.

## PAINTING

- **Interior:** Lappam Finish, two coats of acrylic emulsion paint (ASIAN/BERGER/ICI or equivalent) over a coat of primer.
- **Exterior:** Textured finish and two coats of Exterior Emulsion paint (Weatherproof) (ASIAN/BERGER or equivalent).

## FLOORING AND DADO CLADDING

- **Living /Dining, Bed rooms & Kitchen:** 800mmX800mm vitrified tile flooring (Vermora/ Nitco/ Johnson/ Asian or equivalent).
- **Bathroom and Utility:** Anti-Skid Ceramic tiles.
- **Parking Area:** VDF flooring in Cellar Utility: Glazed ceramic tile dado up to parapet wall height tile flooring.
- **Toilets:** Designer ceramic tile dado upto 7' height.
- **Lifts:** Designer cladding with tile/granite.

## FIRE AND SAFETY

As per fire safety norms and as per the conditions specified by fire authority.

## DOORS & WINDOWS

- **Main Door:** Solid/Engineered wood frame & Flush door shutter with natural veneer of "ALEGRIA" make by Praneeth Innovatives (Aesthetically finished with melamine spray polish) or equivalent with designer hardware of reputed make.
  - **Internal Doors:** Engineered wood frame and Flush door shutters of "ALEGRIA" make by Praneeth Innovatives or equivalent with standard hardware.
  - **French Doors:** UPVC glazed sliding doors of "ALEGRIA" make by Praneeth Innovatives or equivalent.
  - **Windows:** UPVC sliding windows with plain glass with mosquito mesh of "ALEGRIA" make by Praneeth Innovatives or equivalent.
- Staircase & Balcony Railings will be provided with Mild Steel.

## PLUMBING & SANITARY

- **Water supply:** Astral/Ashirvad CPVC piping or equivalent for water supply.
- **Drainage:** Astral/Ashirvad PVC/SWG sanitary piping sewerage line will be of PVC.
- **Toilets:** EWC wall mounted and wash basin in all toilets (Kohler/Jaquar or equivalent) shower (Kohler/Jaquar or equivalent) with chrome plated fittings (Kohler/Jaquar or equivalent).
- Provision for Geyser.

## TELECOMMUNICATIONS, CABLE TV AND INTERNET

- Provision for TV connection in Hall/living & Master bedroom.
- Provision for Internet connection in Hall/Living.

## KITCHEN

Provision for water in and out points for domestic use and R.O, remaining appurtenances in owner's scope.

## ELECTRICAL

- Concealed conducting with copper fire retardant low smoke (FRLS) wiring with modular switches conforming to BIS.
- Concealed wiring (Polycab/Havells/Anchor/RR Cable or equivalent).
- Power outlet for air conditioning in all bedrooms and hall/dining. Core cutting charges will be charged extra.
- Power outlet for exhaust fan in all toilets.
- Power sockets for R.O., cooking range, chimney, refrigerator, microwave oven, and mixer grinders in kitchen.
- Modular switches/sockets of Anchor Roma/Legrand or equivalent make.
- Three phase supply for each flat with individual meters boards tapped from common LT/HT metering as per department norms and DG backup for lights & fans.
- MCB's for each circuit provided at the main distribution board in every flat of Siemens/Legrand or equivalent.
- Power plug for Washing machine/ Dishwasher in Utility area.

**LOCATION**



**A Name to Reckon With**

We, Praneeth Group, began our remarkable journey in 2007 under the aegis of Mr. Narendra Kumar Kamaraju. Over the years, with the untiring efforts of our team, we've established ourselves as a trusted real estate company in Hyderabad, especially in Bachupally.

We have delivered 20+ projects to 5000+ happy customers over the past fourteen years. We introduce new range of projects on a regular basis keeping in mind the changing needs and preferences of people. Through exceptional construction quality, on-time delivery, innovation and business excellence, we strive to deliver strong value on investment to every customer. Moreover, our projects complement the seamlessly connected lifestyle with calm and pleasant surroundings.

**An upscale neighbourhood.**  
 With a transport network as efficient as Bachupally's, distance is little of an issue – Outer Ring Road, National highway and IT corridor are just minutes away. And with the Metro Station just 15 minutes away from home, you'll find that you can get to wherever you want rapidly, effortlessly and comfortably



Usha Mullapudi Hospital      Malla Reddy Hospital



ORR Exit #5      Oakridge School



Ambitus World School      Tech Mahindra



Praneeth PRANAV  
SOLITAIRE



Praneeth  
G R O U P

Plot No.797, 3rd & 4th floors, AARKA PRIME, Rd Number 36, Jubilee Hills, Hyderabad, Telangana 500034.