

**WESTGATE**
ELITE
SHOPS, OFFICES
& RESIDENCE

Developers: Patel Developers

Site: Beside Ramdev Park, Undera-Koyli Road,
Undera, Vadodara - 391330.
(M): +91 78598 69934



Structural Consultant:
ZARNA ASSOCIATES

Rera Web.: gujrera.gujarat.gov.in
Rera Reg. No.:

Design: studio@zarna.com, jim21@zarna.com



**WESTGATE**
ELITE
SHOPS, OFFICES
& RESIDENCE



REIGN SUPREME

- A Plush Elevation
- Road-facing Frontage
- Excellent Commercial Location
- Premium Finishes

Designed for success, the magnificent facade is sure to cast a lasting first impression. The timeless design, thoughtful planning and road-facing advantage to each and every unit of this contemporary complex, enhances visibility and business potential.

Westgate Elite offers Retail Spaces on ground, first and second floors and Corporate Office Spaces from Third Floor onwards. The commercial spaces offer a perfect harmony of class and convenience. They are created to reflect your worth with a wide array of features that ensure sophistication, easy maintenance and superior value on your investment.

The excellent infrastructure, a sought after location and the most competitive pricing makes Westgate Elite the perfect venue for your business to thrive, today & tomorrow.



SPECIAL FEATURES & FACILITIES

- S.S. finished automatic elevators
- Common lighting
- Provision for one water/drainage point for each unit at particular location as per design only
- Large concrete/paved instant parking on GF area and basement parking
- CCTV camera at strategic locations for enhanced security



SPECIFICATIONS

Structure & Wall Construction

- Earthquake resistant RCC framed structure design. Internal & External masonry work with brick/block.
- Internal wall with laphi & primer and external wall with weather proof paint over double coat plaster.

Doors & Windows

- Flush door with both side laminate & safety locks / M.S. rolling shutter with color.
- Powder coated aluminum sliding / glazing openable window.

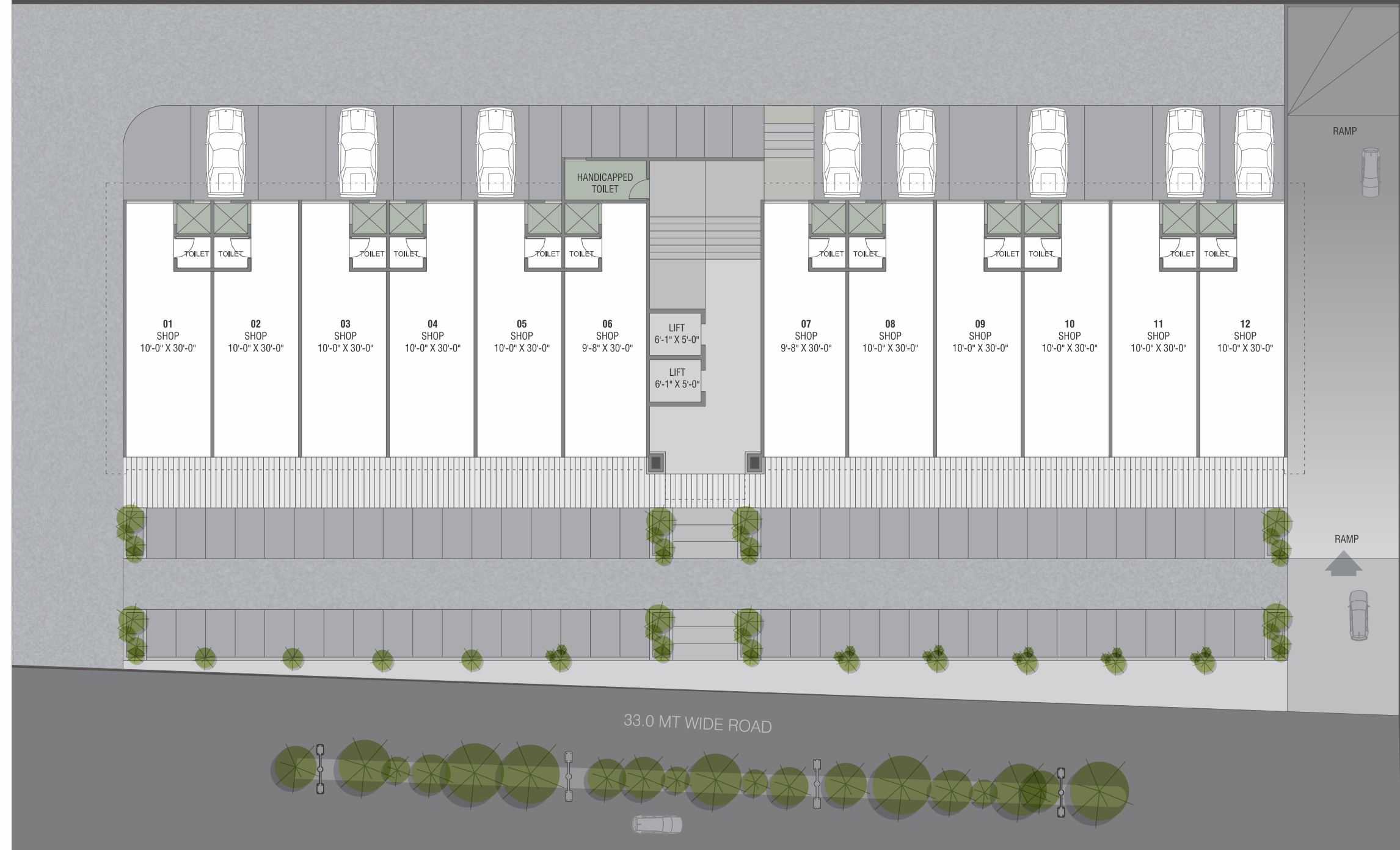
Flooring & Wall Cladding

- Vitrified tile flooring with skirting in all units.
- Natural Stone / Vitrified Tile / Tremix Concrete flooring in common area.

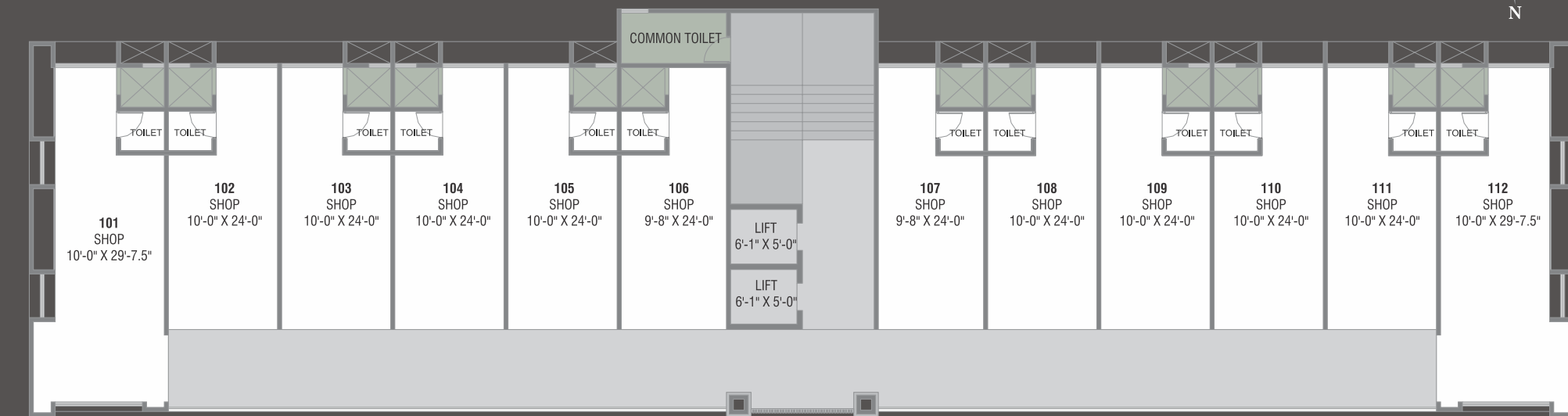
Electrification

- Sufficient electric points with concealed wiring along with modular switches.
- Provision for three phase meter on demand at extra cost.
- Exterior glazing & ACP Work as per architect's design only.

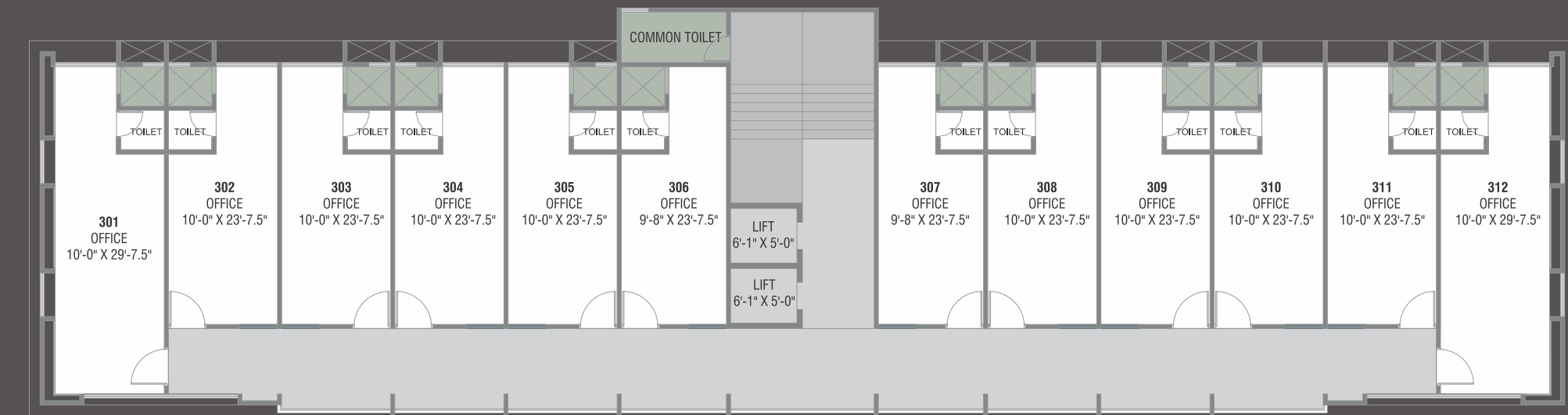
GROUND FLOOR



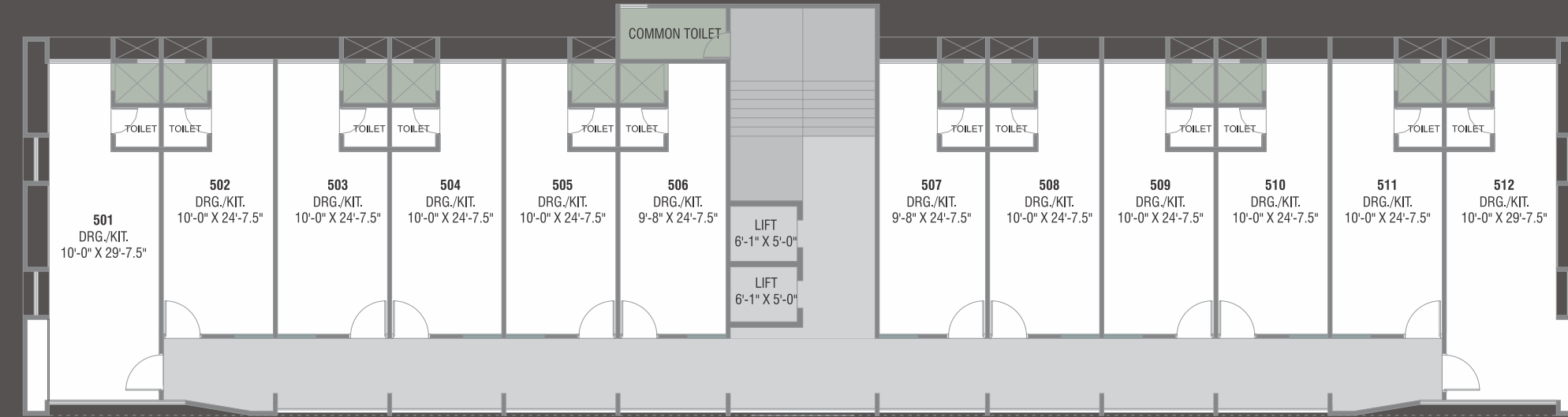
FIRST & SECOND FLOOR



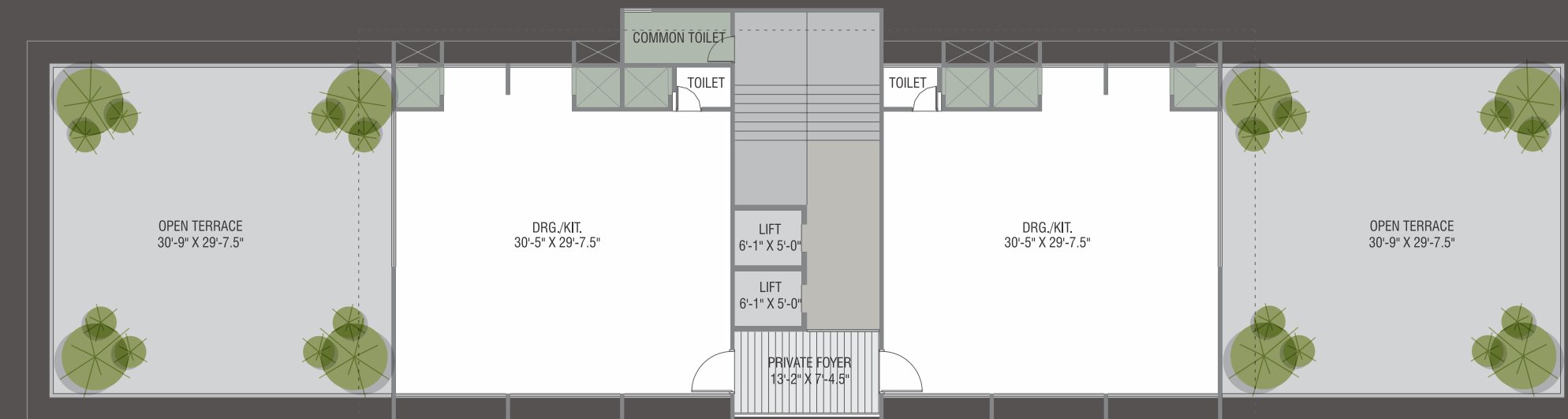
THIRD & FOURTH FLOOR



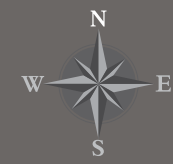
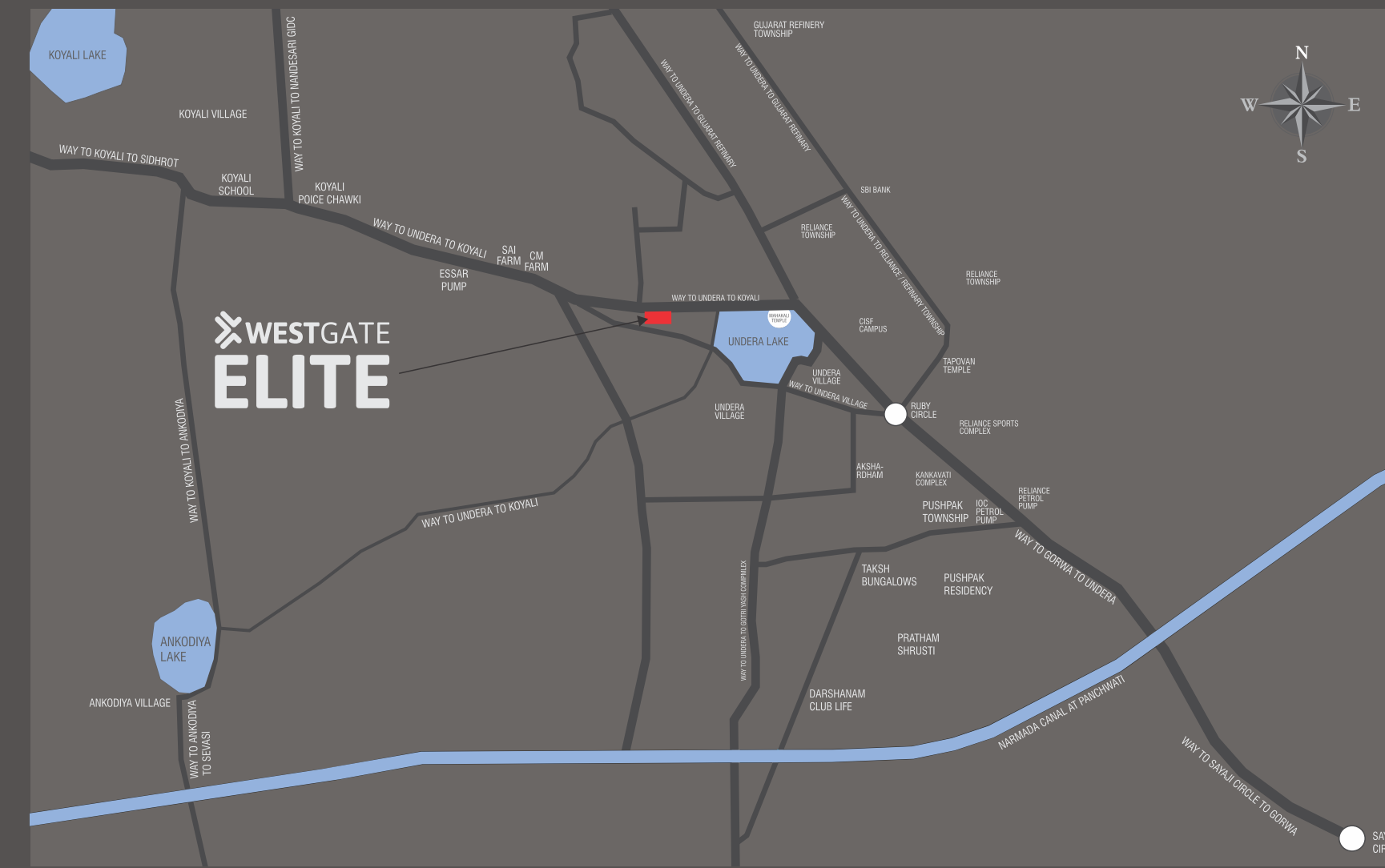
FIFTH & SIXTH FLOOR



SEVENTH FLOOR



KEY PLAN



Payment Schedule: 20% on Booking | 15% at Ground Floor Slab | 10% at 3rd Floor Slab | 10% at 6th Floor Slab | 10% at 7th Floor Slab | 10% at Masonry work up to 5th Floor | 10% at individual Plaster Level | 10% at individual Finishing | 5% at Finishing / Possession

Disclaimer: • The information contained in this brochure is subject to change as may be approved by the competent authorities and cannot form part of any form or contract. • All plans are subject to any amendments approved by the competent authorities. • This brochure shall not be treated as a legal document; it is only for the purpose of information. • The areas are indicative only. The measurements indicated in the plan may vary at the time of construction. • All landscaping is conceptual and shall be as per architect's design. Illustrations in this brochure are artist impressions and serve only to give an approximate idea of the project. While every reasonable care has been taken in providing this information, the developers cannot be held responsible for any inaccuracy. • The developers reserve all the rights to make any changes as may be necessitated from time to time in the layout, building plan and specifications without any prior notice. Such changes would be binding to all members.