

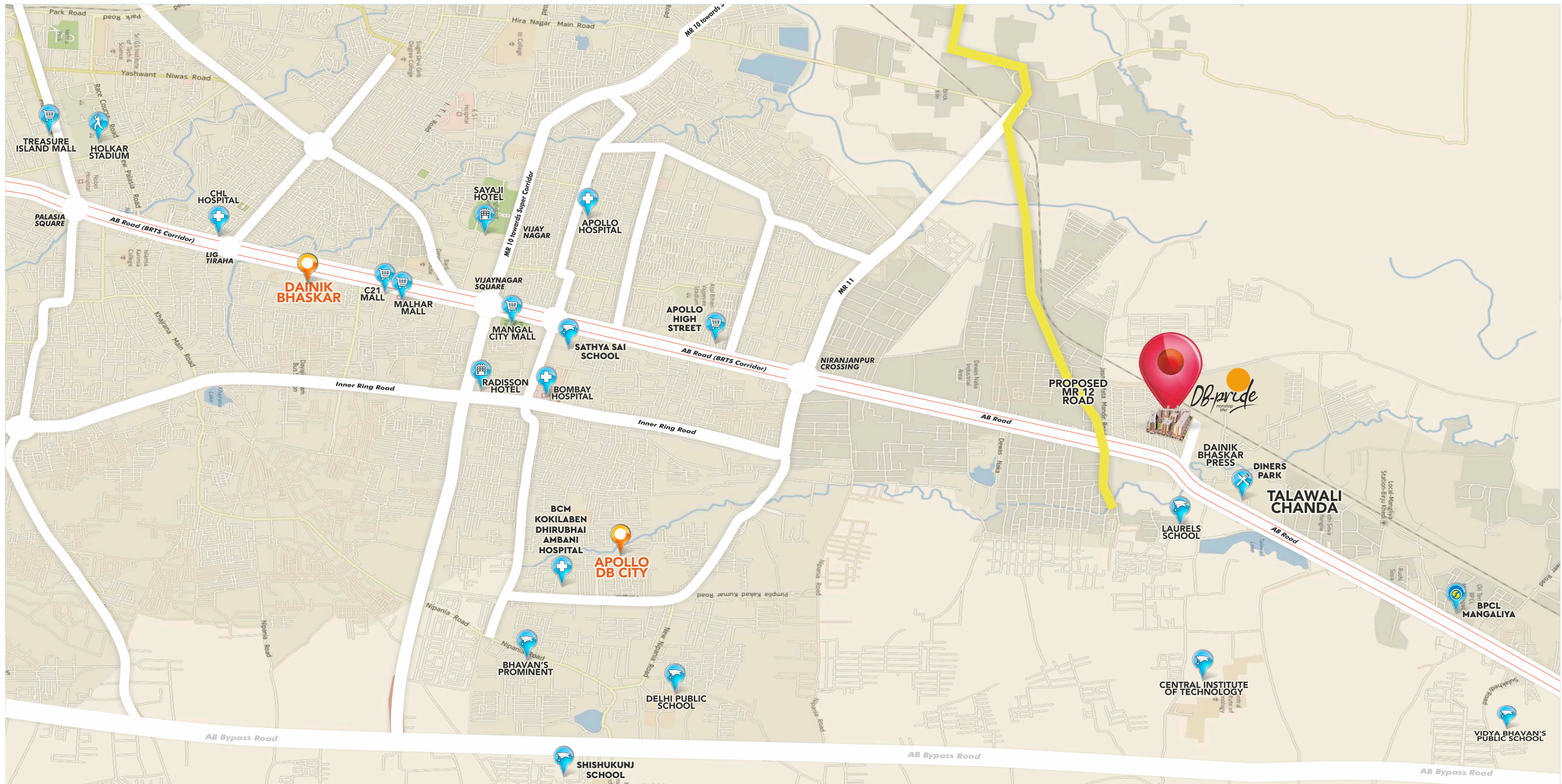


WHERE
HAPPINESS
LIVES



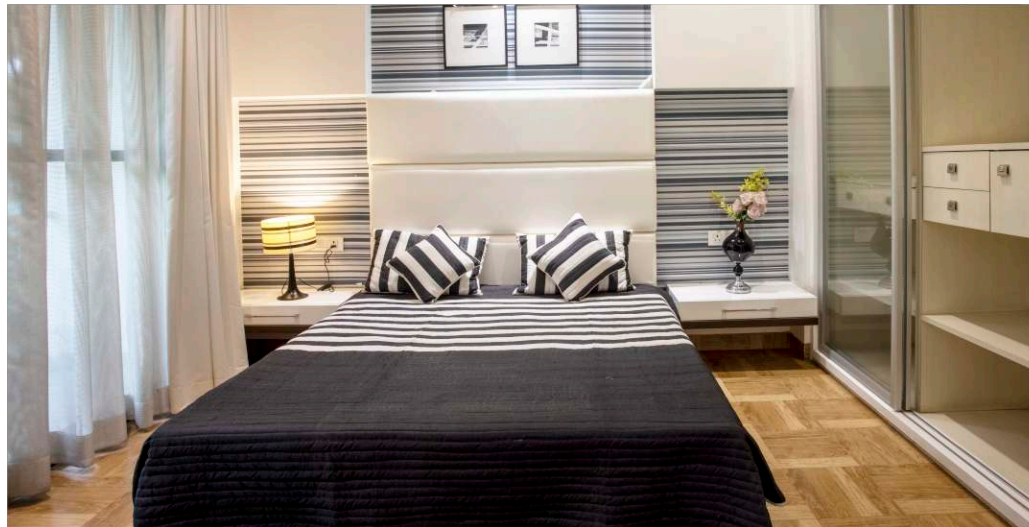
**NEW MIXED
TOWER WITH
2, 2.5 & 3 BHK
RESIDENCES**

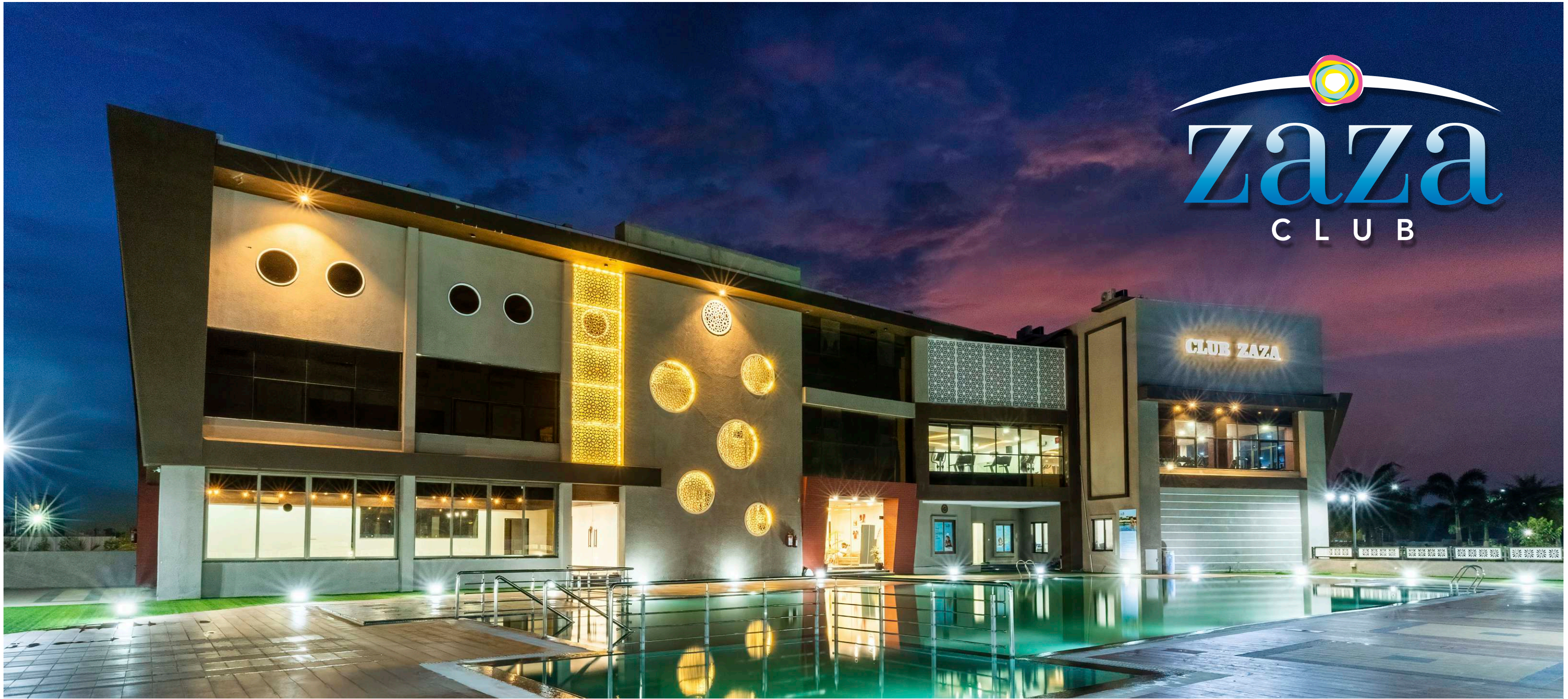




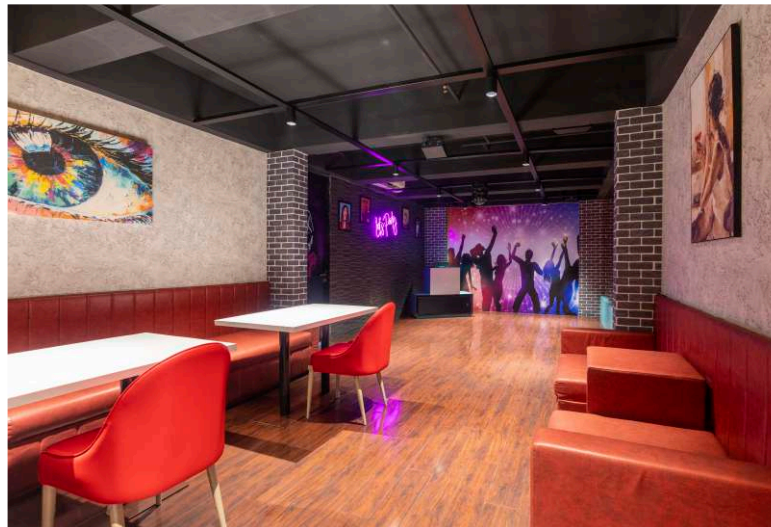
SITUATED AT THE HEART OF INDORE'S GROWTH

Sathya Sai School	Bombay Hospital	Laurels School	Niranjanpur Square	Apollo High Street	Devi Ahilyabai Holkar International Airport	Ujjain	Railway Station Road, Chhoti Gwaltoli
5.2 Km	5.9 Km	1.1 Km	3.2 Km	4.6 Km	35 Mins	57 Km	12 Km





zaza
CLUB





FLOOR PLAN BLOCK C2



2.5 BHK



Carpet Area = 888.02 Sqft.

Built Up Area = 1068.58 Sqft.

Super Built Up Area = 1496.01 Sqft.



2 BHK



Carpet Area = 769.12 Sqft.

Built Up Area = 940.21 Sqft.

Super Built Up Area = 1316.29 Sqft.



3 BHK

Carpet Area = 910.40 Sqft.

Built Up Area = 1091.60 Sqft.

Super Built Up Area = 1528.24 Sqft.



SPECIFICATIONS



STRUCTURE

Earthquake resistant RCC framed structure with walls in ACC Blocks & Fly Ash Bricks.



BEDROOMS

Flooring: Vitrified tile flooring and skirting
 Walls/Ceilings: Putty finished walls painted with ISI Mark Paint
 Provisions: Adequate electrical points with modular switches and provision of AC, TV in master bedroom
 Windows: Powder coated aluminum windows



TOILETS

Flooring: Anti-skid ceramic flooring
 Walls: High Glossy wall tile
 Provisions: Concealed Plumbing for water supply as per norms with standard quality material of ISI mark
 Fitting/Fixtures: EWC & Wash basin with CP Fittings
 Walls/Ceilings: Paint on ceiling



BALCONIES

Flooring: Ceramic flooring tiles and skirting
 Walls/Ceilings: Exterior Paint/Texture
 Others: MS Safety railing



EXTERIOR FINISHES

Paint: ISI Mark Paint



LIVING/DINING/PASSAGE/LOBBY

Flooring: Vitrified tile flooring and skirting
 Walls/Ceilings: Putty finished walls painted with ISI Mark paint
 Provisions: Adequate electrical points with modular switches and provisions for TV and AC



JOINERY

Doors: Door Frame/Shutter - Wooden & Teakwood
 Windows/Ventilators: Powder coated aluminum windows



KITCHEN

Flooring/Walls: Vitrified tile flooring and skirting, Dado finish on kitchen platform
 Platform: Granite platform with stainless steel sink of ISI mark
 Provisions: Plumbing and Electric provisions for RO/Water Purifier and Chimney
 Ceramic tiles for walls, floor, wash area and skirting



ELECTRICALS

Provisions: Wiring in concealed conduits, modular switches as per norms with ISI mark



COMMON AREAS AND SERVICES

Flooring: Vitrified Tiles/Ceramic Tiles/Granite/Kota Stone
 Walls: Combination of Granite/Tile Cladding and Paint
 Lift: Lifts in each tower
 Power Back-up: 100% in common areas and utility services as per Government Norms