



PRIDE





# *Welcoming you to* **Protech Pride, The World For Everyone**

What about a lifestyle that tells an epic story for everyone?

Presenting Pride - an amiability-inspired community living amidst a new-age urban lifestyle with lavish 2-BHK and 3-BHK apartments filled with contemporary amenities. The stunningly beautiful rooftop skywalk connects you to the epitome of luxury.

# Taking Your Lifestyle Up-A-Notch

Set on an expansive greenery landscape amidst an urban lifestyle, Protech Pride stands tall as pillars of bliss over an idyllic panorama of fun, freedom and frolic.

This magnificent destination lets you ride high. This is where the world salutes you.

Your epic story starts here.





*Turning colourful dreams*

*into a joyful reality*

# Where Kids

## Discover the Joys of Life

Introduce your kids to a conducive environment. Fill their life with adventure, joy and thrill. The absolutely safe modern play areas keep kids highly active and healthy. The multi-activity room develops their social skills, apart from sharpening memories. Pride has crafted a separate party lawn for your kids, just to let them celebrate their memorable moments.

After all, they need a splash of creativity to grow.



### Indoor

- Kids' swimming pool
- Children's indoor play area
- Creche
- Kids' multi-activity room

### Outdoor

- Kids' play area
- Party lawn & deck area for kids

# Where You Discover the Purpose of Life

Come to a world where every Friday and Saturday is soul-satisfying. Where Sundays give you much-needed freedom and Mondays set the pace of life. Let brilliant ideas crack new deals at our avant-garde business hub. The kitty party area makes every woman feel on top of the moon.

Pride is such an iconic address that empowers you with a sense of achievement.

## Indoor

- Games room
- Jacuzzi & steam
- Kitty party
- Karaoke & dance area
- Business centre
- Music & dance room



## Outdoor

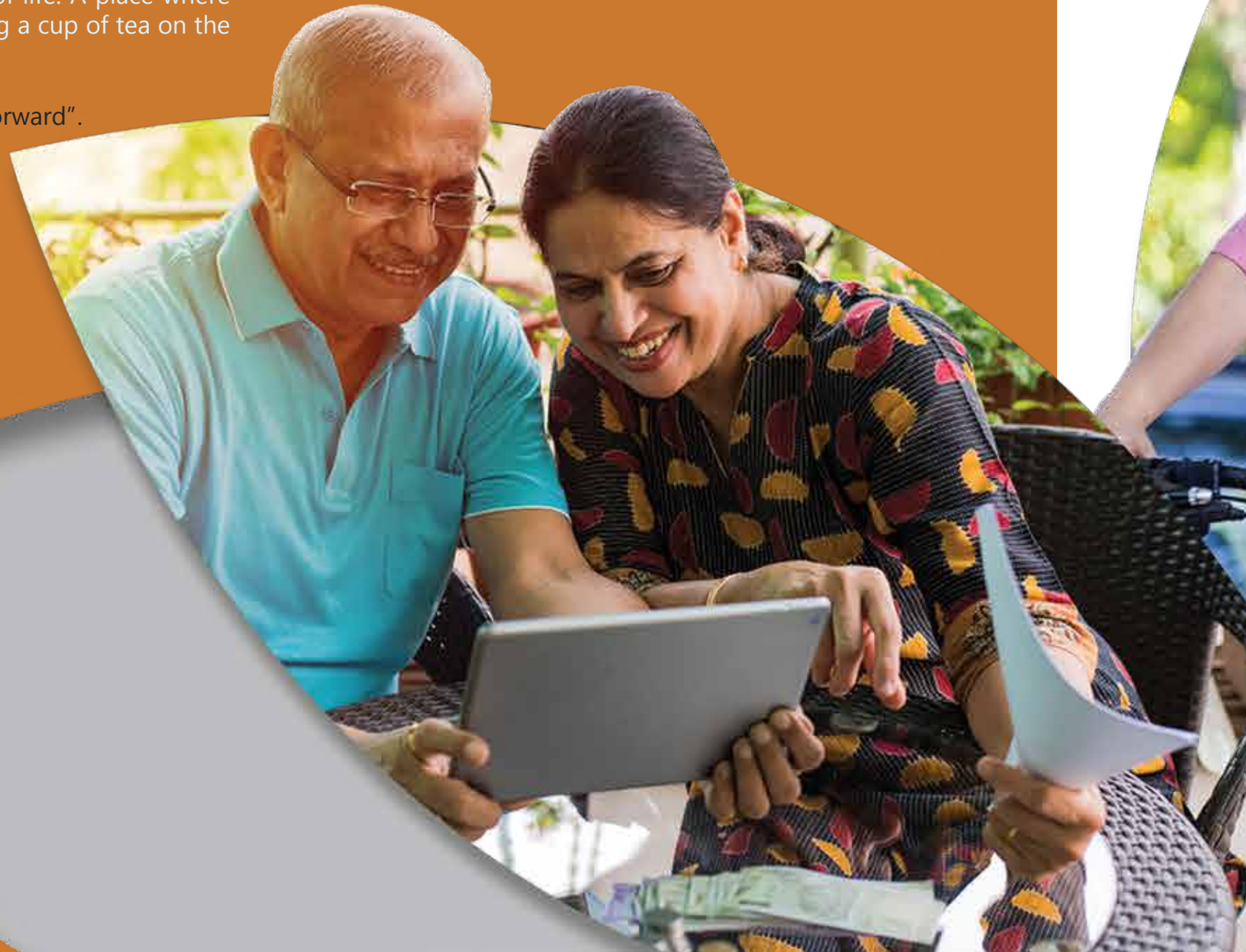
- Gazebo
- Amphitheatre
- Skating space
- Outdoor game area - cricket, basketball, & badminton on the terrace
- Party lawn & desk area on the terrace
- Barbeque on the terrace

# Where You Explore

## The New You

The world of Pride lets you reinspire, re-energise, and reinvigorate. The walkway at the bamboo garden keeps your heart healthy. The yoga and meditation room helps you embrace a new chapter of life. A place where you don't just remember glorious chapters, by sipping a cup of tea on the balcony, but also indulge in every moment.

Where every flora and fauna whispers "Come, move forward".



### Indoor

- Yoga and meditation room (Under Gazebo)

### Outdoor

- Senior citizens walkway at bamboo garden
- Garden terrace

# Where Life is Exceptionally Fulfilling

Pride brings your family to a world that will uplift your joy of togetherness. A destination where you don't have to go out for family vacations. Where you dive into the spheres of merriment every day. The joy of getting refreshed with your kids in the temperature-controlled swimming pool during winter, doing meditation with your better half under the gazebo, or playing your favourite game together at the multipurpose court is incredibly precious.

## Indoor

- Adult swimming pool
- Kids' swimming pool
- Gymnasium
- Yoga and meditation room (under gazebo)
- Banquet hall with attached toilet & kitchen
- Cafeteria with cloud kitchen concept
- 2 guest rooms for society



## Outdoor

- Multipurpose court
- Acupressure walkway
- Jogging track
- Meditation deck

*Make the rest of your life  
the best of your life*

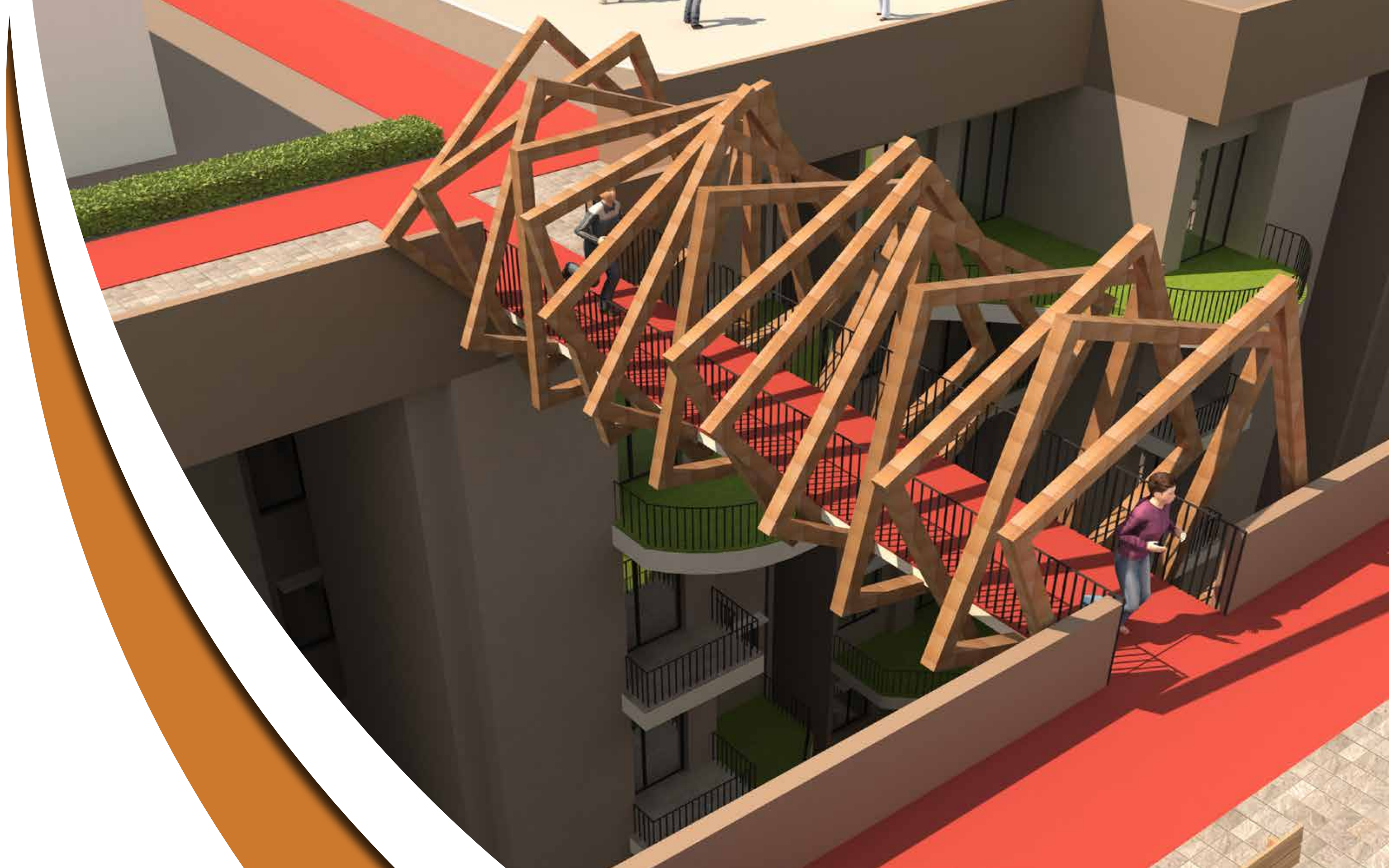


*Own Sky Bridge With 35,000 sq.ft. Rooftop*

**Just Your Way!**

The exquisitely crafted rooftop sky bridge clasps a 35000 sq. ft. lavish contemporary terrace. Make it one of your prized possessions. Brighten up your mornings and light up your evenings. Be it improving your photography skill or having an informal conversation, the sky bridge will present you with a unique lifestyle the way you have dreamt it.

Come. Rise to the height of abundance with panache.





*Pride The Club*  
**Spanning across 6900 sq. ft.**

Pride presents you with a contemporary-style clubhouse that exudes magnificence. This 6900 sq. ft. clubhouse has the best-in-class indoor club and a lavish club terrace spanning a 2300 sq. ft. area. The interplay of luxury and privacy in the clubhouse has made Pride one of the most sought-after residences in Guwahati.



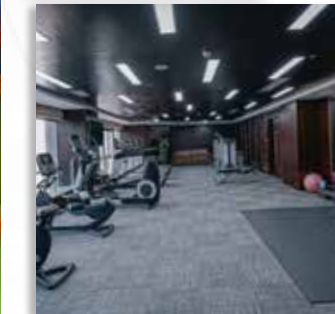
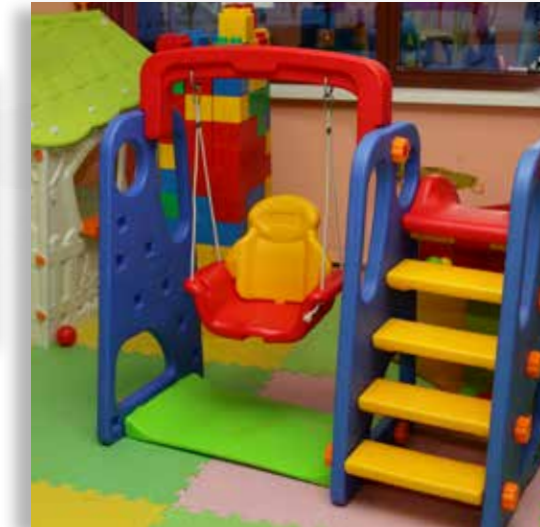
Swimming pool



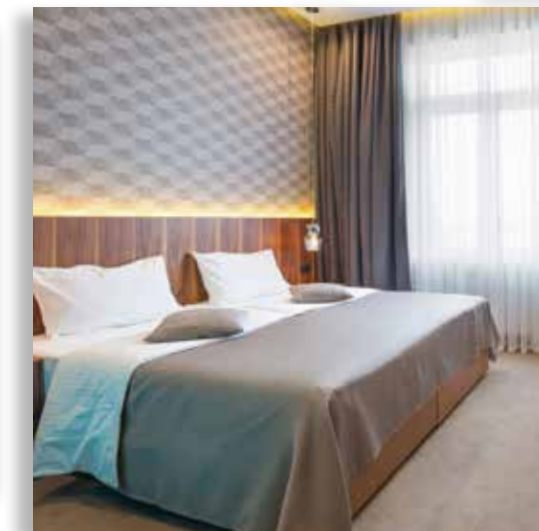
Co-working space



Baby creches



Gymnasium



Guest house with 2 rooms



Tuition centre



Reception

Changing Room

Kids' Swimming Pool

Gymnasium

Swimming Pool

Ground Floor



Cafe

Guest Rooms

Kitchen

Banquet

1st Floor



**2nd Floor**



**Terrace**



*Where We Ensure Privacy*

**For The Women of Your House**

Now not only men but also women in your family can swim without any worry. Let them splash privately in a plush indoor pool, not just in summer but in any season.



*Where You Remain Carefree.*

## **Creche: For Your Baby**

The creche ensures a safe space for your babies. This safe, happy, and healthy environment lets your babies talk, communicate, and walk confidently. We engage with parents and families to help every toddler grow socially and emotionally. A place where there is someone to take care of your loved one, even when you are not around. Protech meets your lifestyle requirements, keeping in mind the safety and privacy of your children and family.



*The Best-in-class*

## **Tuition Centre at Home**

Pride The Club presents you with a new-age tuition centre that helps your kids interact with your tutors confidently. The space is uniquely designed to communicate freely and encourages kids to express creative ideas. A perfect learning space for kids.



*Enjoy Work From Home*

## **While Being with a Vibrant Community**

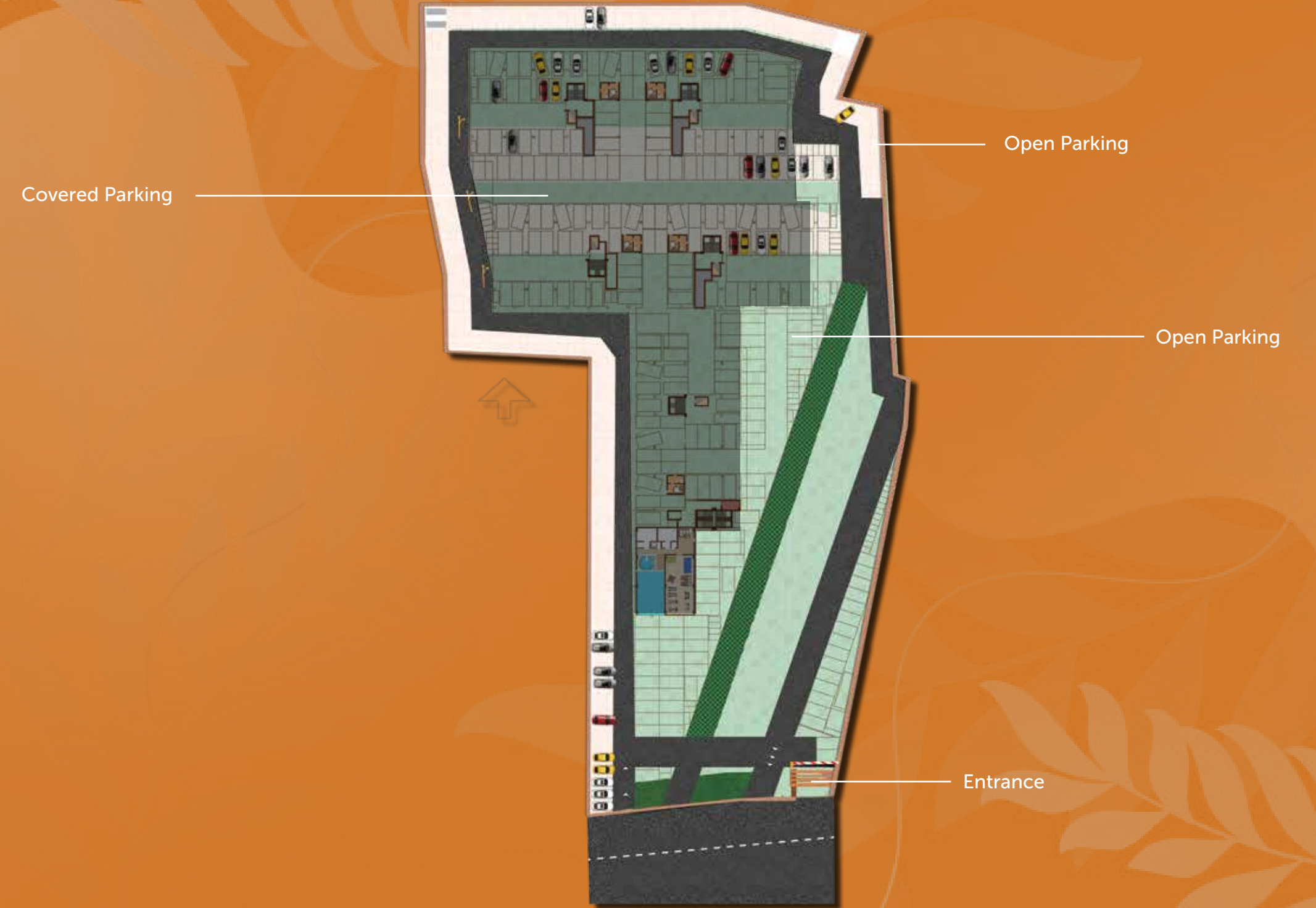
The co-working space on the second floor of the clubhouse lets you socialise, communicate and accelerate your career. Whether you are a freelancer, consultant or busy techpreneur, tPride The Club carefully designs unique spaces to help you network with people like you. What a place to have fun and mingle with the vibrant community!



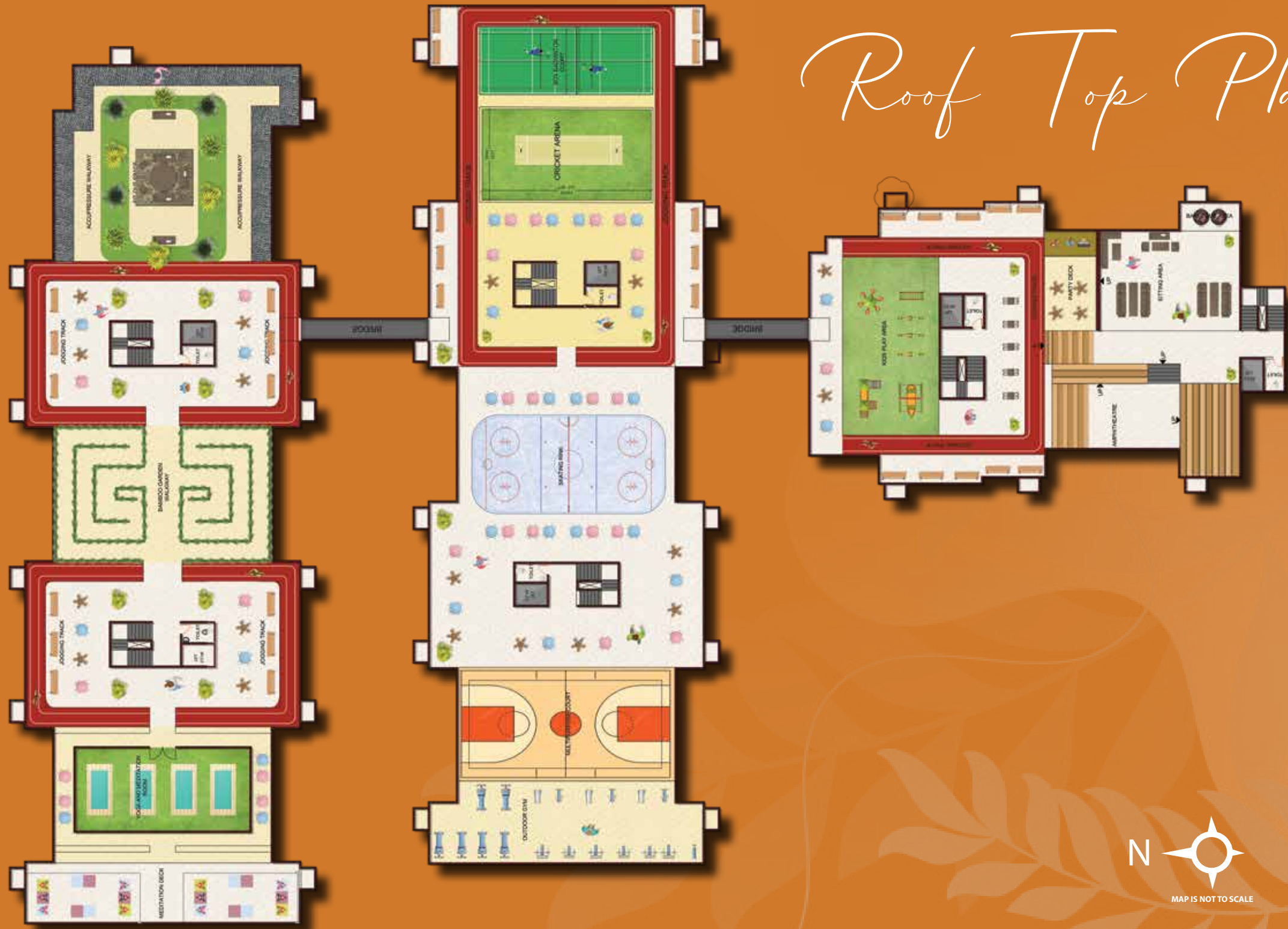
# Master Plan

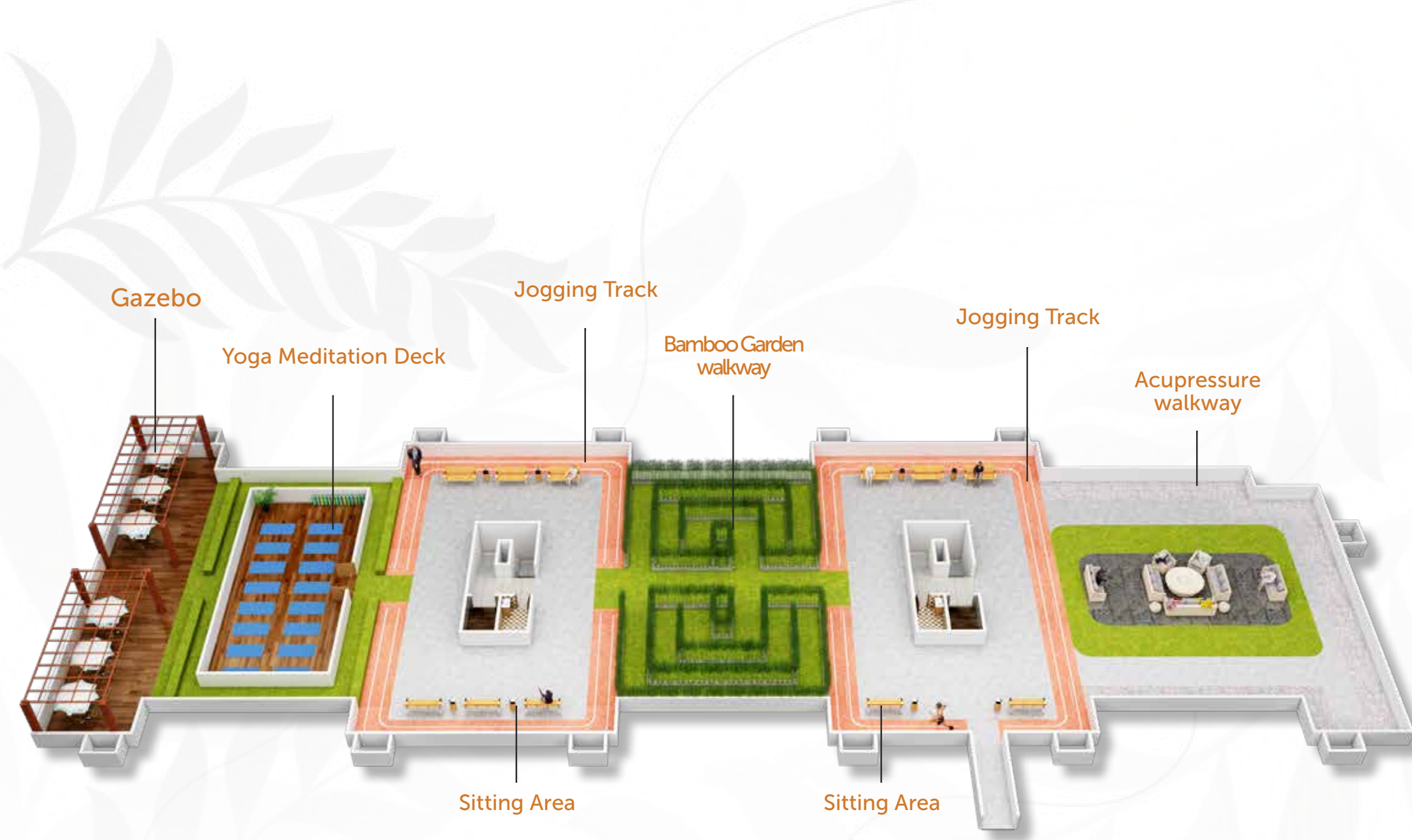


# Parking Plan



# Roof Top Plan





**Block C**



**Block B**



**Block A**

Sports can't get any more exciting than in this arena. Bring out your talent and team spirit.

- 🍷 Skating rink
- 🍷 Basketball court
- 🍷 Badminton court
- 🍷 Cricket area



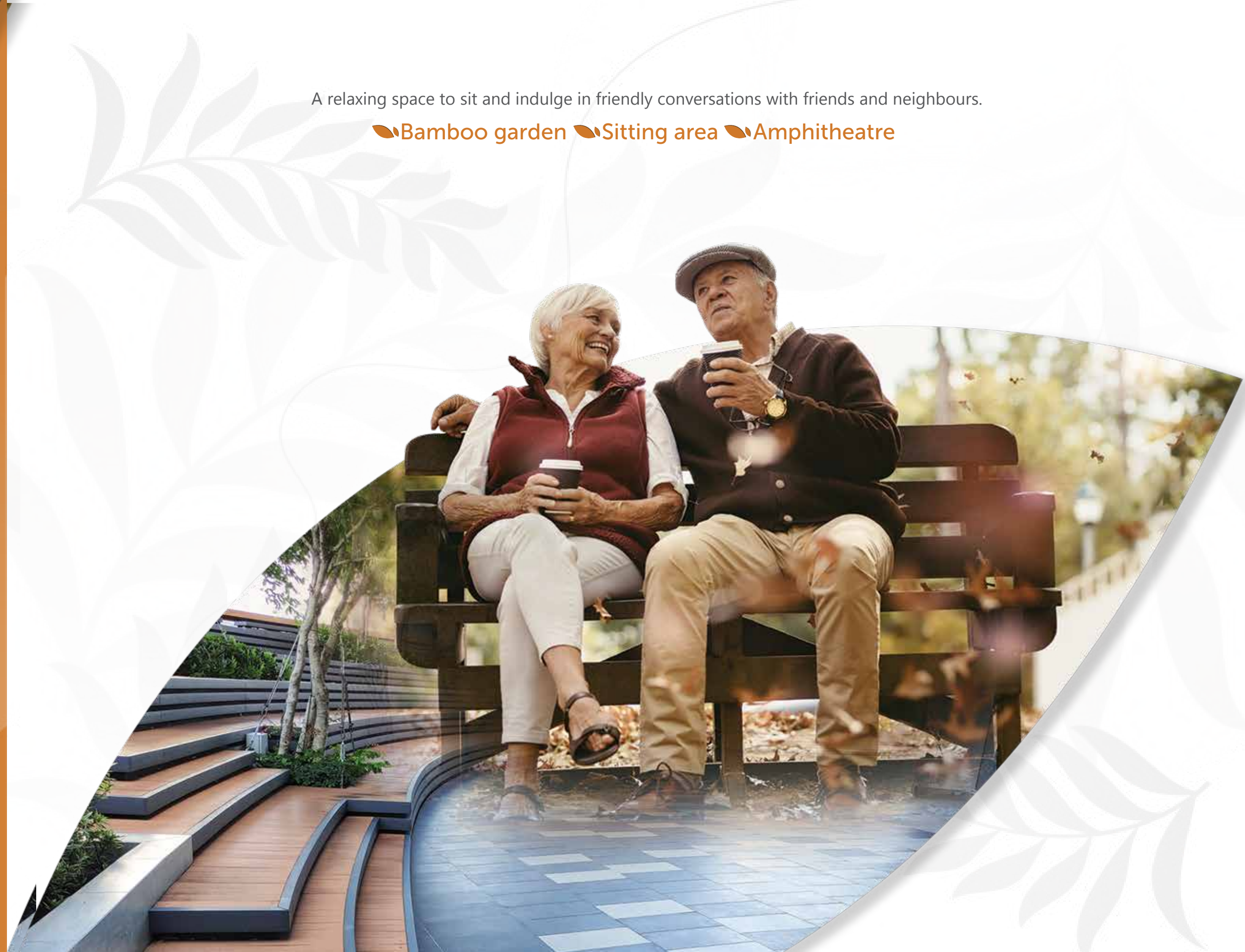
*Dedicated 35000 sq.ft. fitness area on your rooftop*

Keep your heart healthy to stay on top of your health every day. Exercise the way you love it.

- 🍷 Jogging track
- 🍷 Acupressure walkway
- 🍷 Yoga & meditation
- 🍷 Outdoor gym

A relaxing space to sit and indulge in friendly conversations with friends and neighbours.

- 🍷 Bamboo garden
- 🍷 Sitting area
- 🍷 Amphitheatre





*From the dreamland  
into a joyful reality*



### 1<sup>st</sup> Floor Plan

#### Block C

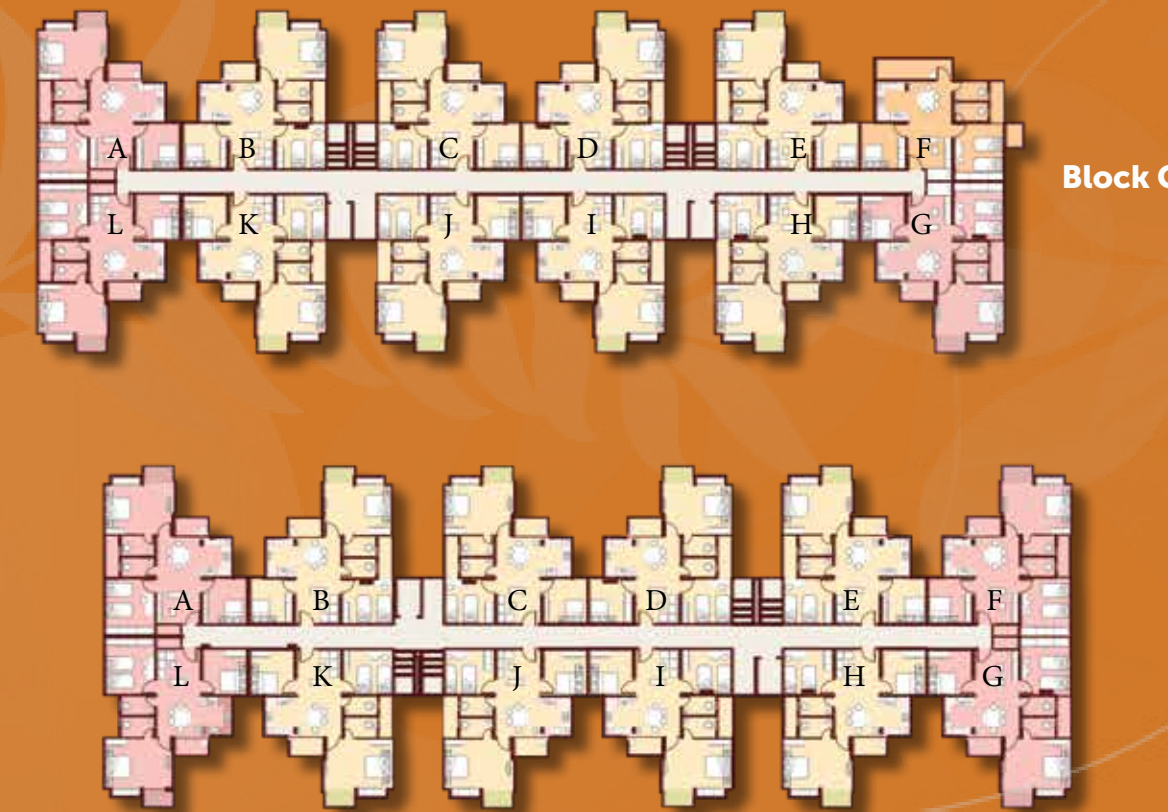
Flat Type	BHK	SBUA	BUA	CA	BA	Terrace
A, G, L	3	1207	905	791	53	279
B, C, D, E, J, K	3	1139	854	745	53	446
F	2	1019	764	605	99	216
H, I	3	1139	854	745	53	279

#### Block B

Flat Type	BHK	SBUA	BUA	CA	BA	Terrace
A, F, G, L	3	1207	905	791	53	279
B, C, H, I	3	1139	854	745	53	279
D, E, J, K	3	1139	854	745	53	446

#### Block A

Flat Type	BHK	SBUA	BUA	CA	BA	Terrace
A, F	3	1139	854	745	53	279
B, C, D, E	3	1139	854	745	53	446



### 2<sup>nd</sup> Floor Plan

#### Block C

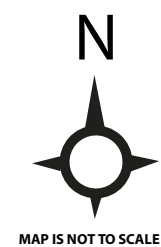
Flat Type	BHK	SBUA	BUA	CA	BA
A, G, L	3	1207	905	791	53
B, C, D, E, H, I, J, K	3	1139	854	745	53
F	2	1019	764	605	99

#### Block B

Flat Type	BHK	SBUA	BUA	CA	BA
A, F, G, L	3	1207	905	791	53
B, C, D, E, H, I, J, K	3	1139	854	745	53

#### Block A

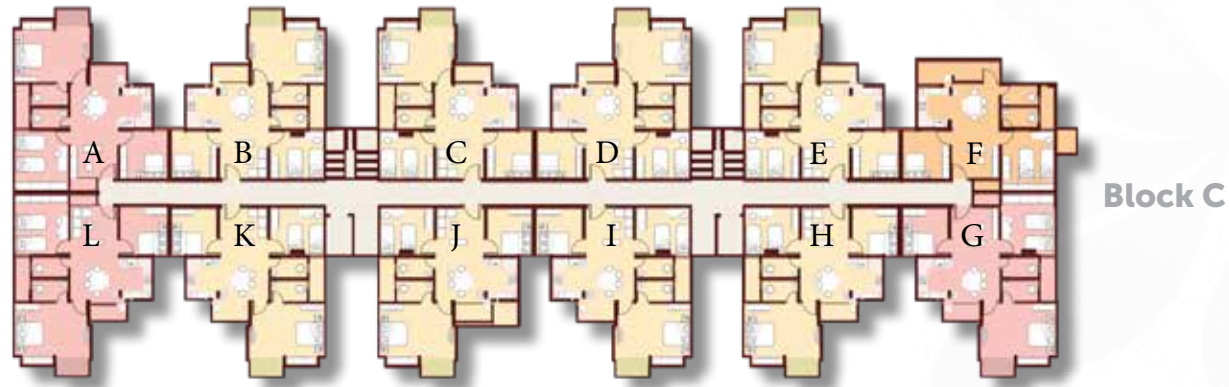
Flat Type	BHK	SBUA	BUA	CA	BA
A, B, E, F	3	1139	854	745	53
C, D	3	1207	905	791	53



MAP IS NOT TO SCALE

Pride The Club

Pride The Club



Block C

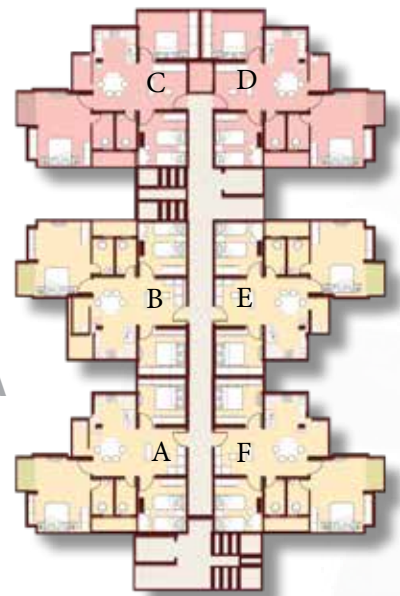
Typical 3<sup>rd</sup>, 5<sup>th</sup>, 6<sup>th</sup>,  
8<sup>th</sup> & 9<sup>th</sup> Floor Plan

Block C					
Flat Type	BHK	SBUA	BUA	CA	BA
A, G, L	3	1207	905	791	53
B, C, D, E, H, I, J, K	3	1139	854	745	53
F	2	1019	605	745	99



Block B

Block B					
Flat Type	BHK	SBUA	BUA	CA	BA
A, F, G, L	3	1207	905	791	53
B, C, D, E, H, I, J, K	3	1139	854	745	53

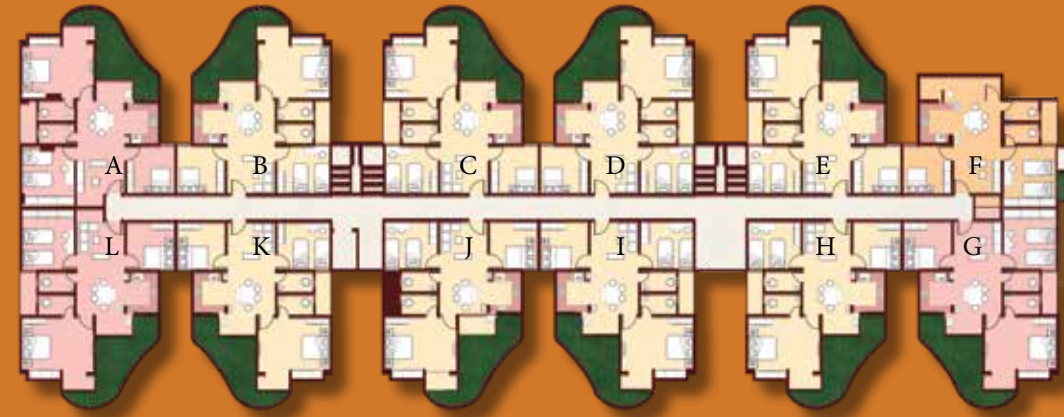


Block A

Block A					
Flat Type	BHK	SBUA	BUA	CA	BA
A, B, E, F	3	1139	854	745	53
C, D	3	1207	905	791	53



MAP IS NOT TO SCALE



Block C

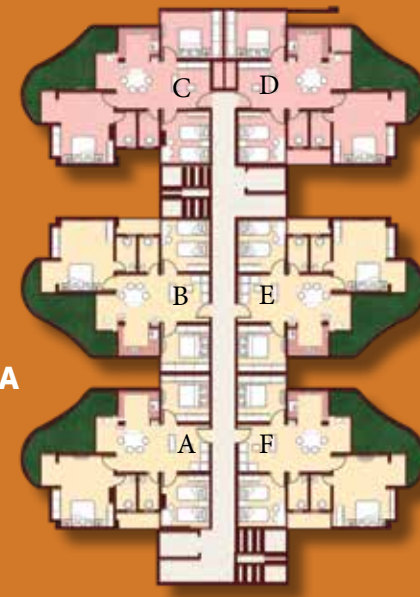
Typical 4<sup>th</sup>, 7<sup>th</sup>, &  
10<sup>th</sup> Floor Plan

Block C						
Flat Type	BHK	SBUA	BUA	CA	BA	Terrace
A, G, L	3	1207	905	791	53	151
B, C, D, E, H, I, J, K	3	1139	854	745	53	151
F	2	1019	764	605	99	24



Block B

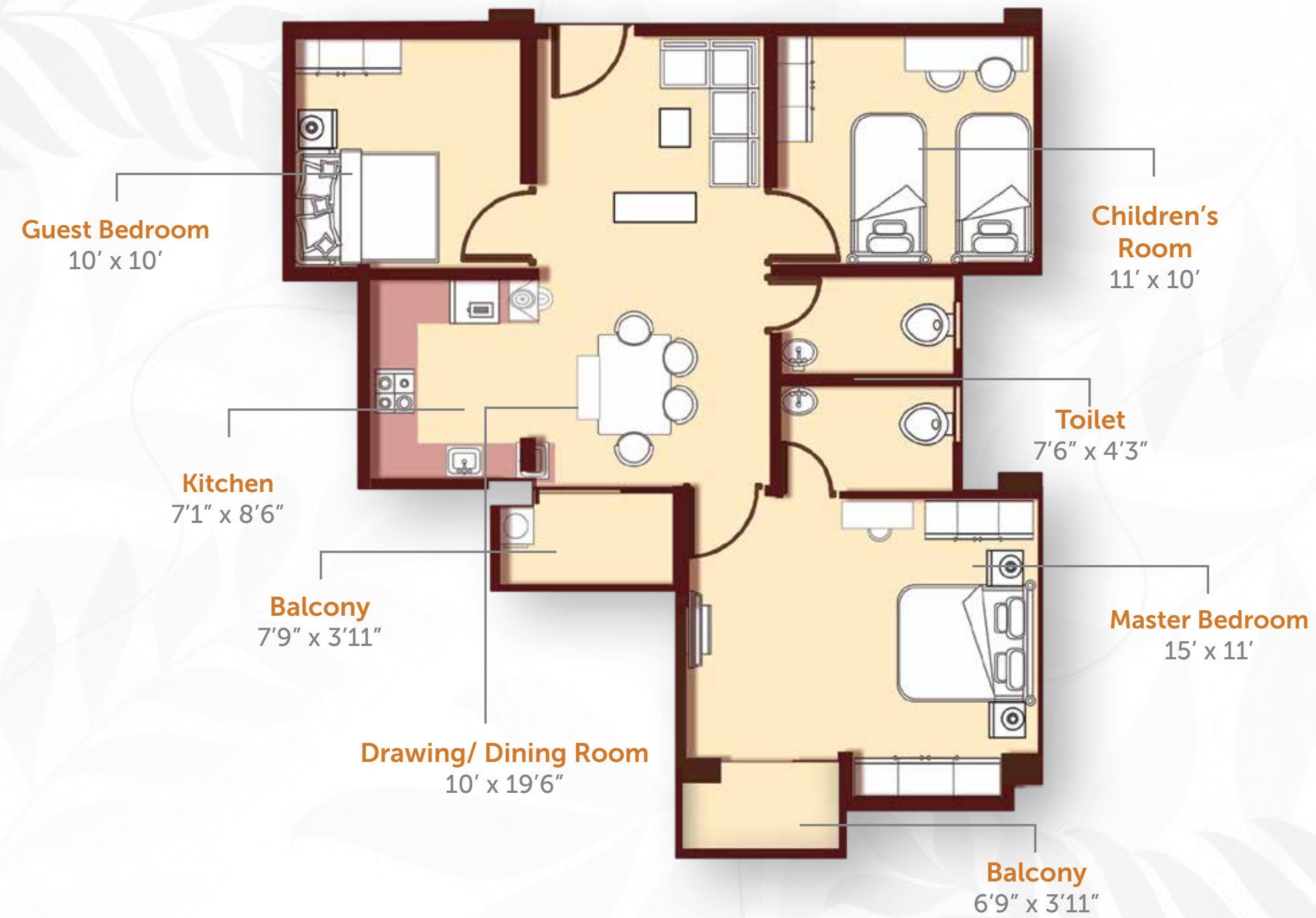
Block B						
Flat Type	BHK	SBUA	BUA	CA	BA	Terrace
A, F, G, L	3	1207	905	791	53	151
B, C, D, E, H, I, J, K	3	1139	854	745	53	151



Block A

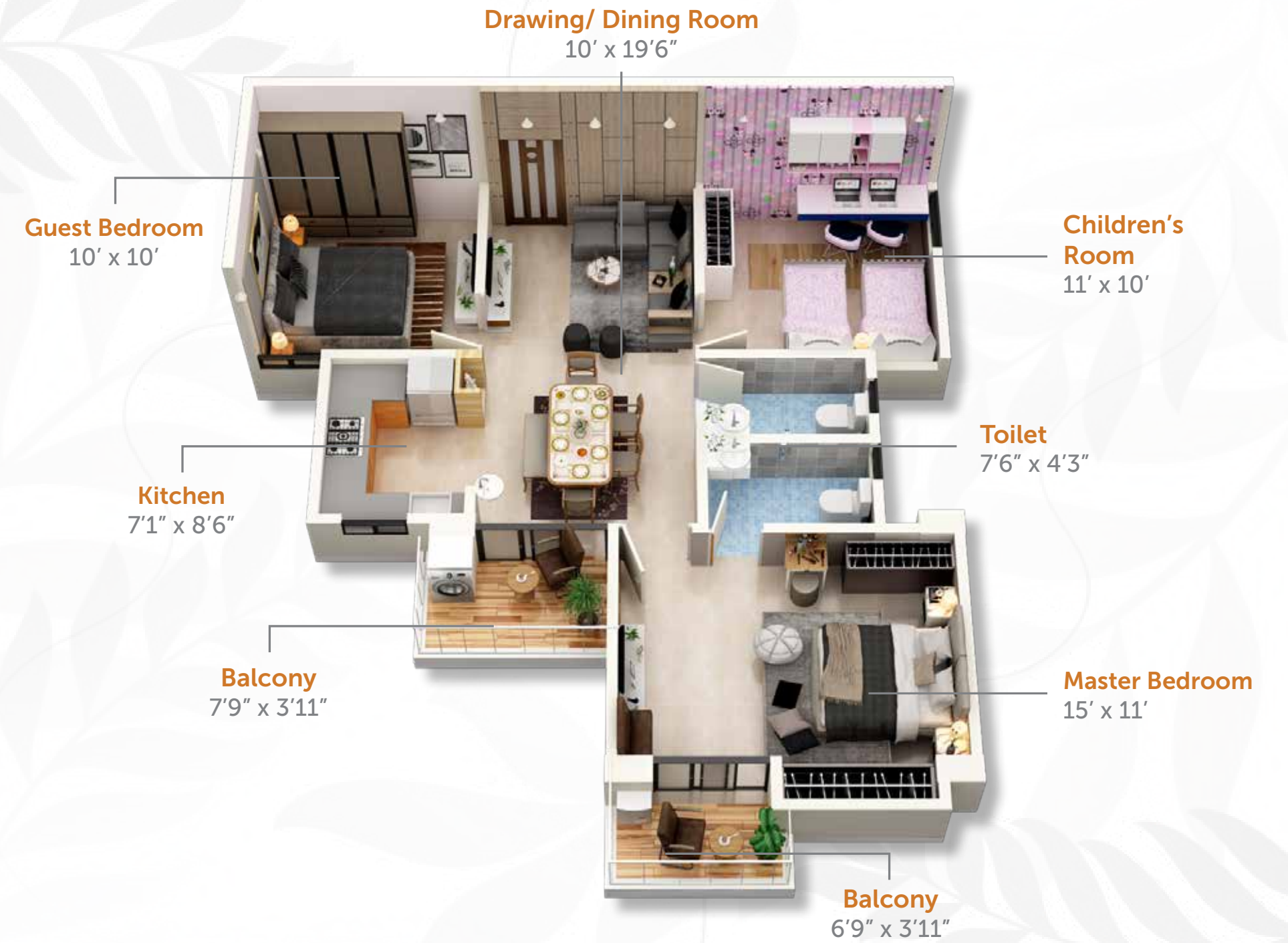
Block A						
Flat Type	BHK	SBUA	BUA	CA	BA	Terrace
C, D	3	1207	905	791	53	151
A, B, E, F	3	1139	854	745	53	151

Typical 2<sup>nd</sup>, 3<sup>rd</sup>, 5<sup>th</sup>, 6<sup>th</sup>, 8<sup>th</sup> & 9<sup>th</sup> Floor



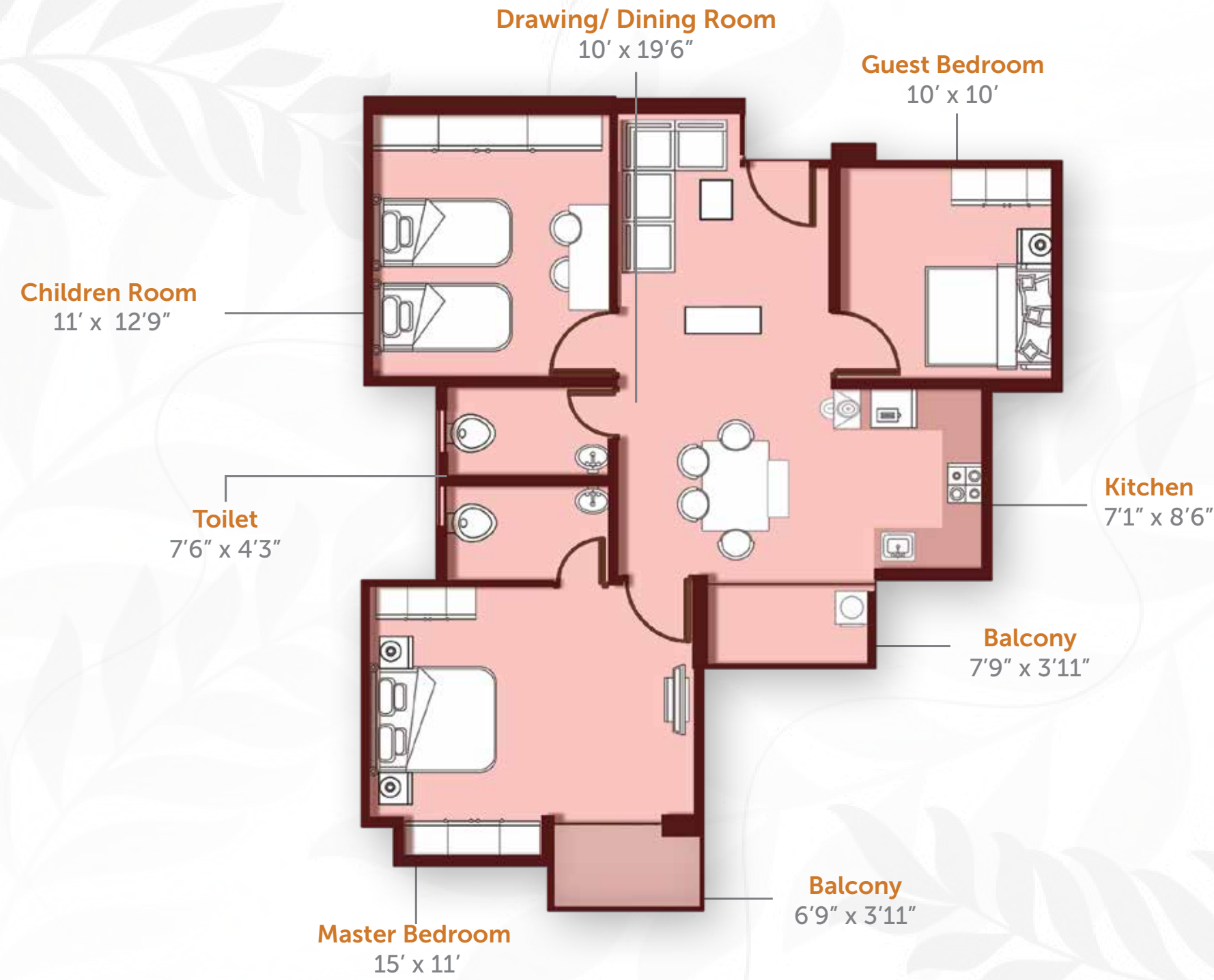
SBUA- 1139 sq.ft.

Typical 2<sup>nd</sup>, 3<sup>rd</sup>, 5<sup>th</sup>, 6<sup>th</sup>, 8<sup>th</sup> & 9<sup>th</sup> Floor



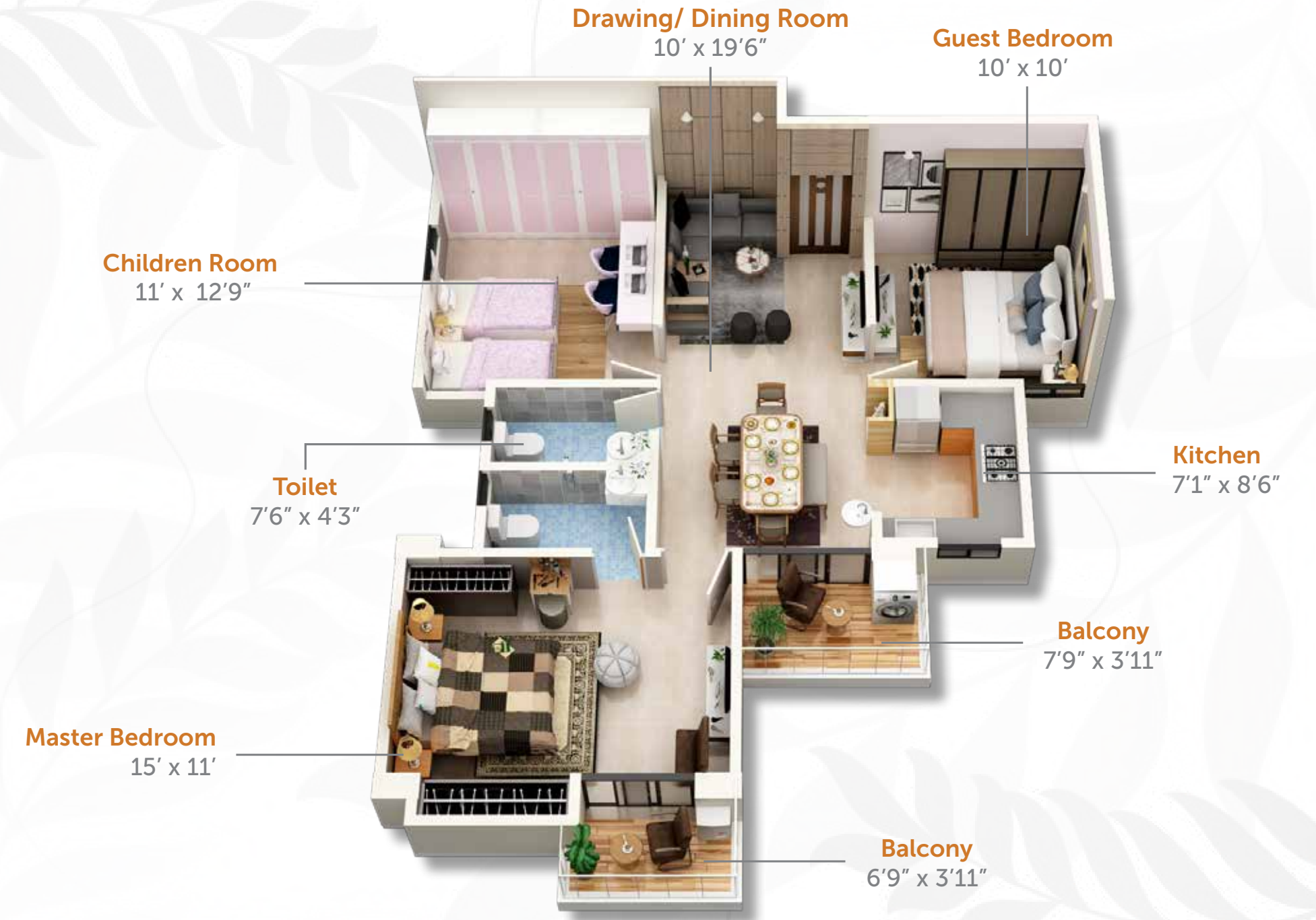
Flat Type	BHK	SBUA	BUA	CA	BA
B	3	1139	854	745	53

Typical 2<sup>nd</sup>, 3<sup>rd</sup>, 5<sup>th</sup>, 6<sup>th</sup>, 8<sup>th</sup> & 9<sup>th</sup> Floor



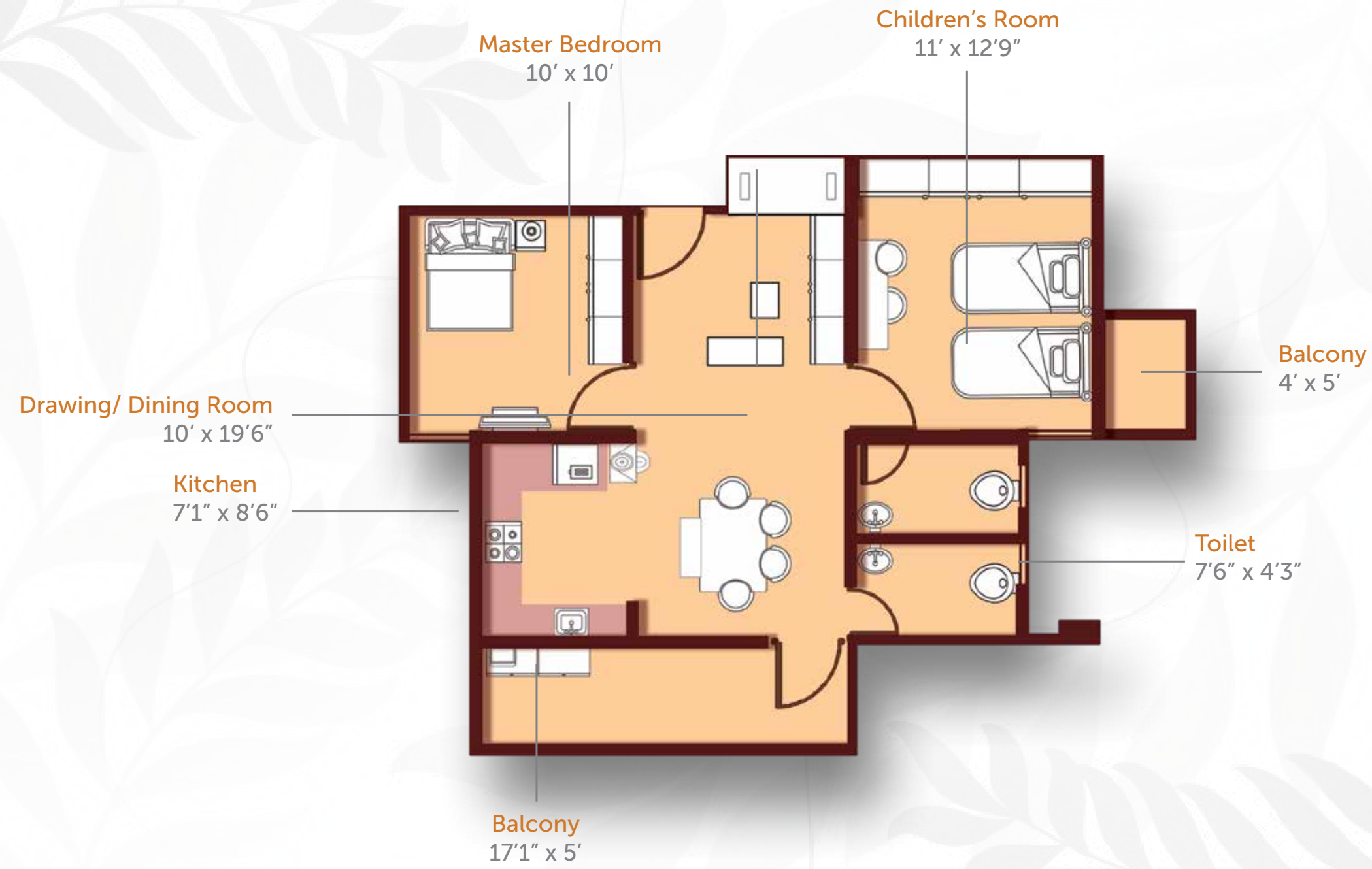
SBUA- 1207 sq.ft.

Typical 2<sup>nd</sup>, 3<sup>rd</sup>, 5<sup>th</sup>, 6<sup>th</sup>, 8<sup>th</sup> & 9<sup>th</sup> Floor



Flat Type	BHK	SBUA	BUA	CA	BA
A	3	1207	905	791	53

**2 BHK Typical 2<sup>nd</sup>, 3<sup>rd</sup>, 5<sup>th</sup>, 6<sup>th</sup>, 8<sup>th</sup> & 9<sup>th</sup> Floor**

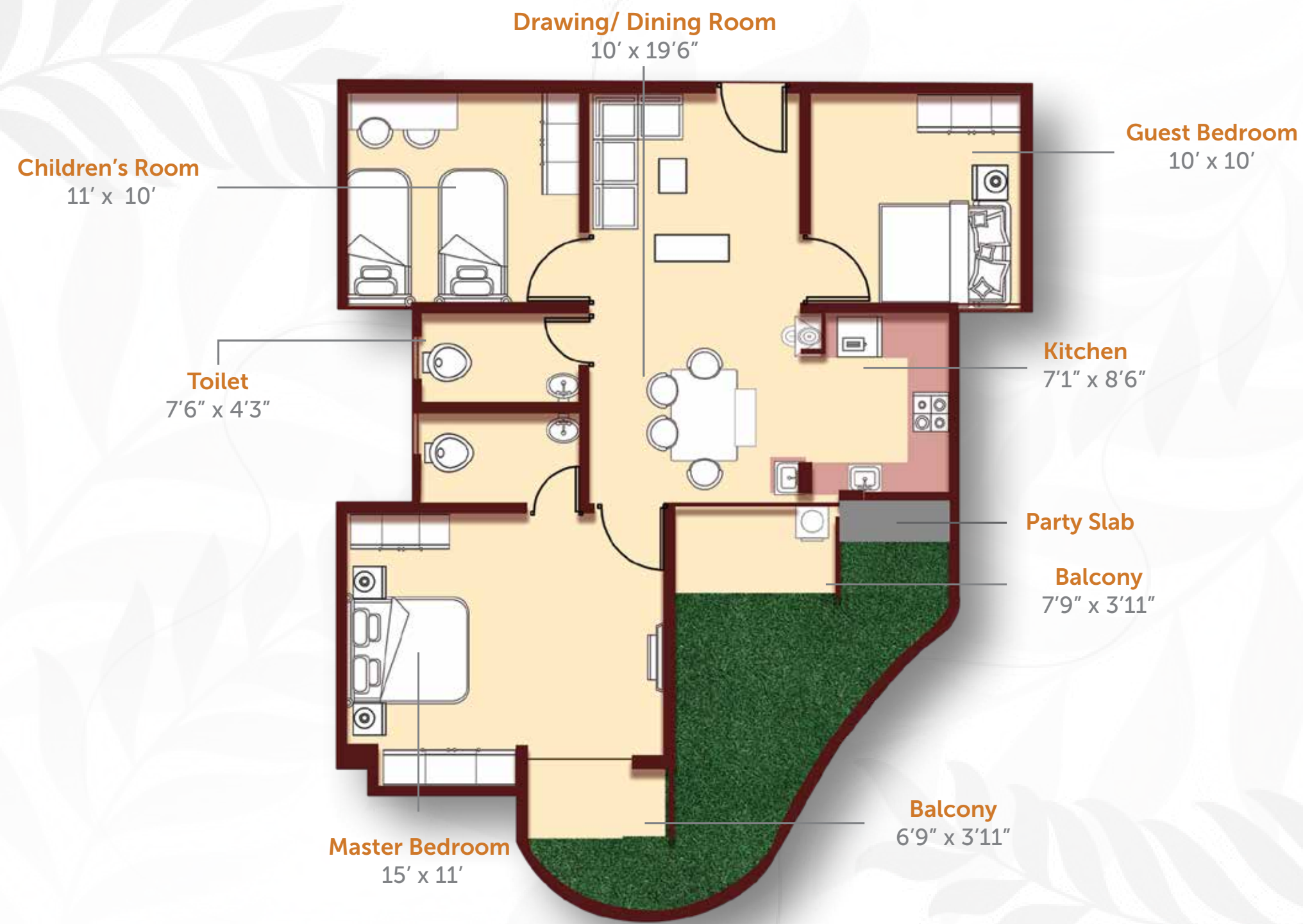


**SBUA- 1019 sq.ft.**



Flat Type	BHK	SBUA	BUA	CA	BA	Terrace
F	2BHK	1019	764	605	99	24

**Garden Balcony Typical 4<sup>th</sup>, 7<sup>th</sup> & 10<sup>th</sup> floor**



**SBUA 1139 sq.ft.**



Flat Type	BHK	SBUA	BUA	CA	BA	Terrace
B	3	1139	854	749	53	151

**Garden Apartment with Party Slab**



SBUA 1139 sq.ft.

Puja Ghar



Jhoola



Fountain

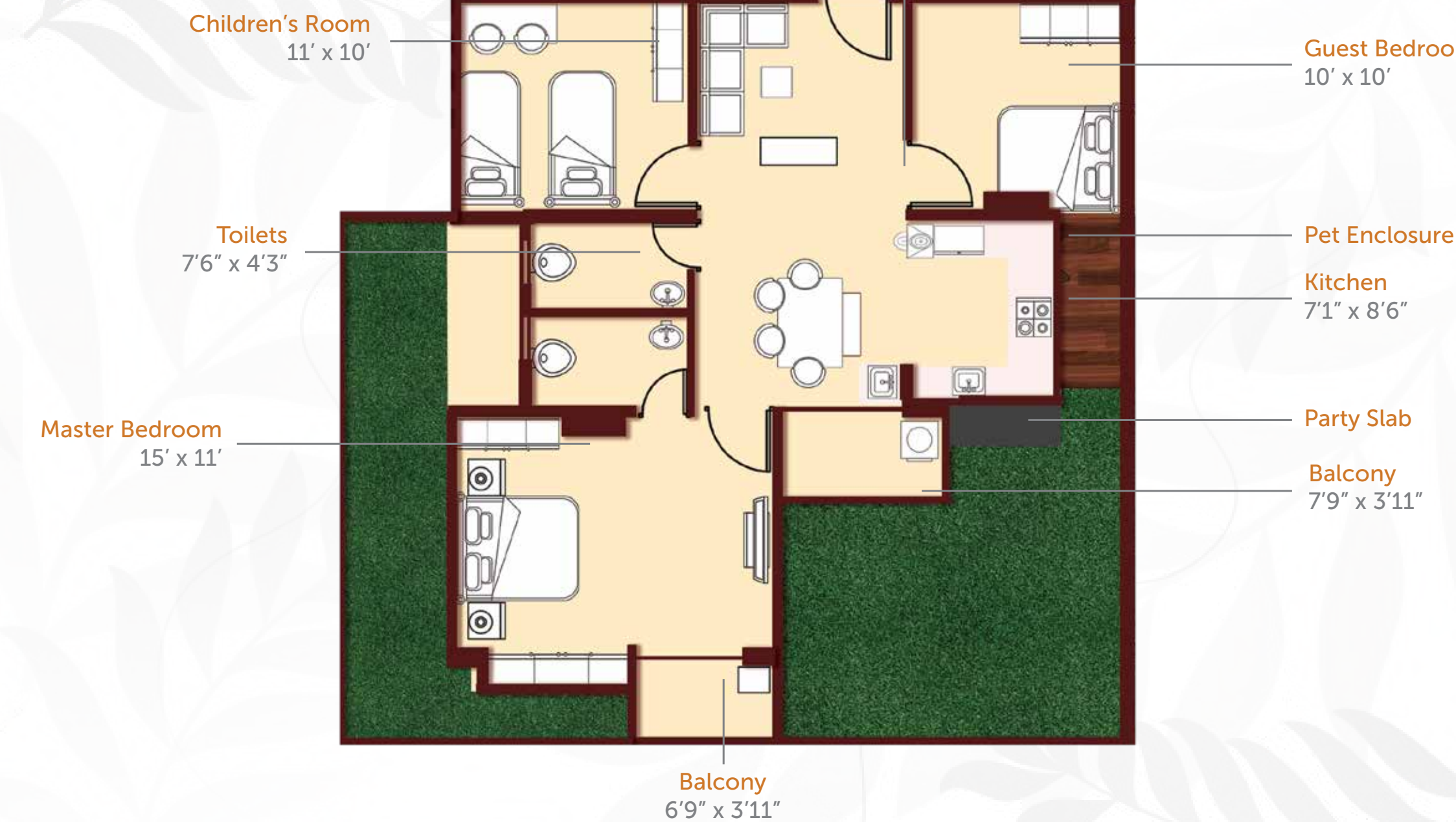


Party Slab



Pet Enclosure

Drawing/ Dining Room 10' x 19'6"



SBUA 1139 sq.ft.

## Semi-furnished Terrace Specifications

- MS pet enclosure with service window
- Frontside railing with brick work (450mm brick work)
- Artificial turf with installation including neat cement finish
- Shera board screen on MS railing
- Waterproofing with two component acrylic cementitious waterproof
- Terrace railing
- Safety grill

\*We will provide semi-furnished specifications.

## Furnished Terrace Specifications

- Granite on stepping stone including base PCC
- Deck plank tiles
- Landscape area lighting
- Water fountain with sculpture (ready-made)
- FRP planter with creeper
- Big FRP planter with plant
- Jhula
- MS pergola
- Outdoor furniture
- Fountain

\*Fully furnished specifications will be provided by third party service providers on chargeable basis.

## Welcome a touch of modernity To your lifestyle

Come to a world differentiated by modernity and sustainability. Every master bedroom looks timeless and elegant. All because of contemporary wooden flooring. 4' X 2' tiles in the hall make the surroundings look classy. The modern shoe rack, kept outside every flat, makes the space tidy and clutter-free. Take off your shoes at ease, and make the floor clean and hygienic.



### Smart amenities:

- Wooden flooring in the master bedroom
- 4' x 2' tiles in the hall
- Shoe rack for each flat in lobby area.



*Make Life*

## **Faster. Easier. Smarter**

FTTH (Fibre to the home) lets you enjoy the luxury of watching LIVE cricket matches on high-speed HD YouTube. Balancing your work and family responsibilities has become easier. You will love the convenience of working from home more often. Setting up conference calls and inviting multiple members through FTTH will ease your work style. Pride is an address where, through the Central DTH, you can have multiple connections on a single dish within the same building.

### **Smart amenities:**

- FTTH (Fibre To The Home)
- Central DTH



*Smarten your lifestyle*

## **With smart parking entrance (RFID) & auto power backup**

Pride makes you digital-ready. The smart parking systems allow IoT-based solutions equipped with sensors that send real-time data for parking availability. Thanks to this advanced technology that not only provides easy access to parking spots but also saves fuel, time, and money. Experience a smooth parking experience. DG backup up to 1 KW is installed in all flats.



### **Smart amenities:**

- Smart parking entrance
- Digi power backup in all flats up to 1 KW



## *Unlock Next-Level Safety*

### **With Smart Lock Systems**

Own a smart lifestyle blessed by advanced technology. Pride ensures digital lock systems for every flat to enhance your security. Experience the convenience of keyless entry to your home. Feel proud when your guests complement you by saying "Wow, so smart"!

#### **Smart amenities:**

- Digital lock



# Making communications

## More convenient

Integrated intercom system ensures top-notch safety. You don't have to let an unknown person into your flat when you have an intercom. You can verify the authentication by calling the person. Through smart card access, you can safely enter the clubhouse.



### Smart amenities:

- Integrated Intercom Facilities
- Club entry



## *Dedicated Party Slabs*

### **On the Private Terrace Ignite Joy**

At Pride, we have made your life more relaxing. The party slab on the private terrace and garden apartment sets the mood for Saturday night parties. Enjoy a barbecue on the sturdy slab. Pride makes your party times grand. What's more? You can also use this party slab area as a utility counter!

#### **Smart amenities:**

- Party slab on the private terrace & garden apartment

# Specifications

- 1. Structure:** R.C.C framed with earthquake resisting structure. AAC Block Wall/Red Brick.
- 2. Kitchen:** Slab top to be finished in Granite and Claddings with Ceramic tiles upto two feet above counter. Stainless steel sink of reputed brand. Aquaguard power points, provisions for fitting kitchen related electrical gadgets.
- 3. Windows:** Sliding Aluminium /UPVC windows
- 4. Elevator:** Provision of passenger/stretcher lift for each block, make – Thyssenkrupp/ Kone/Otis or equivalent.
- 5. Building:** 3 blocks of G+10 consisting of residential apartments.
- 6. Water:** Adequate storage of water in the underground & overhead reservoir with iron removal plant.
- 7. Fire Safety:** Equipped with alarm / fighting devices / extinguishers and others as per norms. A large fire fighting water reservoir as per norms.
- 8. Plumbing:** Concealed high-quality plumbing lines with UPVC/CPVC or equivalent pipe and related fittings.
- 9. Bathrooms:** All floors will have anti-skid tiles and walls with standard tiles upto 7 feet height. CP & sanitary fittings will be of superior quality of make Jaquar Essco/Hindware/Parryware/ Cera/Kohler or equivalent.



- 10. Doors & Chowkhats:** All the chowkhats made of Wood Polymer Composite (WPC) or wood. All doors are flush doors.
- 11. Flooring:** Master bedroom will have wooden flooring and other rooms will have vitrified tiles. Staircase and lobbies will be finished with Kota Stone/Marble/Tile as specified by the architect.
- 12. Electrical Facilities:** Provision for AC in all bedrooms, lights, fan and TV points (hall room, master bedroom & guest room) with adequate extra plug points with modular switches (Clipsal, MK, Crabtree or equivalent), Electrical Circuits with individual MCB's distribution panel boxes connected to main panel boards, Geyser points in all bathrooms, Exhaust fan points in all bathrooms and kitchen/ one chimney hole at kitchen. Concealed copper wiring - Polycab/Finolex/Mescab or equivalent. DG set for power backup in all common areas and 1KVA power back per flat. Self operated individual prepaid electrical meter.
- 13. Balconies:** Balconies having finished in vitrified tiles of appropriate shade.
- 14. Exterior Wall Finish:** Exterior wall finished with putty & exterior type emulsion paint to withstand all weather conditions/texture paint.
- 15. Security:** A fully secured complex with boundary walls. Entry to be facilitated with sophisticated intercom connections. CCTV monitoring to provide perpetual surveillance of the ground floor area covering the entry of lift & staircase.
- 16. Interior Wall Finish:** Inside wall finished with wall putty.
- 17. Hardware:** Ornamented with quality product from reputed brand.
- 18. Shoe Rack:** Shoe rack for each flat in lobby area.



School		College	
Army Public School	3.7 Kms	B.R.M. GOVT. LAW COLLEGE	3.5 Kms
St. Francis De Sales Higher Secondary School	2.5 Kms	Karmashree Hiteswar Saikia College	4.3 Kms
EuroKids Pre-School Borbari	3.4 Kms	NERIM	6.0 Kms
St.Rose Nursery School	2.0 Kms	Rahman Hospitals School of Nursing	3.1 Kms
The Scholar School	900 Mtr		
Guwahati Public School	5.6 Kms		

Hospital		Petrol Pump	
GNRC Sixmile	4.7 Kms	Indian Oil - VIP Road	3.3 Kms
Pratiksha Hospitals	4.9 Kms	Indian Oil - VIP Road	2.3 Kms
Urban State Dispensary	450 Mtr		
Rahman Hospital	5.1 Kms	Cinema Hall	
Downtown Hospital	5.8 Kms	Gold Digital Cinema - LG	4.2 Kms
Sun Valley Hospital	5.7 Kms	Tower Narengi Tinali	4.2 Kms
Agile Hospital	5.8 Kms		

Bank		Police Station	
SBI Satgaon	1.5 Kms	Satgaon Police Station	2.3 Kms
PNB Bank Pathar Quarry	3.3 Kms	Army Camp	
SBI - Bank & ATM Panjabari Road	3.7 Kms	Satgaon Army Camp	2 Kms
Canara Bank Panjabari Road	4.5 Kms	Car Wash	
SBI - VIP Road	3.9 Kms	Car Wash Centre	1.7 Kms
Bank Of India - Narengi Branch	2.7 Kms	AK Car Wash Centre	900 Mtr
UCO Bank Bonda Branch	2.4 Kms		



# Insight to the Developer

	<p><b>Protech Regency</b> (Mar 06 - Mar 08) Residential Hengrabari, Guwahati Flats - 32</p>		<p><b>Protech Park</b> (Apr 07 - Apr 11) Residential Hengrabari, Guwahati Flats - 126</p>		<p><b>Protech View</b> (May 08 - May 11) Residential Hengrabari, Guwahati Flats - 21</p>
	<p><b>Protech Pelican</b> (Sep 08 - Jun 12) Residential Japorigog, Guwahati Flats - 25</p>		<p><b>Protech Center</b> (Sep 08 - Mar 13) Commercial Ganeshguri, Guwahati Area 81,798 sq. ft.</p>		<p><b>Protech Pritam</b> (Dec 09 - May 13) Residential Athgaon, Guwahati Flats - 24</p>
	<p><b>Protech Bimla</b> (Dec 10 - Apr 13) Residential Panjabari, Guwahati Flats - 25</p>		<p><b>Protech Heritage</b> (May 11 - Aug 13) Residential Geetanagar, Guwahati Flats - 47</p>		<p><b>Protech Harkanam</b> (Jan 12 - Aur 13) Residential Noonmati, Guwahati Flats - 48</p>
	<p><b>Protech Pearl</b> (Jan 14 - Dec 16) Residential G.S. Road, Guwahati Flats - 42</p>		<p><b>Protech Tara Hira</b> (Mar 16 - Apr 19) Residential A.K. Azad Road, Guwahati Flats - 21</p>		<p><b>Protech Tulip</b> (Mar 16 - Apr 19) Residential Borsojai, Guwahati Flats - 130</p>

	<p><b>Protech Galaxy</b> (Jan 18 - July 21) Residential Bhetapara, Guwahati Flats - 138</p>		<p><b>Protech Bongara</b> (Feb 18 - Feb 19) Commercial Bongara, Guwahati Warehouse Area - 1,33,275 sq. ft.</p>		<p><b>Protech Akansha</b> (Jan 20 - April 23) Residential Noonmati, Guwahati Flats - 103</p>
	<p><b>Protech Green</b> (Aug 20 - May 23) Residential Panjabari, Guwahati Flats - 138</p>		<p><b>Protech Paradise</b> (Aug 20 - Ongoing) Residential Bhagaduttapur, Guwahati Flats - 164</p>		<p><b>Protech Prime</b> (Jan 21 - Ongoing) Residential Bhagaduttapur, Guwahati Flats - 128</p>
	<p><b>Protech Changsari</b> (Jan 21 - Ongoing) Commercial Changsari, Guwahati Warehouse Area - 1,66,520 sq. ft.</p>		<p><b>Protech Dawn</b> (Dec 20 - April 23) Commercial G.S. Road Rukminigaon, Guwahati Area - 16,574 sq. ft.</p>		<p><b>Protech Tarun Nagar</b> (Jan 21 - Ongoing) Residential Tarun Nagar, Guwahati Flats - 270</p>
	<p><b>Protech Dharapur</b> (Jan 22 - ongoing) Residential Palasbari Road, Garal, Dharapur, Guwahati Flats - 212</p>	<p>A pioneer in real estate development, Protech Group based in Guwahati has over 17 years of industry experience. Having designed and developed 21 projects (including residential, commercial and warehouse), Protech Group is a name synonymous with trust.</p>			



## **PRIDE REALTY**

Protech Centre, 6th Floor, 604 Protech Centre,  
G.S. Road, Guwahati, Kamrup Metropolitan, Assam, 781006  
+91 98540-47000  
info@protechgroup.in  
protechgroup.in

Site Address  
Birkuchi No. 2, Panjabari Rd, Near Satgaon PHC,  
Guwahati, Assam 781026