

A PROJECT BY:
RAM
DEVELOPERS

Architect :
SCALE
ASSOCIATE
ENGINEERS - ARCHITECTS
SPACE MAKER | INTERIOR DESIGNER

Structural
dolmen
CONSULTANTS LLP

365 DAYS LIVE WITH NATURE

અપોદ્યા Bunglows

Scan for Location



SITE ADDRESS :

Nr. Prarthna Homes, B/h. Chitrakut Farm, Singarva, New Vastral, Singarva, Ahmedabad-382418.

 **95587 65055**

RERA REG. NO. : PR/GJ/AHMEDABAD/AHMEDABAD CITY/00000/0000000/000000
www.gujrera.gujarat.gov.in

4 BHK | LUXURIOUS BUNGLOWS
MASTER PIECES



અયોધ્યા Bunglows

FEATURES

WE ARE PROVIDING FEATURES THAT TRULY ADVANTAGEOUS IN TERMS OF YOUR COMFORT AND CONVENIENCE.



SECURITY SYSTEM



MAIN GATE



WATER SUPPLY



CCTV SURVEILLANCE



STREET LIGHT



PARKING SPACE



LIMITED BUNGALOWS



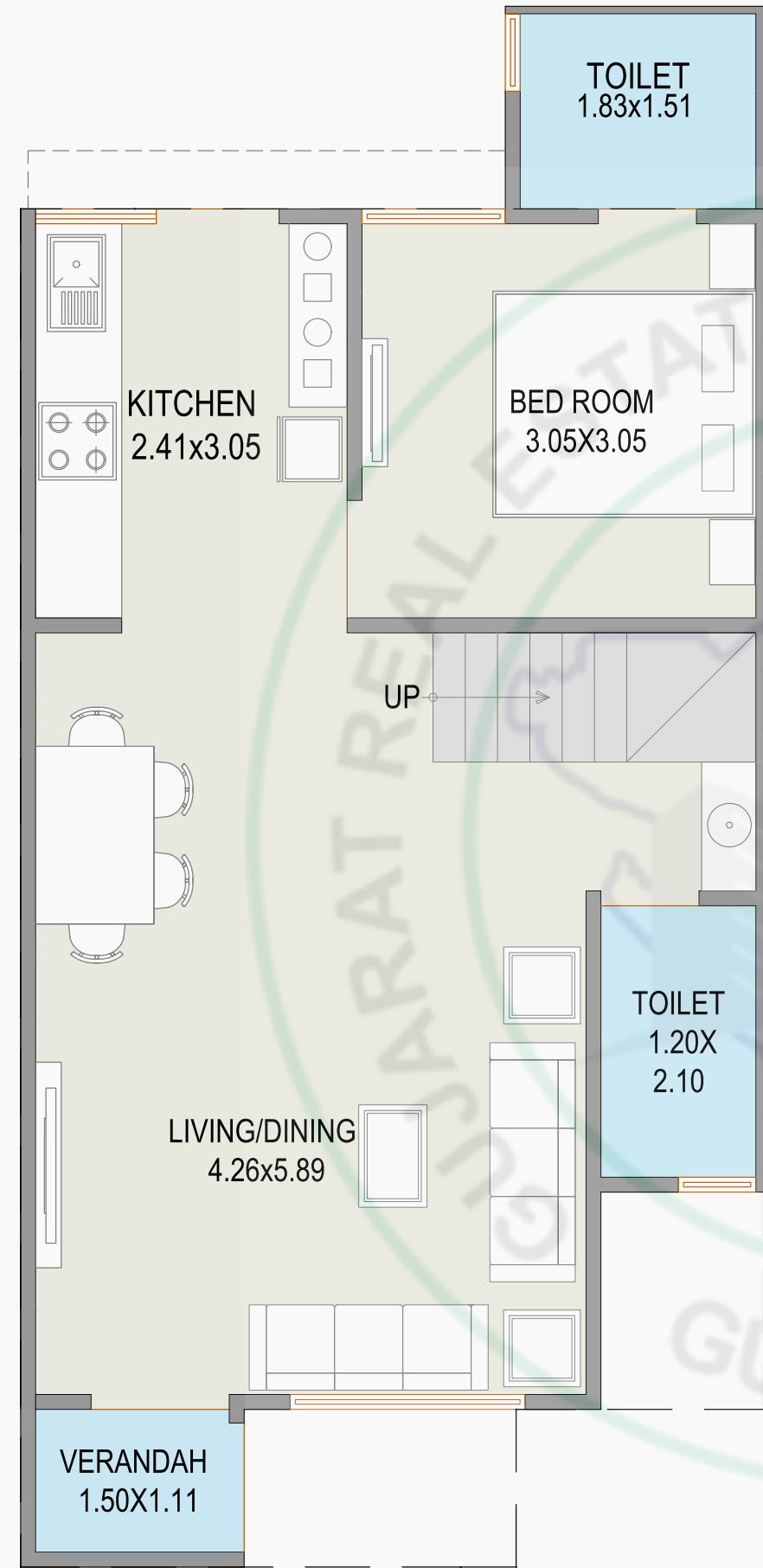
LAYOUT PLAN



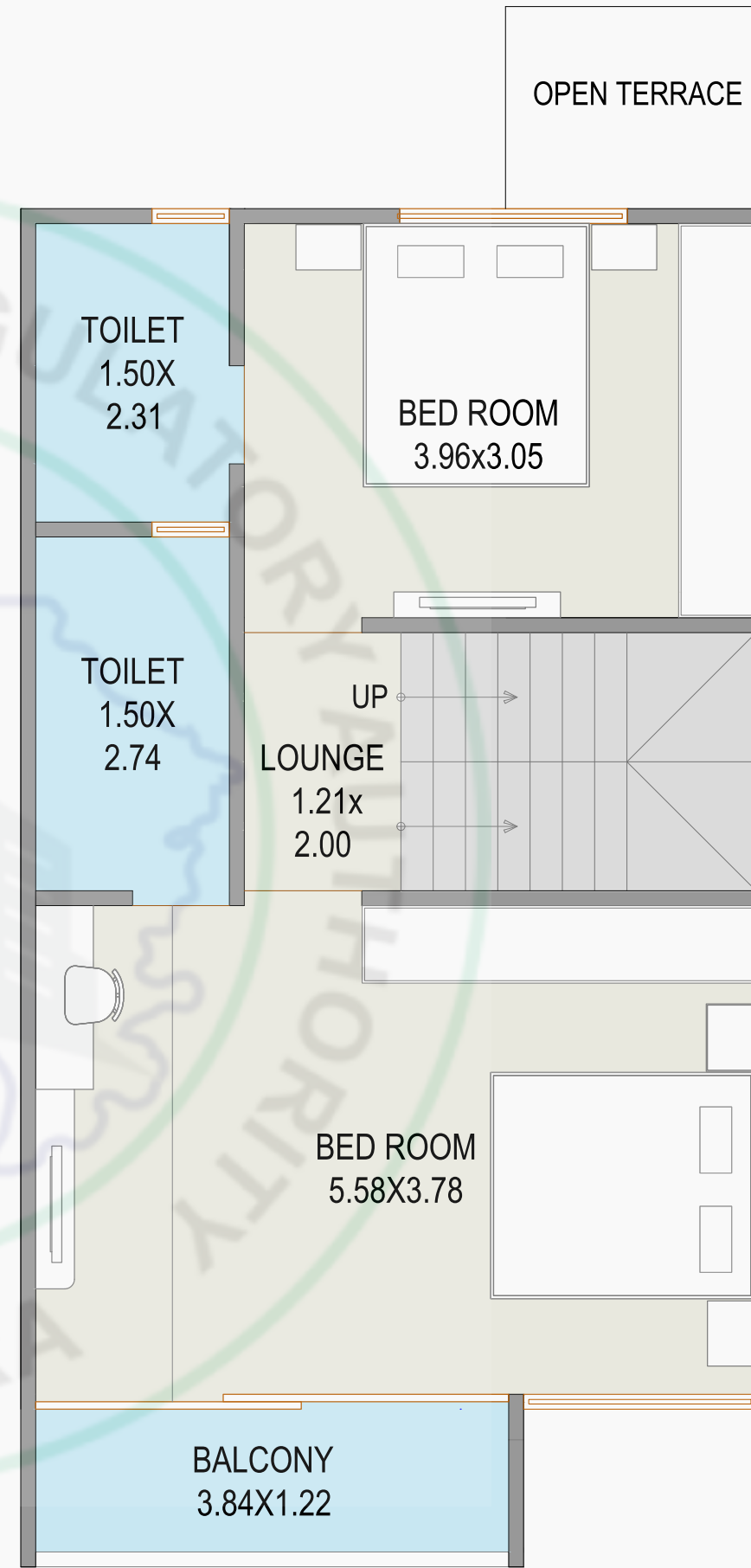
अयोध्या Bunglows



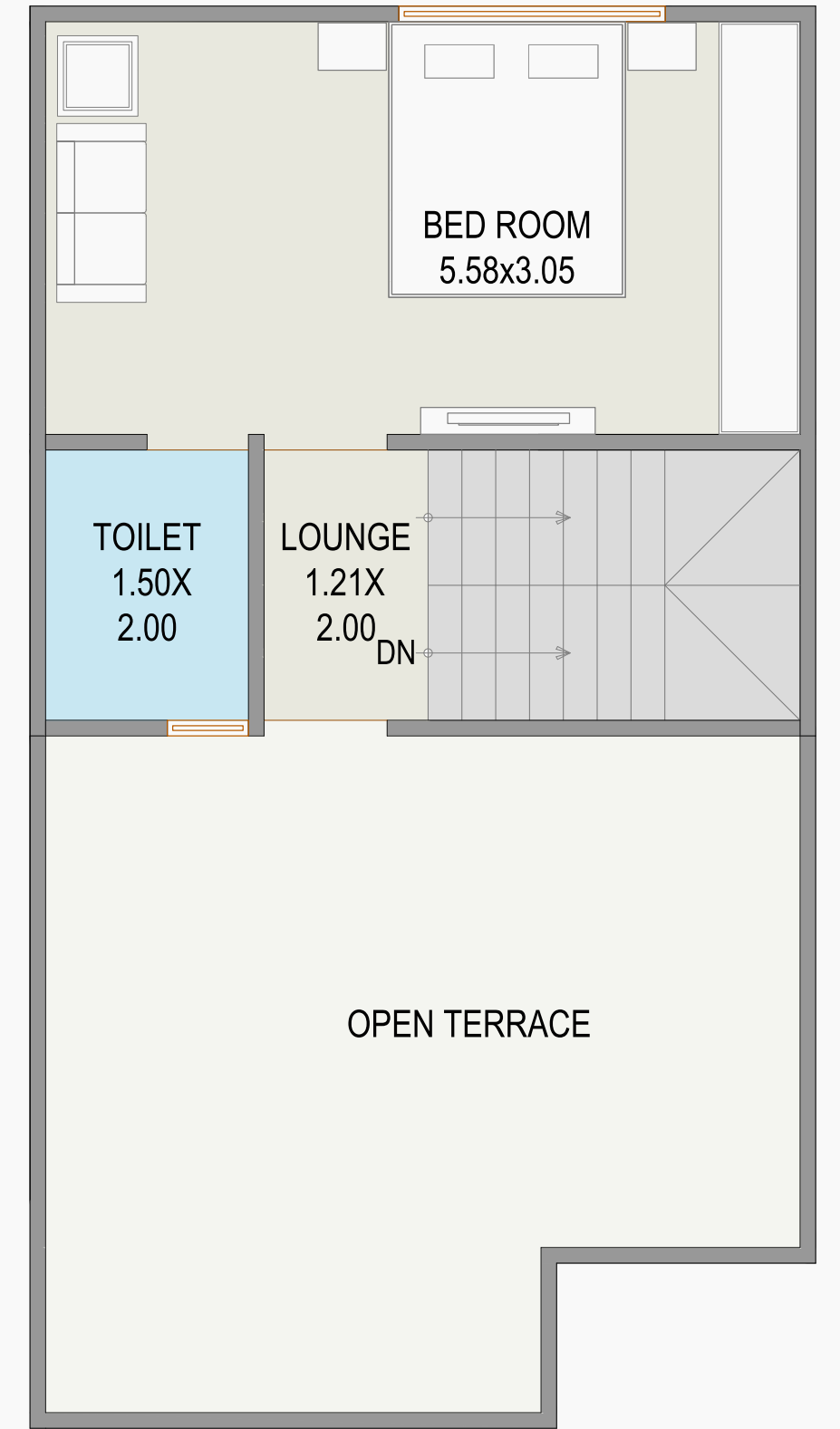
GROUND FLOOR PLAN



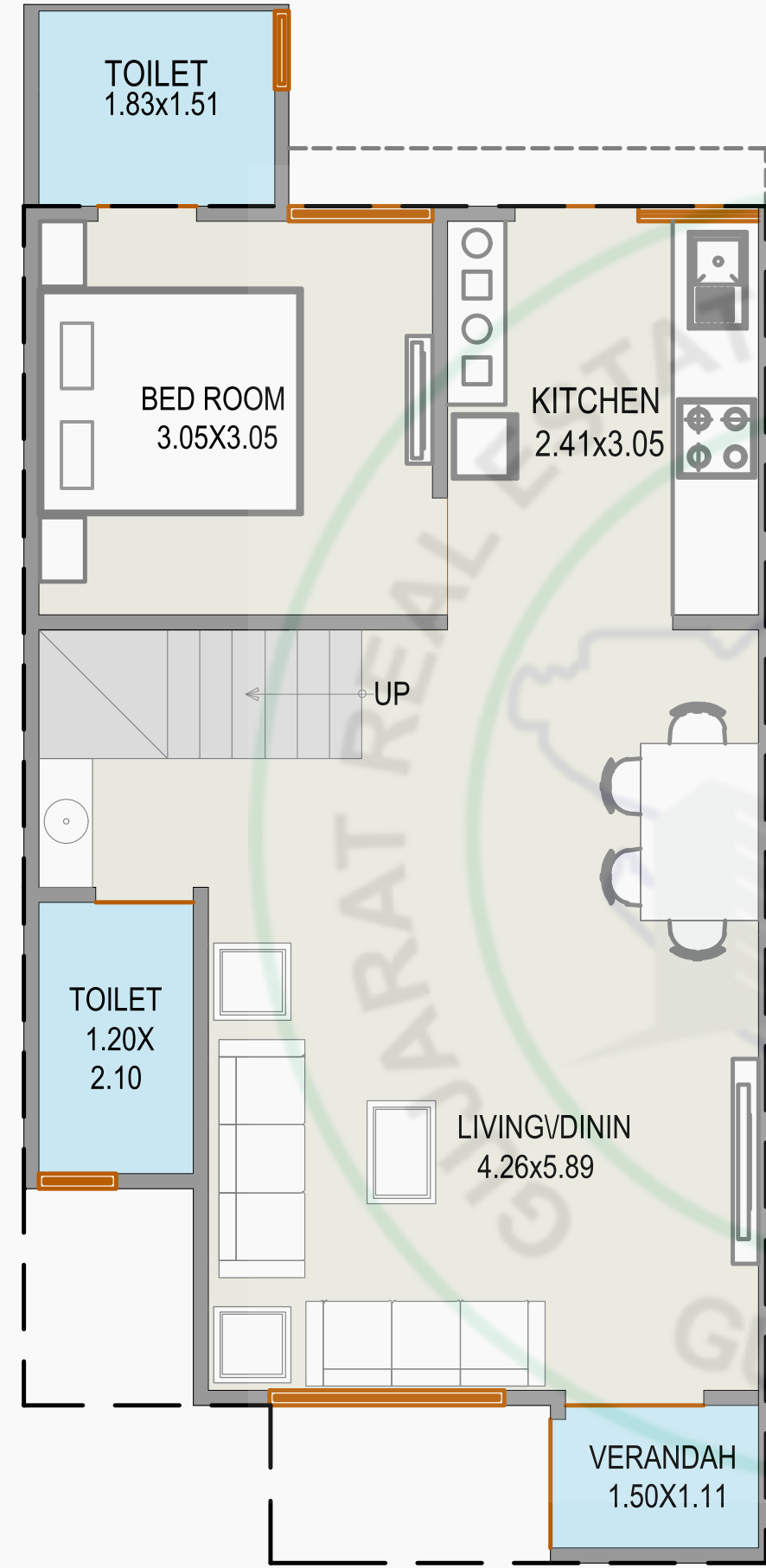
FIRST FLOOR PLAN



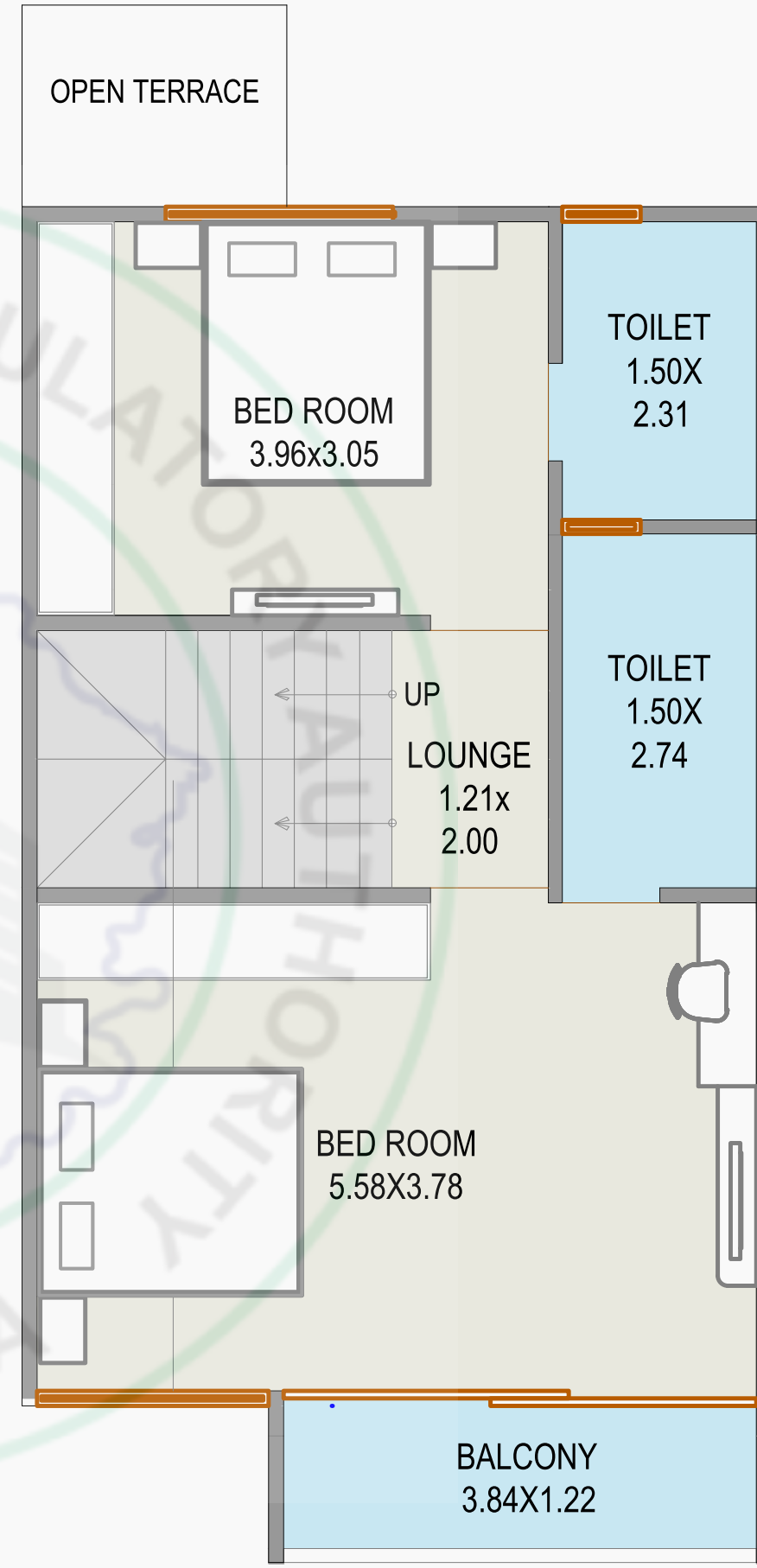
SECOND FLOOR PLAN



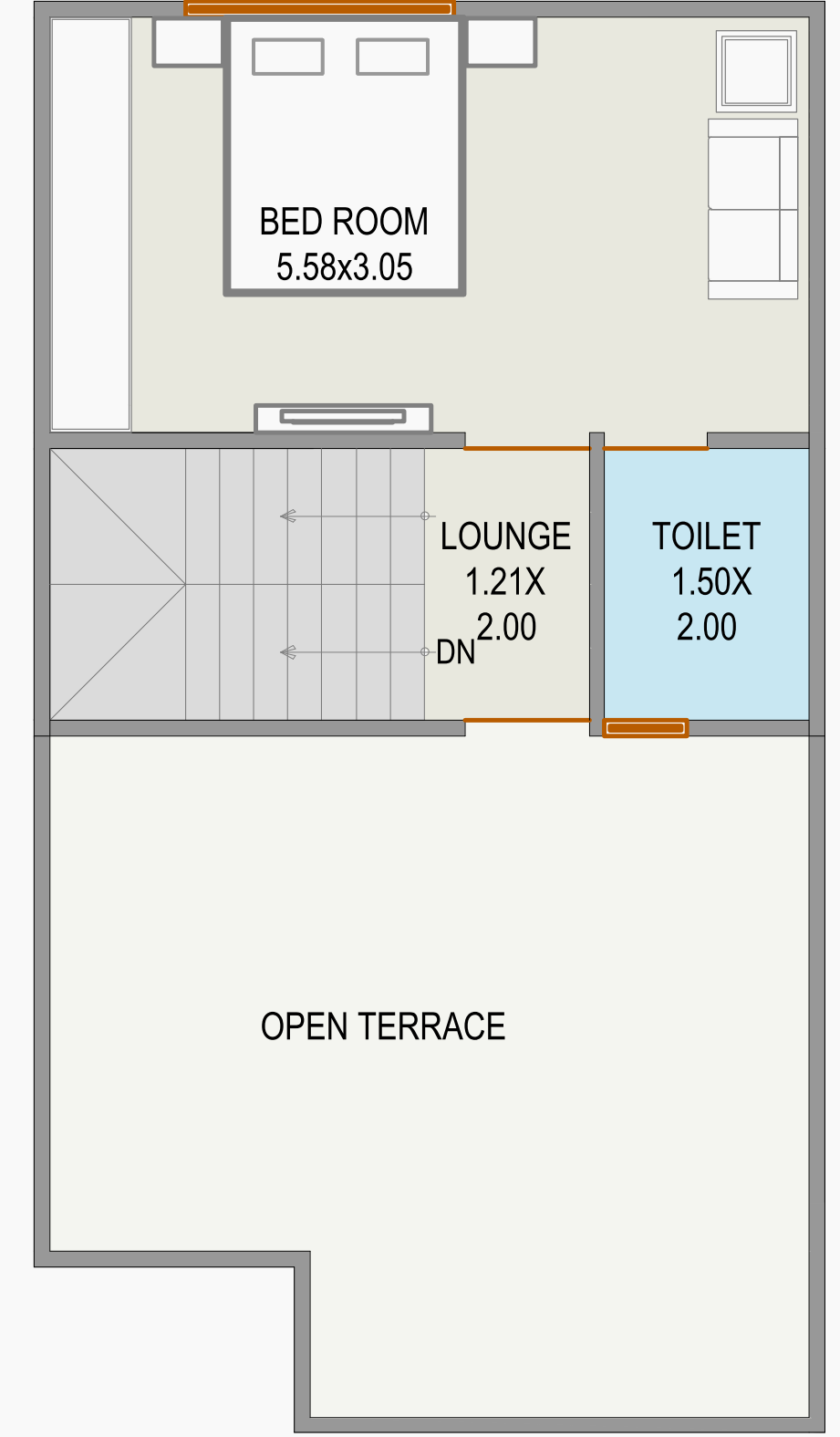
GROUND FLOOR PLAN



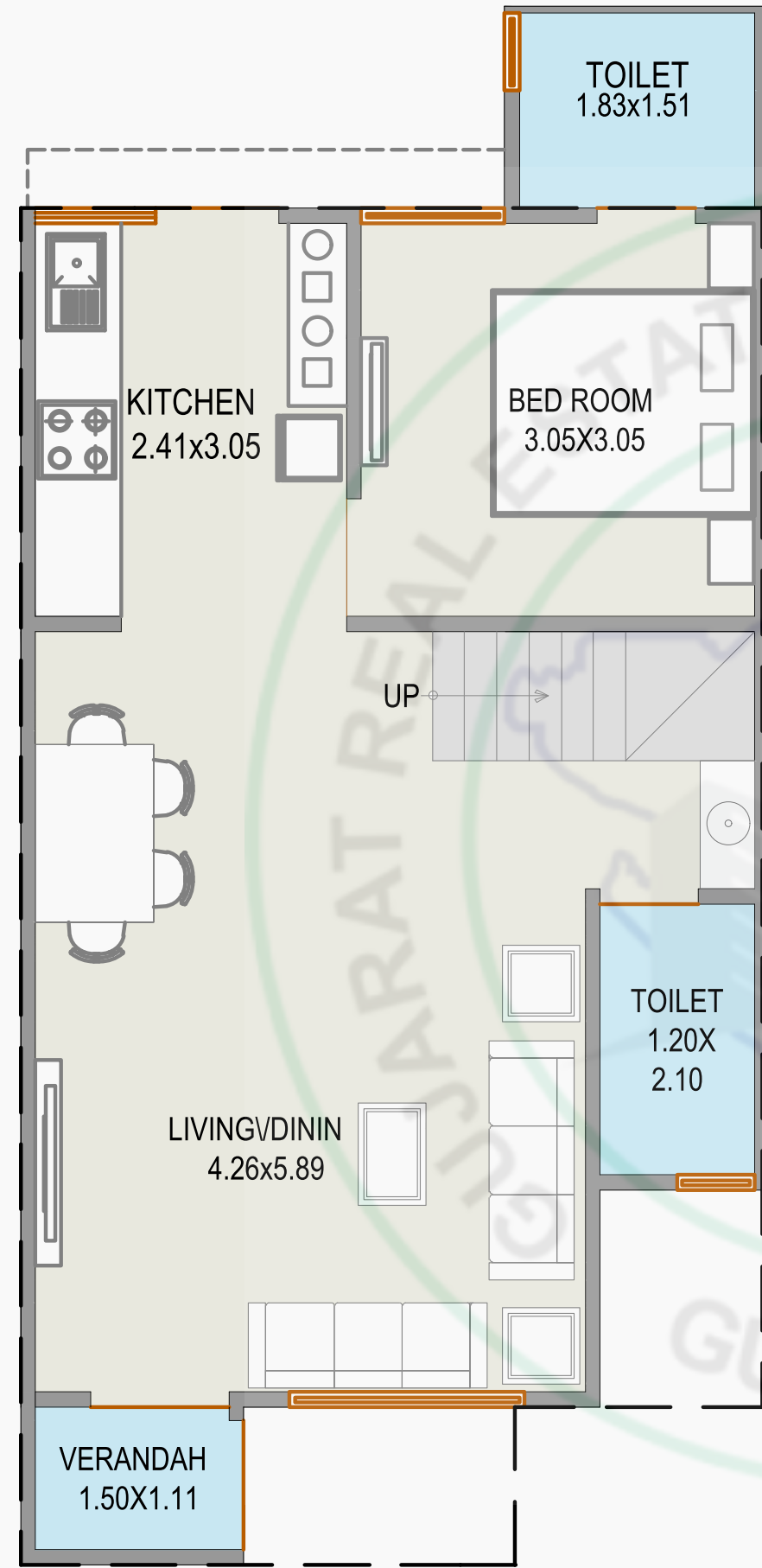
FIRST FLOOR PLAN



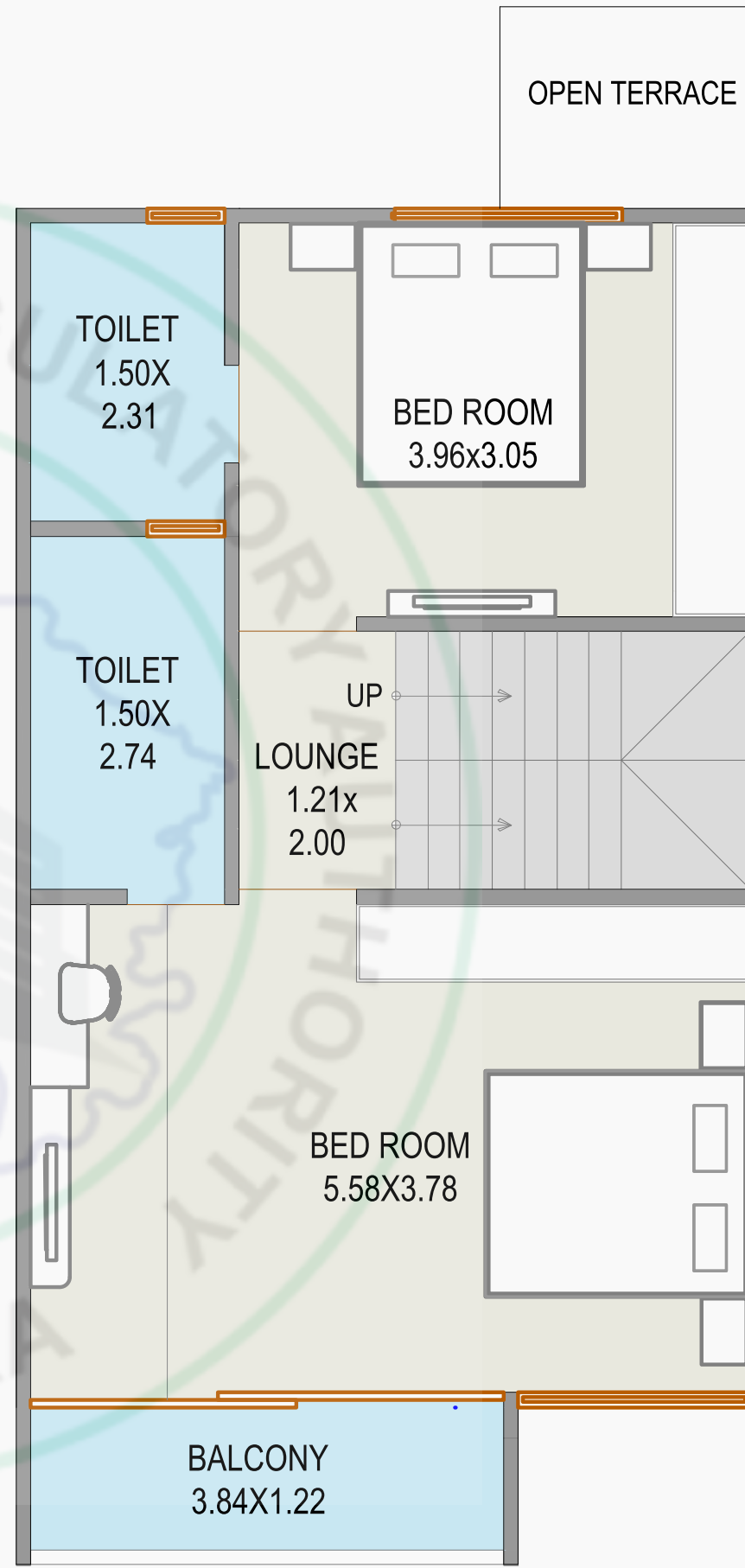
SECOND FLOOR PLAN



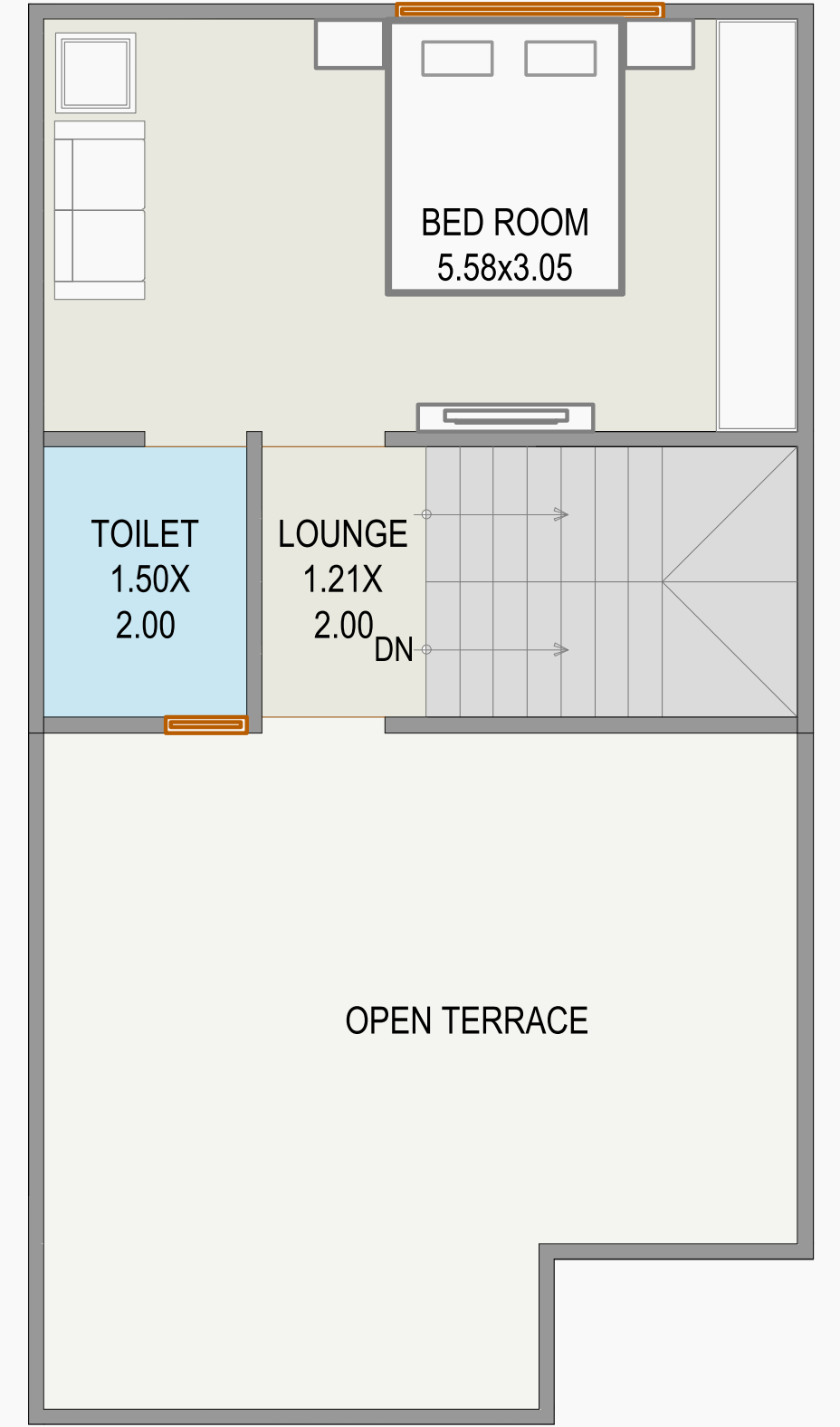
GROUND FLOOR PLAN



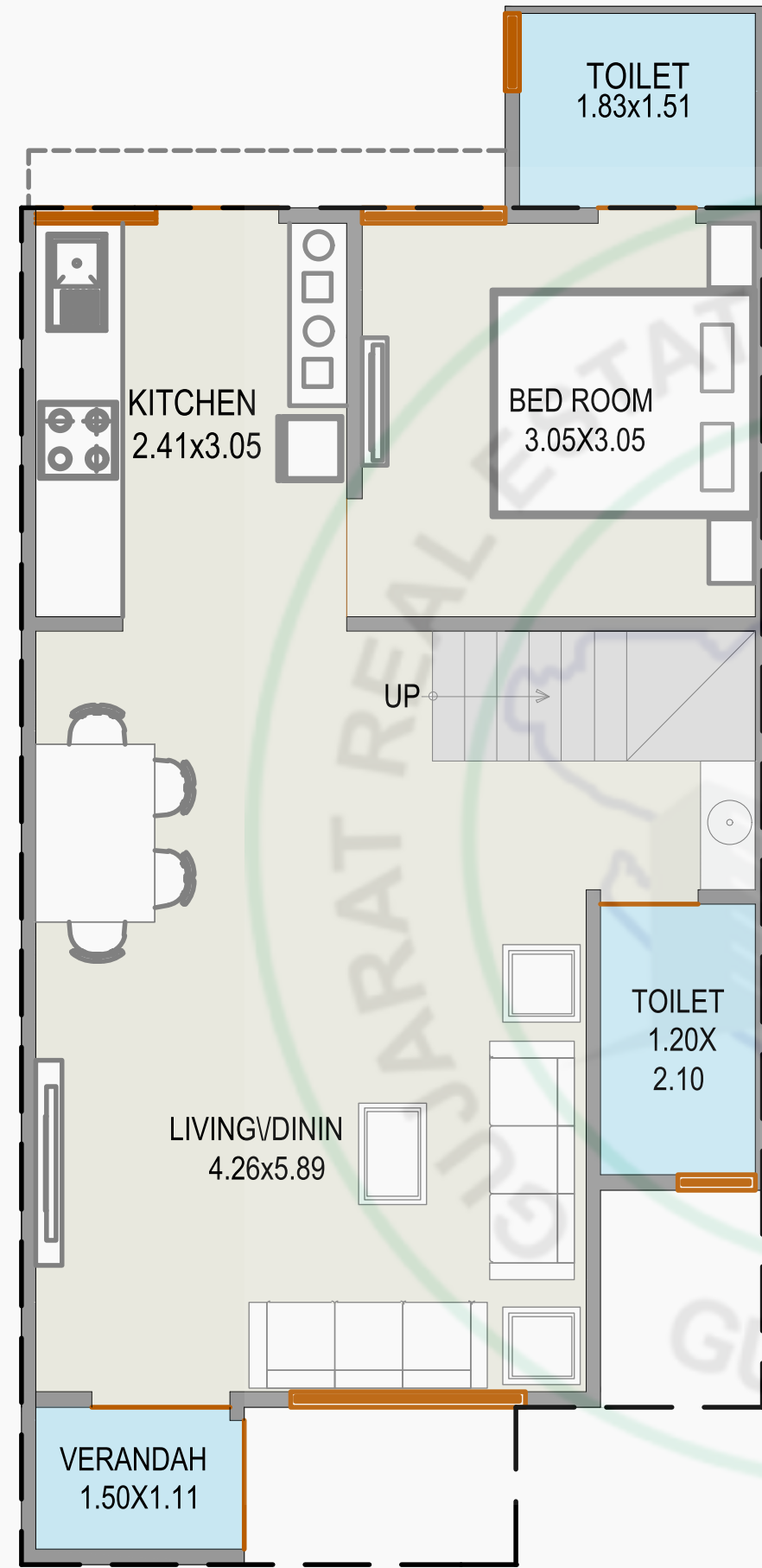
FIRST FLOOR PLAN



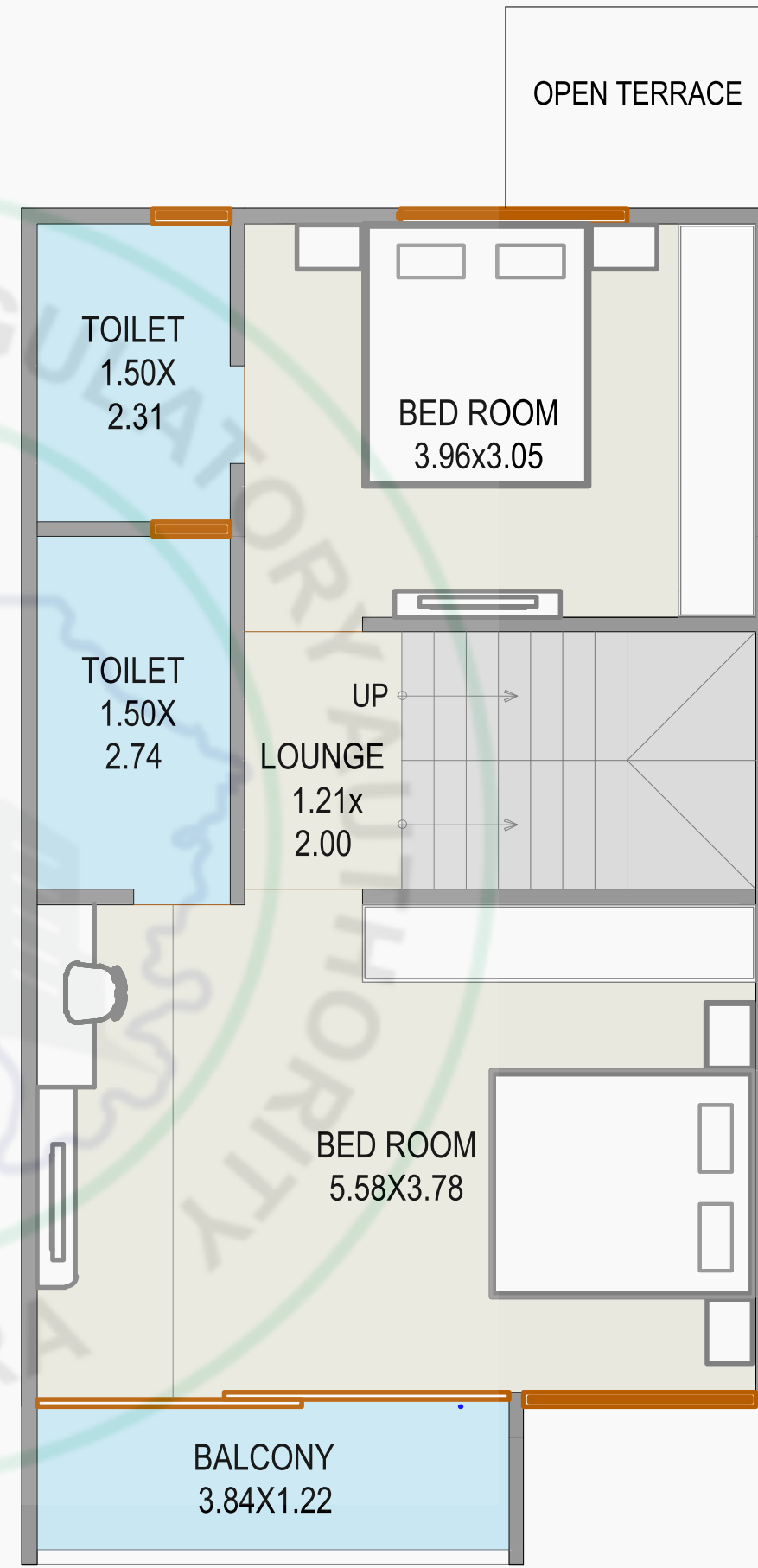
SECOND FLOOR PLAN



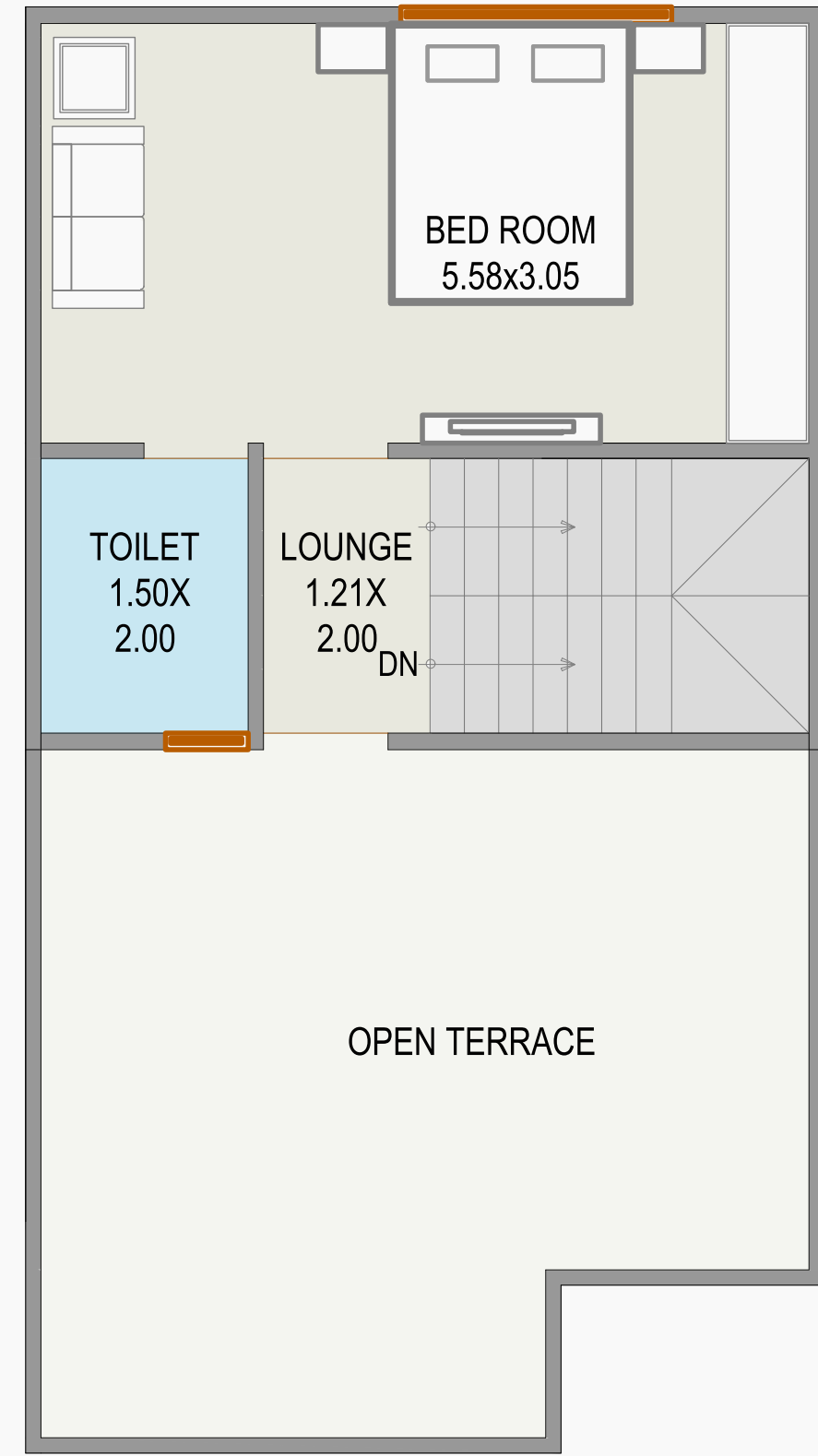
GROUND FLOOR PLAN



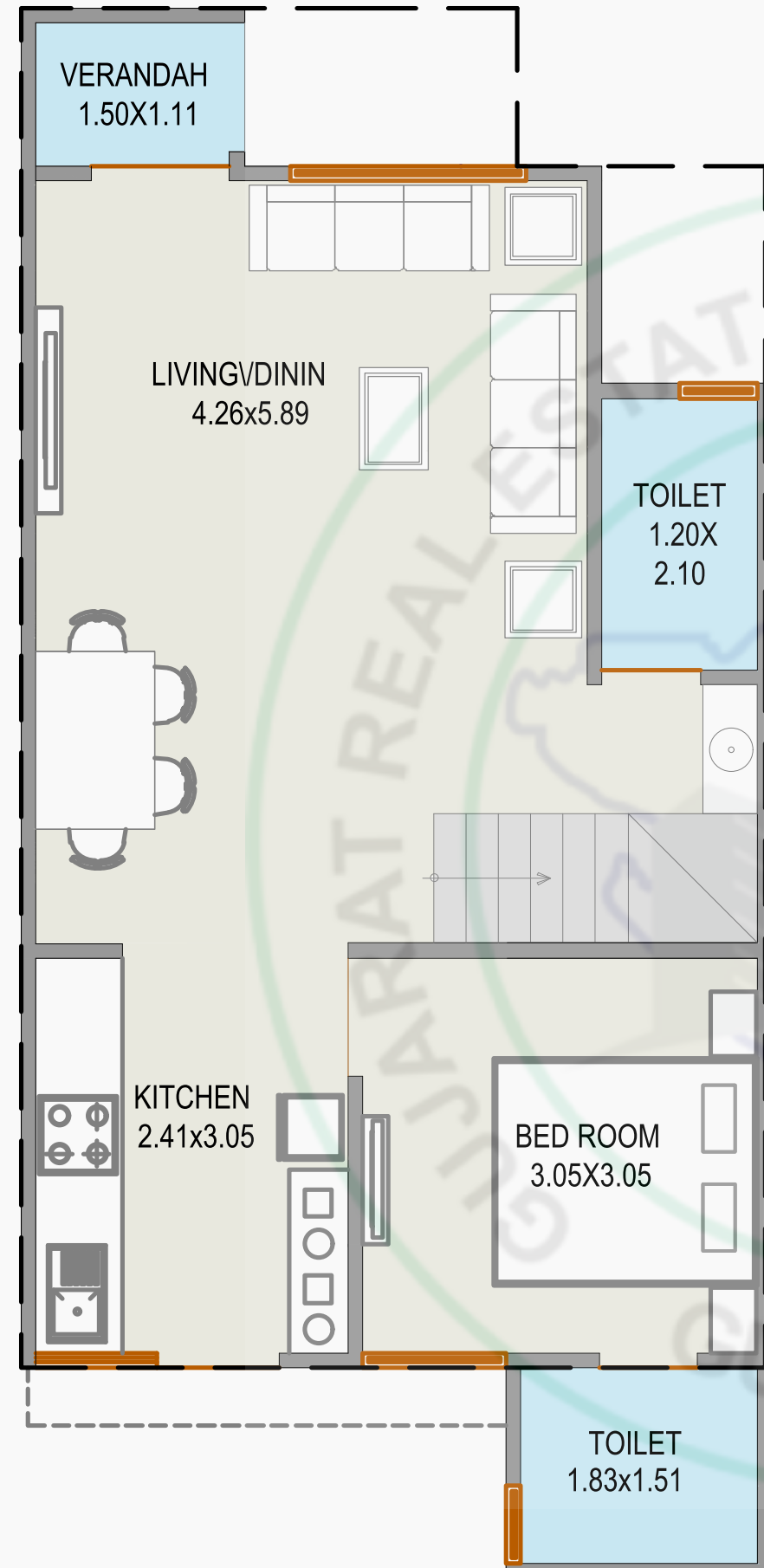
FIRST FLOOR PLAN



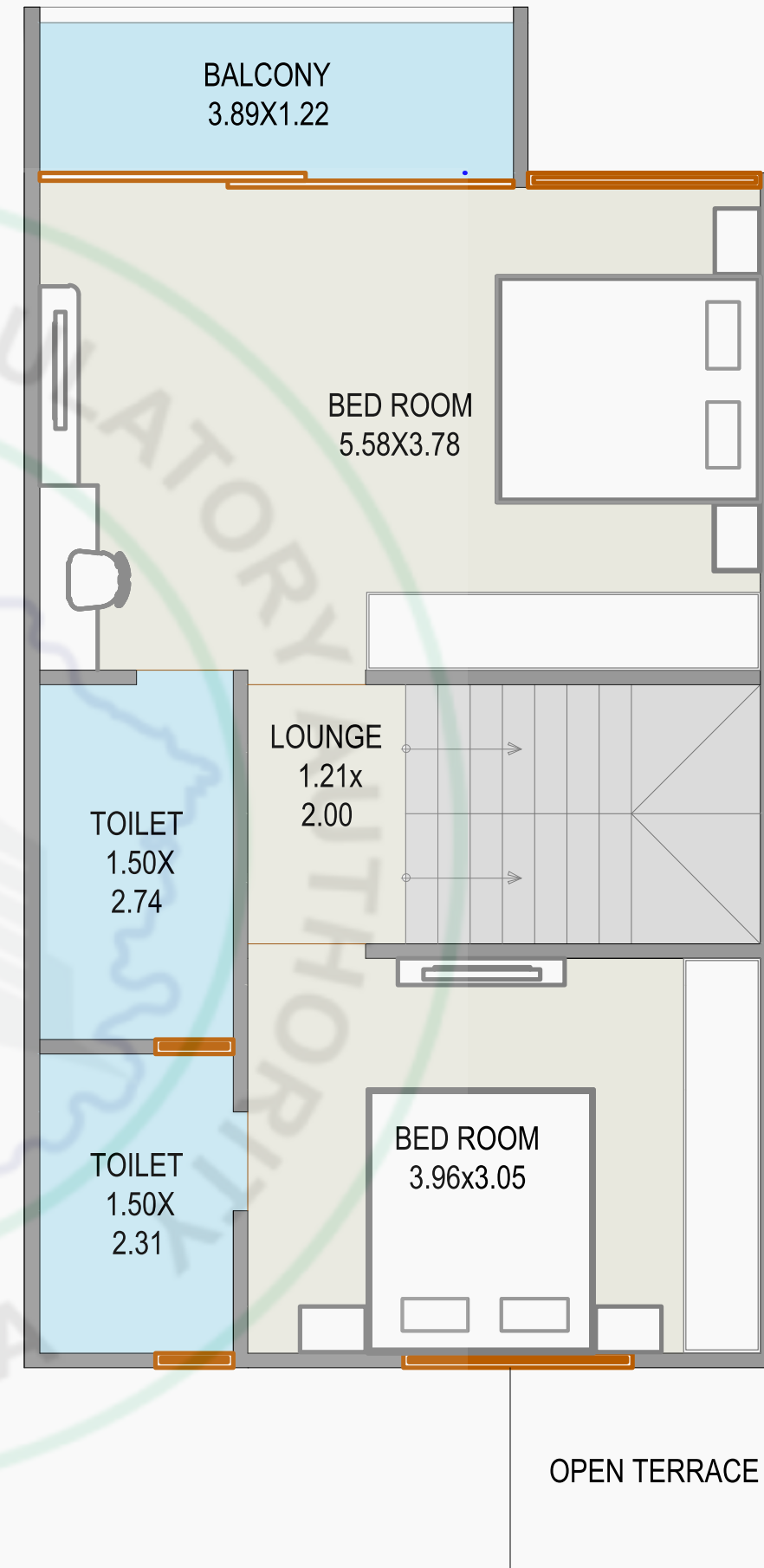
SECOND FLOOR PLAN



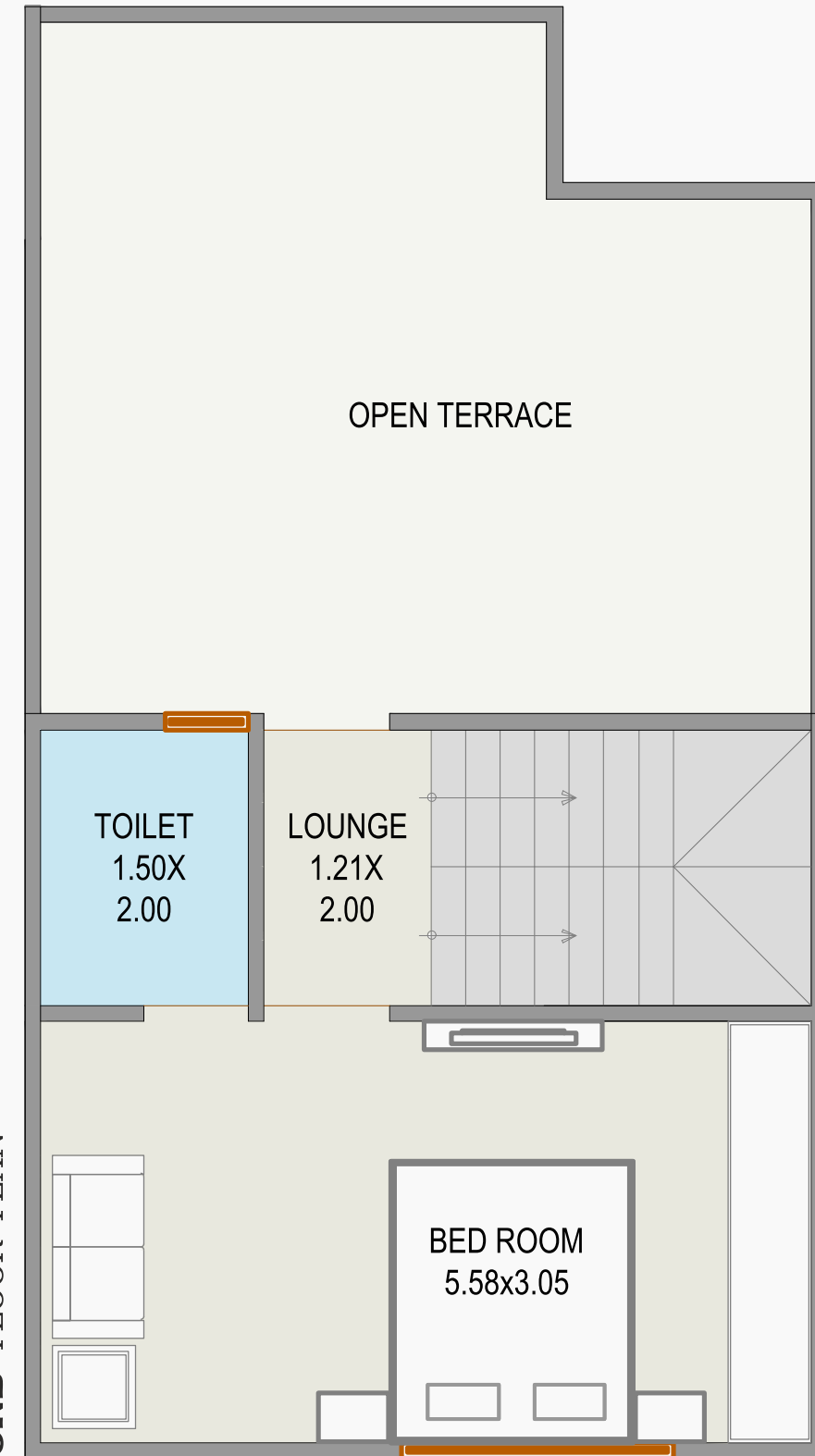
GROUND FLOOR PLAN



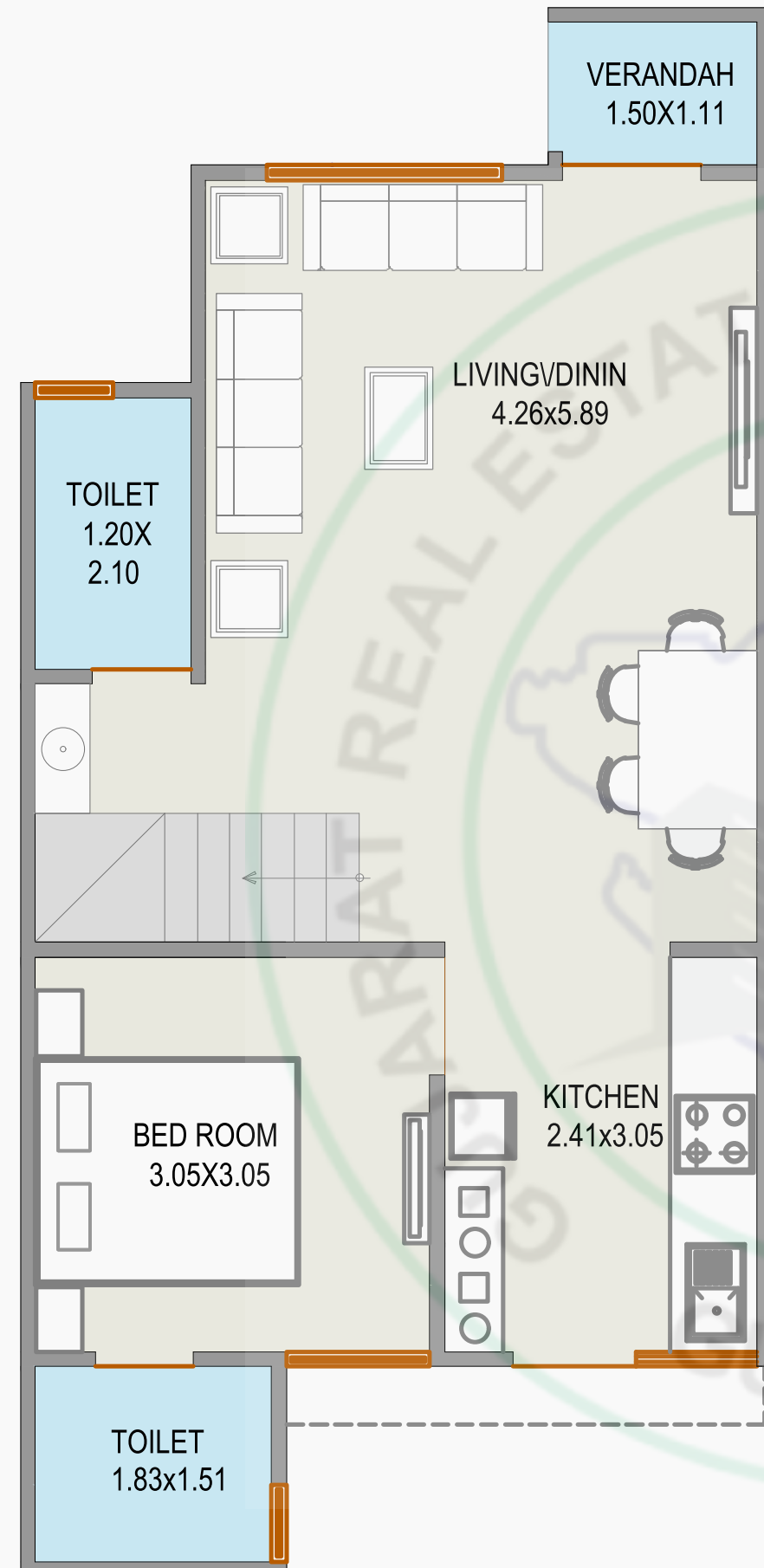
FIRST FLOOR PLAN



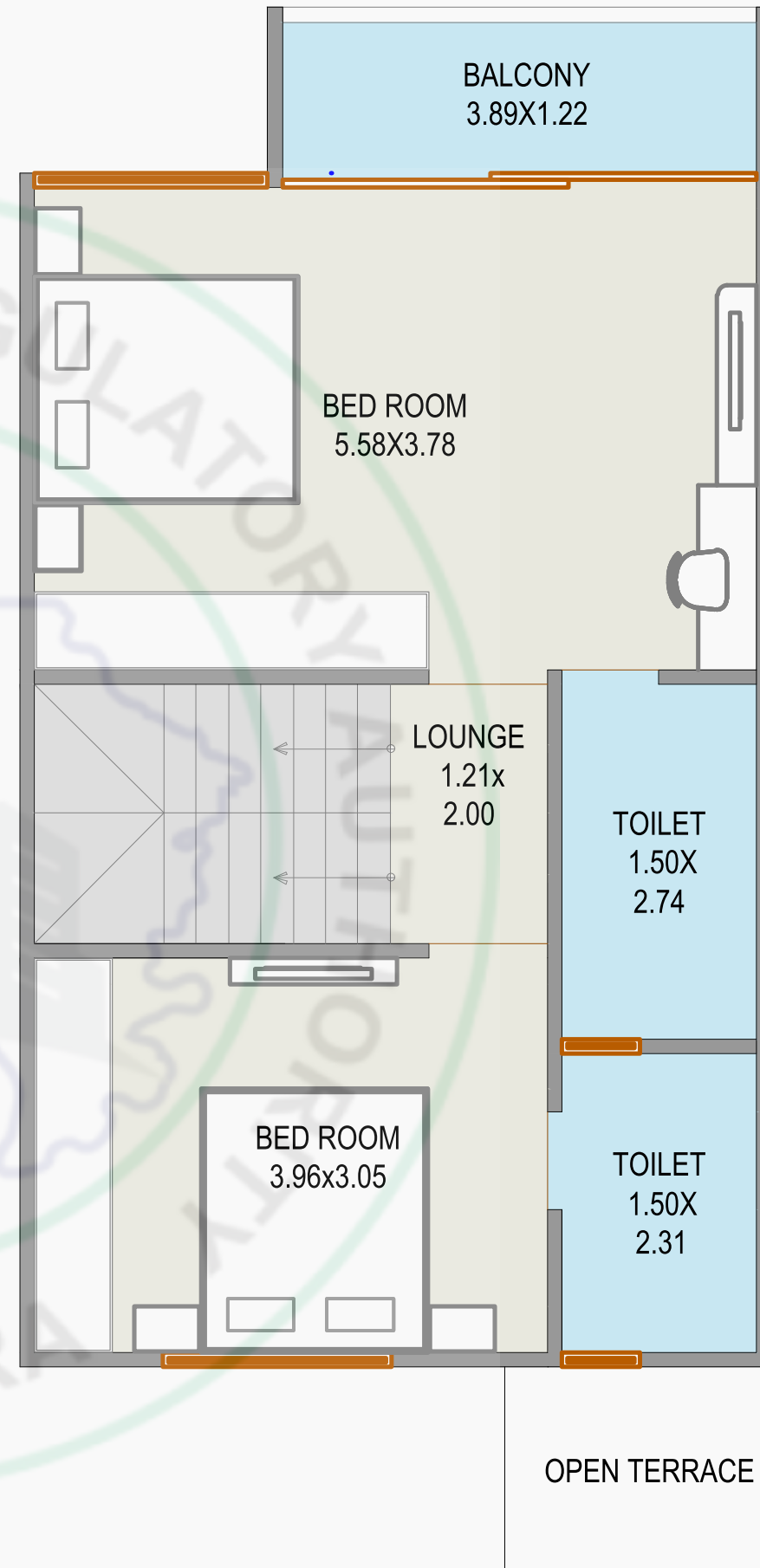
SECOND FLOOR PLAN



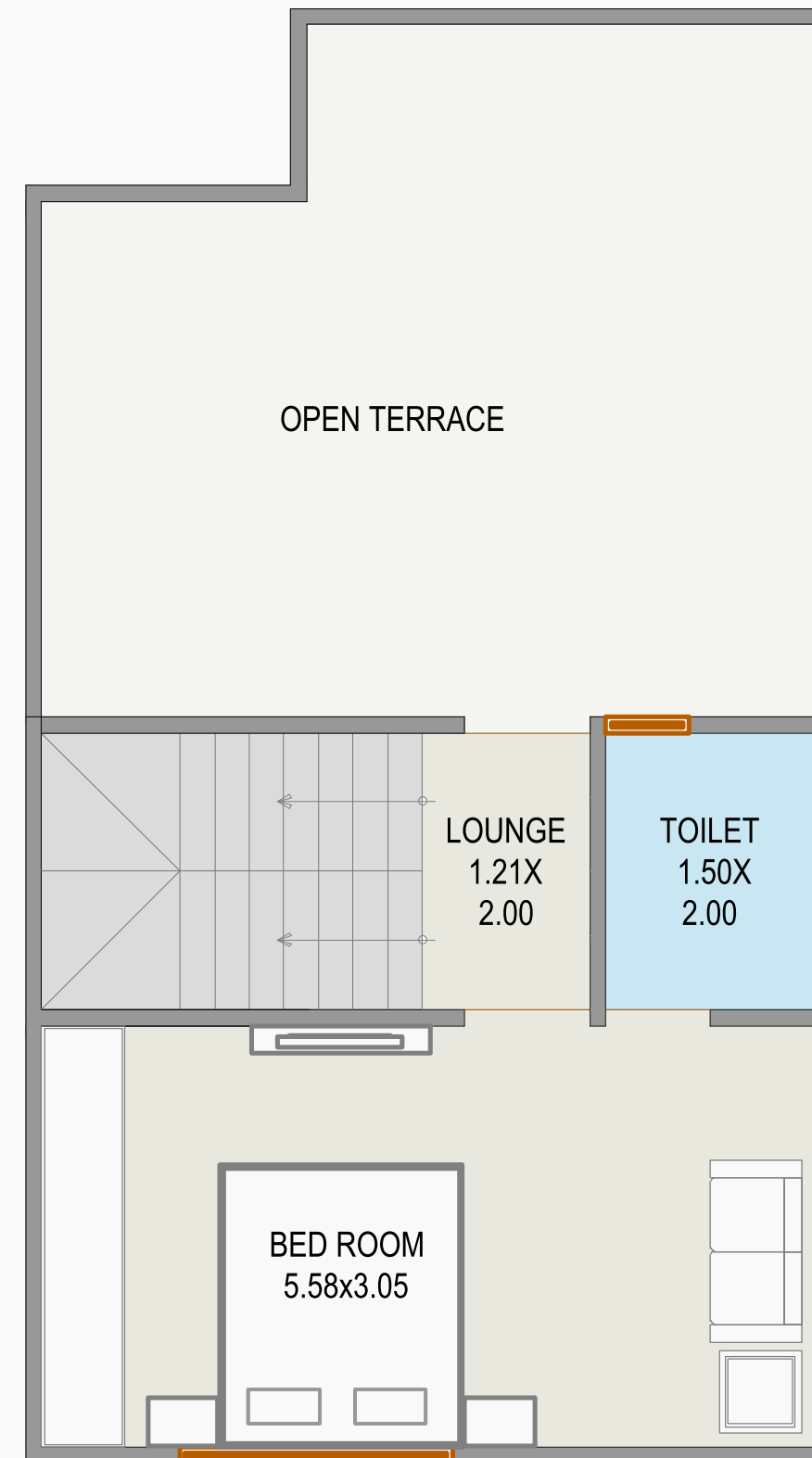
GROUND FLOOR PLAN



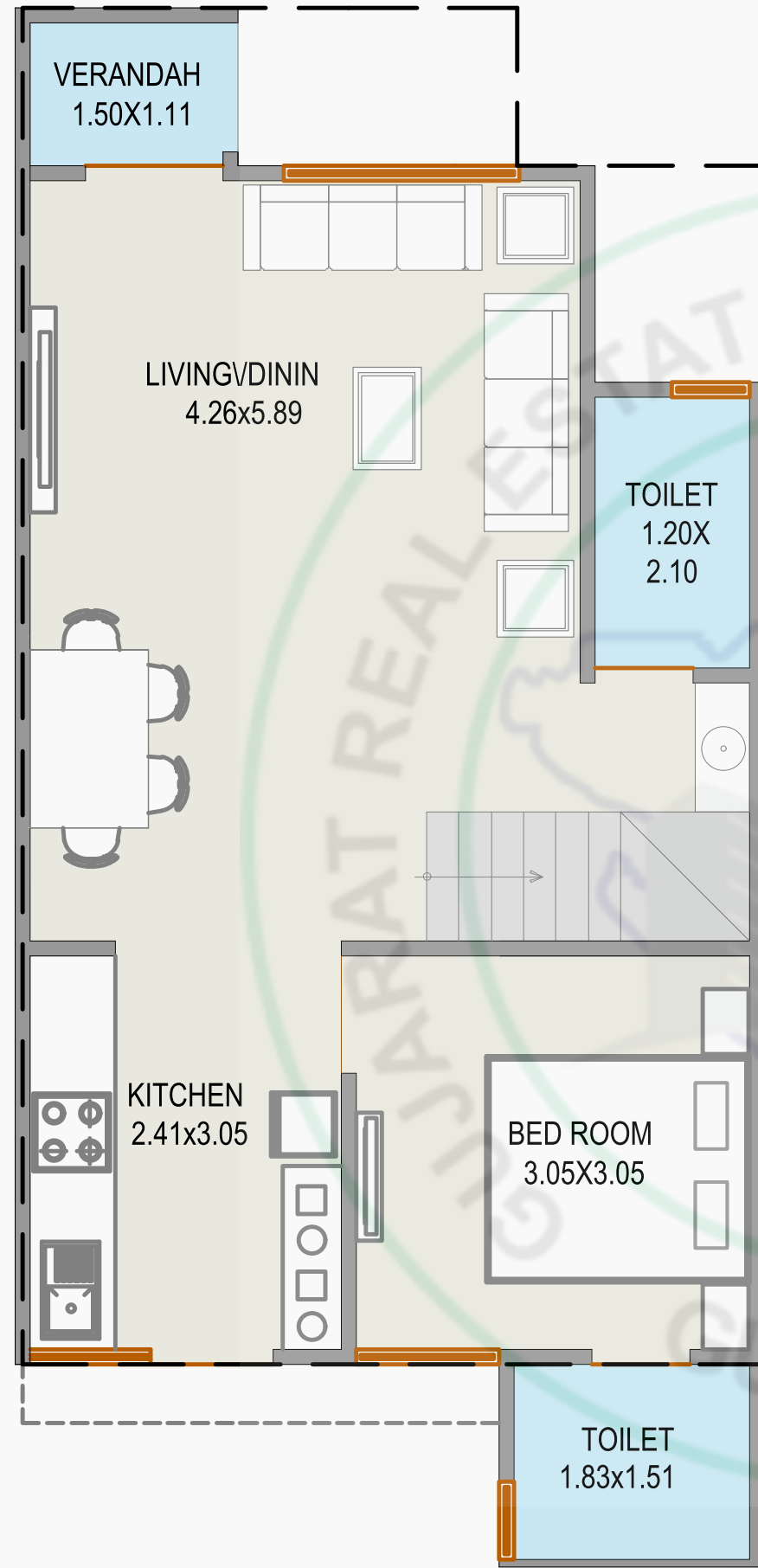
FIRST FLOOR PLAN



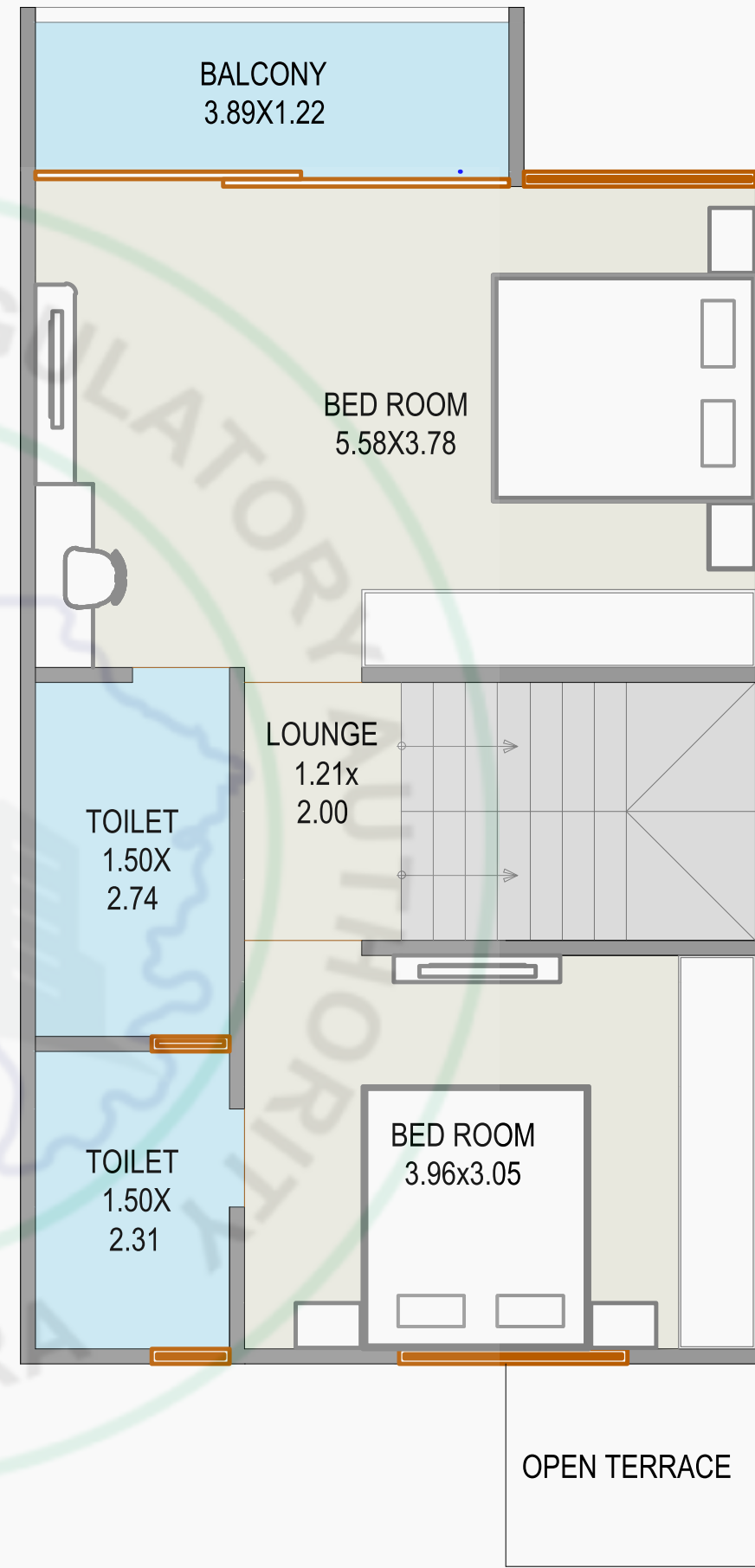
SECOND FLOOR PLAN



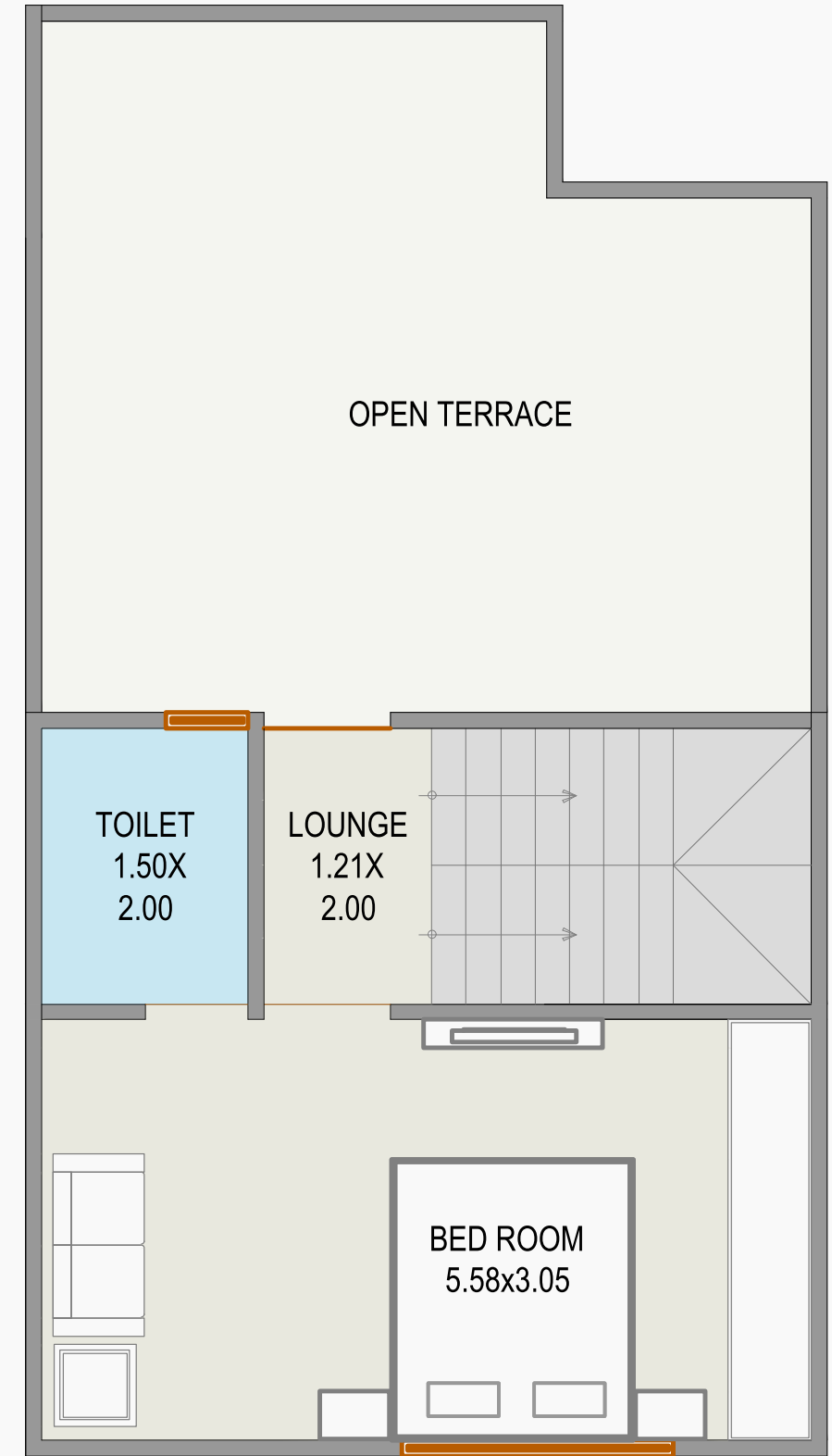
GROUND FLOOR PLAN



FIRST FLOOR PLAN

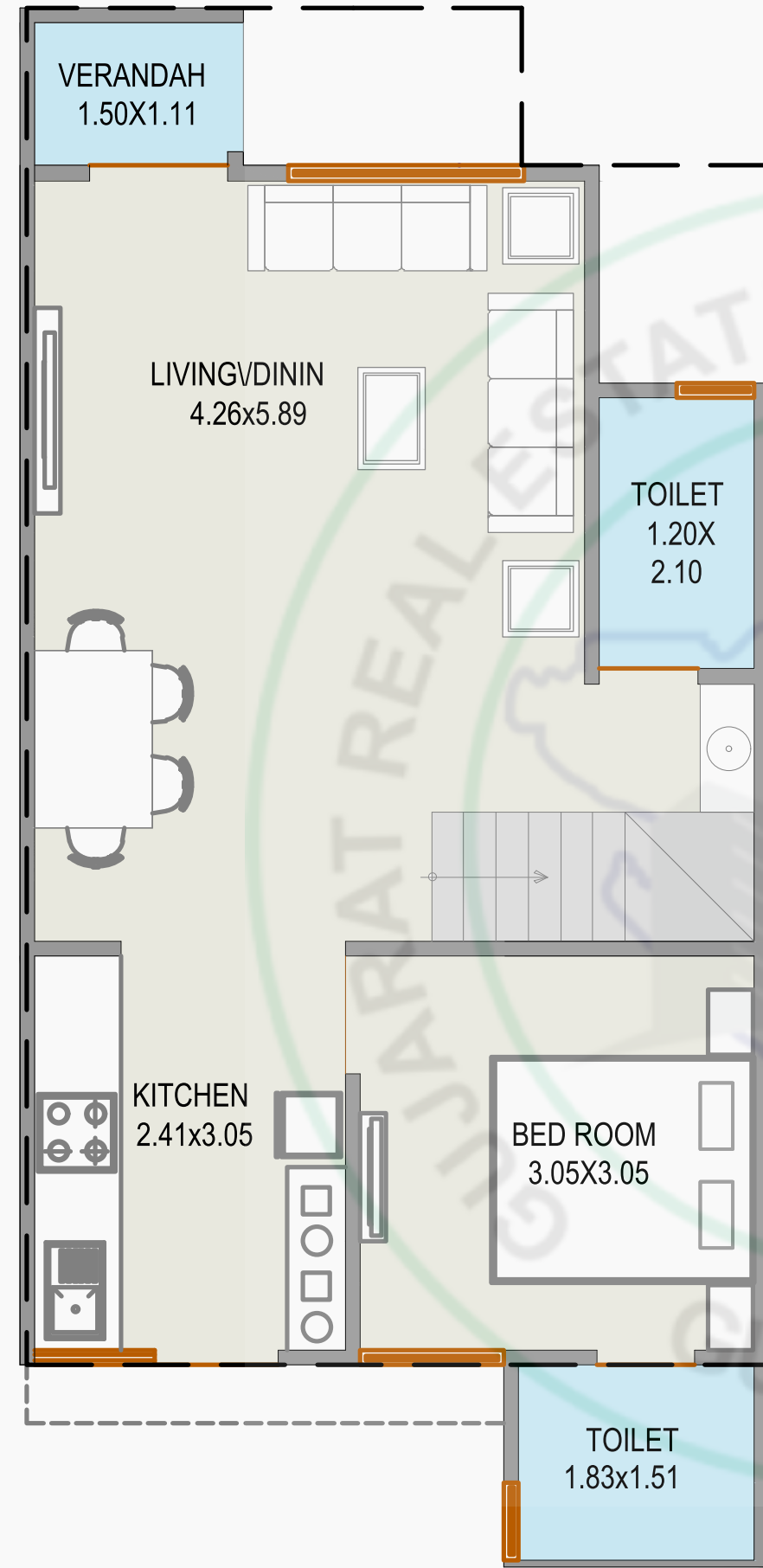


SECOND FLOOR PLAN

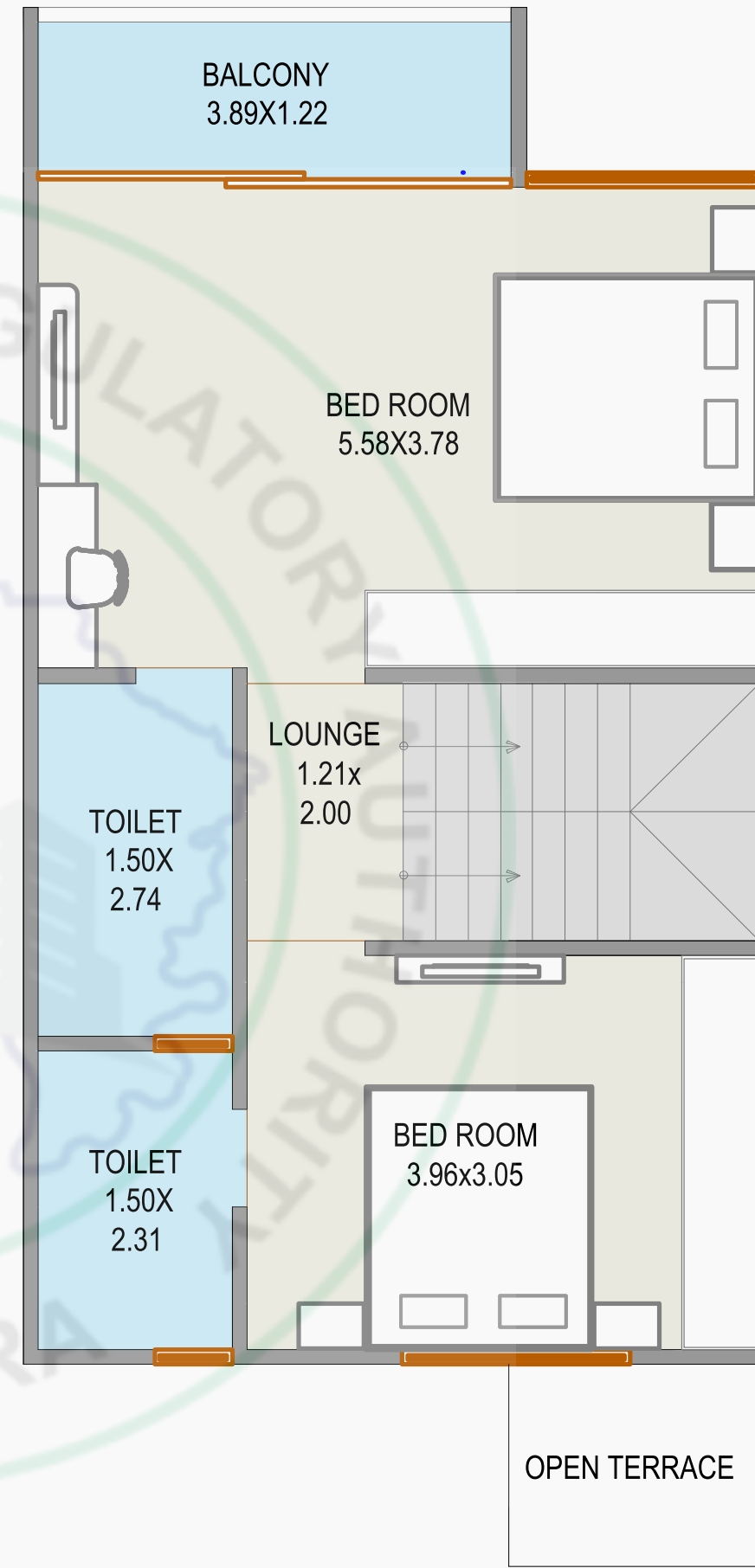


BUNGALOW NO.
10

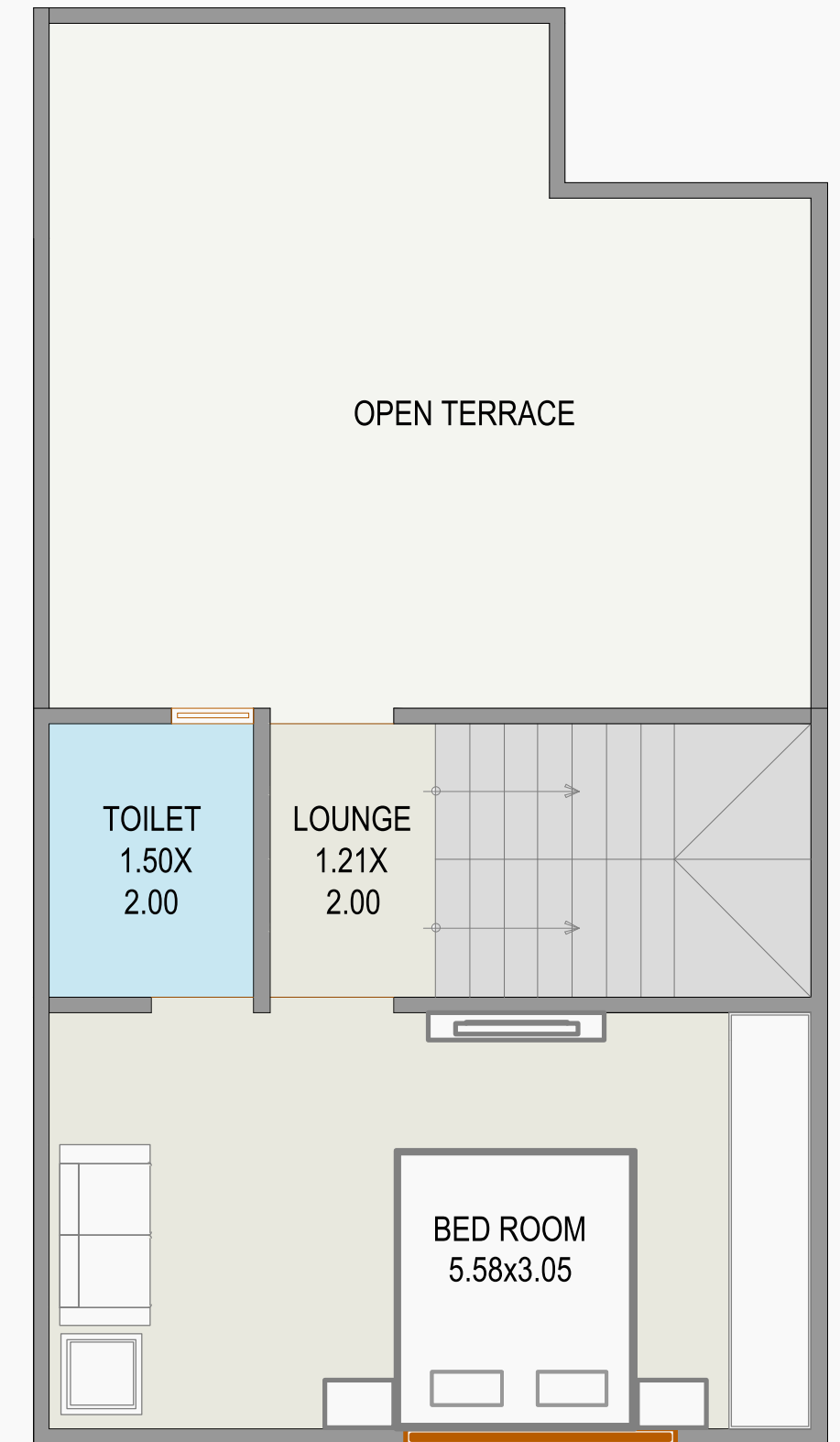
GROUND FLOOR PLAN



FIRST FLOOR PLAN

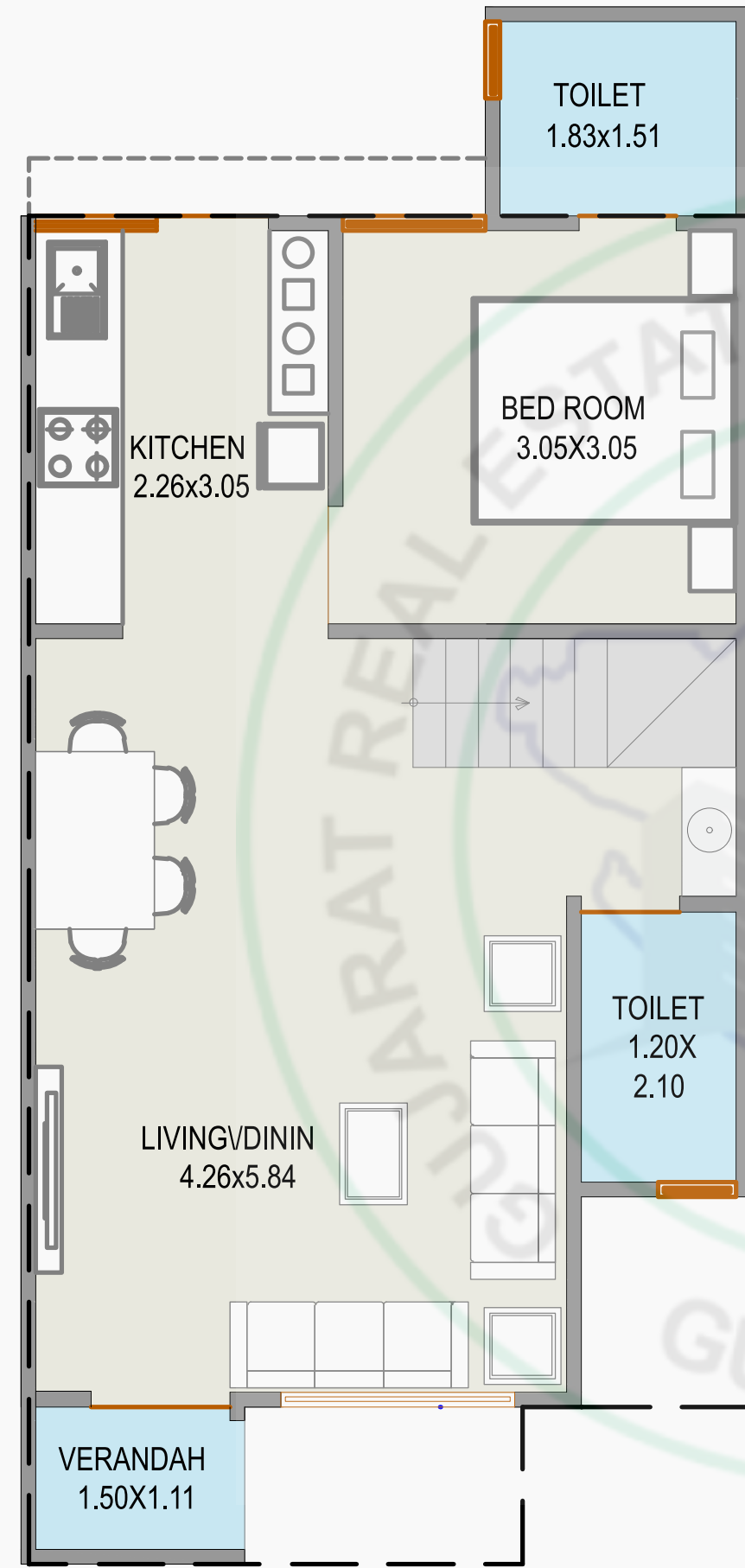


SECOND FLOOR PLAN

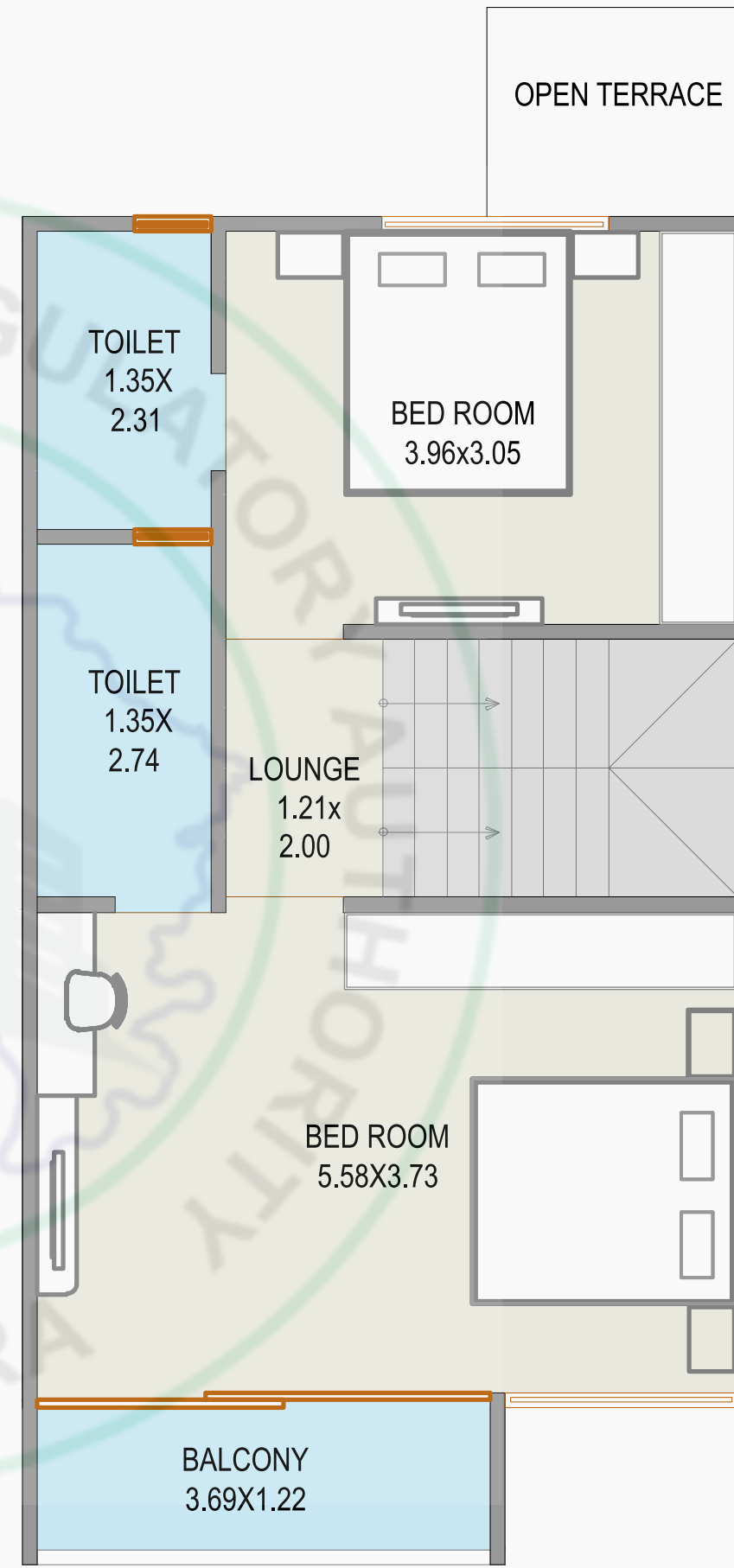


BUNGALOW NO.
11

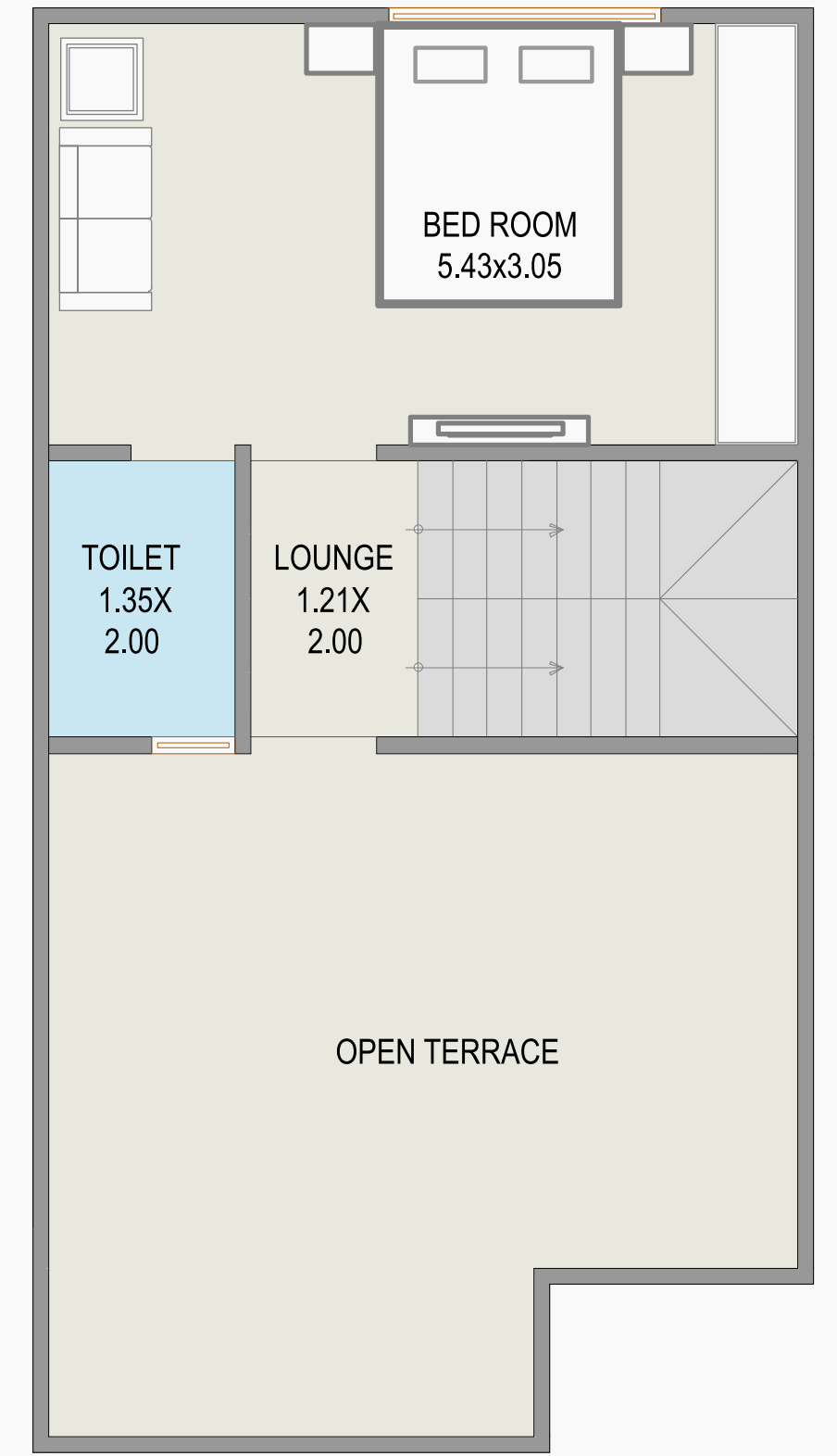
GROUND FLOOR PLAN



FIRST FLOOR PLAN

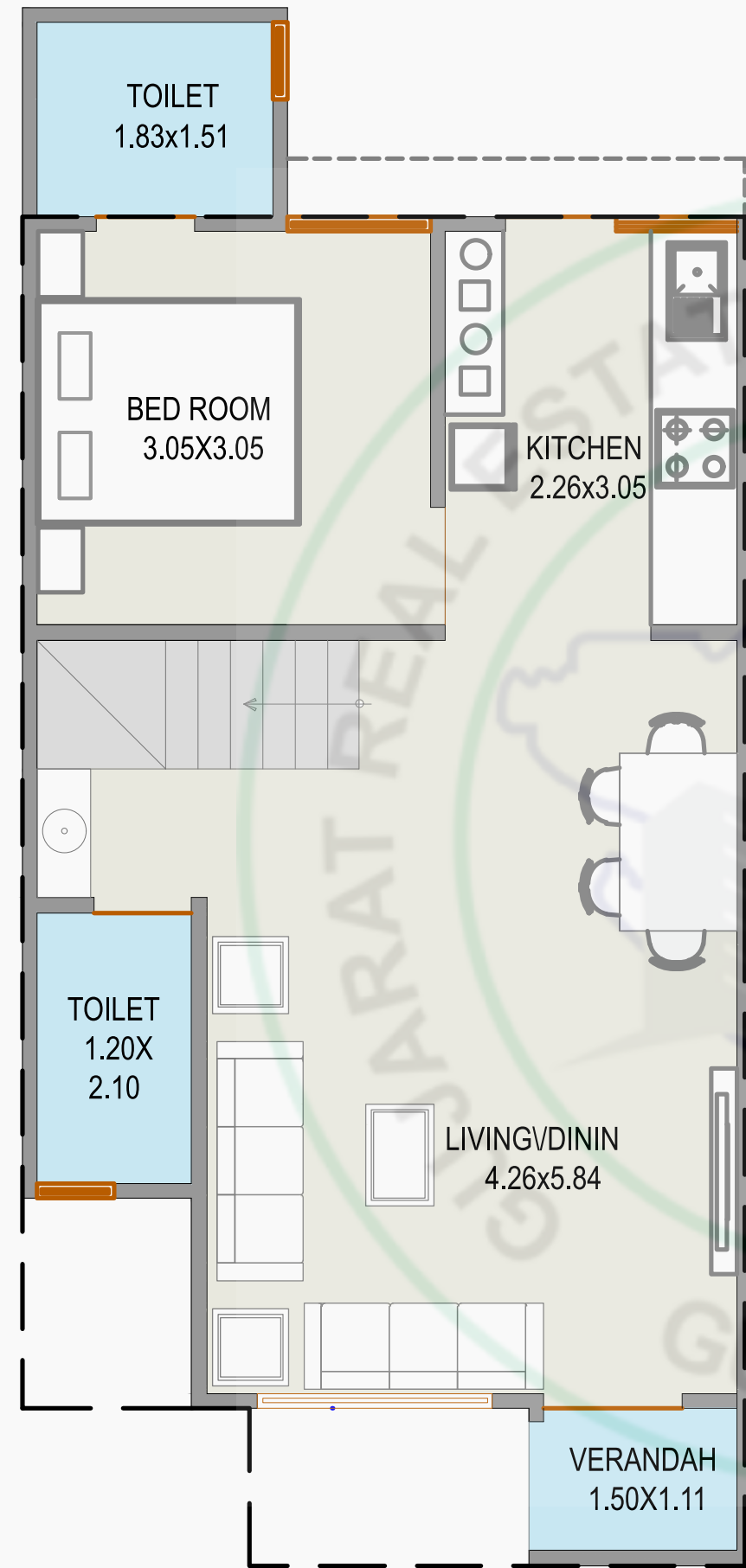


SECOND FLOOR PLAN

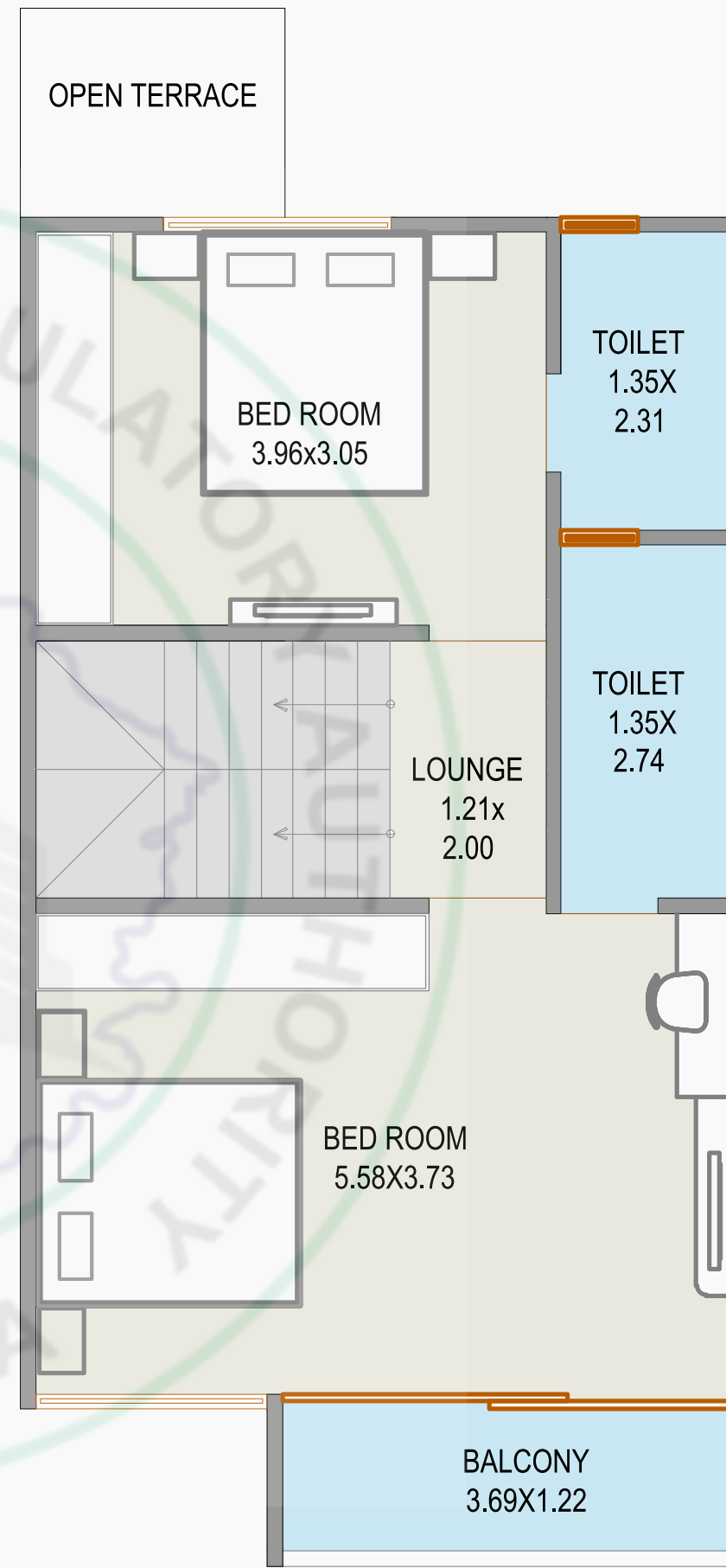


BUNGALOW NO.
12, 14, 16

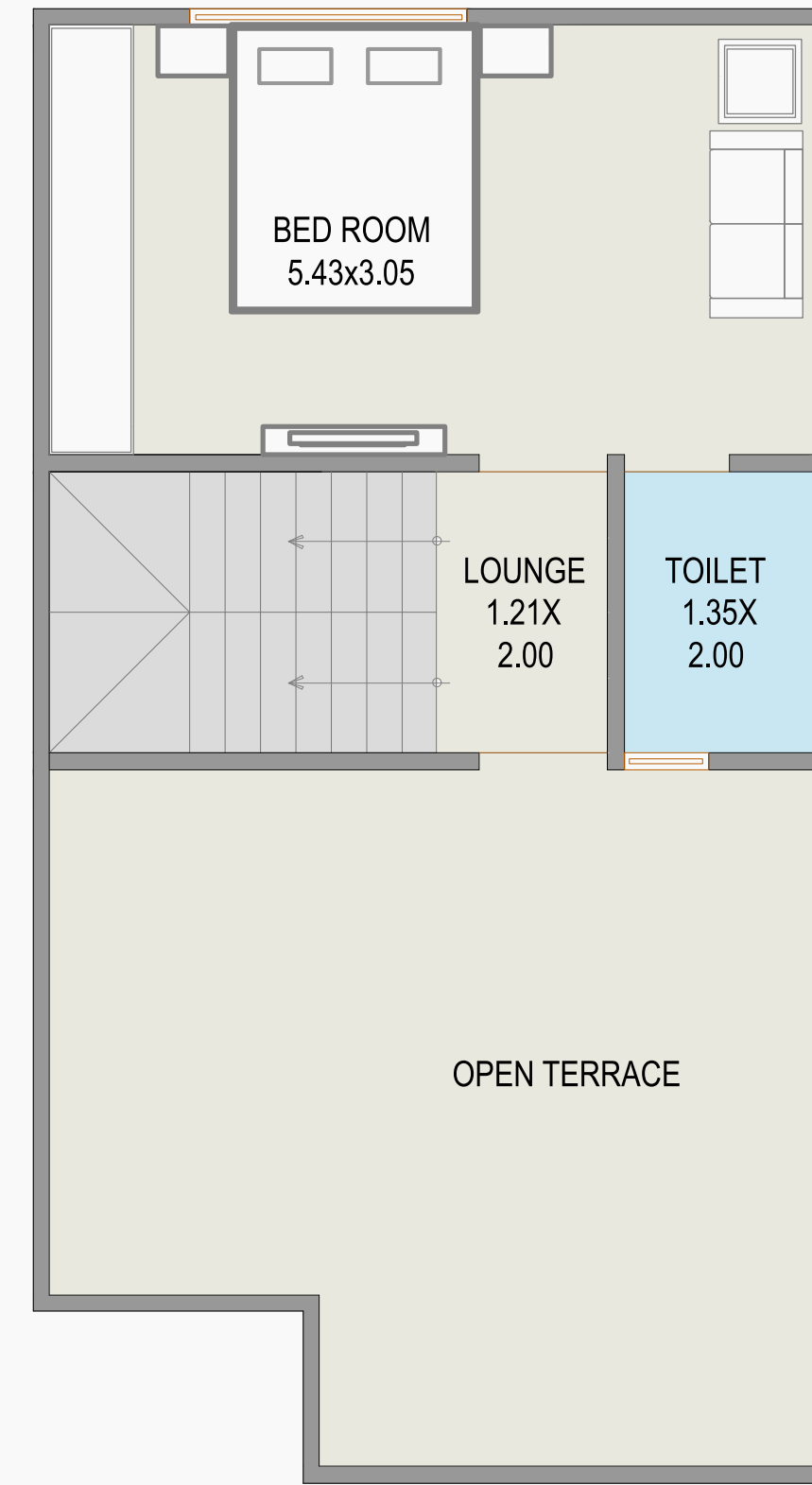
GROUND FLOOR PLAN



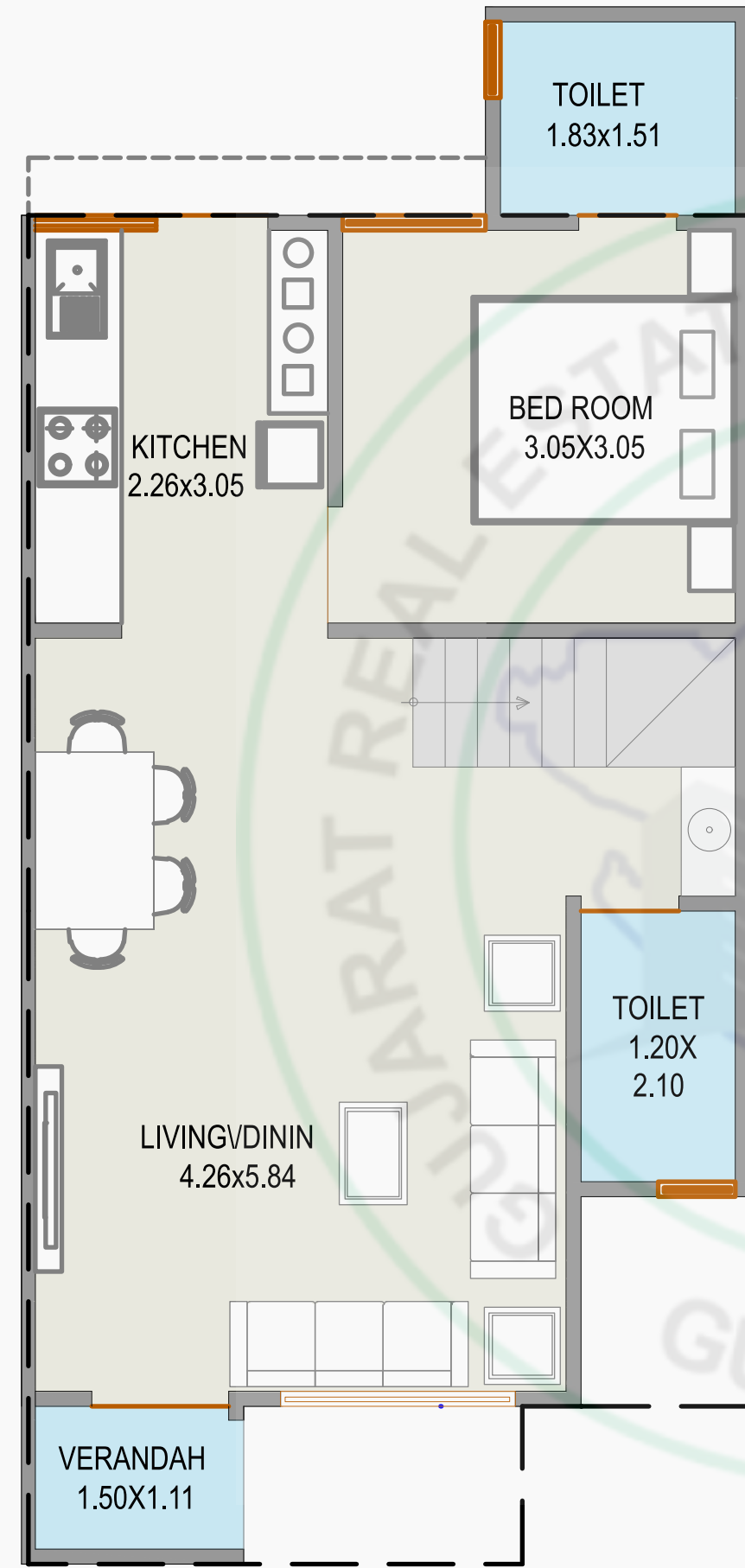
FIRST FLOOR PLAN



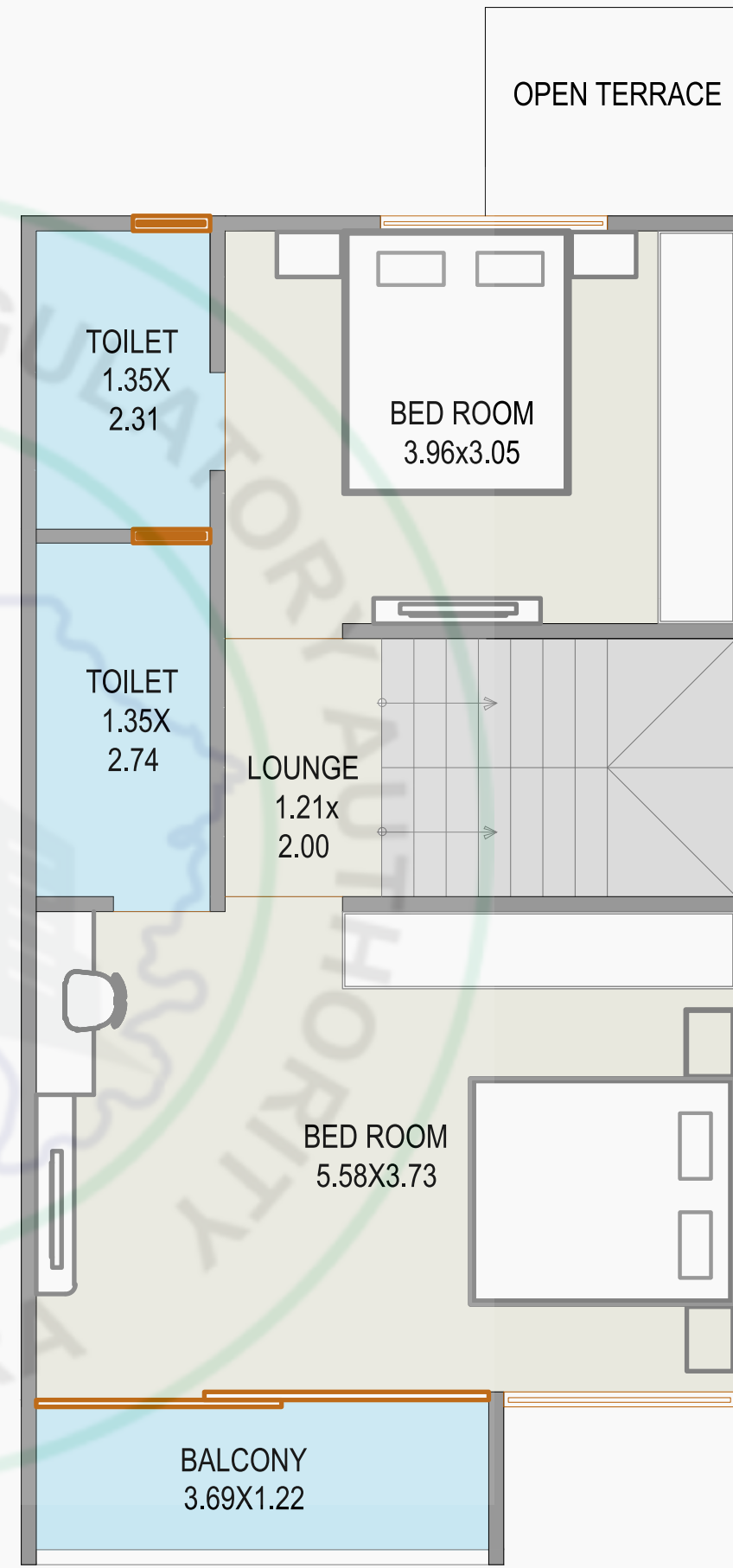
SECOND FLOOR PLAN



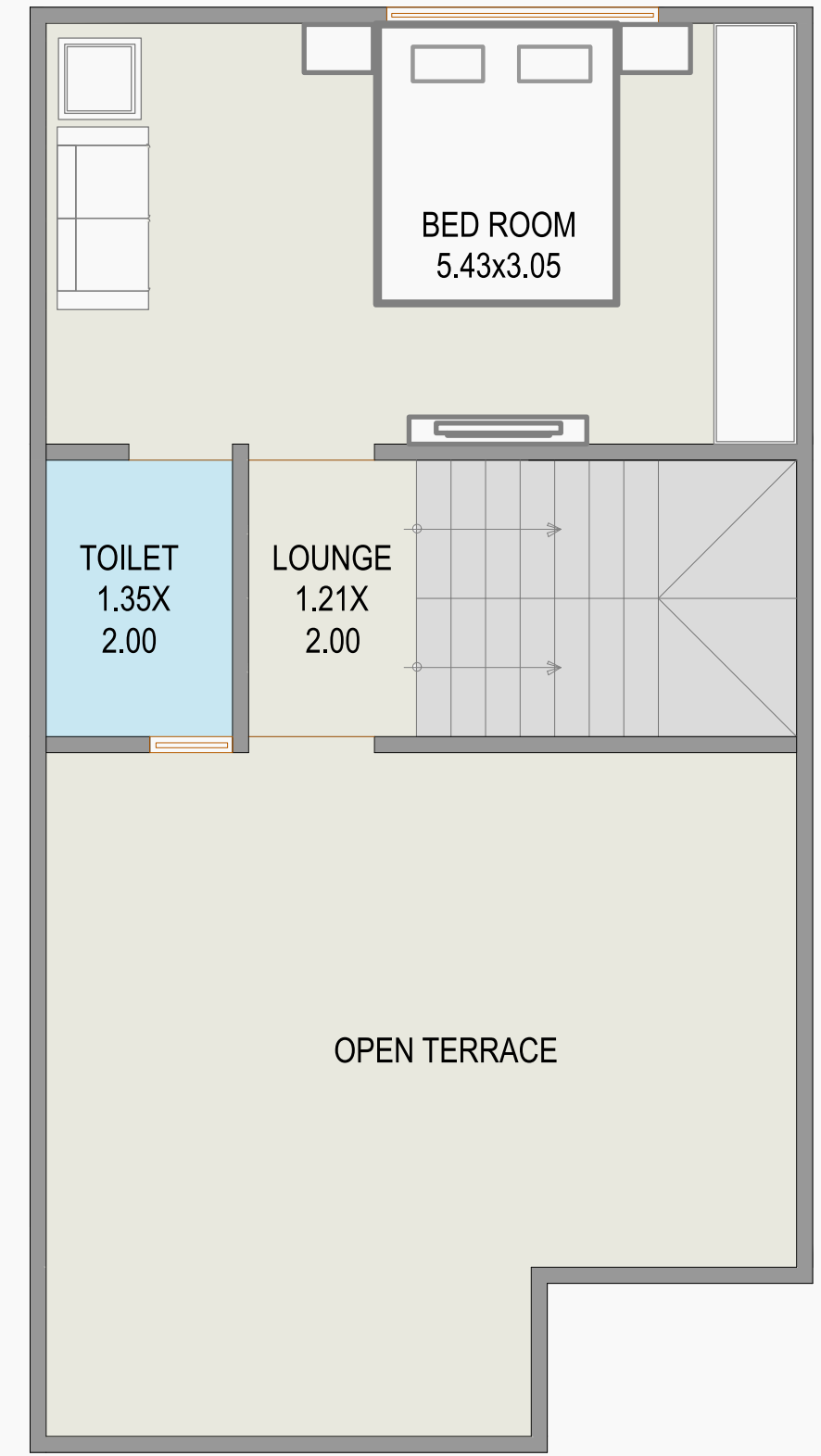
GROUND FLOOR PLAN



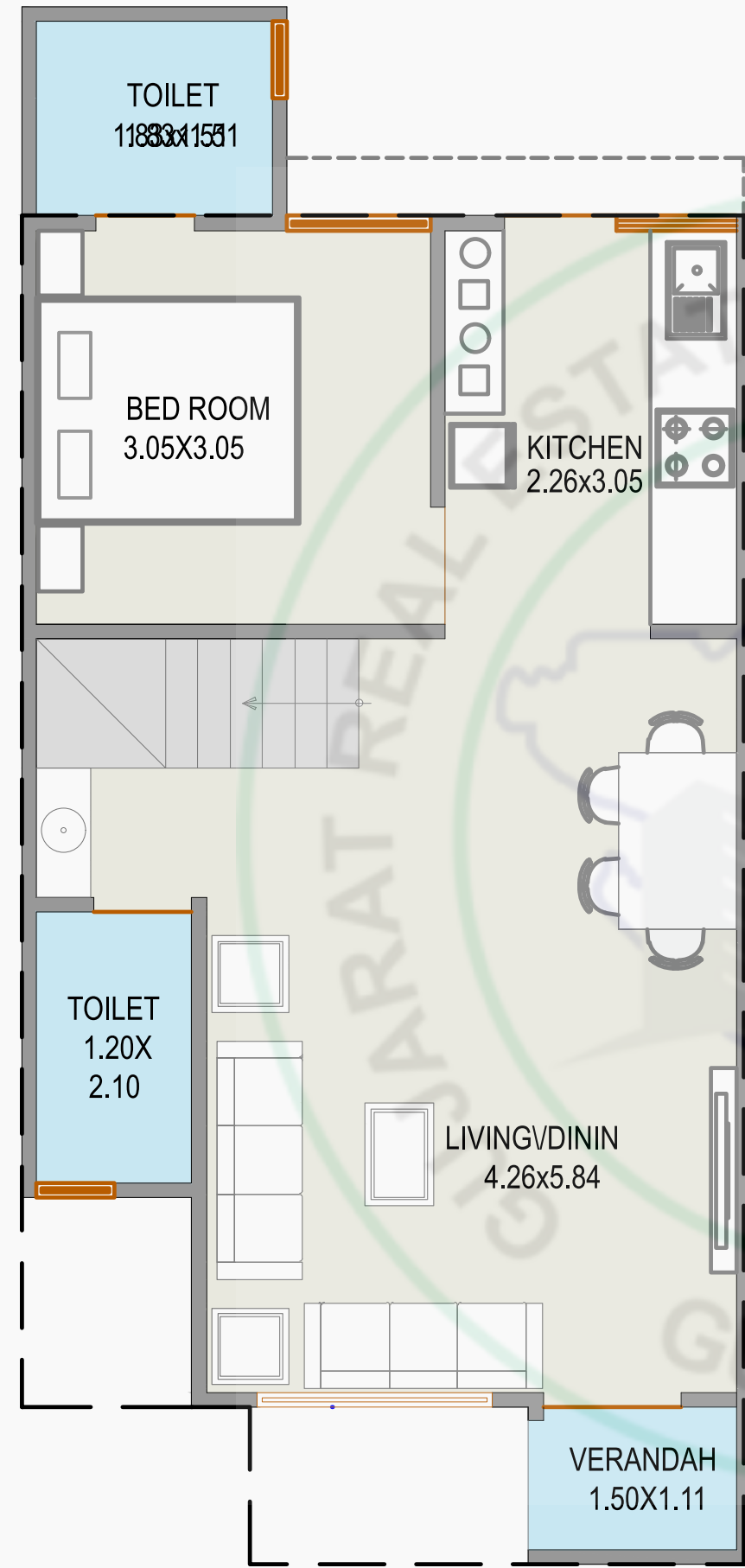
FIRST FLOOR PLAN



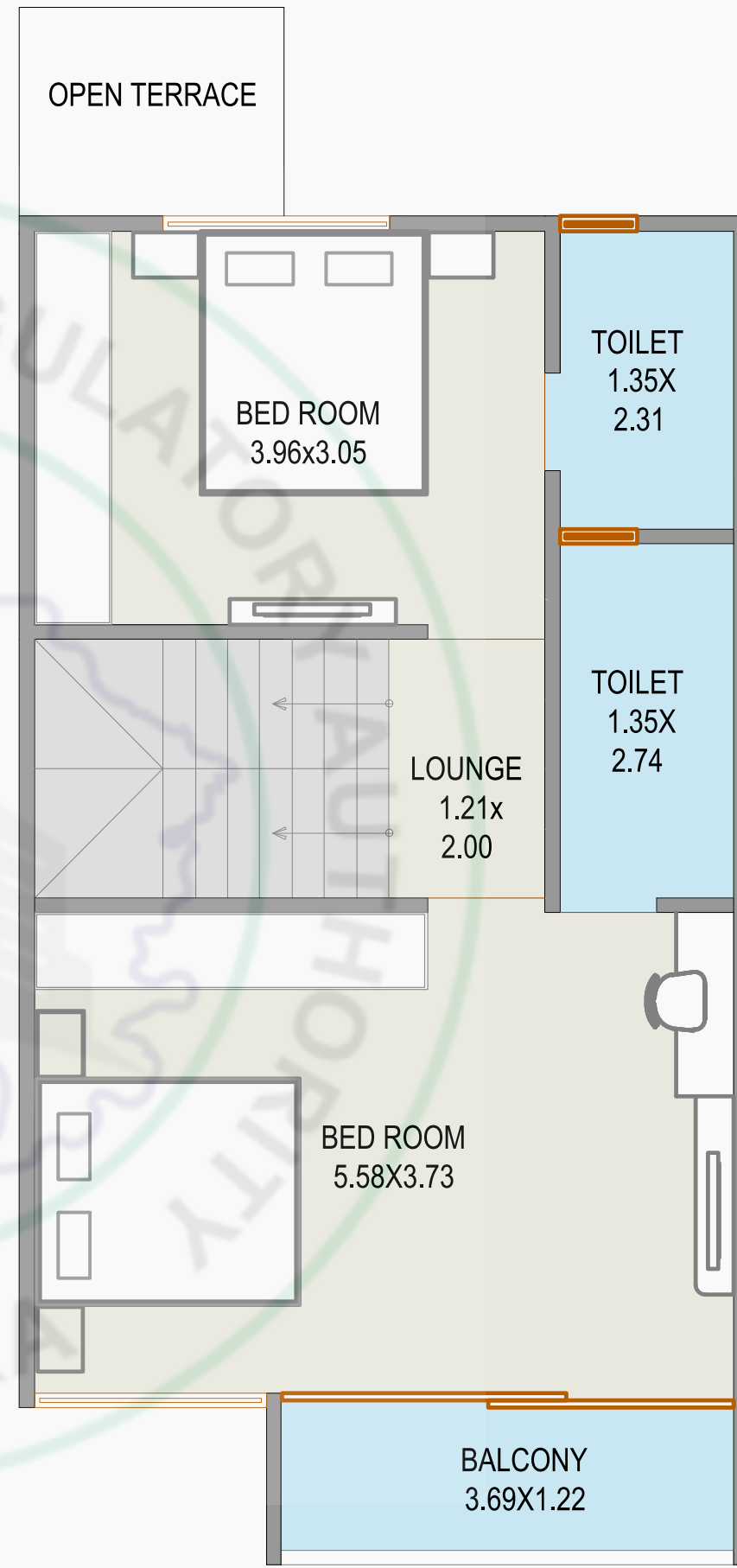
SECOND FLOOR PLAN



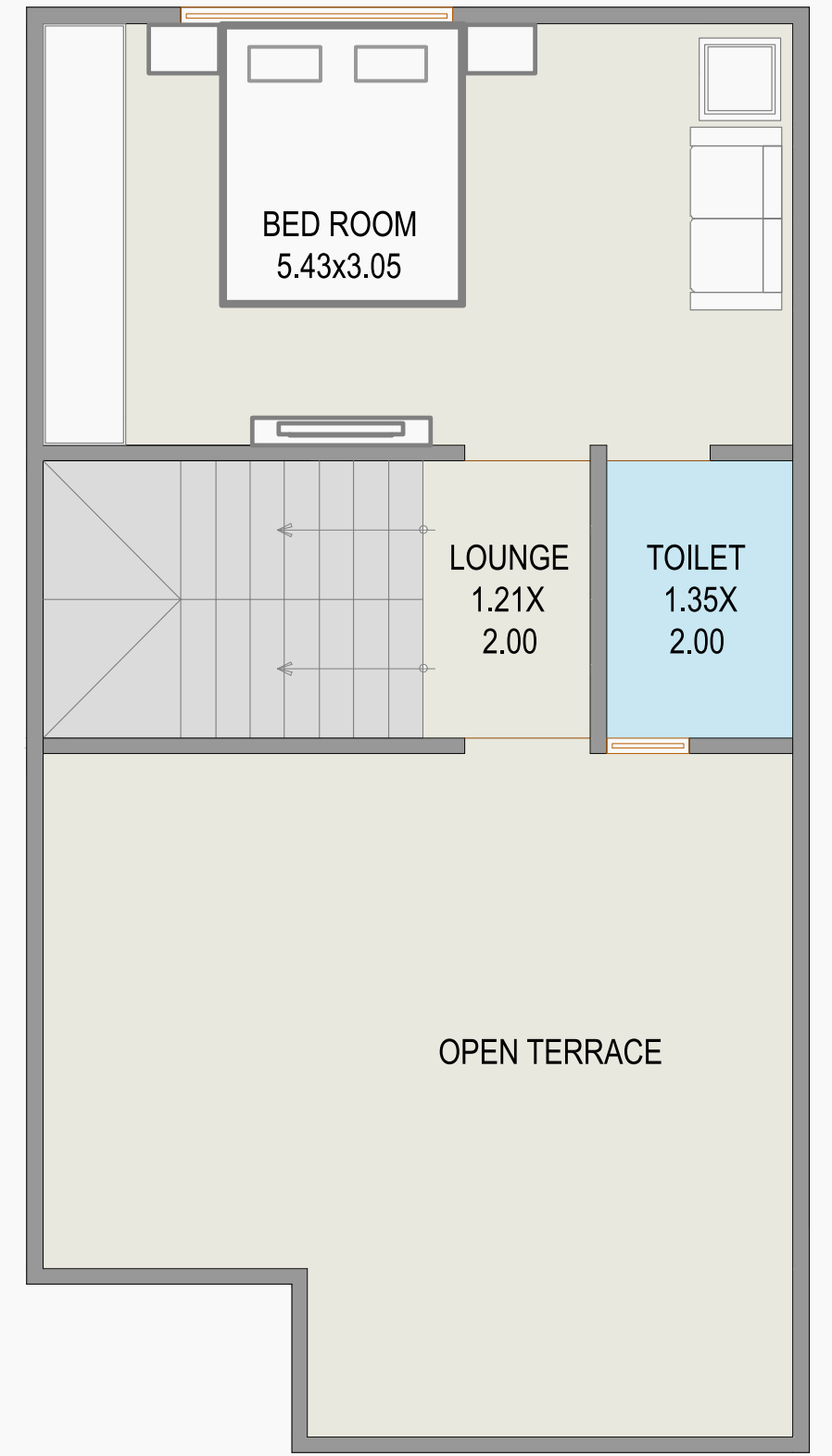
GROUND FLOOR PLAN

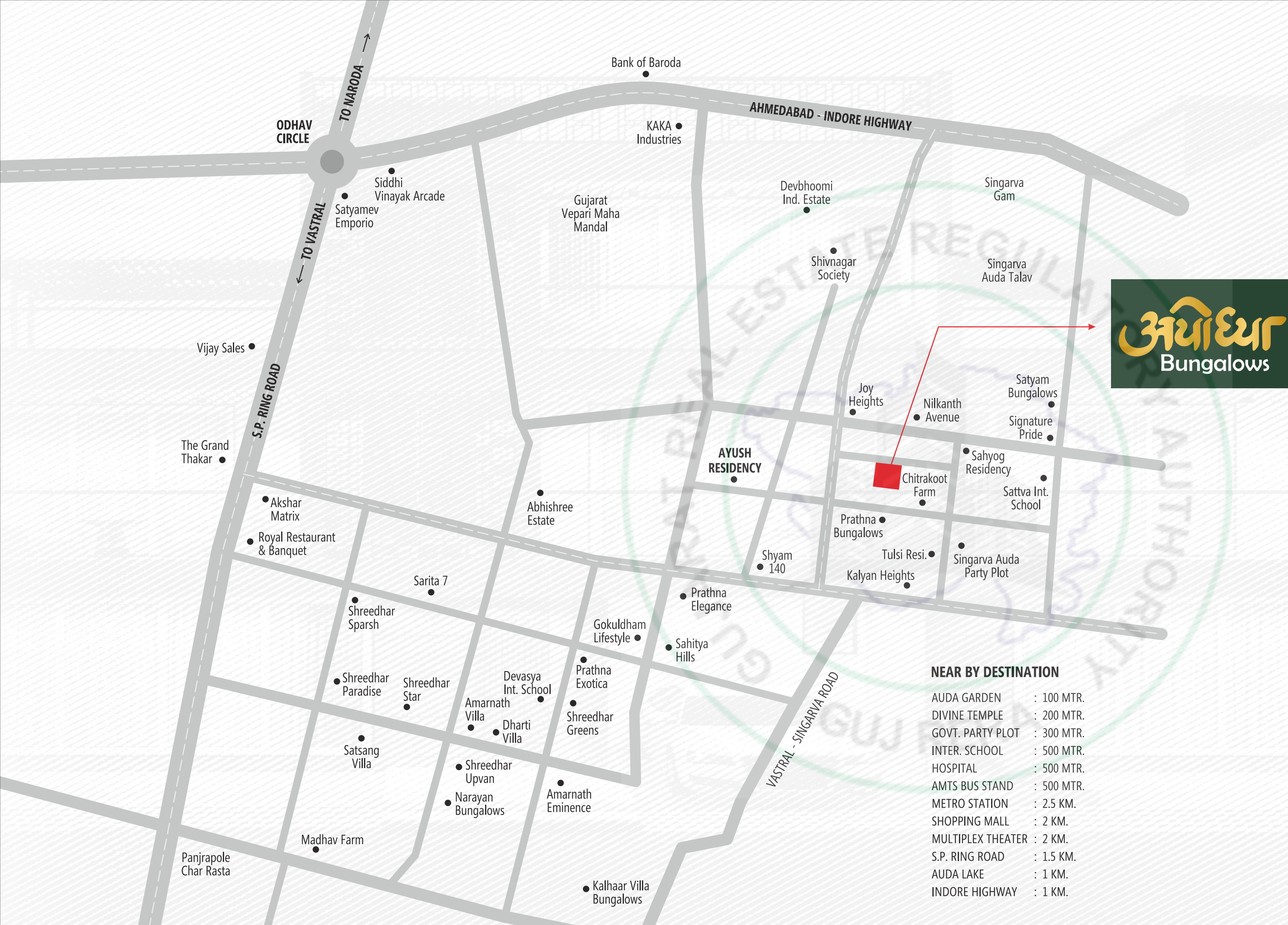


FIRST FLOOR PLAN



SECOND FLOOR PLAN





NEAR BY DESTINATION

AUDA GARDEN	: 100 MTR.
DIVINE TEMPLE	: 200 MTR.
GOVT. PARTY PLOT	: 300 MTR.
INTER. SCHOOL	: 500 MTR.
HOSPITAL	: 500 MTR.
AMTS BUS STAND	: 500 MTR.
METRO STATION	: 2.5 KM.
SHOPPING MALL	: 2 KM.
MULTIPLEX THEATER	: 2 KM.
S.P. RING ROAD	: 1.5 KM.
AUDA LAKE	: 1 KM.
INDORE HIGHWAY	: 1 KM.

SPECIFICATION

STRUCTURE :

- Earthquake resistant frame structure

WALL FINISH / ELEVATION

- Internal : Mala plaster with putty finish
- External : Double coat sand face plaster with weather resistant acrylic paint

FLOORING :

- Unique premium quality vitrified tiles in entire bungalows.

TERRACE AND BALCONY :

- China mosaic on terrace (Rustic Tiles in balcony area.)

PLUMBING :

- ISI-grade **Ashirwad** premium quality plumbing fittings with geyser point and mixtures in all bathrooms

KITCHEN :

- Premium quality granite platform
- Branded S.S. Sink
- Colour glazed tiles upto lintel level

STAIRS :

- Good quality granite stair-steps with decorative railing

DOORS AND WINDOWS :

- Decorative main door & All other doors are plain flush door with wooden / granite frame. Aluminum sliding windows with granite frame.

TOILET :

- Designer tiles on floor and walls upto lintel level.
- Premium quality bath fittings & sanitary ware. (Jaquar / Cera)

ELECTRIFICATION :

- Concealed ISI copper wiring with modular switches
- Adequate number of points as per architect's design
- AC & TV points in all bedrooms
- Washing machine point
- Exhaust fan point in all bathrooms

Please Note : • Actual Dimensions may vary as per the site conditions • Developers / Architect reserves all the right to change/after/raise scheme related measurement, design, drawings and price per unit etc. and shall be binding to the Buyers unconditionally • Buyer's are not allowed to do any external change in elevation of the Villa. • This brochure is not a legal document, this is only for presentation of the project.