

THE  
CENTRE  
OF  
ATTRACTION



TARUN  
NAGAR



A project of

  
**protech**®

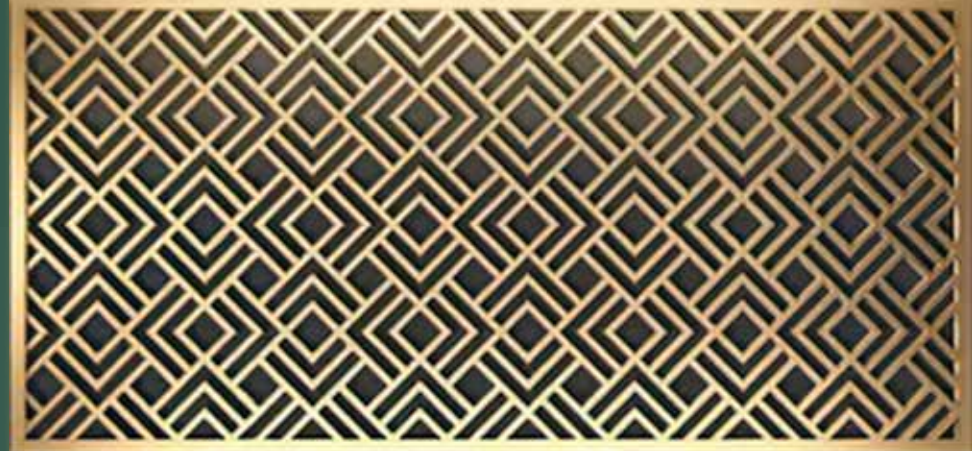


..... ~ .....

World starts its day with the  
Warmth of its Golden Liquid

..... ~ .....

When the rising Sun fills the valley with its bright hues, infuse  
vibrance to your life with the enchanting aroma of Assam tea  
for the great start of a day.



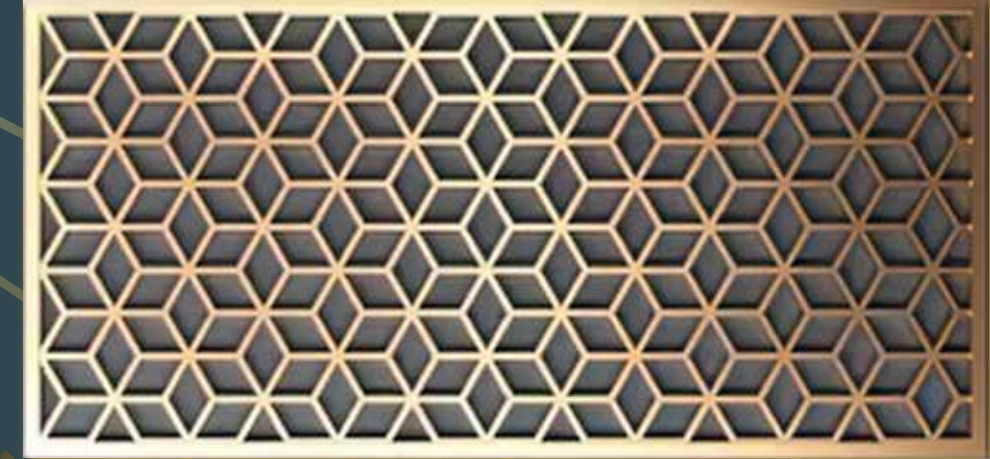


..... ~ .....

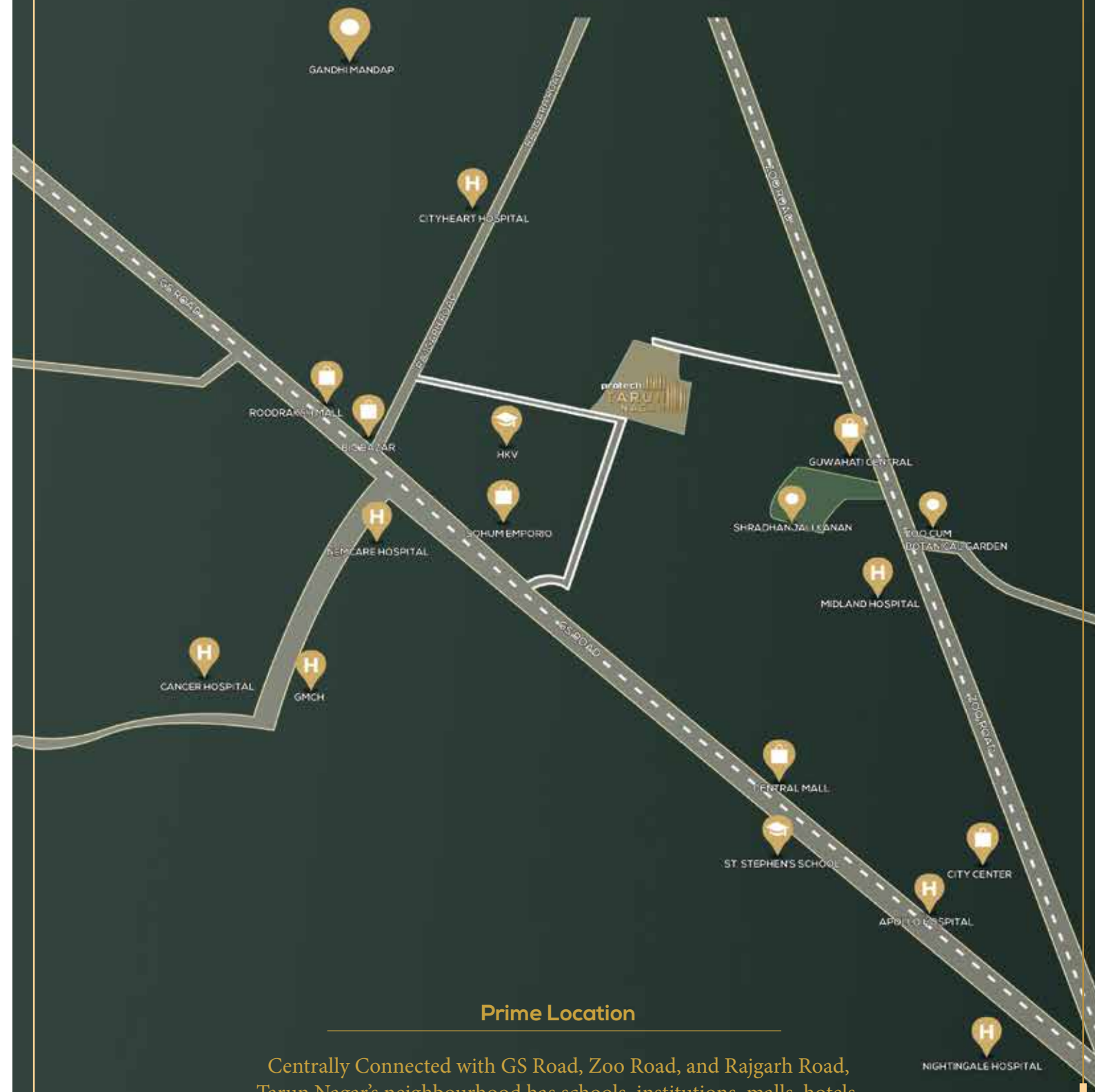
The Epitome of Emerging India  
Welcomes you to explore  
its hidden myths

..... ~ .....

Lies along the Brahmaputra River, known as the lifeline of Assam, Guwahati is the most coveted & fastest growing city that has many more to offer.



# Location map



## Prime Location

Centrally Connected with GS Road, Zoo Road, and Rajgarh Road, Tarun Nagar's neighbourhood has schools, institutions, malls, hotels, hospitals, departmental stores and many amenities close by.



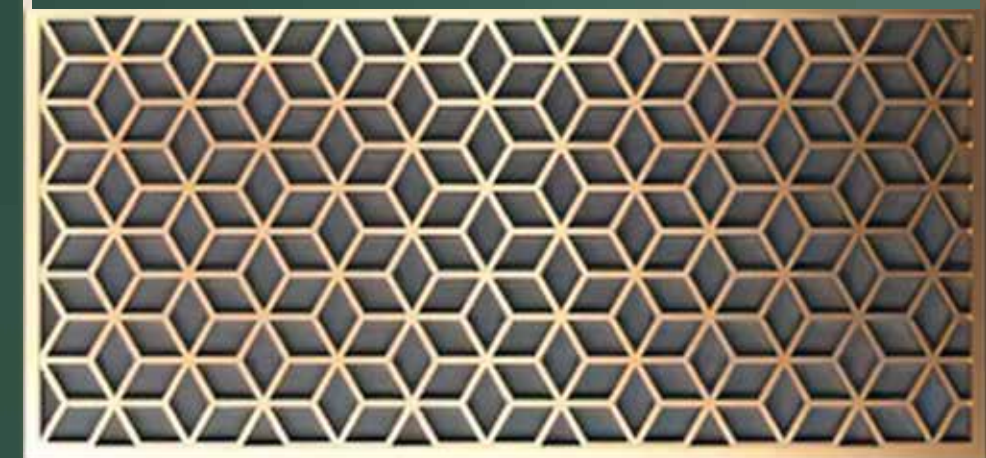
HOSPITALS	Distance
NEMCARE HOSPITAL	950 M
GMCH	15K M
CANCER HOSPITAL	18 KM
CITYHEART HOSPITAL	11 KM
MIDLAND HOSPITAL	14 KM
APOLLO HOSPITAL	18 KM
NIGHTINGALE HOSPITAL	2.7 KM

MALLS	Distance
BIG BAZAR	700M
SOHUM EMPORIO	650M
ROODRAKSH MALL	710M
CITY CENTER	18KM
GUWAHATI CENTRAL	650M
CENTRAL MALL	14KM

SCHOOLS	Distance
ROYAL GLOBAL SCHOOL	13.5KM
SARLA BIRLA GYAN JYOTI SCHOOL	20.8KM
DELHI PUBLIC SCHOOL	12.8KM
SANSKRITI THE GURUKUL	13.3KM
DON BOSCO	4.4KM
COTTON UNIVERSITY	4.7KM
GUWAHATI COMMERCE COLLEGE	2.2KM
GAUHATI UNIVERSITY	13.4KM

OTHERS	Distance
ZOO CUM BOTANICAL GARDEN	950M
SHRADHANJALI KANAN	800M
GANDHI MANDAP	3.2 KM
PROTECH CENTRE	-KM

HOTELS	Distance
VIVANTA BY TAJ	6.7KM
NOVOTEL	4.6KM
THE LILY	6.5KM





..... ~ .....  
The Happening Tarun Nagar  
..... ~ .....



..... ~ .....

A Unique New World  
Where Location & Luxury meet your Living

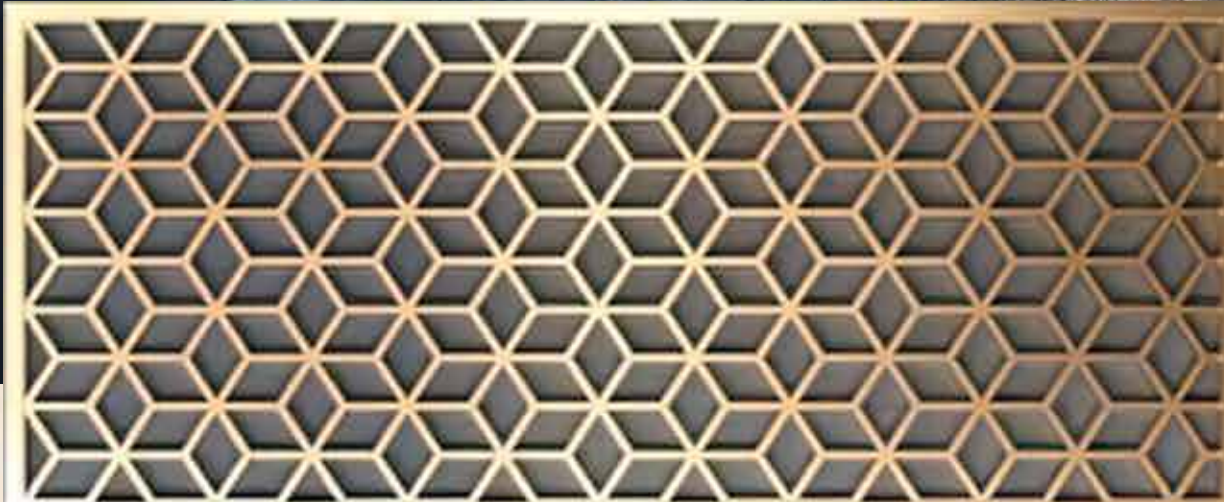
..... ~ .....



..... ~ .....

It's a World  
Designed to Experience Timeless Elegance

..... ~ .....



..... ~ .....

## Welcome to Protech Tarun Nagar

..... ~ .....

A world where large open spaces, luxurious greenery, a pristine podium, serpentine floral gardens, spacious apartments, a plush residents' club and futuristic amenities embrace you. And, the flagship landmark project of **Protech Group** awaits you.

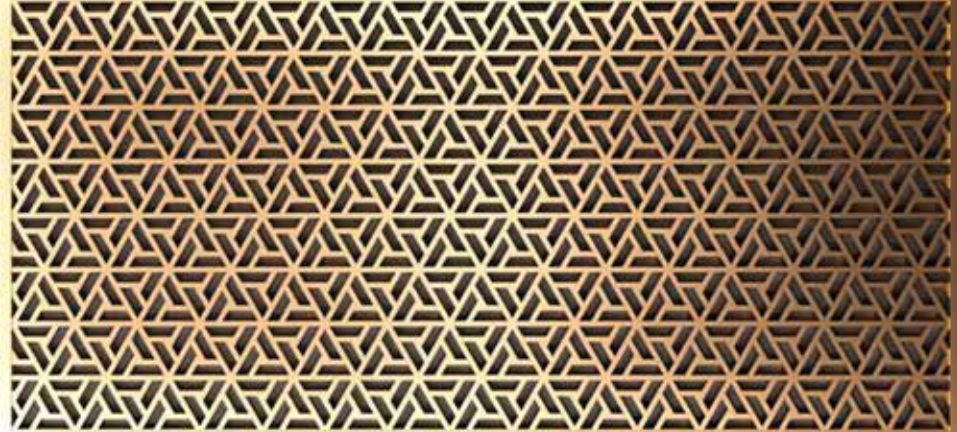
Be a connoisseur of this New World.



..... ~ .....

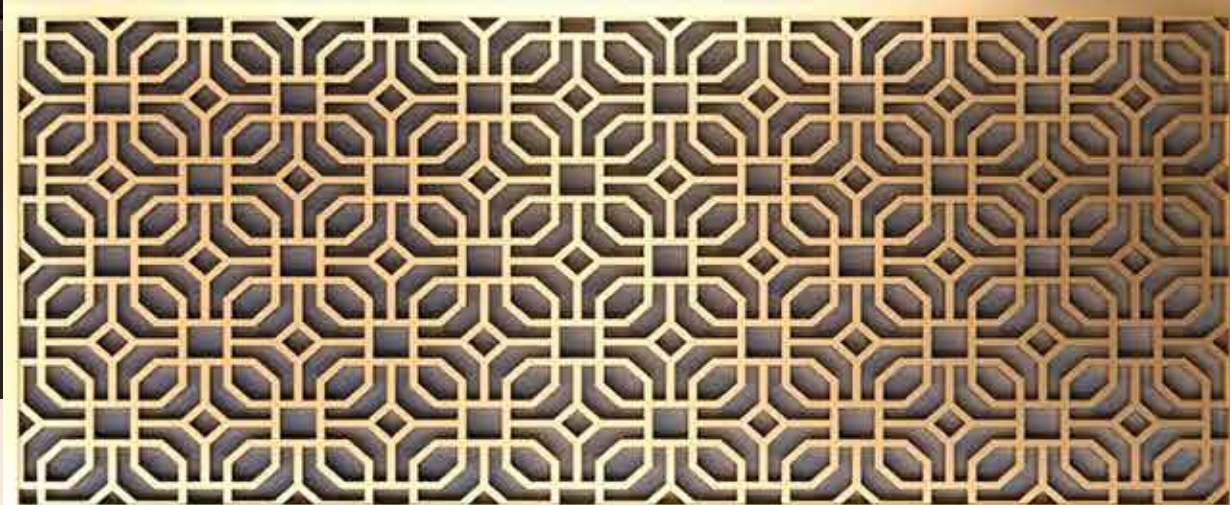
Fun-filled days  
for your little one are  
the real reasons  
to be Happy

..... ~ .....





ENTRANCE PLAZA

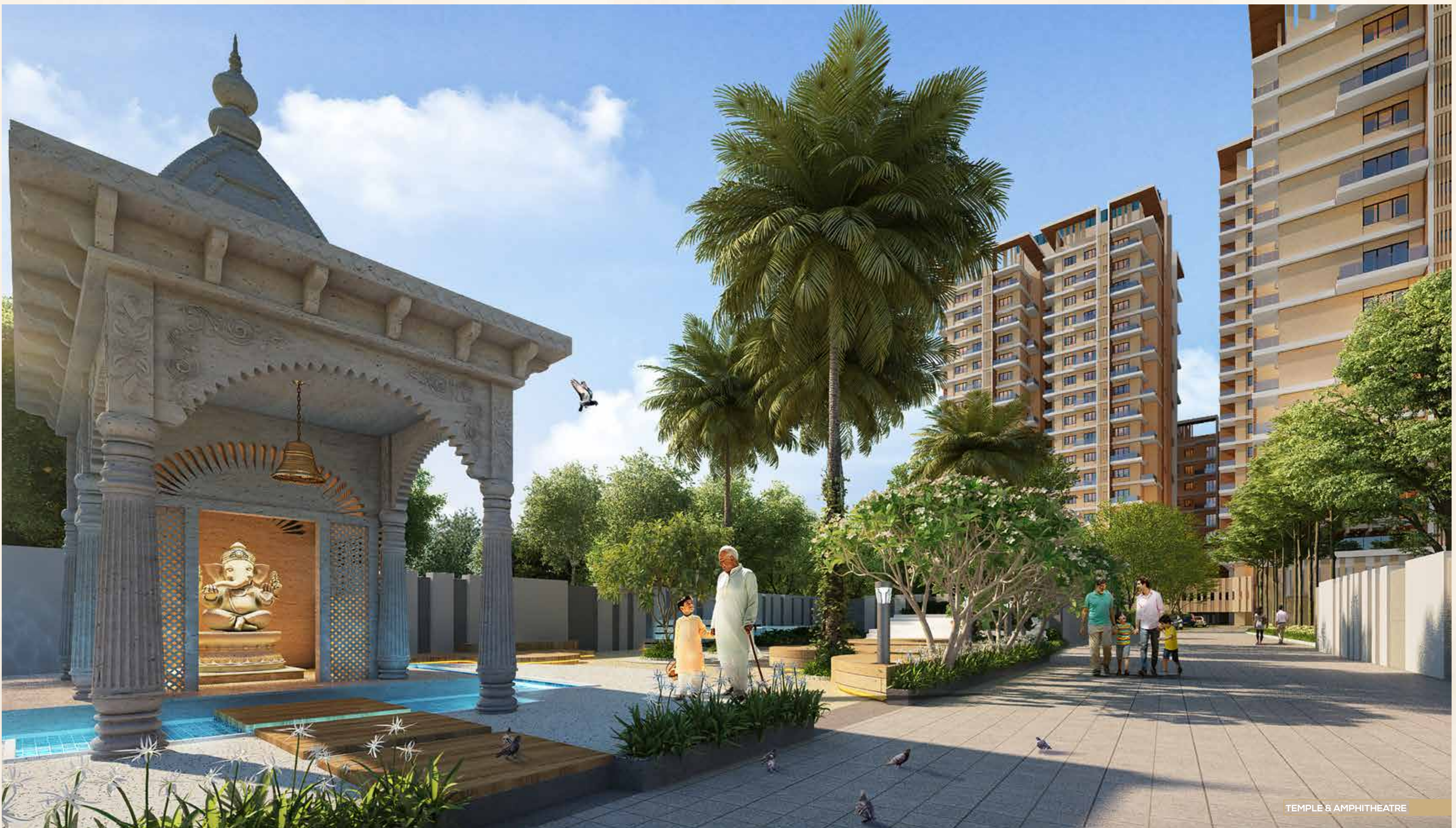


..... ~ .....

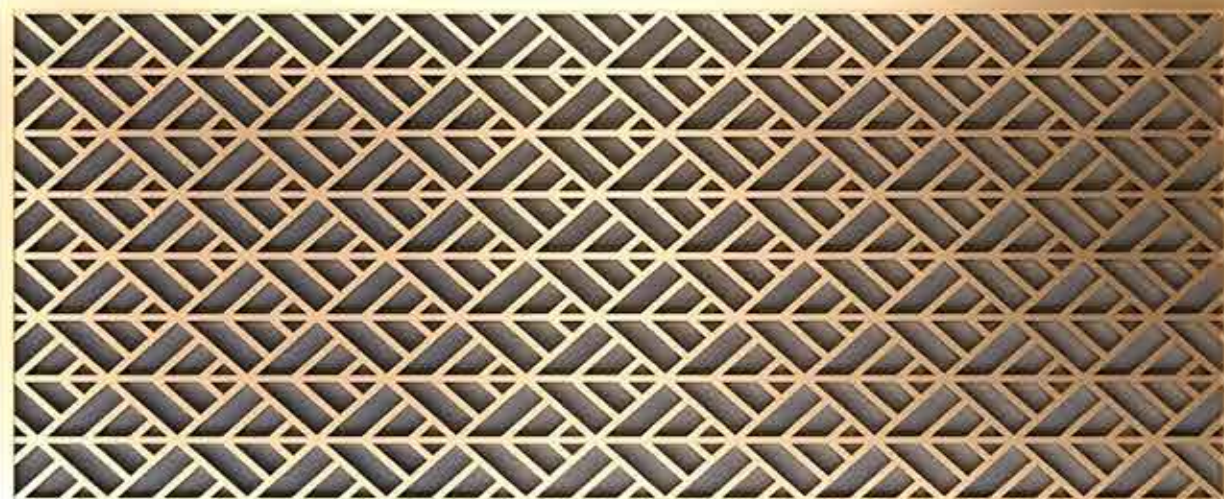
Selective in Every way  
& about Everything

..... ~ .....

State-of-the-art & one-of-its-kind, Multilevel Covered Parking and Open Parking facility are provided in the periphery of the building for the First Time in Guwahati.



TEMPLE & AMPHITHEATRE



..... ~ .....

Reconnect your soul  
& Transcend beyond earthly living

..... ~ .....

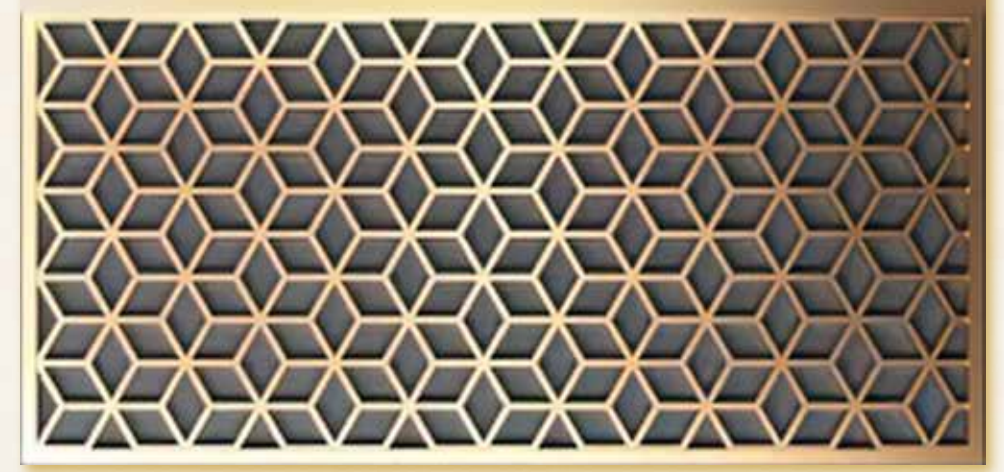


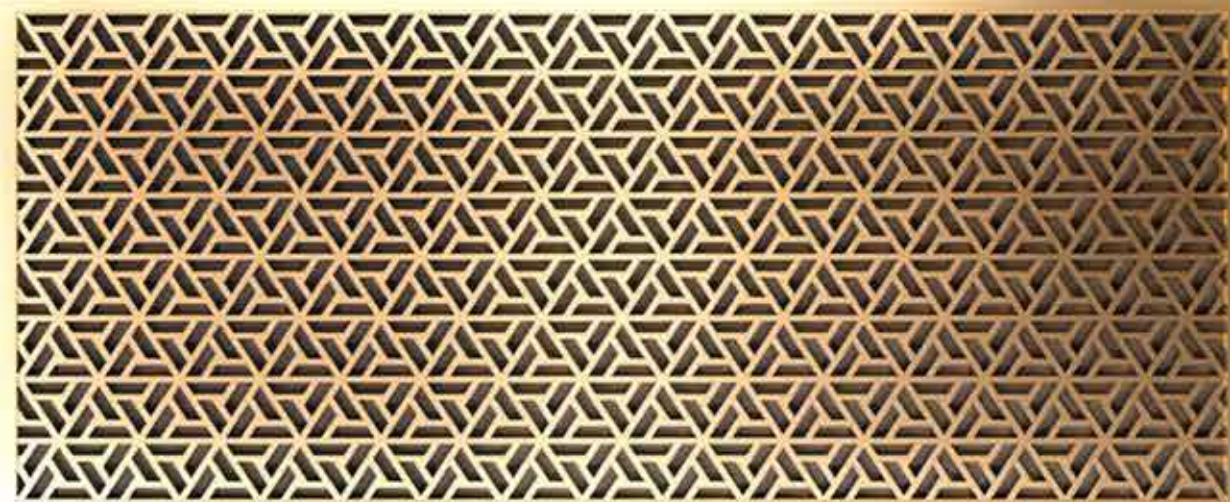
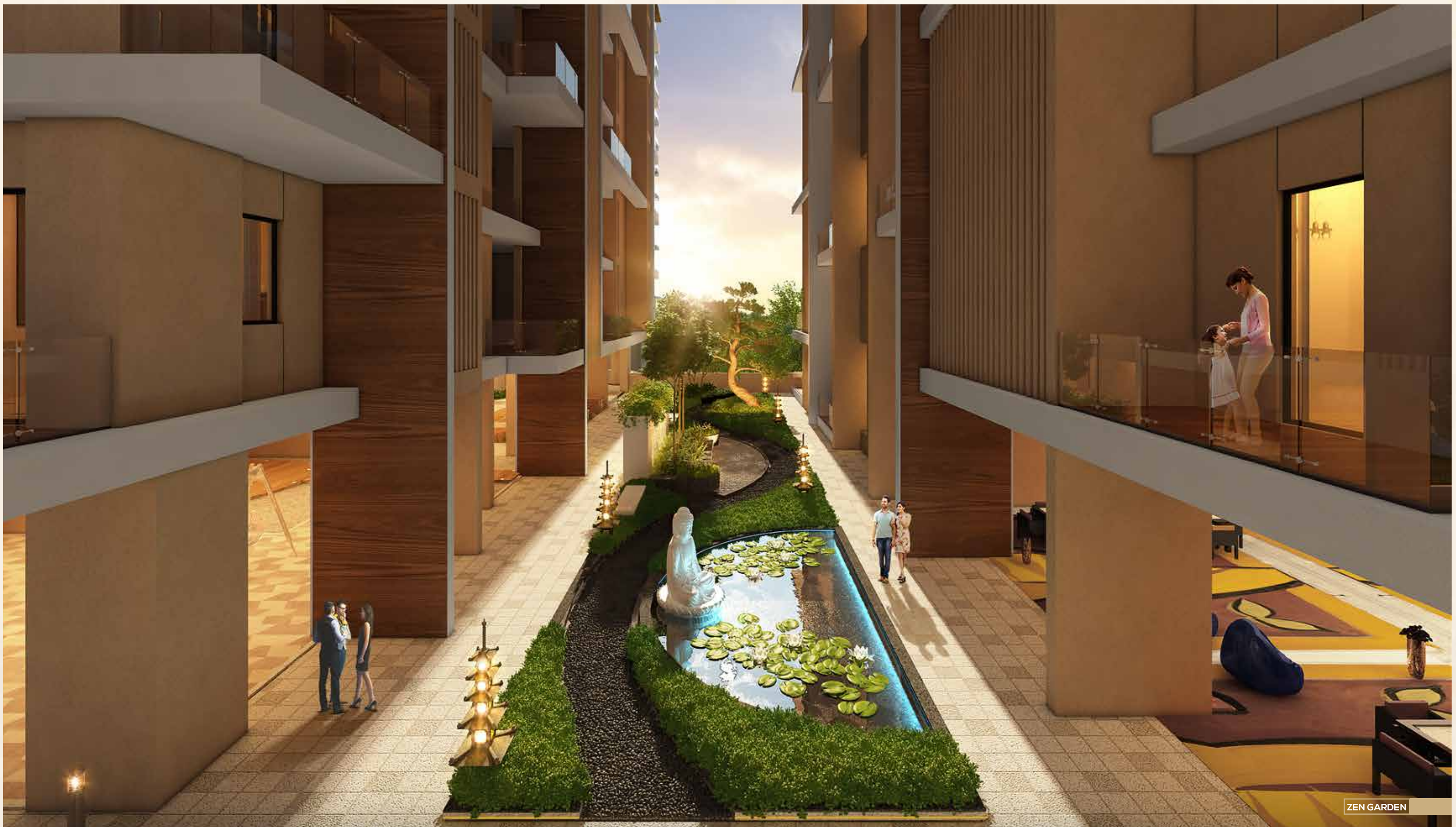
Podium Plan



Podium Amenities

- 1 Sand Pit
- 2 Kids Play Area
- 3 Open Gym
- 4 Water Feature
- 5 Patio
- 6 Sit-outs with Decks
- 7 Board Games
- 8 E-Lounge
- 9 Accupressure Pathway
- 10 Zen Garden
- 11 Aroma Therapy Garden with Sitting
- 12 Jogging Track
- 13 Open Multipurpose Lawn
- 14 Temple with Amphitheatre





..... ~ .....

Designed for the Soul  
Who fetch Greenness

..... ~ .....



REFLEXOLOGY PARK

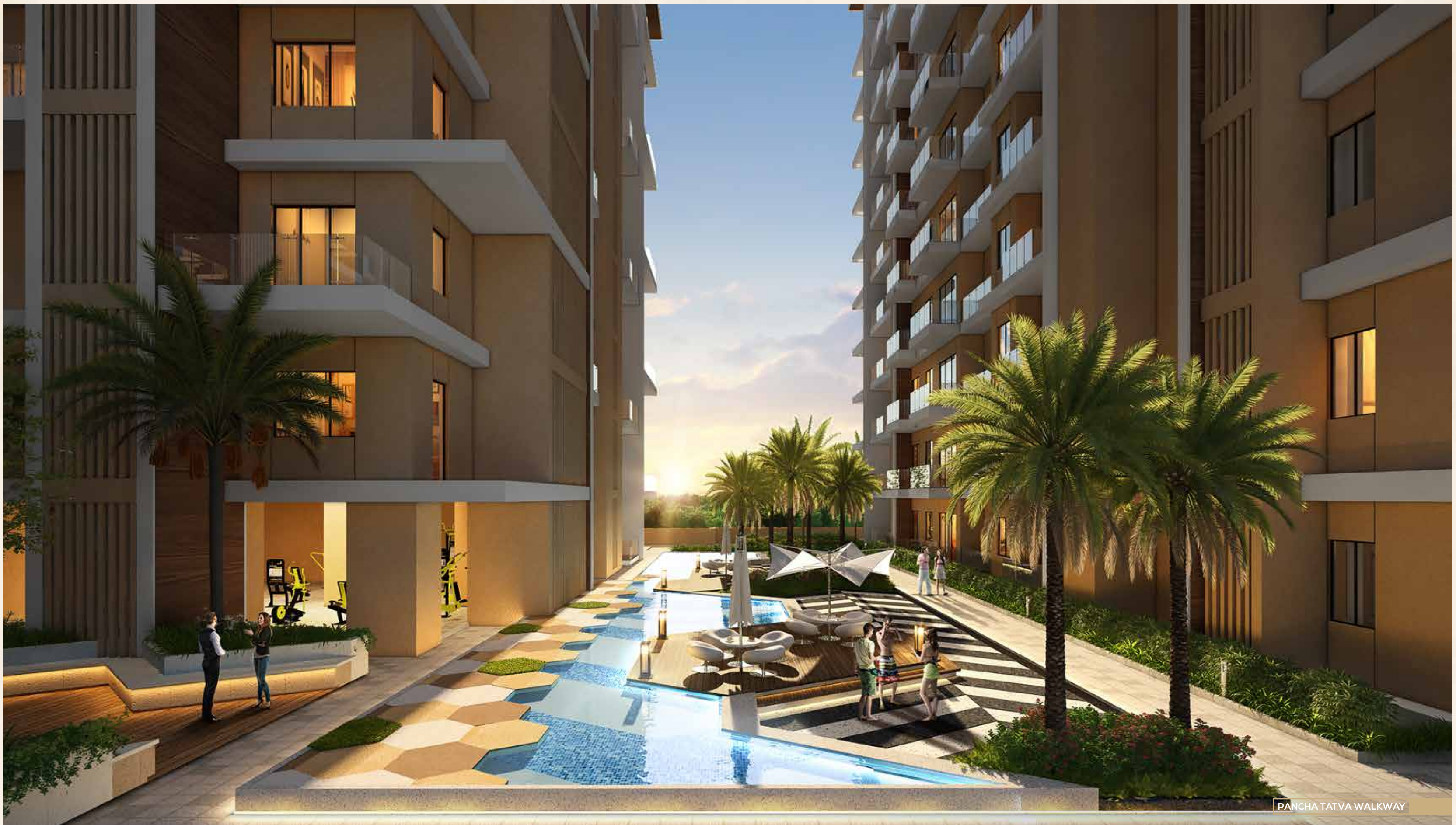


..... ~ .....

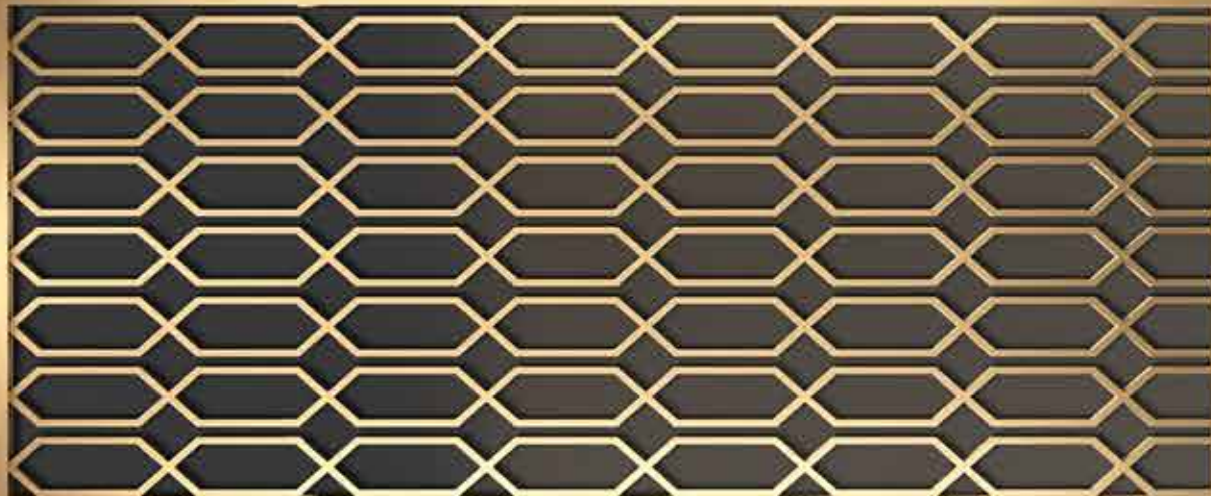
The Warmth & Richness of this landscape  
Can't be Expressed in words  
But to Feel

..... ~ .....

Street & Ambience lightening to offer Grand Night View



PANCHA TATVA WALKWAY



..... ~ .....

## Leisurely Luxuries

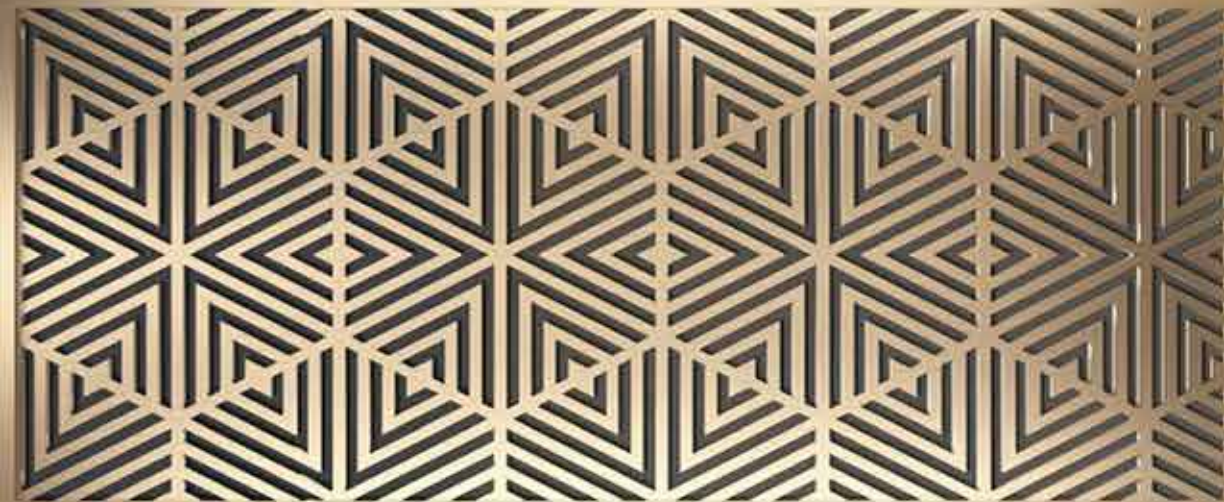
..... ~ .....

Jog around the podium, indulge in the games and activities, and unwind with your children at the Kid's Play area on the sunset terrace.

Calm your mind with meditation, wander around stunning views, or, just soak in the beauty and solitude of Nature. At the Podium level, you will encounter a host of interesting recreational activities.



HERBAL GARDEN & AMPHITHEATRE

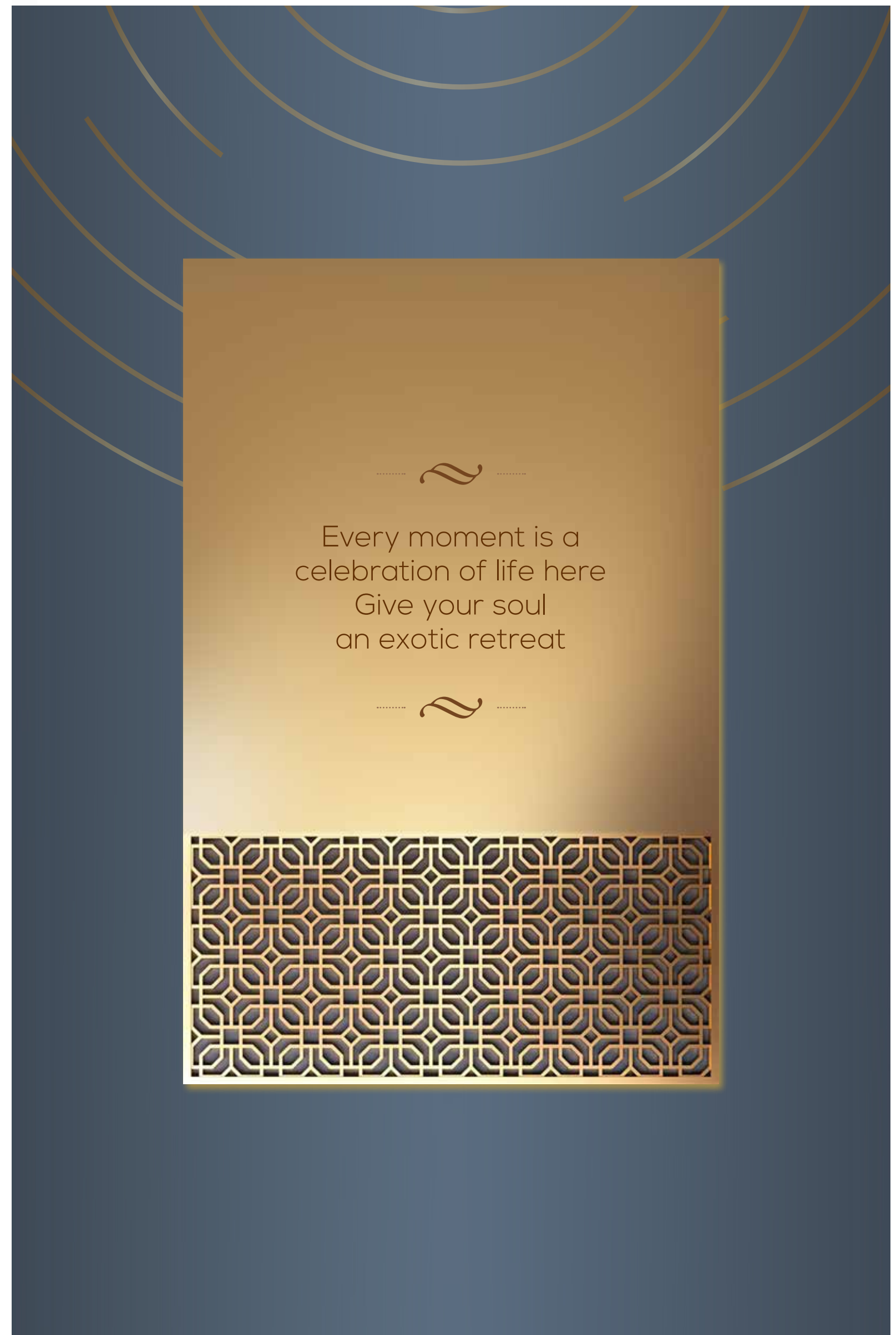


..... ~ .....

Bask in the Beauty

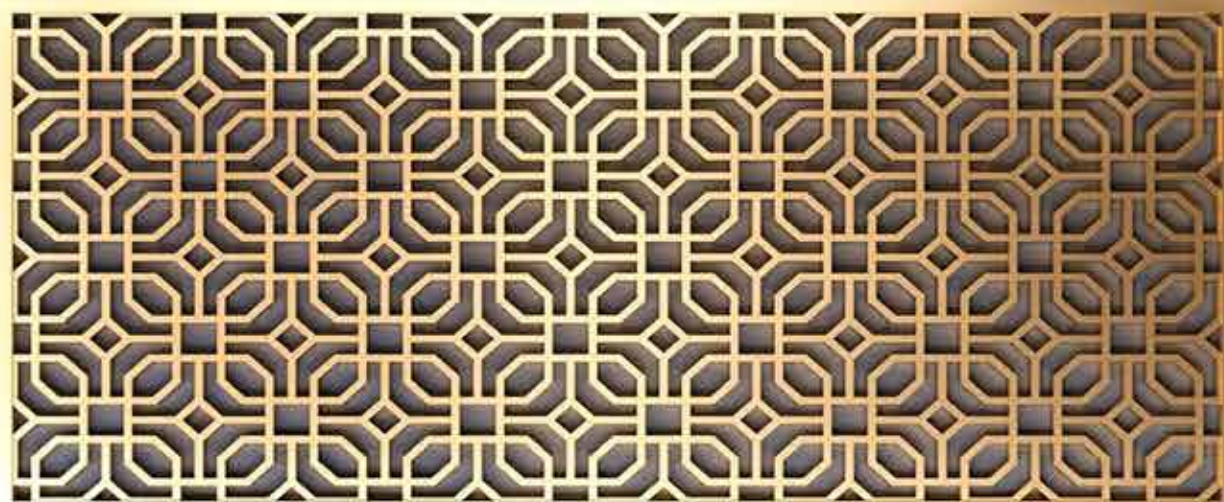
..... ~ .....

Various plant forms at the herbal garden are punctuated with interesting works of art. This garden not only adds architectural splendour but also captivates your core.





RECEPTION LOBBY



..... ~ .....

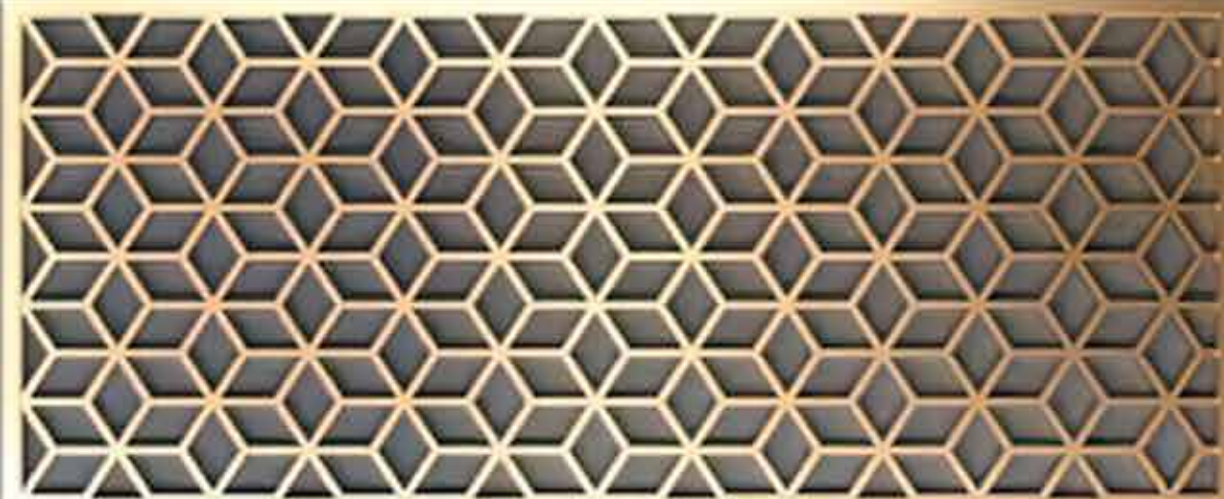
Grand Welcome  
At each arrival

..... ~ .....

Double height Entrance Lobby with waiting zone & enhanced security



MINI LOUNGE WITH MINI-GOLF (PUTTING GREEN)



..... ~ .....

Reflecting  
Grandeur all around

..... ~ .....



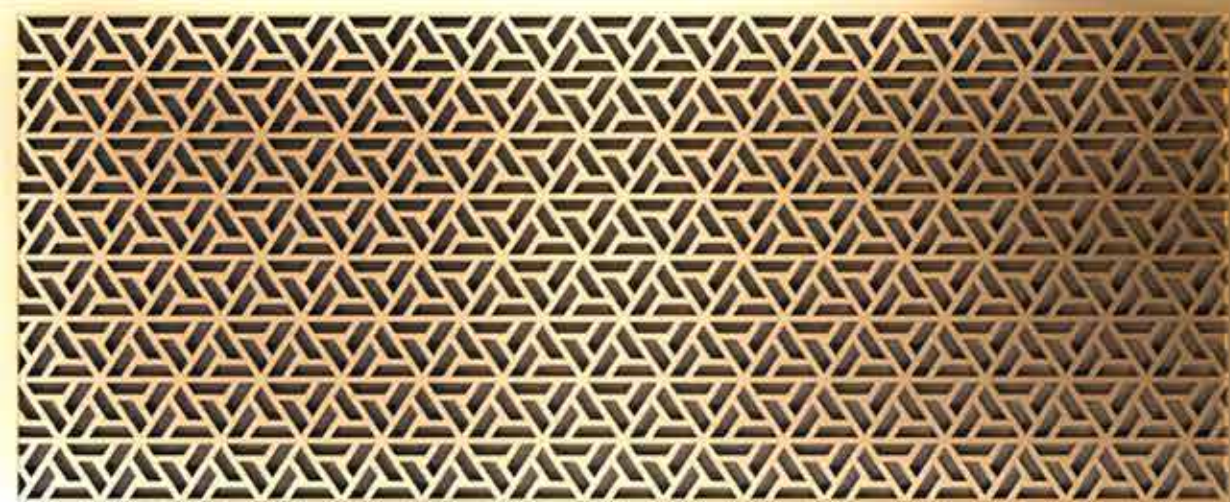
PODIUM OPEN GYM



..... ~ .....

The Body achieves  
What the Mind Believes

..... ~ .....

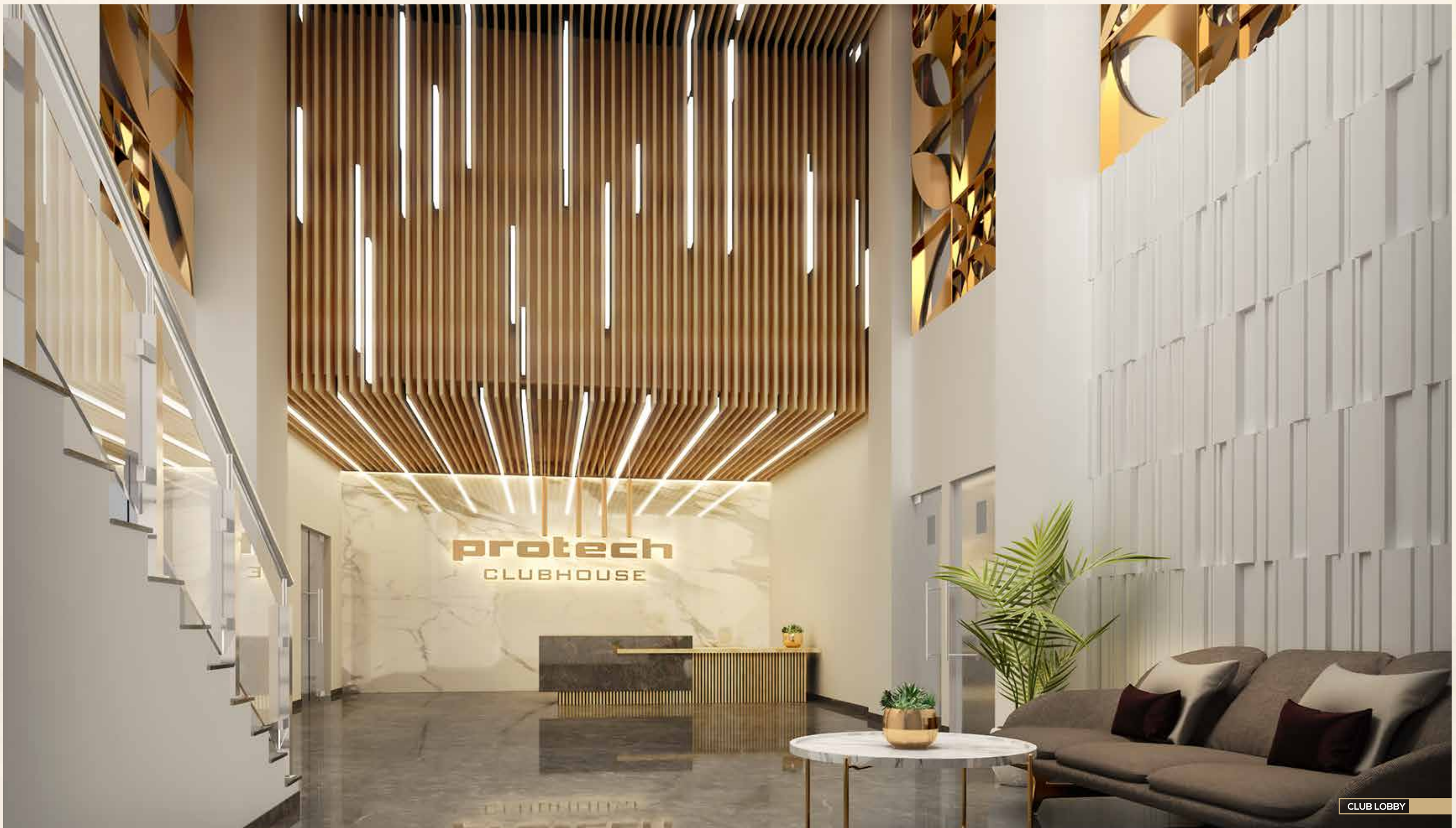


..... ~ .....

Bring back  
The memories of Excitement again

..... ~ .....

Multi-Purpose Podium of around 50000 Sq. Ft.



CLUB LOBBY



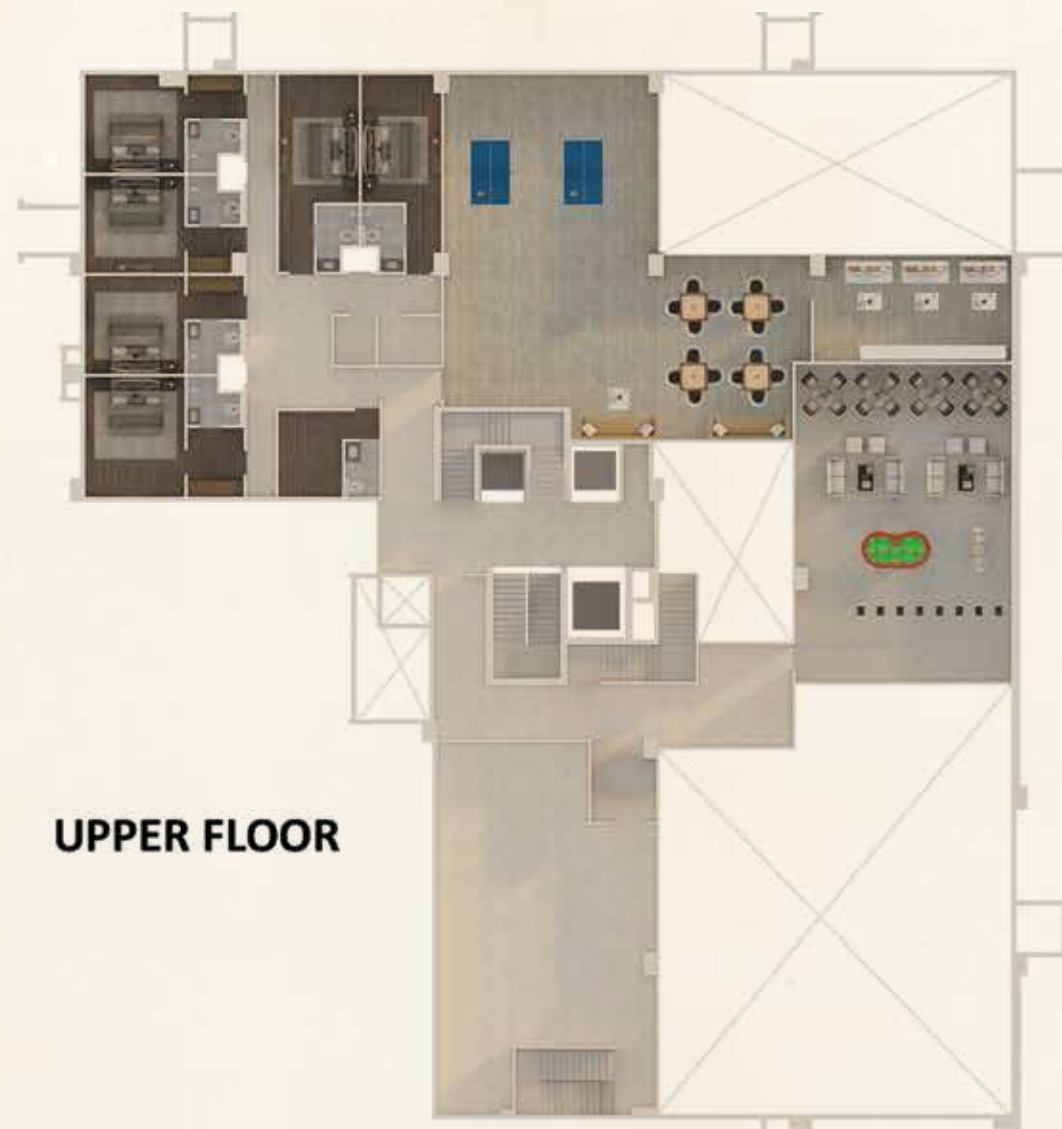
..... ~ .....

## Engaging Experiences

..... ~ .....

Watch your favourite films, jump into the cool comforts of the inviting pool, soak in the exquisite beauty of nature from the deck or workout at the gym. Party all day as you want and indulge in the sports of your choice.

Beautifully balancing activity, leisure and several delights await you here.



**UPPER FLOOR**



**LOWER FLOOR**

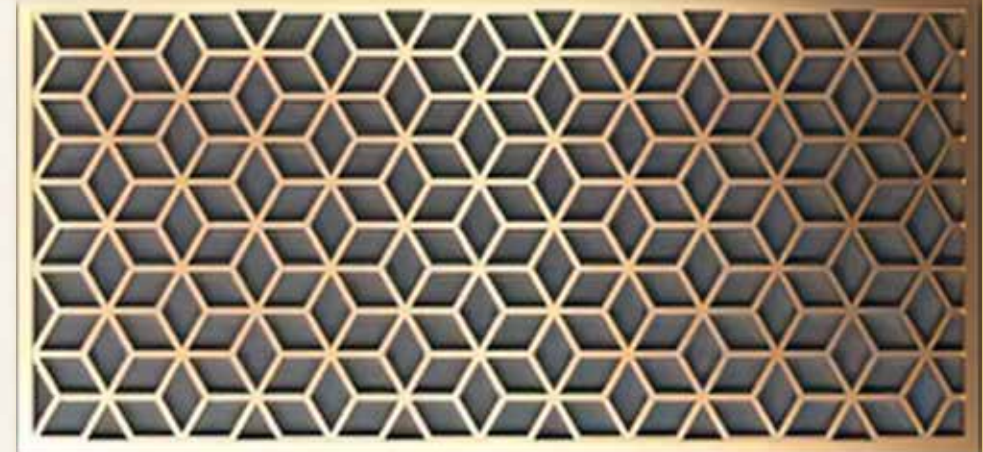
..... ~~~~~  
 Relax & Rejuvenate  
 at Protech Club  
 ~~~~~ .....

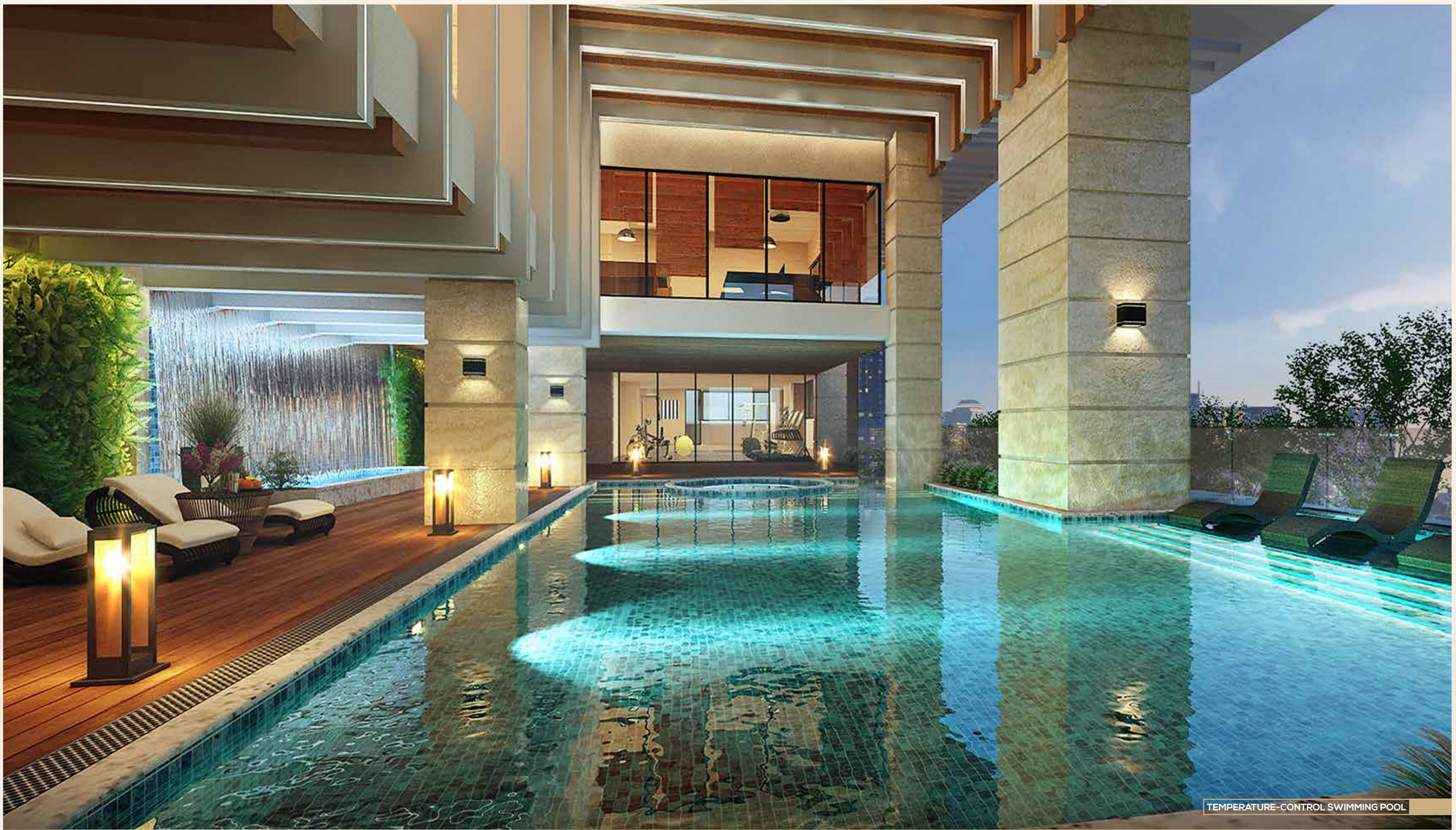
**LOWER FLOOR**

- 1 Double Height Lobby
- 2 Gymnasium
- 3 Pool Party Deck
- 4 Indoor Heated Swimming Pool
- 5 Mood Pond & Jacuzzi
- 6 Home Theatre/Conference Room
- 7 Music/Dance Room
- 8 Steam Room
- 9 Sauna Room
- 10 Badminton Court
- 11 Basket Ball Hoops
- 12 Double Height Banquet Hall

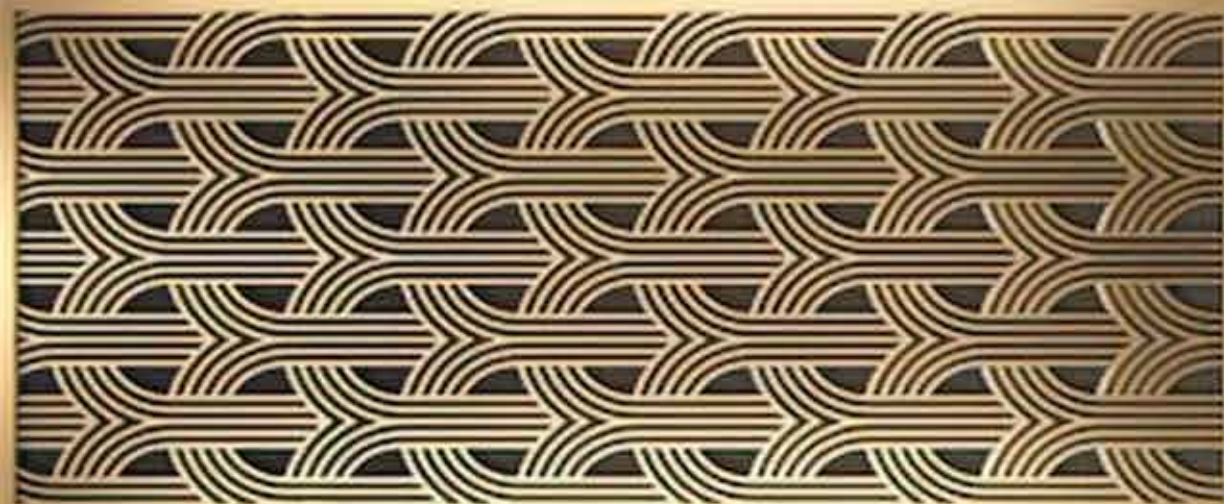
**UPPER FLOOR**

- 13 Fitness Studio (Yoga/Meditation)
- 14 Cafeteria
- 15 Gentlemen's Club & Kitty Party Space
- 16 Indoor Games-Air Hockey, Cards Area
- 17 Table Tennis
- 18 Pool Table
- 19 Library
- 20 6 Guest Rooms





TEMPERATURE-CONTROL SWIMMING POOL



..... ~ .....

For Swift Swimmers

..... ~ .....

Dive with your friends and family on the clear water against a backdrop of rolling greens and activity zones.



LOUNGE



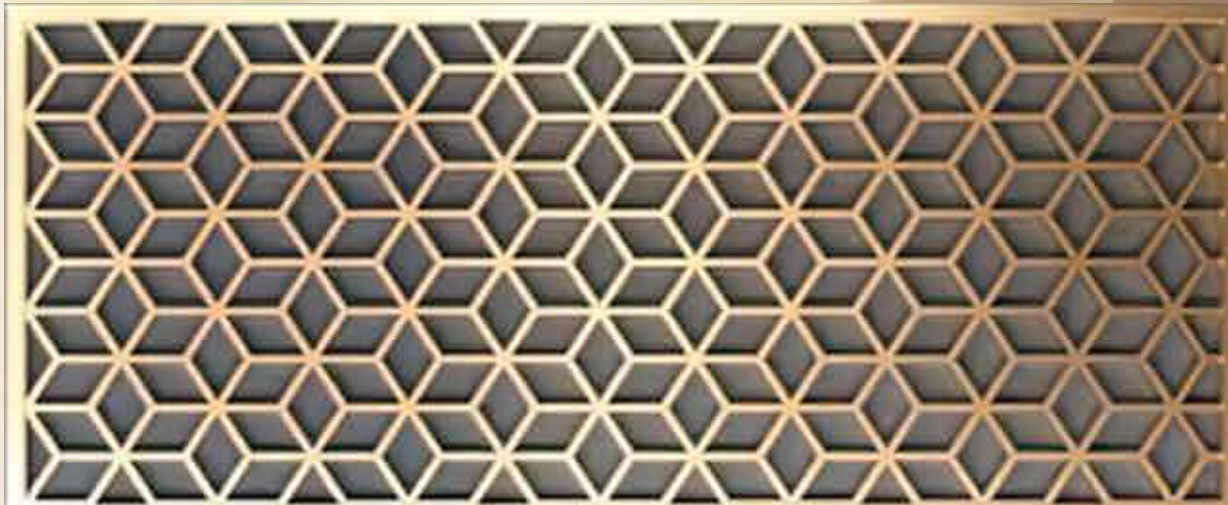
..... ~ .....

Relax & Unwind yourself  
To keep weariness at bay

..... ~ .....



DANCE ROOM



..... ~ .....

Your Passion finds Space here  
Bring out your love for Art

..... ~ .....



MUSIC ROOM



..... ~ .....

Now, organise a Gig for yourself anytime  
& Jam with your friends

..... ~ .....



GYMNASIUM



..... ~ .....

State-of-the-art Gymnasium  
For the fitness freak like You.

..... ~ .....



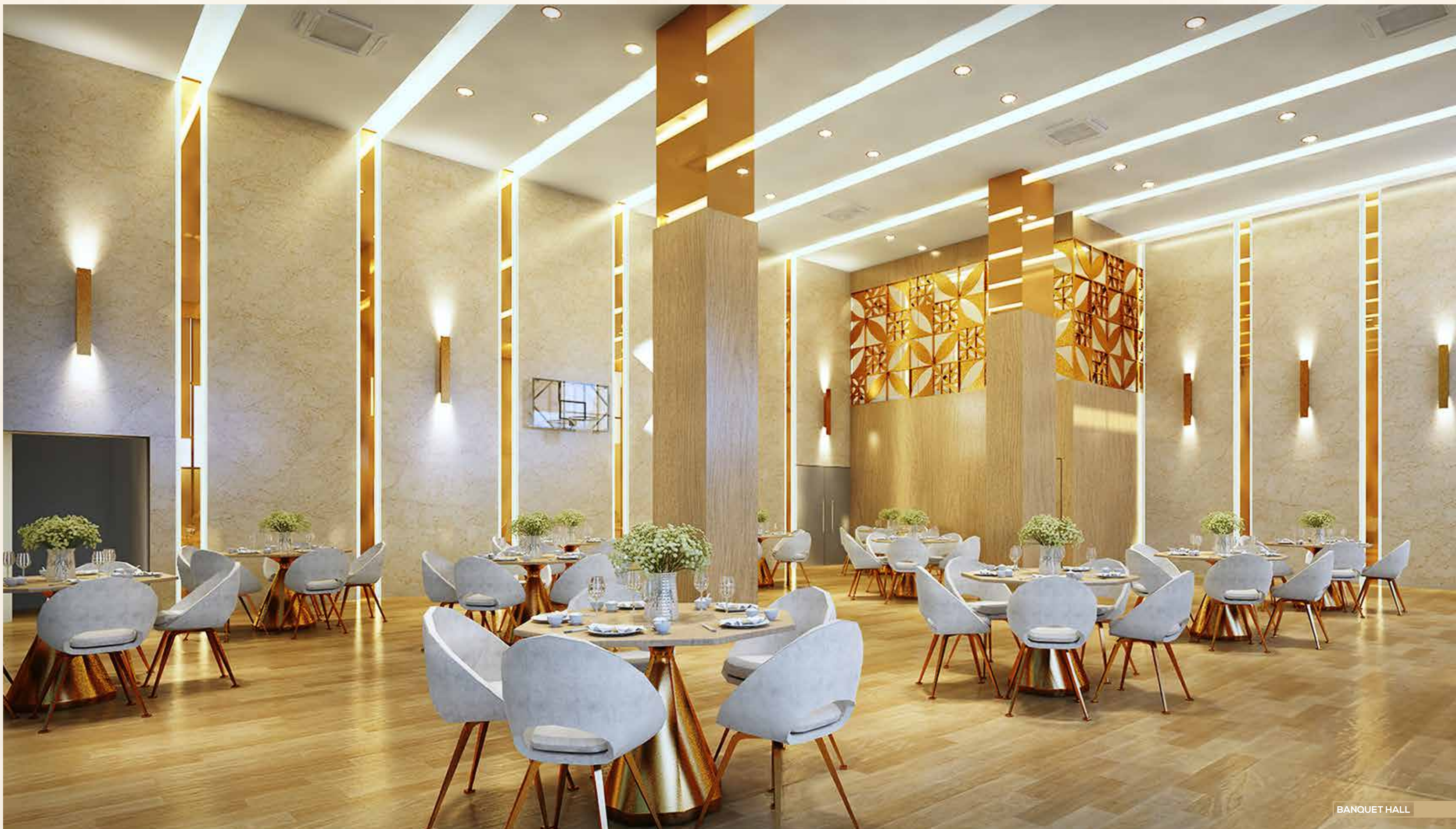
INDOOR GAME ROOM



..... ~ .....

Take the leap  
or, Miss the Chance

..... ~ .....



BANQUET HALL



..... ~ .....

Any occasion  
is good enough

..... ~ .....

Perfect for your parties, receptions, reunions, and more... The 22ft tall (double-height) multipurpose hall, podium, and pavilion come with a pre-function area that can be utilized to suit your different needs.

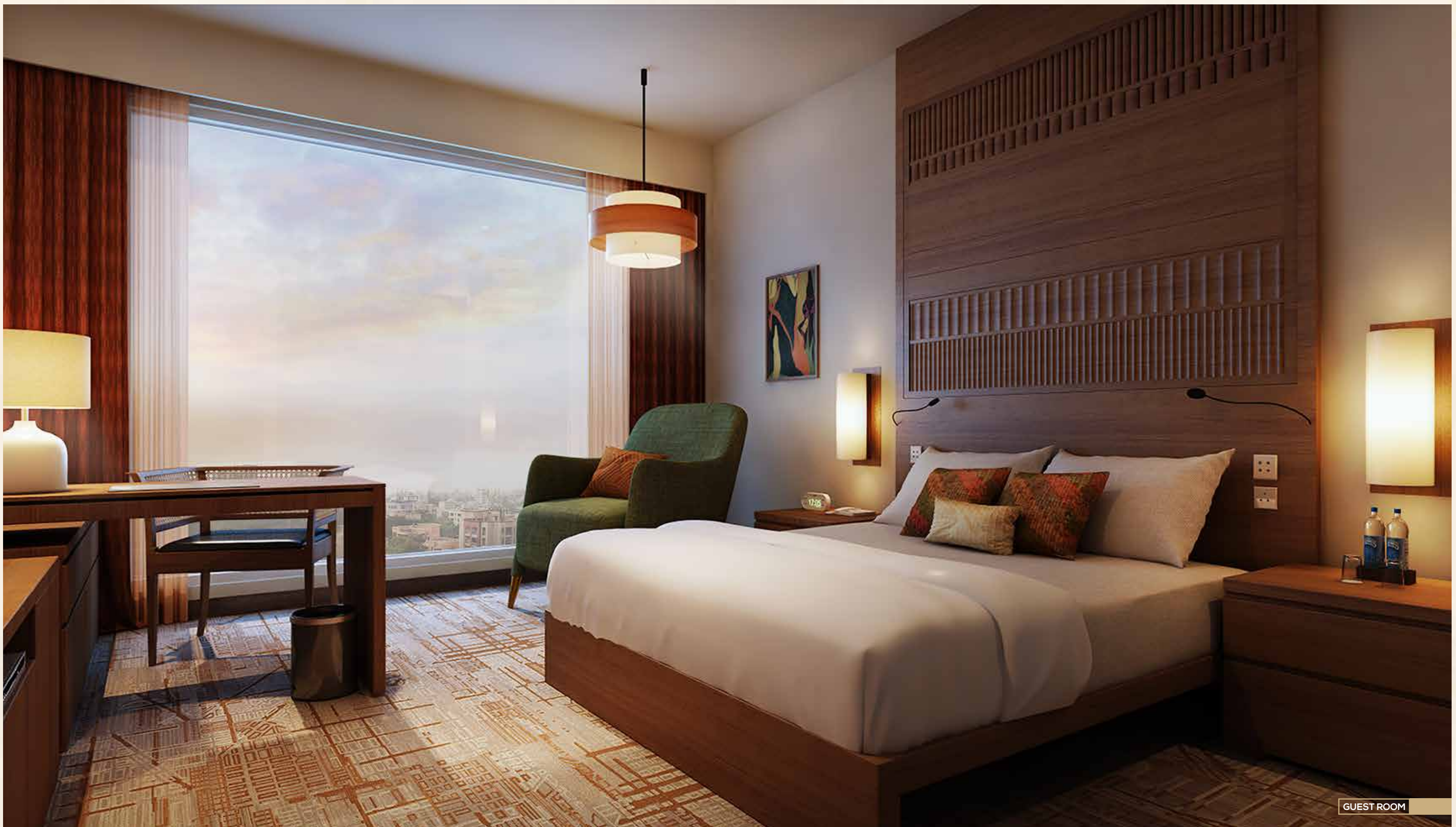


LIBRARY AND CO-WORKING SPACE

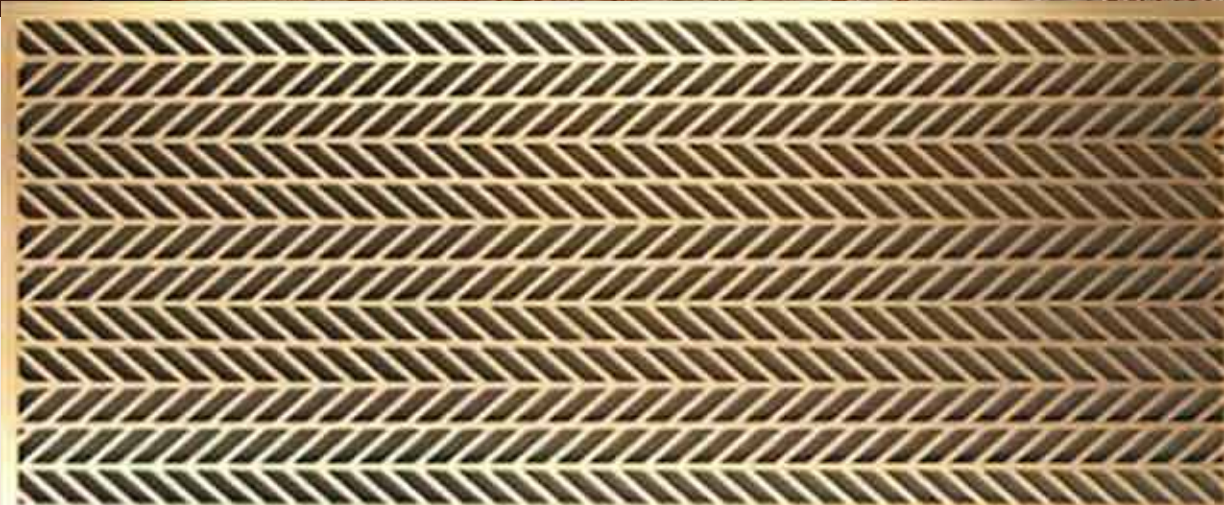


Wake your inner being up  
With the rays of Wisdom

Away to your 'Quiet spot' with a Book for your company.



GUEST ROOM



..... ~ .....

Reimagine Luxury  
With the plethora of Space

..... ~ .....

Impress your guests with stay @ club of Protech Tarun Nagar which is not less than any Resort Living.



..... ~ .....

Pamper your Body, Mind & Soul

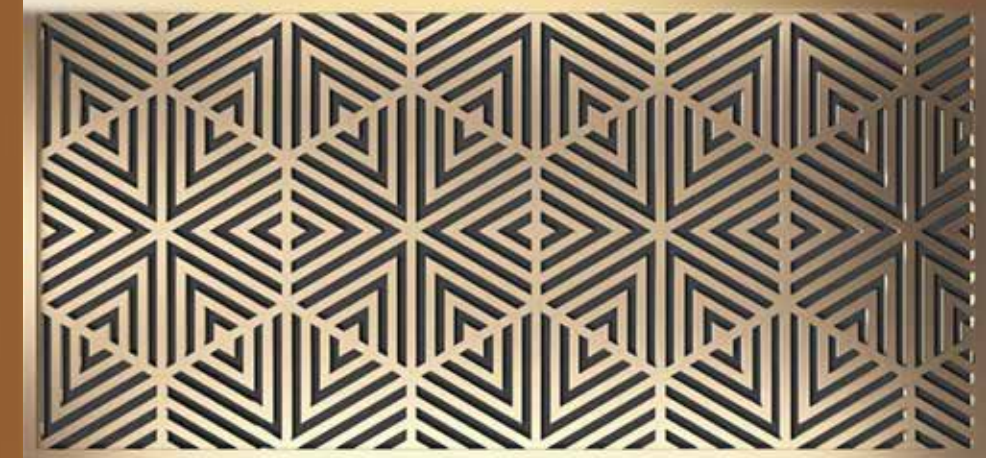
..... ~ .....



..... ~ .....

An Addition  
To Your  
Luxury Collections

..... ~ .....



Special Edition  
homes for  
Super Special  
Lifestyle

..... ~ .....  
Garden Homes  
..... ~ .....

- Private Organic Garden
- Personal Lift
- Jacuzzi (Personal Jacuzzi)  
/ Steam Box
- Expansive view of the podium  
and clubhouse

..... ~ .....  
Sky Villas  
..... ~ .....

- Sky Lounge
- Sky Garden / Deck
- Personal Lift
- Jacuzzi (Personal Jacuzzi)  
/ Steam Box

..... ~ .....  
Duplex  
..... ~ .....

- Double Height Living Area
- Internal Lift
- Internal Staircase

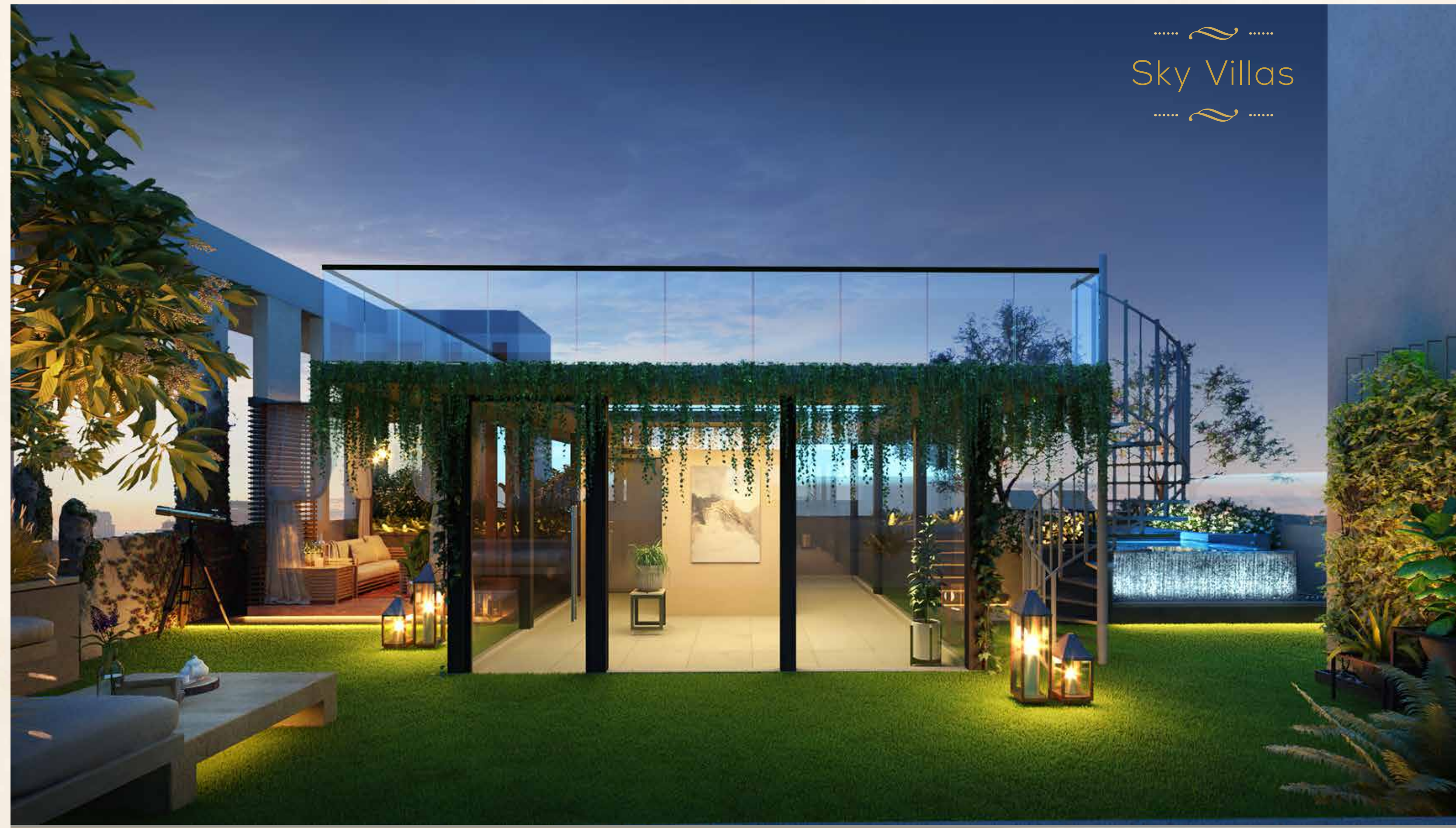
..... ~ .....  
Garden Homes  
..... ~ .....



..... ~ .....  
Podium Side Living  
..... ~ .....

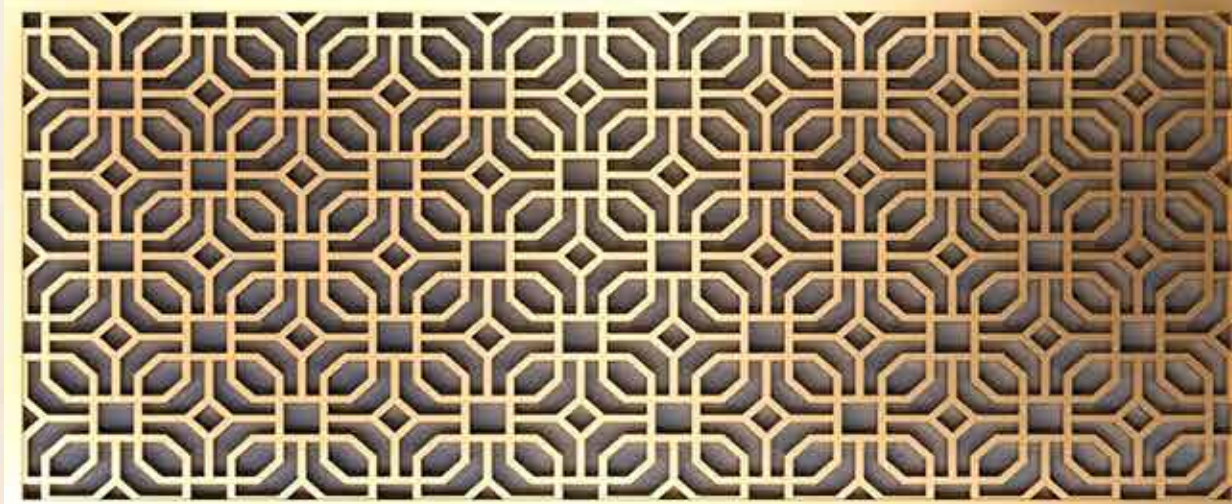
Watch greenery unfold in front of you as the birds chirp and the ducks waddle to enrapture your soul. Go for a boat ride over the shimmering water. Test your angling skills. Jog around this unspoiled freshness. Let the lake be where you are at peace with yourself.

..... ~ .....  
Sky Villas  
..... ~ .....

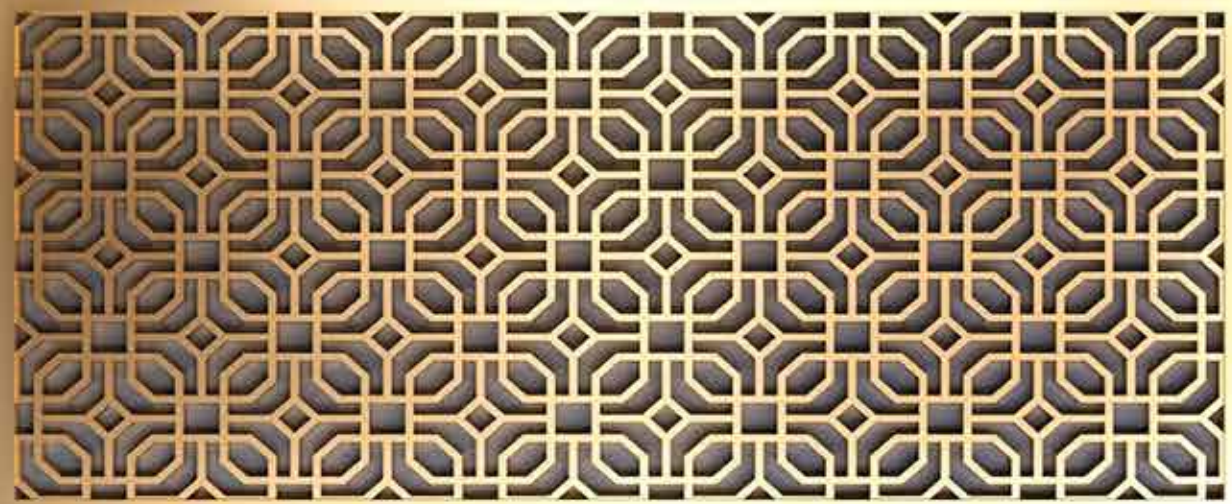


..... ~ .....  
Reason to Revel  
..... ~ .....

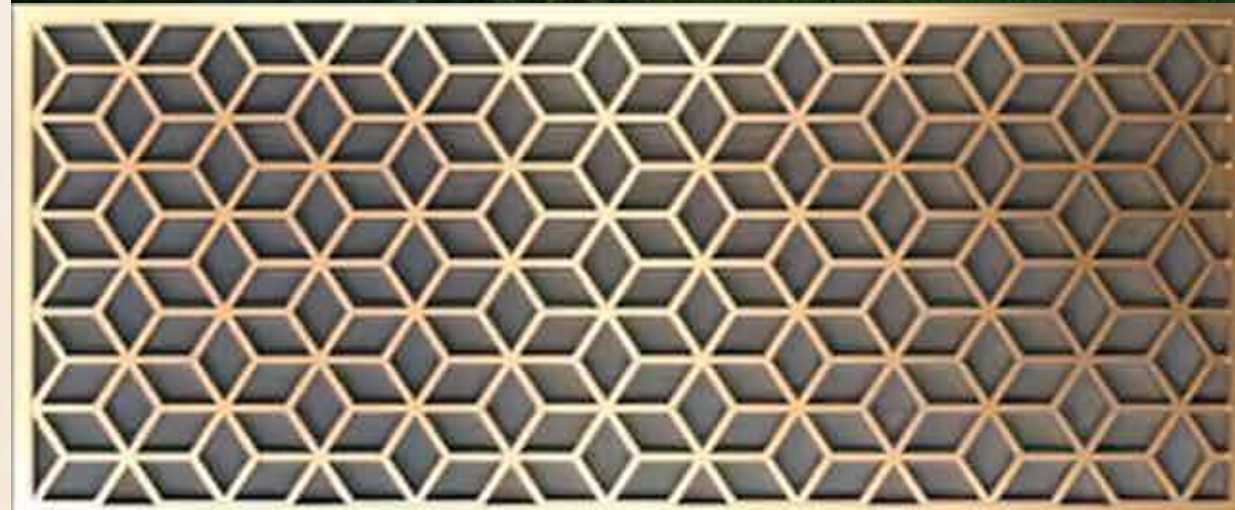
At the open-air terrace, there's abundant space for you to organize a private party. Gather your friends and family for gala events at the Celebration Terrace. There's a Lounge for you to enjoy matches or Films and to gaze at the beautiful stars and the night sky for enjoying a panoramic view of the sky



..... ~~~~~  
It's an Oasis where Serenity meets Harmony  
~~~~~ .....



..... ~~~~~  
Dip in True Essence of Luxury  
~~~~~ .....

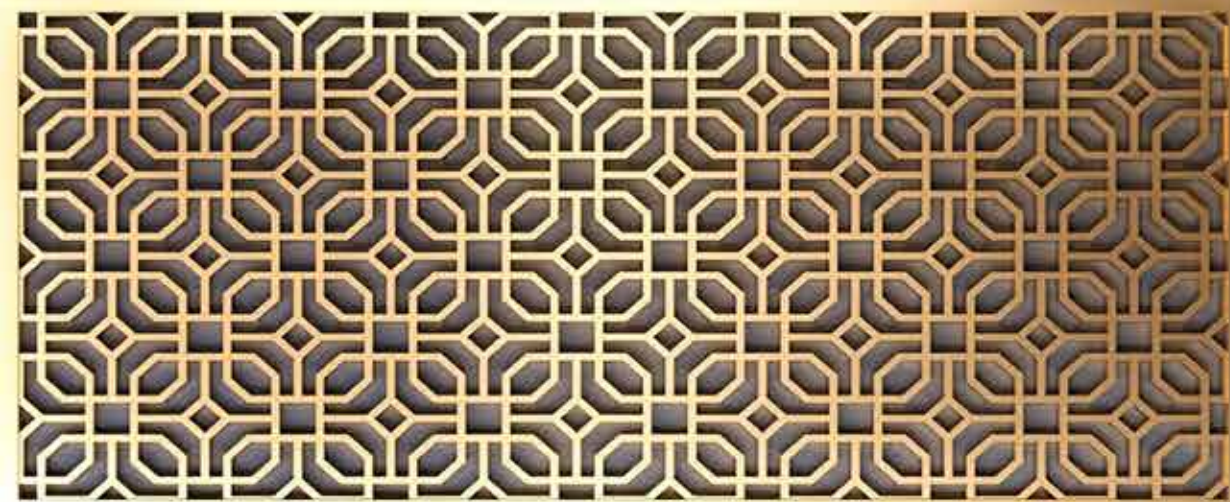
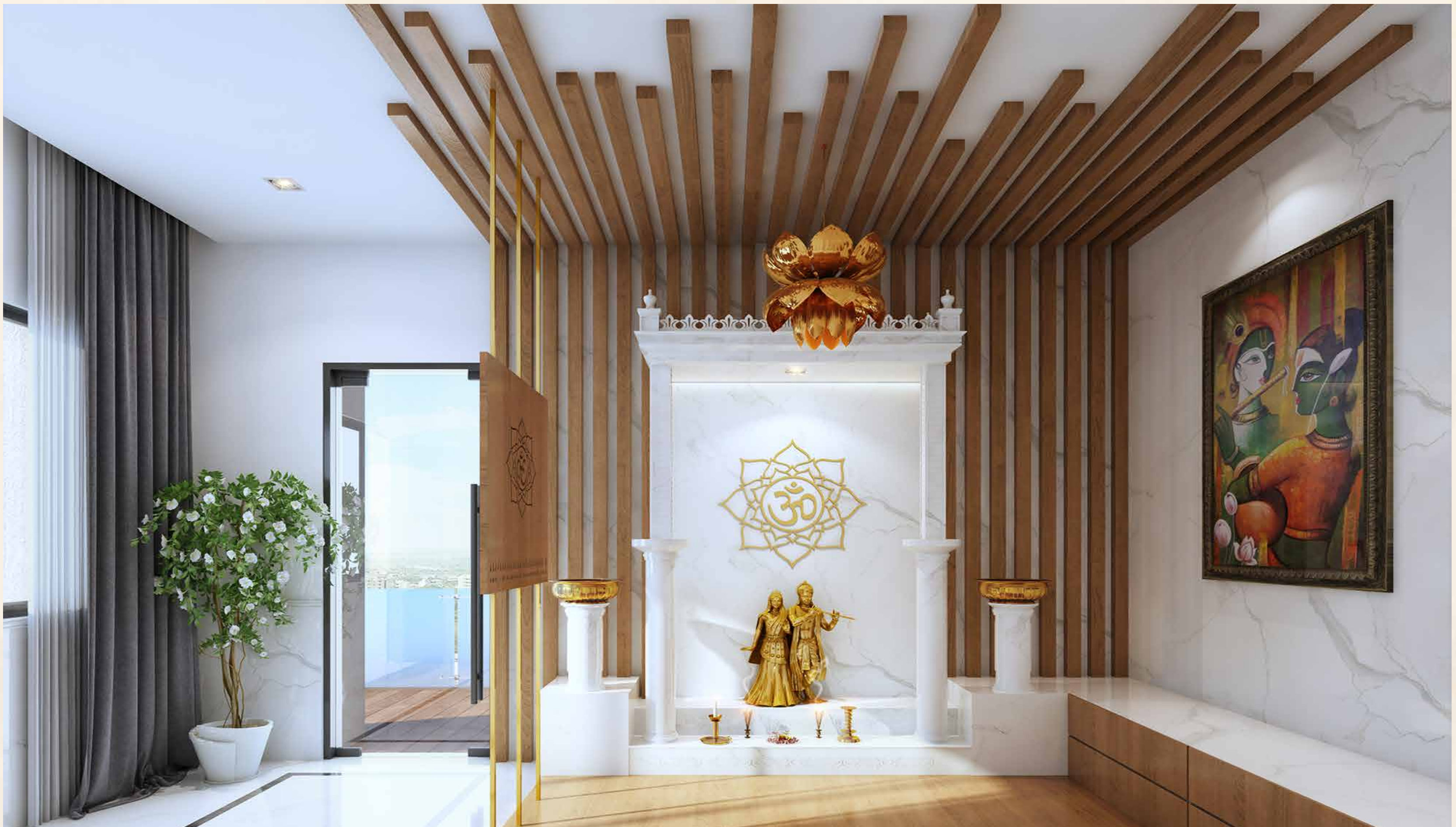


..... ~ .....

Exquisiteness is  
When inside is as Beautiful as outside.

..... ~ .....





..... ~ .....

Immerse yourself  
In the Divine power  
that brings Immense Positivity in Life.

..... ~ .....

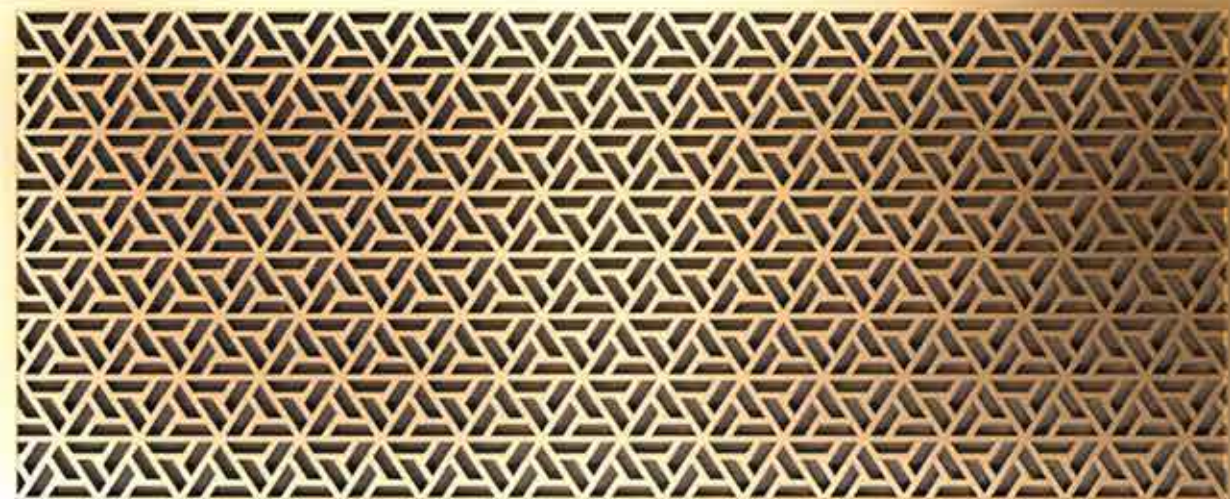
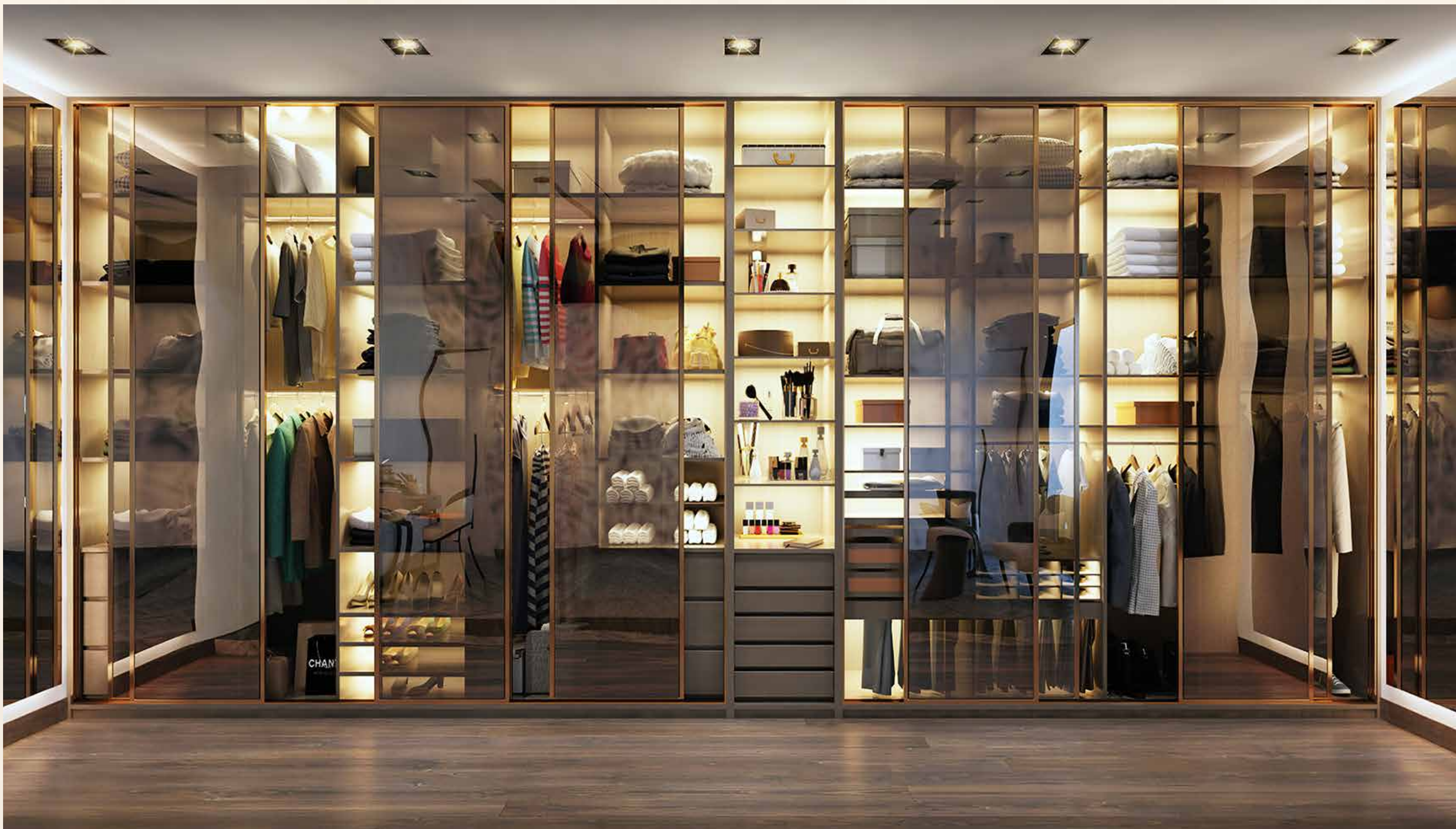


..... ~ .....

Reimagine Luxury  
With the plethora of Space

..... ~ .....

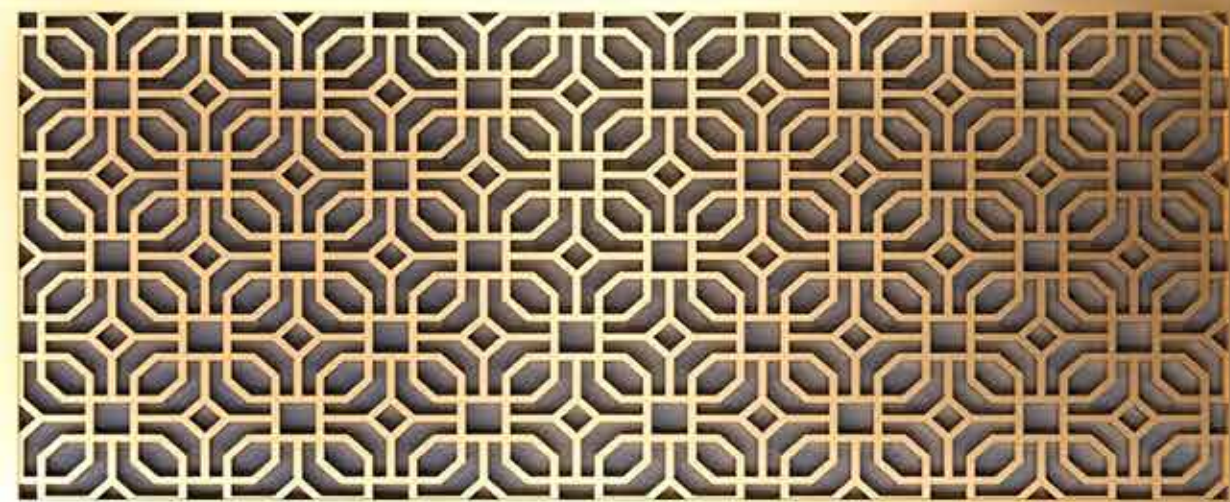
1. Easy to design interiors
2. Smart & Intelligent layout



..... ~ .....

Deck yourself up  
For every occasion

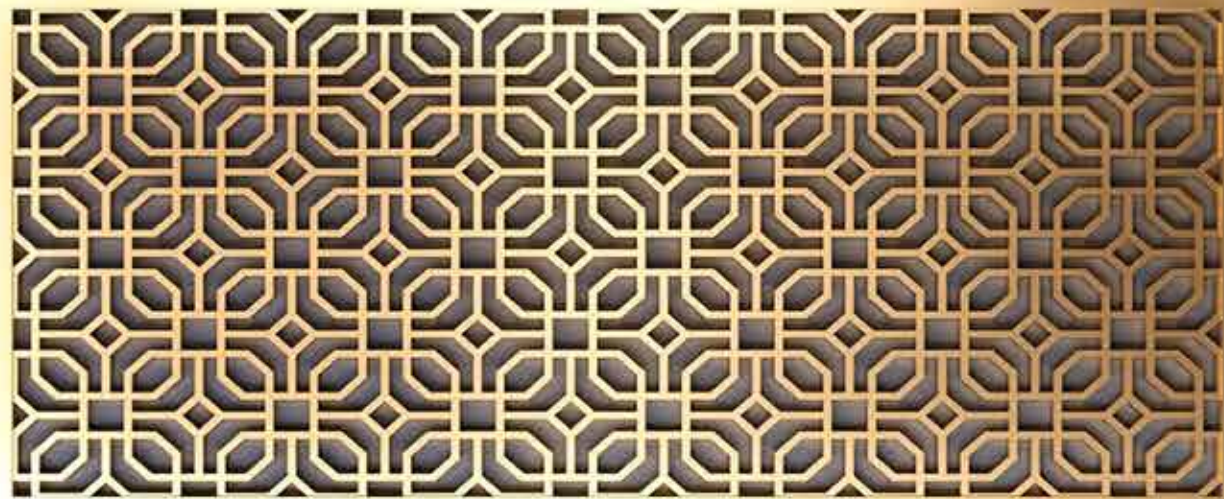
..... ~ .....



..... ~ .....

It's True Elegance  
That complements your Choice

..... ~ .....

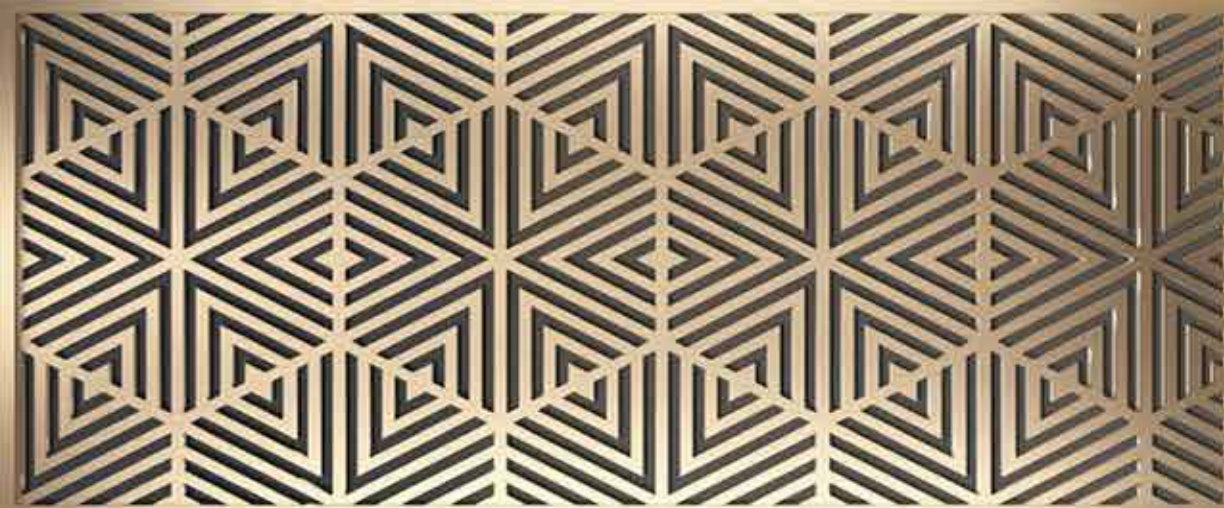


..... ~ .....

Let Luxury linger on

..... ~ .....

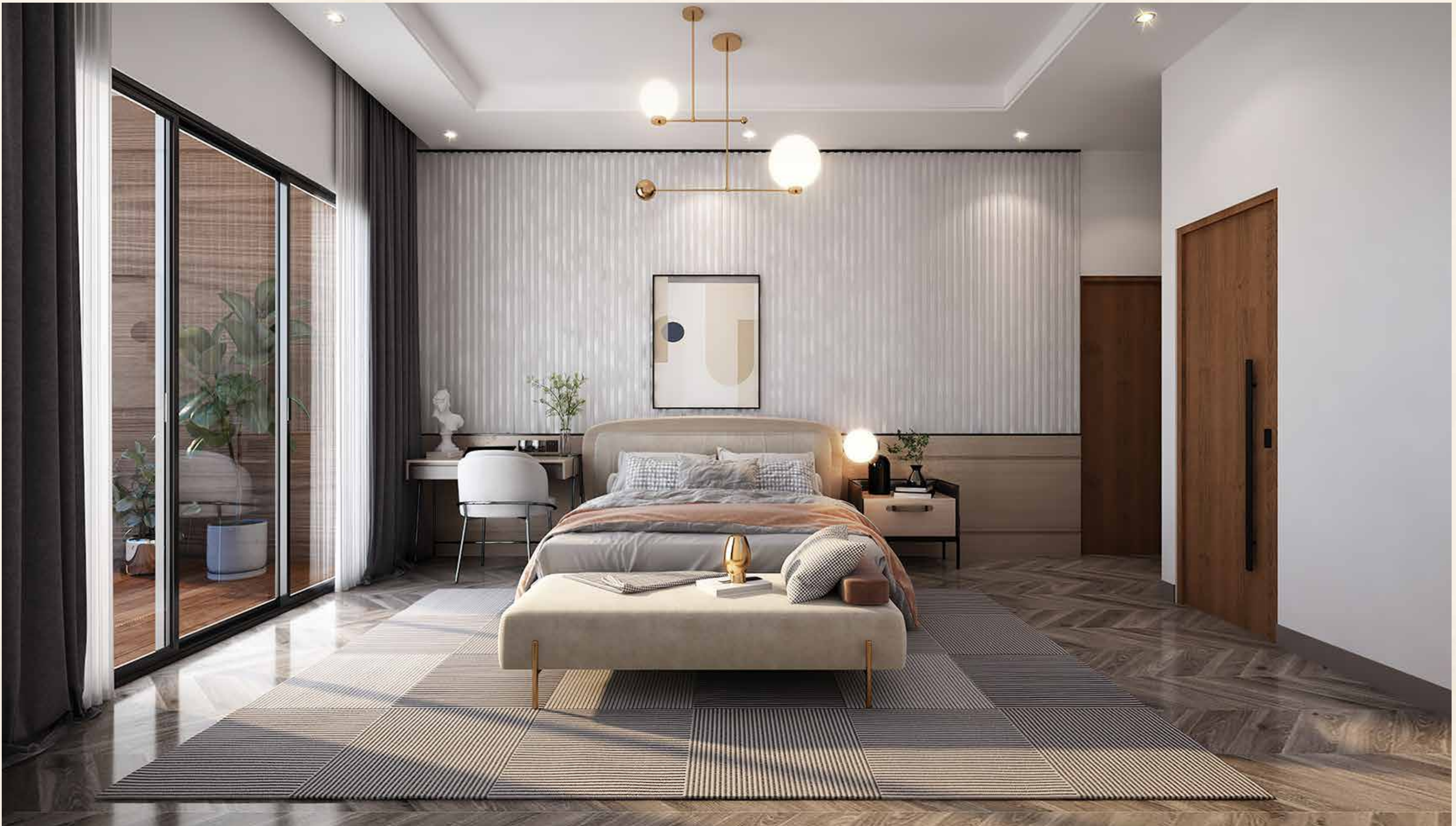
A generous expanse for your dreams to unfold and take shape. There's space for a large dining table and room for both formal and informal seating for you to enjoy those little luxuries at home. There's space for a private bar cabinet that showcases your spirits or use it as creatively as you want.



..... ~ .....

Thoughtfully designed Interiors  
Reflecting abundance of Luxury.

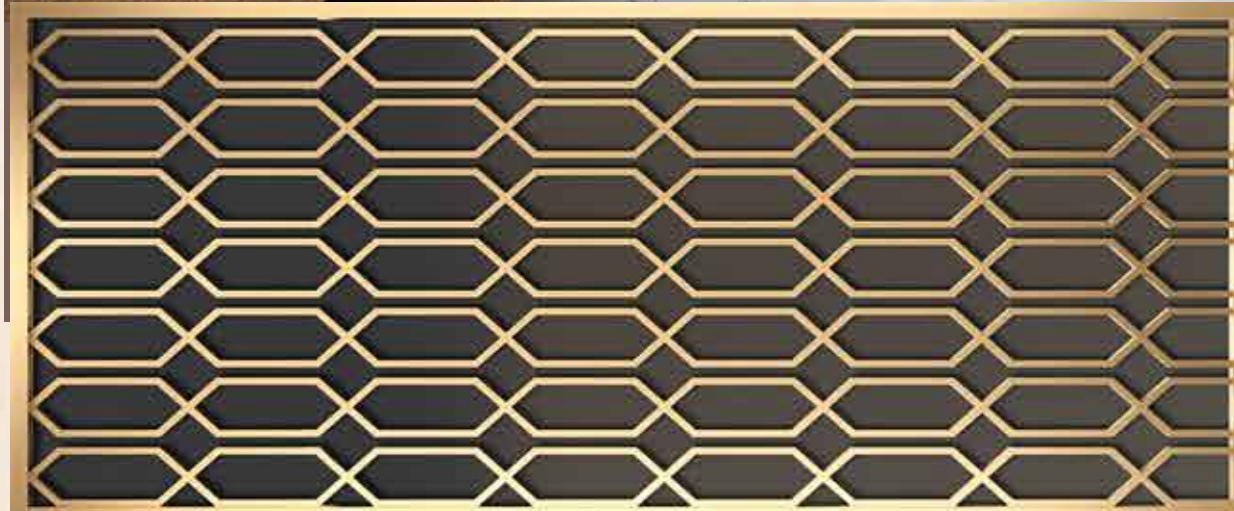
..... ~ .....



..... ~ .....

Where Morning starts with  
The soft beams of the Sun.

..... ~ .....



..... ~ .....

Rooms that speak to You

..... ~ .....

# Site Plan

## LEGEND

1. Floating Mandir
2. Deck Area
3. Feature Wall
4. Play Area
5. Open Parking



# Highlights of the Project

- Centrally located: Connected with GS Road, Zoo Road and Rajgarh Road
- Vastu Compliant flats.
- Clear Height of ~11' ft per floor \*
- Double Height terrace
- Staff Quarter with attached toilet.
- Three side Open Apartments
- VRF Air Conditioner provision
- Door height of 8'
- Window top level 8'
- Dedicated cable line for TV & Internet provision
- Two floors of Covered Car Parking.
- 3 high speed elevators in each Block (2 Passenger Lifts and 1 Service Stretcher Lift)
- Club house with High-end Amenities
- All Season Indoor heated swimming pool providing complete privacy for use.
- 6 Guest bedrooms at Club house.
- 60% + open space
- Temple along with Amphitheatre as per Vastu.
- Amenities at Podium level



## Amenities

|                               |                                                                                                                                                                                                                                                                                                                                                                                                                                                                                                          |
|-------------------------------|----------------------------------------------------------------------------------------------------------------------------------------------------------------------------------------------------------------------------------------------------------------------------------------------------------------------------------------------------------------------------------------------------------------------------------------------------------------------------------------------------------|
| Indoor Amenities              | <p>Games Room<br/>         Billiards<br/>         Indoor Badminton Court<br/>         Jacuzzi<br/>         Indoor Heated Swimming Pool<br/>         Gymnasium<br/>         Yoga and Meditation Room<br/>         Double height Banquet Hall<br/>         Children's Indoor Play Area<br/>         Business Centre<br/>         Guest Room for Society<br/>         Steam Room<br/>         Lounge (Gentleman's Club, Kitty Party area)<br/>         Music &amp; Dance Room<br/>         Home Theatre</p> |
| Outdoor Amenities             | <p>Multipurpose Court<br/>         Acupressure Walkway<br/>         Jogging Track<br/>         Kids' Play Area<br/>         Senior Citizens' Walkway around Garden<br/>         Meditation Deck<br/>         Amphitheatre</p>                                                                                                                                                                                                                                                                            |
| Safety and Security           | <p>IP-based CCTV surveillance at strategic locations<br/>         Security cabin at premises' entry<br/>         Boom barrier at premises' entry<br/>         100% DG backup in common areas<br/>         Intercom</p>                                                                                                                                                                                                                                                                                   |
| Energy Conservation           | <p>Energy-efficient lights in common areas<br/>         Electric vehicle charging points</p>                                                                                                                                                                                                                                                                                                                                                                                                             |
| Occupational Health & Comfort | <p>Use of native plants for landscape<br/>         Building orientation planned for ample natural light &amp; ventilation</p>                                                                                                                                                                                                                                                                                                                                                                            |
| Water Conservation            | <p>Recycled water for gardening &amp; flushing<br/>         Ground water recharge<br/>         Rain water harvesting<br/>         Water treatment plant</p>                                                                                                                                                                                                                                                                                                                                              |
| Solid Waste Management        | <p>Sewage treatment plant<br/>         Organic waste composter<br/>         Segregation at Source</p>                                                                                                                                                                                                                                                                                                                                                                                                    |
| Other Services                | <p>Minimum 3 elevators<br/>         (2 passengers + 1 Service Stretcher)<br/>         High-speed Elevators<br/>         VRF Air conditioners</p>                                                                                                                                                                                                                                                                                                                                                         |

## Specification

|                                    |                                                                                                                                                                                                                                                                                                                                                                                                                                                 |
|------------------------------------|-------------------------------------------------------------------------------------------------------------------------------------------------------------------------------------------------------------------------------------------------------------------------------------------------------------------------------------------------------------------------------------------------------------------------------------------------|
| <b>Structure</b>                   | <p>Foundation-RCC Substructure on piles<br/>         Super Structure-RCC framed with Earthquake Resisting Structure<br/>         Walls-AAC Blocks</p>                                                                                                                                                                                                                                                                                           |
| <b>Walls</b>                       | <p>Exterior-finished with Putty &amp; exterior type paint to withstand all weather conditions<br/>         Interior-finished with Plaster of Paris/ Putty</p>                                                                                                                                                                                                                                                                                   |
| <b>Kitchen</b>                     | <p>Granite counter top Claddings with Vitrified Tiles upto 2ft above counter<br/>         Stainless steel sink of reputed brand</p>                                                                                                                                                                                                                                                                                                             |
| <b>Windows</b>                     | <p>Aluminium Glass Windows. Top height at 8ft</p>                                                                                                                                                                                                                                                                                                                                                                                               |
| <b>Balcony Railing</b>             | <p>Glass Balcony Railing</p>                                                                                                                                                                                                                                                                                                                                                                                                                    |
| <b>Elevator</b>                    | <p>3 nos. of High Speed Elevators per Block<br/>         (2 Passenger Lifts + 1 Service Stretcher Lift) with CCTV Camera<br/>         Make- Kone / Otis / Schindler</p>                                                                                                                                                                                                                                                                         |
| <b>Fire Safety</b>                 | <p>Equipped with Alarm / Fighting Devices and others as per norms</p>                                                                                                                                                                                                                                                                                                                                                                           |
| <b>Plumbing</b>                    | <p>Concealed plumbing lines with UPVC / CPVC or equivalent pipe and related fittings</p>                                                                                                                                                                                                                                                                                                                                                        |
| <b>Bathrooms</b>                   | <p>CP &amp; Sanitary fittings will be of superior quality of make Jaquar or equivalent</p>                                                                                                                                                                                                                                                                                                                                                      |
| <b>Doors &amp; Chowkhats</b>       | <p>All the Chowkhats made of Wood Polymer Composite (WPC). All doors are Flush Doors</p>                                                                                                                                                                                                                                                                                                                                                        |
| <b>Doors Specifications</b>        | <p>i) Height = 8 ft (all doors) ii) Bedroom = 3 ft iii) Entry door = 4 ft iv) Toilet = 2 ft 6 inch</p>                                                                                                                                                                                                                                                                                                                                          |
| <b>Flooring</b>                    | <p>Bedrooms, Living room, Kitchen-2x2 ft vitrified tiles<br/>         Bathrooms-Anti skid tiles 1.5x1.5 ft, Wall-1.5x1.5 ft ceramic<br/>         Balcony &amp; Terrace-2x2 ft Vitrified Anti skid tiles<br/>         Lobby &amp; Staircases-Granite / Marble / Tiles per Architect's design<br/>         Parking-VDF / Tiles as per Architect's design</p>                                                                                      |
| <b>Electrical Facilities</b>       | <p>Concealed Electrical wiring with fire resistant wires<br/>         (Polycab / Finolex or equivalent)<br/>         Modular switches of Legrand or equivalent make<br/>         Provisions for adequate light and fan point<br/>         Provisions for Geyser points &amp; Exhaust point in all Bathrooms<br/>         Provisions for Chimney &amp; Exhaust in Kitchens<br/>         Provisions for Washing machine &amp; Iron in Utility</p> |
| <b>Air Conditioning</b>            | <p>Provision for VRF AC with dedicated outdoor space. Provision for copper pipe line and waste water line</p>                                                                                                                                                                                                                                                                                                                                   |
| <b>Backup Power</b>                | <p>100% DG backup for power backup in common areas.<br/>         100% DG backup for power backup in all apartments. (Extra Chargeable)</p>                                                                                                                                                                                                                                                                                                      |
| <b>Security &amp; Connectivity</b> | <p>A fully secure complex with Security Gate and Boom Barrier<br/>         Apartments to be facilitated with Intercom system connected with Reception, Security &amp; other Apartments.<br/>         Provision for Video Door Phone<br/>         Dedicated cable line for TV &amp; Internet<br/>         Provision CCTV monitoring to provide surveillance of Gate, all floor Lobbies</p>                                                       |
| <b>Extra Chargeable</b>            | <p>1st year Maintenance Charges/ Security Deposit/ Registration Charges of Flats/<br/>         applicable Taxes, Fees, GMC Holding Charges etc. (Wherever applicable will be charged extra)</p>                                                                                                                                                                                                                                                 |

The above specifications and amenities are tentative and may be changed or modified at the sole discretion of the Developer and / or for technical reasons. Specifications mentioned here may differ for A-Block.

## Architect's Note

Protech Tarun Nagar sits in the heart of the city of Guwahati changing the city's skyline forever. Stilt plus 10, 11, 13 and 18 edifice comprises of various luxurious sizes of apartments including mix of duplexes catering to the growing needs of the city. This upcoming project aims to be the highest residential of Guwahati and also endeavors to create a community within a community.

The modern façade instantly evokes an image of royalty, luxury and awesomeness creating an iconic identity of its own. This residential complex is designed to become a unique and proud addition to the city where all the flats are Vastu compliant and manifest luxury.



### ARCHITECTURAL FEATURES

The entire project has been designed as an intelligent response to the modern day living and the lifestyle that the residents want. Protech Tarun Nagar accomplishes this goal exceptionally by ushering in luxury and various facilities. All the buildings are connected at the podium level. The podium with magnificent landscape acts as the fulcrum point of the project. The modern amenities at the podium with individual terrace gardens encourage the residents to engage in community leisure activities and interaction along with private spaces of their own. It has been ensured that sufficient parking has been provided. Double height entrance lobbies are proposed to celebrate one's arrival.

The residential complex houses include a well-equipped clubhouse that features a banquet hall, badminton court, library, indoor games, gymnasium and with the novel gentlemen's club. All the apartments have been designed to be well ventilated with optimum daylight and spaciousness.

### CONSTRUCTION

The all new modern Mivan technology construction method is adopted for robust and timeless delivery of the project.

### SUSTAINABILITY

In order to make the project sustainable, all the norms of modern green building concepts have been proposed. Such as low VOC paints, Solar Panels and smart Coated Glass to reduce the electrical consumption. Also Rainwater Harvesting System and STP has been proposed to use the treated water for Flushing, Landscape etc.

Imagined to be first of its kind housing project, **Protech Tarun Nagar** shall be the city's most indispensable and recognized project.

## Consultants

### DEVELOPER

Protech Housing  
Address: Protech Centre, 6th floor, Ganeshguri, G.S. Road, Guwahati - 781006

### PRINCIPAL ARCHITECT

Acube Architects,  
Ali Abbasi, Mumbai

### RESIDENT ARCHITECT

Creations  
Anjay Gupta Ji, Guwahati

### VASTU CONSULTANT

Sri Pawan Keshan, Guwahati  
Sri Vikas Bhura, Guwahati  
Sri Shravan Sanganeria, Guwahati

### PRINCIPAL STRUCTURAL CONSULTANT

SPA Consultants  
Sanjeev Pareek Ji  
Kolkata

### MEP CONSULTANT

Saent India Engineering Consultants Private Limited, Kolkata

Legacy



TULIP



GALAXY



PARADISE



HERITAGE



GREEN



AKANSHA



CENTRE



VIEW

HARKANAN



PRIME



PARK



PELICAN



BIMALA



REGENCY



PEARL



TARA HIRA



PRITAM

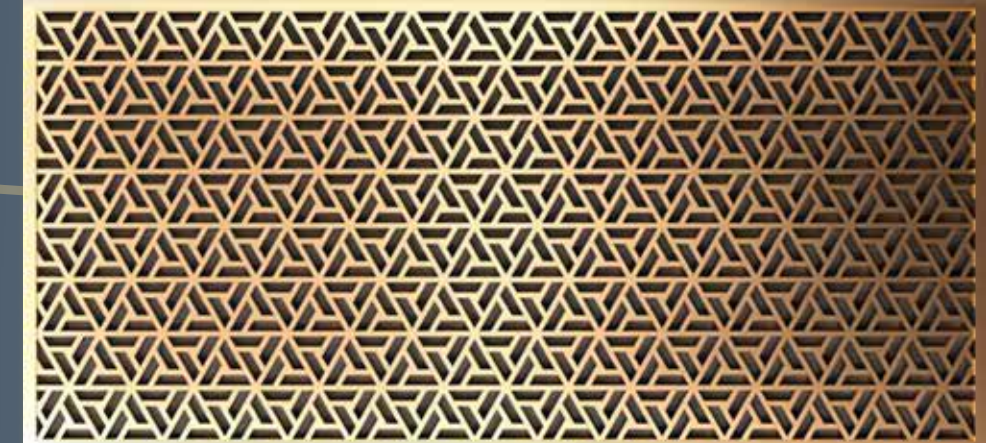
About the Developer

Protech Group is a pioneer in real estate promotion and development in India's Northeast with over 16 years of experience.

'Protech' derives its name from the two inspirational words - Progressive and Technology. These two words have guided the company's continuing commitment to uphold excellent standards of design, construction, quality, pricing and customer service. With over a decade of experience, Protech's name has left a legacy as one of the leading and best real estate builders in Assam with 16 landmark developments across the city.

We are one of the best real estate companies in Guwahati with a vision to have 100% satisfied customers. We want to change the real estate skyline of Assam and the Northeast region with our housing, commercial and warehouse related infrastructure projects.

Protech Group is the only builder from Northeast to receive the reputed CMO Asia Award 2018-19 in the category of Real Estate Awards.



In Association with





#### **Site Address**

Protech Tarun Nagar, Bye Lane No. 2,  
Tarun Nagar, Guwahati - 781006

#### **Developer**

Protech Housing, Protech Centre, 6th Floor, Ganeshguri,  
G.S. Road, Guwahati - 781006

Block A Registration number : RERAAKM 14 of 2021 dated.21st January 2021  
Block B Registration number : RERAAKM 33 of 2021 dated.24th February 2021  
Block C Registration number : RERAAKM 43 of 2021 dated.17th March 2021  
Block D Registration number : RERAAKM 42 of 2021 dated.16th March 2021  
Block E Registration number : RERAAKM 40 of 2021 dated.16th March 2021

#### **Disclaimer**

- The plan certification, image specifications, configurations and other details in this brochure are indicative.
- The Developer/ Owner reserves the right to alter and /or modify and/or change the same.
- The images and views are indicative of architect's impressions and are only for illustration purposes.
- The Developer has reserved the right to consume further FSI/FAR as may be available before the execution of the deed of conveyance.
- The terms and conditions contained in the brochure are the broad terms and conditions and do not form part of any concluded contract nor shall be deemed to construe any offer or representations made by the Developer.
- The terms and conditions of sale and transfer of a particular flat/unit/apartment will also be subject to final agreement to be executed between the intending purchaser and the Developer.
- The specifications mentioned here do not hold good for Block "A".