



THE SAGA CONTINUES...



INDULGENCE. OPULENCE. HAUTE LIVING.



SHOT AT SITE

Emirus - 2.0

the top slot

3.5 & 4.5 RHKDT PREMIUM VILLAMENTS

BANER

A DIVINE TOUCH OF ARISTOCRACY

A harmonious blend of the finest in Design, Architecture and Style. An invigorating Aura of Luxe. The artistry of the lines and the curves. The vast expanse of spaces filled with good vibes. The divine touch of aristocracy and exclusivity. The erudite selection of finishes. The flamboyant features. That natural elegance which doesn't have to try too hard.

Experience it all at EMIRUS 2.0. In the finest of details. In the biggest startling differentiators. At its very best!

ARTISTIC IMPRESSION





SHOT AT SITE

Emirus

the top slot

3.5 & 4.5 RHKDT PREMIUM VILLAMENTS

**A PLACE TO REFLECT, REJUVENATE
AND CELEBRATE**

Terrace as big as a veranda will make you feel royal. Spend an enchanting morning with a hot cuppa of nirvana. Or simply lift your spirit under the starry sky. Make game plans to rule your own empire.



SHOT AT SITE

SPECIFICATIONS

STRUCTURE

- ✦ RCC framed Structure

PLASTERING AND PAINTING

- ✦ Internal walls with scratch coat plaster with gypsum plastering
- ✦ Internal painting: Luster paint
- ✦ External painting: Weather-proof textured paint with apex paint finish

CEILING

- ✦ False ceiling in entire apartment

ELECTRICAL

- ✦ Provision for air conditioning system
- ✦ Concealed electrical copper wiring (fire resistant cable)
- ✦ Earth leakage circuit breaker for each apartment
- ✦ Home automation & intelligent switches
- ✦ Adequate provision for light points and power sockets in the kitchen for various appliances
- ✦ Fiber optic connectivity

THE LIVING ROOM

- ✦ Large size marble finish vitrified flooring
- ✦ Mood lighting
- ✦ Motion sensor in private lobby area
- ✦ UPVC sliding windows with mosquito mesh
- ✦ Designer veneer finished main door
- ✦ 10.2 ft clear height (floor to slab)
- ✦ Ample cross ventilation, abundant natural light in entire flat

BEDROOMS

- ✦ Marble finish vitrified flooring for all bedrooms
- ✦ Mood lighting
- ✦ Separate walk-in wardrobes space in masters den
- ✦ Marble window ledge in 4RHKDT
- ✦ Marble window sills
- ✦ UPVC sliding windows with mosquito mesh
- ✦ Concealed foot lamps
- ✦ Veneer finish doors
- ✦ Wooden door frames



SHOT AT SITE

KITCHEN & DINING

- ✦ Marble finish vitrified flooring
- ✦ Fully modular kitchen with S S sink
- ✦ Electric chimney and hob
- ✦ Water purifier
- ✦ Mood lighting in dining area
- ✦ Piped gas with gas leak detector
- ✦ Additional service counter and double S S sink in 4.5 RHKDT
- ✦ Designer dado tiles
- ✦ Utility area with provision for dishwasher and washing machine

RESTROOMS

- ✦ Designer premium sanitary and CP fittings
- ✦ Motion sensor
- ✦ Glass enclosure for wet area
- ✦ Decorative false ceiling
- ✦ Designer dado tiles upto false ceiling
- ✦ Rain shower in master restroom
- ✦ Exhaust fan
- ✦ Anti skid flooring
- ✦ Concealed flush tanks
- ✦ Wash basin with designer counters
- ✦ CPVC & UPVC plumbing
- ✦ Jacuzzi tub in master restroom

- ✦ Thermostatic diverters in all restrooms

THE DECK

- ✦ Wooden finish vitrified flooring
- ✦ Wooden finish ceiling at 20ft height
- ✦ Designer deck with S S glass railing
- ✦ Concealed foot lamps
- ✦ Infinity view

SAFETY & SECURITY SYSTEM

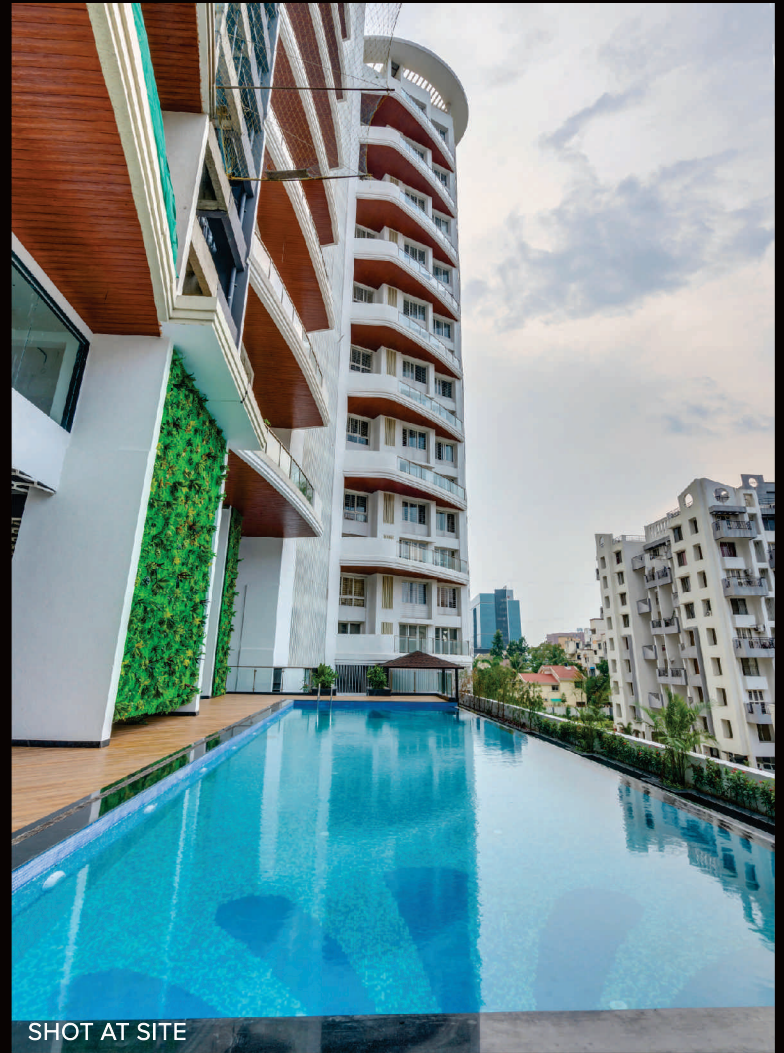
- ✦ CCTV camera in private lobby area
- ✦ Safety grills for all windows
- ✦ Main door with digital lock
- ✦ Video door phone
- ✦ Gas leakage detector
- ✦ Panic switch
- ✦ Intercom facility
- ✦ Biometric and card access for private elevator
- ✦ Access controlled common areas

FIRE SAFETY

- ✦ Sprinklers system in each apartment, including external yard hydrants
- ✦ Addressable smoke detectors in all rooms
- ✦ Fire alarm



SHOT AT SITE



SHOT AT SITE

DESIRED BY MANY, DESERVED BY A FEW LIKE YOU

- ✿ Unique facade of building
- ✿ High speed designer private elevators
- ✿ Grand entrance lobby with concierge facility
- ✿ Business centre
- ✿ Library and reading area.
- ✿ Cafeteria
- ✿ Indoor game zone
- ✿ Clock tower with Kids pickup n drop area
- ✿ Spa and steam room
- ✿ Barbeque area
- ✿ Infinity pool with underwater music system
- ✿ Kid's pool
- ✿ Gymnasium with yoga room
- ✿ Open gym
- ✿ Kid's play area
- ✿ Party lawn
- ✿ Open amphitheatre
- ✿ Open meditation area
- ✿ Labyrinth
- ✿ Crèche
- ✿ Jogging/walking pathway
- ✿ Water bodies with fountains
- ✿ Internationally designed landscaped garden
- ✿ Rain water harvesting
- ✿ Water softening plant
- ✿ Fire fighting systems
- ✿ Double heighted parking zone
- ✿ Proper compound with security cabin
- ✿ Visitors face scan for security check
- ✿ CCTV cameras
- ✿ Generator backup for common areas
- ✿ Guest room
- ✿ Driver's room & toilet
- ✿ S T P
- ✿ Car wash area



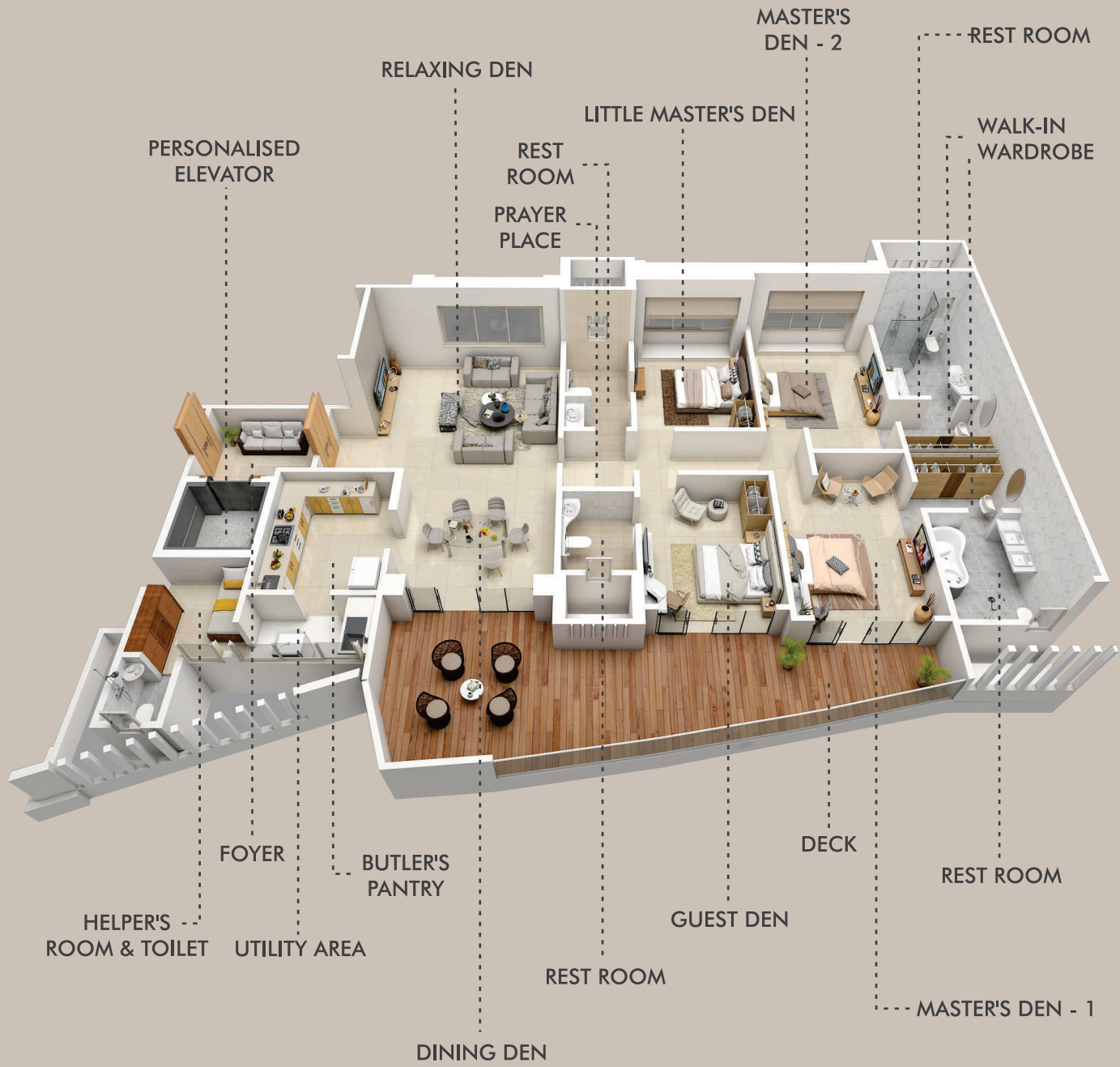
ARTISTIC IMPRESSION

THE ULTIMATE BENCHMARK OF EXCLUSIVITY

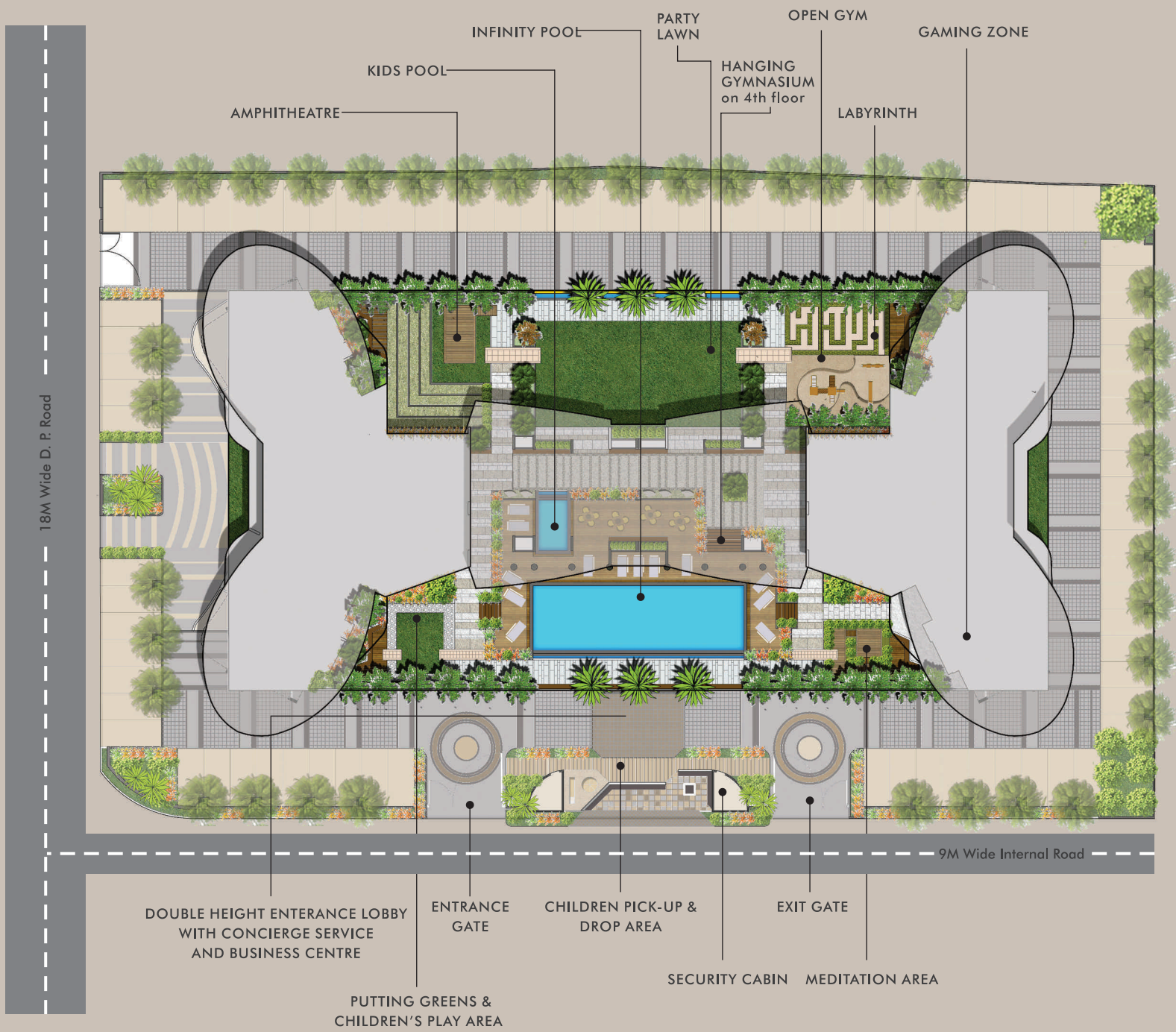
Few things in life signify the status quotient you have nurtured. A home that truly reflects your persona is the benchmark of exclusive living you have set for yourself. Don't compromise with your attitude. Opt for the best in the town...



3.5
 R H K D T



4.5
 R H K D T



Emirus
the top slot



DISTANCES

D-Mart	100 mtr.
Mumbai-Bangalore highway	300 mtr.
Balewadi Highstreet	500 mtr.
Hinjewadi	3.0 Km
Aundh	5.0 Km
Pune University	7.0 Km
Airport	19.0 Km
Railway Station	12.0 Km
Proposed Metro Station	2.0 Km
Jupiter Hospital	1.9 Km

RISE ABOVE

EMIRUS is not just a home or a living style. It's an inspiration to transcend the obvious and go further, a supreme state of rising high above the ordinary! Even in a locality that is upmarket and enthralling with dazzling excitement, you still remain distinctly aloof with your own flamboyant cult. For the connoisseurs of high life, presenting EMIRUS 2.0...

PROJECT ASSOCIATES

PROJECT DESIGN / SUSTAINABILITY CONSULTANT

Sanjeev Mehta (Ethique Architect, Mumbai)
Internationally Acclaimed Design Firm

MEP CONSULTANT

AES (Architectural Energy Solution)

LANDSCAPE ARCHITECT

Stantec & Burthill
(USA)

RCC CONSULTANT

G. A Bhilare

BRAND CONSULTANT

RJ Design

LIASONING ARCHITECT

Jay Aream



SHOT AT SITE



SHOT AT SITE

Get ready for a complete metamorphosis of the living ambience. At EMIRUS 2.0, deserving elite families will uncover the scintillating revelations of absolute privacy. Inspired by the cherished virtue called ecstasy, these palatial villa condominiums are personifications of sheer contentment. Welcome to a Utopian experience...!



SHOT AT SITE

A PROJECT BY



EXCEEDING EXPECTATIONS

G. M. KENJALE GROUP is a name synonymous with Legacy, Quality, Trust and Commitment.

All the exquisite residential and commercial projects the company has developed, reflect the same.

KUNDAN SPACES is known for refined aesthetic vision and innovative thinking.

The company has a new-age mindset that appeals the most to the sensible people with contemporary lifestyle.

With a common objective of building out-of-the-box creation, both these coveted brands have come together.

And the upshot is in front of you. As enthralling and awe-inspiring EMIRUS 2.0!

THE BEST ALWAYS GETS THE PRAISE IT DESERVES

Award For
Iconic Project Of The Year



Best Residential Project In
Luxury Segment Of Pune

TIMES REALTY
ICONS PUNE
2018

AWARD IN BEST RESIDENTIAL /
COMMERCIAL SEGMENT

PCERF
CONSTRUCTION SAFETY
AWARD 2014

Emirus - 2.0

the top slot

www.emirus.net

SITE OFFICE Sr. no. 107, Baner Road, Near D' Mart, Baner, Pune- 411 045, MH. India.

Email : sales@emirus.net

+91 82370 00041, 42



MAHA RERA NO. P52100005651
<http://maharera.mahaonline.gov.in>

1) This Brochure is purely conceptual and tentative and is designed in good faith to give a fair and general view of the project and is not a legal offering, nor will it be deemed to be part of any agreement. Photographs are not comprehensive or current. Nothing contained in this Brochure will take precedence in the final agreement. Number of buildings, areas, flats/ units, amenities, specifications, floors, roads, open space, etc. may be revised. Promoters reserve the right to amend the layout, plans, elevations, designs, specifications, amenities, areas, etc. The printed material does not constitute a contract/ offer of any type between the developer/ owner and the recipient. Any purchase of this development shall be governed by the terms and conditions of the agreement of sale/lease entered between parties and no details mentioned in this printed material shall in anyway govern such transaction. 2) The viewers affirm that he/ she shall not take his/ her decision of purchase/booking by viewing this Brochure. The developer/owner is not responsible for the action of the viewer's booking/ purchasing a unit relying on this Mailer.
3) The Brochure is an artist's imaginative set of images.