



PARAMOUNT
Reaching New Heights

INHABIT THE LAP **OF LUXURY**



PARAMOUNT

Reaching New Heights

An aerial architectural rendering of a modern high-rise residential complex. The main building is a tall, multi-story structure with a white facade and brown accents, featuring a prominent central tower and several wings. The building is surrounded by lush greenery, including palm trees and other tropical plants. In the foreground, there is a basketball court with a blue and orange court, a colorful playground, and a paved area with some seating. A multi-lane road with several cars is visible to the right of the building. The overall scene is set in a well-landscaped urban environment.

LAUNCHING LUXURY RESIDENCIES:

“PARAMOUNT” is a project where luxury meets affordability, city meets nature and future meets present. The project features two high-rise towers with innovatively planned 1 & 2 BHK homes along with grand showrooms and retail spaces. The key feature of the project is its location, which is the most sought-after upcoming residential hub, the Shilphata Circle, under the Thane Municipal Corporation.



PARAMOUNT

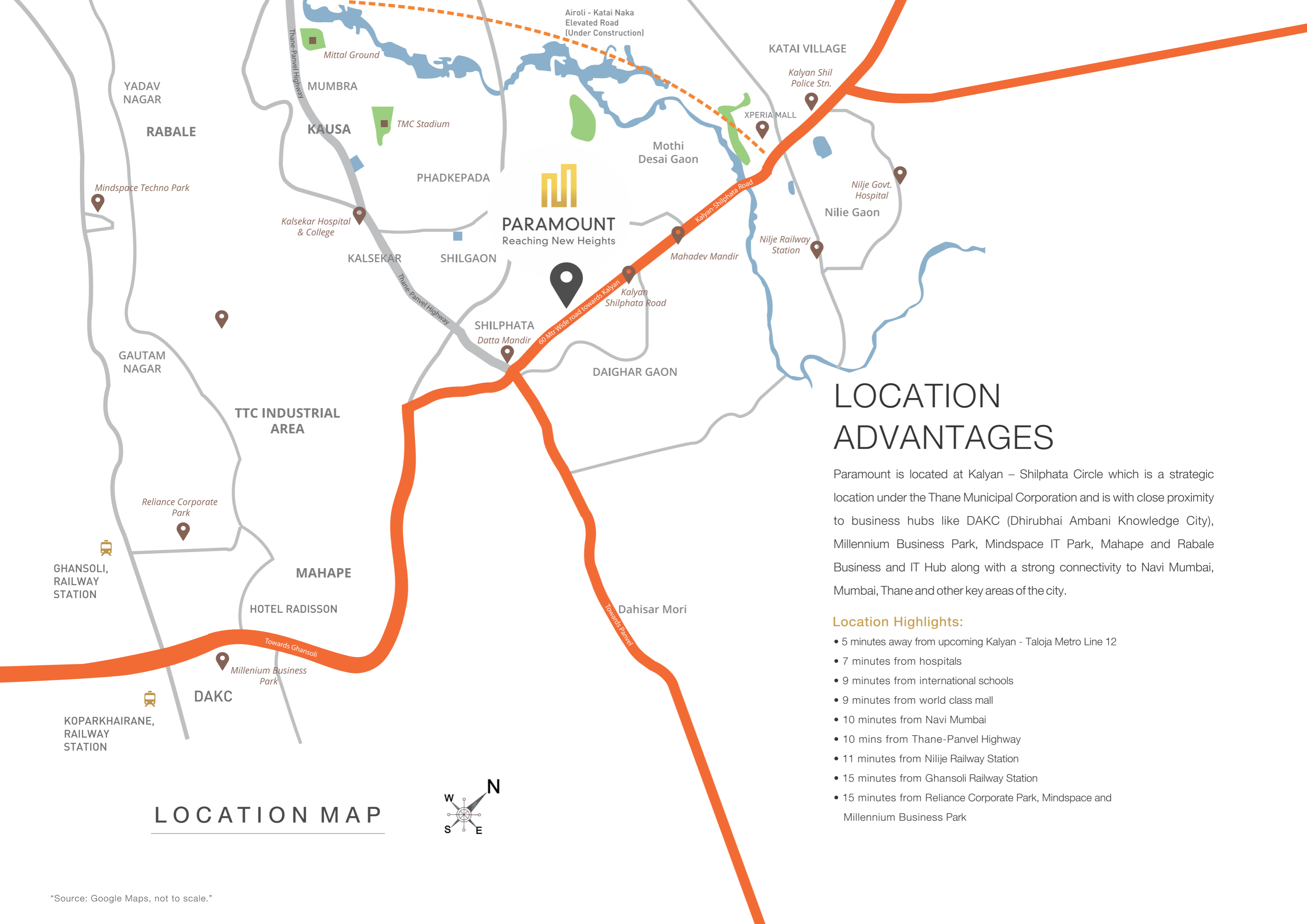
Reaching New Heights

PROMISING CONNECTIONS

Paramount brings to you the finest living experience in smartly designed 1 & 2 BHK apartments developed with essential amenities and strategically placed at the core of the town, ensuring simplified living. At Paramount, walk in to a property that emanates class amenities like fully air conditioned gymnasium, indoor games arena, landscaped and sculptured garden, children's play area with separate toddler's zone, jogging and reflexology track, gazebo with a seating area and many others.

PROJECT HIGHLIGHTS:

- Elegant Highrise Tower with Earthquakes Resistant Designed
- Spacious and Well Planned 1 & 2 BHK Apartments
- Multi-level Car Parking Zone with Fast Charge Points for EV
- Elevated Recreational Space with Lifestyle Amenities
- High-Speed Elevators and 24x7 Security Surveillance System
- Project Facing 60 Meter Wide Road
- Proposed Metro Line 12 at the doorstep (Kalyan - Talaja)



PARAMOUNT
Reaching New Heights

LOCATION ADVANTAGES

Paramount is located at Kalyan – Shilphata Circle which is a strategic location under the Thane Municipal Corporation and is with close proximity to business hubs like DAKC (Dhirubhai Ambani Knowledge City), Millennium Business Park, Mindspace IT Park, Mahape and Rabale Business and IT Hub along with a strong connectivity to Navi Mumbai, Mumbai, Thane and other key areas of the city.

Location Highlights:

- 5 minutes away from upcoming Kalyan - Taloja Metro Line 12
- 7 minutes from hospitals
- 9 minutes from international schools
- 9 minutes from world class mall
- 10 minutes from Navi Mumbai
- 10 mins from Thane-Panvel Highway
- 11 minutes from Nilije Railway Station
- 15 minutes from Ghansoli Railway Station
- 15 minutes from Reliance Corporate Park, Mindspace and Millennium Business Park

LOCATION MAP



"Source: Google Maps, not to scale."

REKINDLE FAMILY BONDS, SURROUNDED BY NATURE

REVEL IN THE OUTDOORS
WITH THE PEOPLE YOU CHERISH



PODIUM LEVEL FEATURES:

- Party Lawn with Stage
- Sculpture Garden & Gazebo
- Senior Citizen's Corner with Seating Area
- Children's Play Area with Separate Toddlers Zone
- Yoga and Meditation Zone
- Air Conditioned Gymnasium with modern equipments
- Multipurpose Court
- Temple
- Jogging Track
- Acupressure Pathway
- Multipurpose Hall with Banquet

LIST OF AMENITIES



FLOORING

- Vitrified flooring in the entire apartment.
- Wooden design tile in flower bed.



KITCHEN

- Granite platform & service counter.
- Stainless steel sink of reputed make.
- 3 ft. height designer tiles above kitchen platform.



BATHROOM

- Contemporary bathroom designs with designer tiles upto 8ft.
- Branded sanitary and CP fittings.
- Anti-skid flooring in bathrooms.



DOORS & WINDOWS

- Designer laminated doors with decorative hardware and lock fittings.
- Powder Coated / Anodized Aluminum Windows.



PAINTS & ELECTRICAL

- Gyproc plaster walls in all rooms with emulsion paint inside flat.
- Concealed copper wiring and Modular switches of reputed make.
- Provisions of points for AC, Washing Machine, Geyser, Water filters, Exhaust fan, Internet, etc.



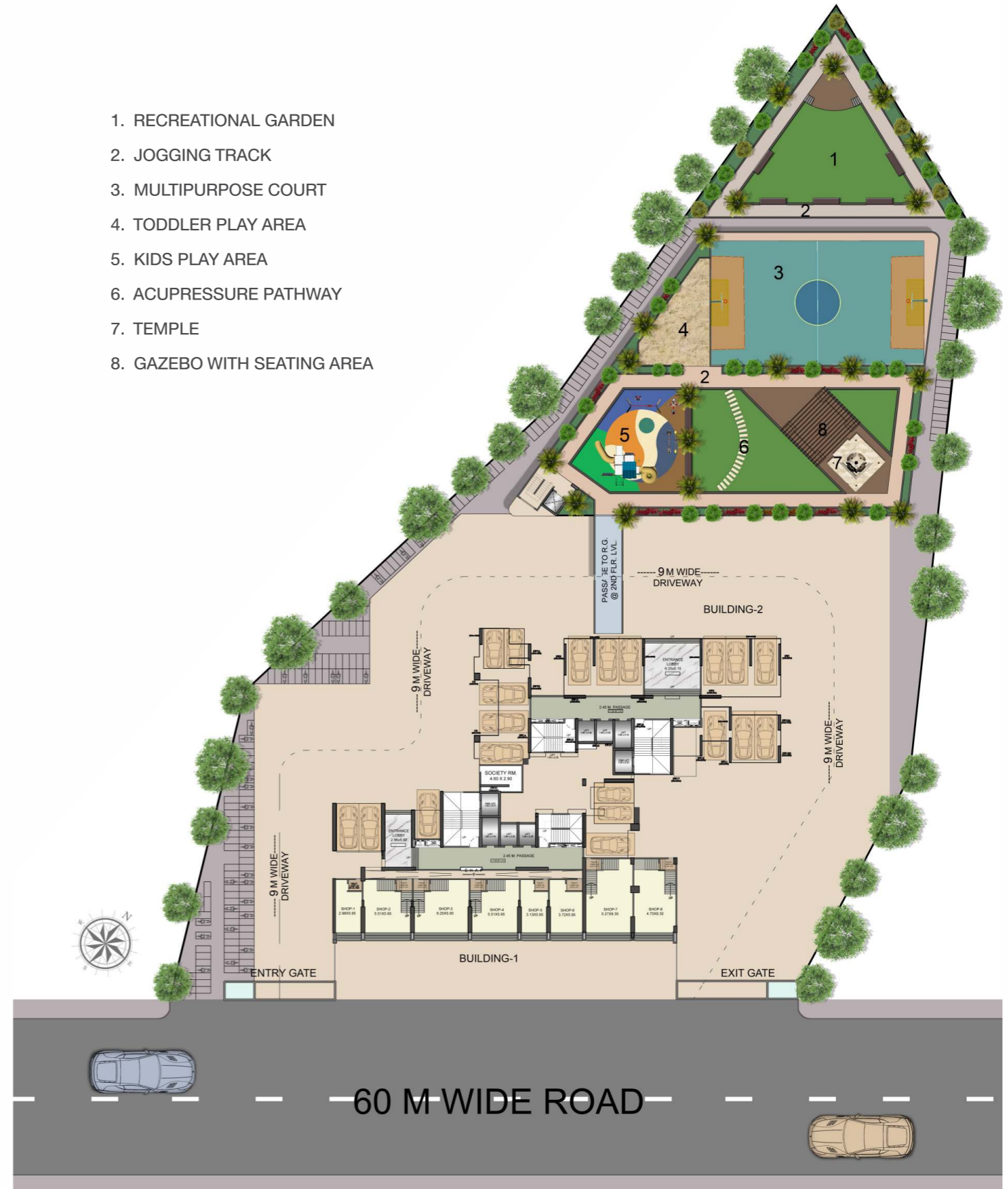
SECURITY & COMMON SERVICES

- All apartment with intercom facility.
- Generator Power back up for Elevators and Common Areas.
- Fire fighting systems with latest alarm system and sprinklers for Common area.
- 24x7 CCTV Surveillance System.

FLOOR PLANS

GROUND & PODIUM LEVEL PLAN

1. RECREATIONAL GARDEN
2. JOGGING TRACK
3. MULTIPURPOSE COURT
4. TODDLER PLAY AREA
5. KIDS PLAY AREA
6. ACUPRESSURE PATHWAY
7. TEMPLE
8. GAZEBO WITH SEATING AREA



TYPICAL FLOOR PLAN



BUILDING NO. 1

(2nd to 6th, 8th to 10th, 12th to 15th, 17th to 20th, 22nd to 25th, 27th to 30th & 32nd to 35th* Floor)

*Disclaimer: All dimensions on floor plan are not to scale. The interiors, furniture, fittings, fixture, etc. shown in the image / drawing are only artist's conception and not part of actual amenities provided. All internal dimensions are from unfurnished wall surface. Minor verification / tolerance of +/- 3% in RERA carpet area mentioned may occur on account of design and / or construction exigencies. *Approval for 32nd to 35th floor is under process and the units on these floor are not being offered for sale till approval.

REFUGE FLOOR PLAN



BUILDING NO. 1

(7th, 11th, 16th, 21st, 26th & 31st Floor)

*Disclaimer: All dimensions on floor plan are not to scale. The interiors, furniture, fittings, fixture, etc. shown in the image / drawing are only artist's conception and not part of actual amenities provided. All internal dimensions are from unfurnished wall surface. Minor verification / tolerance of +/- 3% in RERA carpet area mentioned may occur on account of design and / or construction exigencies.

TYPICAL FLOOR PLAN



BUILDING NO. 2

(3rd to 6th, 8th to 10th, 12th to 15th, 17th to 20th, 22nd to 25th, 27th to 30th & 32nd to 35th* Floor)

*Disclaimer: All dimensions on floor plan are not to scale. The interiors, furniture, fittings, fixture, etc. shown in the image / drawing are only artist's conception and not part of actual amenities provided. All internal dimensions are from unfurnished wall surface. Minor verification / tolerance of +/- 3% in RERA carpet area mentioned may occur on account of design and / or construction exigencies. *Approval for 32nd to 35th floor is under process and the units on these floor are not being offered for sale till approval.

REFUGE FLOOR PLAN



BUILDING NO. 2

(7th, 11th, 16th, 21st, 26th & 31st Floor)

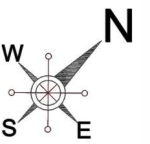
*Disclaimer: All dimensions on floor plan are not to scale. The interiors, furniture, fittings, fixture, etc. shown in the image / drawing are only artist's conception and not part of actual amenities provided. All internal dimensions are from unfurnished wall surface. Minor verification / tolerance of +/- 3% in RERA carpet area mentioned may occur on account of design and / or construction exigencies.

FIRST FLOOR PLAN



BUILDING NO. 2

SECOND FLOOR PLAN



BUILDING NO. 2

*Disclaimer: All dimensions on floor plan are not to scale. The interiors, furniture, fittings, fixture, etc. shown in the image / drawing are only artist's conception and not part of actual amenities provided. All internal dimensions are from unfurnished wall surface. Minor verification / tolerance of +/- 3% in RERA carpet area mentioned may occur on account of design and / or construction exigencies.

*Disclaimer: All dimensions on floor plan are not to scale. The interiors, furniture, fittings, fixture, etc. shown in the image / drawing are only artist's conception and not part of actual amenities provided. All internal dimensions are from unfurnished wall surface. Minor verification / tolerance of +/- 3% in RERA carpet area mentioned may occur on account of design and / or construction exigencies.

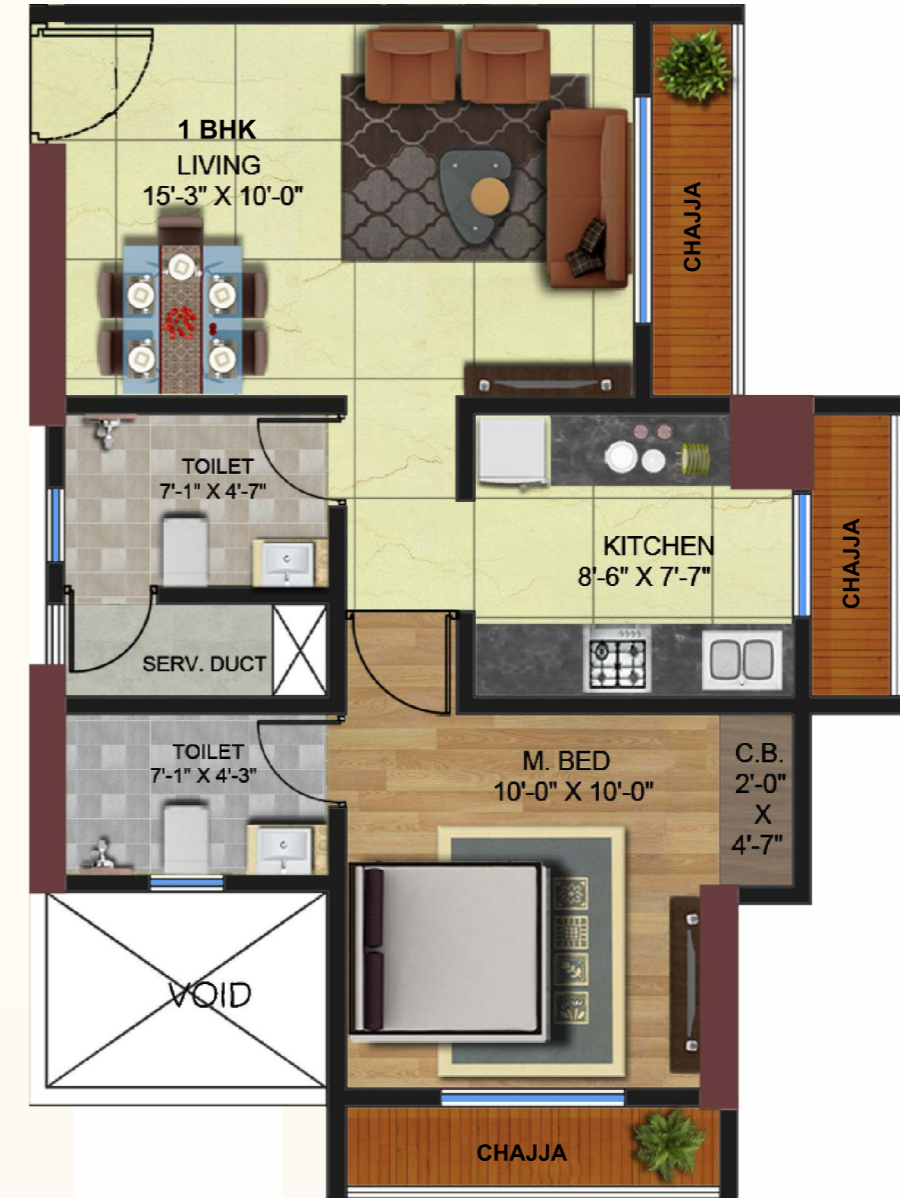
1 BHK UNIT PLAN - TYPE A



1 BHK UNIT PLAN - UNIT NO. 1	
CARPET AREA	- 35.49 sq.mtr.
ENCLOSED BALCONY	- 3.96 sq.mtr.
CUPBOARD	- 0.84 sq.mtr.

*Disclaimer: All dimensions on floor plan are not to scale. The interiors, furniture, fittings, fixture, etc. shown in the image / drawing are only artist's conception and not part of actual amenities provided. All internal dimensions are from unfurnished wall surface. Minor verification / tolerance of +/- 3% in RERA carpet area mentioned may occur on account of design and / or construction exigencies. Carpet Area is as defined under the Real Estate Act 2016.

1 BHK UNIT PLAN - TYPE B



1 BHK UNIT PLAN - UNIT NO. 2	
CARPET AREA	- 35.12 sq.mtr.
ENCLOSED BALCONY	- 3.96 sq.mtr.
CUPBOARD	- 0.84 sq.mtr.

*Disclaimer: All dimensions on floor plan are not to scale. The interiors, furniture, fittings, fixture, etc. shown in the image / drawing are only artist's conception and not part of actual amenities provided. All internal dimensions are from unfurnished wall surface. Minor verification / tolerance of +/- 3% in RERA carpet area mentioned may occur on account of design and / or construction exigencies. Carpet Area is as defined under the Real Estate Act 2016.

2 BHK UNIT PLAN - PRIMA



2 BHK UNIT PLAN - UNIT NO. 3 & 4		
CARPET AREA	-	52.43 sq.mtr.
ENCLOSED BALCONY	-	4.64 sq.mtr.
CUPBOARD	-	2.09 sq.mtr.

*Disclaimer: All dimensions on floor plan are not to scale. The interiors, furniture, fittings, fixture, etc. shown in the image / drawing are only artist's conception and not part of actual amenities provided. All internal dimensions are from unfurnished wall surface. Minor verification / tolerance of +/- 3% in RERA carpet area mentioned may occur on account of design and / or construction exigencies. Carpet Area is as defined under the Real Estate Act 2016.

2 BHK UNIT PLAN - OPTIMA



2 BHK UNIT PLAN - UNIT NO. 5		
CARPET AREA	-	48.55 sq.mtr.
ENCLOSED BALCONY	-	4.64 sq.mtr.
CUPBOARD	-	1.92 sq.mtr.

*Disclaimer: All dimensions on floor plan are not to scale. The interiors, furniture, fittings, fixture, etc. shown in the image / drawing are only artist's conception and not part of actual amenities provided. All internal dimensions are from unfurnished wall surface. Minor verification / tolerance of +/- 3% in RERA carpet area mentioned may occur on account of design and / or construction exigencies. Carpet Area is as defined under the Real Estate Act 2016.



BUILDING A DIFFERENCE IS WHAT KEEPS US GOING STRONG.

Over the years, we have focused our energy on being different, thinking different and building different. Since inception, this one mantra has led us race ahead and become a name today everybody reckons with.

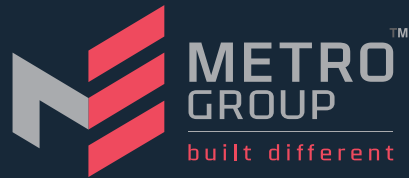
As a group our vision extends till the horizon, to redefine the ordinary. Our mission, to create landmarks that truly reflect the changing trends and customer desires.

Looking ahead, our dream is to build a skyline that is organically different, and no less than an epitome of perfection. Addresses that are "BUILT DIFFERENT".



- | | | | | | | | | | | | |
|--------------------------------|----------------------------|-------------------------------|-------------------------------------|------------------------------------|-----------------------------|--------------------------------|---------------------------------|---------------------------|-----------------------------|-----------------------------|-----------------------------------|
| TULSI GAGAN
Kharghar | CHAURANG
Sanpada | TULSI PRERNA
Panvel | CHAURANG HEIGHTS
Kharghar | CHAURANG SIDDHI
Kharghar | TULSI SAGAR
Nerul | TULSI MARVEL
Chembur | TULSI MEADOWS
Chembur | THE PALMS
Nerul | FAIRMOUNT
Sanpada | NAKSHATRA
Chembur | SWISS BOULEVARD
Chembur |
|--------------------------------|----------------------------|-------------------------------|-------------------------------------|------------------------------------|-----------------------------|--------------------------------|---------------------------------|---------------------------|-----------------------------|-----------------------------|-----------------------------------|

— A PROJECT BY —



Site Address: Survey No. 19, Kalyan-Shilphata Road, Shilgaon, Thane, Maharashtra 421 204.

CORPORATE OFFICE: Metro Group, The Ambience Court,
Unit no. 301 & 302, 3rd Floor, Plot No. 2, Sector 19D, Vashi, Navi Mumbai – 400703.

🌐 www.metrogroupindia.com 🌐 www.metro-paramount.com

📘 metrogroupin

🐦 @MetroGroupIndia

📷 metrogroupindia

MAHA RERA REG. NO.: P51700021343

Available at www.maharera.mahaonline.gov.in

Disclaimer: Project Developed by M/S Metro Dream Homes an SPV of promoters of Metro Group. All plans, specifications, designs, elevations, features, amenities, facilities and services mentioned are indicative of the kind of development proposed and its finality is subject to the approval of respective authorities. Pictures, visuals, perspective views of building, model, furniture and maps are artist's conceptions and not actuals. Recipients are advised to use their discretion in relying on the information/amenities described/shown herein. Any party desirous/interested in the project to enter into agreement for sale and the transaction shall be governed by the terms and conditions of the agreement for sale.