



A J M E R A

GREENFINITY

A LITTLE PIECE OF HEAVEN

i-Land, Wadala (E)

Scan QR Code
For Virtual Tour

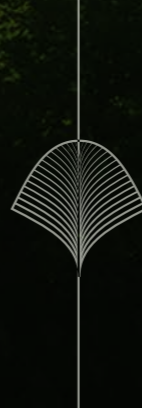


Available at website <http://maharera.mahaonline.gov.in>

MahaRERA Reg. No. P51800000789

Site Address : AJMERA i-LAND, Next to I-MAX Bhakti Park, WADALA (E) | T: +91-8970 44 55 00 | W: www.ajmera.com

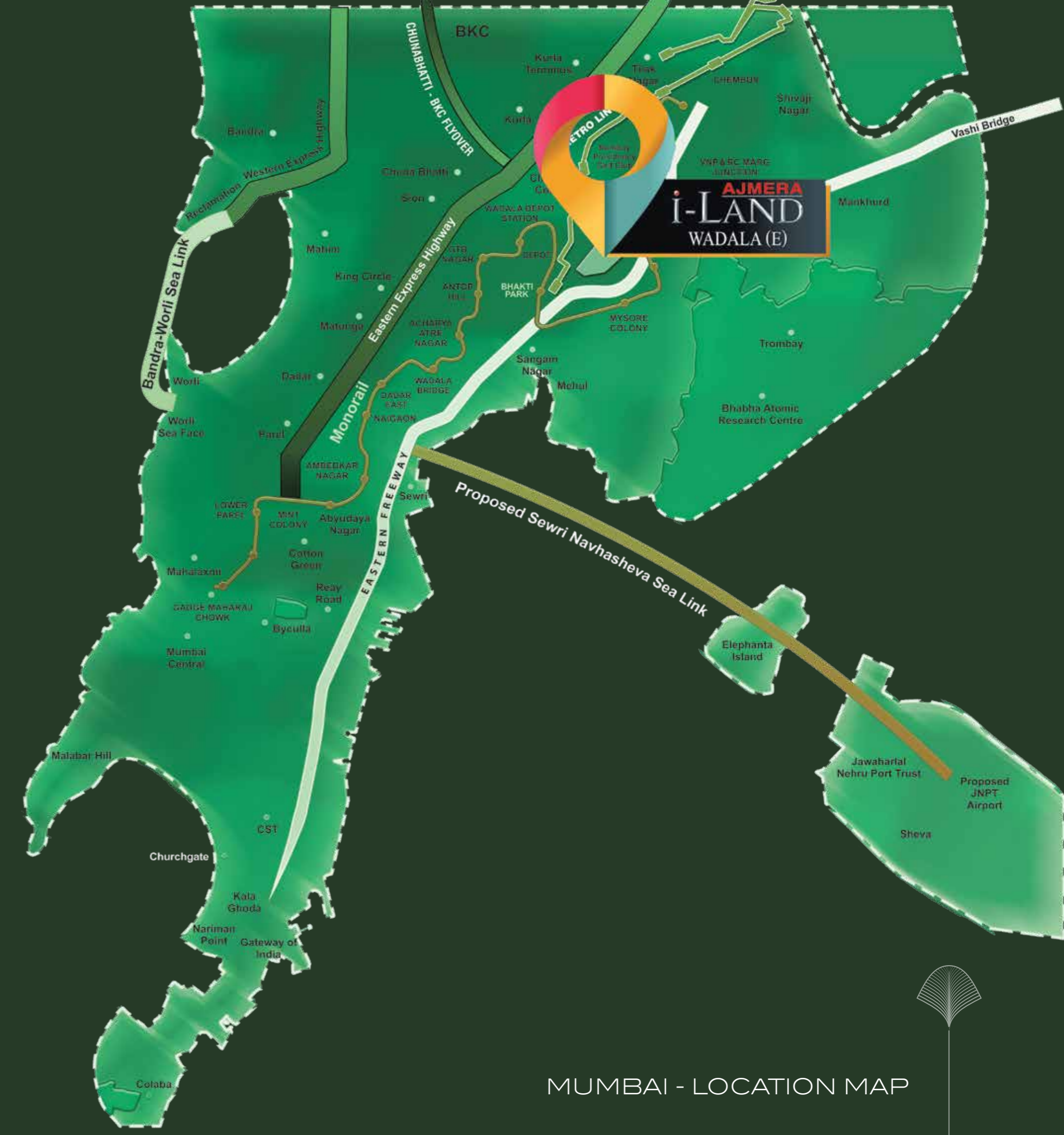
Disclaimer: All specifications, designs, facilities, dimensions etc. are subject to approval of the respective authorities. The developer reserve the right to change the specification or features without any notice or any obligation.



COME HOME TO YOUR
LITTLE PIECE OF
HEAVEN ON EARTH,
EVERYDAY.

YOUR LITTLE PIECE OF HEAVEN AT WADALA-E, THE HEART OF THE CITY.

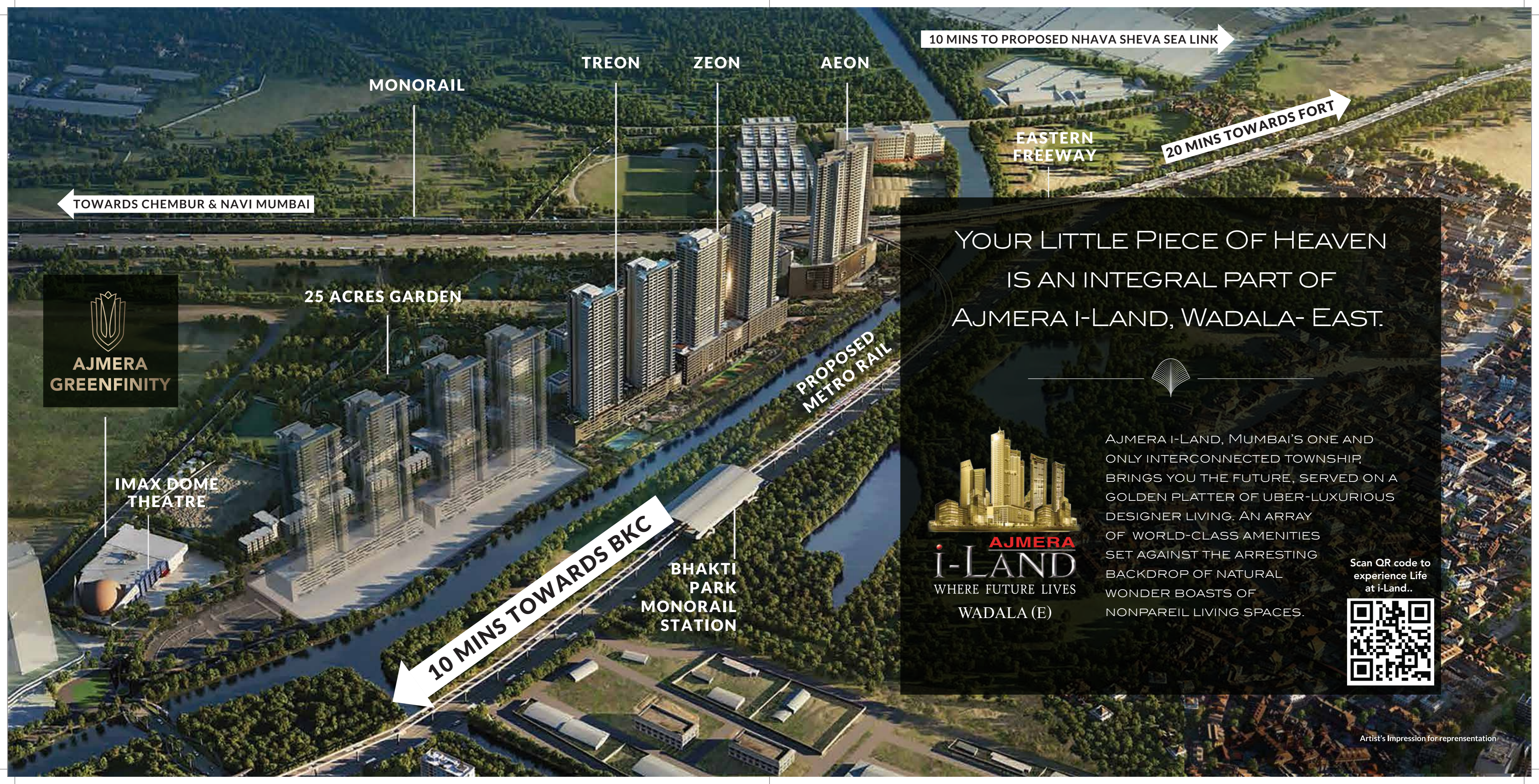
The first ever planned suburb, today, the name Wadala has transformed into a hub for education, healthcare, lifestyle and entertainment. It also boasts of unparalleled connectivity to the rest of Mumbai.



-  MTHL - Mumbai Trans Harbour Link
-  New Cruise Terminal
-  Navi Mumbai Airport
-  New Water Transport Hub
-  Marina Walk with Restaurants
-  New Ropeway to Elephanta
-  Marine Drive 2.0
-  Public Parks and Walkways
-  Central Garden Five Times The Size Of Oval Maidan
-  The Sewri Worli Connector Bridge

MUMBAI - LOCATION MAP





10 MINS TO PROPOSED NHAVA SHEVA SEA LINK

20 MINS TOWARDS FORT

TOWARDS CHEMBUR & NAVI MUMBAI

MONORAIL

TREON

ZEON

AEON

EASTERN
FREEWAY

25 ACRES GARDEN

PROPOSED
METRO RAIL



IMAX DOME
THEATRE

BHAKTI
PARK
MONORAIL
STATION

10 MINS TOWARDS BKC

YOUR LITTLE PIECE OF HEAVEN
IS AN INTEGRAL PART OF
AJMERA I-LAND, WADALA- EAST.



AJMERA I-LAND, MUMBAI'S ONE AND ONLY INTERCONNECTED TOWNSHIP, BRINGS YOU THE FUTURE, SERVED ON A GOLDEN PLATTER OF UBER-LUXURIOUS DESIGNER LIVING. AN ARRAY OF WORLD-CLASS AMENITIES SET AGAINST THE ARRESTING BACKDROP OF NATURAL WONDER BOASTS OF NONPAREIL LIVING SPACES.

Scan QR code to experience Life at i-Land..



Artist's Impression for representation

YOUR LITTLE PIECE OF HEAVEN IS CONNECTED TO THE ENTIRE MAXIMUM CITY.

Mornings and Evenings are lit up with the hustle and bustle of the city. With the Monorail and the Eastern Freeway being just a stone's throw away, your heavenly abode at Wadala- East leaves nothing to be desired.

- 10 Mins. to Proposed Nhava Sheva Sea Link
 - 10 Mins. to BKC via BKC - Chunnabhati Connector
 - 20 Mins. to Fort via Eastern Express Way
- Connecting Chembur & Navi Mumbai via Eastern Express Highway
 - Nearby Bhakti Park Monorail Station
 - Close to Proposed Metro Rail



EASTERN EXPRESS WAY



CHEMBUR & NAVI MUMBAI EXPRESS WAY



BKC - CHUNNABHATI CONNECTOR



NHAVA SHEVA SEA LINK



MONORAIL STATION



PROPOSED METRO RAIL



Often, we experience these precious little moments only when
we break away from the city in a far away scenic spot.
But what if we told you, there was such a place right in the heart
of the city waiting to shower you with these little joys?



A LITTLE PIECE OF HEAVEN
YOU CAN NOW CALL HOME.

Reference Image





YOUR LITTLE PIECE OF HEAVEN
MAKES YOU SOAK IN THE BEAUTY
OF OPEN ABUNDANT GREENERY.





PLAY WITH THE SHADE WHILE
SUNLIGHT MAKES PATTERNS
ON THE WALL AT YOUR
LITTLE PIECE OF HEAVEN.



WELCOME TO



AJMERA

GREENFINITY

A LITTLE PIECE OF HEAVEN

i-Land, Wadala (E)

A rare pocket of heaven in suburban Mumbai, Ajmera Greenfinity comes as a breath of fresh air to the city-dweller in the configurations of 1 and 2 BHK apartments.

The rolling panoramic views, fresh air and ample sunshine are simple delights that'll fill your soul. Coupled with every lifestyle amenity that you may desire, life here is bound to be surreal and green in every way.



Scan QR Code for
360 degree
view of
the Apartments



Rendered Image



YOUR LITTLE PIECE OF
HEAVEN MAINTAINS YOUR
WORK-LIFE BALANCE.



- 10 mins away from BKC via BKC Chunnabhati Connector
- Close proximity to Eastern Freeway
- Only four apartments per floor to provide an air of exclusivity
- Unending greenery surrounding your home
- 360° panoramic views to welcome you each day
- Special Car Parking Tower for hassle-free Parking Facilities



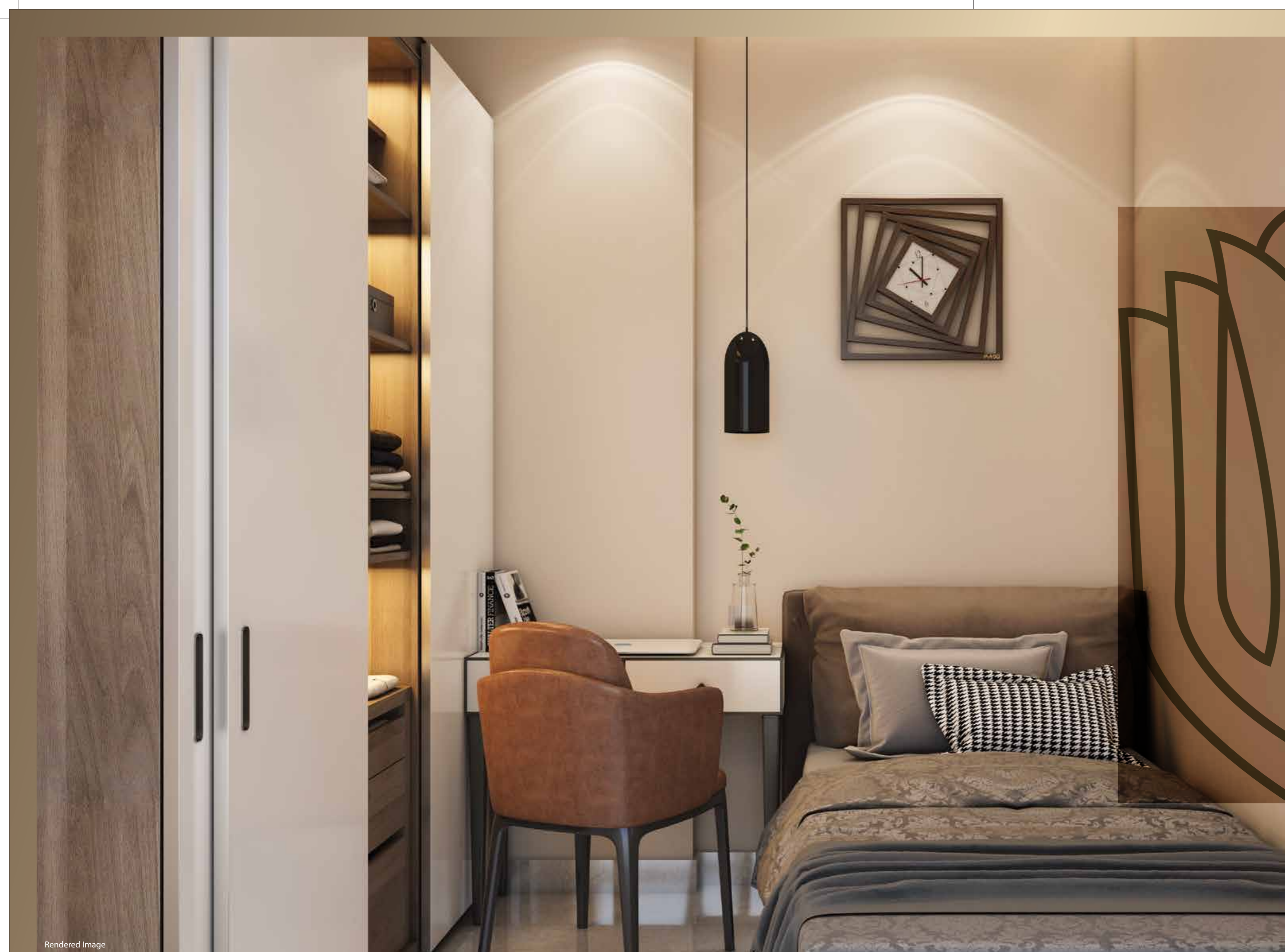
Scan QR code to
experience BKC
Connectivity Features.





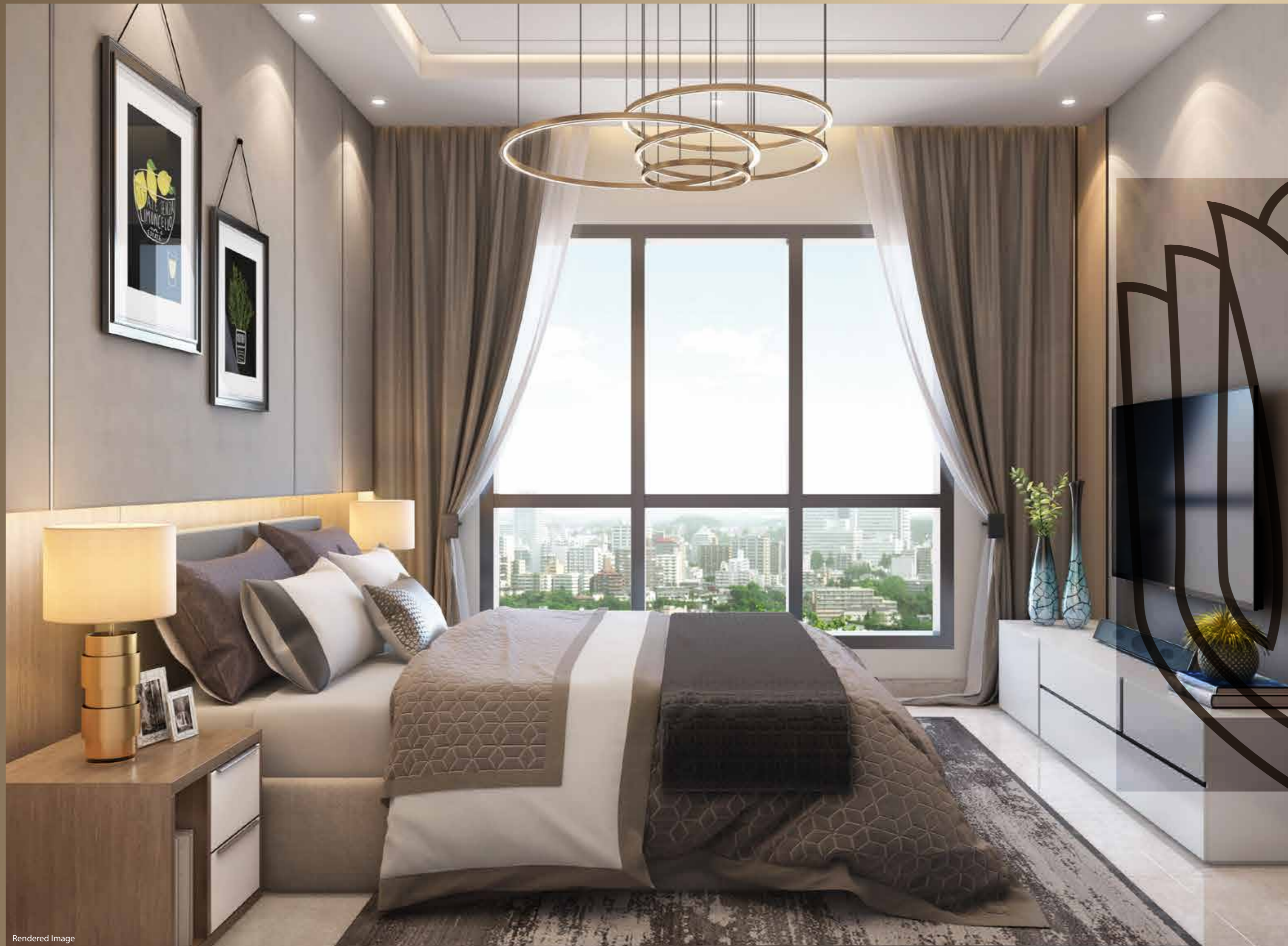
CHARMING AND INTUITIVELY
WELL-PLANNED LIVING ROOM AT
AJMERA GREENFINITY
MAKES A LASTING IMPRESSION OF
HAPPINESS AND POSITIVITY.





WELL-PLANNED
STUDY ROOM AT
AJMERA GREENFINITY MAKES YOU
WORK PASSIONATELY WITH
UTMOST ZEAL AND COMFORT.



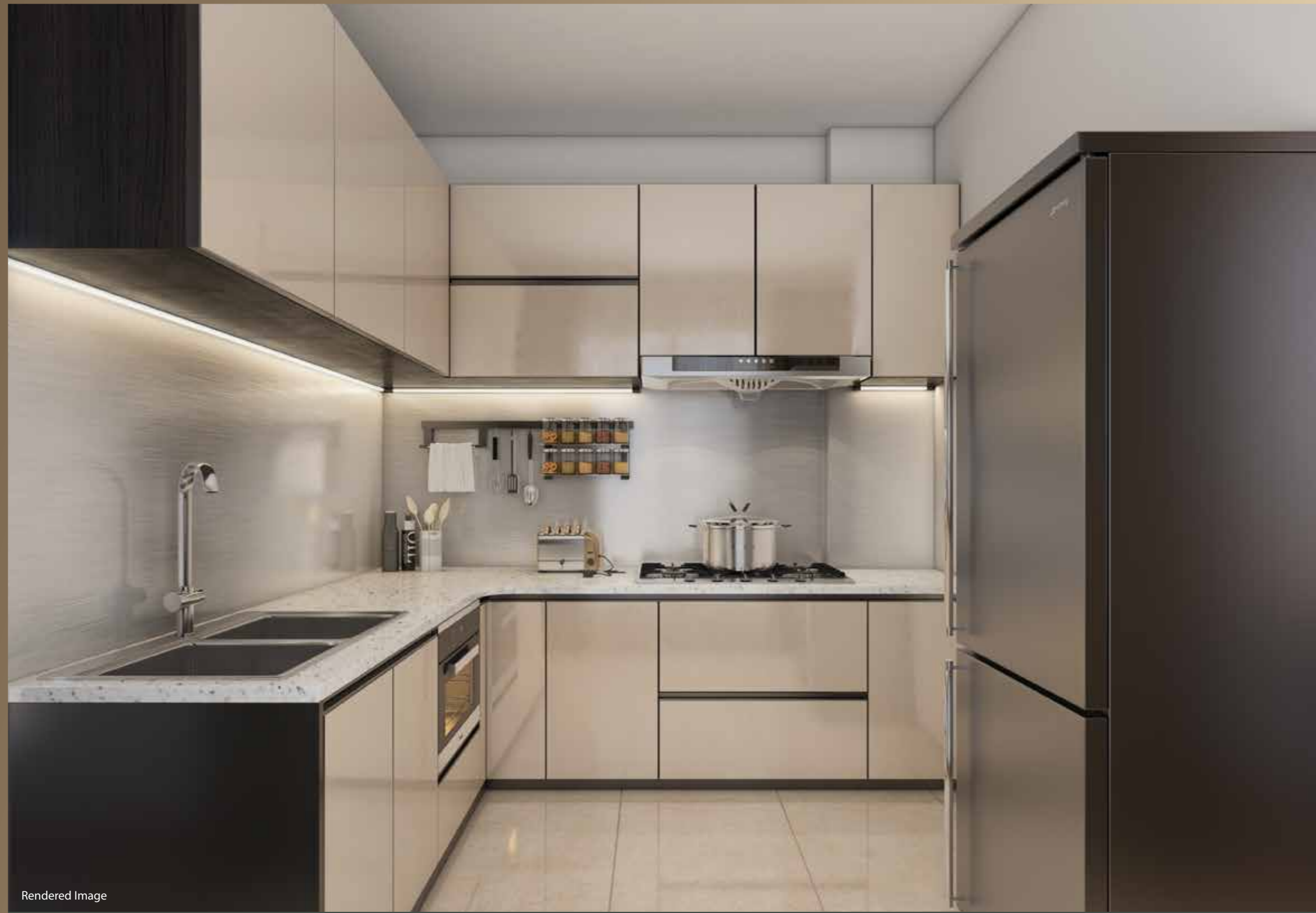


Rendered Image



SPECIALLY DESIGNED TO
LET IN AMPLE FRESH AIR AND
SUNLIGHT, YOUR BEDROOM AT
AJMERA GREENFINITY IS AN
IDEAL HAVEN TO START AND
END YOUR DAY PERFECTLY.





Rendered Image



YOUR BATHROOM AT AJMERA
GREENFINITY MAKES YOU UNWIND
AND REFRESH TO THE CORE.

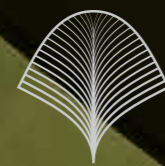


Rendered Image



EXPRESS YOUR CREATIVITY IN
FOOD AS THE KITCHEN AT
AJMERA GREENFINITY INSPIRES
YOU TO GO ALL OUT AND ABOUT.

SAVOUR LIFE'S JOYS WITH
HEAVEN-SENT AMENITIES.



Reference Image



TRANQUIL POINT

Curl up in sheer peace and solitude
with yourself or indulge in a
heart-to-heart talk with your loved
ones at the scenic and surreal
Tranquil Point.



Reference Image



Reference Image



Reference Image

- Connecting Walkway With Jogging Track
- Multi-play Court
- Cricket Pitch
- Swings Plaza
- Activity Lawn
- Eating Coves
- Movie Lounge
- Floor Games
- Stepped Seating
- Sculpture
- Seating Plaza between Trees
- Fruit Orchard
- Welcoming Entry Plaza
- Leisure Pavilion
- Ledge Seating with Connecting Pathway
- Reflexology Path
- Sculpture Plaza
- Spill Over Plaza

CLOUD ZONE

Soak in the realms of aquamarine skies rolling in the spheres of the finest of lifestyle services at the ever jovial and adventurous Cloud Zone.



Rendered Image

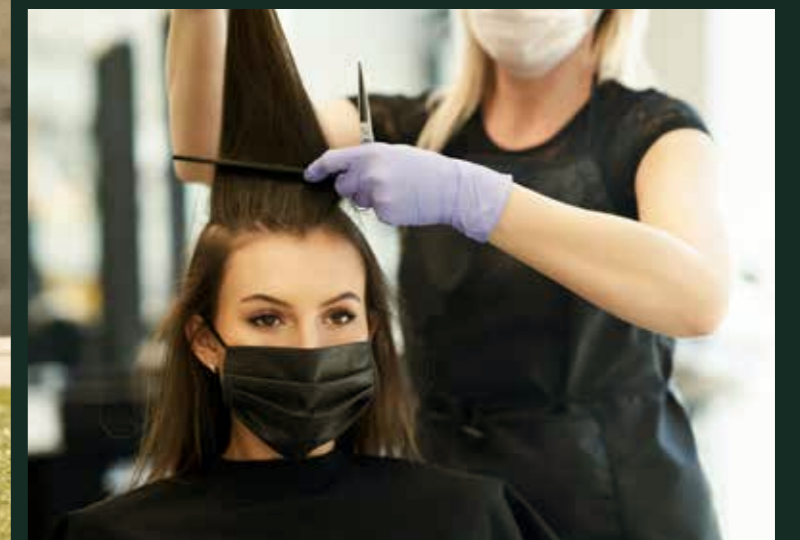


- Connecting Walkway with Jogging Track
- Meditation Lawn
- Outdoor Gym
- Board Game Pavilion
- Cocoon Swing Plaza
- Celebration Lawn & Deck
- Movie Screen Wall
- Jacuzzi Deck with Seating
- Star Gazing Deck
- Group Seating's Plaza

360° LIFESTYLE LUXURIES ADORN YOUR LITTLE PIECE OF HEAVEN.



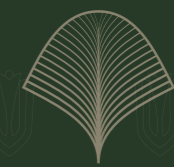
- Swimming Training- Michael Phelps Academy
- Ajmera i-Safe Lockers
- IMAX Theatre
- i-Land Sports Academy
- International Archery Training
- Indi-Karting Go-Kart
- Pharmacy
- Fashion Boutique
- Retail
- Ice Cream Parlour
- Salon
- Banks & ATM Branches





Rendered Image

ENJOY COUNTRYSIDE
VIEWS FROM YOUR
LITTLE PIECE OF HEAVEN.





Reference Image

YOUR LITTLE PIECE OF HEAVEN
ORNAMENTED WITH GREEN LUXURY.



VISTA

Vista 1 BHK Homes offer scenic and surreal views of natural greenery and lush landscapes calming your mind, body, and soul in the most enigmatic and marvelous way. At your Vista Homes you will find a reason to come home to soak and enjoy in the dominion of verdant greens and luxuriant lifestyle.

PANORAMA

Panorama 2 BHK Homes offer extensive 360° wide and absorbing visions of green meadows amidst the flourish of flora and fauna.

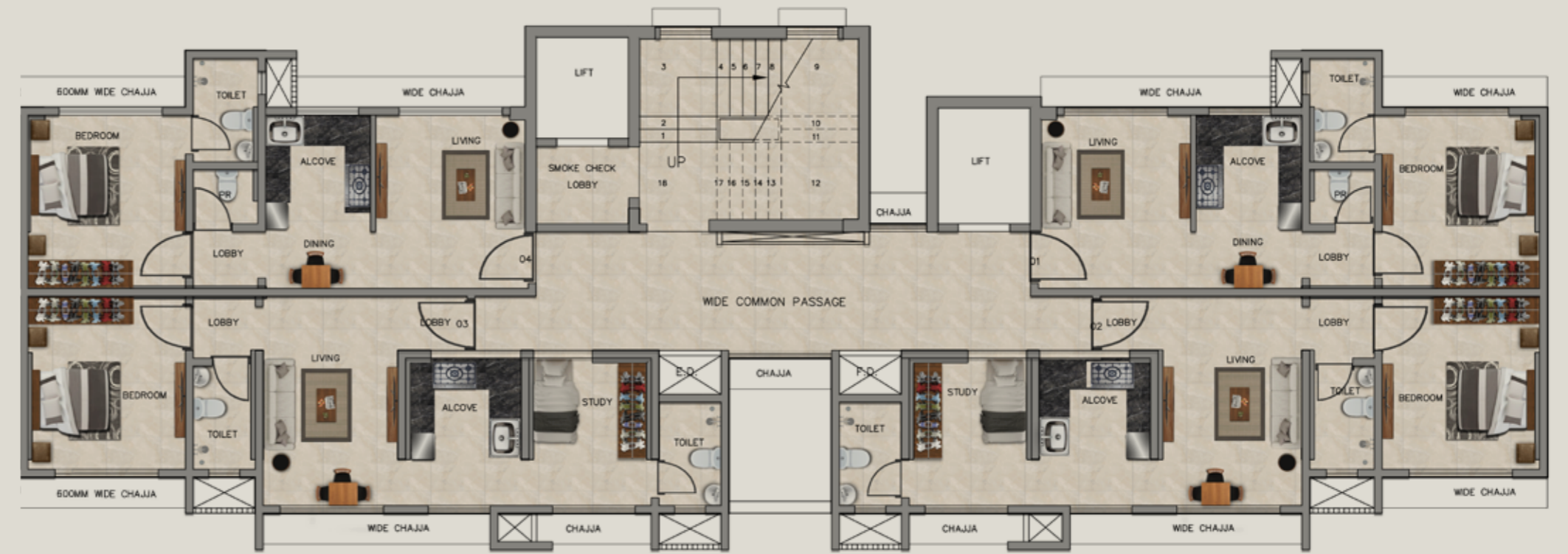
Right from enjoying a steaming cup of coffee to embracing nature in the most surreal fashion, your Panorama Homes offers all this and much more.



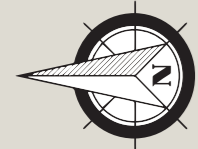
ACTUAL TYPICAL
FLOOR PLAN FOR WING C & D



WING-C



WING-D





VISTA 1 BHK



1 BHK UNIT PLAN

Sr. No.	Name of Room	Width in Feet & Inches	Width in Meters	Length in Feet & Inches	Length in Meters
1	Living Room	9'6"	2.9	10'0"	3.07
2	Kitchen & Dining Room	6'9"	2.05	10'0"	3.07
3	Powder Room	4'0"	1.25	3'5"	1.05
4	Bedroom	10'0"	3.07	10'7"	3.22
5	Toilet	4'3"	1.3	6'8"	2.02



PANORAMA 2 BHK



2 BHK UNIT PLAN

Sr. No.	Name of Room	Width in Feet & Inches	Width in Meters	Length in Feet & Inches	Length in Meters
1	Living & Dining Room	9'0"	2.71	13'4"	4.07
2	Kitchen	7'0"	2.15	9'5"	2.87
3	Study Room	7'3"	2.20	9'5"	2.87
4	Toilet 1	4'0"	1.22	6'8"	2.02
5	Bedroom	10'0"	3.07	10'9"	3.27
6	Toilet 2	3'8"	1.17	6'4"	1.92





Reference Image

52 YEARS OF TRUST & INNOVATION.



Over 52 Years, Ajmera has been the most preferred choice of thousands of families. We have built a legacy of creating mega structures that have become the benchmark of quality in real estate. We don't just craft exceptional homes, we aspire to deliver dreams.



45,000
HAPPY
FAMILIES



47 MILLION
SQ. FT. OF
DEVELOPMENT



28 MILLION
SQ. FT.
DELIVERED

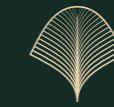


30 MILLION SQ. FT.
DEVELOPMENT
POTENTIAL
IN THE PIPELINE



PRESENCE
IN 3 COUNTRIES:
INDIA, BAHRAIN &
UNITED KINGDOM

FULL SPECTRUM OF EXCELLENCE.



CEMENT

Ajmera Cement Pvt Ltd

SPORTS

Ajmera i-Land
Sports Academy

EDUCATION

Ajmera Global School
Ajmera Vijay Nagar
High School
Smt. S.S. Ajmera School And
Junior College



Built on Trust

SOLAR POWER

Comet Power Pvt Ltd

LOGISTICS

Ajmera Logistic Park

SAFE DEPOSIT LOCKERS

Ajmera i-Safe

MASTERPIECES CRAFTED TO PERFECTION.



Ajmera Exotica

Rendered Image



Casa Vyoma

Rendered Image



Ajmera Nucleus

Rendered Image



Golden Gate

Rendered Image



New Era

Rendered Image



Ajmera Heritage City

Rendered Image



Ajmera Aria

Actual Image



Crossways, The Bishops Avenue

Rendered Image



Kingsborough

Rendered Image



Ajmera Annex

Rendered Image



Ajmera Infinity

Actual Image



Ajmera Lugaano

Rendered Image



Calico

Rendered Image



Southhall Mens Working Club

Rendered Image



The Mill House

Rendered Image

New Era, Kalyan - Mumbai
A JV of Ajmera & Mehta Group
OC Received

Ajmera Heritage City, Khardi - Mumbai
MAHARERA REG NO. P51700011840

Ajmera Aria - Pune
OC Received

Ajmera Exotica - Wagholi, Pune
MAHARERA REG NO. P52100015618

Casa Vyoma, Ahmedabad
A JV of Ajmera & Sheetal Infra -
PHASE 1 - PR/GJ/ AHMEDABAD/AHMADABAD CITY/ AUDA /
RAA00022/ 290817

PHASE 2 - PR/GJ/ AHMEDABAD/AHMADABAD CITY/ AUDA /
RAA00015/ 280817

Ajmera Annex - Bangalore
Ajmera Annex Residential -
PRM/KA/RERA/1251/310/PR/171014/000288
Ajmera Annex Commercial -
PRM/KA/RERA/1251/310/PR/171014/000302

Ajmera Infinity - Bangalore
OC Received

Ajmera Lugaano - Bangalore
MAHARERA No: PRM/KA/RERA/1251/309/PR/180728/001945

Ajmera Nucleus - Bangalore
MAHARERA No. : PRM/KA/RERA/1251/310/PR/181210/002207

Golden Gate, Bahrain
Highest Residential 2 towers, Bahrain
746 luxury apartments
The joint venture between Ajmera, Mayfair & with
Kooheji Golden Gate (KGG) brings you the finest of living at Bahrain Bay

Oliver Burns - United Kingdom

Park Works - United Kingdom

Calico - United Kingdom

Southhall Mens Working Club - United Kingdom

The Mill House - United Kingdom