



A Project By



**Credits**

Architect  
**Avishkar Consultancy**  
020-30203035

Legal Advisor  
**Adv Narendra Jadhav**

R.C.C. Consultant  
**Shishir Dawade**

Joint Venture with  
**PBD evelopers**

Designed at  
**Prowiz Design**

**FOR BOOKING : 7721 841 841 / 7721 843 843 / 020-65360135**

Gat no. 47,48 , At Post- Bhukum, Tal- Mulshi, Dist- Pune. Pin 412115.  
Email id : skysparsh@gmail.com www.skysparsh.in

*Rediscover  
your  
Passion*





## the galaxy turns greens



Hear the songs of your joyous heart during the excursion into the garden in the twittering of birds, colourfulness of butterflies, cascades of fountains, the ripples in the water and sweet breathing of flowers.



Skysparsh Regency homes are planned and designed with an unremitting focus on luxury and practicality. Cutting edge designer homes, hi-tech security and many other features make Skysparsh Regency homes a perfect place for the Maximum Life.



Our Apartments, Villas and Row Houses are designed keeping in mind the very best architectural standards and luxuries. Set away from the bustling city scene, our concept township is completely set in the beautiful, silent and pristine beauty which are self-contained and eco-friendly city in a town. We believe that your home is not just a place to retire at the end of the day, rather it is your piece of privacy and comfort, continuing beyond the four walls into your serene environs. At Sky Sparsh Regency, we build - concept homes.





## Our 'atmosphere' is made up of all comforts

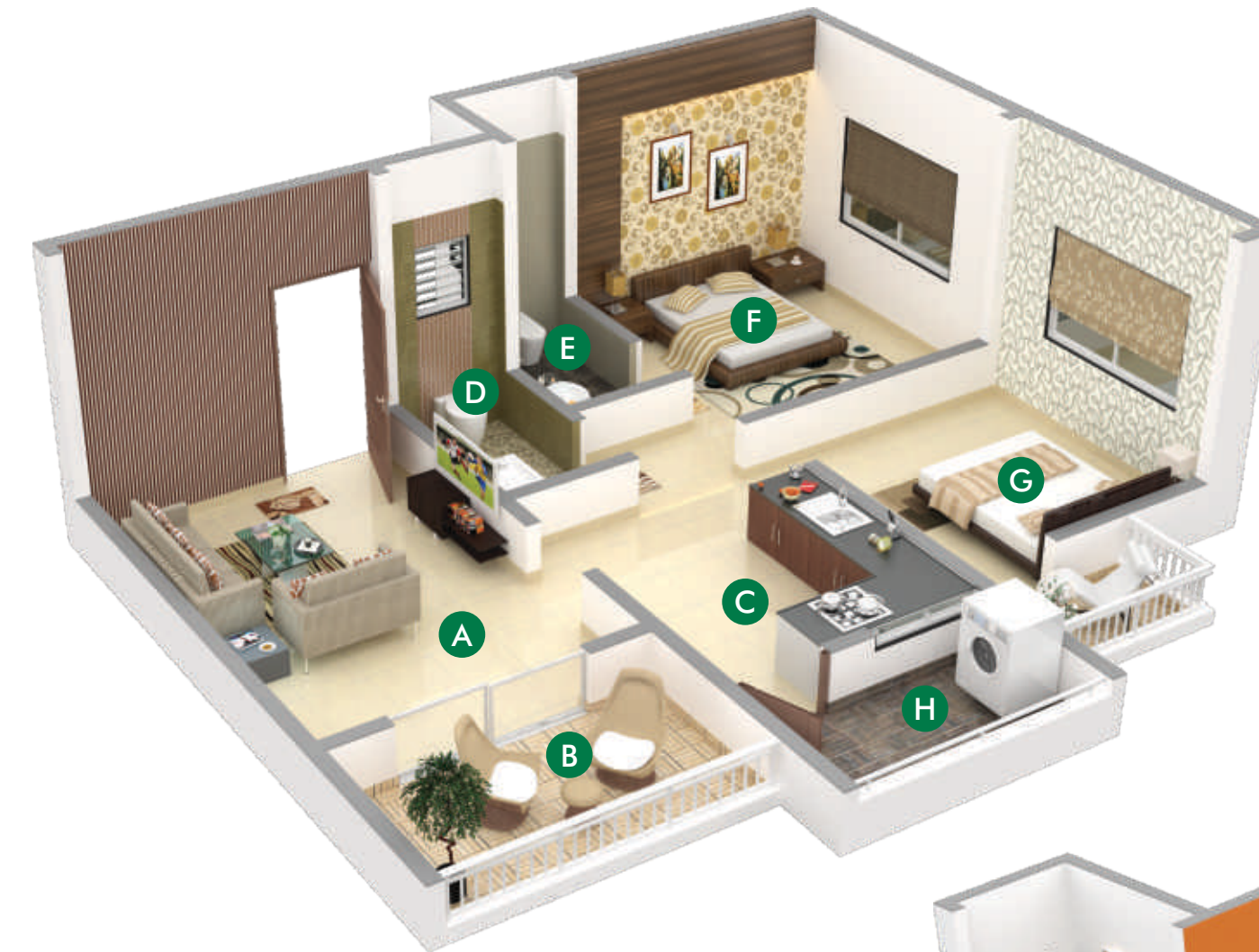
The fun of opulent living comes from the ambience and diversity of comforts. Every member of a family will experience harmonious living with their matching friends only in our club atmosphere to meet different taste of leisure. Your universe will never be cocooned with the boredom of monetary. Everyday will have a different source of joy and reverberate with the sounds of laughter and merriment **AMENITIES.**

- Club House with Multipurpose Hall ● Grand Entrance Gate with Security Cabin
- Children's Play Area ● Senior Citizens Sitting Zone
- Boundary Plantation with Trees ● Party Lawn
- Landscape Designed by Professionals Wooden Trellis with Creepers
- Street Light all around the complex ● Rain Water Harvesting
- Fire Fighting System ● Gymnasium with modern equipments



# LAYOUT OF YOUR SKY SPARSH REGENCY

- A - Entrance Gate
- B - A Wing
- C - Club House
- D - Children's Play Area
- E - Children's Play Area
- F - B Wing
- G - Amenity Space
- H - Gazebo Sitting
- I - Senior Citizen Sitting

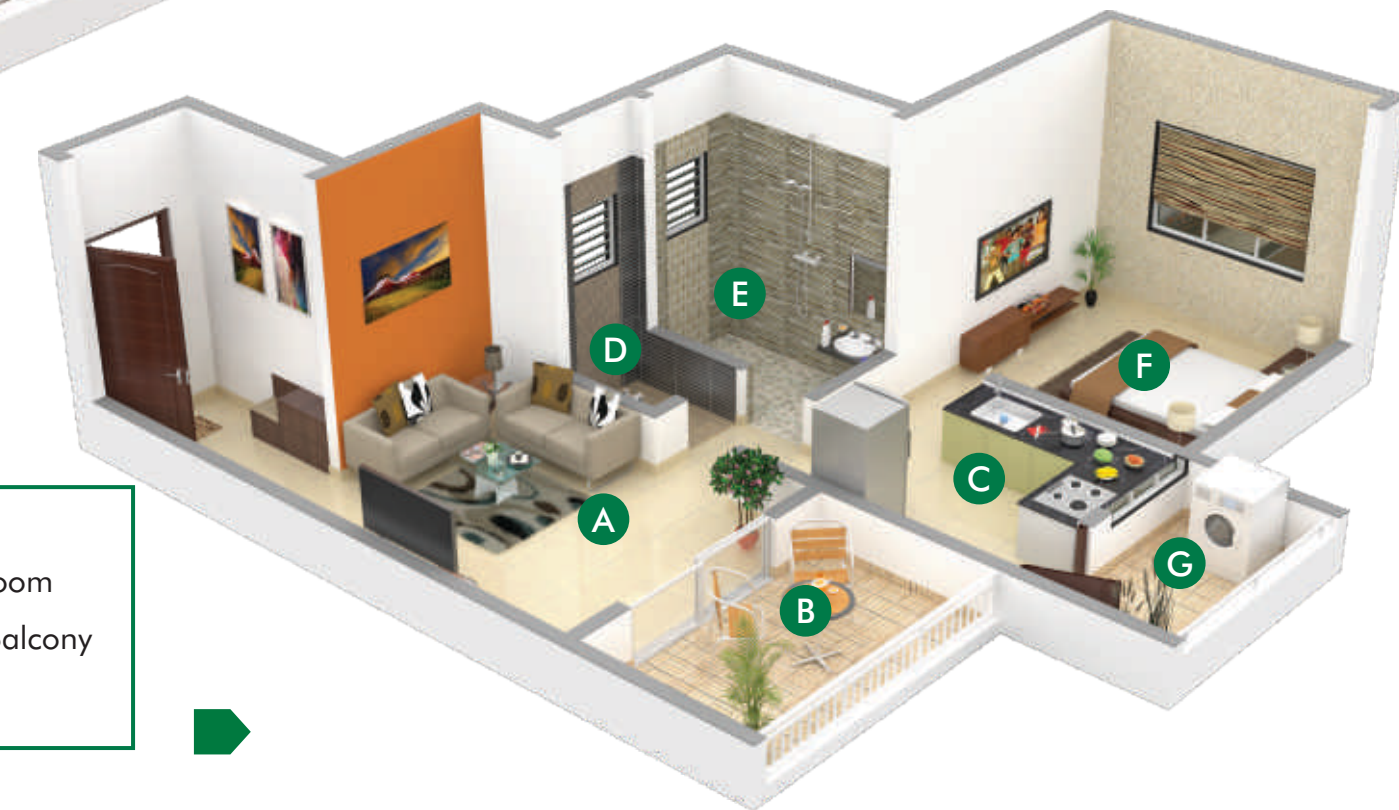


## 2 BHK

- A - Living Room
- B - Terrace
- C - Kitchen
- D - Toilet
- E - Toilet
- F - Master Bedroom
- G - Bedroom
- H - Dry Balcony

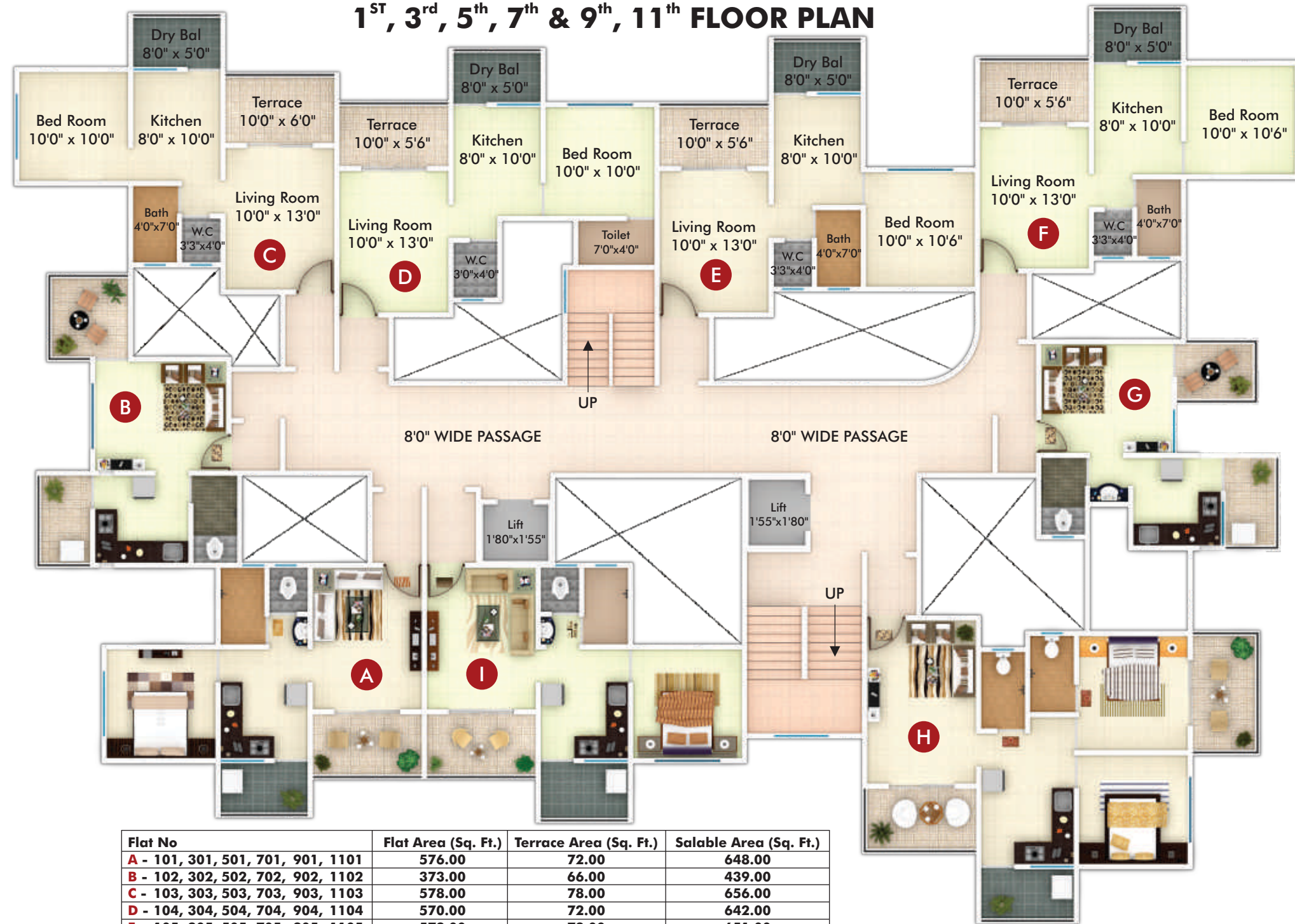
## 1 BHK

- A - Living Room
- B - Terrace
- C - Kitchen
- D - Toilet
- E - Toilet
- F - Bedroom
- G - Dry Balcony



## A WING

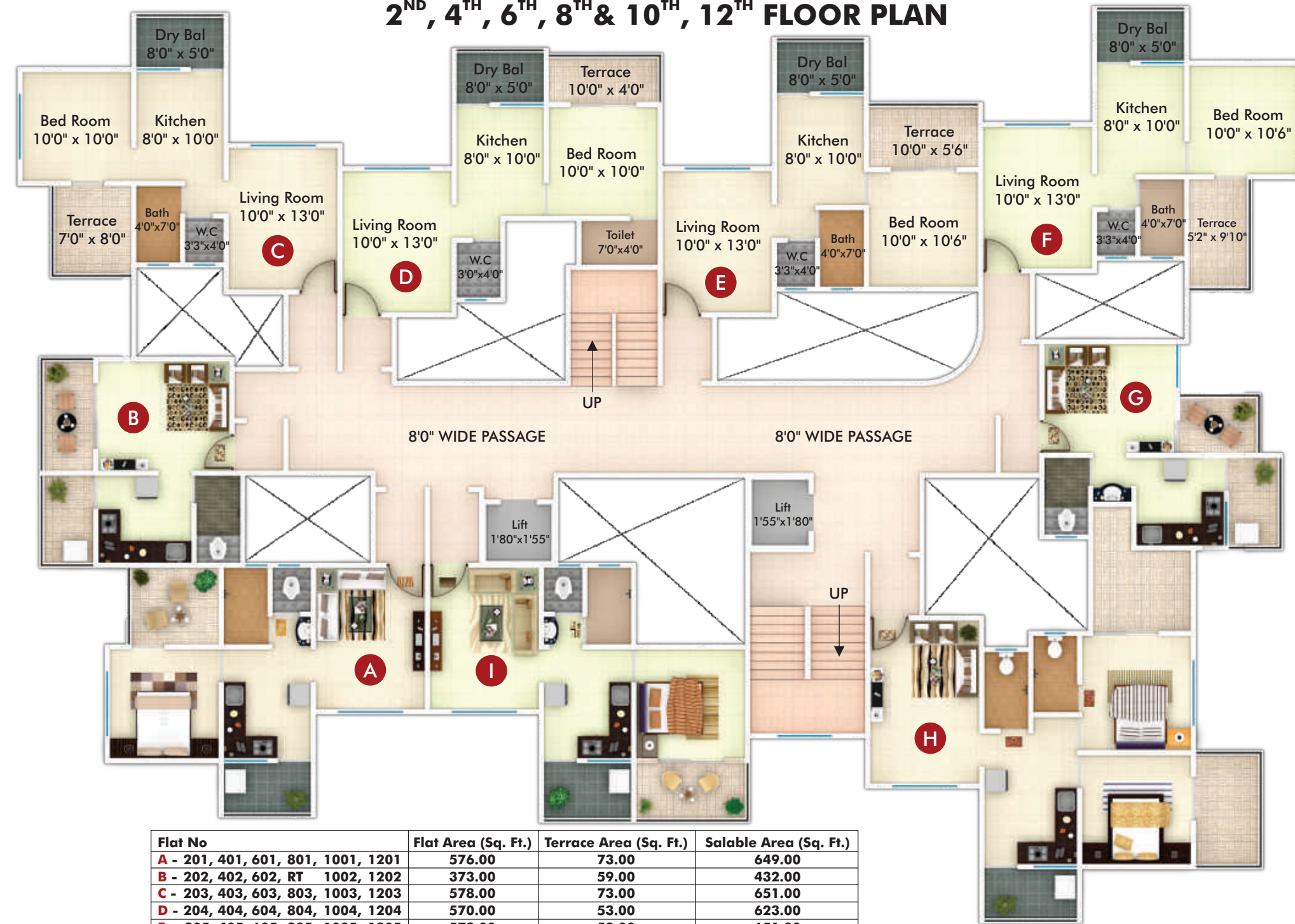
### 1<sup>ST</sup>, 3<sup>RD</sup>, 5<sup>TH</sup>, 7<sup>TH</sup> & 9<sup>TH</sup>, 11<sup>TH</sup> FLOOR PLAN



Flat No	Flat Area (Sq. Ft.)	Terrace Area (Sq. Ft.)	Salable Area (Sq. Ft.)
A - 101, 301, 501, 701, 901, 1101	576.00	72.00	648.00
B - 102, 302, 502, 702, 902, 1102	373.00	66.00	439.00
C - 103, 303, 503, 703, 903, 1103	578.00	78.00	656.00
D - 104, 304, 504, 704, 904, 1104	570.00	72.00	642.00
E - 105, 305, 505, 705, 905, 1105	579.00	72.00	651.00
F - 106, 306, 506, 706, 906, 1106	572.00	72.00	644.00
G - 107, 307, 507, 707, 907, 1107	374.00	46.00	420.00
H - 108, 308, 508, 708, 908, 1108	785.00	150.00	935.00
I - 109, 309, 509, 709, 909, 1109	576.00	72.00	648.00

## A WING

### 2<sup>ND</sup>, 4<sup>TH</sup>, 6<sup>TH</sup>, 8<sup>TH</sup> & 10<sup>TH</sup>, 12<sup>TH</sup> FLOOR PLAN



Flat No	Flat Area (Sq. Ft.)	Terrace Area (Sq. Ft.)	Salable Area (Sq. Ft.)
A - 201, 401, 601, 801, 1001, 1201	576.00	73.00	649.00
B - 202, 402, 602, RT 1002, 1202	373.00	59.00	432.00
C - 203, 403, 603, 803, 1003, 1203	578.00	73.00	651.00
D - 204, 404, 604, 804, 1004, 1204	570.00	53.00	623.00
E - 205, 405, 605, 805, 1005, 1205	579.00	53.00	632.00
F - 206, 406, 606, 806, 1006, 1206	572.00	68.00	640.00
G - 207, 407, 607, RT 1007, 1207	374.00	46.00	420.00
H - 208, 408, 608, 808, 1008, 1208	785.00	180.00	965.00
I - 209, 409, 609, 809, 1009, 1209	576.00	65.00	641.00

### 1<sup>ST</sup>, 3<sup>RD</sup>, 5<sup>TH</sup>, 7<sup>TH</sup>, 9<sup>TH</sup> & 11<sup>TH</sup> FLOOR PLAN

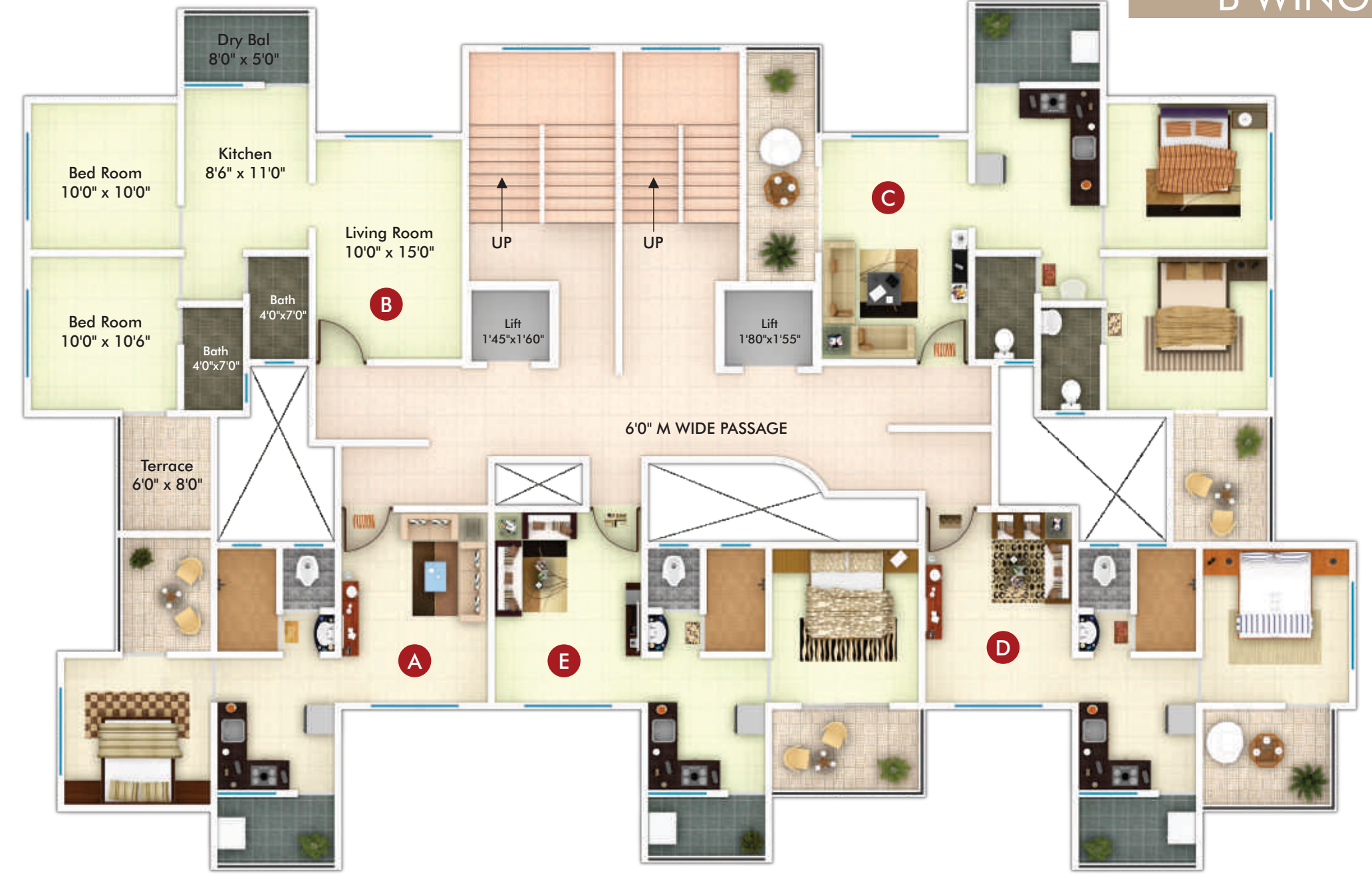
### B WING



Flat No	Flat Area (Sq. Ft.)	Terrace Area (Sq. Ft.)	Salable Area (Sq. Ft.)
A - 101, 301, 501, 701, 901, 1101	547.00	78.00	625.00
B - 102, 302, 502, 702, 902, 1102	556.00	78.00	634.00
C - 103, 303, 503, 703, 903, 1103	797.00	93.00	890.00
D - 104, 304, 504, 704, 904, 1104	817.00	93.00	910.00
E - 105, 305, 505, 705, 905, 1105	574.00	72.00	646.00

### 2<sup>ND</sup>, 4<sup>TH</sup>, 6<sup>TH</sup>, 8<sup>TH</sup> & 10<sup>TH</sup> FLOOR PLAN

### B WING



Flat No	Flat Area (Sq. Ft.)	Terrace Area (Sq. Ft.)	Salable Area (Sq. Ft.)
A - 201, 401, 601, 801, 1001	547.00	72.00	619.00
B - 202, 402, 602, 802, 1002	555.00	61.00	616.00
C - 203, 403, 603, 803, 1003	795.00	61.00	856.00
D - 204, 404, 604, 804, 1004	817.00	168.00	985.00
E - 205, 405, 605, RT 1005	574.00	74.00	648.00

## SPECIFICATION

### STRUCTURE

- Earthquake Resistance RCC Structure
- Brickwork for internal walls & 6" for external wall
- Neeru finish plaster internally, Sand Face Plaster externally

### KITCHEN

- Green Marble kitchen platform • S S Sink
- Dado ceramic tiles up to Lintel level above platform
- Provision for water purifier, provision to exhaust fan

### FLOORING

- Vitrified 2'X2' Flooring Tiles in entire apartment

### TOILETS

- Designer wall tiles up to lintel level in bathroom
- 4' height wall tiles in WC
- Good quality concealed plumbing & C. P. fittings in toilets of good quality Sanitary Ware for all toilets

### DOOR

- Designer laminated main door with good quality door fittings
- Good quality internal flush doors with standard fittings
- Frech door to terraces
- Green Marble door frames to all toilets

### WINDOWS

- 3-Track powder coated aluminum sliding windows
- Marble Granite sills for all windows

### ELECTRIFICATION

- Concealed copper wiring • Adequate electrical points in all rooms
- Electrical switches of standard make / equivalent

### PAINTING

- Oil Bound Distemper to internal walls • Cement paint to external walls

### CONVENIENCES

- Genset backup for Lifts, Pumps & Common Areas & Clubhouse
- Provision for Telephone point in living room
- Solor System in common bathroom
- Letter Box for each flat
- Safety grills for all windows except toilets
- CCTV in common areas

