



# NBCC Heights

SECTOR 89, PATAUDI ROAD, GURUGRAM, HARYANA



NBCC has obtained

ISO 9001:2008 Certificate

for its Consultancy &

Project Management Divisions.



Founded in 1960 as a Govt. of India Civil Engineering Enterprise, NBCC with its Headquarter in Delhi, today, holds the status of Navratna CPSE, and has emerged as the undisputed leader in the Construction Sector on the back of its capabilities, innovative approach, adherence to highest standard of quality, timely delivery and a dedicated workforce.

NBCC's areas of operation encompass three (03) Primary Segments namely:

- **Project Management Consultancy (PMC)** : Executing landmark projects in diversified sectors as also Redevelopment Projects for Government.
- **Engineering Procurement & Construction (EPC)**: Working in a niche market and constructing Chimneys, Cooling Towers for Power Sector.
- **Real Estate Development**: Developing Residential and Commercial inventories for Governments and the Public at large  
With huge Market Capitalisation, NBCC is listed with both the Indian Stock Exchanges namely, National Stock Exchange (NSE) and Bombay Stock Exchange (BSE).

The Company has posted a substantial growth since 2002-03 and its top line touched Rs 10,151.37 crore in FY2018-19 against a meagre turnover of Rs 494 Crore in FY2002-03.

Of late, NBCC entered a new business vertical named Re-Development of Government Properties, under its PMC Segment. The maiden project in this vertical called Re-development of Delhi's New Motibagh GPRA Complex successfully completed by the Company, earned it great appreciation, opening up new opportunities for the company in this vertical one after the other, eventually making this vertical, the prime focus area in its operation.

NBCC ventured into Overseas Operations in the year 1977, executing projects of diverse nature in countries such as Libya, Iraq, Yemen, Nepal, Maldives, Mauritius, Turkey, Botswana. Presently, the Company has its presence in Oman, Mauritius and Maldives, implementing various projects and earning consistent revenue



**Note** : Visual representations shown in the brochure are purely conceptual and has no legal sanctity and is not a legal offering. All building plans, specifications, area, layout plans etc. shown in the brochure are provisional and are subject to change by the company & sanctioning / statutory authorities.  
1 sqm = 10.764 sft.(Conversion Ratio for measurement )



## **SITE Location**

NBCC HEIGHTS Sector 89, Pataudi Road, Gurgaon, Haryana,  
Land Area approx. 11 acres.

The Licence No. 04 of 2009 dated 13. 2. 2009 was transferred in favour of National Buildings Construction Corporation Limited vide Endst. No. 5 DP-V-LC-1751/2010/2623 dated 3. 3. 2010 by Director Town & Country Planning, Haryana.

Director Town & Country Planning, Haryana has approved the building plan/permission for construction of group housing colony on this Plot Vide Letter No. ZP-537/JN(NK)/2010/18048 dated 28. 12. 2010.

Director Town & Country Planning, Haryana has issued the Occupation Certificate to NBCC (INDIA) LTD vide No. ZP-537/SD(BS)/2017/ 17233 dated 19.07.2017.

## **FEATURES**

- Located on Main Pataudi Road, Sector-89, Gurgaon.
- 75m wide Approach Road (Pataudi Road) with 18m wide Green Belt & 12m wide Service Road.
- Easily Approachable from National Highway 8 & Dwarka Expressway.
- Gated community.
- Convenient Shops for Residents, Nursery School.
- High speed Elevators, Dedicated Car Parking for each Apartment.
- Community Center with Multi Purpose Hall.



75 Meter Wide Pataudi Road

24.0 M WIDE ROAD

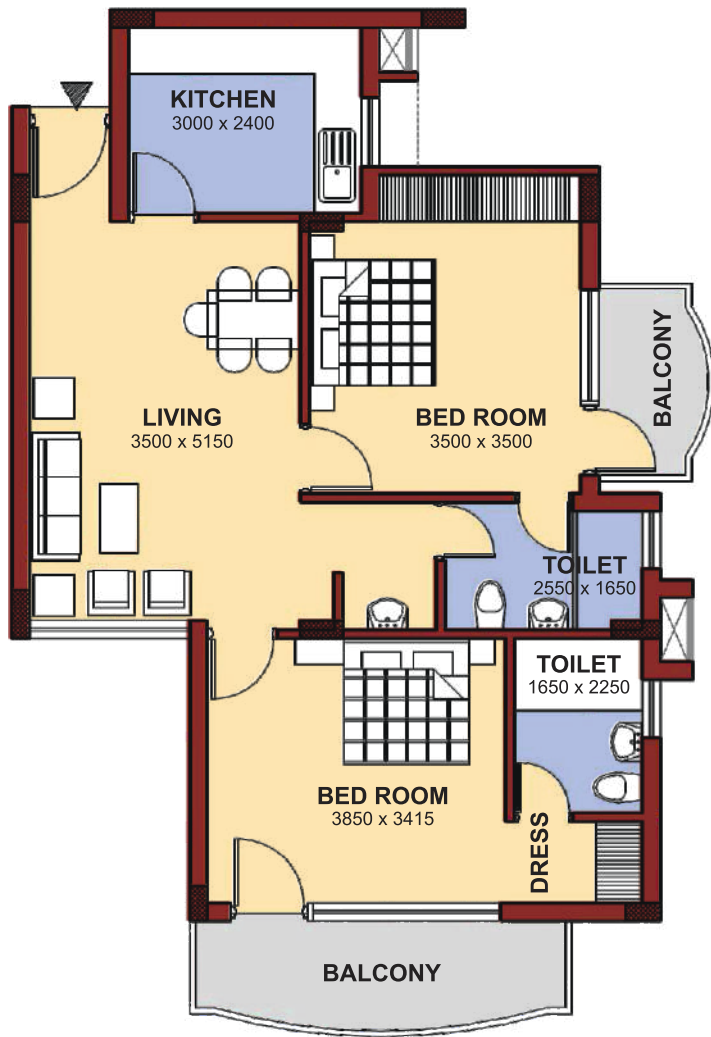


## TYPE - I TWO BEDROOM • UNIT (2BHK)

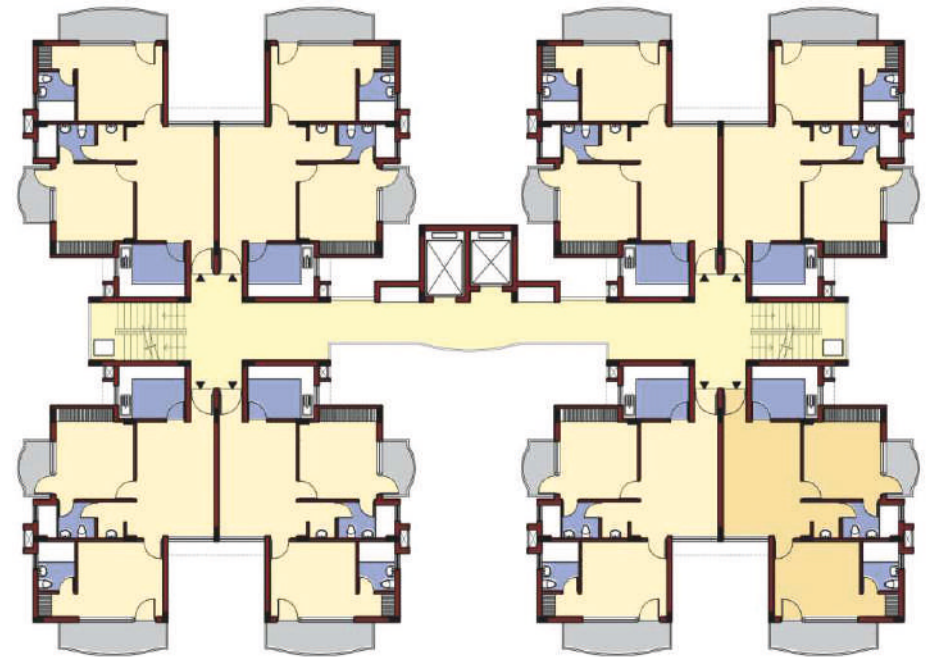
Built-up Area i/c Balcony	916 sft.
<b>Total Super Area (Appx)</b>	<b>1,140 sft.</b>
Carpet area (approx)	709 sft.

<b>Attached Parking Slots :</b>	
Car (Covered)	1
Car (Open)	Nil
Scooter (Covered)	Nil

### Typical Unit



### Floor Plan



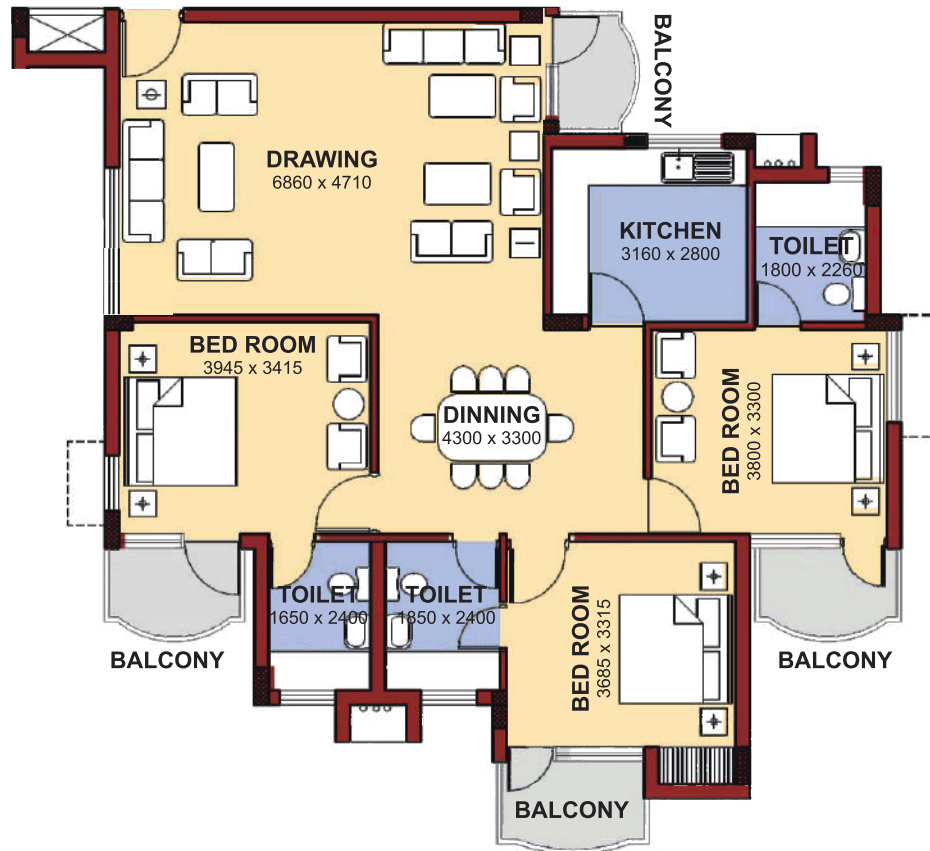
BLOCK - K

## TYPE - II THREE BEDROOM • UNIT (3BHK)

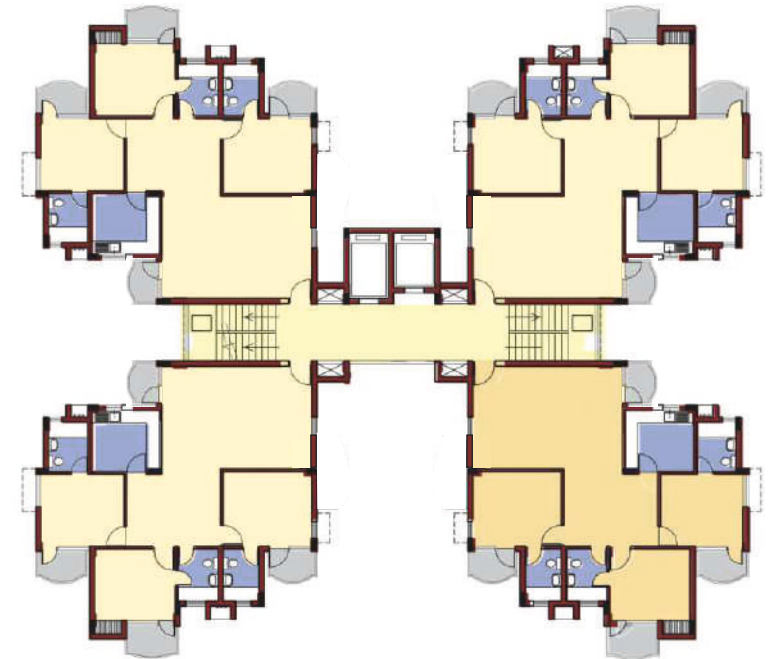
Built-up Area i/c Balcony	1,457 sft.
<b>Total Super Area (Appx)</b>	<b>1,752 sft.</b>
Carpet area (approx)	1148 sft.

<b>Attached Parking Slots :</b>	
Car (Covered)	1
Car (Open)	Nil
Scooter (Covered)	1

## Typical Unit



## Floor Plan



BLOCK - G, H & J

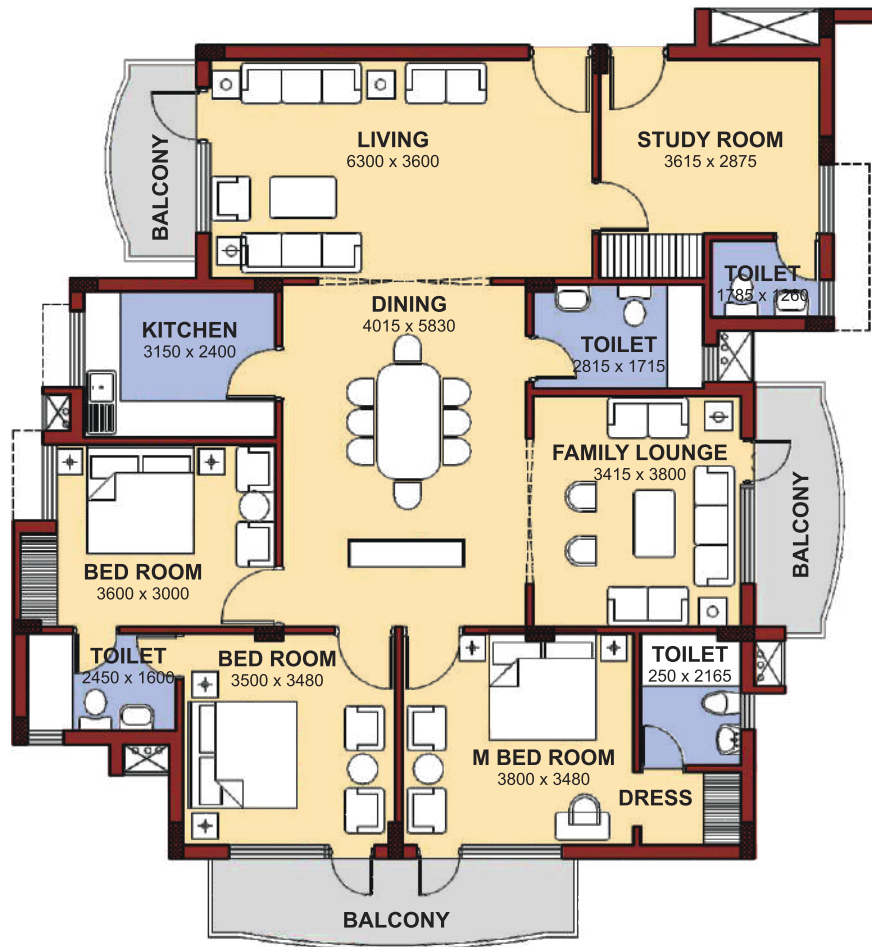
## TYPE - III THREE BEDROOM + STUDY • UNIT (3BHK+S)

Built-up Area i/c Balcony	1,799 sft.	<b>Attached Parking Slots :</b>
<b>Total Super Area (Appx)</b>	<b>2,125 sft.</b>	Car (Covered) 1
Carpet area (approx)	1,397 sft.	Car (Open) 1
		Scooter (Covered) NIL

### Typical Unit



Floor Plan



BLOCK - B & C

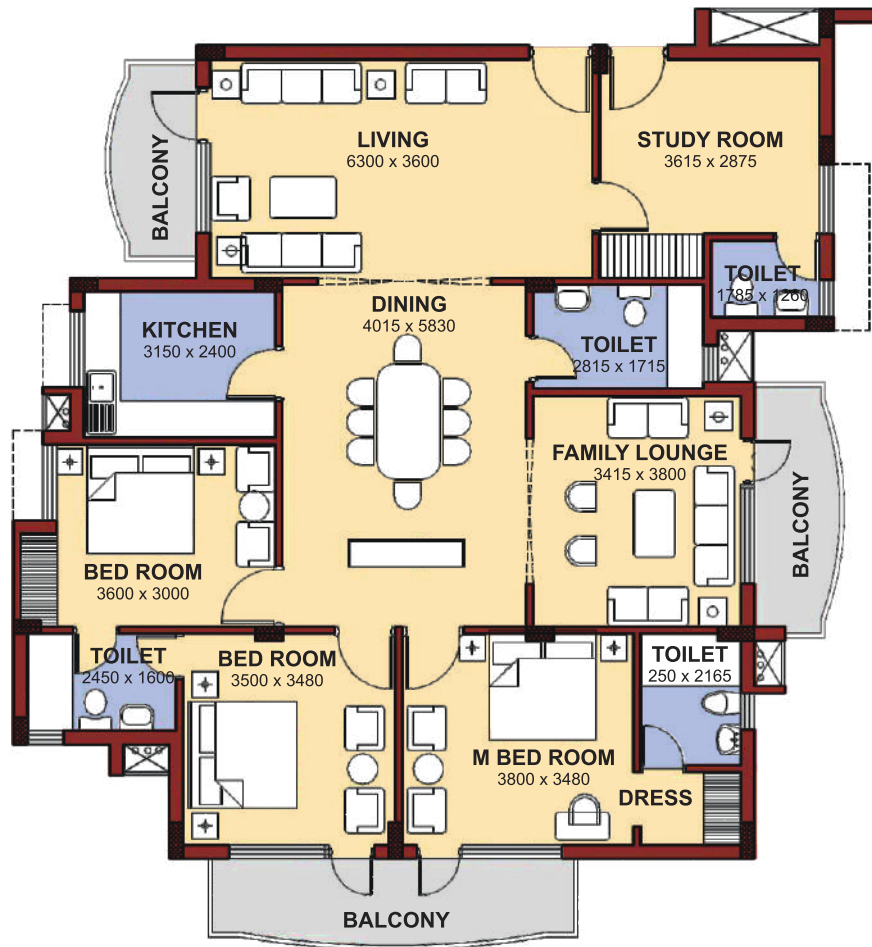
## TYPE - IV THREE BEDROOM + STUDY • UNIT (3BHK+S)

Built-up Area i/c Balcony	1,799 sft.	<b>Attached Parking Slots :</b>
<b>Total Super Area (Appx)</b>	<b>2,125 sft.</b>	Car (Covered) 1
Carpet area (approx)	1,397 sft.	Car (Open) 1
		Scooter (Covered) Nil

## Typical Unit



## Floor Plan



BLOCK - A & D

## TYPE - V FOUR BEDROOM + STUDY • UNIT (4BHK+S)

Built-up Area i/c Balcony	2,147 sft.	<b>Attached Parking Slots :</b>
<b>Total Super Area (Appx)</b>	<b>2,458 sft.</b>	Car (Covered) 1
Carpet area (approx)	1,638 sft.	Car (Open) 1
		Scooter (Covered) Nil

### Typical Unit



### Floor Plan



BLOCK - F

## TYPE - VI FOUR BEDROOM + SERVANT • UNIT (4BHK+S)

Built-up Area i/c Balcony	2,147 sft.	<b>Attached Parking Slots :</b>
<b>Total Super Area (Appx)</b>	<b>2,462 sft.</b>	Car (Covered) 2
Carpet area (approx)	1,638 sft.	Car (Open) NIL
		Scooter (Covered) Nil

### Typical Unit

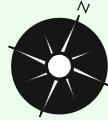


### Floor Plan



BLOCK - E

## Location Map of Site



**NBCC**  
**Heights**  
SECTOR 89  
**GURUGRAM**



**NBCC (INDIA) LIMITED**  
(A Government of India Enterprise)

NBCC Place, Pragati Vihar, Bishma Pitamah Marg, New Delhi-110003  
Telephone : 011 - 46990020 | E-mail : repre@nbccindia.com

[www.nbccindia.com](http://www.nbccindia.com)