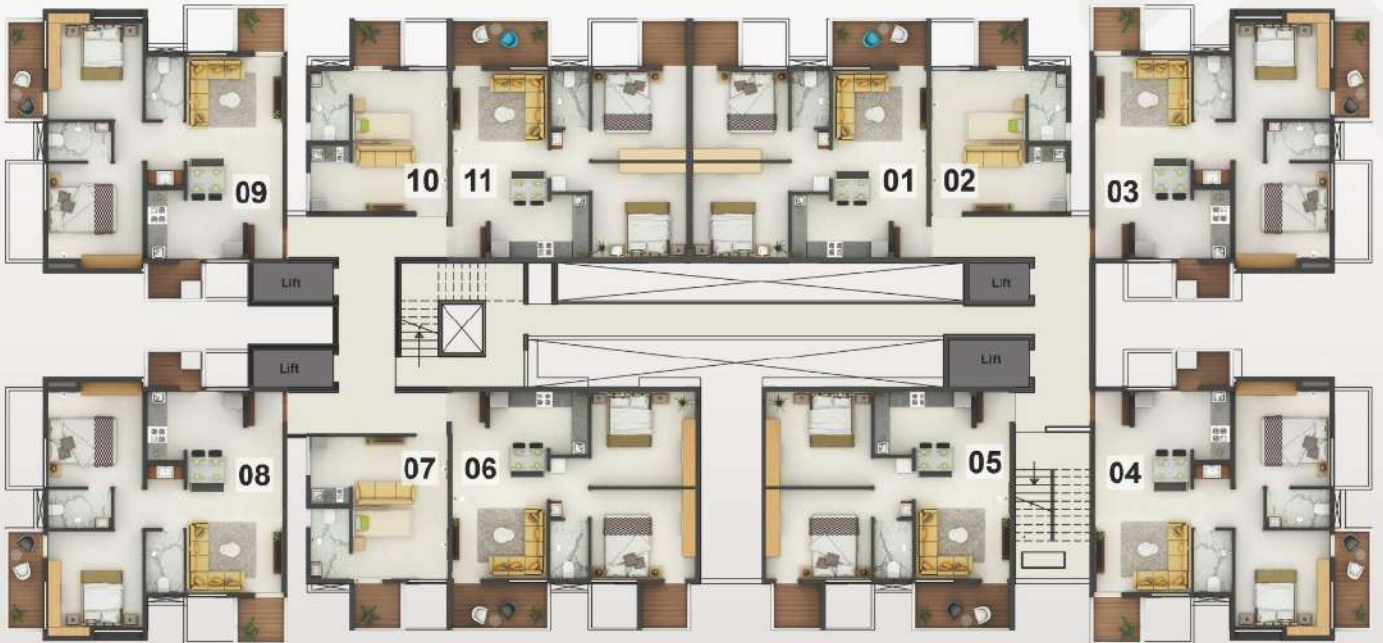






TYPICAL FLOOR PLAN - EVEN



2nd, 4th, 6th, 10th FLOOR PLAN



PRITHVI
PROXIMUS
 LIVE CONNECTED

2 BHK & Studio Apartments, opp. Magarpatta City

2 BHK FLAT 3, 4, 8, 9	CARPET AREA 556 sq. ft.	TERRACE AREA		DRY BALCONY AREA 23.70 sq. ft.
		1	2	
		37.50 sq. ft.	23.70 sq. ft.	



THE PERFECT FAMILY

The highlight: 3 side open, well-ventilated corner flats
 For those who energize with the fresh air



MahaRERA No.: P52100021774

PRITHVI
PROXIMUS
 LIVE CONNECTED

2 BHK & Studio Apartments, opp. Magarpatta City

STUDIO 2, 7, 10	CARPET AREA	TERRACE AREA
	207.75 sq. ft.	24.15 sq. ft.



SOLO

The highlight: Optimum space
 For those who are always on the move



MahaRERA No.: P52100021774

PRITHVI
PROXIMUS
 LIVE CONNECTED

2 BHK & Studio Apartments, opp. Magarpatta City

2 RHK FLAT 5 & 6	CARPET AREA 490.30 sq. ft.	TERRACE AREA	
		1 47.52 sq. ft.	2 24.20 sq. ft.

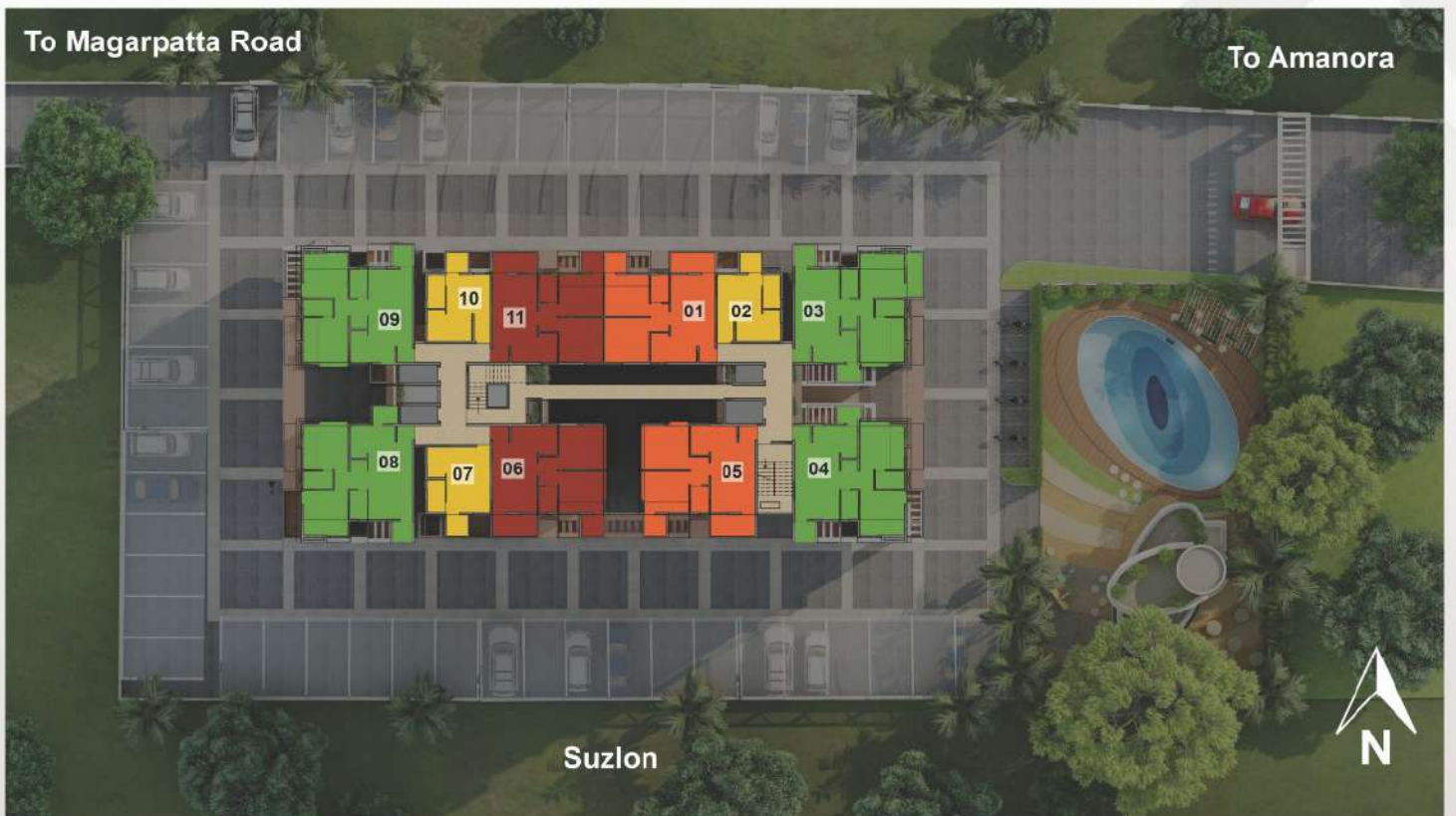
HAPPY COUPLES

The highlight: 2 terraces
 For those who love beautiful views



MahaRERA No.: P52100021774

AERIAL VIEW



PRITHVI
PROXIMUS
LIVE CONNECTED

2 BHK & Studio Apartments
opp. Magarpatta City

Life is all about making the most of every moment. Presenting Prithvi Proximus, a contemporary living destination, designed to transform your routine. With an incredible proximity to workplaces, you will get a lot of free time to explore a number of activities.



Artist's Impression

MAKE YOUR ROUTINE EXCITING



Silent Disco



Grand Entrance Lobby



Crèche



Well-equipped Gymnasium



12-seat Theatre



Karaoke Room



Indoor Games Room



Yoga Area



Library



Swimming Pool



Multipurpose Banquet Area

SPECIFICATIONS

- Heat-resistant lightweight AAC blocks in every wall • RCC frame earthquake-resistant structure
- Wooden flooring for master bedroom • 800 mm x 800 mm vitrified flooring for master bedroom
- Kohler or sanitaryware of a similar brand and many more...

LIVE CONNECTED

Magarpatta as a location needs no introduction. Located in the eastern part of Pune, it's a great confluence of workplaces, residential clusters, healthcare centres, schools and much more. Prithvi Proximus is strategically located and shares its campus with TCS, Suzlon and HDFC School.

So book an apartment at Prithvi Proximus and maximise your living experience.

EASY ACCESS TO:

- Koregaon Park
- Camp
- Kalyani Nagar
- Kharadi
- Viman Nagar

