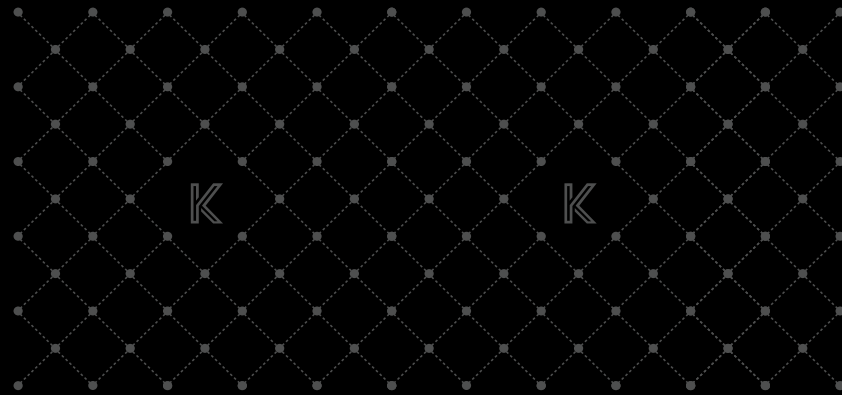


K
TOWN

KIWALE



BETTER *homes*



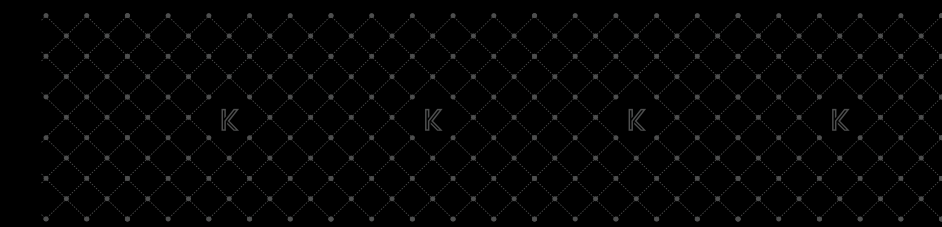
"If you do it right, it'll last forever. At K, we believe in doing things right. Perfection is perception, you can reach close to it when you do things in a better way each day."

Sumit Tayal

Managing Director, Unique Spaces



**CREATING
BETTER SPACES**
that enrich lives



K is a philosophy; it is a belief; our belief in Karma.

We strongly believe what goes around comes around, and therefore, conscious work ethics is our offering.

Our mission is to deliver better homes and better workspaces that profoundly enrich lives. We believe in doing everything a little better than what we did yesterday. We compete with no one but ourselves, setting our benchmarks and working towards redefining them every day. For us, creating residences, offices and showrooms isn't enough; we aim to build ecosystems that are responsive to the constantly evolving needs of modern human society. Designing and building mindfully crafted spaces is more than a promise for us; it is our most sacred oath, the foundation upon which K is built.

With the solid foundation, K stands tall on 4 pillars of core values that set us apart.

BETTER | **BETTER**
designs | *build quality*

BETTER | **BETTER**
experience | *transparency*

Welcome to K!



K
TOWN
KIWALE

LUXURY EMBEDDED
inside and outside

The innovative homes at K Town
let you explore better lifestyle features:

WORK FROM HOME
flexible use of space

DISCREET
car parking

SAFE AREAS
for play

A VARIETY OF ROOMS
WITHIN THE HOUSE
that optimize views

MASTER planning





*Artistic impression

A PERFECT BALANCE OF *privacy and openness*

Every home here also comes with a **private balcony** which gives its residents a chance to experience openness in the privacy of their home for relaxation as well as recreation.

In order to give you a taste of a **pollution-free life** and minimize its impact on your day-to-day living, we have planned the entire project around a **shared communal garden** which is sure to soothe your senses and leave you feeling fresh while giving you plenty of avenues to socialize and unwind.



SERENE AND REFRESHING
infinity pool



BEAUTIFULLY SUN-KISSED
badminton court and greenscapes



A RADIANT
amphitheatre



A WIDE RANGE OF
every sport you desire



SERENE ENVIRONS FOR
yoga area

AMENITIES



K-SOCIAL LIFESTYLE

- Club House 1
- Club House 2
- Multipurpose Hall
- Lounge
- Party Lawn
- Gazebo
- Deck Area
- Amphitheatre
- Garden Sitouts
- Children's Play Area/
Adventure Play Area
- Senior Citizen Park
- Multipurpose Court
- Music Room



K- ADDED LIFESTYLE

- Co-Working Spaces
- Crèche with Attached
Outdoor Play Zone
- WiFi in Common Areas
- Smart Security Systems
- Decorative Gate With
Security Cabin



K-ATHLETIC LIFESTYLE

- Badminton Court
- Half Basketball Court
- Tennis Court



K-HEALTHY LIFESTYLE

- Infinity Pool with
Baby Pool
- Spa
- Outdoor Yoga/
Meditation Area with
Water Body
- Health Bar with
Waiting Area
- Walker's Track
- Aerobics Area
- Indoor AC Gym
- Open Air Gym



K-SUSTAINABLE LIFESTYLE

- Sewage Treatment Plant
- Organic Waste
Composting Machine
- Generator Back Up For
Common Area & Lifts

SPECIFICATIONS

- Sand Finish External Plaster
- Gypsum Finish Internal Walls
- AAC Blocks Masonry
- Designer Vitrified Tiles in
Living Room,
Bedrooms & Kitchen
- Designer Tiles in Bathrooms
- Vitrified Flooring for Terrace
- Granite Platform with
Stainless Steel Sink
- Designer Dado Tiles in Kitchen
- Provision for Water Purifier
- CP & Sanitary Fittings of
Good Quality
- Solar Heated Water
in Bathroom
- Laminated Flush Door
- Granite Door Frame in Toilets
- UPVC Windows with
Mosquito Mesh
- Granite Window Sill
- Concealed Copper Wiring
- Electrical Switches of
Good Quality
- Television Point with
DTH Connection in
Living Room &
Master Bedroom
- AC Point in Living Room &
Master Bedroom
- Provision for Inverter Point
- Plastic Finish Paint in Interior
- Semi Acrylic Paint for
External Walls
- Video Door Phone (VDP)
- Provision for WiFi



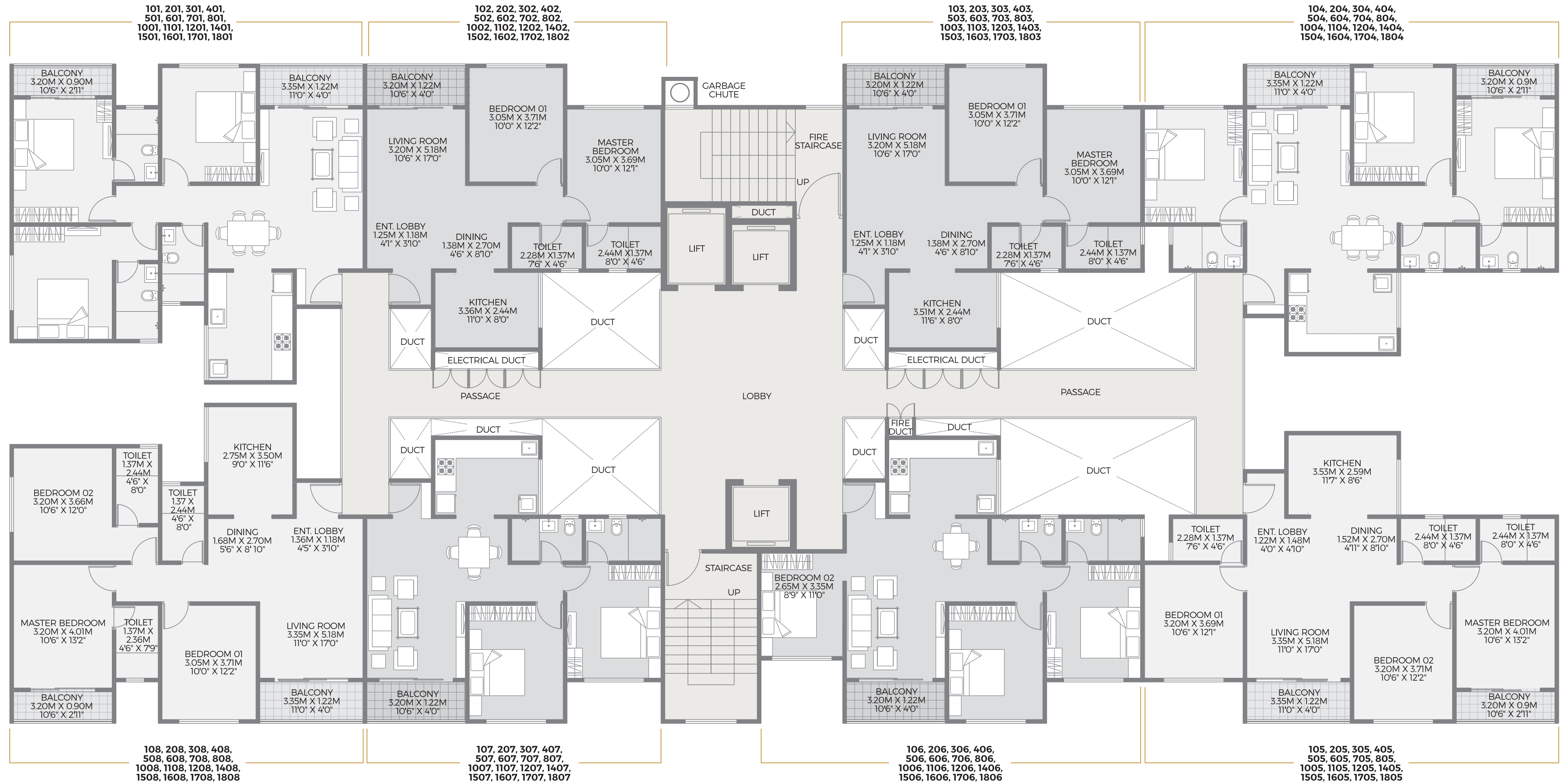
K
TOWN

K
TOWN



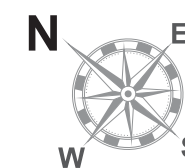
PROXIMITIES

- Express Highway - 2 Mins.
- Akurdi Railway Station - 5 Mins.
- S. B. Patil School - 5 Mins.
- K Shire - 9 Mins.
- Old Pune- Mumbai Highway - 10 Mins.
- Dange Chowk - 10 Mins.
- D Y Patil - 10 Mins.
- Hinjawadi IT Park - 10 Mins.
- MCA Stadium - 10 Mins.
- Aditya Birla Hospital - 15 Mins.



AREA STATEMENT

TYPE	FLAT NO	CARPET AREA		BALCONY AREA		TOTAL CARPET AREA	
		SQ MT	SQ FT	SQ MT	SQ FT	SQ MT	SQ FT
3 BHK	101, 201, 301, 401, 501, 601, 701, 801, 1001, 1101, 1201, 1401, 1501, 1601, 1701, 1801	89.21	960.26	6.96	74.92	96.17	1035
2 BHK	102, 202, 302, 402, 502, 602, 702, 802, 1002, 1102, 1202, 1402, 1502, 1602, 1702, 1802	64.50	694.28	3.90	41.98	68.40	736
2 BHK	103, 203, 303, 403, 503, 603, 703, 803, 1003, 1103, 1203, 1403, 1503, 1603, 1703, 1803	64.87	698.26	3.90	41.98	68.77	740
3 BHK	104, 204, 304, 404, 504, 604, 704, 804, 1004, 1104, 1204, 1404, 1504, 1604, 1704, 1804	85.83	923.87	6.96	74.92	92.79	999
3 BHK	105, 205, 305, 405, 505, 605, 705, 805, 1005, 1105, 1205, 1405, 1505, 1605, 1705, 1805	85.83	923.87	6.96	74.92	92.79	999
2.5 BHK	106, 206, 306, 406, 506, 606, 706, 806, 1006, 1106, 1206, 1406, 1506, 1606, 1706, 1806	74.18	798.47	3.90	41.98	78.08	840
2 BHK	107, 207, 307, 407, 507, 607, 707, 807, 1007, 1107, 1207, 1407, 1507, 1607, 1707, 1807	64.50	694.28	3.90	41.98	68.40	736
3 BHK	108, 208, 308, 408, 508, 608, 708, 808, 1008, 1108, 1208, 1408, 1508, 1608, 1708, 1808	89.21	960.26	6.96	74.92	96.17	1035



MAHARERA No.: P52100028608
<https://maharera.mahaonline.gov.in>

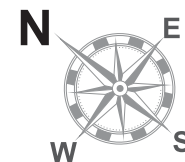


BUILDING A1
Typical Floor Plans



AREA STATEMENT

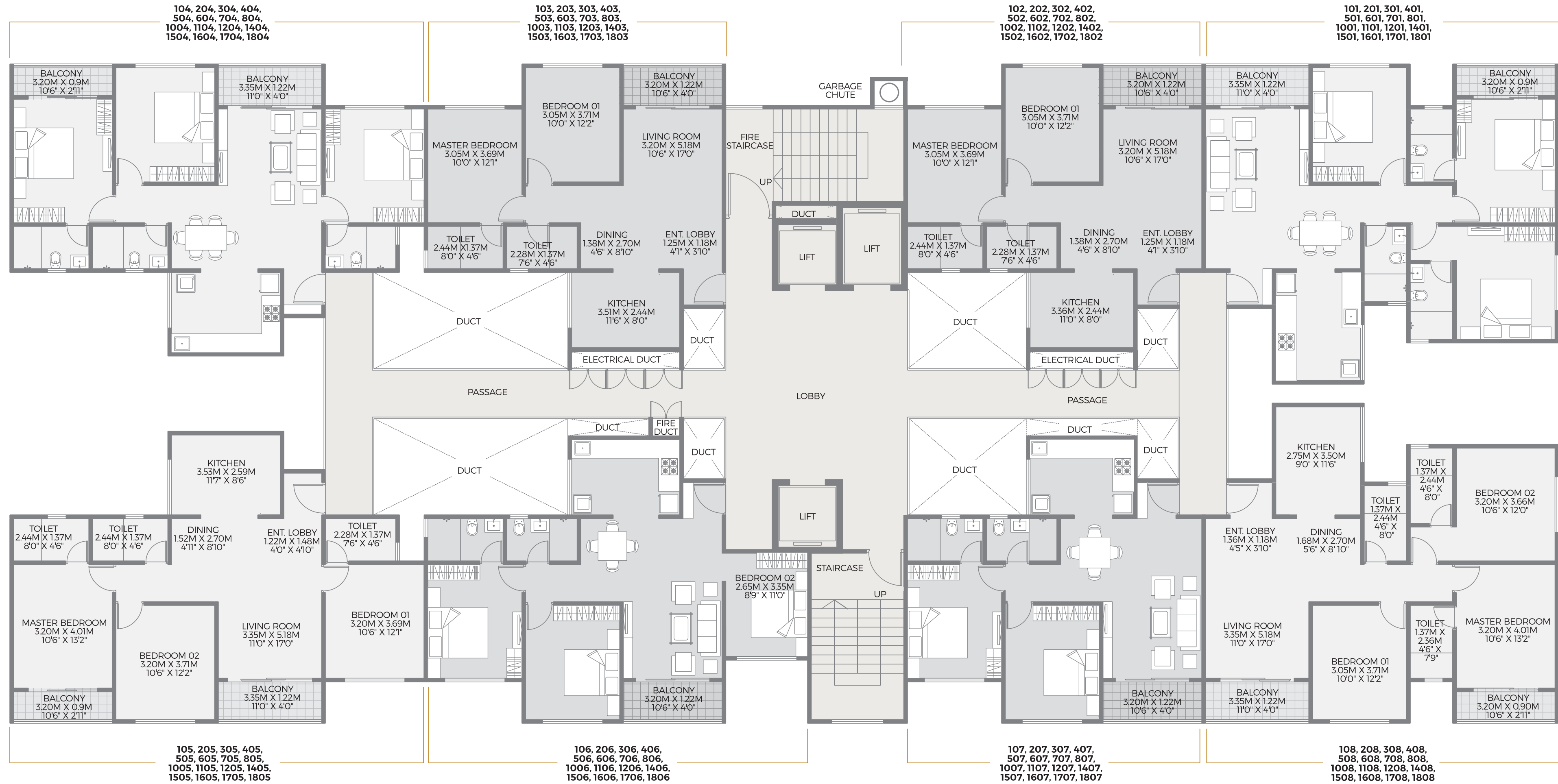
TYPE	FLAT NO	CARPET AREA		BALCONY AREA		TOTAL CARPET AREA	
		SQ MT	SQ FT	SQ MT	SQ FT	SQ MT	SQ FT
3 BHK	901, 1301	89.21	960.26	6.96	74.92	96.17	1035
2 BHK	902, 1302	64.50	694.28	3.90	41.98	68.40	736
2 BHK	903, 1303	64.87	698.26	3.90	41.98	68.77	740
3 BHK	904, 1304	85.83	923.87	6.96	74.92	92.79	999
3 BHK	905, 1305	85.83	923.87	6.96	74.92	92.79	999
2 BHK	906, 1306	64.87	698.26	3.90	41.98	68.77	740
2 BHK	907, 1307	64.50	694.28	3.90	41.98	68.40	736
3 BHK	908, 1308	89.21	960.26	6.96	74.92	96.17	1035



MAHARERA No.: P52100028608
<https://maharera.mahaonline.gov.in>

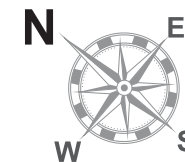


BUILDING A1
Refuge Floor Plans



AREA STATEMENT

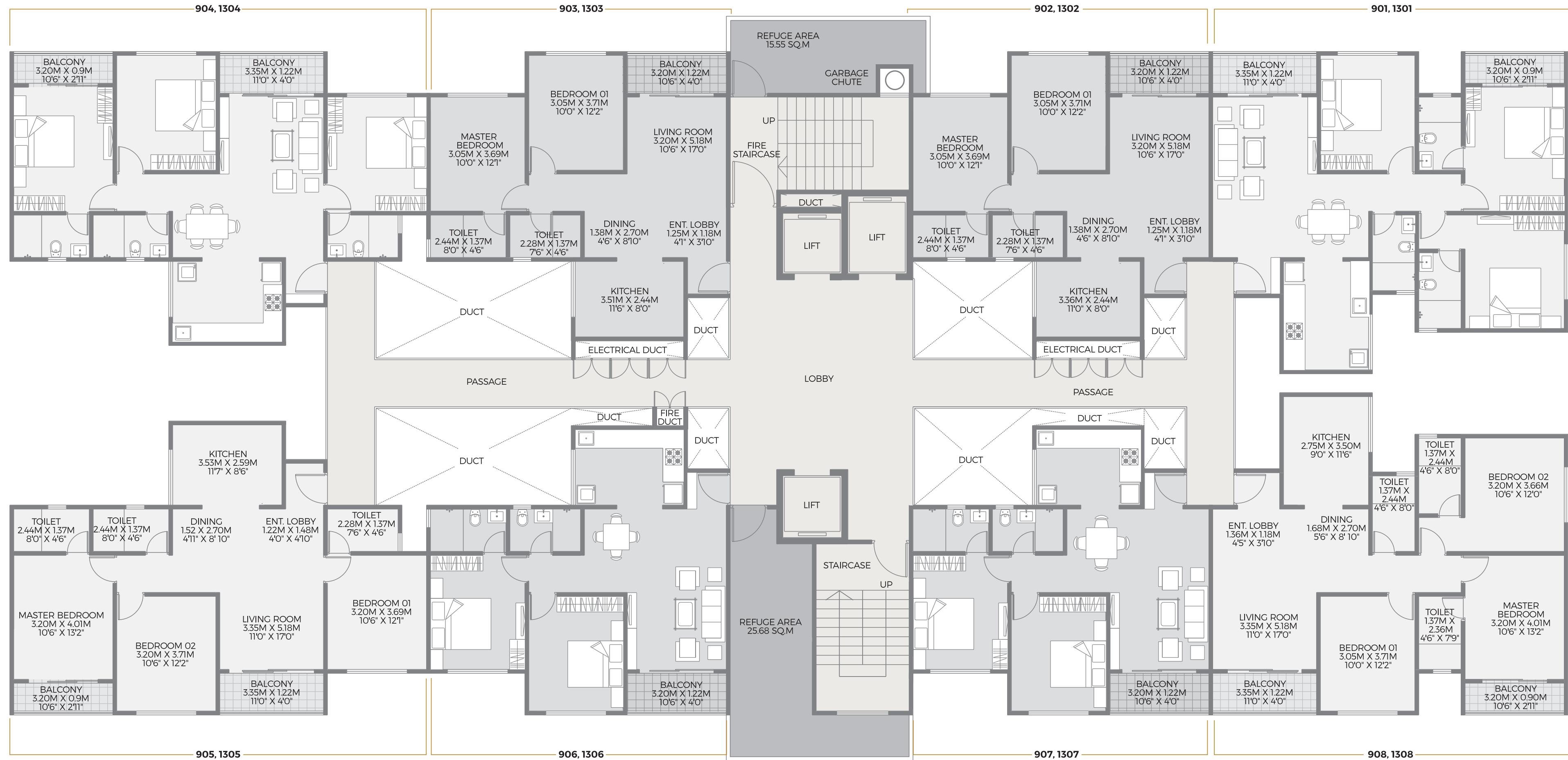
TYPE	FLAT NO	CARPET AREA		BALCONY AREA		TOTAL CARPET AREA	
		SQ MT	SQ FT	SQ MT	SQ FT	SQ MT	SQ FT
3 BHK	101, 201, 301, 401, 501, 601, 701, 801, 1001, 1101, 1201, 1401, 1501, 1601, 1701, 1801	89.21	960.26	6.96	74.92	96.17	1035
2 BHK	102, 202, 302, 402, 502, 602, 702, 802, 1002, 1102, 1202, 1402, 1502, 1602, 1702, 1802	64.50	694.28	3.90	41.98	68.40	736
2 BHK	103, 203, 303, 403, 503, 603, 703, 803, 1003, 1103, 1203, 1403, 1503, 1603, 1703, 1803	64.87	698.26	3.90	41.98	68.77	740
3 BHK	104, 204, 304, 404, 504, 604, 704, 804, 1004, 1104, 1204, 1404, 1504, 1604, 1704, 1804	85.83	923.87	6.96	74.92	92.79	999
3 BHK	105, 205, 305, 405, 505, 605, 705, 805, 1005, 1105, 1205, 1405, 1505, 1605, 1705, 1805	85.83	923.87	6.96	74.92	92.79	999
2.5 BHK	106, 206, 306, 406, 506, 606, 706, 806, 1006, 1106, 1206, 1406, 1506, 1606, 1706, 1806	74.18	798.47	3.90	41.98	78.08	840
2 BHK	107, 207, 307, 407, 507, 607, 707, 807, 1007, 1107, 1207, 1407, 1507, 1607, 1707, 1807	64.50	694.28	3.90	41.98	68.40	736
3 BHK	108, 208, 308, 408, 508, 608, 708, 808, 1008, 1108, 1208, 1408, 1508, 1608, 1708, 1808	89.21	960.26	6.96	74.92	96.17	1035



MAHARERA No.: P52100028608
<https://maharera.mahaonline.gov.in>

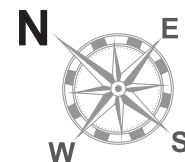


BUILDING A 2
Typical Floor Plans



AREA STATEMENT

TYPE	FLAT NO	CARPET AREA		BALCONY AREA		TOTAL CARPET AREA	
		SQ MT	SQ FT	SQ MT	SQ FT	SQ MT	SQ FT
3 BHK	901, 1301	89.21	960.26	6.96	74.92	96.17	1035
2 BHK	902, 1302	64.50	694.28	3.90	41.98	68.40	736
2 BHK	903, 1303	64.87	698.26	3.90	41.98	68.77	740
3 BHK	904, 1304	85.83	923.87	6.96	74.92	92.79	999
3 BHK	905, 1305	85.83	923.87	6.96	74.92	92.79	999
2 BHK	906, 1306	64.87	698.26	3.90	41.98	68.77	740
2 BHK	907, 1307	64.50	694.28	3.90	41.98	68.40	736
3 BHK	908, 1308	89.21	960.26	6.96	74.92	96.17	1035



MAHARERA No.: P52100028608
<https://maharera.mahaonline.gov.in>



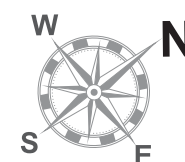
BUILDING A 2
Refuge Floor Plans



AREA STATEMENT

TYPE	FLAT NO	CARPET AREA		BALCONY AREA		TOTAL CARPET AREA	
		SQ MT	SQ FT	SQ MT	SQ FT	SQ MT	SQ FT
3 BHK	101, 201, 301, 401, 501, 601, 701, 801, 1001, 1101, 1201	89.74	966	6.97	75	96.71	1041
2 BHK	101, 202, 302, 402, 502, 602, 702, 802, 1002, 1102, 1202	65.92	710	3.90	42	69.82	752
2.5 BHK	103, 203, 303, 403, 503, 603, 703, 803, 1003, 1103, 1203	74.10	798	3.90	42	78.00	840
2 BHK	104, 204, 304, 404, 504, 604, 704, 804, 1004, 1104, 1204	65.92	710	3.90	42	69.82	752
2 BHK	105, 205, 305, 405, 505, 605, 705, 805, 1005, 1105, 1205	65.92	710	3.90	42	69.82	752
2.5 BHK	106, 206, 306, 406, 506, 606, 706, 806, 1006, 1106, 1206	74.10	798	3.90	42	78.00	840
2 BHK	107, 207, 307, 407, 507, 607, 707, 807, 1007, 1107, 1207	65.92	710	3.90	42	69.82	752
3 BHK	108, 208, 308, 408, 508, 608, 708, 808, 1008, 1108, 1208	89.74	966	6.97	75	96.71	1041

NOTE : BUILDING PROPOSED FOR 18 FLOORS



MAHARERA No.: P52100032956
<https://maharera.mahaonline.gov.in>



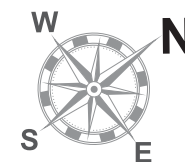
BUILDING A 3
Typical Floor Plans



AREA STATEMENT

TYPE	FLAT NO	CARPET AREA		BALCONY AREA		TOTAL CARPET AREA	
		SQ MT	SQ FT	SQ MT	SQ FT	SQ MT	SQ FT
3 BHK	901, 1301	89.74	966	6.97	75	96.71	1041
2 BHK	902, 1302	65.92	710	3.90	42	69.82	752
2 BHK	903, 1303	64.79	697	3.90	42	68.69	739
2 BHK	904, 1304	65.92	710	3.90	42	69.82	752
2 BHK	905, 1305	65.92	710	3.90	42	69.82	752
2 BHK	906, 1306	64.79	697	3.90	42	68.69	739
2 BHK	907, 1307	65.92	710	3.90	42	69.82	752
3 BHK	908, 1308	89.74	966	6.97	75	96.71	1041

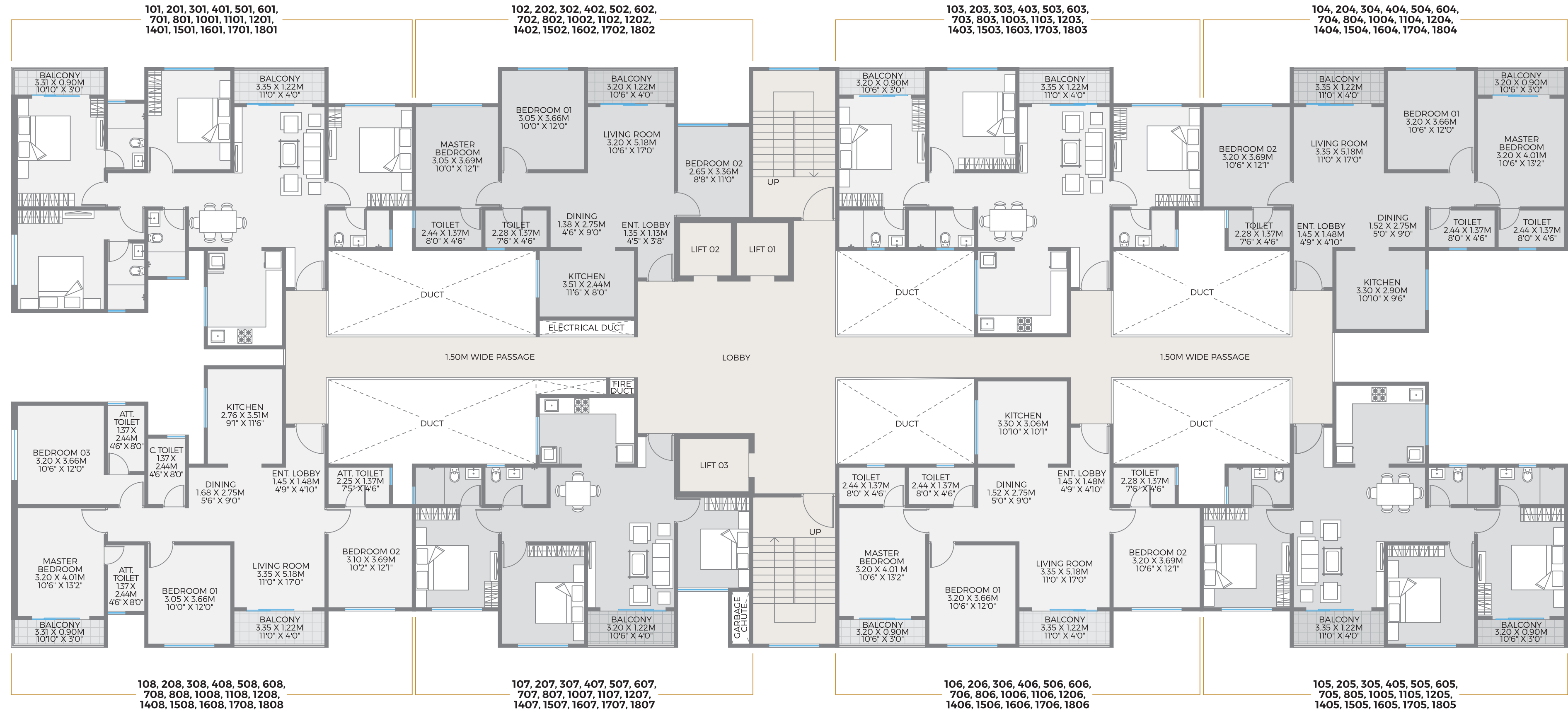
NOTE : BUILDING PROPOSED FOR 18 FLOORS



MAHARERA No.: P52100032956
<https://maharera.mahaonline.gov.in>



BUILDING A 3
Refuge Floor Plans



AREA STATEMENT

TYPE	FLAT NO	CARPET AREA		BALCONY AREA		TOTAL CARPET AREA	
		SQ MT	SQ FT	SQ MT	SQ FT	SQ MT	SQ FT
4 BHK	101, 201, 301, 401, 501, 601, 701, 801, 1001, 1101, 1201, 1401, 1501, 1601, 1701, 1801	105.18	1132	6.97	75	112.15	1207
2.5 BHK	102, 202, 302, 402, 502, 602, 702, 802, 1002, 1102, 1202, 1402, 1502, 1602, 1702, 1802	74.10	798	3.90	42	78.00	840
3 BHK	103, 203, 303, 403, 503, 603, 703, 803, 1003, 1103, 1203, 1403, 1503, 1603, 1703, 1803	86.95	936	6.97	75	93.92	1011
3 BHK	104, 204, 304, 404, 504, 604, 704, 804, 1004, 1104, 1204, 1404, 1504, 1604, 1704, 1804	86.42	930	6.97	75	93.39	1005
3 BHK	105, 205, 305, 405, 505, 605, 705, 805, 1005, 1105, 1205, 1405, 1505, 1605, 1705, 1805	86.42	930	6.97	75	93.39	1005
3 BHK	106, 206, 306, 406, 506, 606, 706, 806, 1006, 1106, 1206, 1406, 1506, 1606, 1706, 1806	86.95	936	6.97	75	93.92	1011
2.5 BHK	107, 207, 307, 407, 507, 607, 707, 807, 1007, 1107, 1207, 1407, 1507, 1607, 1707, 1807	74.10	798	3.90	42	78.00	840
4 BHK	108, 208, 308, 408, 508, 608, 708, 808, 1008, 1108, 1208, 1408, 1508, 1608, 1708, 1808	105.18	1132	6.97	75	112.15	1207

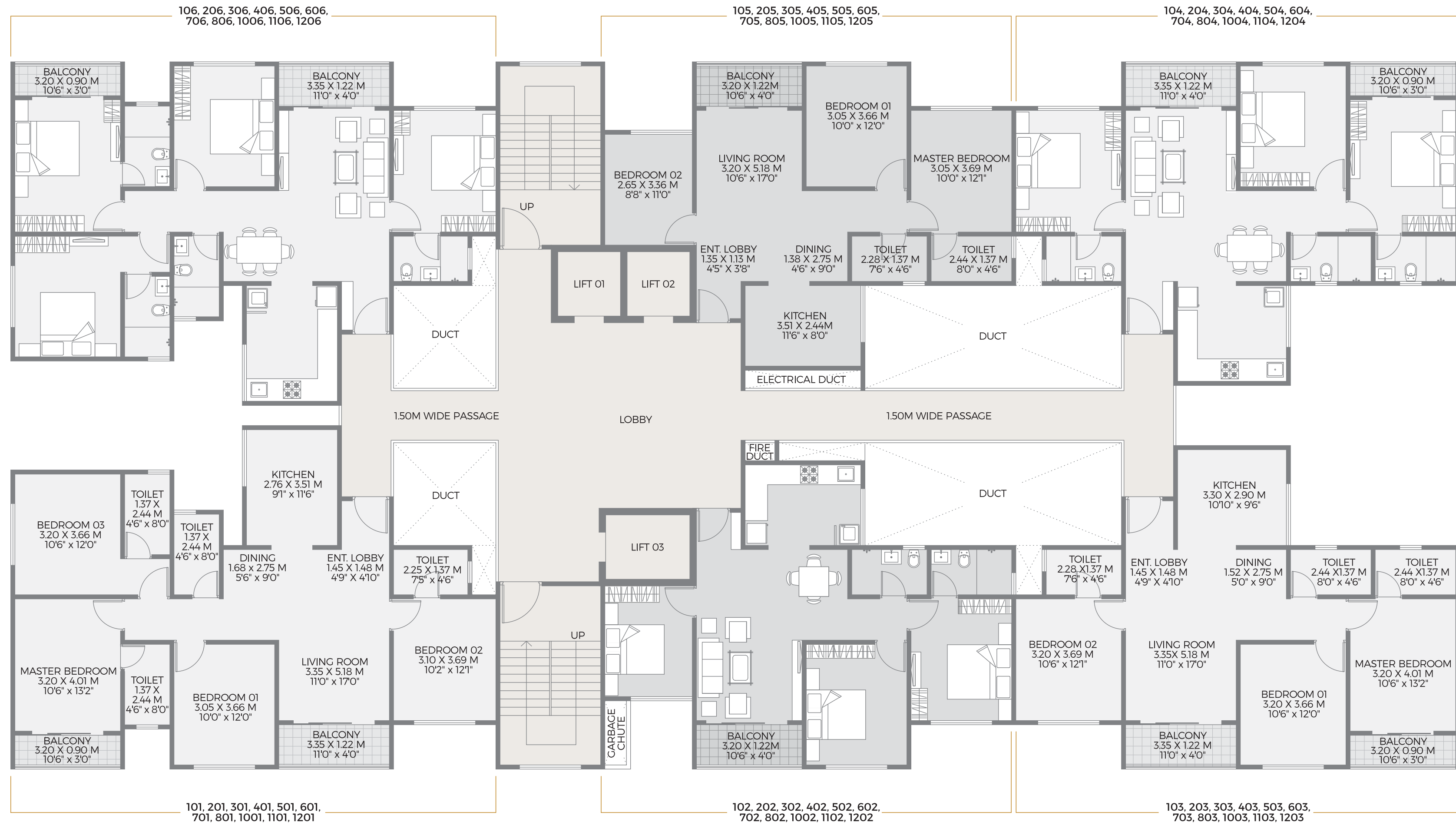




AREA STATEMENT

TYPE	FLAT NO	CARPET AREA		BALCONY AREA		TOTAL CARPET AREA	
		SQ MT	SQ FT	SQ MT	SQ FT	SQ MT	SQ FT
4 BHK	901, 1301	105.18	1132	6.97	75	112.15	1207
2 BHK	902, 1302	64.79	697	3.90	42	68.69	739
3 BHK	903, 1303	86.95	936	6.97	75	93.92	1011
3 BHK	904, 1304	86.42	930	6.97	75	93.39	1005
3 BHK	905, 1305	86.42	930	6.97	75	93.39	1005
3 BHK	906, 1306	86.95	936	6.97	75	93.92	1011
2 BHK	907, 1307	64.79	697	3.90	42	68.69	739
4 BHK	908, 1308	105.18	1132	6.97	75	112.15	1207

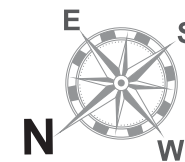




AREA STATEMENT

TYPE	FLAT NO	CARPET AREA		BALCONY AREA		TOTAL CARPET AREA	
		SQ MT	SQ FT	SQ MT	SQ FT	SQ MT	SQ FT
4 BHK	101, 201, 301, 401, 501, 601, 701, 801, 1001, 1101, 1201	105.18	1132	6.97	75	112.15	1207
2.5 BHK	101, 202, 302, 402, 502, 602, 702, 802, 1002, 1102, 1202	74.10	798	3.90	42	78.00	840
3 BHK	103, 203, 303, 403, 503, 603, 703, 803, 1003, 1103, 1203	86.42	930	6.97	75	93.39	1005
3 BHK	104, 204, 304, 404, 504, 604, 704, 804, 1004, 1104, 1204	86.42	930	6.97	75	93.39	1005
2.5 BHK	105, 205, 305, 405, 505, 605, 705, 805, 1005, 1105, 1205	74.10	798	3.90	42	78.00	840
4 BHK	106, 206, 306, 406, 506, 606, 706, 806, 1006, 1106, 1206	105.18	1132	6.97	75	112.15	1207

NOTE : BUILDING PROPOSED FOR 18 FLOORS



MAHARERA No.: P52100032956
<https://maharera.mahaonline.gov.in>



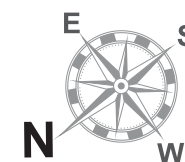
BUILDING C 1
Typical Floor Plans



AREA STATEMENT

TYPE	FLAT NO	CARPET AREA		BALCONY AREA		TOTAL CARPET AREA	
		SQ MT	SQ FT	SQ MT	SQ FT	SQ MT	SQ FT
4 BHK	901, 1301	105.18	1132	6.97	75	112.15	1207
2 BHK	902, 1302	64.79	697	3.90	42	68.69	739
3 BHK	903, 1303	86.42	930	6.97	75	93.39	1005
3 BHK	904, 1304	86.42	930	6.97	75	93.39	1005
2.5 BHK	905, 1305	74.10	798	3.90	42	78.00	840
4 BHK	906, 1306	105.18	1132	6.97	75	112.15	1207

NOTE : BUILDING PROPOSED FOR 18 FLOORS



MAHARERA No.: P52100032956
<https://maharera.mahaonline.gov.in>

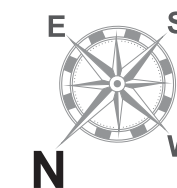


BUILDING C1
Refuge Floor Plans



AREA STATEMENT

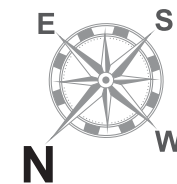
TYPE	FLAT NO	CARPET AREA		BALCONY AREA		TOTAL CARPET AREA	
		SQ MT	SQ FT	SQ MT	SQ FT	SQ MT	SQ FT
3 BHK	101, 201, 301, 401, 501, 601, 701, 801, 1001, 1101, 1201, 1401, 1501, 1601, 1701, 1801	89.74	966	6.97	75	96.71	1041
2 BHK	102, 202, 302, 402, 502, 602, 702, 802, 1002, 1102, 1202, 1402, 1502, 1602, 1702, 1802	65.92	710	3.90	42	69.82	752
2.5 BHK	103, 203, 303, 403, 503, 603, 703, 803, 1003, 1103, 1203, 1403, 1503, 1603, 1703, 1803	74.10	798	3.90	42	78.00	840
2 BHK	104, 204, 304, 404, 504, 604, 704, 804, 1004, 1104, 1204, 1404, 1504, 1604, 1704, 1804	65.92	710	3.90	42	69.82	752
2 BHK	105, 205, 305, 405, 505, 605, 705, 805, 1005, 1105, 1205, 1405, 1505, 1605, 1705, 1805	65.92	710	3.90	42	69.82	752
2.5 BHK	106, 206, 306, 406, 506, 606, 706, 806, 1006, 1106, 1206, 1406, 1506, 1606, 1706, 1806	74.10	798	3.90	42	78.00	840
2 BHK	107, 207, 307, 407, 507, 607, 707, 807, 1007, 1107, 1207, 1407, 1507, 1607, 1707, 1807	65.92	710	3.90	42	69.82	752
3 BHK	108, 208, 308, 408, 508, 608, 708, 808, 1008, 1108, 1208, 1408, 1508, 1608, 1708, 1808	89.74	966	6.97	75	96.71	1041





AREA STATEMENT

TYPE	FLAT NO	CARPET AREA		BALCONY AREA		TOTAL CARPET AREA	
		SQ. MT	SQ. FT	SQ. MT	SQ. FT	SQ. MT	SQ. FT
3 BHK	901, 1301	89.74	966	6.97	75	96.71	1041
2 BHK	902, 1302	65.92	710	3.90	42	69.82	752
2 BHK	903, 1303	64.79	697	3.90	42	68.69	739
2 BHK	904, 1304	65.92	710	3.90	42	69.82	752
2 BHK	905, 1305	65.92	710	3.90	42	69.82	752
2 BHK	906, 1306	64.79	697	3.90	42	68.69	739
2 BHK	907, 1307	65.92	710	3.90	42	69.82	752
3 BHK	908, 1308	89.74	966	6.97	75	96.71	1041





BY UNIQUE SPACES

UNIQUE SPACES

Founded by Sumit Tayal, Unique Spaces is emerging as the foremost name in the Real Estate landscape in Pune. Having delivered more than 1000+ residential apartments and commercial spaces, Unique Spaces is a known name in the Real Estate segment. With a strong foundation to deliver the best of quality and reliability backed by realistic commitments to their customers and implementation of best company practices, The seasoned team at Unique Spaces has strived to create and maintain the best work environment to offer you a superlative experience. Unique Spaces teams with the best architects and consultants to deliver a product that not only meets expectations but also surpasses them! Unique Spaces builds homes that create safety and harmony with unique lifestyles and spaces.

COMPLETED PROJECTS

- **UNIQUE ZEST COUNTY**, Lohegaon
- **AEROPOLIS**, Lohegaon
- **UNIQUE PROSPERO**, Lohegaon
- **NIRMITI**, Lohegaon
- **ABHILASHA**, Lohegaon
- **SWAROOP ENCLAVE**, Parvati
- **PALLETE**, Ravet
- **UNIQUE LIFESTYLE**, Wagholi

K-City

The project of 2 & 3 BHK Lifestyle homes lets you enjoy a premium lifestyle along with seamless connectivity.

Location: Keshav Nagar, Pune

Possession: 2024 onwards



K-Ville

The project brings together the ideal mix of lifestyle, connectivity, luxury and openness in one place to give you the taste of a fulfilling life.

Location: Kiwale, PCMC

Possession: 2024 onwards



K-Shire

The project brings together the ideal mix of lifestyle, connectivity, luxury, and openness with luxurious 2, 2.5 & 3 BHK homes. All in a way to give you the taste of a fulfilling life.

Location: Punawale, Pune

Possession: 2025 onwards



K-Pune

The project is a reflection of true luxury. Elegant 2, 3 & 4 BHK homes surrounded by landscape that enhance the overall vibe, here is a lifestyle crafted for better living.

Location: Bavdhan, Pune

Possession: 2027 onwards





CREDITS

DESIGNING ARCHITECT
SPACE CRAFT ASSOCIATES

LIASONING ARCHITECT
SOLESPACE ARCHITECTS

MEP CONSULTANT
SKYLINE CONSULTANTS

RCC CONSULTANT
SUBHASH TAYAL

LEGAL ADVISOR
ADV. SANJAY AGARWAL

3D & MEDIA CONSULTANT
SQUARE ONE

SITE ADDRESS

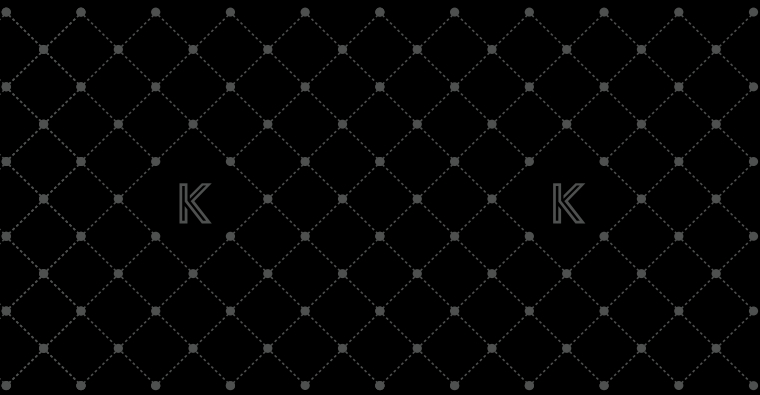
Sr. No. 39, Near Mukai Chowk, Kiwale, Pune - 412101

CORPORATE ADDRESS

7th Floor, City Square, Behind The Pride Hotel, Shivaji Nagar, Pune, Maharashtra 411005

9145 66 4422, 84326 64400 | www.theuniquespaces.com | sales@theuniquespaces.com

MAHARERA No. P52100028608, P52100032956, P52100049129



BETTER HOMES

