

CLOSE TO GANDHINAGAR
CLOSER TO THE AIRPORT
CLOSEST TO YOUR LIFESTYLE EXPECTATIONS

WELCOME TO

READY
TO MOVE IN
LIFESTYLE



HAVEN
WELCOME HOME



Every aspect of Gala Haven will have you in awe.

This residential complex is immaculately planned and offers 576 beautiful homes - 432 units of 2 BHKs (1300 sq ft), 48 units of 2 BHKs (1420 sq ft) and 96 units of 3 BHKs (1850 sq ft).

Loaded with state-of-the-art amenities, these towers gracefully rise to 12 levels.

Master architect Apurva Amin has well worked his magic and thoughtfully utilised the space inside and outside the homes.

Beautiful landscapes are designed by one of India's most celebrated landscape architects, Aniket Bhagwat.

Parking space for 1.5 cars per flat at peripheral, hollow plinth and basement.



Actual image of the sample flat



Actual Photograph

Gala Haven, features apartments around a mesmerising 2 acre Courtyard.

Concieved by architect Aniket Bhagwat, the Courtyard takes an innovative approach to create a great social space for the residents. It engages you and interacts with you. It creates an environment that's almost surreal, prompting you to explore life in a different light altogether.

Petal fountain • Art installations • Cave garden • Sitting areas • Plaza with leaf trellis • Water garden
Amphitheatre • Indoor games • Cricket pitch • Volleyball court • Gym • Multipurpose court • Community hall
Children's play area • Toddlers' play area • Landscaped pathway • Pebble court • Water play



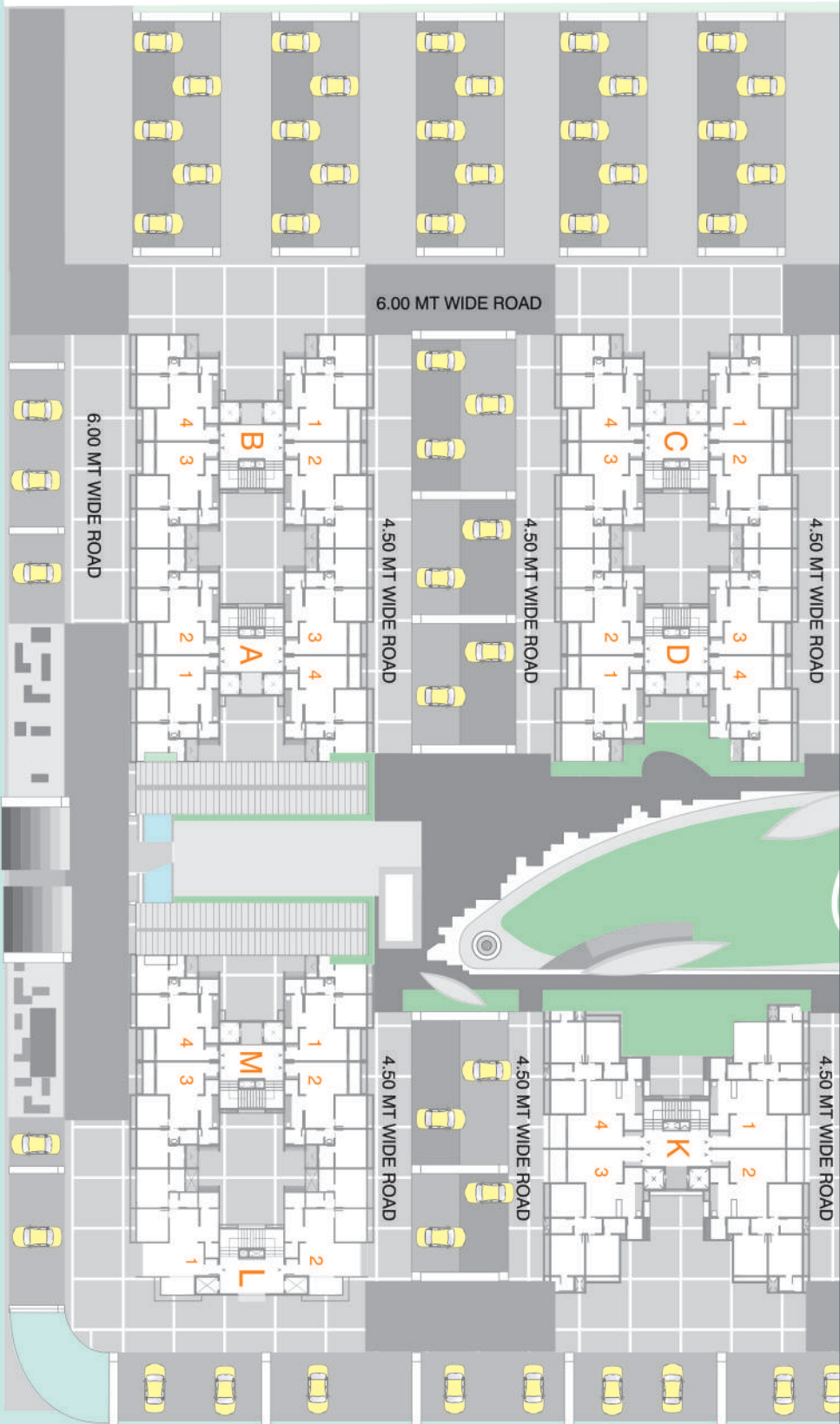
Actual Photograph



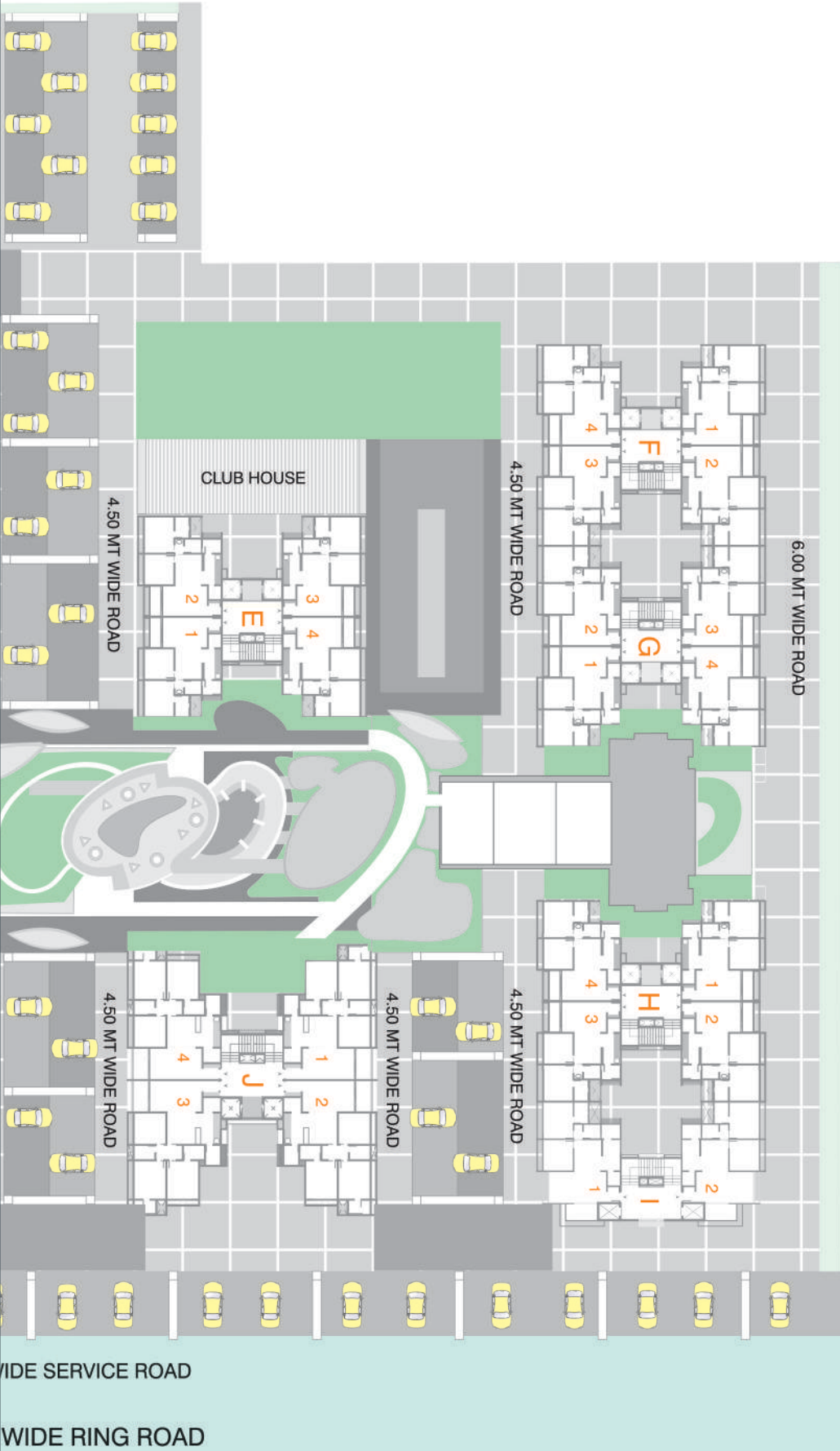
The area of Vaishnodevi Temple is one of the most developed areas of Ahmedabad. It is not only close to the airport, but falls in proximity to several key places like the Nirma University, Adani's Township, Godrej Township and Gandhinagar. Located in this superb location is Gala Haven, our wonderful residential project offering ready to move in 2 BHK and 3 BHK apartments.



Actual Photograph

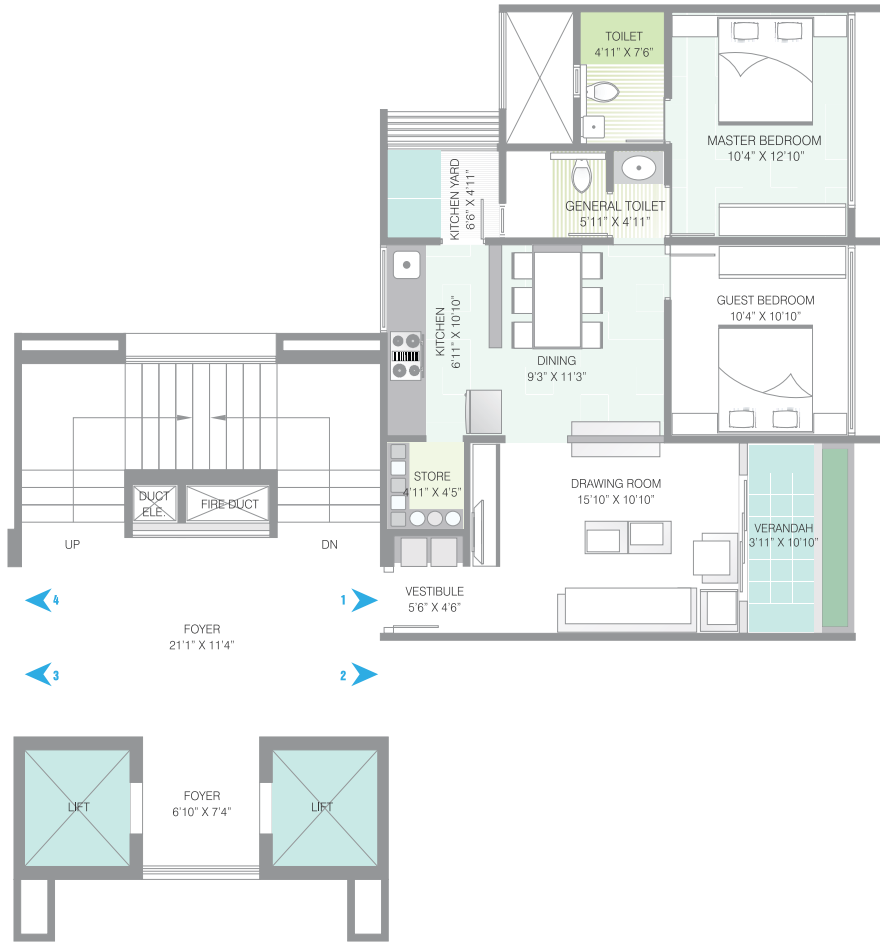


9.00 MT W
60.00 MT



SITE PLAN

- 2 BHK - 1300 sq ft (A,B,C,D,E,F,G,H & M)
- 2 BHK - 1420 sq ft (I & L)
- 3 BHK - 1850 sq ft (J & K)



UNIT PLAN
2 BHK (1300 sq ft)



UNIT PLAN
2 BHK (1420 sq ft)



UNIT PLAN
3 BHK (1850 sq ft)

ECIFICATIONS

O.	PARTICULARS	2 AND 3 BHK APARTMENT
1.	Drawing room	Vitrified tiles flooring (2 BHK - 600mm X 600mm) (3 BHK - 800mm X 800mm)
2.	Living and dining	Vitrified tiles flooring (2 BHK - 600mm X 600mm) (3 BHK - 800mm X 800mm)
3.	Entrance foyer & passage	Vitrified tiles flooring (2 BHK - 600mm X 600mm) (3 BHK - 800mm X 800mm)
4.	Puja room	Vitrified tiles flooring (600mm X 600mm)
5.	Master bedroom	Vitrified flooring (600mm X 600mm)
6.	Bedrooms	Vitrified flooring (600mm X 600mm)
7.	Kitchen	Vitrified flooring (2 BHK - 600mm X 600mm) (3 BHK - 800mm X 800mm) Granite platform with quartz sink and ceramic tiles dado up to lintel level
8.	Kitchen yard	Kota stone flooring with 3' high tiles dado
9.	Main door	Wooden frame with polished veneer finish door
0.	Others	Wooden frame with painted flush door
.	Windows	Aluminum windows with high performance glass (reflective glass/ heat controlled glass)
2.	Toilets	Floor and dado by ceramic tiles up to lintel level C. P. fittings (conforming to green building norms)
3.	Electrification	2 BHK - Single phase - 3KW copper wiring with modular switches 3 BHK - Three phase - 6.25KW copper wiring with modular switches
4.	Colour	Internal - putty finish, External - apex / texture
5.	Roof Insulation	Over deck insulation with inverted terracotta pots for reduced heat gains

This beautiful residential project is brought to you by Gala Group, one of the most trusted names in realty. At Gala Group, we work towards perfection. Even before the first brick is laid, our team studies the land, conducts valuation and explores various offerings which you as a home buyer would appreciate. Moreover, all key minds working with us are thoroughbred professionals and well-established names in their respective fields.

Do get in touch with us for details.
It's always a pleasure to be at your service.



GALA HAVEN is a green building project registered under IGBC Green Homes rating system, opting for GOLD rating. The building follows all the local governing norms, NBC 2005 and Energy Conservation Building Code to achieve the idea of having an eco-friendly and efficient building. It will provide its residents a comfortable and healthy environment through efficient use of energy and well planned waste management.



- 

EFFICIENT WATER MANAGEMENT
- 

REFLECTIVE GLASSES
- 

DISABLED FRIENDLY
- 

GREY WATER RECYCLING
- 

THERMAL INSULATION



Gala Group

Gala HQ, A wing, 9th Floor, Safal Profitaire, Corporate Road, Opp Auda Garden, Prahalad Nagar, Ahmedabad - 380015. | Phone: + 91 79 30710000, 9978370000

Site Address:

Gala Haven, At Vaishnodevi Temple Circle, Off. S.G. Highway, 200 Ft. S. P. Ring Road, Ahmedabad - 382481
Phone: + 91 8141630000 | 8141680000 | Email: perfection@galainfra.com | www.galainfra.com

INSPIRED BY
PERFECTION

Now follow us on
www.facebook.com/GalaGroup.Perfection

The developer reserves the rights to change or revise or make any modifications, additions, omissions or alterations in the scheme as a whole or any part thereof or any details therein, at their sole discretion without any prior notice. Such changes would be binding to all the members. All the architectural and interior views in brochure are computer graphics simulated interpretation of the actual property. All the dimensions given herein are approximate and unfinished. This brochure is just for an easy presentation of the project and should not be treated as a legal document.