

THE ELEMENTS OF LIFE

 **PYRAMID**
ELEMENTS
DIGHE - AIROLI, NAVI MUMBAI





AN ABODE CREATED TO EXPERIENCE
A KEY ELEMENT OF LIFE -

LUXURY



AN ADMIRABLE LIFE.
AN INDULGENCE FOREVER.

TENDER PLOT

THE PODIUM OF LIFE

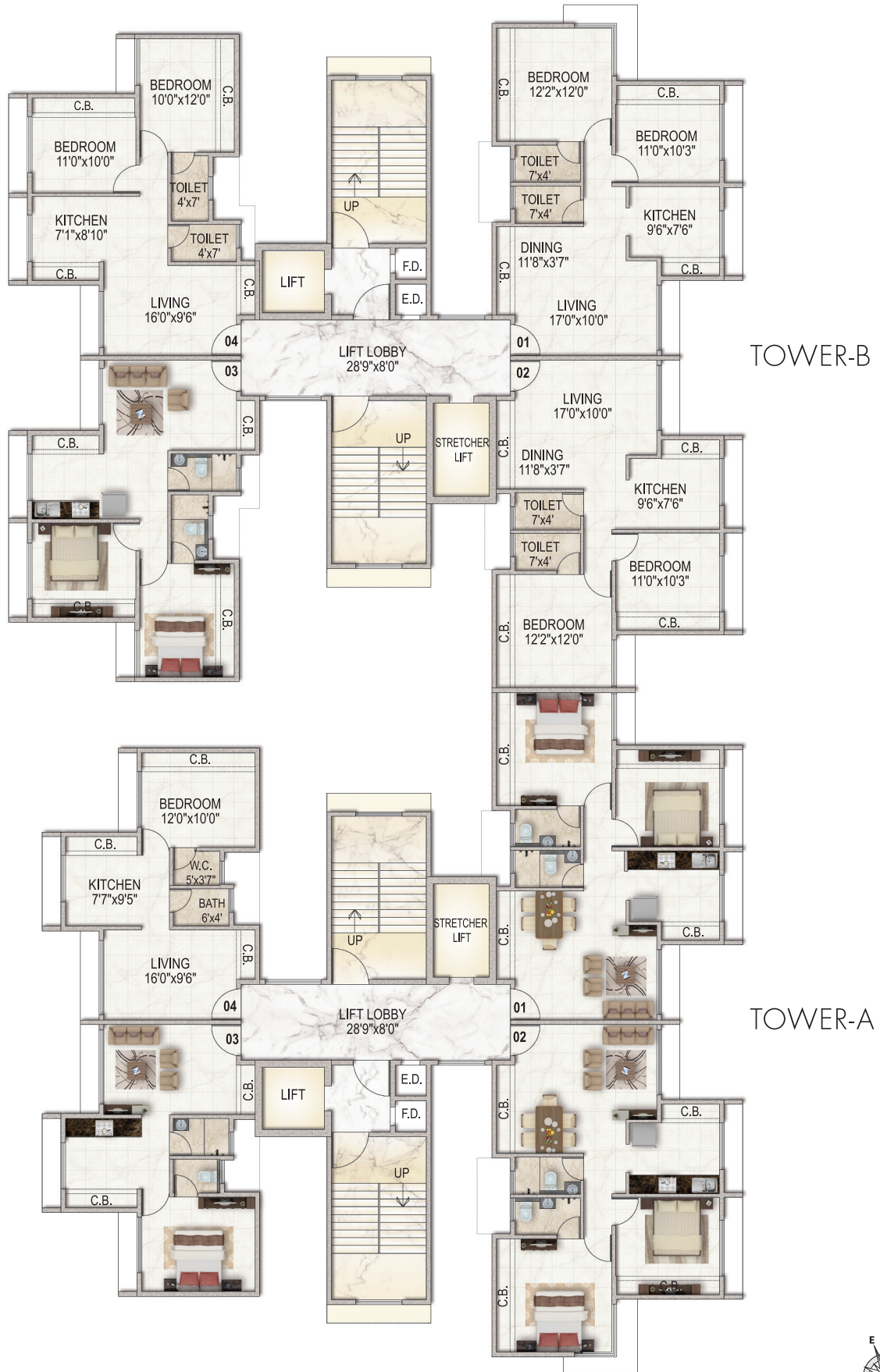
- 01 - JOGGING TRACK
- 02 - PEBBLED PATHWAY
- 03 - GYMNASIUM
- 04 - SOCIETY OFFICE
- 05 - MULTI-PURPOSE HALL
- 06 - OPEN AIR AMPHITHEATRE

- 07 - AEROBICS HALL
- 08 - WALKWAY
- 09 - MINI-LIBRARY
- 10 - SEATING AREA
- 11 - ENTRANCE / EXIT GATE
- 12 - OPEN CAR PARK

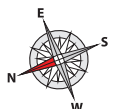
- 13 - PARTY LAWN
- 14 - HERBAL PLANTATION
- 15 - INDOOR GAMES ROOM
- 16 - KIDS PLAY AREA
- 17 - BARBEQUE AREA
- 18 - SENIOR CITIZENS' AREA

- 19 - POWER STATION
- 20 - OPEN DECK AREA
- 21 - KIDS POOL
- 22 - SWIMMING POOL
- 23 - MEDITATION AREA
- 24 - CHANGING ROOM

TYPICAL FLOOR PLAN



Disclaimer: All furniture and fixtures are for representation purpose only and not a part of standard flat offerings.





A HOME SHAPED TO OFFER
A VITAL ELEMENT OF LIFE -

PEACE

**A SPLENDID VIEW.
FOR THE SELECT FEW.**

- SCENIC VIEW OF PARSIK HILLS
- BLISSFUL VIEW OF THANE CREEK
- DESIGNER ENTRANCE LOBBY
- 24 X 7 SECURITY WITH CCTV SURVEILLANCE
- AMPLE CAR PARKING
- ROOF TOP PLAY COURT



A DWELLING INTENDED TO PROVIDE
AN ESSENTIAL ELEMENT OF LIFE -

COMFORT

**A REMARKABLE LIFESTYLE.
A LIFELONG COMMITMENT.**

FLOORING

- VITRIFIED FLOORING IN ALL ROOMS

KITCHEN

- GRANITE KITCHEN PLATFORM WITH BRANDED S.S. SINK
- WALL TILES UP TO 8 FT. HEIGHT

DOORS & WINDOWS

- WOODEN LAMINATED FLUSH DOORS IN EVERY ROOM
- POWDER COATED ALUMINIUM FRENCH WINDOWS WITH TINTED GLASS

WALLS & PAINTS

- POP FINISHED INTERNAL WALLS
- PREMIUM QUALITY PAINT ON INTERNAL WALLS
- ACRYLIC PAINT ON EXTERNAL WALLS

BATH & WC

- DESIGNER BATHROOM WITH BRANDED SANITARY WARE
- CONCEALED PLUMBING WITH C.P. FITTINGS
- GEYSER CONNECTION IN ALL BATHROOMS
- WALL TILES UP TO 8 FT. HEIGHT

ELECTRIFICATION

- CONCEALED COPPER WIRING WITH MCB/ELCB
- BRANDED ELECTRICAL FITTINGS
- TELEPHONE, T.V & INTERCOM POINTS





AN ADDRESS CHOSEN
TO GIVE YOU
A SIGNIFICANT
ELEMENT OF LIFE -

ENERGY

**A STRATEGIC
LOCATION.
MORE ENERGY
FOR LIFE.**

- PYRAMID GROUP PROJECTS
- IT PARKS
- EDUCATION
- LEISURE/SHOPPING
- SECURITY
- FIRE BRIGADE
- HOSPITAL
- GOVERNEMENT OFFICES
- CINEMA
- GROUND & GARDEN
- PETROL PUMP
- FOOD COURT
- RLY. STATION

- CLOSE PROXIMITY TO THANE-BELAPUR HIGHWAY
- NEAR PROPOSED DIGHE STATION
- MINDSPACE JUST 5 MINS. AWAY
- EASY ACCESS TO MUMBAI VIA AIROLI
- WELL CONNECTED TO MUMBAI - PUNE EXPRESSWAY



**PYRAMID
ELEMENTS**



Site & Office Address: **Pyramid Infratech Co.**

Plot no. X-21, Next to HP Petrol Pump, Thane Belapur Road, Dighe - Airoli, Navi Mumbai - 400708

Email: info@thepyrmidgroup.in | Call: 9619777878 / 9820247383 / 9152080604

MAHA RERA NO. P51700013897 | <http://maharera.mahaonline.gov.in>

Disclaimer: The images herein are only indicative and are for sake of illustration only. All specifications of the flat, amenities, services etc. proposed to be provided are specified in agreement for sale to be entered with Purchaser subject to tolerance etc. as provided therein. NOC/Permission will be obtained for Sale of Property, if required. You are required to verify all the details, including area, amenities, services, terms of sale and payments and other relevant terms independently with the Developer sales team only, by physically visiting the project site and the authorised website of RERA. You are requested not to visit any unauthorised website / broker (online / offline) to receive any information about any projects of the Developer and/or its sister concerns. Version 1 printed on Jan. 2018