



Pinnacle

ELANZA

EXCLUSIVE 2 BHK RESIDENCES

A Project by



PINNACLE[™]
ESTATES
Where Living Reaches Its Peak



Welcome to **Pinnacle Elanza**

A thoughtfully planned residential project by Pinnacle Estates, designed for families looking for comfort, convenience, and value.

With only 16 exclusive 2 BHK homes, this project focuses on smart layouts, essential amenities, and a peaceful neighbourhood - making everyday living easier and better.

Highlights:

- ▲ Easy access to main city roads**
- ▲ Close to schools, hospitals & daily essentials**
- ▲ Peaceful residential surroundings**

A location perfect for families and working professionals



Smart Homes Designed for Everyday Comfort

- ▲ 2 BHK Spacious Homes
- ▲ Efficient layouts with maximum space usage
- ▲ Natural light & ventilation
- ▲ Practical design for modern family living

Everyday Comforts That Matter



Allotted Parking



Lift Facility



CCTV Security
System



Solar Lights for
Common Areas



Inverter Points
in Flats



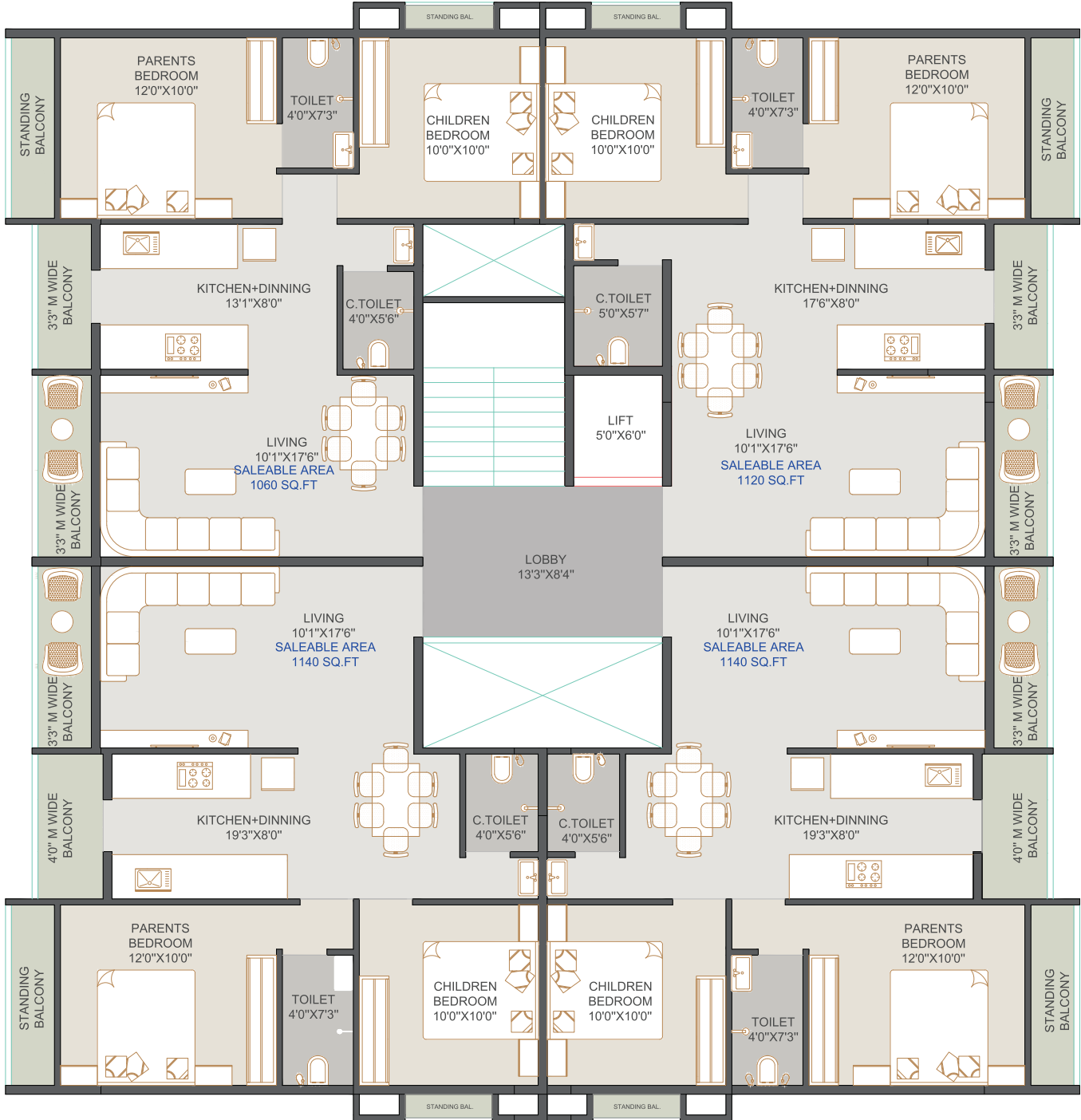
AC Point in
Master Bedroom



Wooden Flooring
in Balconies



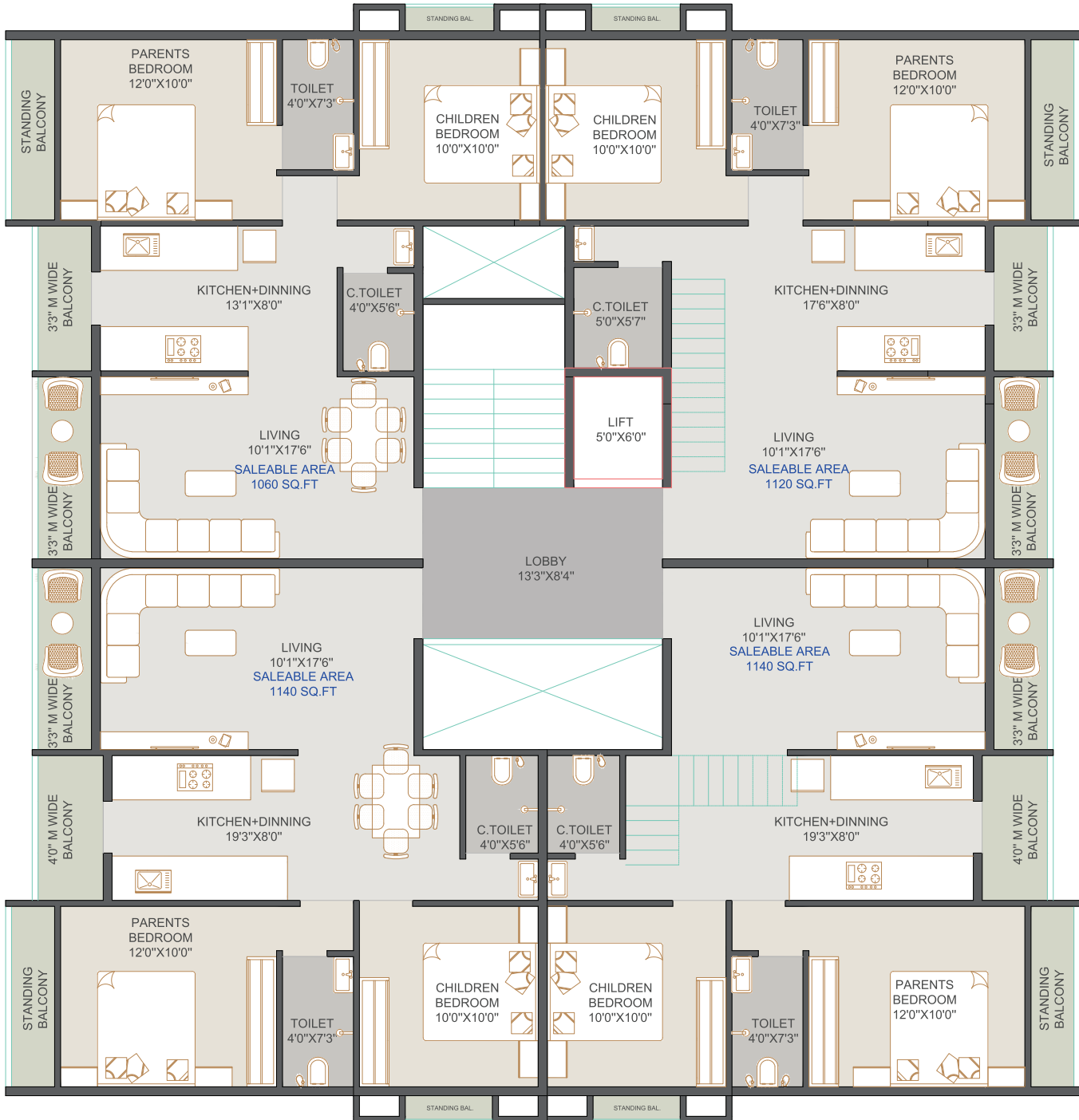
1st to 3rd Floor Plan



PROPOSED 9.00 MTR WIDE ROAD



4th Floor Plan



PROPOSED 9.00 MTR WIDE ROAD



Specifications

▲ STRUCTURE

Enhanced structured safety against earth quake.
RCC framed structure as per I.S. code.
Double coat sand face plaster for outer walls.

▲ COLOUR

Building finished with double coat water repellent premium quality paint of Asian or equivalent brand.

▲ WATER SUPPLY

Adequate underground & overhead water tank.
Water supply of municipal water and auxiliary source of water from borewell.

▲ ELEVATOR

Premium quality SS finished lift with auto door.

▲ STAIRCASE & TERRACE

Finished with natural granite or vitrified for treads & risers.

▲ SECURITY

24 x 7 high end security.
Foyer to each flat, lifts & security cabin.
CCTV camera coverage in campus, reception & parking area.

▲ PARKING

Dedicated parking for each apartment.

▲ FLOORING

600 x 1200 mm premium quality vitrified/PGVT tiles flooring for all rooms.
Rustic/antiskid tiles in balcony & washroom.

▲ DOORS & WINDOWS

All door frames of premium quality plywood with laminate.
Granite sill for windows & granite door frames for all toilets.

All windows of Hi-grade anodized coated aluminium sections / UPVC.

▲ KITCHEN

Carysil or equivalent kitchen sink.
Kitchen platform will be made of good, elegant sturdy granite / vitrified slab.
Dado with designer kitchen tiles up to lintel level.

▲ WALLS & CEILING

All internal walls are finished with POP / gypsum.
All internal walls with 2 coats of semi acrylic paint.

▲ WASH

Space for clothes drying area.
Electrical & plumbing points for washing machine.

▲ ELECTRIFICATION

Electrification by Polycab or equivalent make cables.
Legrand or equivalent switches with MCB.
Earth leakage protection will be provided.
Solar electricity for common lobby and staircase.
Provision for inverter in each apartment.
Provision for lightning arrester.

▲ SANITARY WARES & FITTINGS

All toilets are equipped with wall hung WC and uniquely designed basin of Jaguar or equivalent brand.
All toilets are equipped with flush valve, diverter with overhead shower & movable sink tap in kitchen.
All fittings CP finished Jaguar or equivalent brands.
Dedicated space for dry and wet areas.

▲ TOILET

Lintel level or 7 ft. dado with designer tiles.
Toilet and bath area will be designed, separating dry and wet areas.

A Project by



A POSSESSION READY LIFESTYLE AWAITS

BOOK YOUR NEW HOME TODAY



Address : Pinnacle Elanza, Wadala
Pathardi Rd, Indira Nagar, Nashik - 422009.

Contact:
+91 82377 97672 | +91 99793 63362



Scan for Location