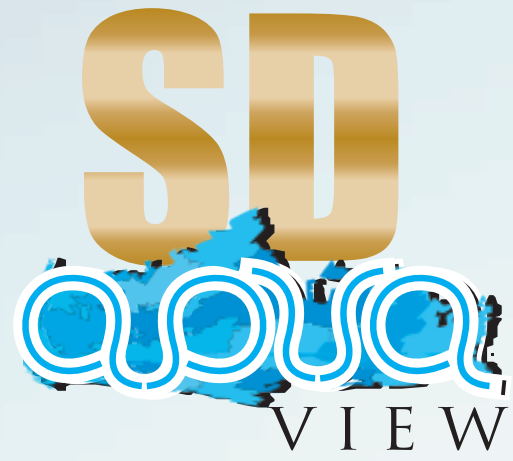


SD aqua VIEW

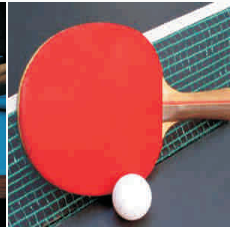


LIFE IN AN AQUATIC AMBIENCE



SD Aqua View, the best residential address along Jessore Road, offers you an upscale living amidst nature. Built around a big natural water body and surrounded by lush greenery and trees, SD Aqua View is an ideal place for peace and nature loving people. The attractive elevations of ten blocks are build with the best of materials and every aspect of your requirements has been covered in shaping up your home.

So come and make this 200+ families' community your extended family.



Unlimited Amenities & Facilities

- ~ AC Community Hall
- ~ AC Gymnasium
- ~ AC Indoor Games
- ~ AC Kids' Play Room
- ~ Boating Bonanza
- ~ Beautiful Temple
- ~ All around Beautiful Views including adjacent Airport
- ~ 24 hrs. Water Supply
- ~ 24 hrs Security with Intercom & CCTV
- ~ Ample Car Parking

Specifications



Building

Designed on a RCC Frame structure with suitable foundation depending on soil conditions

Exterior Elevation

To be designed by architect
Finished with suitable exterior paint finish

Interior Walls

Brick walls with a plaster of paris finish over a cement plaster

Doors

Wooden frames and flush doors of standard quality
Standard locks and fittings

Flooring

Vitrified tiles in internal common areas

Windows

Aluminium sliding windows with glass

Kitchen

Ceramic tiles flooring with green marble top
Ceramic tiles wall cladding up to 2 ft. over the green marble top
One stainless steel sink

Bathroom

Ceramic tiles flooring
Wall dado of ceramic tiles up to 6 ft. height
Good quality CP fittings and white sanitary ware

Electricals

Concealed insulated copper wiring with modular switches and MCBs
1 door bell point
2 light, 1 fan, 1 no. 5 amp plug points in bedrooms
1 AC point in master bedroom
2 light, 1 fan, 2 nos. 5 amp plug and 1 cable connection, 1 telephone points in living/dining
1 light, 1 exhaust fan, 1 no. 5 amp and 1 no. 15 amp plug points in kitchen
1 light, 1 exhaust fan and 1 no. 15 amp plug points in one toilet
1 light, 1 exhaust fan points in other toilet
1 light, 1 no. 5 amp plug points in verandah

Water Supply

Customary water supply from deep tube-well

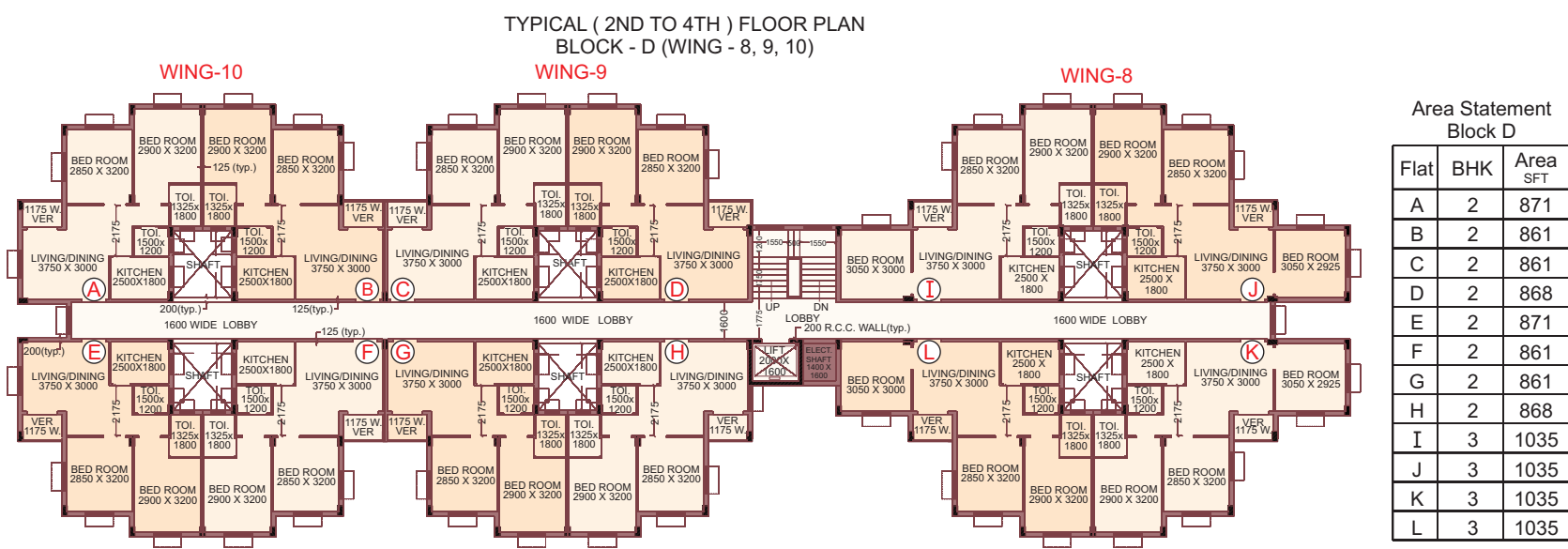
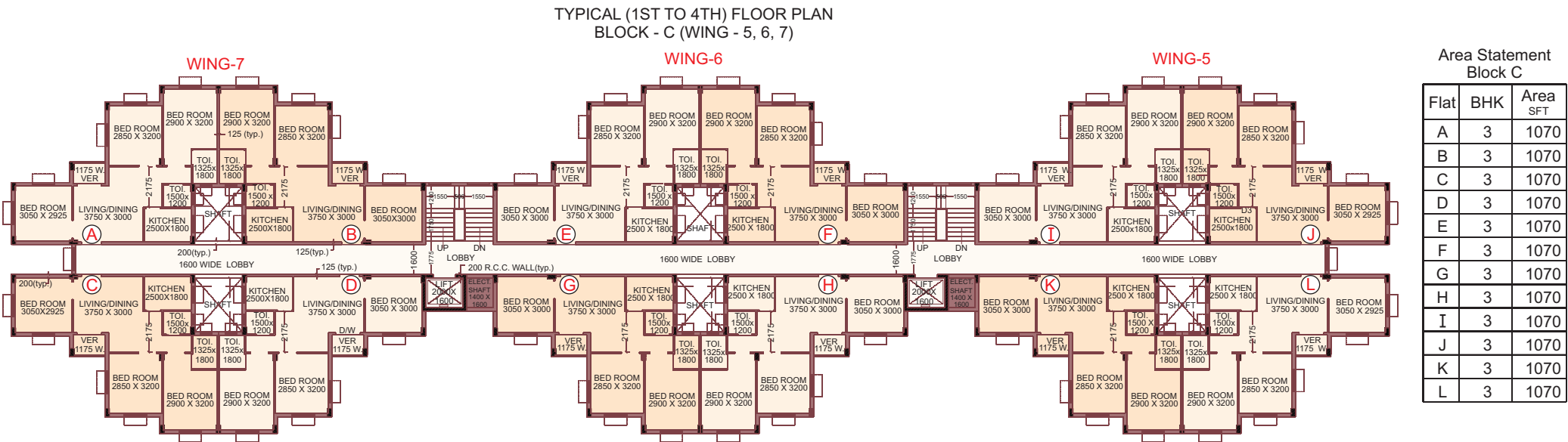
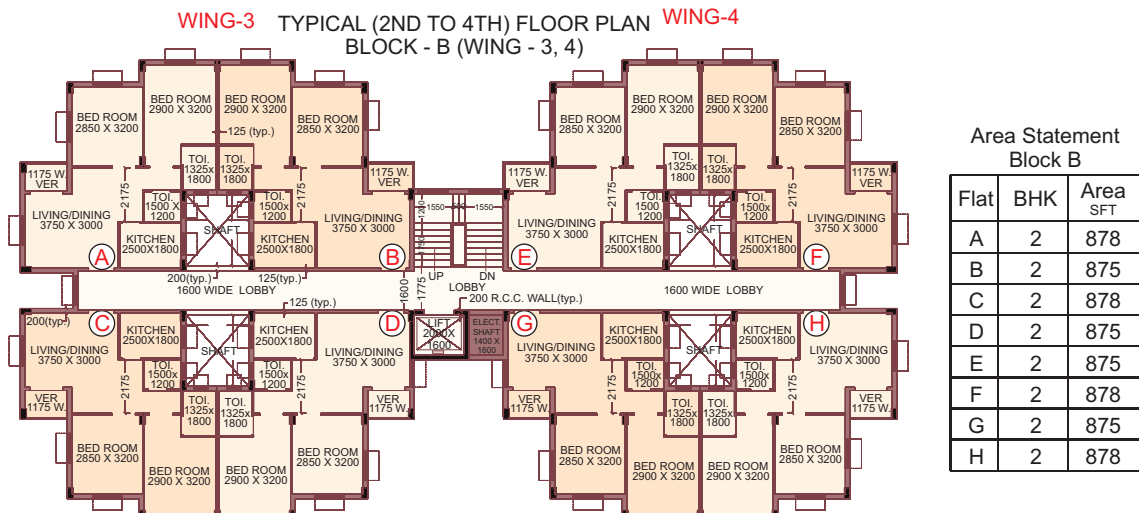
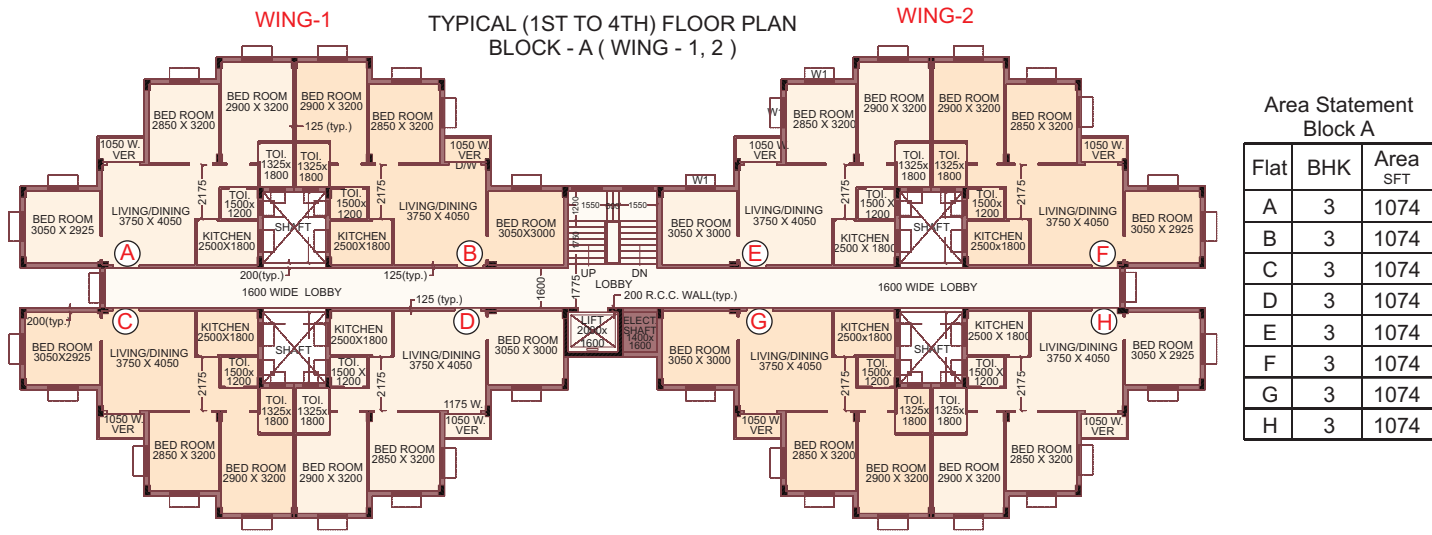
Generator

A suitable standby generator for all common lighting and water pump

Lift

5 passenger lift of reputed make

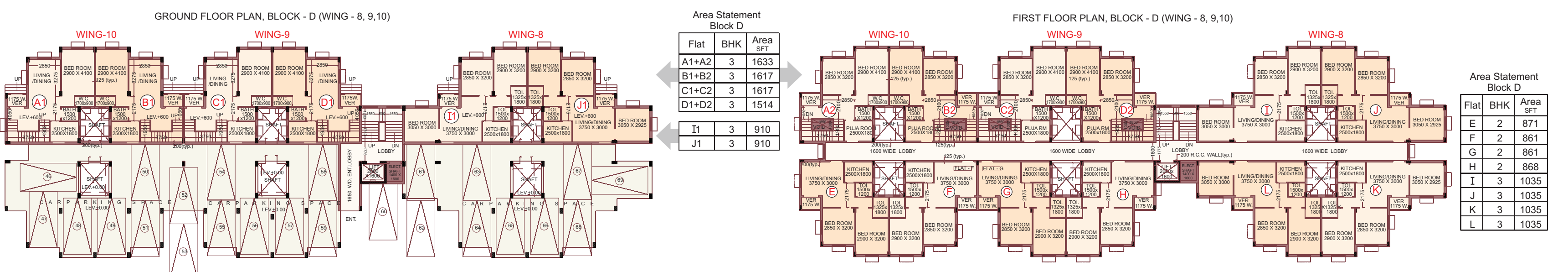
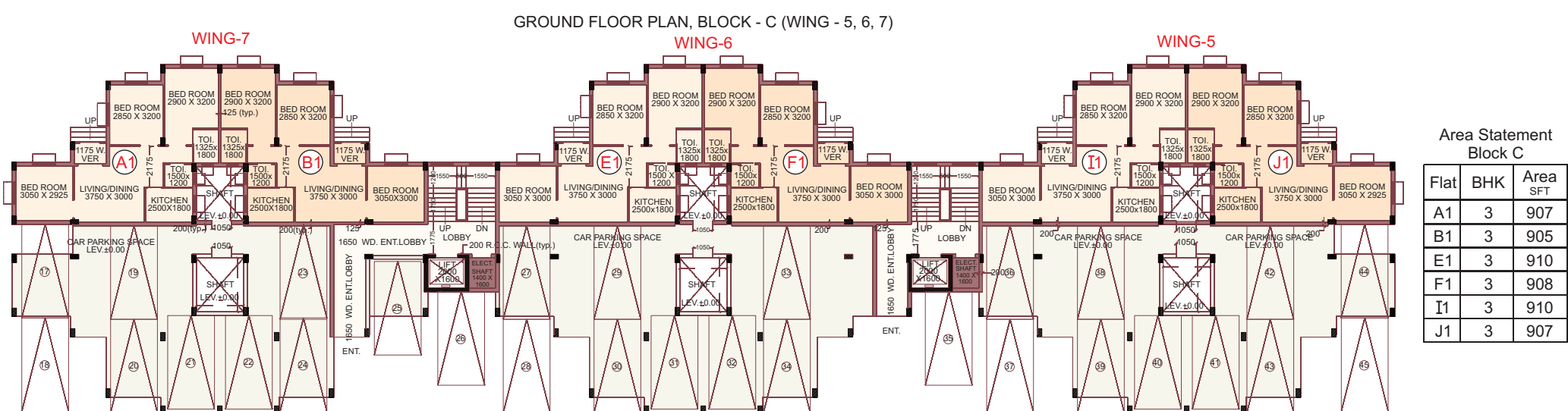
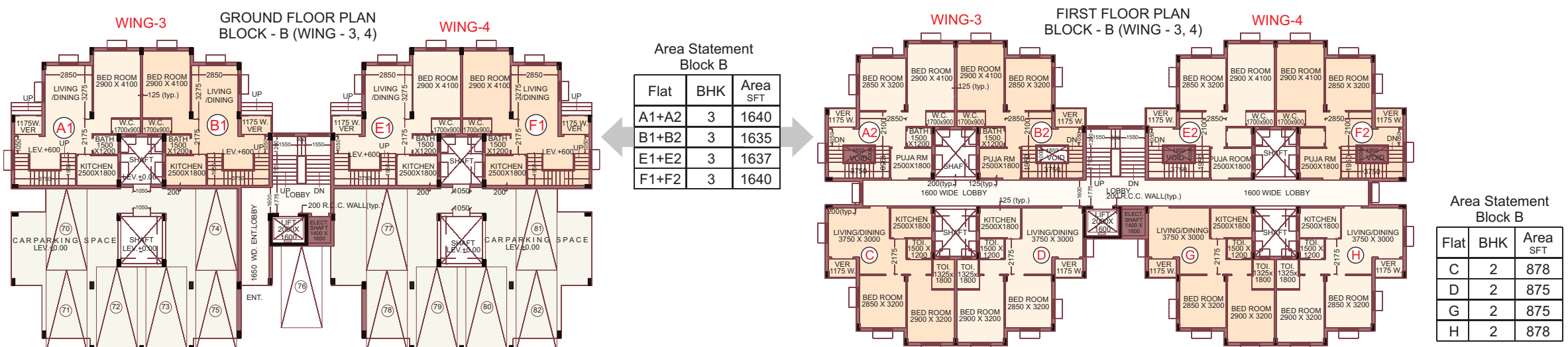
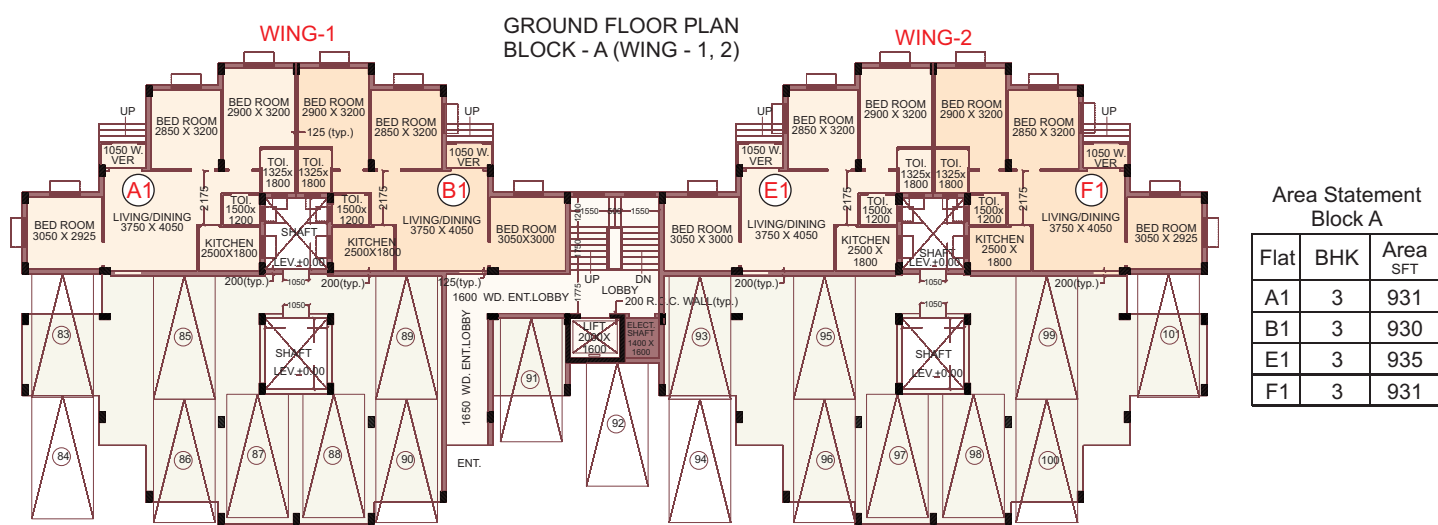
TYPICAL FLOOR PLAN



LANDSCAED PLAN SHOWING BLOCKS POSITION



GROUND FLOOR AND FIRST FLOOR PLAN



Developed by



SD CONSTRUCTION PVT LTD
AA-73, SALT LAKE CITY, SEC-1
KOLKATA-700 064
www.sdgroupkolkata.com

Architect

DJ CONSULTANTS & ASSOCIATES
255, Dum Dum Park, Kolkata - 700 055

Legal Advisor

VICTOR MOSES & CO.
Temple Chamber
6, Old Post Office Street, Kolkata - 700 001

Advocate

Dilip Hom Chowdhury

Marketed by :



Home for All

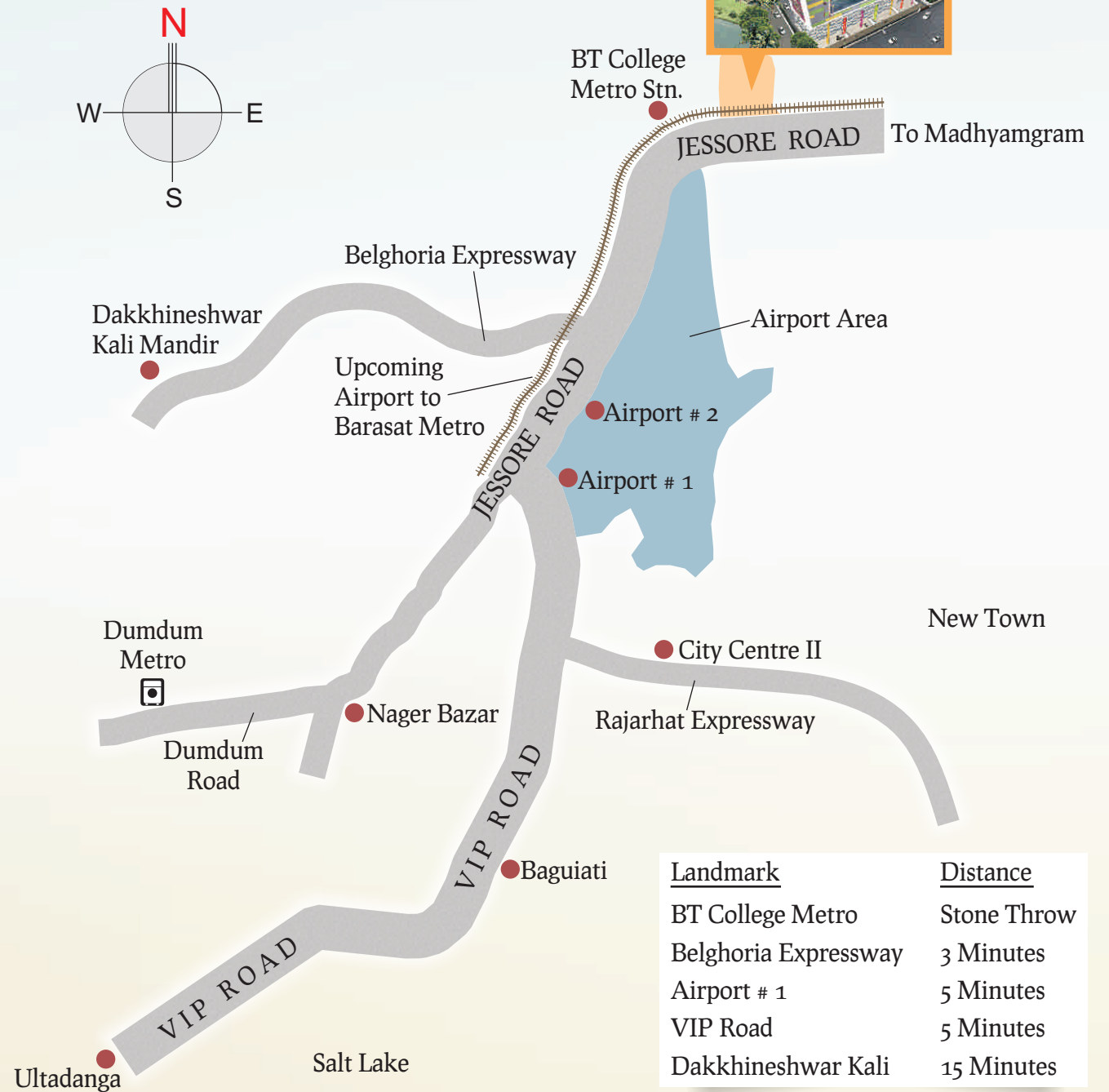
40, Ashutosh Mukherjee Road
2nd Floor, Kolkata - 700 020
E-mail : info@somanirealtors.com
Website : www.somanirealtors.com

Home Loan Available from leading Banks and FI's

for Enquiry

98300 34302, 98300 13890

LOCATION MAP



Disclaimer : This Brochure is not a legal document. It describes the conceptual plan and of the project. The images and the details mentioned in this brochure are tentative and may not resemble to the actual. The developer reserves the right to change the specifications and layout without any prior notice.