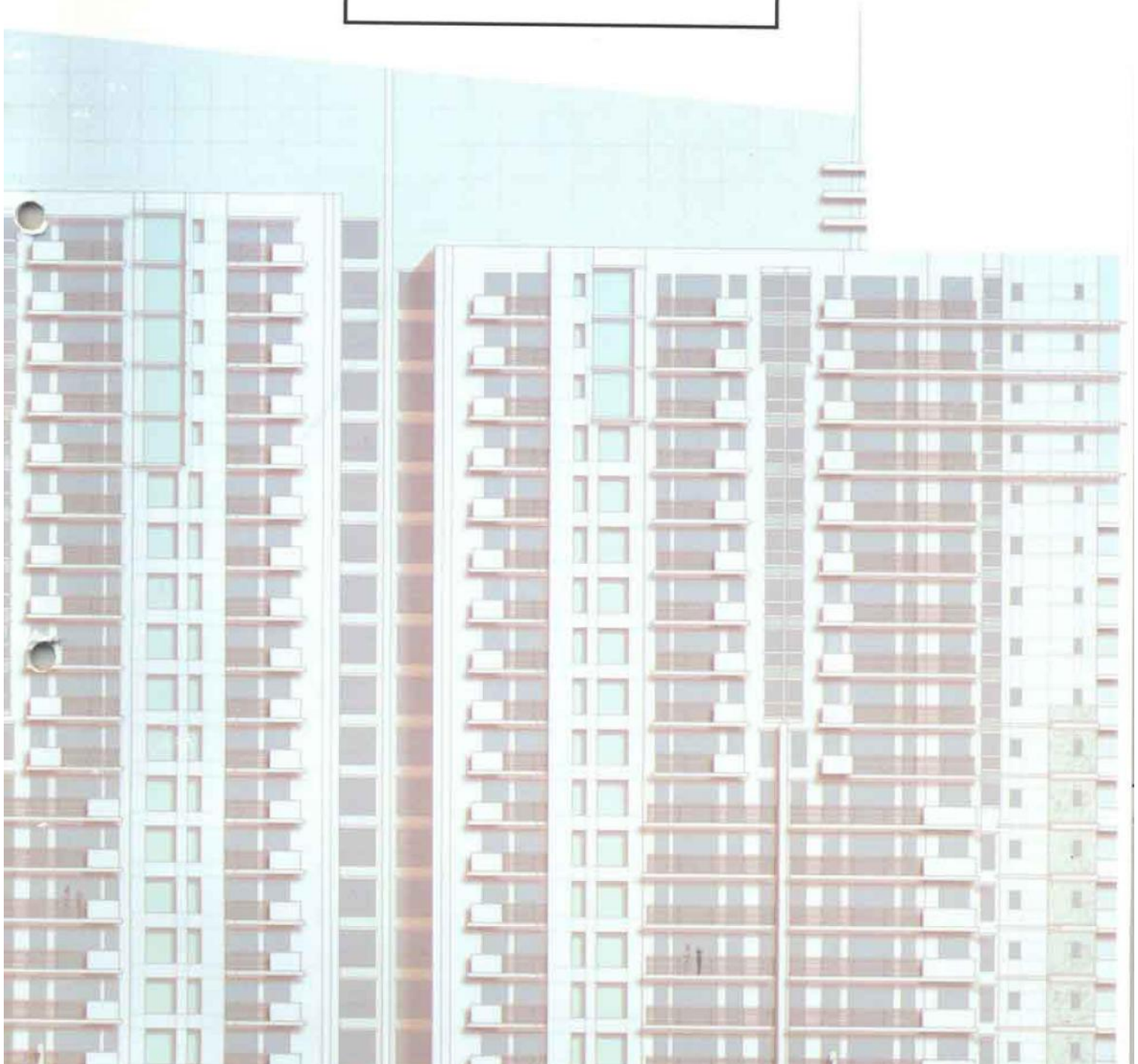




THE ICON



The best of everything

It's a place, which brings the mind and heart in sync.

Standing tall at 18 floors, The Icon blends needs and wants effortlessly. Its five buildings house apartments in different styles. And have a modern facade with glass and aluminium highlights. While the green landscapes surrounding it make it environment friendly. Basically, the Icon brings you all that is needed to make a home what it ought to be. For the kind of people who settle for nothing but the best.

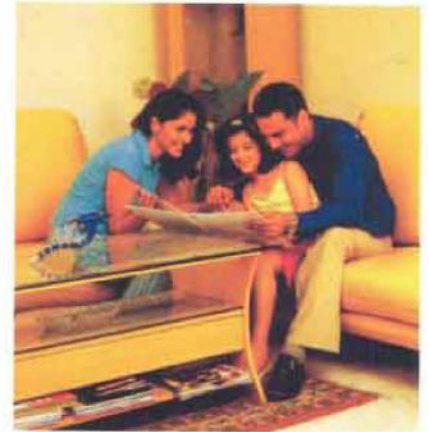
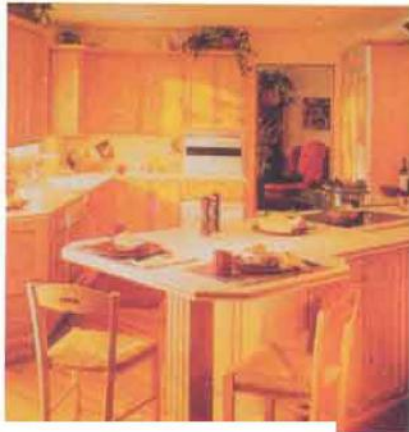




Accessibility & Exclusivity

Situated in Phase V of DLF City, The Icon has posh neighbours. From Westend Heights to The Pinnacle, it is located alongside the most premium addresses. Not to mention, the DLF Golf & Country Club and the South Point Mall, which are close by. What's more, Phase V will be the focal point of DLF for development. There are schools and hospitals under construction nearby that shall be complete by the time you move in. And a 30-metre wide road leading further to a 60-metre wide sector road that connects The Icon to the rest of Gurgaon. Truly, the





Aesthetics & Efficiency

Designed by the renowned Architect Hafeez Contractor, The Icon delivers both style and substance. With only four apartments on every floor, it gives you your own space. Not to mention, an uncrowded elevator lobby. Even inside the apartment, maximum space utilisation has been done to provide you more room. To begin with, there are four spacious bedrooms with attached bathrooms, a service room, three balconies and a large kitchen area. Moreover, there is an independent entry for the

Truly, a well-planned home. At the same time, it's a home designed for those with a fine sense of aesthetics. Right from the imported marble flooring in the living & dining rooms to the superior fittings in the bathrooms, everything spells style. The passages and lobby too have imported marble flooring, while the bedrooms boast of a laminated wooden floor. Even the main entrance lobby is air conditioned so that when you step in, it's a relief from the heat outside. Finesse and function go hand

Comfort & Luxury

A home is more than just bricks and mortar. It also includes the amenities that come along with a house. Things that make life both comfortable as well as interesting. So, on one hand you get 100% power back-up at The Icon, which can run up to four air conditioners even during a power cut. And on the other hand, you have an exclusive club in the complex with a swimming pool, gymnasium and party room in it.

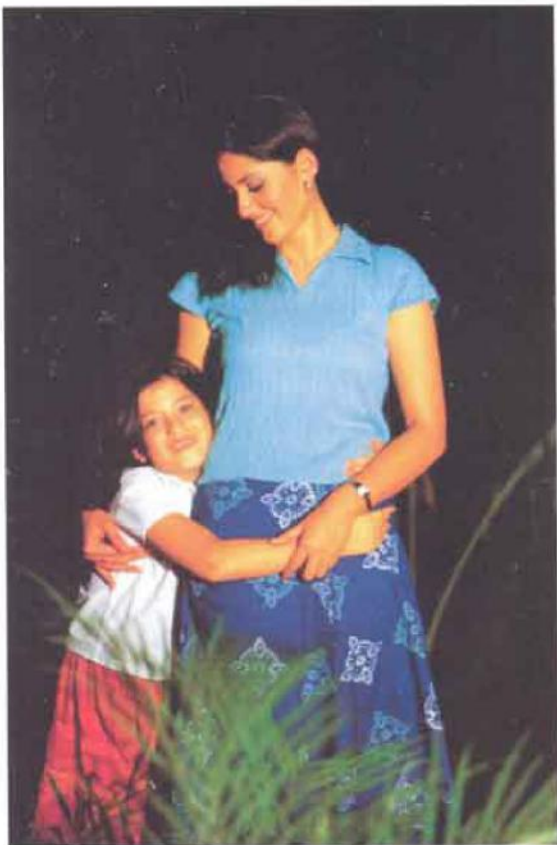
At The Icon you'll discover just the right mix of every day necessities and occasional wants. The comfort and luxury provided extends to every day demands for quality living. Be it in terms of assured water supply through copper pipes or adequate parking spaces. All in all, The Icon truly symbolises the best of quality and comfort.



THE ICON



Protection & Privacy



When it comes to your safety, The Icon takes no chances. It conforms to Zone V seismic considerations as against the mandatory Zone IV. Which means that extra precautions are being taken to ensure safety for you and your family. Fire detection systems with sprinklers are there in every home. Then there is a CCTV for surveillance in the basement and main entrance to the lobby. At the same time, the security measures don't intrude but enhance your lifestyle.

There are access cards for the residents for entry into the entrance lobby at the ground level and lift lobby in the basement. So, while you can freely move in and out of the complex, an outsider can't get in without verification. All these make for a convenient and secure lifestyle, which is a rarity in city life. Thus, The Icon

Past & Future

REAL ESTATE SERVICES

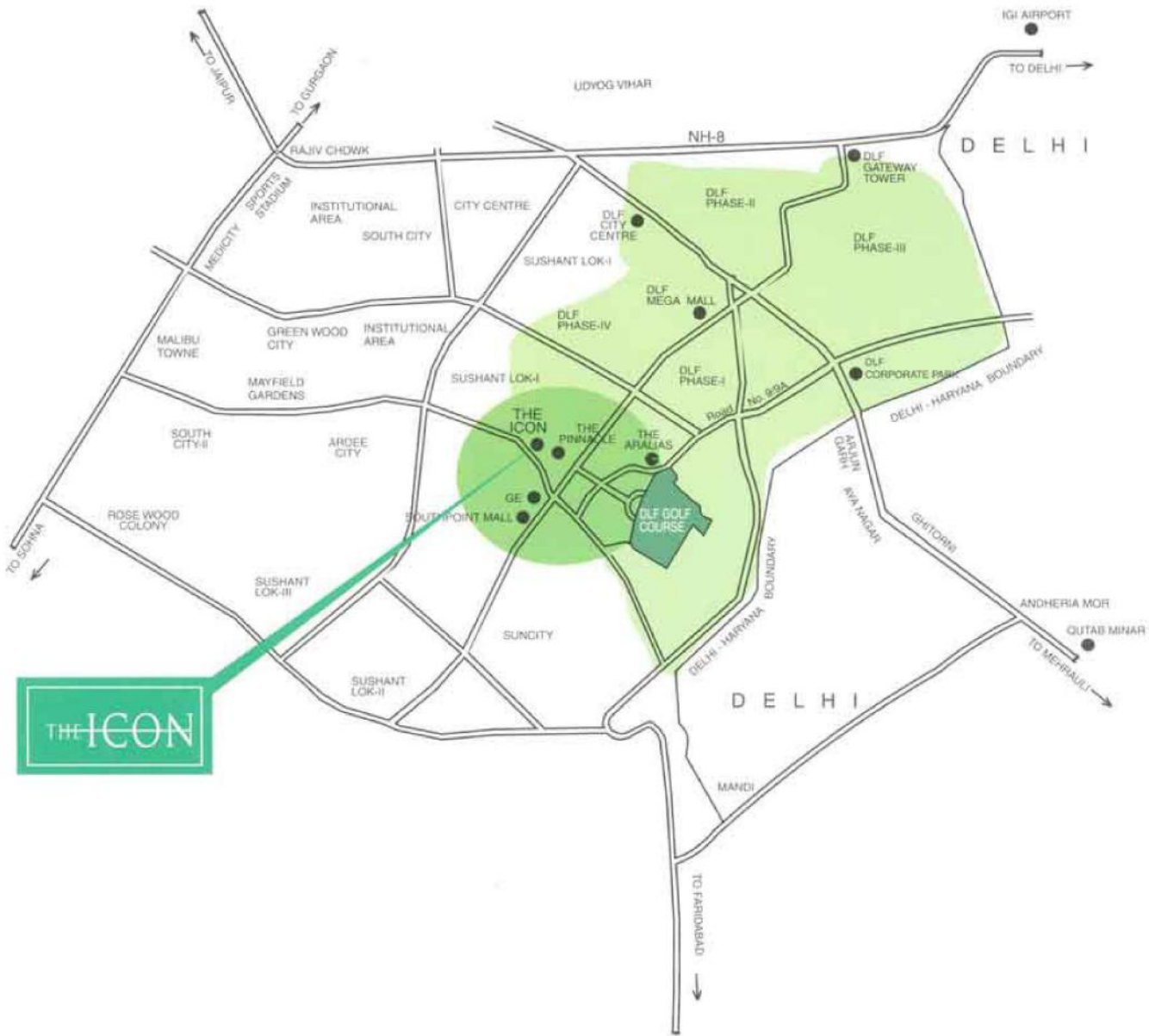
DLF started its journey in 1947. And has come a long way since then, building twenty-one townships in Delhi itself. Before it moved on to Gurgaon and began a project that changed the face of the sleepy town - DLF City. A trendsetter in contemporary urban planning, DLF City is a 3000-acre township. Not only does it have plush apartments and independent homes but it also encourages walk-to-work culture.

Which means, a number of international companies have their offices in DLF City, close to the residential areas. From schools to hospitals, banks to shopping malls, everything is close at hand. The DLF Golf & Country Club is also nearby, for those who like to tee-off. Truly, DLF City has it all. DLF however, isn't resting on its past success. It has plans to go national soon. So that



THE ICON

Location Plan

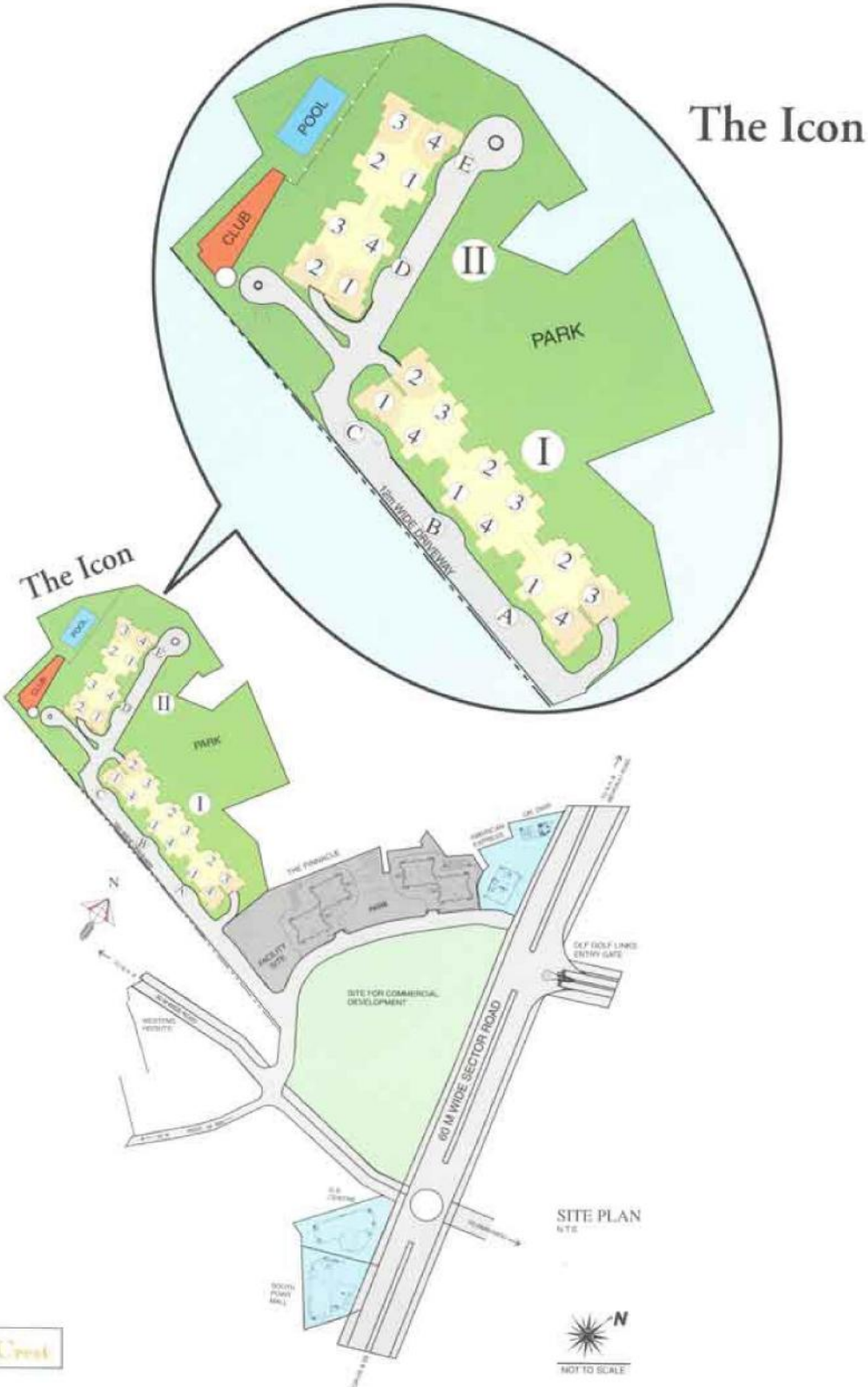


THE ICON



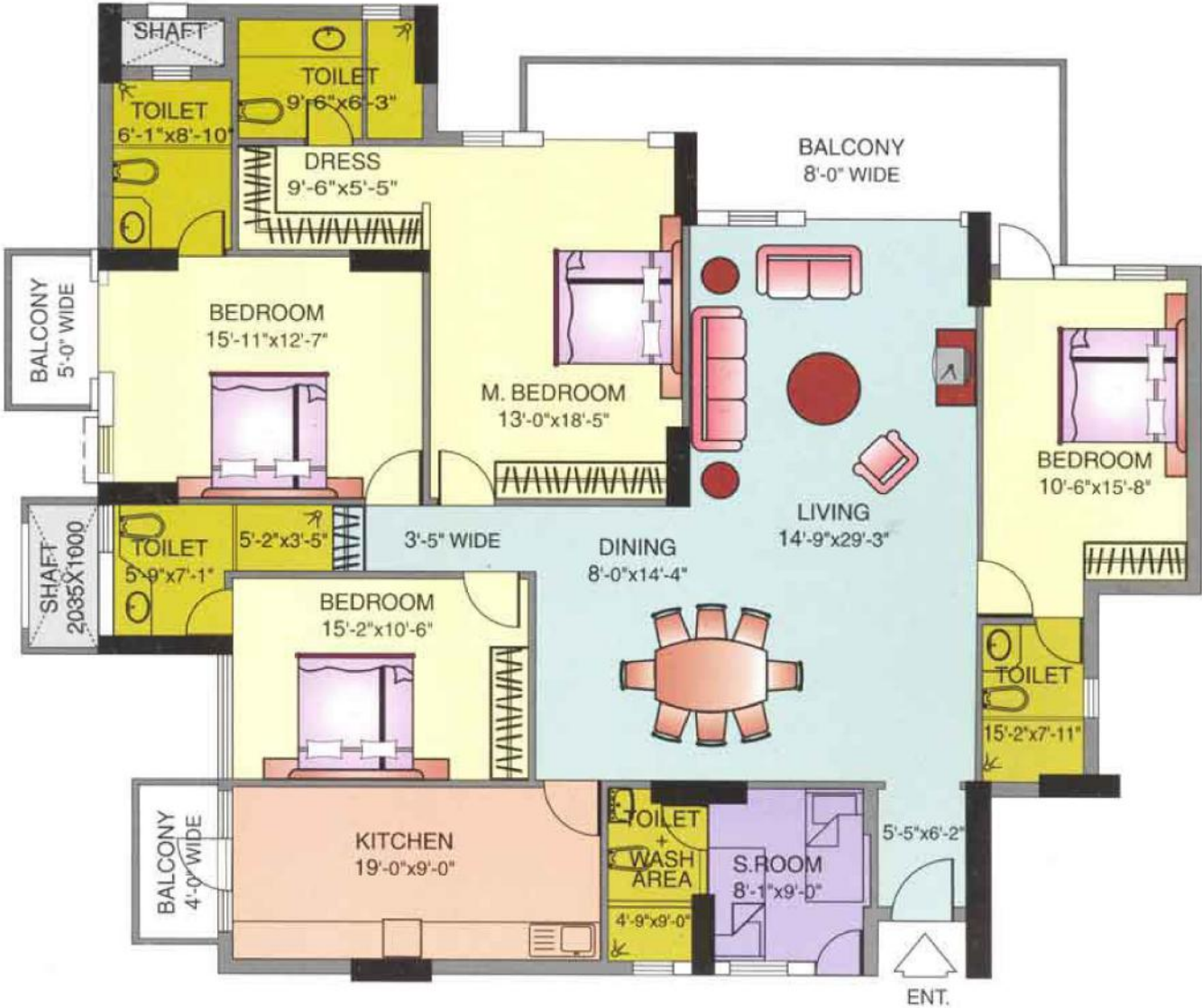
THE ICON

Site Plan



Saleable Area: 2750 sq. ft. (255.48 sq mtrs)

Accommodation: Four Bedrooms + S. Room



1 sq. mtr. = 10.764 sq. ft.

Plan not to scale



Crest | Typical apartment layout plan

Saleable Area: 2575 sq. ft. (239.22 sq mtrs)

Accommodation: Four Bedrooms + S. Room



1 sq. mtr. = 10.764 sq. ft.

Plan not to scale





Specifications

Structure

Designed for seismic consideration for Zone V as per code IS 1893, Year 2002

Living/Dining/Lobby/Passage

Floor (within apartments)	Imported Marble
Walls	Acrylic emulsion with Cornices as per design.
Ceiling	Oil bound distemper

Bedrooms

Floor	Wooden laminated flooring with 2" high standard wooden laminated skirting
Walls	Acrylic emulsion with Cornices as per design
Ceiling	Oil bound distemper

Kitchen

Walls	Combination of ceramic tiles upto 2'-0" above the counter and oil bound distemper in the balance area
Floor	Suitable combination of one or more Indian Marble/Stone/Ceramic tiles
Counter	Granite/Marble
Fittings/Fixtures	Superior quality CP fittings, Stainless steel double bowl/single drain board kitchen sink, Exhaust fan

Balconies

Floor	Terrazo
Ceiling	Exterior Paint

Toilets

Walls	Combination of Ceramic Tiles upto 7'-0", Oil bound distemper and mirror.
Floor	Suitable combination of one or more Indian marble/ Stone/Ceramic tiles
Counters	Granite/Marble
Fittings/Fixtures	Jaquar make or equivalent superior quality single Lever CP fittings, chinaware (Neycor / Paryware / Hindware or equivalent) Ego Ess make or equivalent, Towel rail/ring, Soap dish, Toilet paper holder and coat hook in toilets
Toilet	
Shower Enclosure	Shower curtain/rail with shower curtain

Servant Room & S. Room Toilet

Floor	Terrazo
Walls	Combination of ceramic tiles and oil bound distemper
Ceiling	Oil bound distemper

Doors

Internal doors	Polished/Painted Hardwood frames with polished/painted moulded skin/flush shutters.
Entrance door	Teak veneered and polished shutter/ Moulded skin door
External doors and windows	Powder coated/Anodised aluminium glazing.
Hardware	Brass hardware except for S.Room and S.Room toilet

Electrical

MK make or equivalent modular switches and sockets, copper wiring, (fittings like fans, light fixtures, geysers, appliances etc. not provided)
Backup power of 10KVA per apartment.

Security System

Access cards for residents for entry into the entrance lobby at ground level and lift lobby in basement, CCTV in basement & main entrance lobby for surveillance

Plumbing

Copper piping for water supply, Sprinkler system for fire safety in all areas as per norms. Water softening plant

Club Facility

Party room, Swimming pool, Change rooms and gymnasium

Notes:

- Brand and make are indicative and will be of equivalent make and quality as per availability at the time of execution.
- Marble and Granite being natural materials, have inherent characteristics of colour and grain variation.
- All floor plans, layout plans and specifications are indicative and are subject to change as decided by the Company or Competent Authority.
- In case of non-availability of imported (marble)/ imported marble flooring material equivalent quality Indian substitutes will be used.