

A Project by



YUVA

INFINITY

Come Home to Your Dream



R E D E F I N E L I F E W I T H N A T U R E !



BLUE
MEADOWS

SERENE



SATISFYING



SOULFUL



LIVE FULLY: WHERE LUXURY AND NATURE SHAPE YOUR EVERYDAY

Mere spaciousness and luxury are now things of the past. Today, we seek homes that offer more than just opulence. We desire an environment where our children can grow up close to nature, experiencing an idyllic childhood. We want our parents to unwind in tranquil evenings, surrounded by the soulful melodies of chirping birds and the gentle whispers of wind through the trees. We yearn for a fulfilling life enriched not just by amenities and comforts but by moments nurtured in the embrace of nature.



BLUE
MEADOWS



**BLUE
MEADOWS**

Located in Varthur
beside Varthur Lake

Easy Access to ORR &
Whitefield - ITPL

COME ...
LIVE WITH

NATURE!



Discover a lifestyle that blends urban comforts with the serenity of nature at Yuva Infinity's upcoming gated community in Varthur, Bangalore. Wake up to lush green views, expansive open spaces, and thoughtfully designed eco-friendly amenities that bring you closer to the natural world. Here, every detail—from landscaped gardens to well designed architecture—creates a peaceful retreat from city life. Embrace a harmonious, nature-inspired way of living. race a harmonious, nature-inspired way of living.



DON'T JUST
LIVE, COME

ALIVE . . .



Step into a world where urban elegance meets nature's embrace—amidst natural greens, blooming flowers, and the warmth of a perfect home. As you enter Yuva Infinity's Blue Meadows through a grand, welcoming gate, you're greeted by a thoughtfully designed community that blends luxury with nature. Every amenity is crafted to elevate your everyday experience, creating a sanctuary where life thrives.

2.27 ACRES GATED COMMUNITY

APPROVED BY **BBMP & RERA REGISTERED**

STILT + GROUND + 3 FLOORS

CC & OC PROJECT

LAKE VIEW

WORLD-CLASS LUXURY AMENITIES

VASTU-COMPLIANT UNITS

2, 2.5 & 3 BHK




BLUE
MEADOWS



LIVE! CONTEMPORARY
ARCHITECTURE

STYLISH
STYLISTS



Blue meadows phase 2

BLUE
MEADOWS



A WELL
DESIGNED

COMMUNITY

- ### HIGHLIGHTS
- SOLAR HEATER FOR MASTER BEDROOM
 - NO COMMON WALLS
 - PROVISION FOR BROADBAND & DTH
 - EXCELLENT VENTILATION
 - STP
 - RAINWATER HARVESTING
 - POWER BACKUP **0.5 KVA**
 - 24 HRS. SECURITY
CCTV SURVEILLANCE
APP BASED INTERCOM FACILITY





16,000 SFT.
YOUR SOCIAL
SANCTUARY CLUBHOUSE

Step into a world of leisure and connection at our exclusive clubhouse. Here, you'll find spaces designed for relaxation, rejuvenation, and community. Whether you're gathering with friends, unwinding after a long day, or pursuing your favourite hobbies, the clubhouse offers the perfect blend of sophistication and comfort.



FAMILY SWIMMING POOL



MEDITATION/ YOGA



STATE-OF-THE ART GYM



CLUBHOUSE
LUXURIES



INDOOR GAMES



CRECHE



PARTY HALL





WHERE NATURE, DESIGN, AND PLAY UNITE

Surround yourself with scenic landscapes and beautifully designed outdoor spaces that invite moments of peace and connection. Our community's green spaces are carefully landscaped to enhance the beauty of nature, while areas for outdoor games bring vibrancy and joy. From winding pathways to well-maintained courts, each detail is tailored to inspire residents of all ages to relax, play, and thrive.



WELL-DESIGNED,
AND PROFESSIONALLY
LANDSCAPED GARDENS

FLOWER GARDENS

CHILDREN PLAY ARENAS

SEATING ZONES

SKATING RINK

JOGGING TRACK

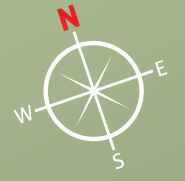
CRICKET PRACTICE PITCH

OUTDOOR GYM

HALF BASKET BALL COURT

BADMINTON COURT





PHASE 1

MASTER PLAN

LEGEND

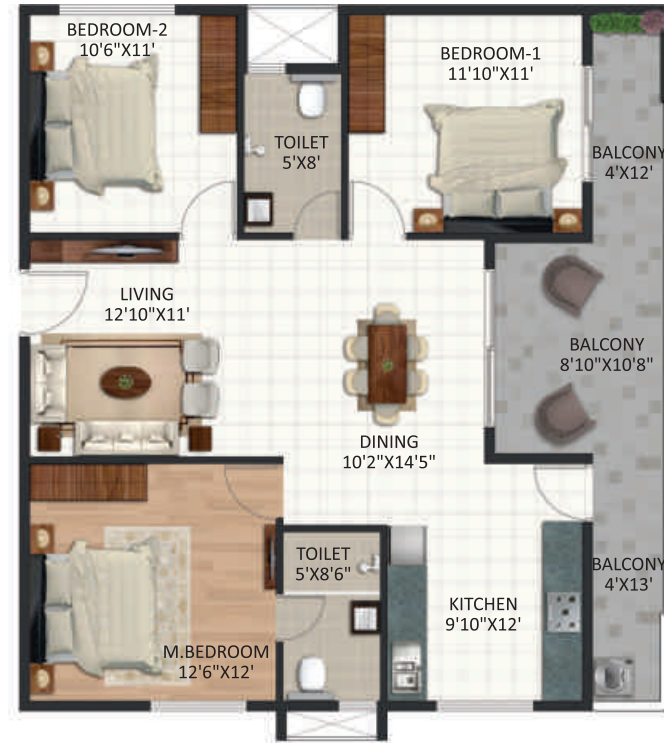
- 1. ENTRANCE ARCH
- 2. OUTDOOR LOUNGE
- 3. LOBBY WITH PERGOLAS
- 4. STEPPED PLANTER BOX WITH SEATING
- 5. MULTI-PURPOSE LAWN
- 6. STAGE
- 7. DECK
- 8. KID'S POOL
- 9. SWIMMING POOL
- 10. OUTDOOR YOGA
- 11. MEDITATION ZONE
- 12. SENIOR CITIZEN PARK
- 13. WATER FEATURE WITH SPOUTS
- 14. COLORED COBBLED STONE PATHWAY WITH BENCHES
- 15. KID'S PLAY AREA
- 16. SAND PIT
- 17. SKATING RINK
- 18. NET CRICKET PITCH
- 19. BADMINTON COURT
- 20. MINI BASKET BALL COURT
- 21. GRASS PAVERS
- 22. OUTER GYM
- 23. FLOWER GARDEN

GROUND FLOOR PLAN

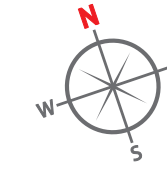
TYPE-1 | F-001, 2.5 BHK | WEST FACING | 1490 SFT



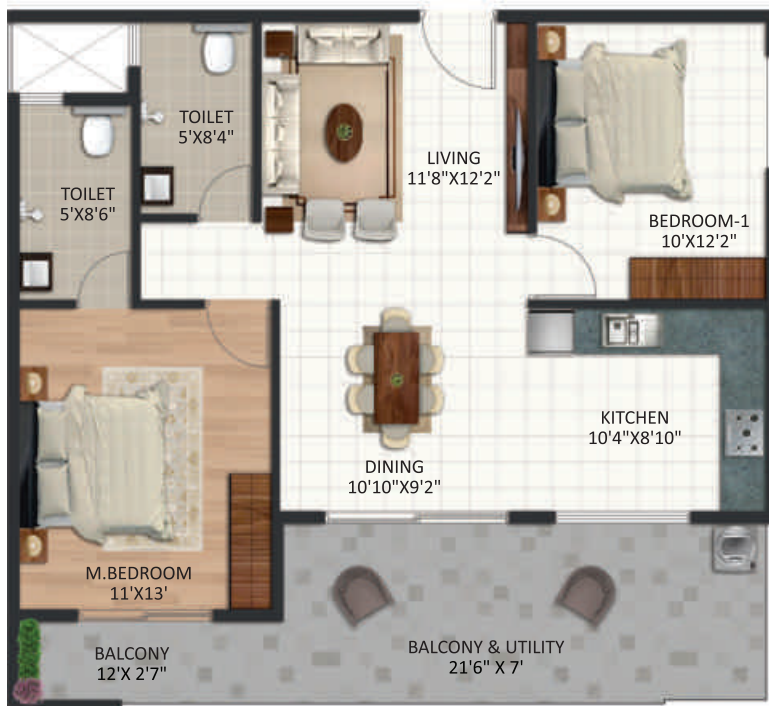
TYPE-2 | F-002,003 | WEST FACING | 1525 SFT



TYPE-5 | F-007,008,009 010, 3 BHK | NORTH FACING | 1470 SFT



TYPE-3 | F-004,005,012 013, 2 BHK | NORTH FACING | 1270 SFT



TYPE-4 | F-006,011 | NORTH FACING | 1345 SFT



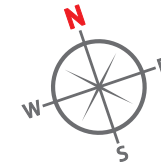
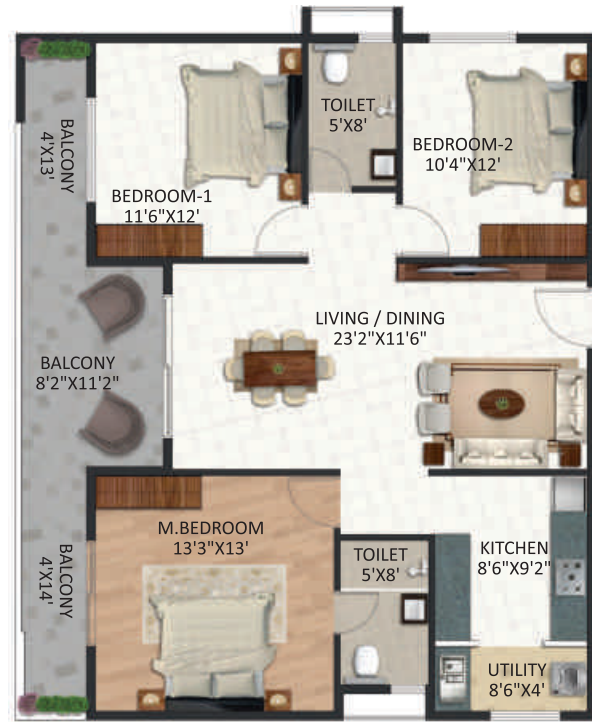
TYPE-6 | F-014, 3 BHK | NORTH FACING | 1840 SFT



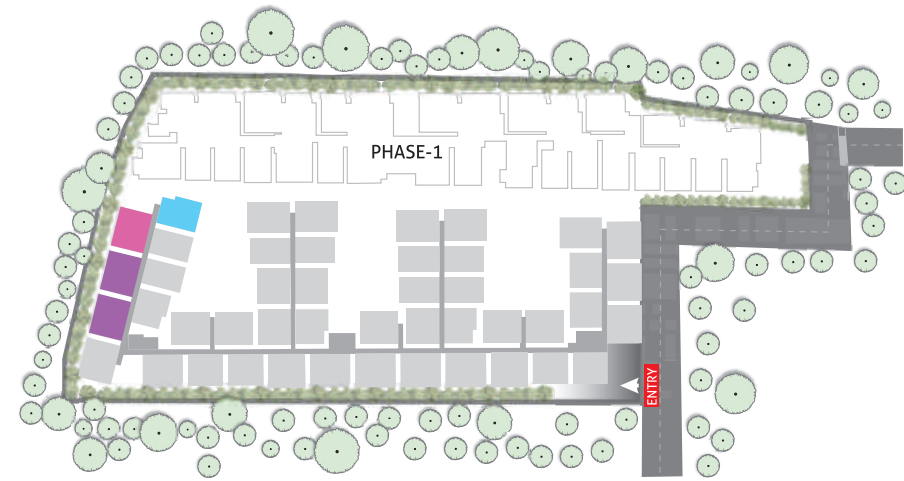
TYPE-7 | F-015, 3 BHK | EAST FACING | 1550 SFT



TYPE-8 | F-016, 017 | **EAST FACING** | 1625 SFT
3 BHK



BLUE MEADOWS



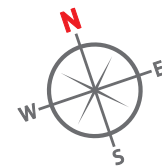
TYPE-9 | F-018, 3 BHK | **EAST FACING** | 1695 SFT



TYPE-10 | F-019, 2 BHK | **WEST FACING** | 1280 SFT



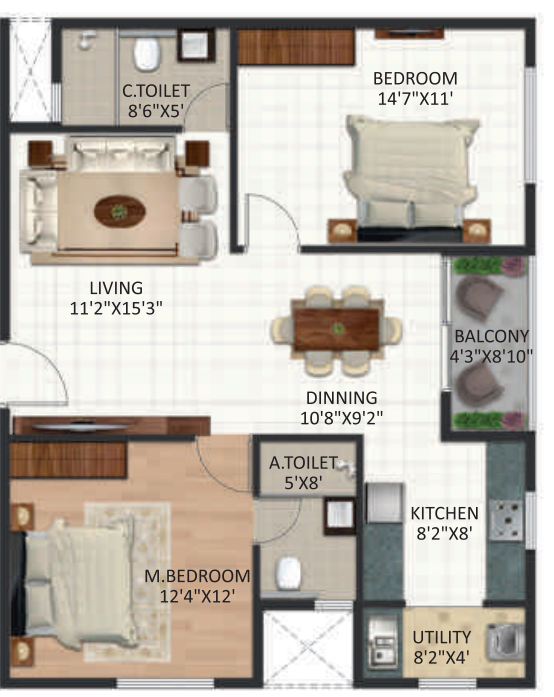
BLUE MEADOWS



TYPE-11 | F-020, 021, 030, 039, 2 BHK | WEST FACING | 1250 SFT



TYPE-12 | F-022, 032 041, 2 BHK | WEST FACING | 1170 SFT



TYPE-15 | F-025,034 | 2 BHK | EAST FACING | 1190 SFT



TYPE-17 | F-026,044 | 2 BHK | EAST FACING | 1190 SFT



TYPE-13 | F-023,033,042 | 2.5 BHK | EAST FACING | 1280 SFT



TYPE-14 | F-024,043 | 2.5 BHK | WEST FACING | 1280 SFT



TYPE-16 | F-027,035,036 | 2 BHK | EAST FACING | 1250 SFT



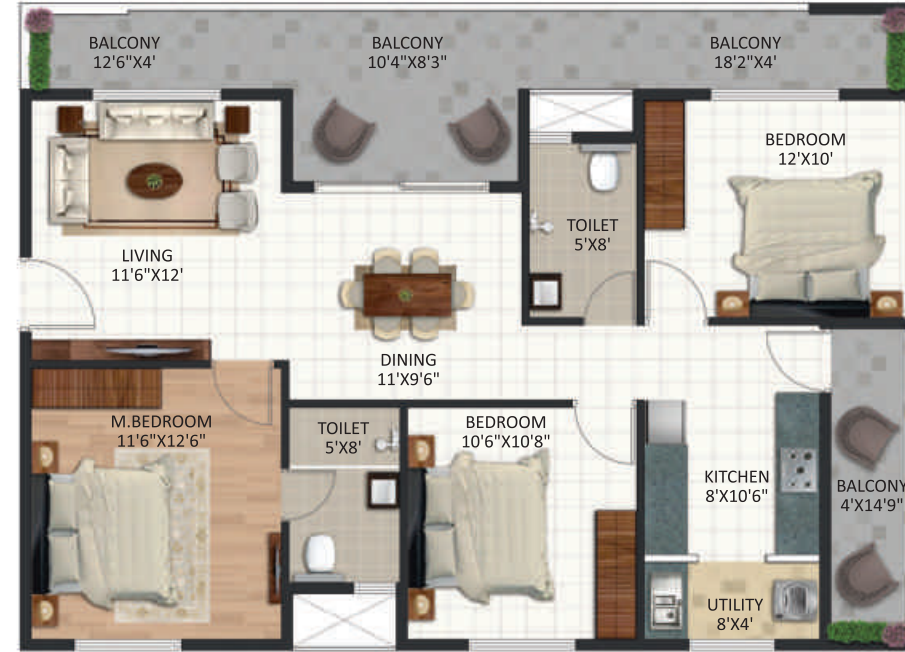
TYPE-18 | F-028, 2.5 BHK | EAST FACING | 1360 SFT



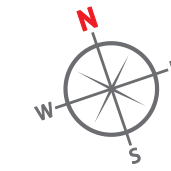
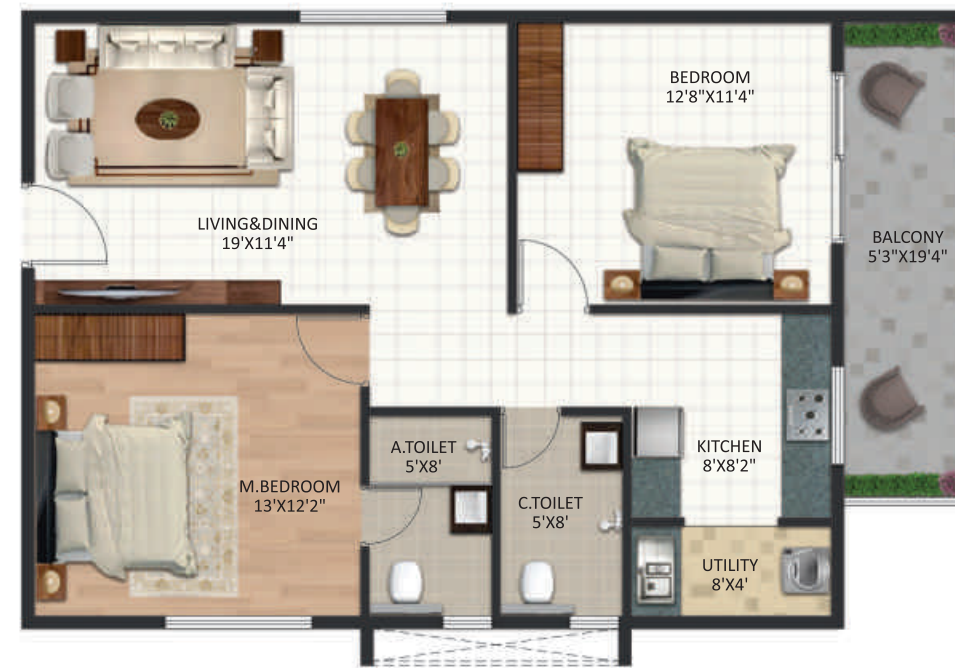
TYPE-19 | F-029, 2.5 BHK | WEST FACING | 1365 SFT



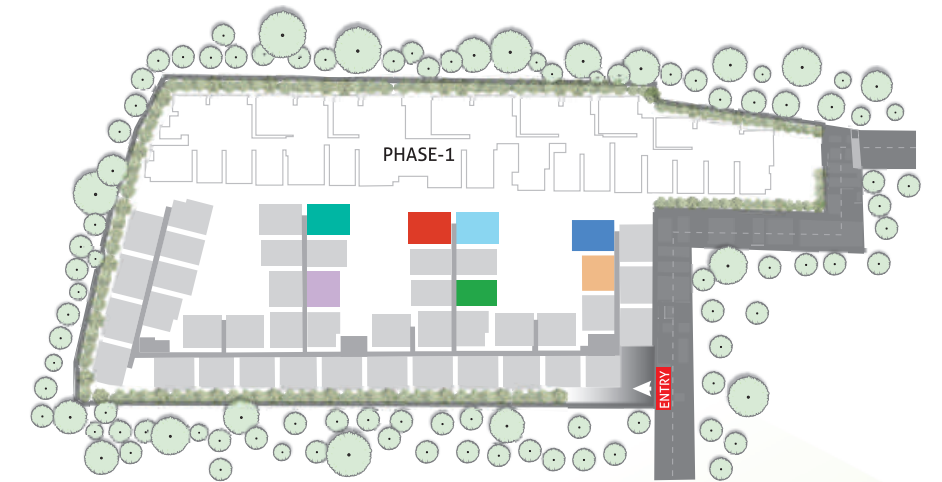
TYPE-21 | F-038, 2.5 BHK | WEST FACING | 1580 SFT



TYPE-23 | F-040, 2 BHK | WEST FACING | 1215 SFT



BLUE MEADOWS



TYPE-20 | F-031, 2 BHK | WEST FACING | 1345 SFT



TYPE-22 | F-037, 2.5 BHK | EAST FACING | 1560 SFT



TYPE-24 | F-045, 2 BHK | EAST FACING | 1365 SFT

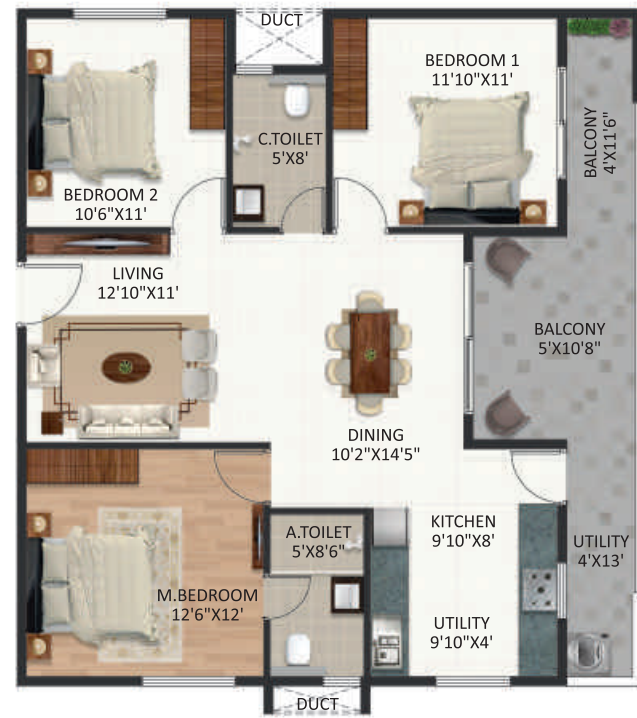


TYPE-25 | F-046, 2.5 BHK | EAST FACING | 1715 SFT



TYPICAL FLOOR PLAN

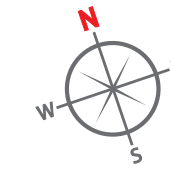
TYPE-12 | F-101-103,201-203, 301-303, 2.5 BHK | **WEST FACING** | 1525 SFT



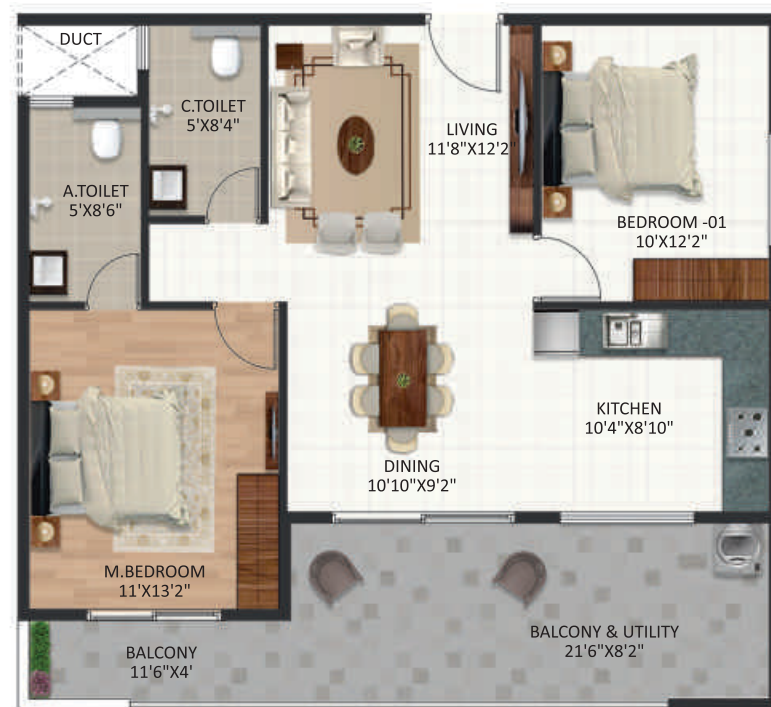
TYPE-14 | F-106,111,206,211, 306,311, 2.5 BHK | **NORTH FACING** | 1525 SFT



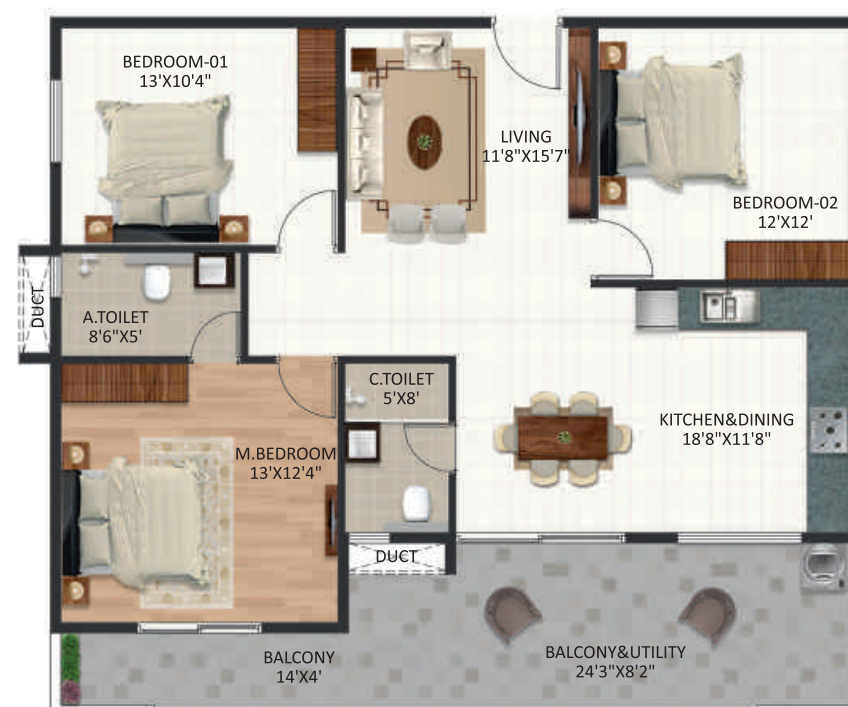
TYPE-16 | F-114, 214, 314, 3 BHK | **NORTH FACING** | 1840 SFT



TYPE-13 | F-104,105,112,113, 204,205,212,213, 304,305,312,313, 2 BHK | **NORTH FACING** | 1325 SFT



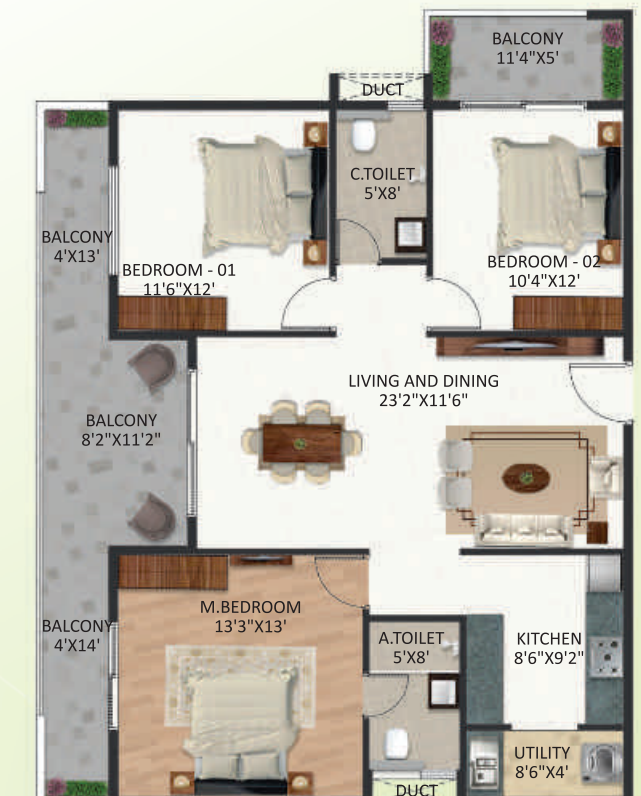
TYPE-15 | F-107-110, 207-210, 307-310, 3 BHK | **NORTH FACING** | 1670 SFT



TYPE-17 | F-115,116,117, 215,216,217, 315,316,317, 3 BHK | **EAST FACING** | 1625 SFT



TYPE-18 | F-118,218,318, 3 BHK | **EAST FACING** | 1695 SFT



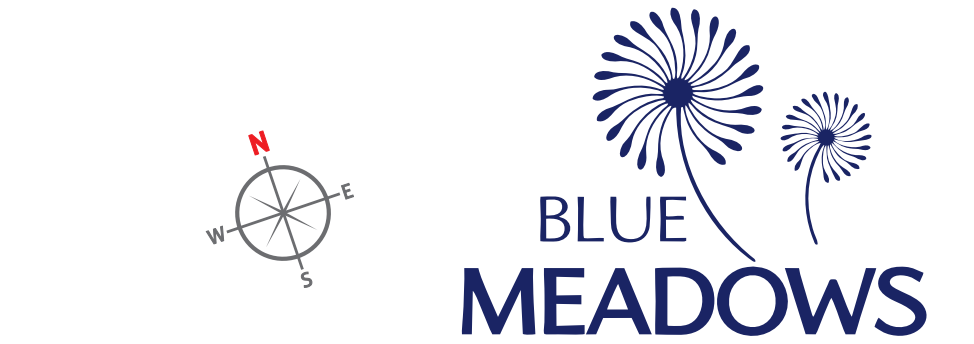
TYPE-19 | F-119,219,319, 2 BHK | **WEST FACING** | 1415 SFT



TYPE-21 | F-122, F-222,232,241, F-322,332,341, 2 BHK | **WEST FACING** | 1280 SFT



TYPE-23 | F-124,143, F-224,243, F-324,343, 2.5 BHK | **WEST FACING** | 1455 SFT



TYPE-20 | F-120,121,130,139,140, F-220,221,230,239,240, F-320,321,330,339,340, 2 BHK | **WEST FACING** | 1250 SFT



TYPE-22 | F-123,133,142, F-223,233,242, F-323,333,342, 2.5 BHK | **EAST FACING** | 1455 SFT



TYPE-24 | F-125, F-134, F-225, F-234, F-325, F-334, 2 BHK | **EAST FACING** | 1335 SFT



TYPE-25 | F-126,144,145, F-226,244,245, F-326,344,345, 2 BHK | **EAST FACING** | 1365 SFT



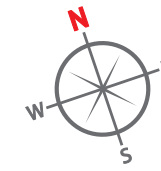
TYPE-26 | F-127,135,136
F-227,235,236
F-327,335,336, 2 BHK | **EAST FACING** | 1250 SFT



TYPE-28 | F-129,138,229,238,
329,338, 2.5 BHK | **WEST FACING** | 1580 SFT



TYPE-30 | F-132,141, 2 BHK | **WEST FACING** | 1280 SFT



BLUE MEADOWS



TYPE-27 | F-128,137,146
F-228,237,246
F-328,337,346, 2.5 BHK | **EAST FACING** | 1560 SFT



TYPE-29 | F-131,134,231,234
331,334, 2 BHK | **WEST FACING** | 1345 SFT



SPECIFICATIONS

- STRUCTURE**
RCC Framed Structure designed ISI Code using M25 grade concrete.
- WALL**
External walls - 6" Solid blocks, Internal walls - 4" Solid blocks, Independent walls for all flats.
- FLOORING**
Vitrified tiles for living, dining, kitchen & bedrooms with 4" skirting, Anti-skid ceramic tiles for utility, toilets and balcony, Lift lobby, common area and staircases: Granite flooring.
- DADOING**
Kitchen and toilet dado: Ceramic tiles.
- PAINTING**
Interior walls: One coat of primer & two coats of Tractor emulsion paint with smooth finish, Exterior Walls: One coat of primer & two coats of Weather proof cement paint.
Main door: Teak polish & Other doors enamel paint.
- DOORS & WINDOW**
Main door: Engineering wood frame with OST shutters.
Internal door: Engineering wood frame with ready made flush door shutters, Three track U P V C window with provision for bug screen, MS Safety grills for all windows.
- WATER SUPPLY**
Water supply through borewells, Provision for Cauvery water.
- TOILET**
7 feet height of glazed tile dadoing, Wall mounted commodes with concealed flush tank and CP Fittings with ISI Standard make.
- PLUMBING**
ISI Standard make.
- KITCHEN**
20mm Black granite kitchen platform with stainless steel ink, 2 feet dado above granite kitchen platform in ceramic glazed tiles, Reputed ISI make CP fittings.
- ELECTRICAL**
Concealed copper wiring with modular switches for all points, Exhaust fan points for kitchen & toilets, 15 amps power plug points in kitchen & toilets, Individual TV & Telephone points in main hall & master bedroom. Provision for Internet cable pin point, AC Point in Master bedroom.
- LIFTS & LOBBY**
Entrance lobby finished with Granite flooring, staircase with SS railing, 6 No. of 8 passenger capacity lifts with ISI standard make.
- GENERATOR BACKUP**
0.5 KVA generator backup power for each flat, Additional power back-up for lift, water pumps and common area lighting.
- SECURITY**
Every house will be connected to security office through Mobile app base intercom, CCTV Surveillance.

HIGHLIGHTS

WORKS/IT/ITES

- Eco Space : 7.4 KM
- Wipro: 5.5 KM
- Intel: 5.9 KM
- Microsoft: 7.6 KM
- Genpact: - 6.5 KM

HEALTHCARE

- Jayadeva Hospital: 17 KM
- Sakra World Hospital: 6.8 KM
- St. John's Hospital: 16 KM
- Narayana Multispeciality Hospital: 2.8 km
- Manipal Hospital : 2.1 KM

EDUCATIONS

- VIBGYOR High School: 3.5 KM
- Orchids The Intl. School: 3.2 KM
- Euro School: 2.7 KM
- Chaitanya Techno School : 0.5 KM
- National Public School: 0.5 KM
- Chrysalis School : 2.5 KM

ENTERTAINMENT

- Nexus Mall : 2.5 KM
- Market Square Mall: 5 km
- Oasis Centre : 4.3 km
- Centro Mall : 6.8 KM
- VR Mall : 11 KM
- Phoenix Market City : 11 KM

LOCATION PLAN

Not to scale



WHERE CONNECTIVITY MEETS TRANQUILITY

Located in Bangalore's eastern corridor, Varthur offers easy access to IT hubs like Whitefield and Outer Ring Road, while maintaining its tranquil charm. Surrounded by lush greenery and Varthur Lake, it combines urban convenience with natural beauty with excellent schools, healthcare, and entertainment nearby, it's an ideal spot for modern living.

Note: This brochure is only a conceptual presentation of the project and not a legal offering. The promoters reserve the right to alter and make changes in elevation, specifications and plans as deemed fit.



LOCATION QR CODE



TEAM

ARCHITECTURE

POORNAKRITI
POORNAKRITI ARCHITECT
Ph.: +91 80 23412353

STRUCTURAL ENGINEERING

ADHARSHILA
ADHARSHILA STRUCTURAL
Cell : +91 94496 95192

MEP

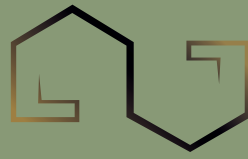
ESVE Design Solutions Pvt. Ltd.
Cell : +91 080 2666 4152 / 4195

PROJECT FINANCE

ADITYA BIRLA CAPITAL
Aditya Birla Housing Finance Ltd.
Project is Financed by and Mortgaged to Aditya Birla Housing Finance Ltd.

BRANDING

D3 Concepts
Mob: +91 98491 92657



YUVA
INFINITY
Come Home to Your Dream

Corporate Office Address :

No. 92, Nanjudappa Garden, Kodigehalli Main Road,
Ayappa Nagar, KR Puram, Bangalore - 56003

Site Address :

Sy No. 12/3, 12/10, 12/11, 12/9, 12/13, 12/14 and
12/15, IDGAH Road, Varthur, Bangalore - 560087

Call: 9980872477, 7406559464

www.yuvainfinity.in