

Where Life Finds
Rhythm

JAINS
RADHAKRISHNA
Bliss

📍 L.B.Nagar





Thoughtful Design Meets Everyday Convenience



Connections come easier, routines feel smoother, and spaces reflect a quiet sense of comfort. It's an environment shaped for clarity, balance, and ease. A refined beginning to a life that moves toward bliss.



Project Highlights



Spread Across

1.5 Acres



Total Number of

Flats - 213



40 Floors

Single Tower



4 Basements

+ 2 Stilts



23,000 sq.ft

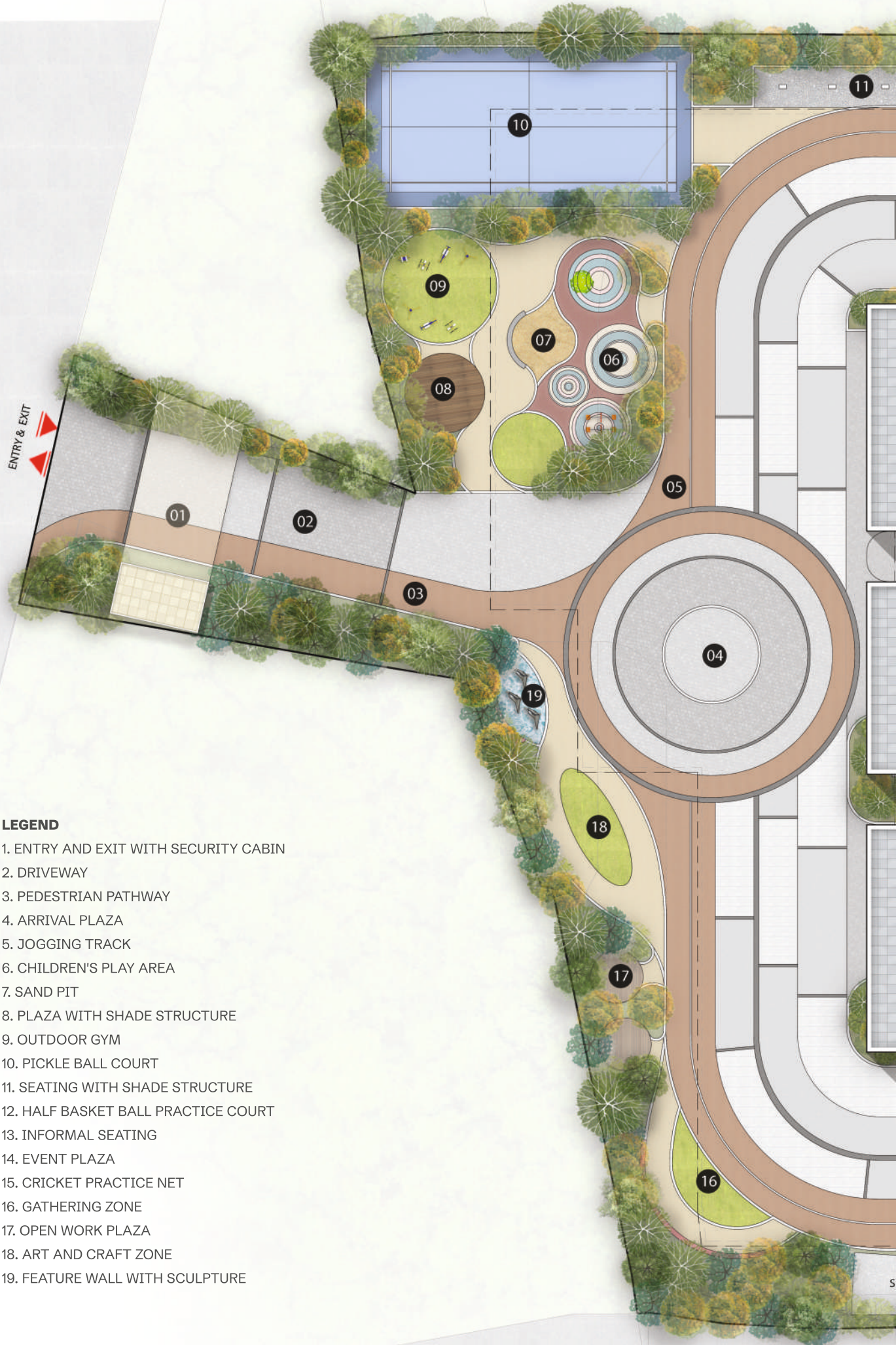
Indoor 2-Level Clubhouse



36 Floors

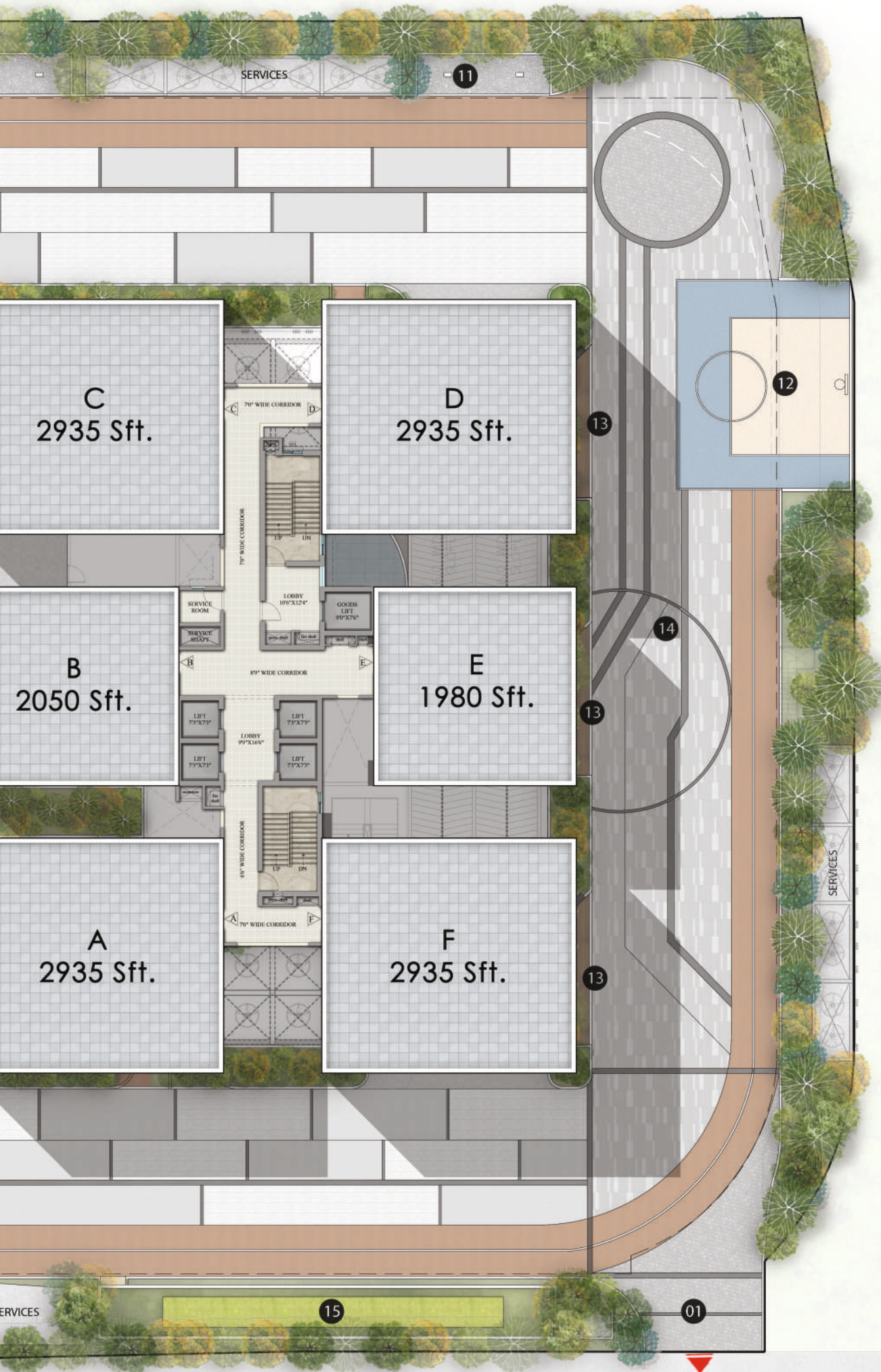
of Exquisite Flats

Site Plan



LEGEND

1. ENTRY AND EXIT WITH SECURITY CABIN
2. DRIVEWAY
3. PEDESTRIAN PATHWAY
4. ARRIVAL PLAZA
5. JOGGING TRACK
6. CHILDREN'S PLAY AREA
7. SAND PIT
8. PLAZA WITH SHADE STRUCTURE
9. OUTDOOR GYM
10. PICKLE BALL COURT
11. SEATING WITH SHADE STRUCTURE
12. HALF BASKET BALL PRACTICE COURT
13. INFORMAL SEATING
14. EVENT PLAZA
15. CRICKET PRACTICE NET
16. GATHERING ZONE
17. OPEN WORK PLAZA
18. ART AND CRAFT ZONE
19. FEATURE WALL WITH SCULPTURE



C
2935 Sft.

D
2935 Sft.

B
2050 Sft.

E
1980 Sft.

A
2935 Sft.

F
2935 Sft.

SERVICES

SERVICES

EXIT

11

12

13

14

13

13

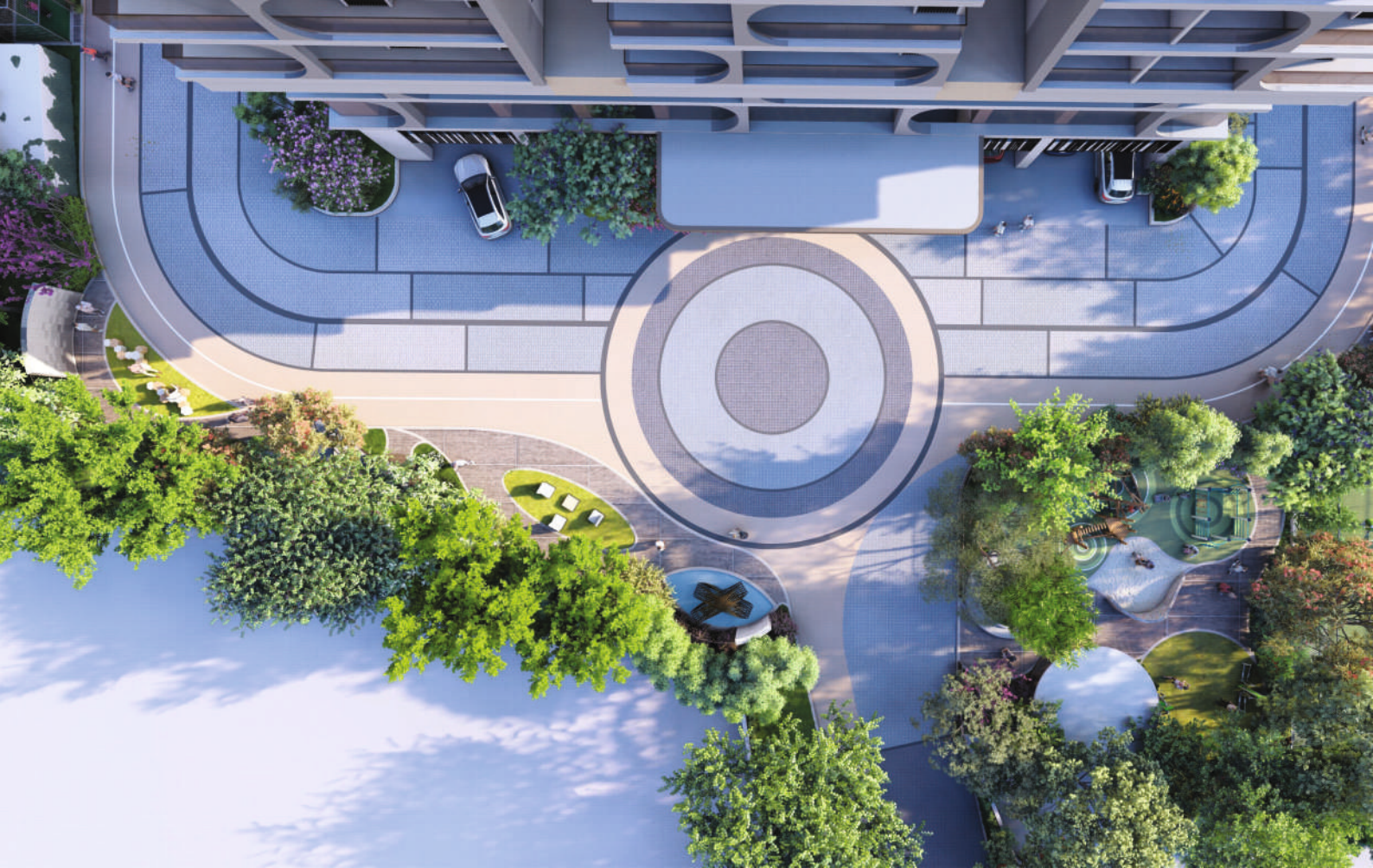
15

01

Floor Plan



Apartment Series	Type	Facing	Carpet Area of Each Unit Including Internal Walls	Outer Wall / Balcony / Verandah / Utility	Share of Common Areas	Saleable Area of Each Unit
A	4BHK	East	1615 Sq.Ft.	618 Sq.Ft.	702 Sq.Ft.	2935 Sq.Ft.
B	3BHK	East	1162 Sq.Ft.	396 Sq.Ft.	492 Sq.Ft.	2050 Sq.Ft.
C	4BHK	East	1552 Sq.Ft.	681 Sq.Ft.	702 Sq.Ft.	2935 Sq.Ft.
D	4BHK	West	1615 Sq.Ft.	618 Sq.Ft.	702 Sq.Ft.	2935 Sq.Ft.
E	3BHK	West	1185 Sq.Ft.	320 Sq.Ft.	475 Sq.Ft.	1980 Sq.Ft.
F	4BHK	West	1615 Sq.Ft.	618 Sq.Ft.	702 Sq.Ft.	2935 Sq.Ft.



50+ Amenities

State-of-the-art amenities crafted for an active and fulfilling lifestyle. From fitness to leisure, every detail is designed to keep life moving beautifully.



HALF BASKETBALL PRACTICE COURT



OUTDOOR PLAY AREA





GATHERING ZONE



SHADE SEATING



INFORMAL SEATING

Location Map

Not to Scale



Sai Baba Temple
Dilsukhnagar

Shalini
Cinemas

Kamala Nagar

OMNI Hospitals

South India
Shopping Mall
Kothapet

Dilsukhnagar
Public School

Sai Sanjeevini
Hospitals

Pantaloons

Rajeevgandhi
Nagar

Doctors
Colony

Ankura Hospital

Tank Bund

Priyadarshini
Park

Saroornagar

Saroornagar
Indoor Stadium

D Mart

Delhi
International School

Hotel Shubham
Palace - Karmanghat

L.B Nagar
Metro Station

L.B Nagar
X Road

JAINS
RADHAKRISHNA
Bliss

Kharmanghat

Akshara
International
School

Pindi Pulla
Reddy Gardens

APSEB
Colony



Scan QR
for location



NEIGHBOURHOOD ESSENTIALS

Education

Akshara International School	04 min
Birla Open Minds International School	05 min
Delhi International School	06 min
Dilsukhnagar Public School	08 min
Orchids International School	20 min

Healthcare

Mediciti Hospital	01 min
Kamineni Hospitals	02 min
Rainbow Childrens Hospital	04 min
Ankura Hospital	06 min
OMNI Hospitals	15 min

Commercial / IT / Sez

Adibatla SEZ	30 min
TCS SEZ	30 min
Pocharam IT Park	40 min
Tata Boeing Aerospace	40 min

LOCATION HIGHLIGHTS

Very close to the Vijayawada Highway, ensuring fast and smooth connectivity

- 📍 LB Nagar Metro Station just 2 minutes away
- 📍 Nagole within 10 minutes
- 📍 Uppal approximately 15 minutes away
- 📍 Convenient access to NH 65, ORR, and major city hubs
- 📍 RGIA Airport is about 21 km away, roughly a 30-minute drive

Project Specifications



STRUCTURE

1. Earthquake Resistant Foundation with RCC framed structure with Mivan aluminum Shuttering to withstand wind & seismic loads by Ultratech RMC or equivalent make, Steel - TATA STEEL/JSW/VSP/SAIL/Jindal Panther/Kamdhenu or equivalent make of Fe 550 D TMT Bars or Equivalent make.
2. SUPER STRUCTURE: Earthquake Resistant Foundation with RCC framed structure to withstand wind & seismic loads by Ultratech RMC or equivalent make, Steel - TATA STEEL/JSW/VSP/SAIL/Jindal Panther/Kamdhenu or equivalent make of Fe 550 D TMT Bars with Mivan Shuttering or Equivalent make.



PLASTERING IN TYPICAL FLOORS

1. INTERNAL WALLS: Coarse Putty
2. CEILING: Buffing with Birla Putty
3. Designer Gypsum Board (Sain Gobain or Gyprock or equivalent make) False ceiling in common area with LED lightings (Havells, Luker, Casa or Syska or equivalent make)
4. EXTERNAL: Texture
5. BATHROOM: Bathroom grid ceiling with PVC sheet 2' X 2'



PAINTING

1. INTERNAL (Walls and Ceiling): 2 coats of waterproof Birla Wall care putty finish 1 coat of primer with 2 coats of Acrylic Plastic emulsion Asian paint or equivalent make.
2. EXTERNAL: Alltech Texture finish with 2 coats of weatherproof exterior emulsion Apex Ultima Asian paint or equivalent make
3. Other Areas Birla Wall care putty with Apex Ultima Asian paints.



JOINERY DOOR WORKS

1. 7 feet high Main door and internal doors
2. MAIN DOOR: Indian BT (Teak wood) frame Section of Size 5"X3" and High Quality - veneered door/shutter with melamine polishing and designer hardware of Stainless steel and Locks (Europa/Godrej or Dorset or equivalent make)
3. INTERNAL DOORS: Indian GMT or African (Teak Wood) frame section of size 4"X3" with designer flush doors of with two sides Veneer with melamine polishing and designer hardware of Stainless steel and Locks (Europa/Godrej or Dorset or equivalent make)
4. TOILETS: Indian GMT or African Teak wood frame section of 4"X3" and waterproof WPC shutter with one side veneer of the - and one side Laminate and designer hardware of Stainless steel and Locks (Europa/Godrej or Dorset or equivalent make)
5. BALCONIES & UTILITY: French doors- UPVC / Aluminium sliding door with glass with suitable finishes with provision for mosquito mesh.
6. WINDOWS: 2.5 track UPVC / Aluminium window systems with 5 mm Glass with mosquito mesh
7. GRILLS: Aesthetically designed bright steel safety grills for Windows and Mild Steel safety grills with Asian enamel paint finish/Glass railing for Balcony.



FLOORING

1. DRAWING, LIVING & DINNING: 800mm X 800mm or larger size vitrified GVT Tiles of Kajaria, Somany or RAK or equivalent make with 4" skirting.
2. ALL BEDROOMS: 800MM X 800 MM vitrified GVT Tiles of Kajaria, Somany or RAK or equivalent make with 4" skirting to be flush with wall.
3. BATHROOMS: 600MM X 1200MM / 600 MM X 600 MM Vitrified/Ceramic anti-skid, acid resistant tiles of Kajaria, Somany or RAK or equivalent make.
4. ALL LOBBIES AND STAIRCASE/CORRIDOR: Combination of Granite and Vitrified/GVT tiles as per Design
5. BALCONIES: 600 MM X 600 MM/200MM X 1200MM Rustic/Anti-skid, acid resistant ceramic tiles of Kajaria, Somany or RAK or equivalent make with 4" skirting to and above SS/Glass Railing with glass up to 4'.
6. UTILITY: Anti-skid, Acid resistant ceramic tiles of Kajaria, Somany or RAK or equivalent make with washing machine provision.
7. KITCHEN: GVT Tiles of Kajaria, Somany or RAK or equivalent make with 4" skirting.



DADOING

1. KITCHEN: 2 feet dadoing in kitchen above the granite platform (glazed /matt designer ceramic tiles of Kajaria, Somany or RAK or equivalent make)
2. TOILETS: Minimum of 600mm X 1200mm designer Anti-skid, Acid resistant ceramic tiles of Kajaria, Somany or RAK or equivalent make.
3. UTILITY, BALCONY AND WASH: Tile Dado up to 3' Height



KITCHEN

1. Polish Granite platform and superior stainless-steel sink with drain board
2. Provision for fixing R.O. system with separate water inlet & outlet
3. Separate taps for municipal water (Manjeera) and softened bore well water
4. Provision for fixing Exhaust fan or Chimney.



C.P. FITTING & SANITARY FITTINGS

1. All sanitary fixtures of superior Jaguar or Kohler or equivalent make.
2. Wall mounted EWC of Jaguar or Kohler or equivalent make with concealed flush tank of Grohe or equivalent make.
3. Single/Double lever diverter/quarter ton with wall mixer cum shower of Jaguar or Kohler or equivalent make.
4. Fully treated soft water, drinking water and STP treated water. (As per Architect)
5. All CP fittings are of superior quality and chrome plated of Jaguar or Kohler or equivalent make.
6. Provision for Geysers in all bathrooms
7. Wash basin with pillar cock in all Bathrooms



ELECTRICAL

1. Concealed copper wiring of Havells or Finolex or equivalent make and modular switches of Legrand - Myris or equivalent make.
2. Power outlets for air conditioners (All Bedrooms, Living, dining & drawing)
3. Telecom and Internet (Master Bedrooms, Drawing and Living)
4. Television DTH (Master Bedrooms, Drawing and Living)
5. Power of outlets for geysers and exhaust fans in all bathrooms
6. Chimney Exhaust & separate exhaust fan provision in kitchen
7. Power plug for cooking range chimney, refrigerator, microwave ovens, mixers/ grinders/ dishwasher in kitchen and washing machine in utility area.
8. Three phase power supply for each unit with individual meter boards.
9. Miniature Circuit Breakers (MCB) of Legrand or Schindler
10. Individual electrical meter provided for each apartment, club house and common area



TELECOM/INTERNET/DTH/DOOR MANAGEMENT/SECURITY

1. DTH, Telephone provision for any one operator
2. Legrand/Matrix Brand Intercom Provision with the community, clubhouse & all the flats
3. Wi-Fi internet Provision in clubhouse
4. Sophisticated round the clock security system
5. Surveillance cameras of high resolution with motion sensor at the main security gate, entrance and exit points of the tower, clubhouse and common amenities, lifts, parking, cellar, and ground floor
6. Separate Boom barriers at Entry & Exit for vehicle with automatic operation for Residential Tower



LIFTS

1. Lifts in residential tower Mitsubishi or Schindler or Equivalent make High speed automatic stainless steel commercial passenger lifts of 13-16 people capacity and aesthetic looks (interior & exterior)



PARKING

1. VDF flooring in cellar and driveways.
2. Well designed parking
3. Provision of parking/signages at required place for ease of driving



STP

1. Sewage treatment plant provided
2. Treated sewage water will be used for landscaping and flushing



CAR WASH FACILITY

1. Provision for car wash facility at cellar parking area



GENERATOR

1. 100% DG set backup with acoustic enclosure & AMF panel provided for each flat (excluding A/C's & Geysers) and common areas



WASTE MANAGEMENT

1. Space for separate bin to collect dry waste (paper, plastic, glass and metals), e-waste (batteries, lamps) and wet waste (organic)



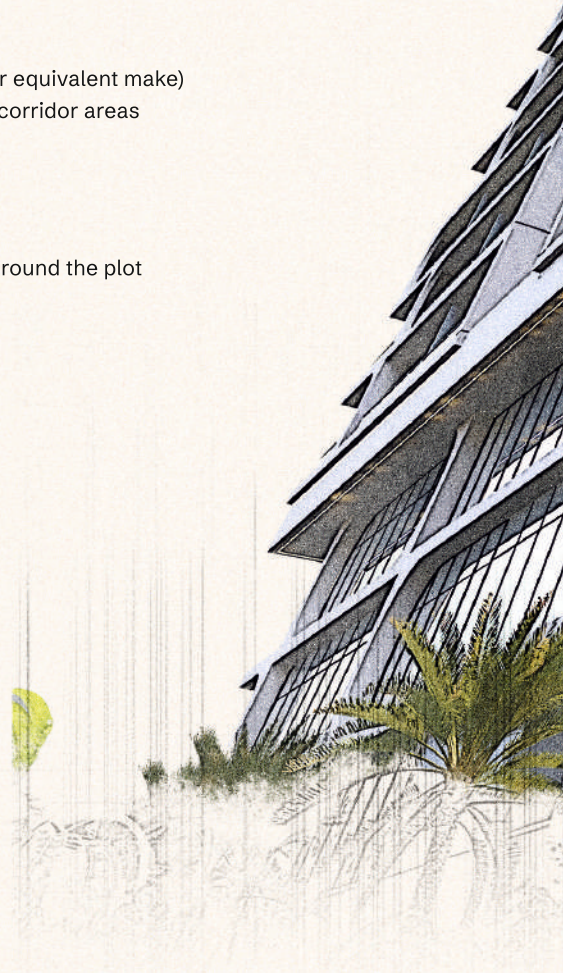
EXTERNAL & COMMON AREA LIGHTING

1. Light posts with Solar panels and LED lights (Havells, Luker, Casa or Syska or equivalent make) fittings in setback and landscaping areas and sufficient lights in staircase & corridor areas



COMPOUND WALL

1. Aesthetically designed compound walls per vastu shall be constructed all-round the plot with solar fencing above it.







JAINS RADHAKRISHNA Bliss

Site Office Address

📍 Survey No. 5/2 part, Ward No. 3, Block No. 2,
L.B.Nagar Municipality, adjacent to HUDA Colony and
Jangaiah Colony, Bahadurguda Village, Saroornagar Mandal,
Ranga Reddy District, Telangana.

Main Office Address

📍 Flat No 202, 2nd floor, Anushka Trenz, Road No. 14,
Banjara Hills, Hyderabad, Telangana 500034

 Jainconstructions.com