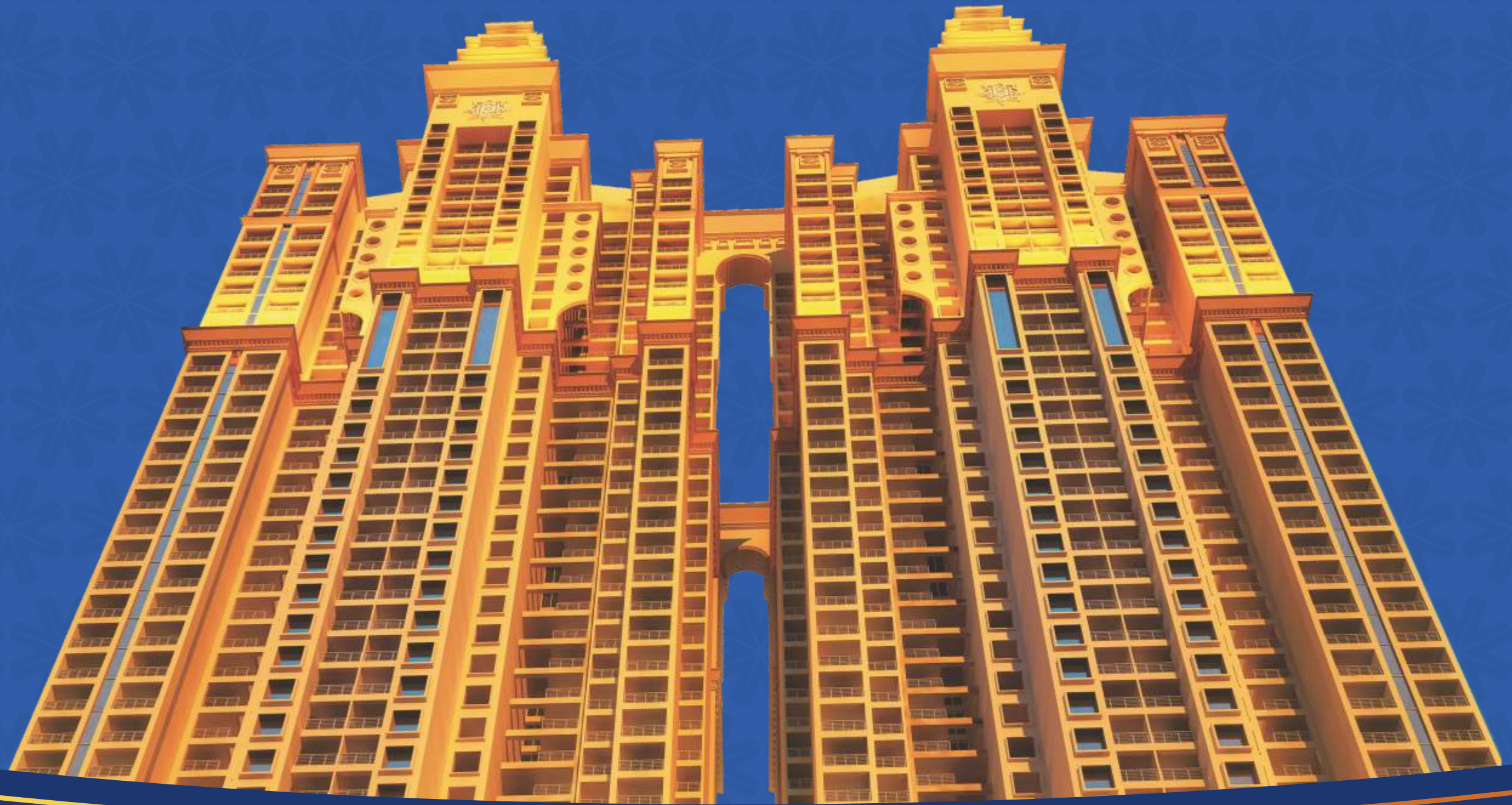


ARIHANT CLAN AALISHAN — KHARGHAR —

BIG-SIZED STUDIO, 1, 2 & 3 BHK RESIDENCES



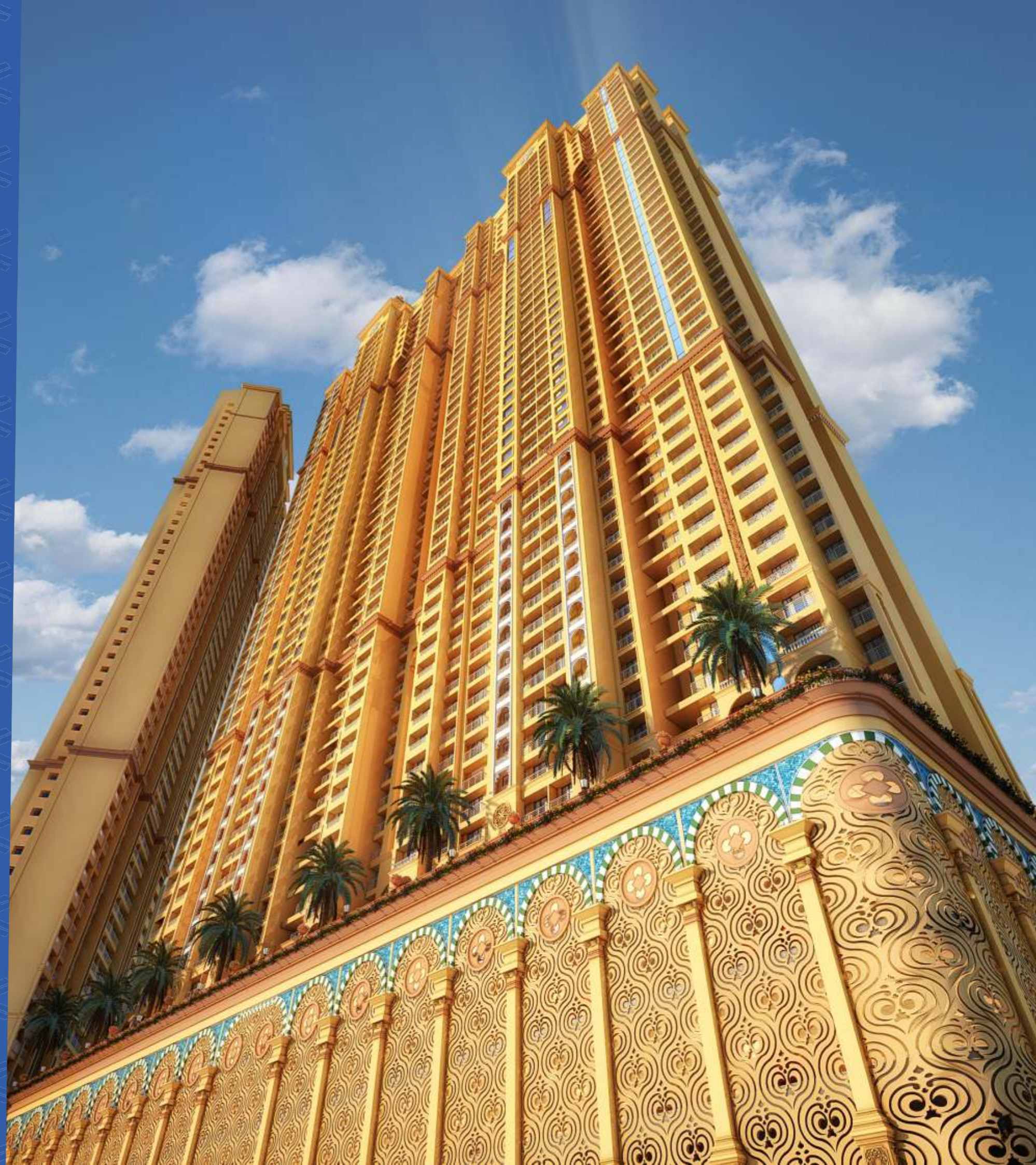
 *A Lifestyle Project*

WELCOME TO AN ADDRESS INSPIRED BY PERSIAN ARCHITECTURE

Soon to become the tallest towers in Navi Mumbai.

Persian-style architecture instantly invokes an image of royalty, luxury and nobility. Most of us dream to live an ultramodern lifestyle replete with luxuries, but only a few actually own it. Persian-style living at 'Arihant Clan Aalishan' is symbolic to the art of unparalleled luxury at the heart of royalty. Situated near Kharghar Valley Golf Course, Proposed Navi Mumbai Corporate Park & Central Park, The Project features a host of regal indulgences inspired by the glorious Persian nobility.

WELCOME TO A GRAND LIFE. THE AALISHAN LIFE.

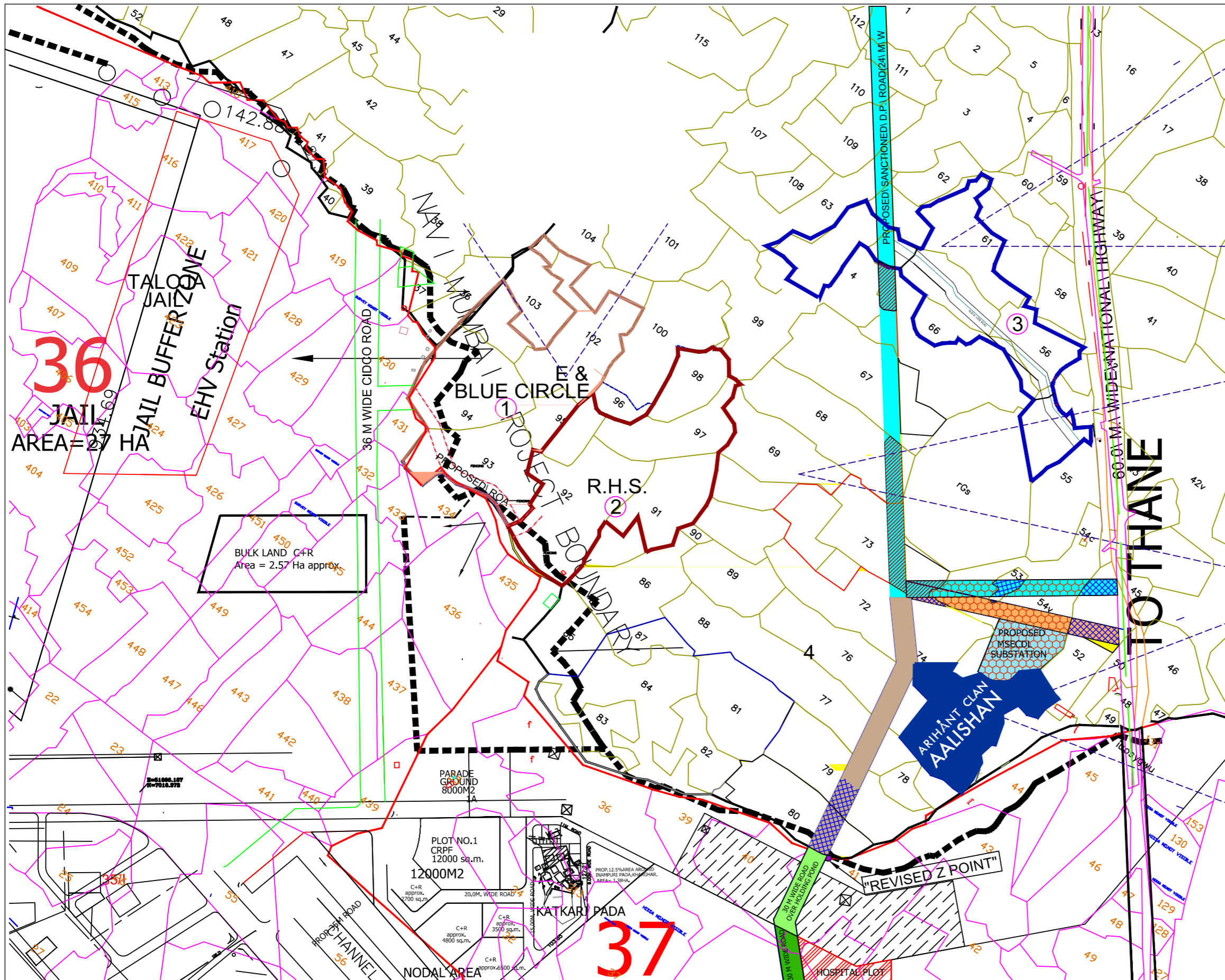




BARAZ 1 & 2 - 2 TOWERS OF 53 STOREYS

KAVEH - 37 STOREY TOWER

ZEENAT - 51 STOREY TOWER



- 1) Total Water Demand
1.92 MLD
- 2) Total Drainage Out flow
1.719 MLD
- 3) Total Storm Water Outflow
6600 m/hr
- 4) Electrical load
Connected load = 42.00 MW
Demand load = 19.50 MW
- 5) Waste Management
Dry Waste = 4153.60 kg/day
Wet Waste = 6230.40 kg/day

- 1) Total Water Demand
4.214 MLD
- 2) Total Drainage Out flow
3.685 MLD
- 3) Total Storm Water Outflow
131241.16 m/hr
- 4) Electrical load
Connected load = 40.99 MW
Demand load = 32.79 MW
- 5) Waste Management
Dry Waste = 6303.00 kg/day
Wet Waste = 14616.00 kg/day

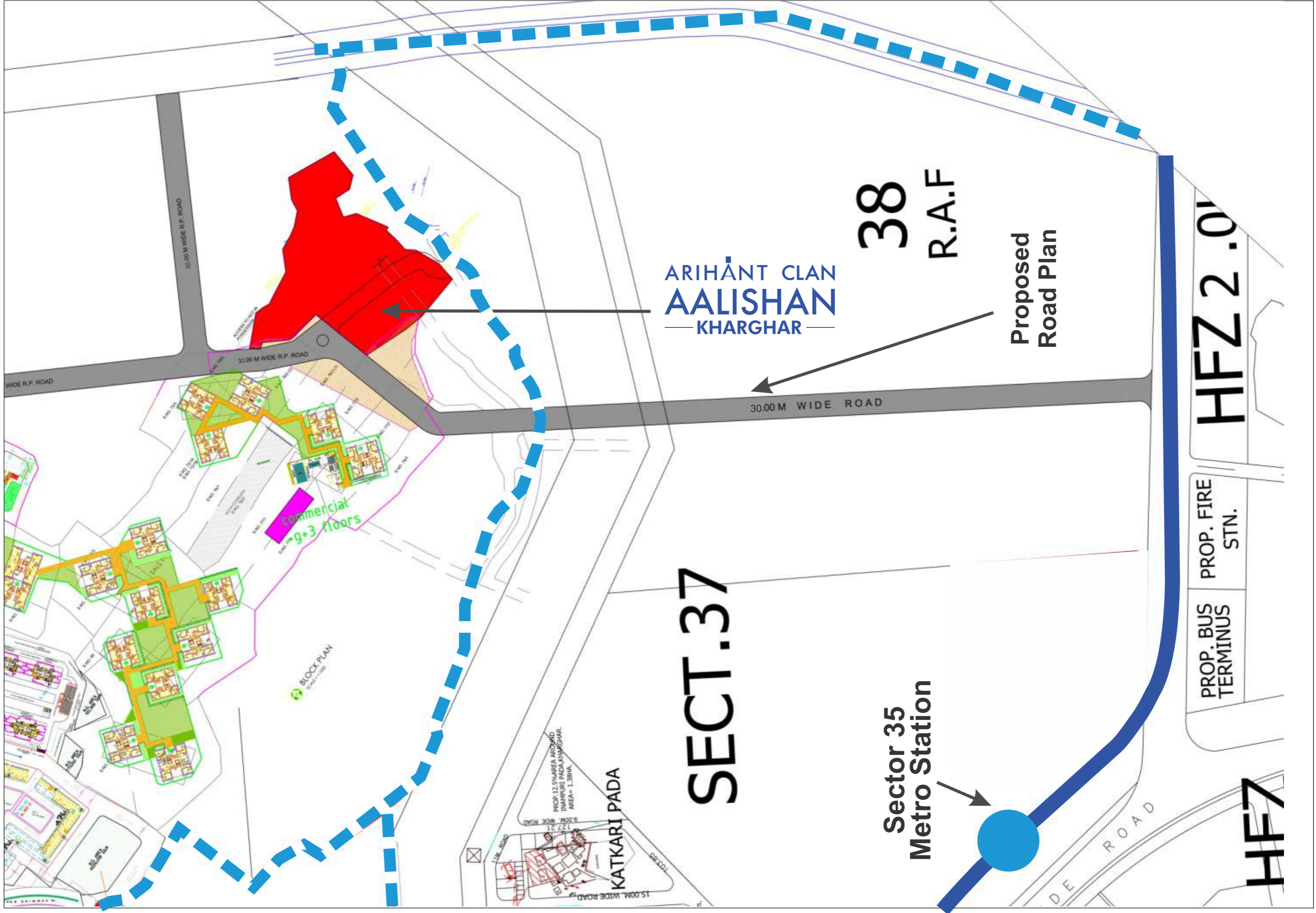
- 1) Total Water Demand
0.928 MLD
- 2) Total Drainage Out flow
0.789 MLD
- 3) Total Storm Water Outflow
4238.00 m/hr
- 4) Electrical load
Connected load = 14.48 MW
Demand load = 5.21 MW
- 5) Waste Management
Dry Waste = 1350.20 kg/day
Wet Waste = 2025.30 kg/day

LEGEND:-



**ARIHANT CLAN
AALISHAN**

- | | | | |
|---|----------------------------------|----------------------------------|---------------------------------|
| SANCTIONED D.P. ROAD (24 M WIDE) | HOSPITAL PLOT | REVISED Z POINT | LAND TO BE ACQUIRED (TRUST) |
| EXTENDED D.P. ROAD | CIDCO ROAD 30 M WIDE | 30 M WIDE ROAD OVER HOLDING POND | LAND TO BE ACQUIRED (PRIVATE) |
| REVISED ALIGNMENT OF SANCTIONED D.P. ROAD | PROPOSED MSEC DL SUBSTATION LAND | HOLDING POND | LAND TO BE ACQUIRED (GURCHARAN) |



ARIHANT CLAN
AALISHAN
— KHARGHAR —

38
R.A.F

Proposed
Road Plan

30.00 M WIDE ROAD

SECT.37

Sector 35
Metro Station

HFZ 2.0

PROP. FIRE
STN.
PROP. BUS
TERMINUS

HF7

30.00 M WIDE R.P. ROAD

30.00 M WIDE R.P. ROAD

WIDE R.P. ROAD

commercial
~9+3 floors

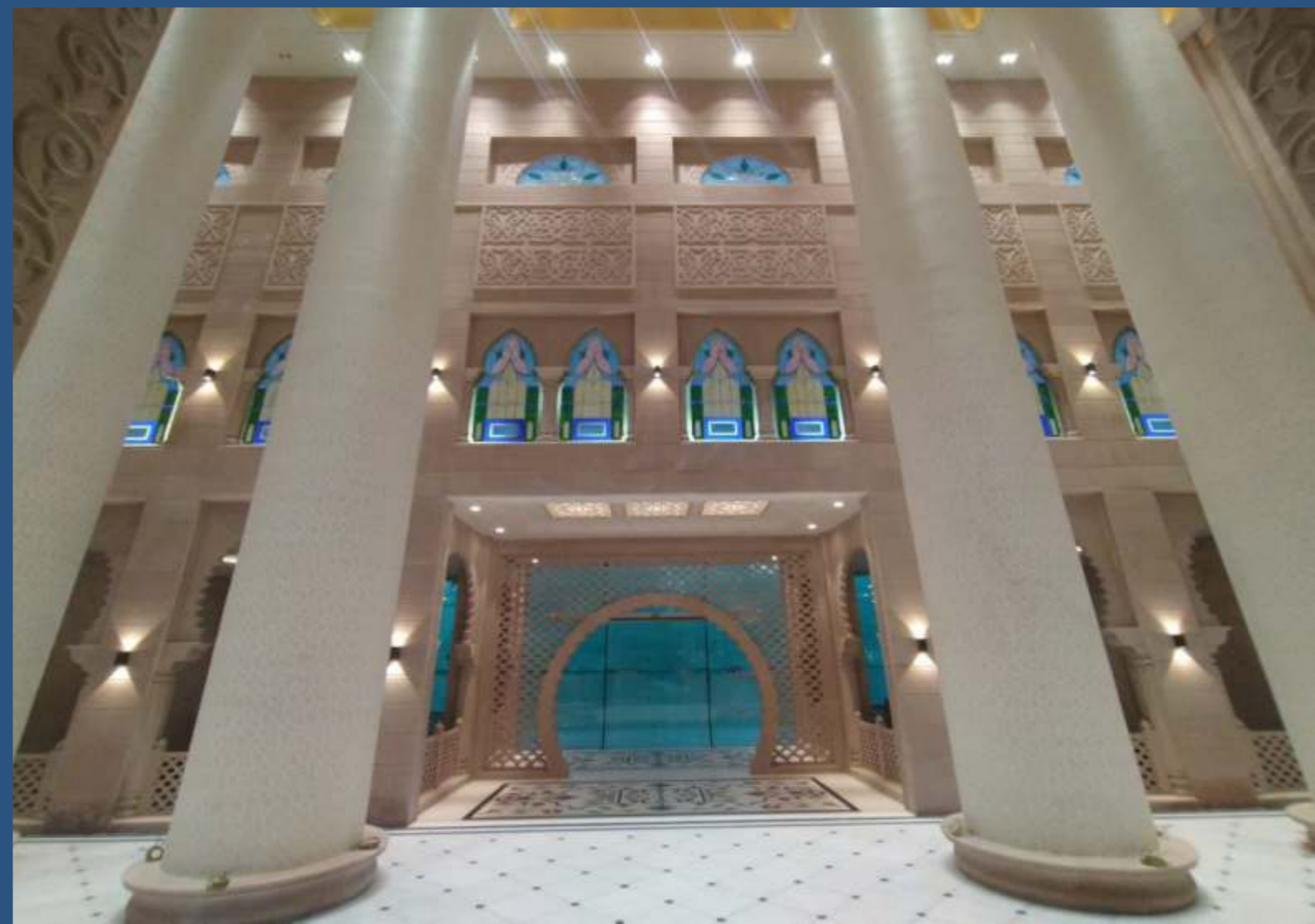
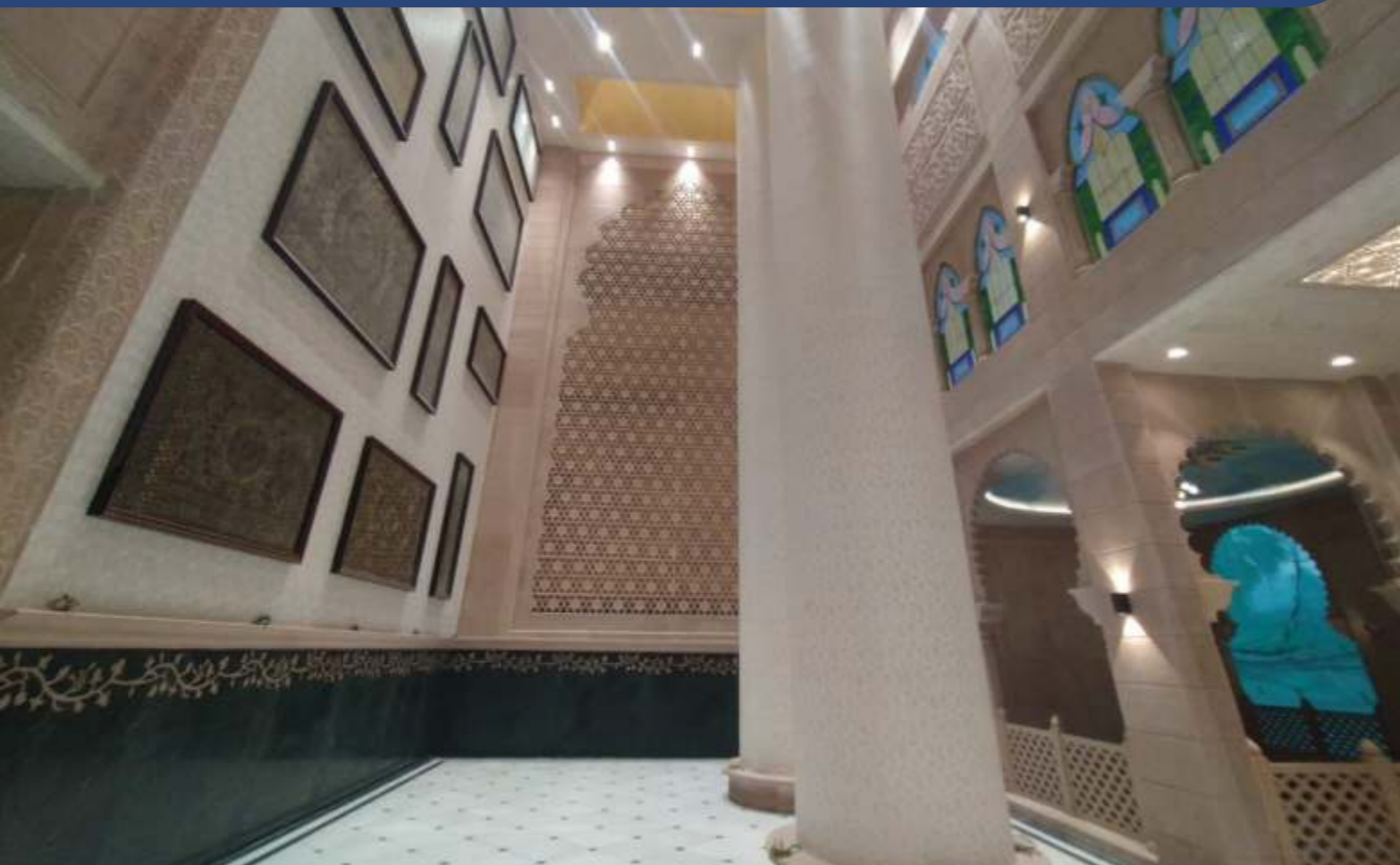
BLOCK PLAN

KATKARI PADA

PROP. 12 SIKHARA ARCHITECT
THAKURJI PADA, KHARGHAR.
AREA = 1.38HA.
3.00M. WIDE ROAD

DE ROAD

AAYAT - ROYAL ENTRANCE LOBBY (Actual images)



KOLUP - GRAND CLUBHOUSE



PAIRI DAEZA - LANDSCAPED GARDEN

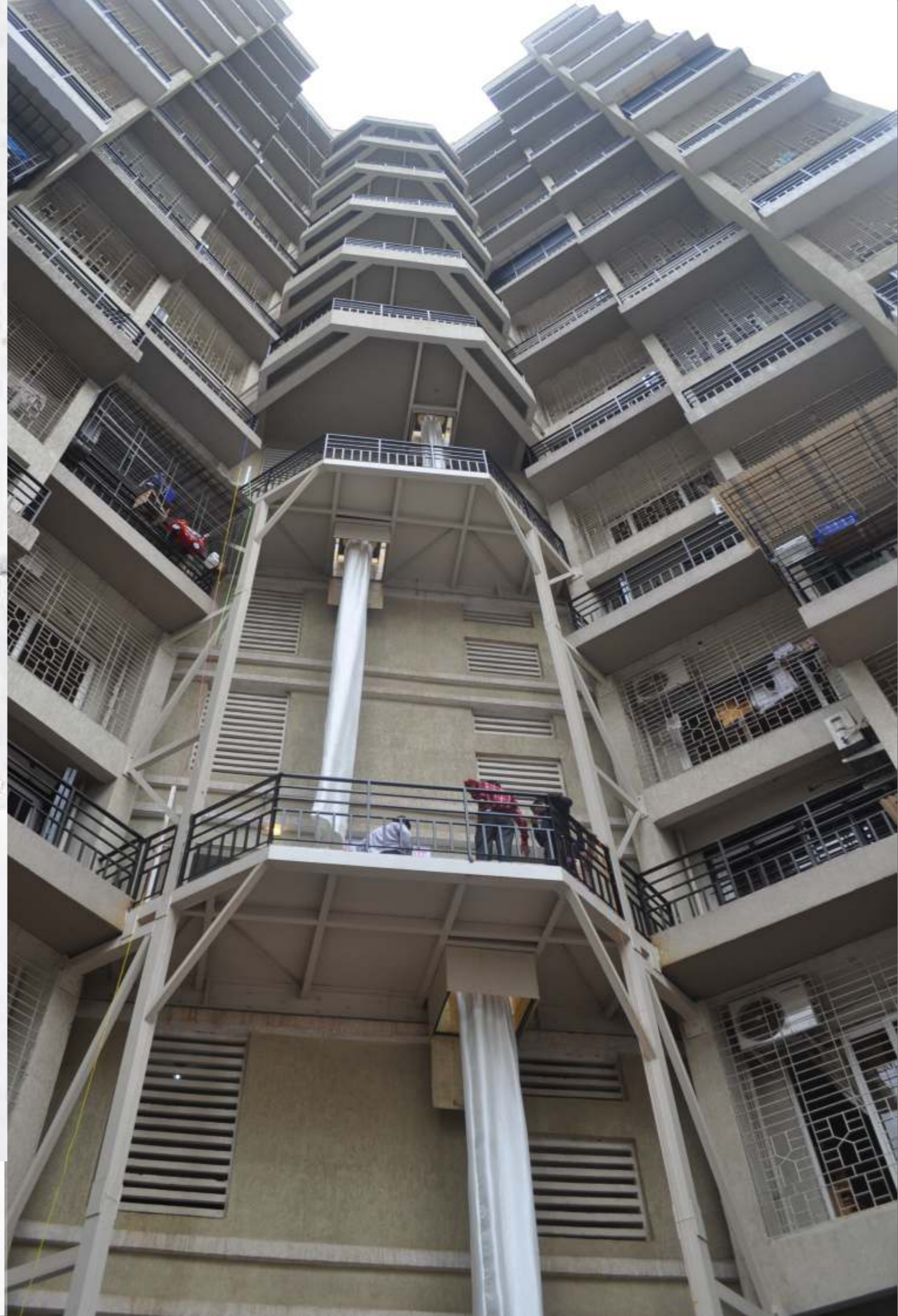
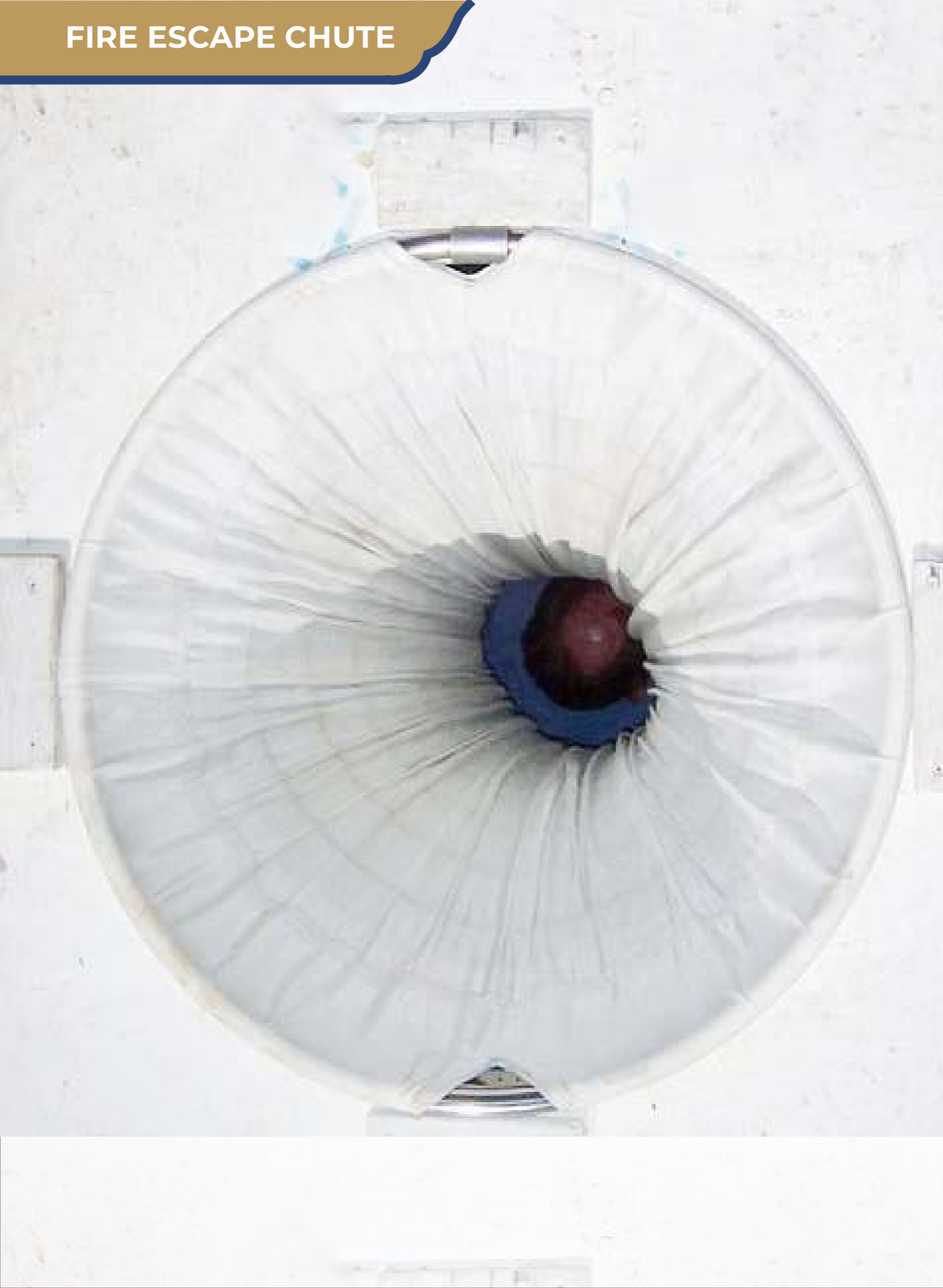








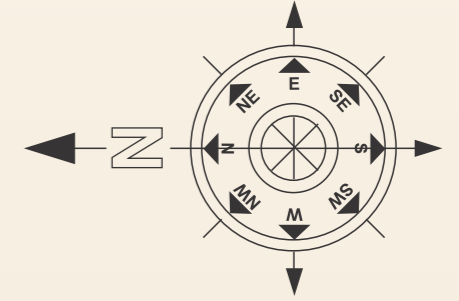
FIRE ESCAPE CHUTE



BUS DUCT SYSTEM

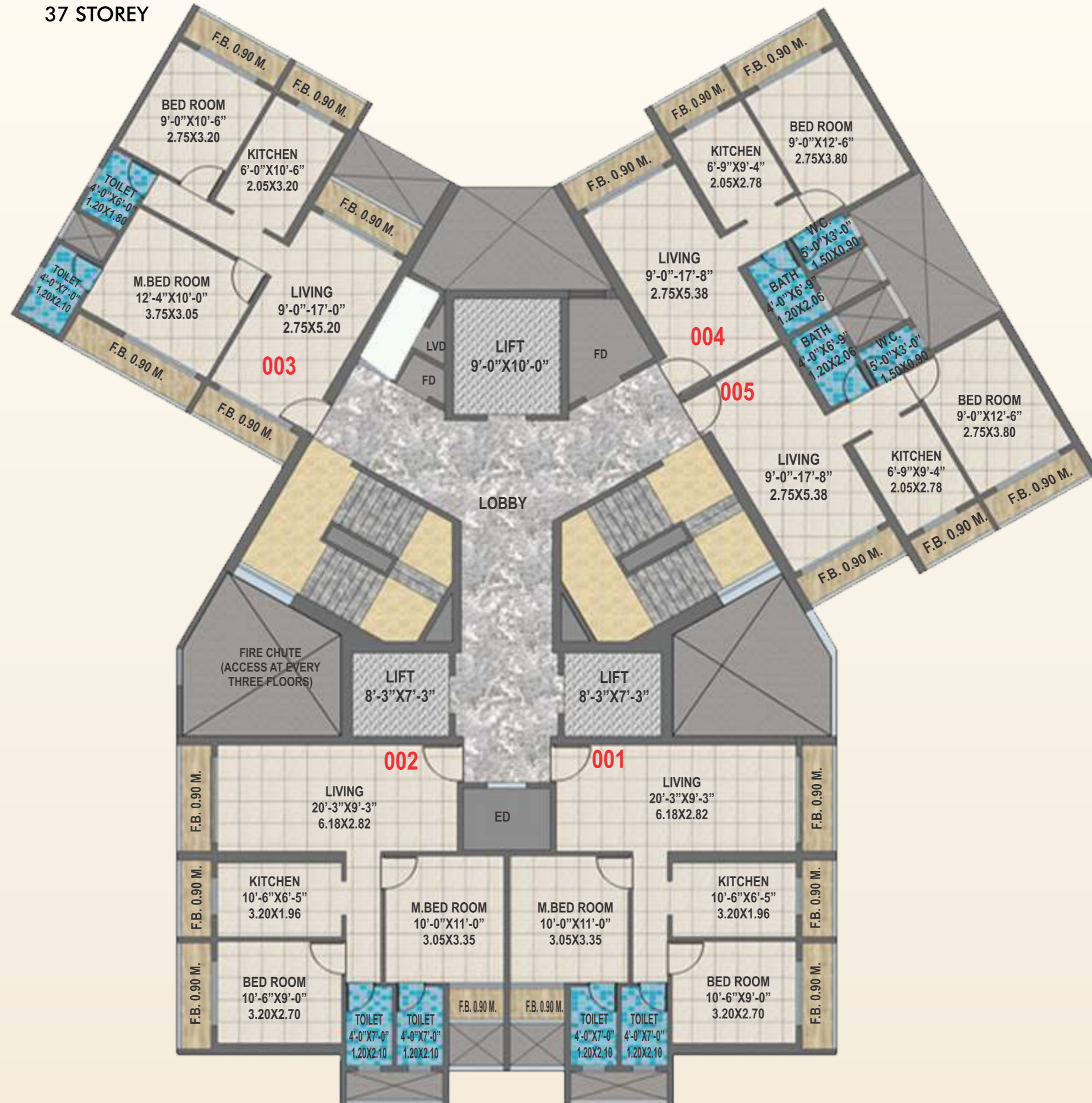


MASTER LAYOUT



TYPICAL FLOOR PLAN - KAVEH

37 STOREY

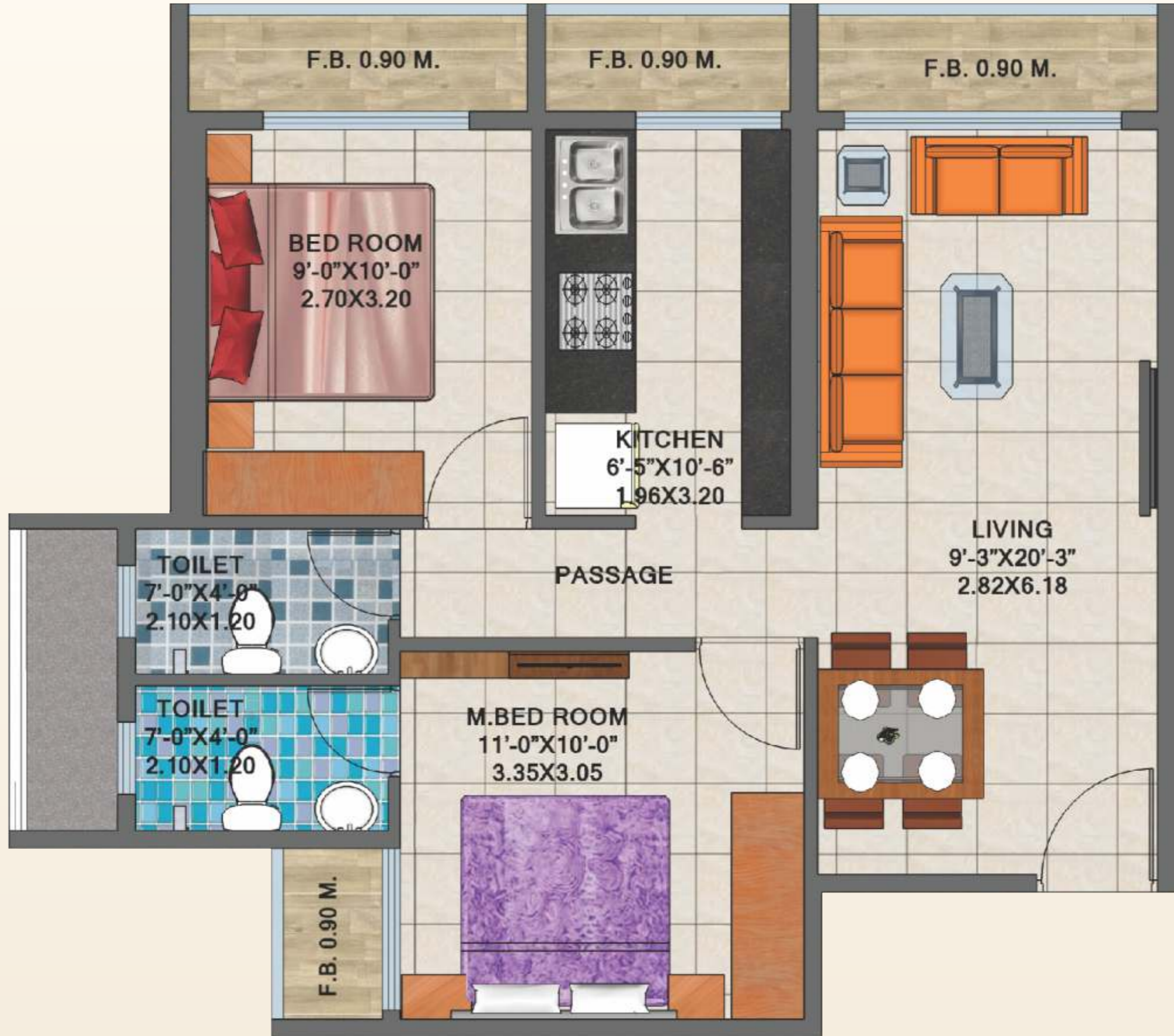


1 BHK UNIT PLAN



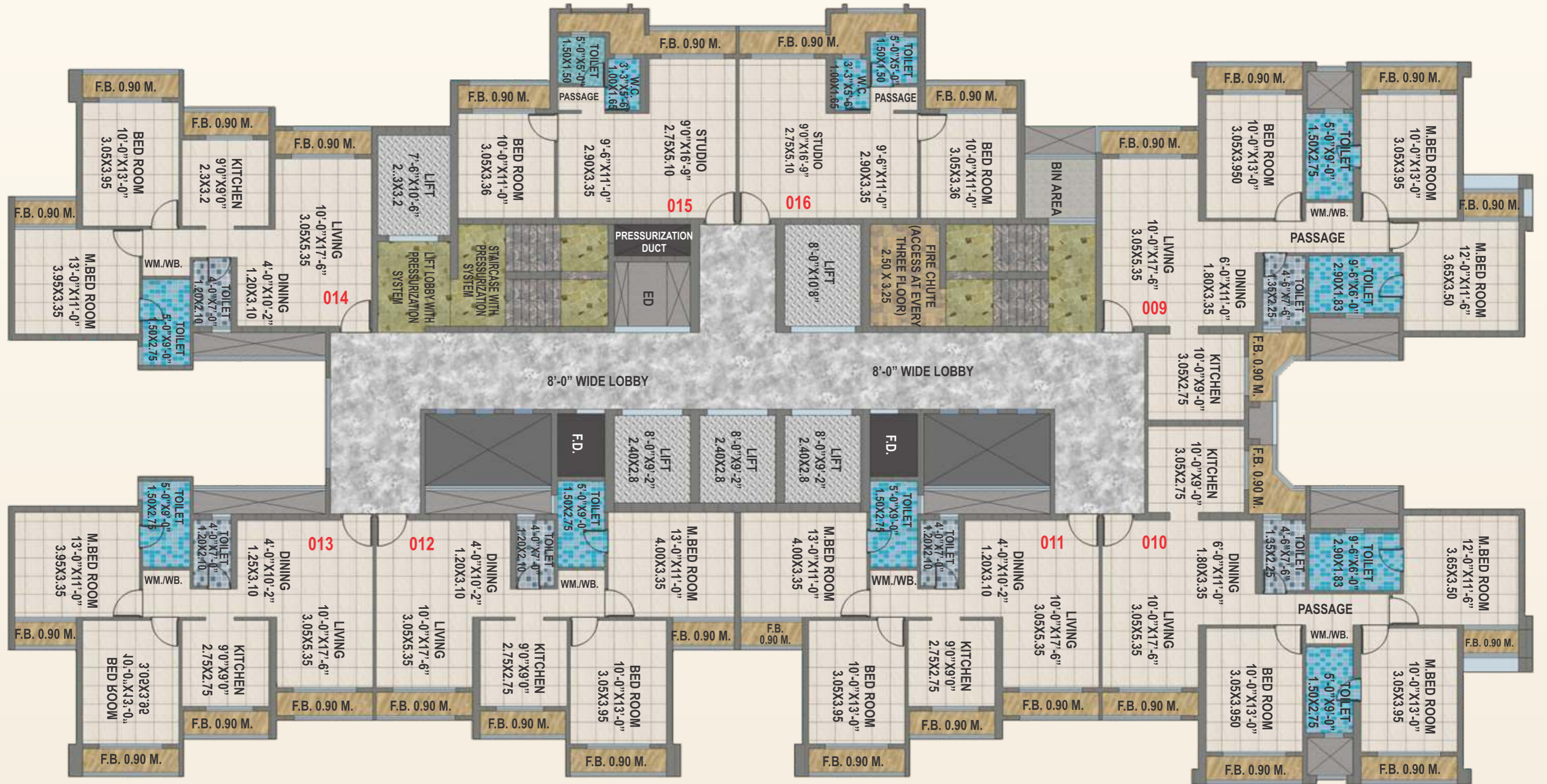
2 BHK UNIT PLAN

TYPE 2



TYPICAL FLOOR PLAN - BARAZ 2

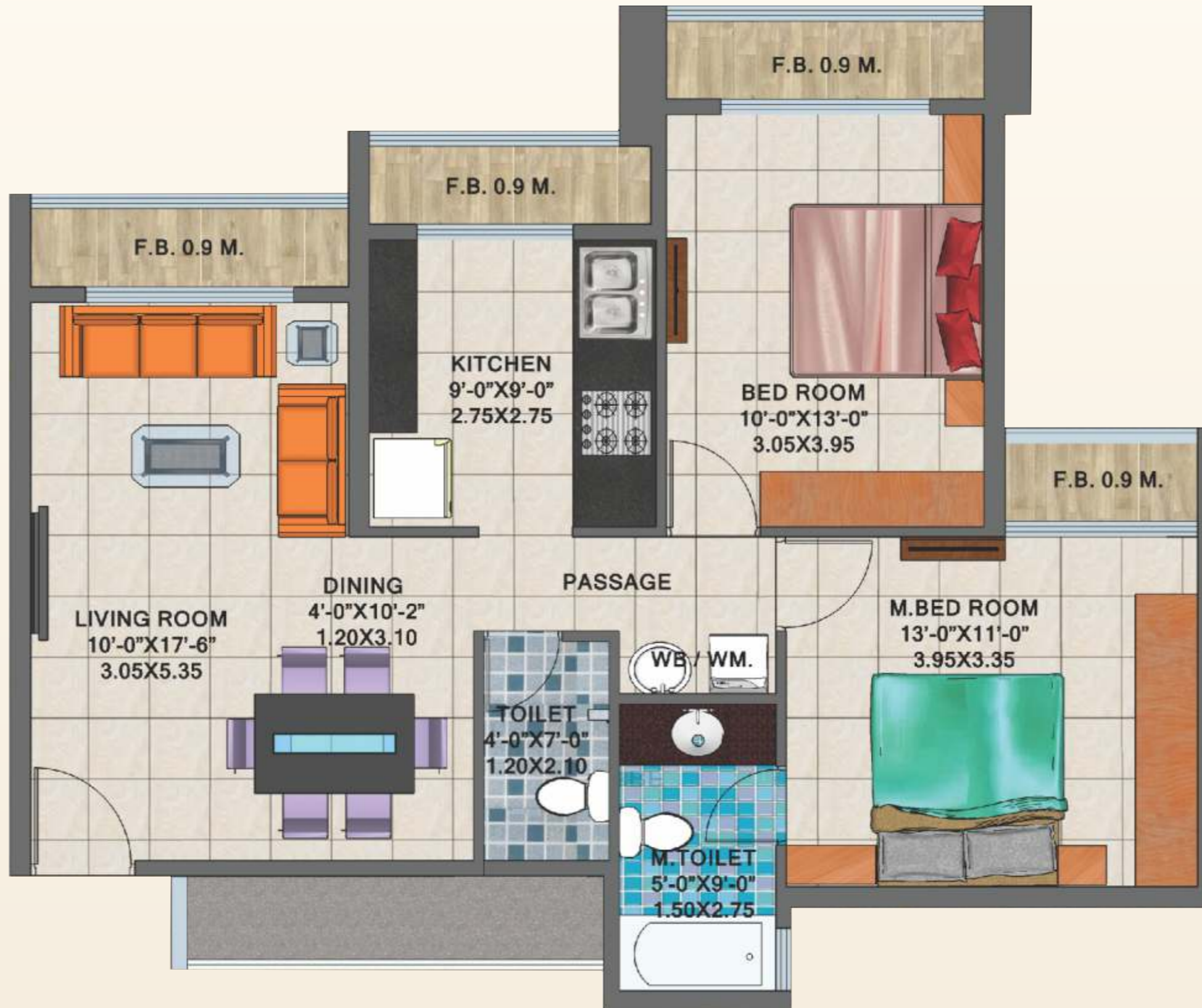
53 STOREY



STUDIO UNIT PLAN



2 BHK UNIT PLAN



3 BHK UNIT PLAN



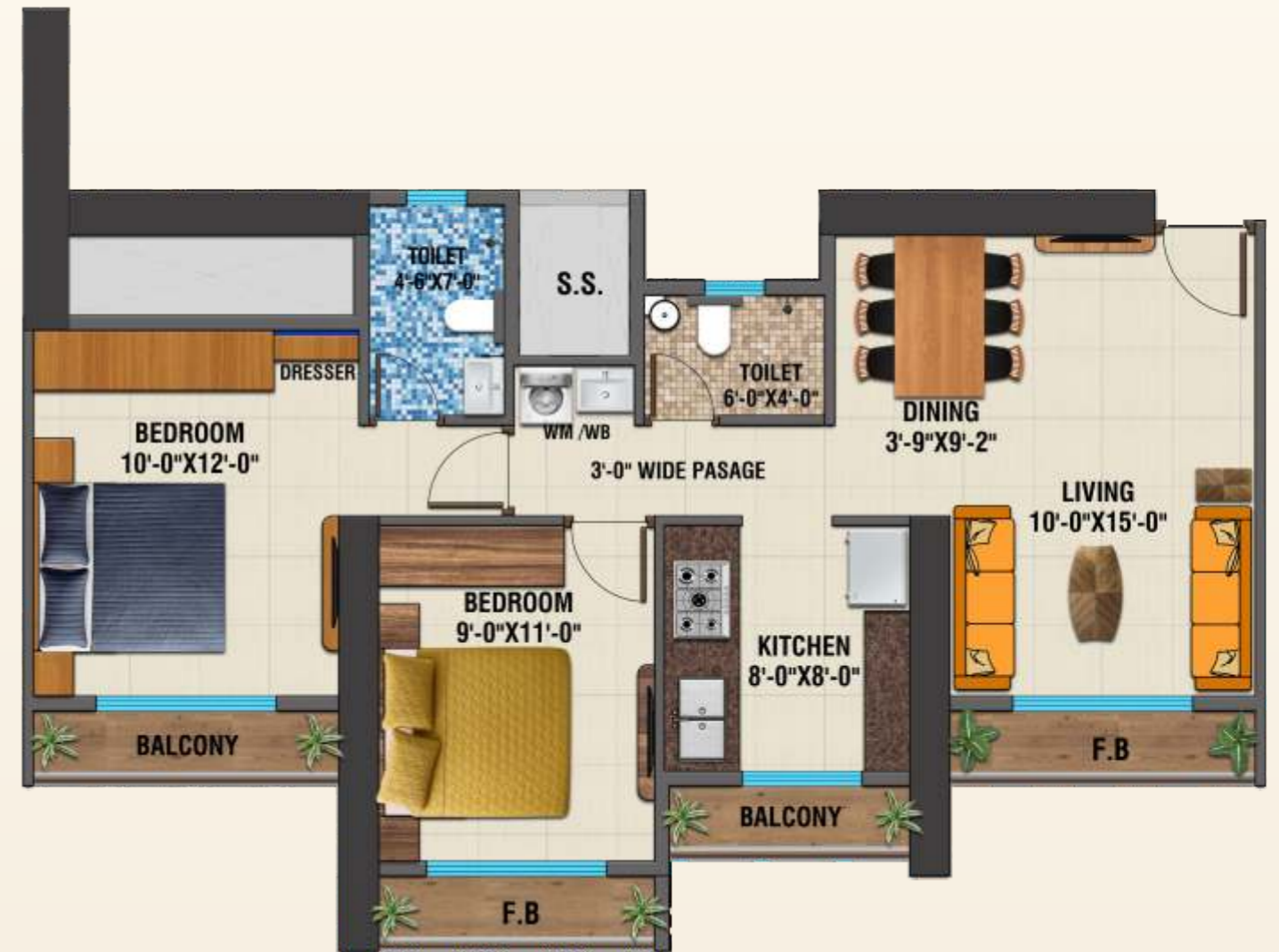
2 BHK UNIT PLAN TYPE 1

EVEN FLOORS



2 BHK UNIT PLAN TYPE 2

ODD FLOORS



3 BHK UNIT PLAN TYPE 1

EVEN FLOORS



3 BHK UNIT PLAN TYPE 2

ODD FLOORS



LOCATION ADVANTAGES



Kharghar railway station at short distance



Kharghar Sector 35 & Metro Station - 0.5 kms



Close to Upcoming Navi Mumbai Corporate Park



Very near to Central Park



Kharghar Golf Course Nearby



Utsav Chowk & Shilp Chowk Close by



Connected to Mumbai-Pune Expressway



International Football Stadium Near by



Banks , ATMs, Markets Malls & Multiplexes few mins away



Temples Gurudwara



Educational Institutes at Kharghar

- NMIMS University • ITM Business School
- Ramsheth thakur college • PILLAY's College
- National Institute of Fashion Technology
- Bharati vidyapeeth engineering institute
- Empyrean School • Vibgyor International School
- DAV International school • Apeejay School
- Ryan International school



Hospitals, Healthcare units at Kharghar

- Tata Memorial Hospital
- Geo Medcare Multispecialty Hospital
- Motherhood Hospital
- MITR Hospital • Polaris Hospital
- Sanjeevan Hospital
- Niramaya Hospital