



MahaRera Registration No: **P52100056436** | Website: [maharera.mahaonline.gov.in](http://maharera.mahaonline.gov.in).

**Site Address:** Silver Meteor, Aundh – Ravet BRTS Rd, Ram Nagar, Tathawade, Pune, PCMC – 411033

[www.silvermeteor.co.in](http://www.silvermeteor.co.in)



SILVER  
METEOR

ULTRA-MODERN 2, 3 & 4 BHK RESIDENCES  
TATHAWADE



CHOOSE PCMC 'S  
MOST DESIRABLE  
ADDRESS

---

Off Aundh-Ravet BRTS Road, Tathawade



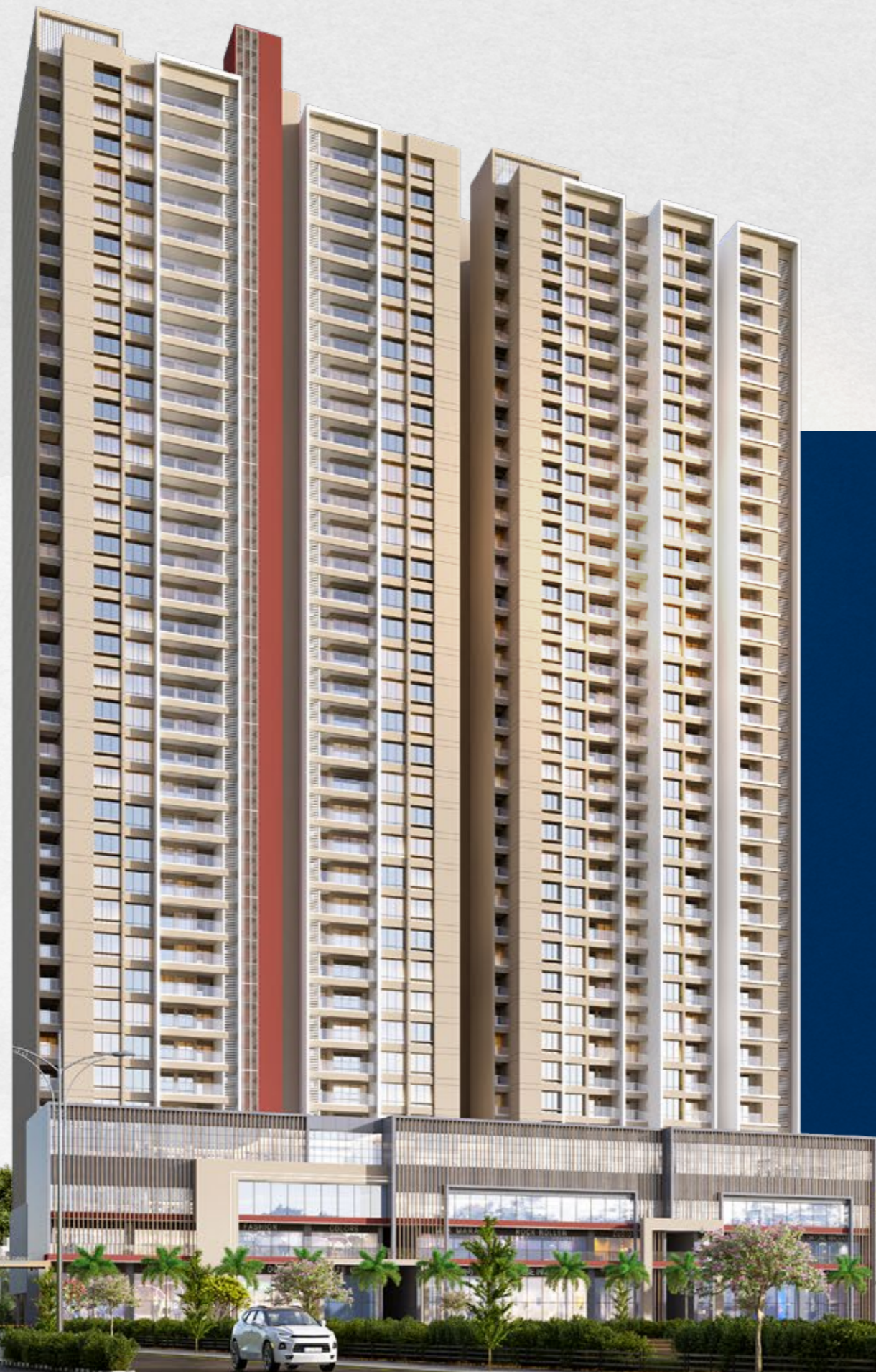


— Step In The —  
**SPOTLIGHT**

Picture a life where the world revolves around 'you'.

Where your day begins with a royal treatment and every evening feels like the star-studded premiere of your lifestyle!

Welcome to **Silver Meteor**, an ultra-luxury haven in Tathawade, Pune, where your dreams of living like a celebrity becomes a reality. Embrace a world where sophistication, style, and grandeur define your everyday experience.



ARTIST IMPRESSION

Live The  
**RED  
CARPET**



# LIFESTYLE

At **Silver Meteor**, the red carpet is rolled out for you every day with a touch of glamour and glitz.

From its resort-like amenities to its prime location and opulent residences, Silver Meteor offers a lifestyle exclusively crafted for those who dream of living like a celebrity.

The Sterling

# SKYSCRAPERS





ARTIST IMPRESSION

Towering high is the **36-storey** skyscraper that makes a mark on Pune's skyline.

Striking features, state-of-the-art architecture, a grand lobby that makes every arrival feel like a red-carpet entry, and boundless lush green views all come together to compose a symphony of exuberance.



**Double-height Entrance Lobby**



**Water Feature At The Entrance**



**Grand Drop-off Pathway**



# Life At The CENTRE STAGE

In the world of luxury, where you choose to live is everything—and Silver Meteor places you at the pinnacle of Pune's prime addresses. Nestled in **Tathawade**, a fast-growing, vibrant locale that balances urban sophistication with serene retreat, this project offers you unmatched access to the city's finest.

All of Pune's desirable destinations, a short drive away



## CONNECTIVITY

- Dange Chowk - 200 m
- Wakad - 1.5 km
- Bhumkar Chowk - 2 km
- Ravet - 2.5 km
- Mumbai - Pune Highway - 3 km
- Baner - 9.2 km
- Aundh - 11.3 km



## WORK

- Eon IT Park - 2.5 km
- Hinjawadi IT Park - 5 km
- Infosys - 6 km
- Persistent Systems - 6.4 km
- Tech Mahindra - 7.8 km
- Wipro Technologies Ltd. - 8.9 km



## SCHOOLS

- ORCHIDS The International School - 200 m
- Dr. D. Y. Patil B-school - 2.9 km
- Podar International School - 3.3 km
- Indira National School - 3.8 km
- Akshara International School - 4.2 km
- City Pride School - 5.9 km
- Elpro International School - 6.3 km



## COLLEGES

- Balaji Law College - 400 m
- Balaji Institute of Management - 2 km
- JSPM - 2.1 km
- DY Patil College - 3 km
- Indira Institute of Management - 3.5 km



## HOSPITALS

- Pulse Hospital - 800 m
- Aditya Birla Hospital - 2.5 km
- Lifepoint Hospital - 4.5 km
- Lifecare Multispeciality Hospital - 7.9 km



## HOTELS AND RESTAURANTS

- Casa De Silver - 0 km
- Ginger Hotel - 2 km
- Sayaji Hotel - 3 km
- Hotel TipTop International - 4 km

A woman with long, wavy brown hair is standing on a rooftop, looking towards the camera. She is wearing a shimmering, silver sequined, sleeveless dress with a high slit on the left side. She is also wearing large, ornate gold earrings, a red bracelet on her right wrist, and a silver bracelet on her left wrist. The background shows a cityscape at sunset, with a clear blue sky transitioning to a warm orange and pink glow. The text 'A World Of GLAMOUR' is overlaid on the image. 'A World Of' is in a smaller, black, sans-serif font, and 'GLAMOUR' is in a large, white, serif font. A thin vertical line is positioned to the left of the word 'World'.

A  
World Of  
GLAMOUR



ARTIST IMPRESSION

What sets you apart from the ordinary? The choices you make to live 'extraordinary'!  
At Silver Meteor, a careful curation of **50+ lifestyle amenities** makes it so that any choice you make is beyond compare. Whether it's a cocktail party or an intimate dinner with close friends, the amenities at Silver Meteor make every moment worth featuring a Page 3 edition.

**CLUBHOUSE AREA G+2: 6000 Sq.ft.**

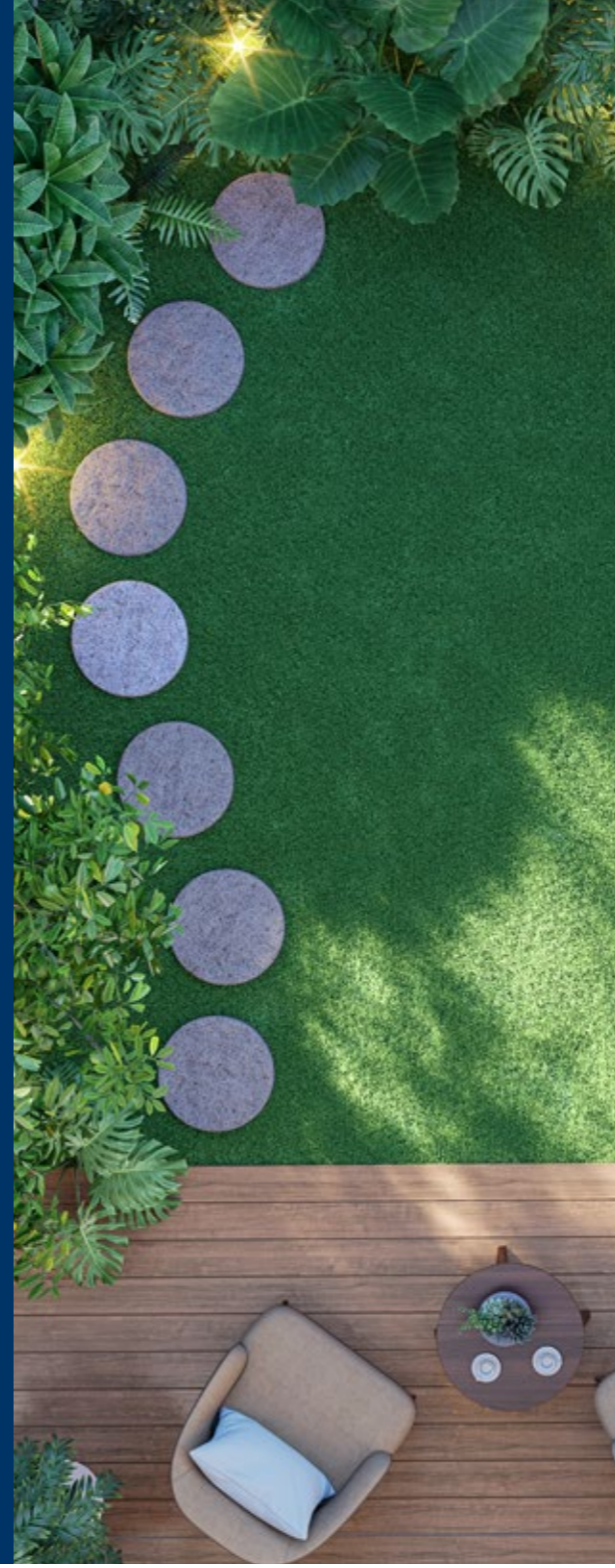


ARTIST IMPRESSION

**SWIMMING POOL AREA: 1130 Sq.ft.**



**OPEN SPACE AREA: 13974 Sq.ft.**



**PARKING SIZE: 2.40m x 4.50m**



IMAGES FOR REPRESENTATION PURPOSE ONLY



ARTIST IMPRESSION



50+ Modern Amenities



Two Levels Of Indulgences



Curation of Themed Gardens



Swimming Pool & Pool Deck



Badminton Court, Games Area



Multiple Party Lawns





## OPEN SPACE AMENITIES



Amphitheater



Senior Citizen Area



Meditation & Yoga Center



Aroma Garden



Jogging Track



Temple



Gazebo Pergola Seating



Badminton Court



Children Play Area



Party Lawn



Fountain Cascade



Sandpit For Kids

## PODIUM LEVEL AMENITIES



Coworking Space & Wifi Zone



Library



Swimming Pool With Pool Deck



Clubhouse



Indoor Game Room



Multipurpose Hall



Gymnasium



Viewing Deck



Trendsetter  
**ICONIC** Residences



Images for Representation Purpose Only



Your home is your autobiography. The **plush 2, 2.5, 3, and 4 BHK residences** are designed for those who value the finer things in life. With a keen eye for detail, each residence emanates sophistication, featuring premium finishes, expansive layouts, and breathtaking **panoramic views** of the city. Unfold your story of a star-studded life, right in your residence.



## STRUCTURE

---

- Earthquake resistant RCC framed structure
- Mivan Construction



## WINDOW

---

- All windows with granite frame
- Window UPVC coated tree track
- Glass louvres in bathroom windows
- Stainless steel railing with toughened glass in balconies



## FLOORING

---

- 800 mm X 1600 mm vitrified tiles
- Anti-skid tiles in bathrooms, balconies, terrace and dry balcony



## DOOR

---

- Laminated flush doors and frame for main door and bedrooms
- Granite frame in bathroom and balcony doors
- Mortise lock and handle for bedroom and bathroom doors
- Main door with biometric lock with access via key, password and fingerprint (Make - Yale/Godrej/Europa or equivalent)
- Video door phone



## BATHROOMS

---

- Premium C.P. fittings (Make - Grohe or equivalent)
- Premium Sanitary fittings (Make - American Standard/Tofo or equivalent)
- Acrylic false ceiling Exhaust fans
- Half glass partition in common bathroom
- Bathroom wall tiles- 600 X 1200
- Solar water provision



IMAGES FOR REPRESENTATION PURPOSE ONLY



## ELECTRICAL AND CABLING

- Provision for inverter
- Concealed copper wiring (Make - Polycab/Finolex or equivalent)
- Modular switches and sockets (Make - Legrand/Schneider or equivalent)
- AC Core Cutting
- Electrical points for boilers in all washrooms
- Fan Rods



## COMMON AREAS

- Provision for EV Charging Point in every parking
- 3 Tier security with access control for lobbies
- CCTV surveillance in common areas
- Rainwater harvesting
- STP as per statutory norms



## ELEVATORS

- Automatic full SS elevators with 24 hour power backup [Make - Kone/Otis/Schindler/ Thyssenkrupp or equivalent)
- 1 stretcher lift in each tower



## PLASTER

- Gypsum finished internal



## PAINT

- Internal Walls - Acrylic emulsion paint (Make - Asian/Berger or equivalent)
- External Walls - Weather shield acrylic paint (Make - Asian/Berger or equivalent)



# MASTER LAYOUT



# WING - A

## Typical Floor Plan

5th, 6th, 8th to 11th, 13th to 16th, 18th to 21st,  
23rd to 26th, 28th to 31st, 33rd to 36th



FLAT NO.	TYPE	CARPET	DRY BALCONY	BALCONY	TOTAL CARPET	
		(SQ.M.)	(SQ.M.)	(SQ.M.)	(SQ.M.)	(SQ.FT.)
501,601,801,901,1001,1101,1301,1401,1501,1601,1801,1901,2001,2101,2301,2401,2501,2601,2801,2901,3001,3101,3301,3401,3501,3601,502,602,802,902,1002,1102,1302,1402,1502,1602,1802,1902,2002,2102,2302,2402,2502,2602,2802,2902,3002,3102,3302,3402,3502,3602	4 BHK - 2	106.09	3.43	12.23	121.75	1311

FLAT NO.	TYPE	CARPET	DRY BALCONY	BALCONY	TOTAL CARPET	
		(SQ.M.)	(SQ.M.)	(SQ.M.)	(SQ.M.)	(SQ.FT.)
503,603,803,903,1003,1103,1303,1403,1503,1603,1803,1903,2003,2103,2303,2403,2503,2603,2803,2903,3003,3103,3303,3403,3503,3603,504,604,804,904,1004,1104,1304,1404,1504,1604,1804,1904,2004,2104,2304,2404,2504,2604,2804,2904,3004,3104,3304,3404,3504,3604.	4 BHK - 1	127.81	3.43	21.54	152.78	1645

# WING - A

## Refuge Floor Plan

7th, 12th, 17th, 22nd, 27th & 32nd



FLAT NO.	TYPE	CARPET	DRY BALCONY	BALCONY	TOTAL CARPET	
		(SQ.M.)	(SQ.M.)	(SQ.M.)	(SQ.M.)	(SQ.FT.)
701,1201,1701,2201,2701,3201 702,1202,1702,2202,2702,3202	4 BHK - 2	106.09	3.43	12.23	121.75	1311
703,1203,1703,2203,2703,3203	4 BHK - 1	127.81	3.43	21.54	152.78	1645
704,1204,1704,2204,2704,3204	2 BHK - 4	87.13	3.43	9.07	99.63	1072



# WING-D

## Typical Floor Plan

3rd to 6th, 8th to 11th,  
13th to 16th, 18th to 21st,  
23rd to 26th, 28th to 31st,  
33rd to 36th



FLAT NO.	TYPE	CARPET	DRY BALCONY	BALCONY	TOTAL CARPET	
		(SQ.M.)	(SQ.M.)	(SQ.M.)	(SQ.M.)	(SQ.FT.)
301, 401, 501, 601, 801, 901, 1001, 1101, 1301, 1401, 1501, 1601, 1801, 1901, 2001, 2101, 2301, 2401, 2501, 2601, 2801, 2901, 3001, 3101, 3301, 3401, 3501, 3601	2.5 BHK-1	76.92	2.68	7.99	87.59	943
302, 402, 502, 602, 802, 902, 1002, 1102, 1302, 1402, 1502, 1602, 1802, 1902, 2002, 2102, 2302, 2402, 2502, 2602, 2802, 2902, 3002, 3102, 3302, 3402, 3502, 3602	2.5 BHK-1	76.92	2.68	7.99	87.59	943
303, 403, 503, 603, 803, 903, 1003, 1103, 1303, 1403, 1503, 1603, 1803, 1903, 2003, 2103, 2303, 2403, 2503, 2603, 2803, 2903, 3003, 3103, 3303, 3403, 3503, 3603	2 BHK-1	62.65	2.68	10.11	75.44	812

FLAT NO.	TYPE	CARPET	DRY BALCONY	BALCONY	TOTAL CARPET	
		(SQ.M.)	(SQ.M.)	(SQ.M.)	(SQ.M.)	(SQ.FT.)
304, 404, 504, 604, 804, 904, 1004, 1104, 1304, 1404, 1504, 1604, 1804, 1904, 2004, 2104, 2304, 2404, 2504, 2604, 2804, 2904, 3004, 3104, 3304, 3404, 3504, 3604	2 BHK-2	61.79	2.68	6.50	70.97	764
305, 405, 505, 605, 805, 905, 1005, 1105, 1305, 1405, 1505, 1605, 1805, 1905, 2005, 2105, 2305, 2405, 2505, 2605, 2805, 2905, 3005, 3105, 3305, 3405, 3505, 3605	2 BHK-2	61.79	2.68	6.50	70.97	764
306, 406, 506, 606, 806, 906, 1006, 1106, 1306, 1406, 1506, 1606, 1806, 1906, 2006, 2106, 2306, 2406, 2506, 2606, 2806, 2906, 3006, 3106, 3306, 3406, 3506, 3606	2 BHK-3	53.89	2.16	3.61	59.66	642
1307, 1407, 1507, 1607, 1807, 1907, 2007, 2107, 2307, 2407, 2507, 2607, 2807, 2907, 3007, 3107, 3307, 3407, 3507, 3607	2 BHK-3	53.89	2.16	3.61	59.66	642

# WING-D

## Refuge Floor Plan

7th, 12th, 17th, 22nd, 27th & 32nd



FLAT NO.	TYPE	CARPET	DRY BALCONY	BALCONY	TOTAL CARPET	
		(SQ.M.)	(SQ.M.)	(SQ.M.)	(SQ.M.)	(SQ.FT.)
701, 1201, 1701, 2201, 2701, 3201 702, 1202, 1702, 2202, 2702, 3202.	2.5 BHK-1	76.92	2.68	7.99	87.59	943
703, 1203, 1703, 2203, 2703, 3203.	2 BHK-1	62.65	2.68	10.11	75.44	812

FLAT NO.	TYPE	CARPET	DRY BALCONY	BALCONY	TOTAL CARPET	
		(SQ.M.)	(SQ.M.)	(SQ.M.)	(SQ.M.)	(SQ.FT.)
704, 1204, 1704, 2204, 2704, 3204 705, 1205, 1705, 2205, 2705, 3205	2 BHK-2	61.79	2.68	6.50	70.97	764
1707, 2207, 2707, 3207.	2 BHK-3	53.89	2.16	3.61	59.66	642



# WING - E

## Typical Floor Plan

3rd to 6th, 8th to 11th,  
13th to 16th, 18th to 21st,  
23rd to 26th, 28th to 31st,  
33rd to 36th



FLAT NO.	TYPE	CARPET	DRY BALCONY	BALCONY	TOTAL CARPET	
		(SQ.M.)	(SQ.M.)	(SQ.M.)	(SQ.M.)	(SQ.FT.)
301, 401, 501, 601, 801, 901, 1001, 1101, 1301, 1401, 1501, 1601, 1801, 1901, 2001, 2101, 2301, 2401, 2501, 2601, 2801, 2901, 3001, 3101, 3301, 3401, 3501, 3601	3 BHK	89.42	3.25	9.14	101.81	1096
302, 402, 502, 602, 802, 902, 1002, 1102, 1302, 1402, 1502, 1602, 1802, 1902, 2002, 2102, 2302, 2402, 2502, 2602, 2802, 2902, 3002, 3102, 3302, 3402, 3502, 3602						

FLAT NO.	TYPE	CARPET	DRY BALCONY	BALCONY	TOTAL CARPET	
		(SQ.M.)	(SQ.M.)	(SQ.M.)	(SQ.M.)	(SQ.FT.)
303, 403, 503, 603, 803, 903, 1003, 1103, 1303, 1403, 1503, 1603, 1803, 1903, 2003, 2103, 2303, 2403, 2503, 2603, 2803, 2903, 3003, 3103, 3303, 3403, 3503, 3603	3 BHK	89.42	3.25	9.14	101.81	1096
304, 404, 504, 604, 804, 904, 1004, 1104, 1304, 1404, 1504, 1604, 1804, 1904, 2004, 2104, 2304, 2404, 2504, 2604, 2804, 2904, 3004, 3104, 3304, 3404, 3504, 3604.						



# WING-E

## Refuge Floor Plan

7th, 12th, 17th, 22nd, 27th & 32nd



FLAT NO.	TYPE	CARPET	DRY BALCONY	BALCONY	TOTAL CARPET	
		(SQ.M.)	(SQ.M.)	(SQ.M.)	(SQ.M.)	(SQ.FT.)
701,1201,1701,2201,2701,3201	3 BHK	89.42	3.25	9.14	101.81	1096
703,1203,1703,2203,2703,3203						
704,1204,1704,2204,2704,3204						
702,1202,1702,2202,2702,3202	1 BHK	57.18	3.25	2.66	63.09	679



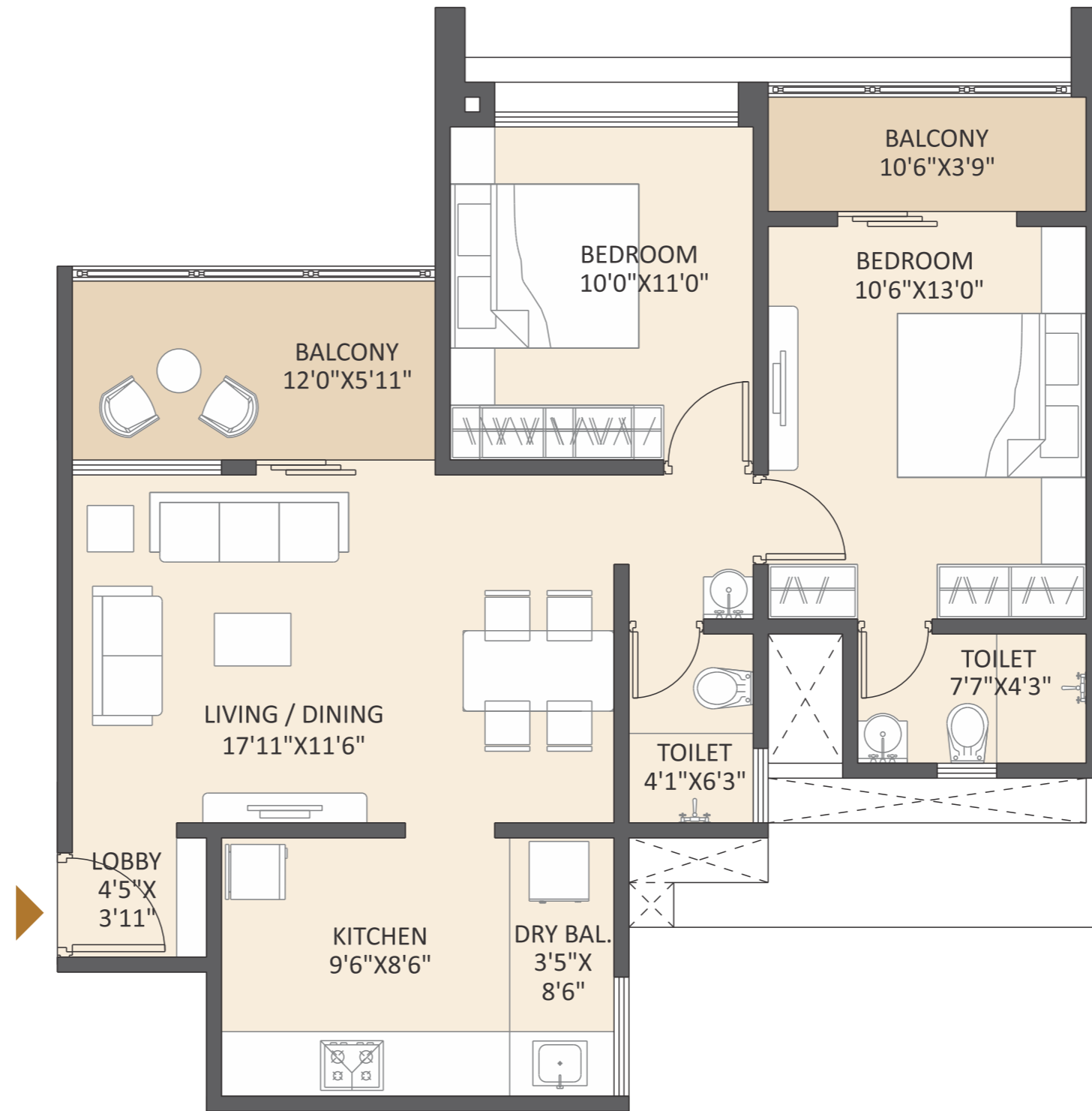


# UNIT PLANS

---

---

2 BHK - 1



TYPE	CARPET	DRY BALCONY	BALCONY	TOTAL CARPET	
	(SQ.M.)	(SQ.M.)	(SQ.M.)	(SQ.M.)	(SQ.FT.)
2 BHK - 1	62.65	2.68	10.11	75.44	812



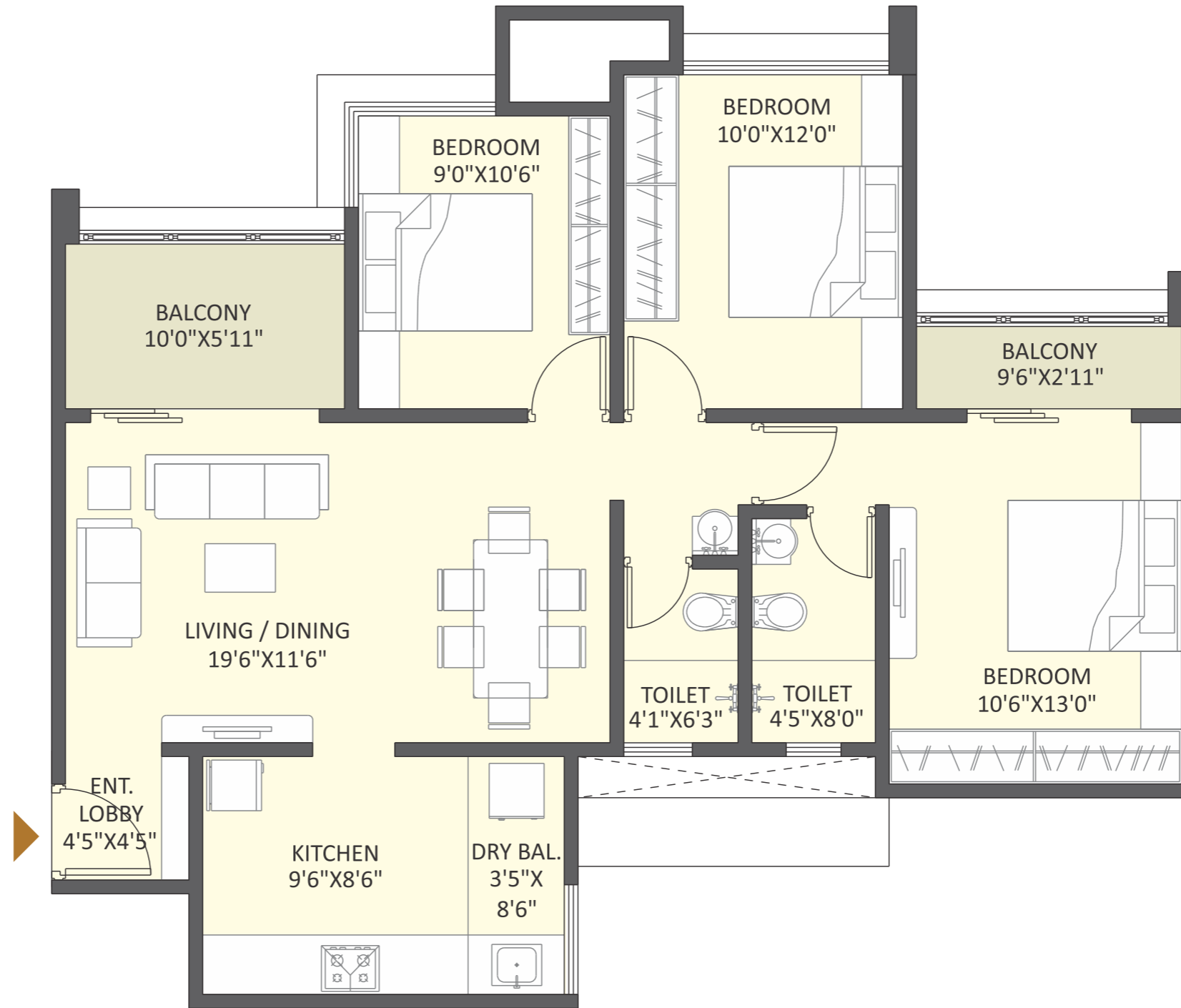
# 2 BHK - II



TYPE	CARPET	DRY BALCONY	BALCONY	TOTAL CARPET	
	(SQ.M.)	(SQ.M.)	(SQ.M.)	(SQ.M.)	(SQ.FT.)
2 BHK - 2	61.79	2.68	6.50	70.97	764



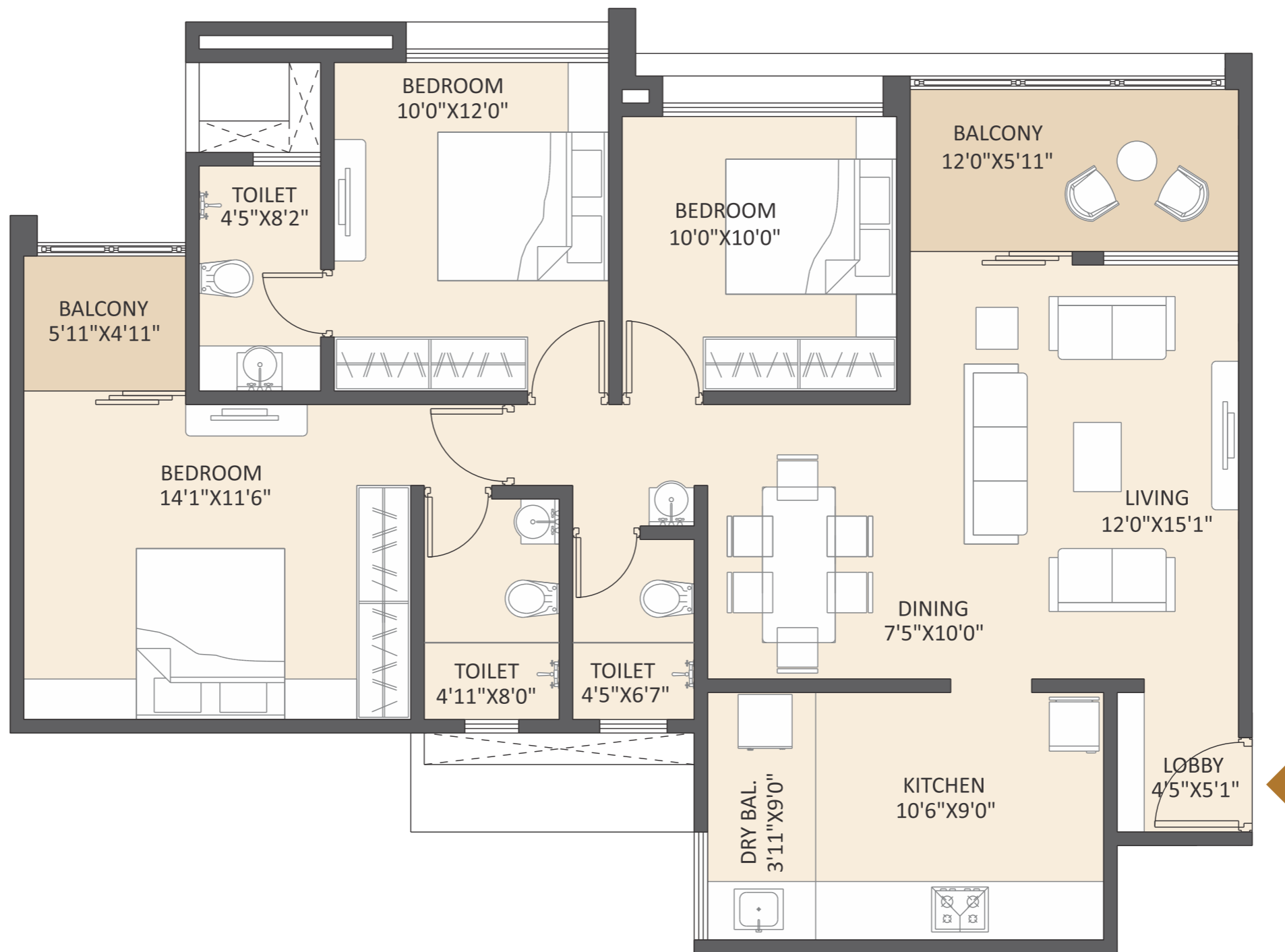
2.5 BHK - I



TYPE	CARPET	DRY BALCONY	BALCONY	TOTAL CARPET	
	(SQ.M.)	(SQ.M.)	(SQ.M.)	(SQ.M.)	(SQ.FT.)
2.5 BHK - 1	76.92	2.68	7.99	87.59	943



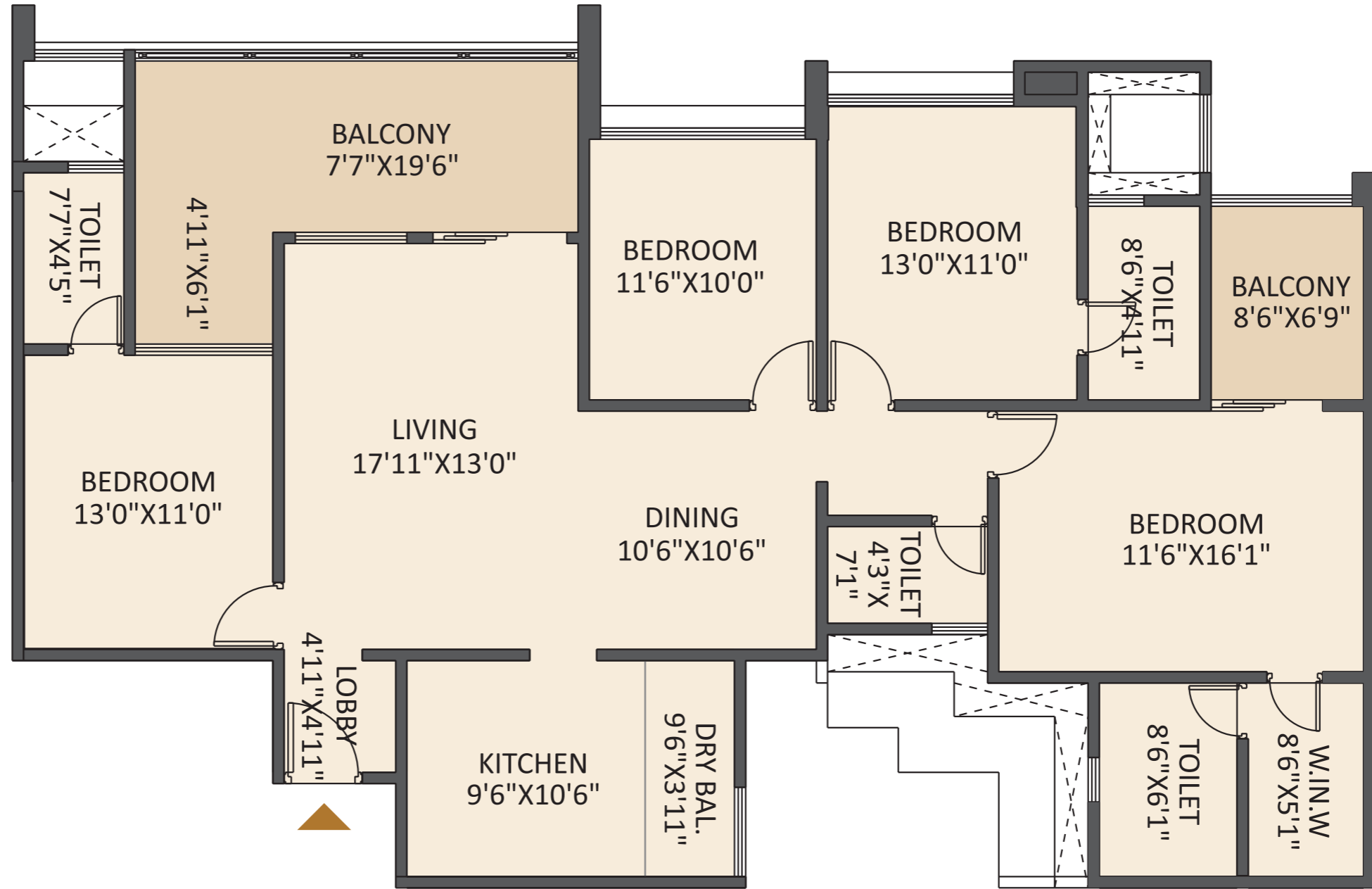
# 3 BHK - 1



TYPE	CARPET	DRY BALCONY	BALCONY	TOTAL CARPET	
	(SQ.M.)	(SQ.M.)	(SQ.M.)	(SQ.M.)	(SQ.FT.)
3 BHK - 1	89.42	3.25	9.14	101.81	1096



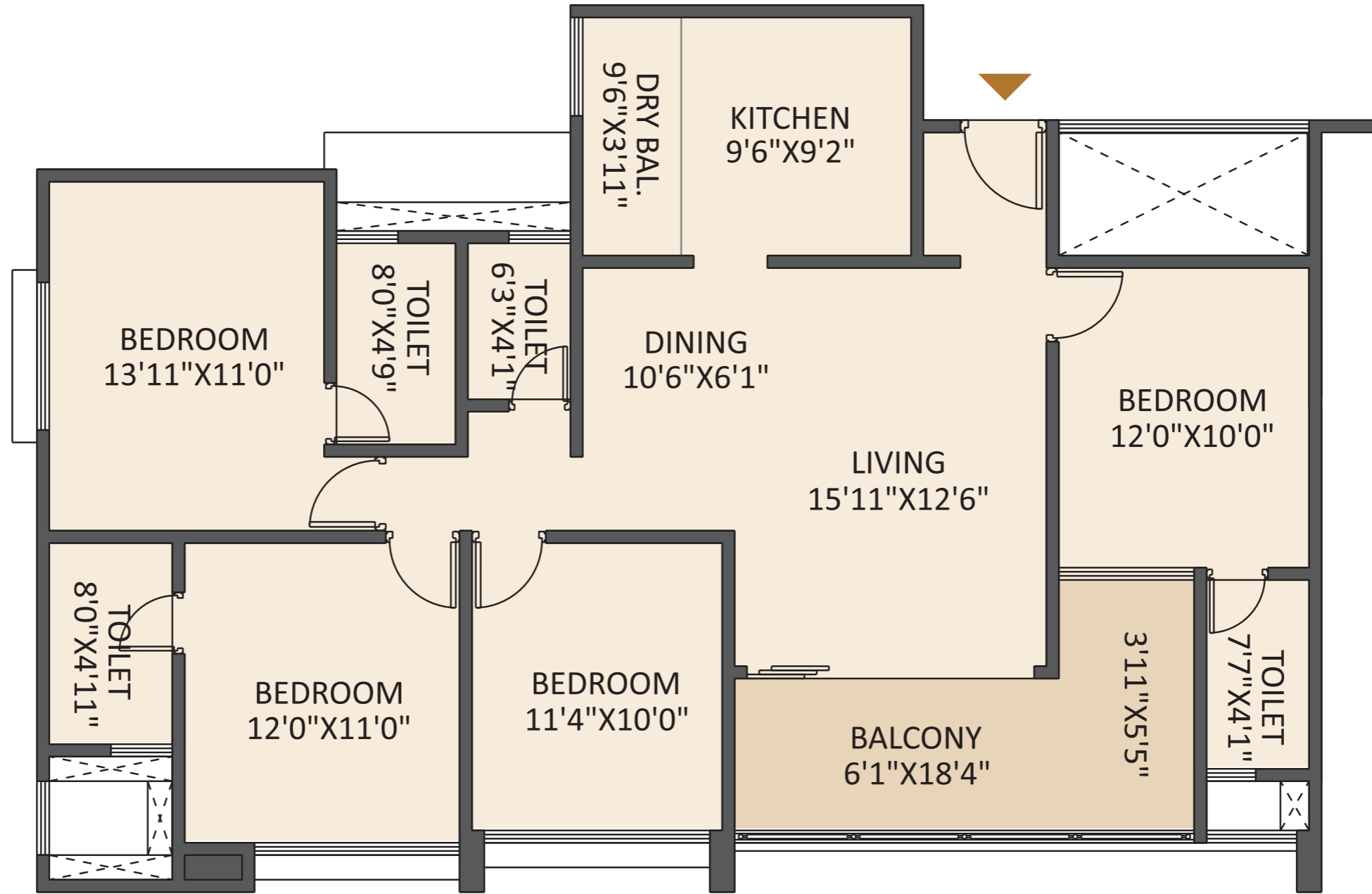
4 BHK - I



TYPE	CARPET	DRY BALCONY	BALCONY	TOTAL CARPET	
	(SQ.M.)	(SQ.M.)	(SQ.M.)	(SQ.M.)	(SQ.FT.)
4 BHK - 1	127.81	3.43	21.54	152.78	1645



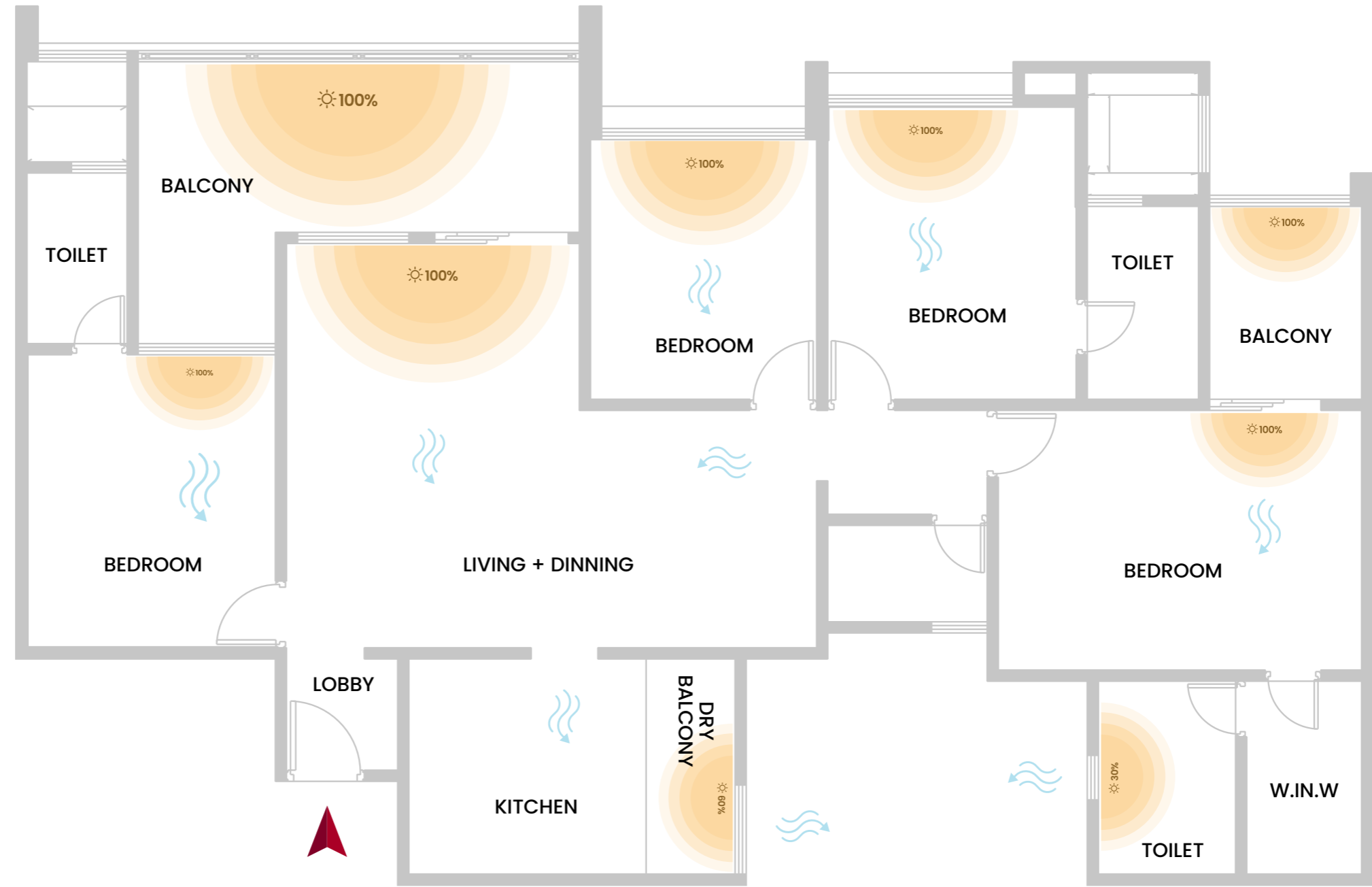
# 4 BHK - II



TYPE	CARPET	DRY BALCONY	BALCONY	TOTAL CARPET	
	(SQ.M.)	(SQ.M.)	(SQ.M.)	(SQ.M.)	(SQ.FT.)
4 BHK - 2	106.09	3.43	12.23	121.75	1311



# VASTU COMPLIANT HOMES



Ample Light Wind Flow



# LEGACY Of Iconic Luxury



CO-PARTNER



The **Tarde Corp**, led by Mr Satyam Shiveagar Tarde, and **Silver Group**, founded by Mr. Kiran Kisan Sawant, share a transformative journey rooted in the philosophy of **“Soil to Silver.”** Satyam’s hands-on experience, starting at age 16 with the DMart Chakan project, shaped him into a visionary leader known for his ability to translate ideas into reality. His grounded yet ambitious approach resonates with the young generation.

**Silver Group**, established in 2009, began with the Gurukrupa project and expanded through successful residential ventures like Silver Oak and Silver City. Mr. Sawant's passion for fitness led to the launch of Silver Fitness Club and Silver Sports & Fitness Club, aiming to enhance community well-being. The brand continues to grow with projects like Silver 9, Silver Akshay, and Silver Royal, and ventures into hospitality. Both Satyam and Kiran are driven by innovation, building on values of humility and excellence to shape their respective legacies.



**16+**  
YEARS OF LEGACY



**3000+**  
HAPPY FAMILIES



**15+**  
COMPLETED PROJECTS

## COMPLETED PROJECTS

- SILVER OAK
- SILVER ROYAL
- SILVER AKSHAY
- SILVER KAVITA
- SILVER 18
- SILVER 9 PHASE I
- SILVER CITY PHASE I
- SILVER SKIES
- SILVER KARISHMA