

# A HOME WHICH IS ELITE YET AFFORDABLE

---



Behind AG Office, Vidhan Sabha Road, Raipur

RERA NO.: PCGRERA291218000883, [www.rera.cgstate.gov.in](http://www.rera.cgstate.gov.in)

**EXCLUSIVELY  
CRAFTED  
FOR YOU**

---

**DESIGN  
SUITING YOUR  
FAMILY NEED**

# WELCOME TO AN ELITE LIVING

## अच्छी बसाहत के बीच, खूबसूरत बनावट के साथ

At Avinash, we care for you and we know your needs and for that we have crafted '**Avinash Elite Homes**' which caters to your entire family needs.

**Space. Design. Budget. Location. Elegance.**

Spread across 5 acres of land, '**Avinash Elite Homes**' offers you freedom from satiated apartment living, hustle bustle environment and mundane lifestyle by fulfilling your dream to choose from beautiful options of fully developed **residential Plots, Singlex & Duplex Bungalows**. 'Avinash Elite Homes' is the answer of what you are looking for. Ideally located in well developed & habitat area of city and in the close proximity with Maha Lekhakar Bhawan, DPS, Gyan Ganga, Brighton School, Ambuja Mall, Vidhan Sabha and many more prominent landmarks. 'Avinash Elite Homes' is absolutely an exciting and vibrant place to live.

**Plots 33 Units**

**Singlex 2BHK 37 Units**

**Duplex 3 BHK 45 Units**



# A PERFECT SPACE PLANNING FOR THE NEW AGE FAMILY

## आराम और सुकून का संपूर्ण आयाम शहर के पास ही

'Avinash Elite Homes' is located near junction of Vidhansabha Chowk and well connected with Raipur City, Naya Raipur, Bilaspur, Baloda Bazaar & Kharora. The project is well connected by various modes of transportation, also it can be easily approachable to all civic utilities like healthcare centers, educational hub, institutes and recreational centers. Location of this project and amazing construction makes it best place to live.

DUPLEX HOMES - LIVING REDEFINED



# MY DREAMS MY HOME

## SINGLEX HOMES - LIVING REDEFINED



- Maha Lekhakar Bhawan  
**0.75 Km**  
(1 Min)
- DPS  
**1.9 Km**  
(3 Min)
- Ambuja Mall  
**5.2 Km**  
(5 Min)
- Pandri Bus Stand  
**10 Km**  
(15 Min)
- Jai Stambh Chowk  
**11.8 Km**  
(20 min)
- Railway Station  
**12.9 Km**  
(20 Min)

# EMBRACE YOUR HIDDEN DESIRES EVERYDAY

सबके लिए सबकुछ, एक बार आइये और स्वयं अनुभव कीजिये



## AMENITIES



Jogger's Track



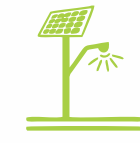
Open Badminton Court



Kids Play Area



Open Gym



Solar Street Lights



Sewage Treatment Plant



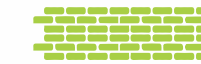
Rainwater Harvesting



CCTV Camera at Entrance Gate



Powerbackup for Common Spaces



Closed Campus with Boundary Wall



Entry Gate with Security Cabin



# LAYOUT PLAN



### PLOT DETAIL

SINGLEX	SQFT.
22'11" x 39'4" west	902
24'7" x 39'4" east/west	968
23'7" x 39'4" east/ west	927
23'7" x 43'6" east/west	1025
DUPLEX	SQFT.
(19'8" x 39'5") north	775
(20'6" x 39'5") north	808
(22'11" x 39'4") west	900
(23'7" x 39' 4") west	927
(24'5" x 39'4") west	954
(24'7" x 39'4") east	968

# FLOOR PLAN

## 3 BHK DUPLEX EAST FACING



GROUND FLOOR

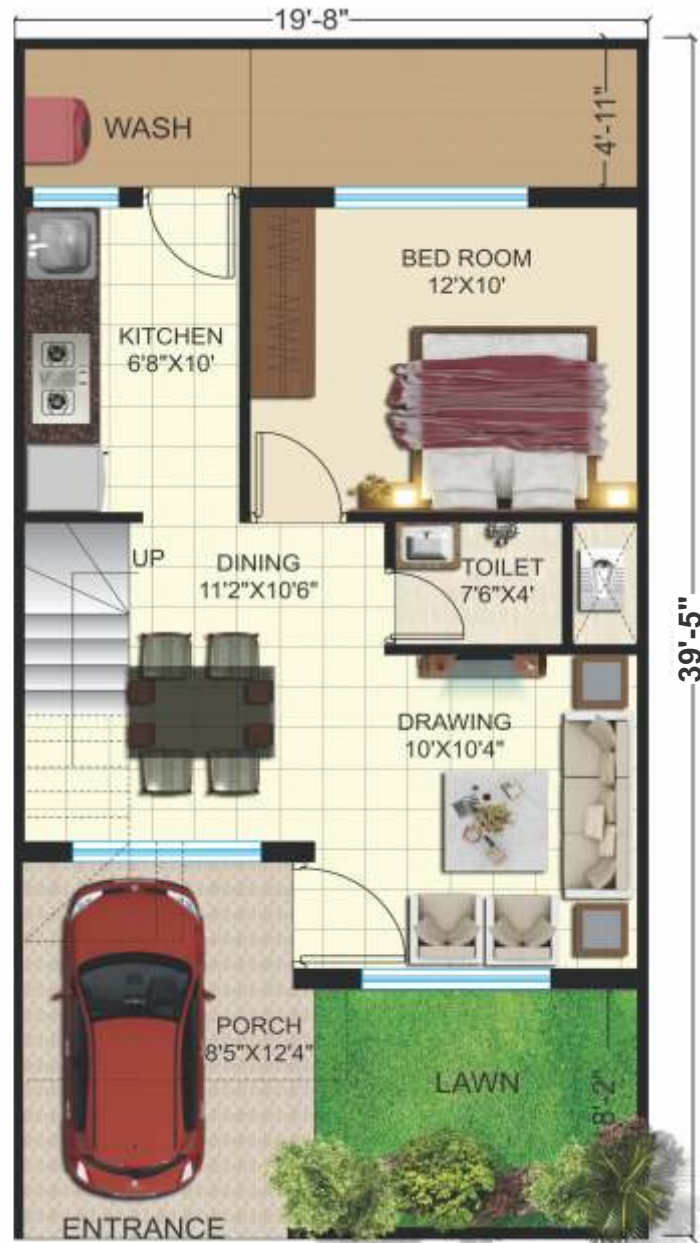


FIRST FLOOR

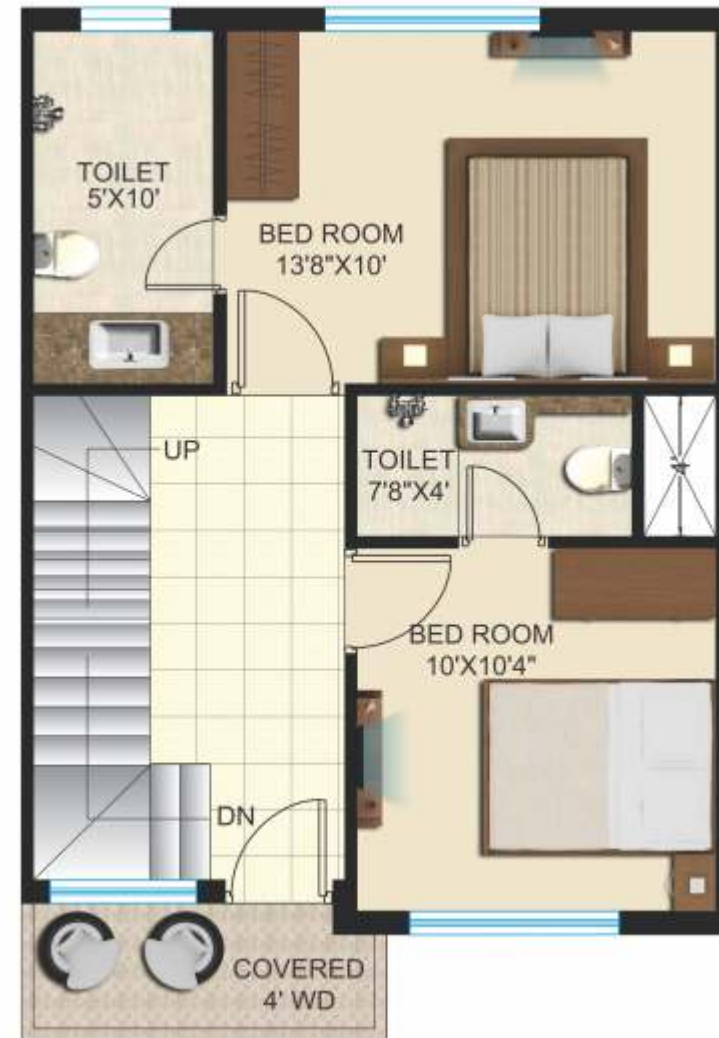
Total Plot Area	= 968 sqft.
Ground Floor Con. Area	= 698 sqft.
First Floor Con. Area	= 698 sqft.
Stair Tower	= 137 sqft.
Total Con. Area	= 1533 sqft.

# FLOOR PLAN

## 3 BHK DUPLEX NORTH FACING



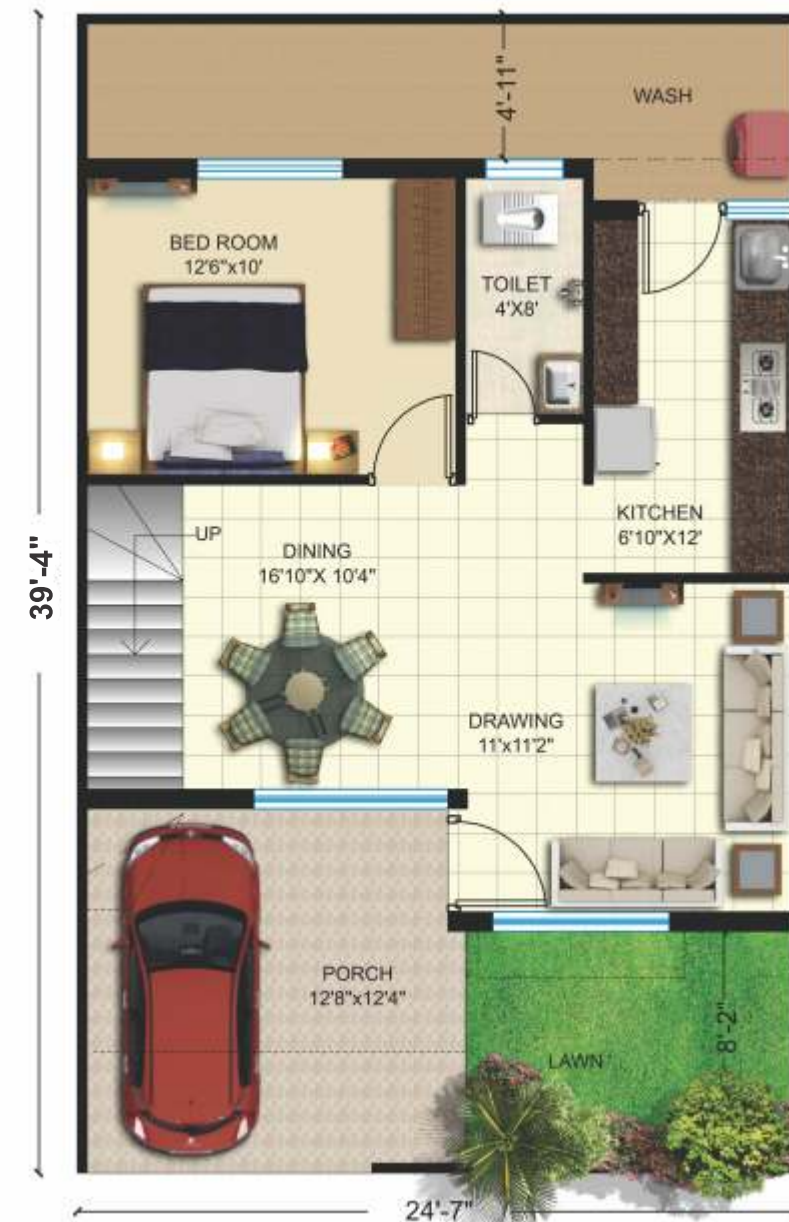
GROUND FLOOR



FIRST FLOOR

Total Plot Area	= 775 sqft.
Ground Floor Con. Area	= 550 sqft.
First Floor Con. Area	= 550 sqft.
Stair Tower	= 110 sqft.
<b>Total Con. Area</b>	<b>= 1210 sqft.</b>

## 3 BHK DUPLEX WEST FACING



GROUND FLOOR



FIRST FLOOR

Total Plot Area	= 968 sqft.
Ground Floor Con. Area	= 700 sqft.
First Floor Con. Area	= 700 sqft.
Stair Tower	= 125 sqft.
<b>Total Con. Area</b>	<b>= 1525 sqft.</b>

# FLOOR PLAN



## SINGLEX 2 BHK EAST FACING

Total Plot Area 23'7" x 39'4" = 927.00 sqft.  
Construction Area = 712.00 sqft.

## SINGLEX 2 BHK WEST FACING

Total Plot Area 23'7" x 39'4" = 927.00 sqft.  
Construction Area = 712.00 sqft.

## SINGLEX 2 BHK WEST FACING

Total Plot Area 24'7" x 39'4" = 968.00 sqft.  
Construction Area = 746.00 sqft.

## SINGLEX 2 BHK EAST FACING

Total Plot Area 23'7" x 43'6" = 1025.00 sqft.  
Construction Area = 750.00 sqft.



# BRANDED QUALITY PRODUCTS SPEAK FOR ITSELF

अविनाश है तो क्वालिटी से समझौता कभी नहीं

## FLOORING

- Drawing and Dining Room, Bedrooms & Kitchen Vitrified Tiles 2' x 2' size
- Toilets- Ceramic Tiles upto 7' height
- Wash & Balcony Antiskid tiles

## DOOR

- RCC Door Frame with masonite / Laminated door with mortise lock

## WINDOWS

- Track Powder Coated/ Anodized Aluminium with Mosquito Net

## ELECTRICAL

- Modular Switches & Wires of ISI mark

## WALL FINISHES

**Interior** - Cement Based Birla White Putty Finish

**Exterior**- Waterproof Weather Coat Paint

## SANITARY FITTINGS

- White Vitreous Wash Basin, W.C. and CP Tap Fittings (Jaguar or Equivalent)



# A HALLMARK OF TRUST & EXCELLENCE

23 वर्षों से निरंतर आपकी सेवा में

Avinash Group is the first name to reckon in Central India when it comes to customer satisfaction, Trust, Transparency, Quality, Sustained Growth & Innovation. It was inception in the year 1996 on the strong foundation of ethical values in compliance with environment to enhance lifestyles.

In 23 years, the company has reached its position as the most trusted name in real estate of Central India. Avinash Group has completed several landmark projects and is currently developing significant projects across Chhattisgarh. Many projects of Avinash Group have received several recognitions for its quality and innovations.

52 LANDMARK PROJECTS | 37 RESIDENTIAL  
12 COMMERCIAL | 2 MALLS & 1 CLUB



# LOCATION MAP



**CORPORATE OFFICE : Avinash Developers Pvt. Ltd.,**  
 Avinash House, Maruti Business Park, G.E. Road,  
 Raipur-492001 (C.G.) Tel.: 0771 - 4033425, 3290550  
**For Booking Contact : 93990 22739, 99071 88444**  
 www.avinashgroup.com | email: connect@avinashgroup.com



Scan the QR Code for  
 Google Map Location

**Disclaimer :** All Rights Reserved- No part of this brochure will be reproduced, stored or transmitted in any form or by any means, electronic or mechanical, including photocopy or recording on any other information page storage or retrieval system, without written permission of Avinash Group.  
 This brochure is purely conceptual and not a legal offering. The developer reserves all rights to add, delete, alter any details, specifications, mentioned herein. The brochure is indicative of how the furniture can be arranged in the residential unit. No furniture is to be supplied to the purchaser by the developer unless otherwise mentioned. All images, unless otherwise indicated are used for illustrative purpose only.  
 Avinash Group logo and Avinash Elite Homes logo are sole propriety and liability of Avinash Developers Pvt. Ltd.

Follow us on : [f](#) [v](#) [t](#) [t](#) [t](#) /avinashgroup