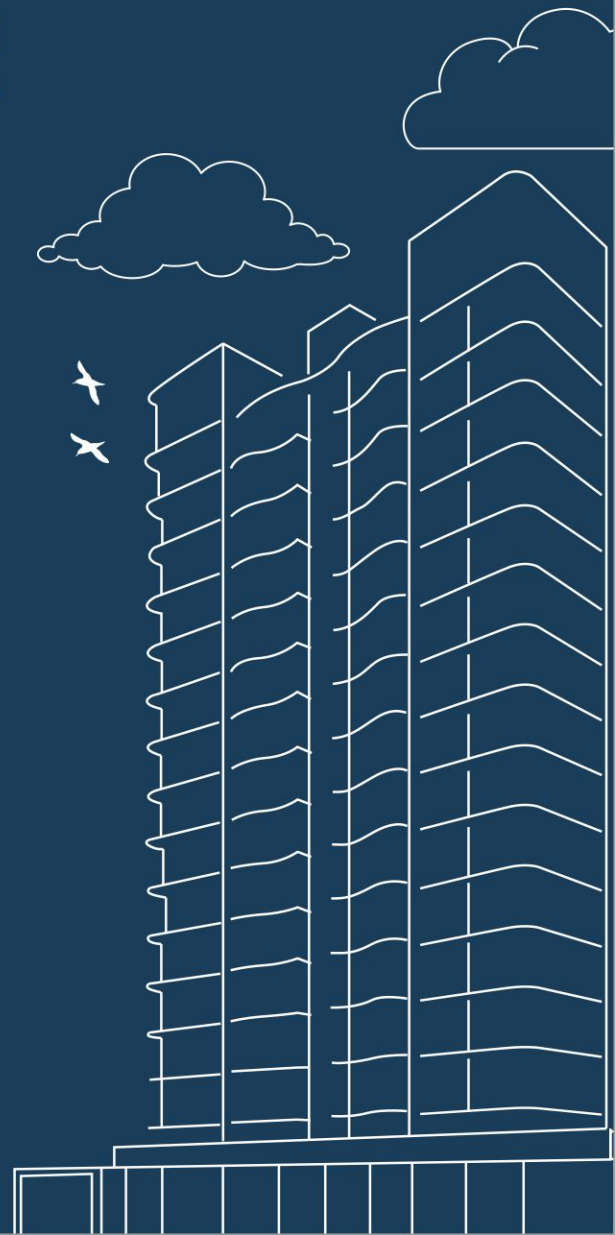




# MILLENNIUM — TOWER —

ULTRA PREMIUM 2 & 3 BHK

A PROJECT BY





\*Artist's Impression

## YOUR GATEWAY TO LUXURY LIVING

Millennium Tower is a highly coveted residential project located in the heart of Nashik. Designed with meticulous attention to detail, this thoughtfully planned development offers 172 Ultra Premium 2 and 3 bed apartments spread across three towers. The development boasts a meditation center along with open gym, swimming pool and along with 30+ modern amenities which are perfect for those seeking a healthy and fulfilling lifestyle. The lush natural surroundings of Millennium Tower further enhance the quality of life, providing a serene and peaceful environment.

Experience the best of urban living at Millennium Tower, where luxury, comfort, and convenience converge to offer a truly exceptional living experience.

## RESIDENCES YOU WOULD LOVE TO CALL HOME

The Millennium Tower residences are an epitome of elegance and luxury. The living areas are beautifully designed, with natural light streaming in, and imported marble flooring that exudes opulence. The bedrooms are spacious and tastefully crafted with fine architecture and quality flooring. The kitchen is thoughtfully designed to inspire your culinary skills, while the bathrooms are fitted with superior fixtures that leave a lasting impression. What's more, the Millennium Tower is strategically located in the serene and holy neighbourhood of Panchavati, Nashik. This city has something for everyone - devotees, businessmen, families, students, and lifestyle seekers.



Natural  
Sunlight



Proper  
Ventilation



Extra  
Spacious



World Class  
Amenities






Project Vastu  
Compliant






\*Artist's Impression

# AMENITIES

- 
**Acupuncture Path**  
 Get renewed and restored with acupuncture.
- 
**Yoga Spot**  
 Nurture yourself
- 
**Green Gym**  
 Making fitness fun!

- 
**Senior Citizens Area**  
 Growing older yet staying young!
- 
**Walkway**  
 Step up to the new you!
- 
**Thick Plantation**  
 Taking gardening to the next level.

- 
**Relaxing Water Feature**  
 Water, the beauty of Nature.
- 
**Sculptures**  
 Adding a masterpiece to your space!
- 
**Security Cabin**  
 To monitor entry & exit points

- 
**CCTV Surveillance**  
 The safest feeling at home
- 
**Maintenance Office**  
 Keeping things working
- 
**EV Charging Point**  
 For a Greener tomorrow

# A WORLD OF AMENITIES AT YOUR DOORSTEP



\*Image for presentation purpose only

# SALIENT FEATURES AND SPECIFICATIONS

## Structure

- Earthquake resistant R.C.C. frame structure as per national building code.

## Wall

- 6" External and 4" Internal brick or AAC blocks brick wall.

## Flooring

- Vitrified flooring in all rooms
- Anti-skid flooring in all attached terrace & bathroom

## Door

- All doors are flush doors with lamination.
- Decorative entrance door with quality fitting.
- Good quality waterproof internal flush door.

## Windows

- 3 - Track powder coated Aluminum sliding windows (Mosquito net, Safety grill, Granite window sill)

## Plaster

- Sand faced external and Gypsum finished internal plaster.

## Paint

- Tractor emulsion paint, external weather proof apex paint for the entire building.

## Kitchen

- Granite Kitchen platform with stainless steel sink.
- Dado tiles, glazed tiles upto 4' height kitchen
- Provision of Exhaust Fan.

## Bathroom

- Anti - skid ceramic flooring with designer dado tiles.
- Glazed tiles upto 7' Height
- White sanitary ware (Jaguar / Hindware / Parryware or equivalent)
- CP fitting with Hot, Cold Mixer and shower (Jaguar/Hindware )
- Provision of Exhaust Fan.

## Electrification

- Adequate concealed electrical points with fire resistance copper wiring in all rooms.
- A/C point in masterbed.

## Plumbing

- Concealed plumbing in every flat.
- Provision for fixing water purifiers in kitchen.

## Lift

- OTIS, KONE, Power link or equivalent.

# A NEIGHBOURHOOD THAT KEEPS YOU CONNECTED TO THE ENTIRE CITY



### Landmark

Apollo Hospital	- 1.4 Km
Lokmanya Hospital	- 0.4 Km
Sports Complex	- 3 Km
Proposed IT Park	- 12 Km

### Education

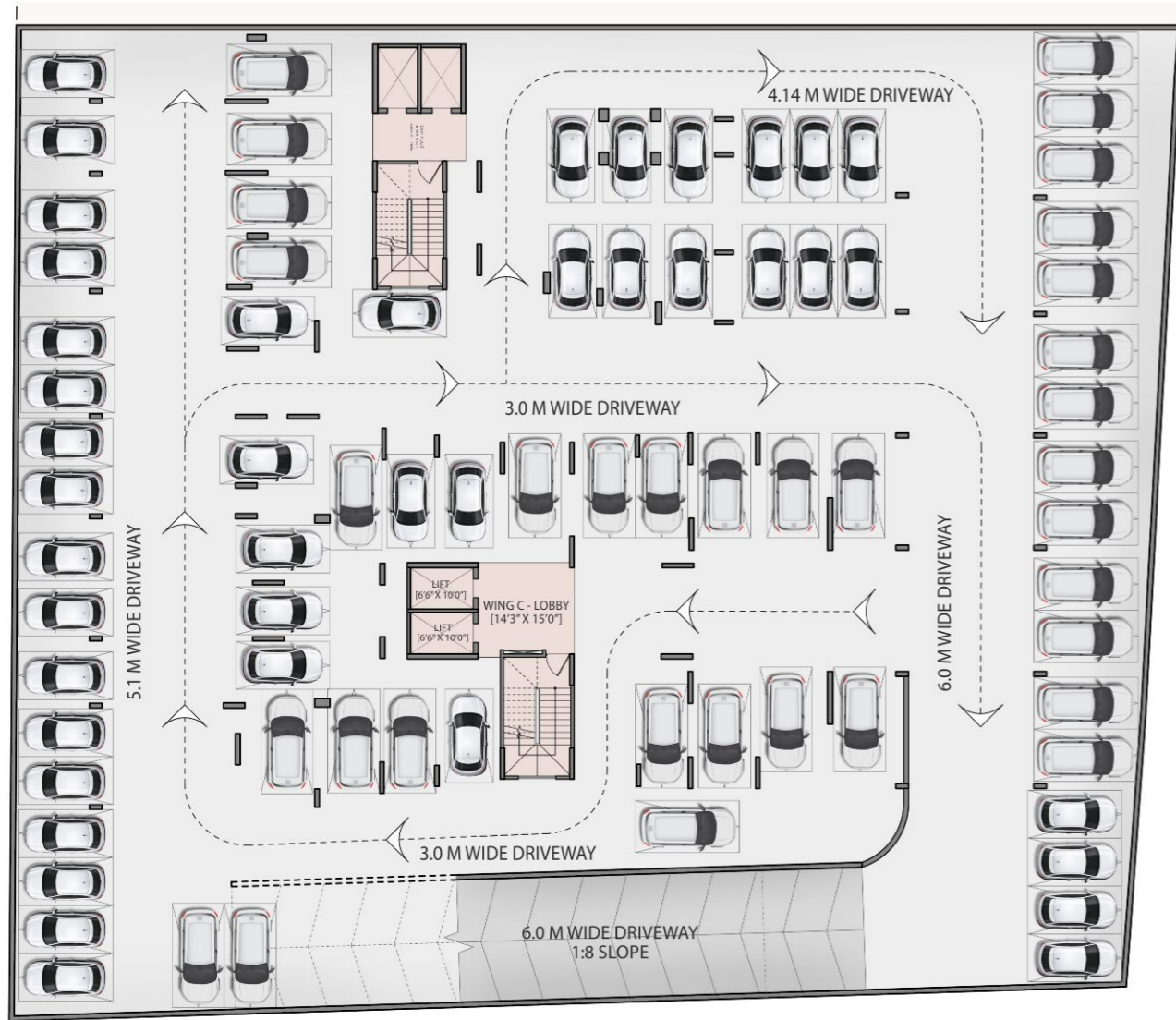
Rasbihari School	- 0.8 Km
K.K. Wagh Engineering College	- 2 Km
MET College	- 6 Km
NDVP Medical College	- 4.5 Km

### Transportation

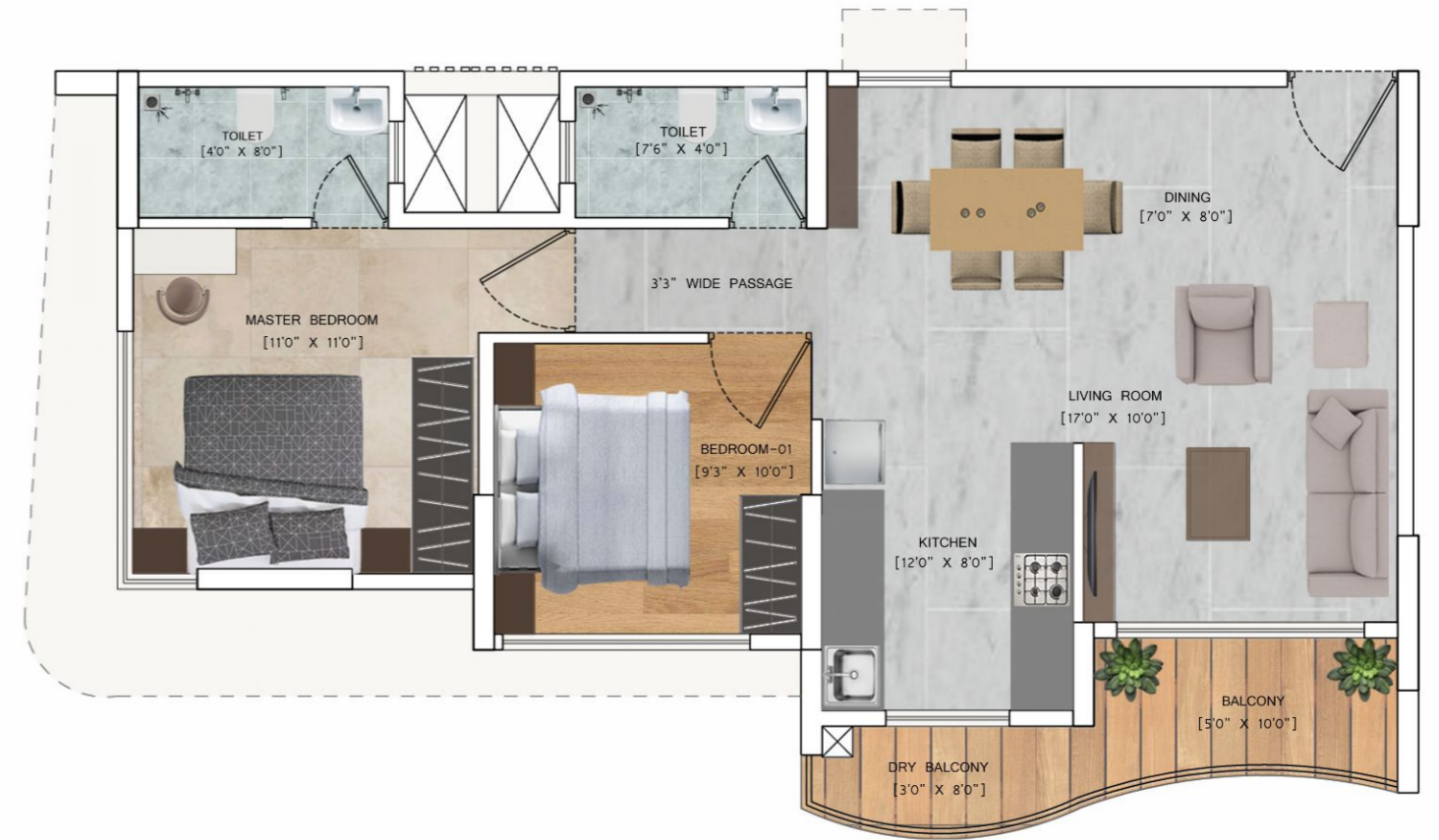
Ozar Airport	- 15 Km
Bali Maharaj Mandir	- 0.8 Km
Bali Maharaj Bus Stop	- 0.8 Km
Nimani Bus Stop	- 4.7 Km
Nashik Road Railway Station	- 10 Km

\*Map not to scale

# BASEMENT FLOOR PLAN



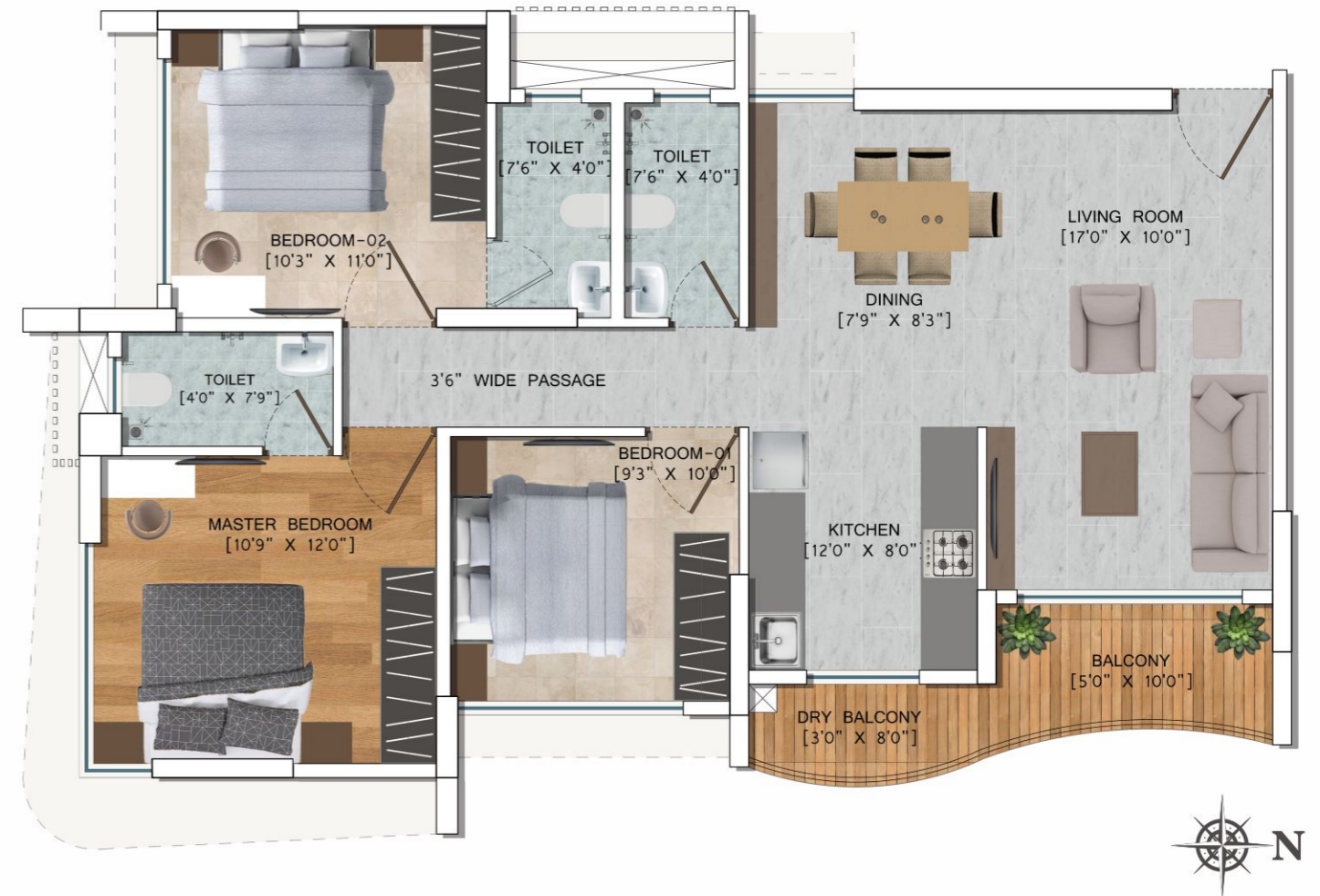
# WING A - 2BHK - 1ST, 2ND - 15TH



# GROUND FLOOR PLAN



# WING A - 3BHK - 1ST, 2ND - 15TH



# WING A - 1ST FLOOR 2 BHK

# WING A - 1ST FLOOR 3 BHK



# MASTERS BEHIND THIS PROJECT



Sagar Construction is a leading real estate company with nearly four decades of experience in the industry. We focus on providing our clients with top-quality properties that are both a sound investment and a comfortable place to live and work. Customer satisfaction is our top priority, and we have assembled a team of highly qualified professionals with expertise in engineering, architecture, interior design, and management to ensure that we deliver exceptional service at competitive prices. Our team is dedicated to deliver the highest calibre of properties and a customer satisfaction guarantee.

## CREDITS



**Architect**  
GroupARCH (Mumbai)



**Legal Advisor**  
MRS. VIDYULLATA KANTILAL TATED



**RCC Consultant Structural**  
Shailesh P. Dhumne



**MEP**  
Milind Shete

- MEMBER -



# PROJECTS COMPLETED

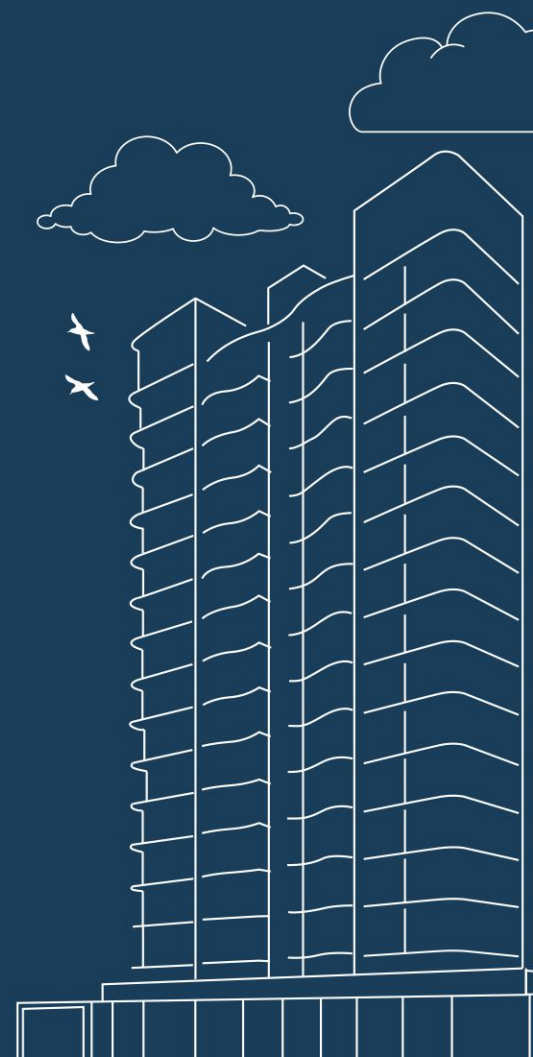
- GANESH NAGAR
- SARASWATI NAGAR
- VRINDAVAN COLONY
- HANUMAN NAGAR
- TULSI COLONY
- MATRUDARSHAN SOCIETY
- GOPAL NAGAR
- AUDUMBER NAGAR
- SAGAR TOWNSHIP
- SAGAR VILLAGE
- SAGAR GARDEN
- SAGAR COMPLEX
- SAGAR PARK
- SAGAR SHILP
- SAGAR VIHAR
- SAGAR SANKUL
- SAGAR PLAZA
- SAGAR IMAGE 'A'
- SAGAR SPARSH 'A'
- SAGAR TARANG 'A'
- SAI SAGAR 'A'
- SAGAR SPANDAN
- SAGAR SPARSH 'G'
- SAGAR TARANG 'B'
- SAGAR IMAGE 'B'
- SAI SAGAR 'B' (Residential)
- SAGAR TWIN BUNGALOWS
- SAGAR SPARSH 'E & F'
- SAGAR NAKSHTRA

# 38 YEARS

OF TRUST, INNOVATION  
AND TRADITION

# 6000+ HAPPY FAMILIES

HAVE TRUSTED US FOR  
THEIR DREAM HOME.



Site Address :  
Millennium Tower, Amrutdham Square, Pachavati, Nashik

 **98811 15116 / 88888 1118**



**SAGAR**  
CONSTRUCTIONS

Office: 250/2 Amrutdham Corner, Mumbai-Agra Highway, Panchavati, Nasik  
[www.sagarconstructions.co](http://www.sagarconstructions.co)

[maharera.mahaonline.gov.in](http://maharera.mahaonline.gov.in)  Maha RERA No. - P51600048892



Scan QR Code to  
Connect on WhatsApp

**Disclaimer:**

This brochure is purely conceptual and not a legal offering. We reserve the right to add, delete and/or alter any details and/or specification in its endeavor to make improvements as and when required. Images used are for illustration purpose only.

Follow us on :   \sagarconstruction